

**ANNUAL VEGETATION  
MONITORING REPORT  
YEAR – 2025**



Site Description – Location ID 305223

<b>Name</b>	DOW LAURA-65N63W/28NESE
<b>Location ID</b>	<a href="#">305223</a>
<b>Operator / #</b>	HIGHPOINT OPERATING CORPORATION / 10071
<b>Field / #</b>	WATTENBERG / 90750
<b>County, State</b>	WELD, CO
<b>Lat/Long</b>	40.367970 / -104.433210
<b>Reclamation Status</b>	Final
<b>Condition of Approval Description</b>	<b>No COA Associated with Location</b>

Site Description – Location ID 331381

<b>Name</b>	DOW-65N63W/28NESE
<b>Location ID</b>	<a href="#">331381</a>
<b>Operator / #</b>	BONANZA CREEK ENERGY OPERATING COMPANY LLC / 8960
<b>Field / #</b>	WATTENBERG / 90750
<b>County, State</b>	WELD, CO
<b>Lat/Long</b>	40.368350 / -104.433410
<b>Reclamation Status</b>	Final
<b>Condition of Approval Description</b>	<p><b>Form 4 Doc # &amp; Date:</b> <a href="#">404033446</a> &amp; 03/03/2025</p> <ul style="list-style-type: none"> <li>○ <b>COA Description:</b> Operator shall submit an annual vegetation monitoring report no later than October 31, 2025. The report shall summarize a quantitative vegetation assessment and report any weed management performed.</li> </ul>

## Field Visit Information

<b>Vegetation Present</b>	<p><u>September 15<sup>th</sup>, 2025</u></p> <ul style="list-style-type: none"> <li>○ Cheatgrass – <i>Bromus tectorum</i> – Colorado List C Noxious Weed</li> <li>○ Russian Thistle – <i>Salsola tragus</i> – Common Weed</li> <li>○ Kochia – <i>Bassia scoparia</i> – Common Weed</li> <li>○ Species in Landowner Seed Mix not observed.</li> </ul> <table border="1"> <thead> <tr> <th>% Desirable Species</th> <th>% Volunteer Wheat</th> <th>% Weeds</th> <th>% Bare Ground/Litter</th> </tr> </thead> <tbody> <tr> <td>0</td> <td>5</td> <td>55</td> <td>40</td> </tr> </tbody> </table>	% Desirable Species	% Volunteer Wheat	% Weeds	% Bare Ground/Litter	0	5	55	40
	% Desirable Species	% Volunteer Wheat	% Weeds	% Bare Ground/Litter					
	0	5	55	40					
	<p><u>August 12<sup>th</sup>, 2025</u></p> <ul style="list-style-type: none"> <li>○ Russian Thistle – <i>Salsola tragus</i> – Common Weed</li> <li>○ Kochia – <i>Bassia scoparia</i> – Common Weed</li> <li>○ Wheat – <i>Triticum</i> spp.</li> <li>○ Species in Landowner Seed Mix not observed.</li> </ul> <table border="1"> <thead> <tr> <th>% Desirable Species</th> <th>% Volunteer Wheat</th> <th>% Weeds</th> <th>% Bare Ground/Litter</th> </tr> </thead> <tbody> <tr> <td>0</td> <td>40</td> <td>20</td> <td>40</td> </tr> </tbody> </table>	% Desirable Species	% Volunteer Wheat	% Weeds	% Bare Ground/Litter	0	40	20	40
	% Desirable Species	% Volunteer Wheat	% Weeds	% Bare Ground/Litter					
0	40	20	40						
<p><u>July 7<sup>th</sup>, 2025</u></p> <ul style="list-style-type: none"> <li>○ Cheatgrass – <i>Bromus tectorum</i> – Colorado List C Noxious Weed</li> <li>○ Kochia – <i>Bassia scoparia</i> – Common Weed</li> <li>○ Sunflower – <i>Helianthus</i> spp.</li> <li>○ Wheat – <i>Triticum</i> spp.</li> <li>○ Species in Landowner Seed Mix not observed.</li> </ul> <table border="1"> <thead> <tr> <th>% Desirable Species</th> <th>% Volunteer Wheat</th> <th>% Weeds</th> <th>% Bare Ground/Litter</th> </tr> </thead> <tbody> <tr> <td>0</td> <td>20</td> <td>20</td> <td>60</td> </tr> </tbody> </table>	% Desirable Species	% Volunteer Wheat	% Weeds	% Bare Ground/Litter	0	20	20	60	
% Desirable Species	% Volunteer Wheat	% Weeds	% Bare Ground/Litter						
0	20	20	60						
<p><u>May 14<sup>th</sup>, 2025</u></p> <ul style="list-style-type: none"> <li>○ Hoary Cress – <i>Lepidium draba</i> – Colorado List B Noxious Weed</li> <li>○ Kochia – <i>Bassia scoparia</i> – Common Weed</li> <li>○ Sunflower – <i>Helianthus</i> spp.</li> <li>○ Wheat – <i>Triticum</i> spp.</li> <li>○ Species in Landowner Seed Mix not observed.</li> </ul> <table border="1"> <thead> <tr> <th>% Desirable Species</th> <th>% Volunteer Wheat</th> <th>% Weeds</th> <th>% Bare Ground/Litter</th> </tr> </thead> <tbody> <tr> <td>0</td> <td>5</td> <td>15</td> <td>80</td> </tr> </tbody> </table>	% Desirable Species	% Volunteer Wheat	% Weeds	% Bare Ground/Litter	0	5	15	80	
% Desirable Species	% Volunteer Wheat	% Weeds	% Bare Ground/Litter						
0	5	15	80						
<b>Work Completed On-Site</b>	<p><u>Mowing – Weed Management</u></p> <ul style="list-style-type: none"> <li>○ June 11<sup>th</sup>, 2025</li> <li>○ July 18<sup>th</sup>, 2025</li> <li>○ September 28<sup>th</sup>, 2025</li> </ul> <p><u>Seeding</u></p> <ul style="list-style-type: none"> <li>○ March 25<sup>th</sup> to 28<sup>th</sup>, 2025</li> <li>○ Note: None of planted species from Landowner Seed Mix were observed during Field Visits</li> </ul>								
<b>Future Work Planned</b>	<ul style="list-style-type: none"> <li>○ Reclamation Activities to occur between February 1<sup>st</sup>, 2026 and March 1<sup>st</sup>, 2026.</li> <li>○ Seeding was not recommended in 2025 because some topsoil piles may be removed. Recently seeded areas could be disturbed during that process.</li> </ul>								

Site Photos (September 15<sup>th</sup>, 2025)



Well Pad Ground Photo

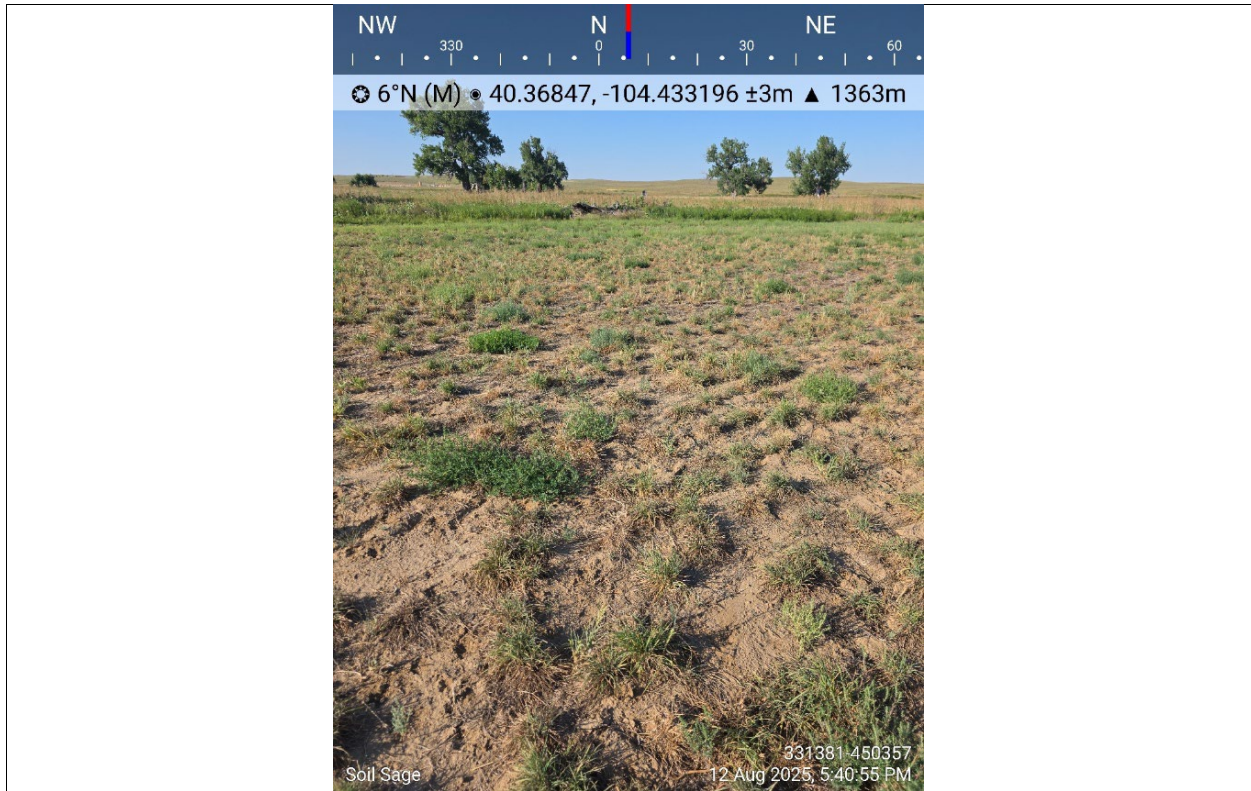
**NORTH** – 40.368565 / -104.433167



**In View** – Pad, Access Road (Variance Requested)

**NORTH** – 40.367797 / -104.433193

Site Photos (August 12<sup>th</sup>, 2025)



Well Pad Ground Photo

**NORTH** – 40.368470 / -104.433196



**In View** – Pad, Access Road (Variance Requested)

**NORTH** – 40.367708 / -104.433392

Site Photos (July 7<sup>th</sup>, 2025)



Well Pad Ground Photo

**NORTH** – 40.368446 / -104.433357



**In View** – Pad, Access Road (Variance Requested)

**NORTH** – 40.367685 / -104.433278

Site Photos (May 14<sup>th</sup>, 2025)



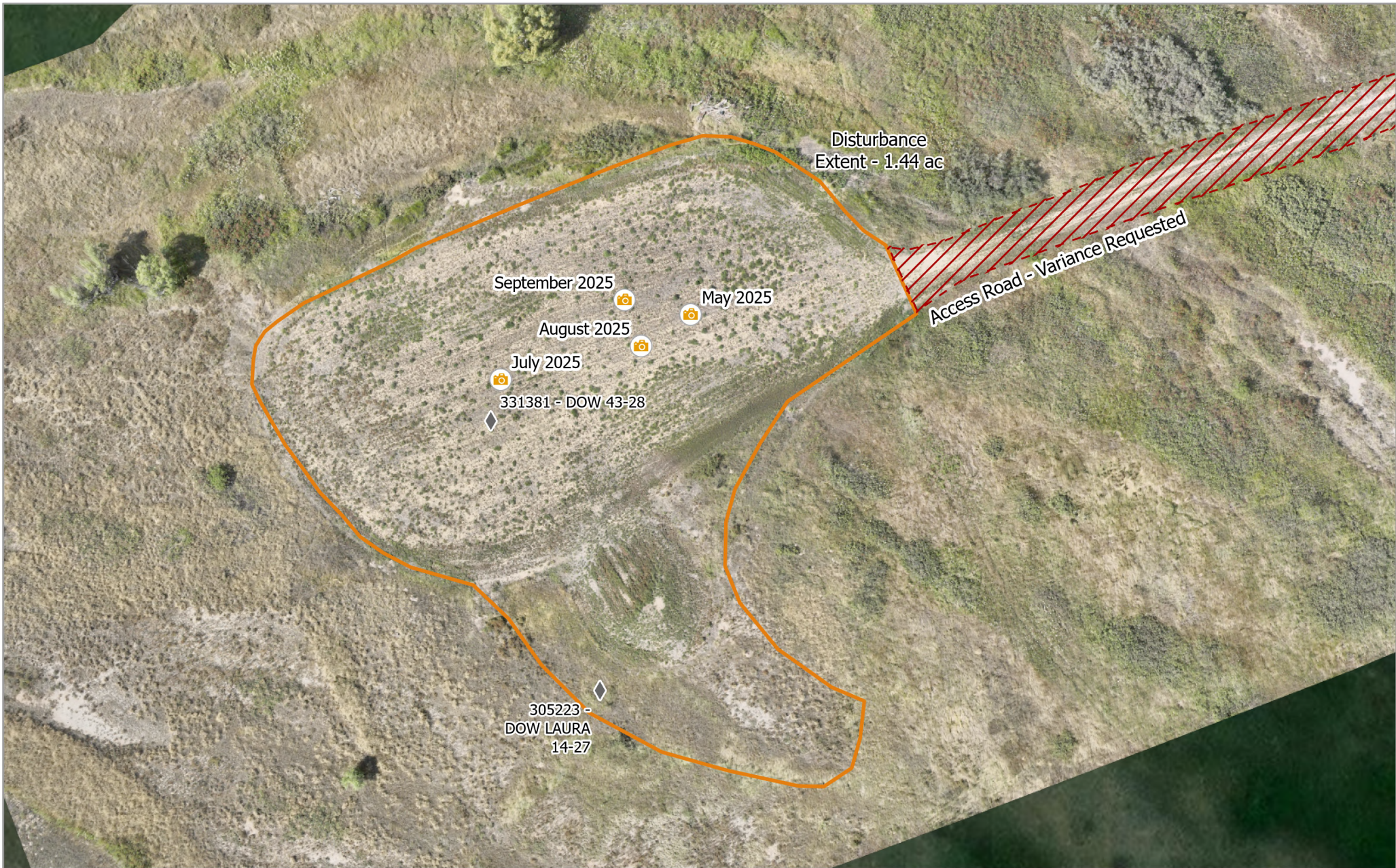
Well Pad Ground Photo

**NORTH** – 40.368524 / -104.433006



Well Pad Ground Photo

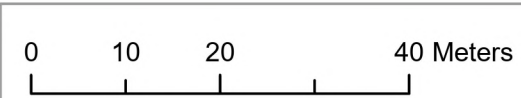
**SOUTH** – 40.368508 / -104.433009



**CIV - 305223-331381**  
**Map Extent - Site Overview**

Imagery: RS Orthomosaic  
 Imagery Date: 15 Sep 2025  
 Map Date: 27 Oct 2025  
 Datum: WGS 1984 UTM Zone 13N  
 POC: Soil Sage

- ◆ Wells
- 📷 Observation Points
- ▭ Disturbance Extent
- ▨ Access Road - Variance Requested



Scale: 1:800

Pad Location:  
 40.367970  
 -104.433210



Service Credits - Microsoft, Vantix; Sources: Esri, TomTom, Garmin, FAO, NOAA, USGS, © OpenStreetMap contributors, and the GIS User Community

