



ERM

1200 17th Street
Floor 10
Denver, CO, 80202

T +1 303 741-5050
erm.com

23 October 2025

Spike State GWS CC 30-02

Remediation #26817

Operator NOBLE #100322

This Supplemental Site Investigation Report has been prepared by Environmental Resources Management, Inc. (ERM), on behalf of Noble Energy, Inc. (Noble), for Spike State GWS CC 30-02, Remediation #26817.

BACKGROUND

Pursuant to ECMC Rule 911, a site investigation was conducted pertaining to the Spike State GWS CC 30-02 wellhead and flowline decommissioning. The wellhead was cut and capped per Colorado Energy and Carbon Management Commission (ECMC) rules. The flowline was removed on 6/6/2023, and the ECMC was notified on Form 44 Document # 403537200.

Confirmatory sampling conducted in April and June 2023 as part of initial wellhead and flowline closure activities revealed exceedances of ECMC Table 915-1 regulatory standards for soil quality. Closure activities are documented in the Site Investigation and Remediation Work Plan (Supplemental Form 27), submitted to the ECMC on 19 March 2024, Document #403515934.

Analytical results from wellhead soil sample WH-FS-01-@6' reported a pH exceedance via ECMC Table 915-1 regulatory range of 6.0 – 8.3 Standard Units (SUs), with an analytical result of 8.45 SU.

SITE INVESTIGATION ACTIVITIES

SOIL SAMPLING

On 14 July 2024, ERM conducted shallow delineation and background soil sampling using a hand auger around the former wellhead to delineate for the previous pH exceedance, as shown in Figure 2.

ERM advanced one confirmation soil boring (WH-01) located at the former wellhead. Samples were collected at 6-feet below ground surface (bgs) at the boring location.

ERM advanced one confirmation soil boring (WH-02) located near the former wellhead. Samples were collected at 2-feet bgs at the boring location.

ERM advanced six confirmation soil borings (FL-01, FL-02, FL-03, FL-04, FL-05, FL-06) located along the former flowline. Samples were collected at 3 or 4-foot bgs as appropriate at each respective boring location.

ERM advanced four soil borings (BG-01 through BG-04) to serve as nearby, non-impacted, sampling locations to evaluate background concentrations for the respective target analytes. Samples were collected at 3, 4, and/or 6-foot bgs as appropriate at each respective boring location.

A total of 18 soil samples, comprising 8 confirmation samples and 10 background samples, were submitted to Pace Analytical, an accredited facility located in Mt. Juliet, Tennessee for complete Table 915-1 analytical suite analysis except for background samples which were analyzed for Soil Suitability for Reclamation (SSR) and metals.

RESULTS

Analytical results from the July 2025 supplemental site investigation are detailed in Tables 2-5 and Figures 3-5. The complete encrypted analytical report from Pace Analytical is included as an attachment with the respective Form 27 submittal of this report.

Upon receipt of laboratory analytical results, data were reviewed for general quality control and quality assurance measures. The following key observations and data qualifiers were noted:

- The temperature of soil samples at the time of laboratory receipt was 1.5 degrees Celsius (°C), which is within the acceptable range of 0°C to 6°C.

The Following lab qualifier codes were received:

- P1 RPD value not applicable for sample concentrations less than 5 times the reporting limit.
- Chromium (VI) minimum detection limit exceeded ECMC GSSL of 0.00067 mg/kg with a value of 0.200 mg/kg.

BACKGROUND SAMPLES

The following background samples exceed ECMC Table 915-1 for:

- Arsenic Residential Soil Screening Level (RSSL) standard of 0.68 milligrams per kilograms (mg/kg) for all background samples, with results ranging from 1.03 to 1.60 mg/kg.
- Selenium Groundwater Soil Screening Level (GSSL) standard of 0.26 mg/kg at samples 26817-BG-04-SO-3-20250714, 26817-BG-01-SO-3-20250714, and 26817-BG-04-SO-4-20250714, with results ranging between 0.273 – 0.367 mg/kg.

WELLHEAD WH-01 CONFIRMATION SAMPLES

As shown in Tables 2-5 and Figures 3-5, the following WH-01 delineation samples exceed ECMC Table 915-1 for:

- Arsenic RSSL standard of 0.68 mg/kg at sample 26817-WH-01-SO-6-20250714, with a result of 1.46 mg/kg. When compared to the maximum arsenic concentration 1.60 mg/kg of nearby background soil samples, multiplied by 1.25 (2.00 mg/kg), 26817-WH-01-SO-6-20250714 is found to be at or below the calculated background maximum value.

WELLHEAD WH-02 CONFIRMATION SAMPLES

As shown in Tables 2-5 and Figures 3-5, the following WH-02 confirmation samples exceed ECMC Table 915-1 for:

- Arsenic RSSL standard of 0.68 mg/kg at sample 26817-WH-02-SO-2-20250714, with a result of 1.46 mg/kg. When compared to the maximum arsenic concentration 1.60 mg/kg of nearby background soil samples, multiplied by 1.25 (2.00 mg/kg), 26817-WH-02-SO-2-20250714 is found to be at or below the calculated background maximum value.
- Selenium GSSL standard of 0.26 mg/kg at sample 26817-WH-02-SO-2-20250714, with a result of 0.438 mg/kg. When compared to the maximum selenium concentration 0.367 mg/kg of nearby background soil samples, multiplied by 1.25 (0.459 mg/kg), 26817-WH-02-SO-2-20250714 is found to be at or below the calculated background maximum value.

FLOWLINE FL- CONFIRMATION SAMPLES

As shown in Tables 1-5 and Figures 3-5, the following flowline FL- confirmation samples exceed ECMC Table 915-1 for:

- Arsenic RSSL standard of 0.68 mg/kg at all six samples, with a results ranging between 0.990 – 1.57 mg/kg. When compared to the maximum arsenic concentration 1.60 mg/kg of nearby background soil samples, multiplied by 1.25 (2.00 mg/kg), all six samples are found to be at or below the calculated background maximum value.
- Selenium GSSL standard of 0.26 mg/kg at samples 26817-FL-01-SO-3-20250714, 26817-FL-02-SO-4-20250714, and 26817-FL-05-SO-4-20250714 with results ranging between of 0.267 – 0.291 mg/kg. When compared to the maximum selenium concentration 0.367 mg/kg of nearby background soil samples, multiplied by 1.25 (0.459 mg/kg), all samples are found to be at or below the calculated background maximum value.

NEXT STEPS

In consideration of background soil sample results, laboratory analytical results indicate that all point of compliance soil samples either meet ECMC Table 915-1 soil standards or are within site-specific background values. ERM does not recommend additional soil sampling.

Drawn By: Kara Batdorff

M:\US\Projects\A-C\Chevron\BBU Remediation Field Survey\ArcGIS\Scripting\October 2025\26817_SPIKE\STATEGWS\CC3002_created20251020_0830.aprx\26817_SPIKE\STATEGWS\CC3002_F1_SiteLocation_REVISED: 10/23/2025_SCALE: 1:126,720 when printed at 8.5x11

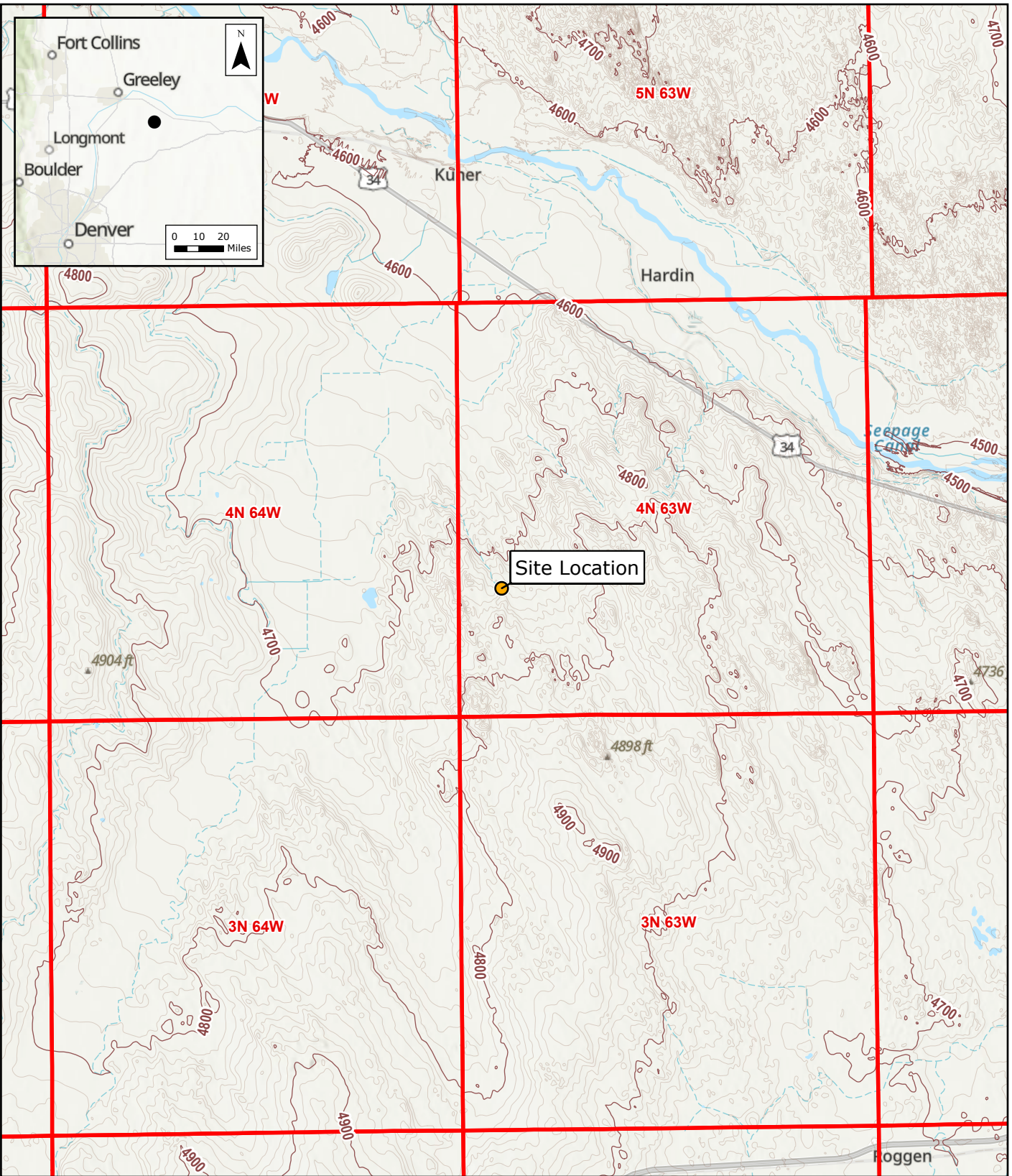
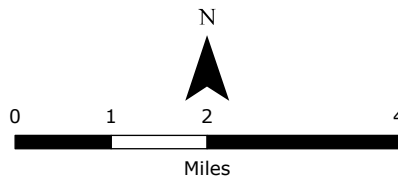
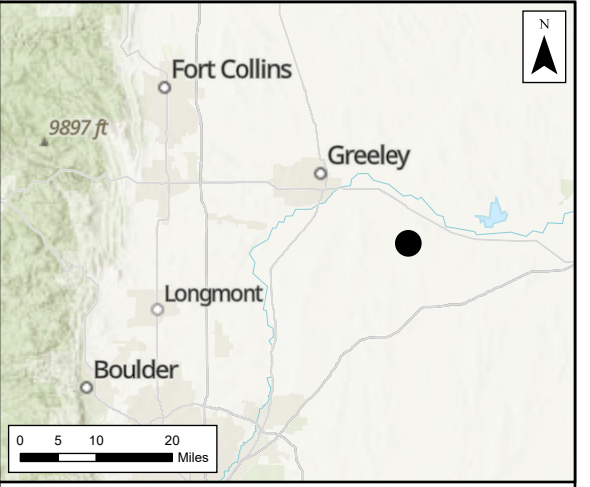
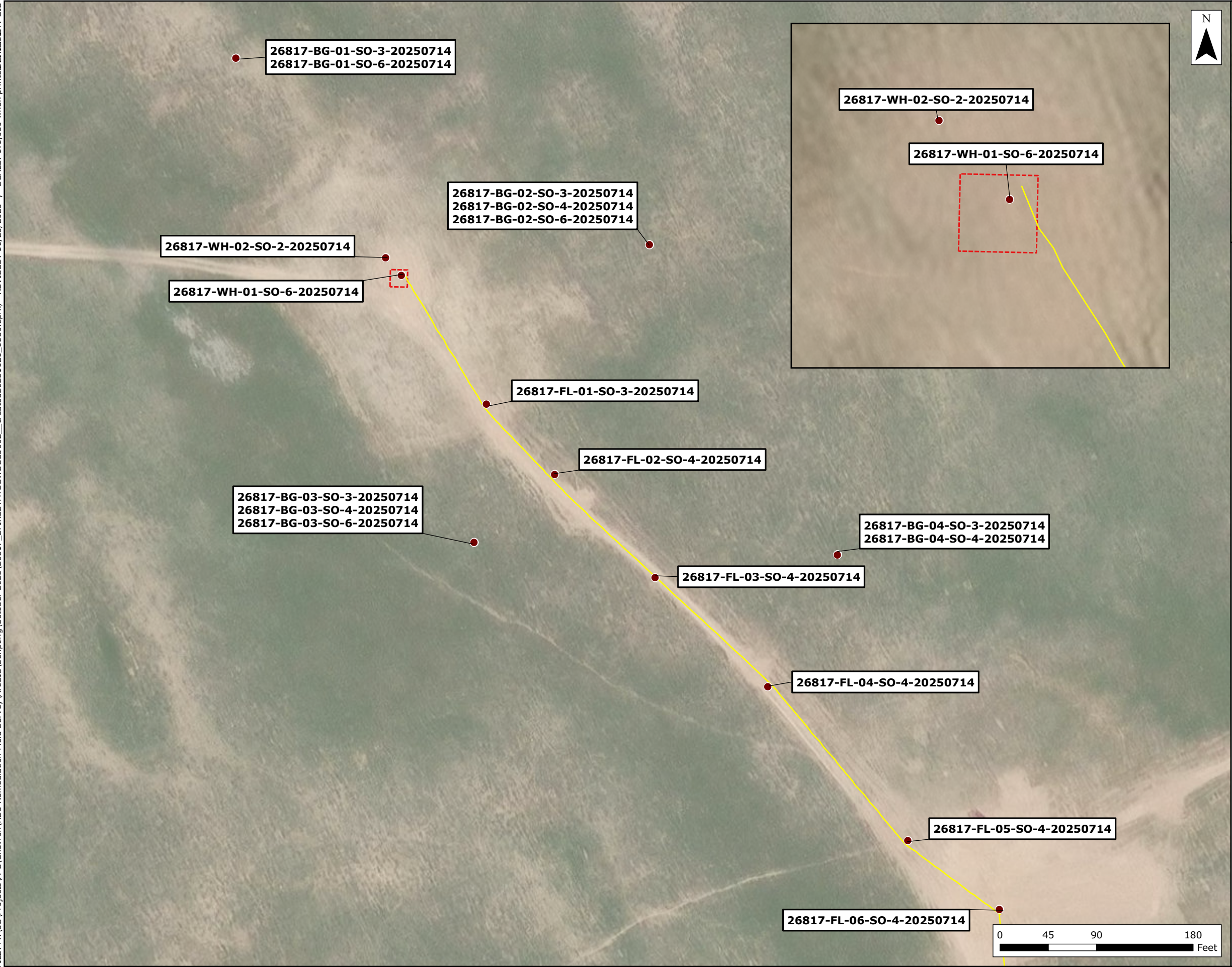


Figure 1
Topographic Site Location
SPIKE STATE GWS CC 30-02
REM# 26817
Operator: 100322
 RBU Remediation Field Survey
 Chevron
 Weld County, CO
 104.47789°W 40.28857°N
 NWNE Sec30 T4N R63W PM6
 API# 123-15820

N = North
 E = East
 S = South
 W = West
 Sec = Section
 T = Township
 R = Range
 PM = Principal Meridian



FILE: M:\US\Projects\VA-C\Chevron\RBUR Remediation Field Survey\ArcGIS\Scripting\October_2025\26817_SPIKESTATEGWS\CC3002_created20251020_0830.aprx, REVISED: 10/23/2025, SCALE: 1:1,080 when printed DRAWN BY: GIS



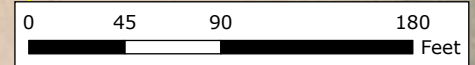
Legend

- Soil Sample Location
- Approximate Flowline
- Initial Assessment Boundary

Notes:

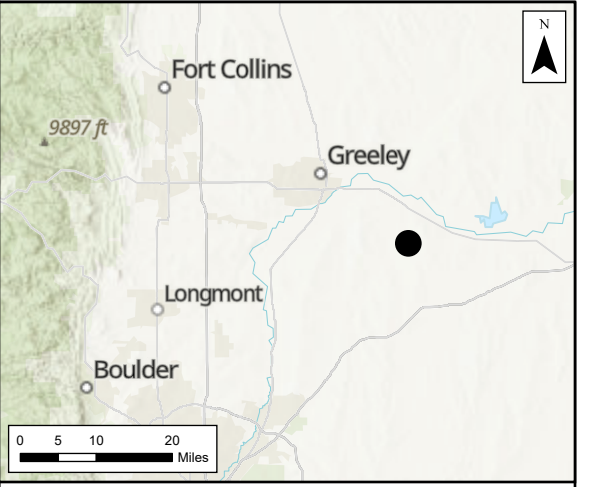
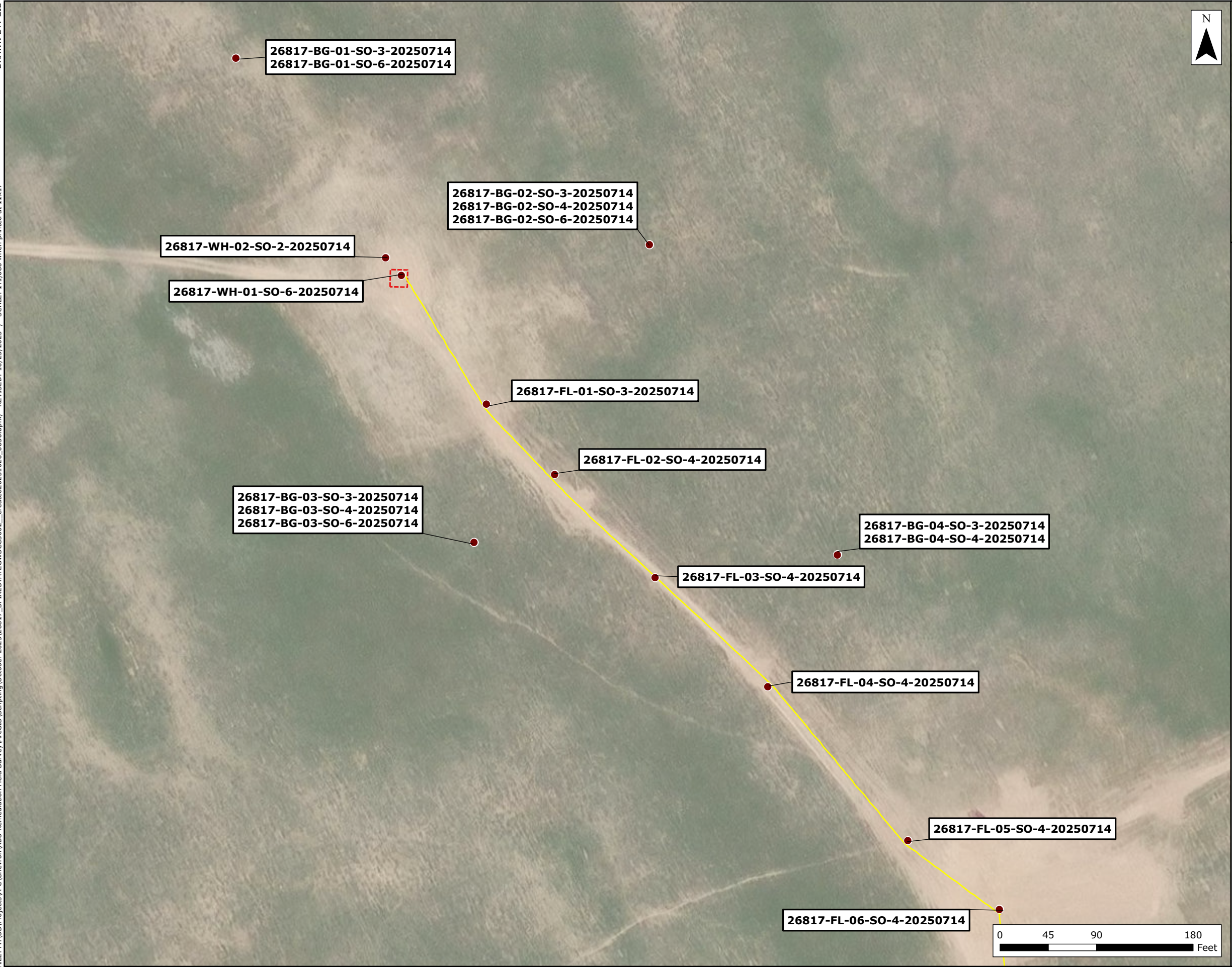
BG = Background
 FL = Flowline
 WH = Wellhead
 N = North
 E = East
 S = South
 W = West
 Sec = Section
 T = Township
 R = Range
 PM = Principal Meridian

Figure 2
Soil Sample Locations
 SPIKE STATE GWS CC 30-02
 REM# 26817
 Operator: 100322
 RBUR Remediation Field Survey
 Chevron
 Weld County, CO
 104.47789°W 40.28857°N
 NWNE Sec30 T4N R63W PM6
 API# 123-15820



DRAWN BY: GIS

FILE: M:\US\Projects\A-Chevron\RBURemediationFieldSurvey\ArcGIS\Scripting\October_2025\26817_SPIKESTATEGWS\CC3002_created20251020_0830.aprx, REVISED: 10/23/2025, SCALE: 1:1,080 when printed at 11x17



Legend

- Soil Sample Location
- Approximate Flowline
- Initial Assessment Boundary

Notes:

No samples during the sampling event on 24 July 2025 had values above ECMC Table 915-1 Clean-Up Concentrations (Organics Exceedance).

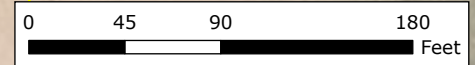
Analytical results below laboratory detection limits, or within compliance of ECMC Table 915-1 not shown.

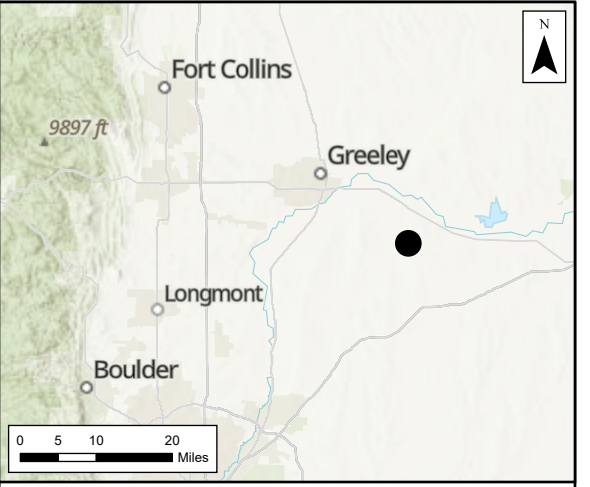
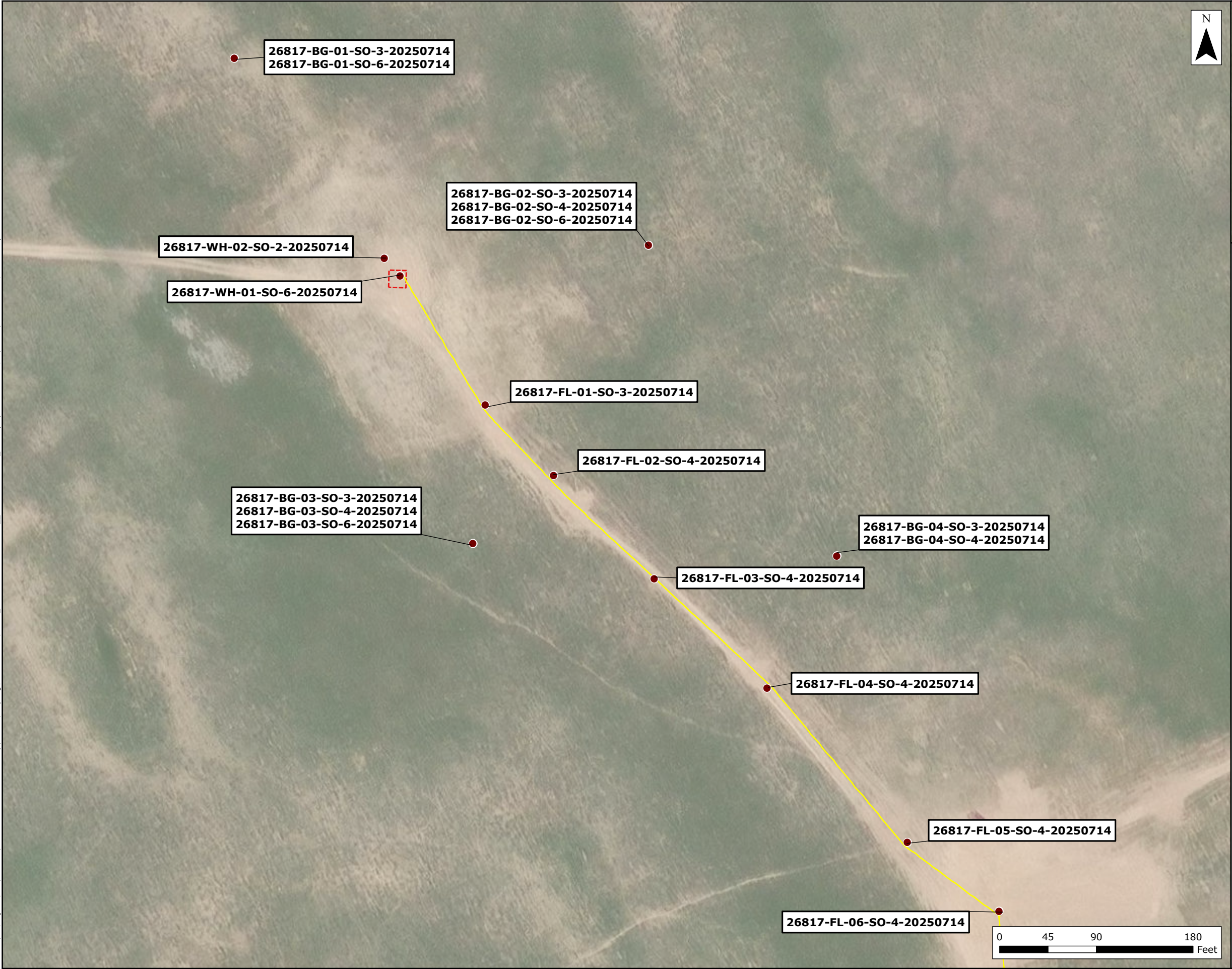
ECMC = Energy and Carbon Management Commission
 ft bgs = feet below ground surface
 BG = Background
 FL = Flowline
 WH = Wellhead
 GSSL = Groundwater Soil Screening Levels

**Figure 3
 Exceedance Values
 in Soil Samples - Organics**

SPIKE STATE GWS CC 30-02
 REM# 26817
 Operator: 100322
 RBURemediationFieldSurvey
 Chevron
 Weld County, CO
 104.47789°W 40.28857°N
 NWNE Sec30 T4N R63W PM6
 API# 123-15820

N = North
 E = East
 S = South
 W = West
 Sec = Section
 T = Township
 R = Range
 PM = Principal Meridian





Legend

- Soil Sample Location
- Approximate Flowline
- Initial Assessment Boundary

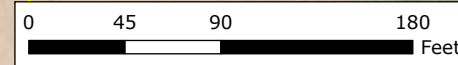
Notes:
No samples during the sampling event on 24 July 2025 had values above ECMC Table 915-1 Clean-Up Concentrations (SSR Exceedance).

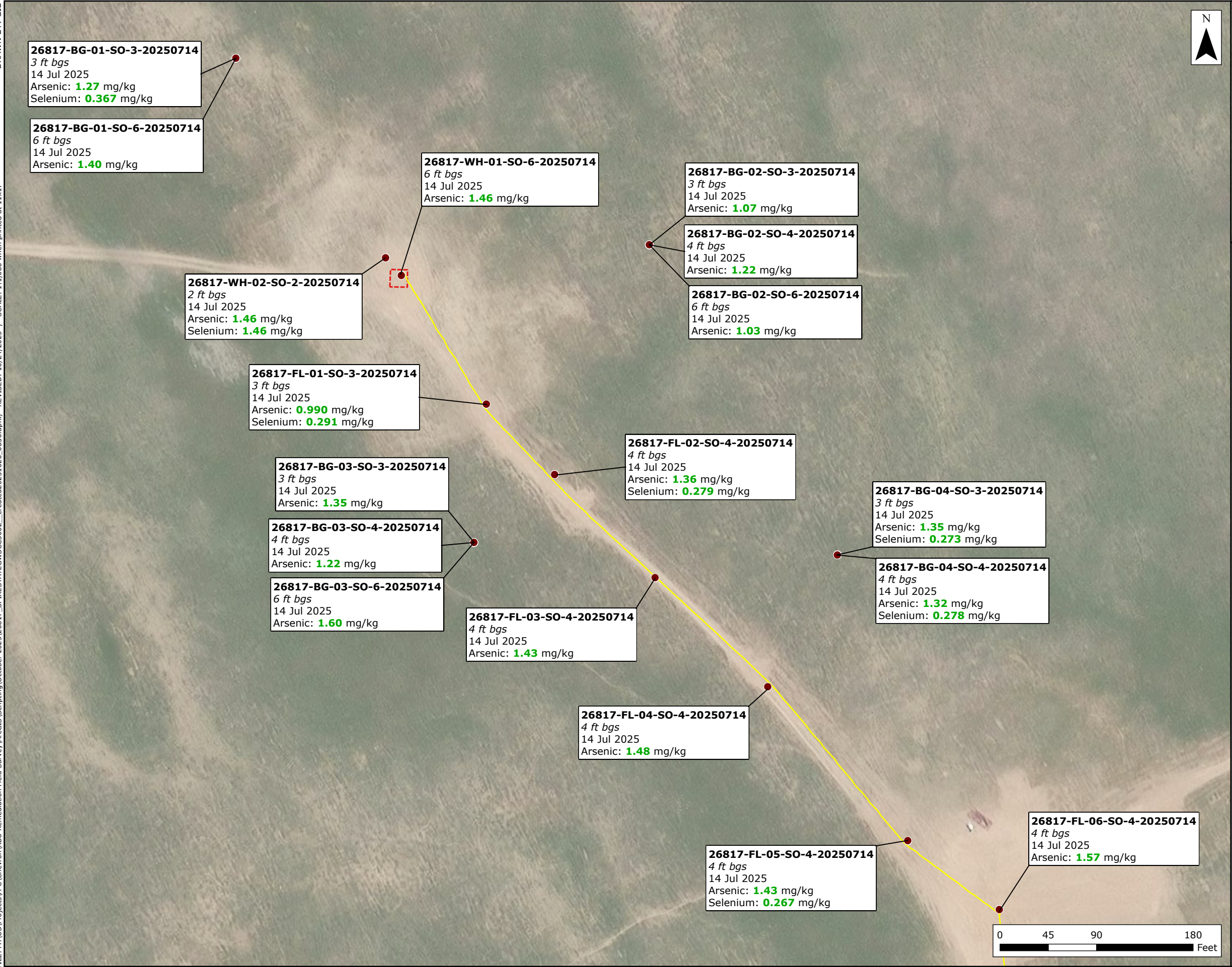
Analytical results below laboratory detection limits, or within compliance of ECMC Table 915-1 not shown.

ECMC = Energy and Carbon Management Commission
 ft bgs = feet below ground surface
 BG = Background
 FL = Flowline
 WH = Wellhead
 GSSL = Groundwater Soil Screening Levels

Figure 4
Exceedance Values
in Soil Samples - SSR
 SPIKE STATE GWS CC 30-02
 REM# 26817
 Operator: 100322
 RBURemediationFieldSurvey
 Chevron
 Weld County, CO
 104.47789°W 40.28857°N
 NWNE Sec30 T4N R63W PM6
 API# 123-15820

N = North
 E = East
 S = South
 W = West
 Sec = Section
 T = Township
 R = Range
 PM = Principal Meridian





26817-BG-01-SO-3-20250714
 3 ft bgs
 14 Jul 2025
 Arsenic: **1.27** mg/kg
 Selenium: **0.367** mg/kg

26817-BG-01-SO-6-20250714
 6 ft bgs
 14 Jul 2025
 Arsenic: **1.40** mg/kg

26817-WH-02-SO-2-20250714
 2 ft bgs
 14 Jul 2025
 Arsenic: **1.46** mg/kg
 Selenium: **1.46** mg/kg

26817-FL-01-SO-3-20250714
 3 ft bgs
 14 Jul 2025
 Arsenic: **0.990** mg/kg
 Selenium: **0.291** mg/kg

26817-BG-03-SO-3-20250714
 3 ft bgs
 14 Jul 2025
 Arsenic: **1.35** mg/kg

26817-BG-03-SO-4-20250714
 4 ft bgs
 14 Jul 2025
 Arsenic: **1.22** mg/kg

26817-BG-03-SO-6-20250714
 6 ft bgs
 14 Jul 2025
 Arsenic: **1.60** mg/kg

26817-FL-03-SO-4-20250714
 4 ft bgs
 14 Jul 2025
 Arsenic: **1.43** mg/kg

26817-FL-04-SO-4-20250714
 4 ft bgs
 14 Jul 2025
 Arsenic: **1.48** mg/kg

26817-FL-05-SO-4-20250714
 4 ft bgs
 14 Jul 2025
 Arsenic: **1.43** mg/kg
 Selenium: **0.267** mg/kg

26817-WH-01-SO-6-20250714
 6 ft bgs
 14 Jul 2025
 Arsenic: **1.46** mg/kg

26817-BG-02-SO-3-20250714
 3 ft bgs
 14 Jul 2025
 Arsenic: **1.07** mg/kg

26817-BG-02-SO-4-20250714
 4 ft bgs
 14 Jul 2025
 Arsenic: **1.22** mg/kg

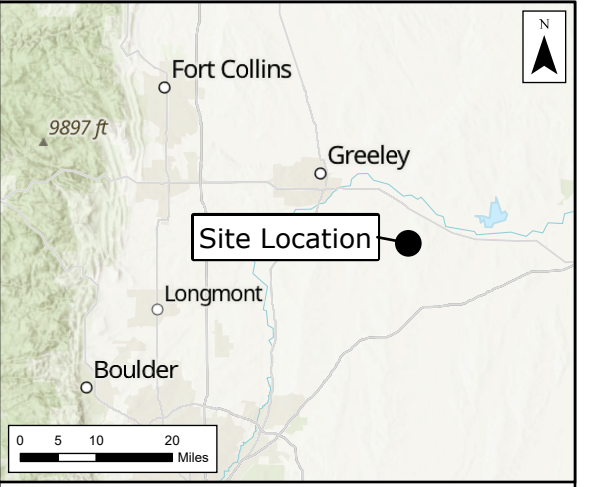
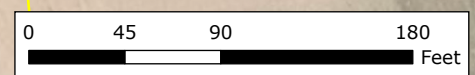
26817-BG-02-SO-6-20250714
 6 ft bgs
 14 Jul 2025
 Arsenic: **1.03** mg/kg

26817-FL-02-SO-4-20250714
 4 ft bgs
 14 Jul 2025
 Arsenic: **1.36** mg/kg
 Selenium: **0.279** mg/kg

26817-BG-04-SO-3-20250714
 3 ft bgs
 14 Jul 2025
 Arsenic: **1.35** mg/kg
 Selenium: **0.273** mg/kg

26817-BG-04-SO-4-20250714
 4 ft bgs
 14 Jul 2025
 Arsenic: **1.32** mg/kg
 Selenium: **0.278** mg/kg

26817-FL-06-SO-4-20250714
 4 ft bgs
 14 Jul 2025
 Arsenic: **1.57** mg/kg



Legend

- Soil Sample Location
- Approximate Flowline
- Initial Assessment Boundary

Notes:
 Results in milligrams per kilogram (mg/kg) unless otherwise noted.
Green values are above ECMC Table 915-1 limit(s) but are within 1.25x background concentrations.
Red values are above ECMC Table 915-1 and/or calculated background levels (1.25x max background values).
 Analytical results below laboratory detection limits, or within compliance of ECMC Table 915-1 not shown. Non-background samples below maximum calculated site-specific background levels are not shown.

ECMC Table 915-1 GSSLs Listed in mg/kg
 Arsenic = 0.290 (max. BG = 1.60) (1.25x max. BG = 2.00)
 Selenium = 0.260 (max. BG = 0.367) (1.25x max. BG = 0.459)

ECMC = Energy and Carbon Management Commission
 ft bgs = feet below ground surface
 BG = Background
 FL = Flowline
 WH = Wellhead

Figure 5
Exceedance Values
in Soil Samples - Metals
 SPIKE STATE GWS CC 30-02
 REM# 26817
 Operator: 100322
 RBURemediationFieldSurvey
 Chevron
 Weld County, CO
 104.47789°W 40.28857°N
 NWNE Sec30 T4N R63W PM6
 API# 123-15820

N = North
 E = East
 S = South
 W = West
 Sec = Section
 T = Township
 R = Range
 PM = Principal Meridian



TABLE 1
FIELD DATA SUMMARY TABLE
OPERATOR 100322
SPIKE STATE GWS CC 30-02, WELD COUNTY, COLORADO
REM # 26817

Sample ID	Sample Date	Depth (ft bgs)	GPS Data Latitude	GPS Data Longitude	PDOP Value	VOC Concentration (ppm)
26817-BG-01-SO-3-20250714	07/14/2025	3	40.28913	-104.47845		5.6
26817-BG-01-SO-6-20250714	07/14/2025	6	40.28913	-104.47845		0.4
26817-BG-02-SO-3-20250714	07/14/2025	3	40.28864	-104.47708		4.7
26817-BG-02-SO-4-20250714	07/14/2025	4	40.28864	-104.47708		3
26817-BG-02-SO-6-20250714	07/14/2025	6	40.28864	-104.47708		6.8
26817-BG-03-SO-3-20250714	07/14/2025	3	40.28789	-104.47767		2.3
26817-BG-03-SO-4-20250714	07/14/2025	4	40.28789	-104.47767		45.2
26817-BG-03-SO-6-20250714	07/14/2025	6	40.28789	-104.47767		13.3
26817-BG-04-SO-3-20250714	07/14/2025	3	40.28785	-104.47646		3.2
26817-BG-04-SO-4-20250714	07/14/2025	4	40.28785	-104.47646		7.3
26817-FL-01-SO-3-20250714	07/14/2025	3	40.28824	-104.47763		1.5
26817-FL-02-SO-4-20250714	07/14/2025	4	40.28806	-104.47740		5.6
26817-FL-03-SO-4-20250714	07/14/2025	4	40.28779	-104.47707		1.1
26817-FL-04-SO-4-20250714	07/14/2025	4	40.28751	-104.47670		1.5
26817-FL-05-SO-4-20250714	07/14/2025	4	40.28711	-104.47624		29.4
26817-FL-06-SO-4-20250714	07/14/2025	4	40.28693	-104.47593		16.8
26817-WH-01-SO-6-20250714	07/14/2025	6	40.28857	-104.47791		9.3
26817-WH-02-SO-2-20250714	07/14/2025	2	40.28862	-104.47796		1.7

Notes:

1. Global Positioning System (GPS) data is provided in decimal degrees using North American Datum (NAD) 83 UTM Zone 13 North.
2. Volatile organic compound (VOC) concentrations are measured in the field using a photoionization detector (PID).

ECMC = Energy and Carbon Management Commission
PDOP = Position Dilution of Precision
ppm = Parts per million
ft bgs = Feet below ground surface

TABLE 2
SUMMARY OF VOLATILE ORGANIC SOIL CHEMISTRY DATA
OPERATOR 100322
SPIKE STATE GWS CC 30-02, WELD COUNTY, COLORADO
REM # 26817

Sample ID	Sample Date	Depth (ft bgs)	Benzene (mg/kg)	Toluene (mg/kg)	Ethyl-benzene (mg/kg)	Xylenes (mg/kg)	1,2,4-Trimethyl-Benzene (mg/kg)	1,3,5-Trimethyl-Benzene (mg/kg)	Naphthalene (mg/kg)	TPH (mg/kg)	TPH GRO (mg/kg)	TPH DRO (mg/kg)	TPH ORO (mg/kg)
ECMC Table 915-1 Limits (Residential SSL)			1.2	490	5.8	58	30	27	2	500	500**		
ECMC Table 915-1 Limits (Protection of Groundwater SSL)			0.0026	0.69	0.78	9.9	0.0081	0.0087	0.0038	500	500**		
26817-FL-01-SO-3-20250714	07/14/2025	3	< 0.00100	< 0.0100	< 0.0100	< 0.100	< 0.00500	< 0.00500	< 0.00300	< 4.00	< 0.100	< 4.00	< 4.00
26817-FL-02-SO-4-20250714	07/14/2025	4	< 0.00100	< 0.0100	< 0.0100	< 0.100	< 0.00500	< 0.00500	< 0.00300	< 4.00	< 0.100	< 4.00	< 4.00
26817-FL-03-SO-4-20250714	07/14/2025	4	< 0.00100	< 0.0100	< 0.0100	< 0.100	< 0.00500	< 0.00500	< 0.00300	< 4.00	< 0.100	< 4.00	< 4.00
26817-FL-04-SO-4-20250714	07/14/2025	4	< 0.00100	< 0.0100	< 0.0100	< 0.100	< 0.00500	< 0.00500	< 0.00300	< 4.00	< 0.100	< 4.00	< 4.00
26817-FL-05-SO-4-20250714	07/14/2025	4	< 0.00100	< 0.0100	< 0.0100	< 0.100	< 0.00500	< 0.00500	< 0.00300	< 4.00	< 0.100	< 4.00	< 4.00
26817-FL-06-SO-4-20250714	07/14/2025	4	< 0.00100	< 0.0100	< 0.0100	< 0.100	< 0.00500	< 0.00500	< 0.00300	< 4.00	< 0.100	< 4.00	< 4.00
26817-WH-01-SO-6-20250714	07/14/2025	6	< 0.00100	< 0.0100	< 0.0100	< 0.100	< 0.00500	< 0.00500	< 0.00300	< 4.00	< 0.100	< 4.00	< 4.00
26817-WH-02-SO-2-20250714	07/14/2025	2	< 0.00100	< 0.0100	< 0.0100	< 0.100	< 0.00500	< 0.00500	< 0.00300	< 4.00	< 0.100	< 4.00	< 4.00

Notes:

1. Bold values exceed the ECMC Table 915-1 limit(s)
2. Red & blue highlighted soil analytical values indicate an exceedance of the referenced soil screening level (SSL)
3. * Indicates laboratory minimum detection limit in excess of SSL
4. ** Summation of GRO+DRO+ORO must be less than 500 mg/kg

ECMC = Energy and Carbon Management Commission
(-) = Analytical result is less than the indicated laboratory reporting limit.
TPH-GRO = Total petroleum hydrocarbons - gasoline range organics
TPH-DRO = Total petroleum hydrocarbons - diesel range organics
TPH-ORO = Total petroleum hydrocarbons - oil range organics
mg/kg = Milligrams per kilogram
ft bgs = Feet below ground surface
NA - Not analyzed

Assume wet weight on all historical data unless the lab data specifies wet vs. dry.

TABLE 3
SUMMARY OF POLYCYCLIC AROMATIC HYDROCARBON SOIL CHEMISTRY DATA
OPERATOR 100322
SPIKE STATE GWS CC 30-02, WELD COUNTY, COLORADO
REM # 26817

Sample ID	Sample Date	Depth (ft bgs)	Acenaphthene (mg/kg)	Anthracene (mg/kg)	Benzo(a)anthracene (mg/kg)	Benzo(a)pyrene (mg/kg)	Benzo(b)fluoranthene (mg/kg)	Benzo(k)fluoranthene (mg/kg)	Chrysene (mg/kg)	Dibenzo(a,h)anthracene (mg/kg)	Fluoranthene (mg/kg)	Fluorene (mg/kg)	Indeno(1,2,3-cd)pyrene (mg/kg)	Pyrene (mg/kg)	1-Methyl-Naphthalene (mg/kg)	2-Methyl-Naphthalene (mg/kg)
ECMC Table 915-1 Limits (Residential SSL)			360	1800	1.1	0.11	1.1	11	110	0.11	240	240	1.1	180	18	24
ECMC Table 915-1 Limits (Protection of Groundwater SSL)			0.55	5.8	0.011	0.24	0.3	2.9	9	0.096	8.9	0.54	0.98	1.3	0.006	0.019
26817-FL-01-SO-3-20250714	07/14/2025	3	< 0.0330	< 0.0330	< 0.00600	< 0.0330	< 0.0330	< 0.0330	< 0.0330	< 0.0330	< 0.0330	< 0.0330	< 0.0330	< 0.0330	< 0.00300	< 0.0120
26817-FL-02-SO-4-20250714	07/14/2025	4	< 0.0330	< 0.0330	< 0.00600	< 0.0330	< 0.0330	< 0.0330	< 0.0330	< 0.0330	< 0.0330	< 0.0330	< 0.0330	< 0.0330	< 0.00300	< 0.0120
26817-FL-03-SO-4-20250714	07/14/2025	4	< 0.0330	< 0.0330	< 0.00600	< 0.0330	< 0.0330	< 0.0330	< 0.0330	< 0.0330	< 0.0330	< 0.0330	< 0.0330	< 0.0330	< 0.00300	< 0.0120
26817-FL-04-SO-4-20250714	07/14/2025	4	< 0.0330	< 0.0330	< 0.00600	< 0.0330	< 0.0330	< 0.0330	< 0.0330	< 0.0330	< 0.0330	< 0.0330	< 0.0330	< 0.0330	< 0.00300	< 0.0120
26817-FL-05-SO-4-20250714	07/14/2025	4	< 0.0330	< 0.0330	< 0.00600	< 0.0330	< 0.0330	< 0.0330	< 0.0330	< 0.0330	< 0.0330	< 0.0330	< 0.0330	< 0.0330	< 0.00300	< 0.0120
26817-FL-06-SO-4-20250714	07/14/2025	4	< 0.0330	< 0.0330	< 0.00600	< 0.0330	< 0.0330	< 0.0330	< 0.0330	< 0.0330	< 0.0330	< 0.0330	< 0.0330	< 0.0330	< 0.00300	< 0.0120
26817-WH-01-SO-6-20250714	07/14/2025	6	< 0.0330	< 0.0330	< 0.00600	< 0.0330	< 0.0330	< 0.0330	< 0.0330	< 0.0330	< 0.0330	< 0.0330	< 0.0330	< 0.0330	< 0.00300	< 0.0120
26817-WH-02-SO-2-20250714	07/14/2025	2	< 0.0330	< 0.0330	< 0.00600	< 0.0330	< 0.0330	< 0.0330	< 0.0330	< 0.0330	< 0.0330	< 0.0330	< 0.0330	< 0.0330	< 0.00300	< 0.0120

Notes:

1. Bold values exceed the ECMC Table 915-1 limit(s)
2. Red & blue highlighted soil analytical values indicate an exceedance of the referenced soil screening level (SSL)
3. * Indicates laboratory minimum detection limit in excess of SSL

ECMC = Energy and Carbon Management Commission
mg/kg = Milligrams per kilogram
ft bgs = Feet below ground surface
NA - Not analyzed

Assume wet weight on all historical data unless the lab data specifies wet vs. dry.

TABLE 4
SUMMARY OF SOIL SUITABILITY FOR RECLAMATION
OPERATOR 100322
SPIKE STATE GWS CC 30-02, WELD COUNTY, COLORADO
REM # 26817

Sample ID	Sample Date	Depth (ft bgs)	pH (Standard Units)	EC (mmhos/cm)	SAR (Standard Units)	Boron (mg/L)
ECMC Table 915-1 Soil Suitability Limits			6-8.3	4	6	2
26817-BG-01-SO-3-20250714	07/14/2025	3	6.96	0.0649	0.194	< 0.100
26817-BG-01-SO-6-20250714	07/14/2025	6	7.05	0.0583	0.199	< 0.100
26817-BG-02-SO-3-20250714	07/14/2025	3	7.01	0.0368	0.135	< 0.100
26817-BG-02-SO-4-20250714	07/14/2025	4	6.90	0.0408	0.164	< 0.100
26817-BG-02-SO-6-20250714	07/14/2025	6	7.20	0.0329	0.157	< 0.100
26817-BG-03-SO-3-20250714	07/14/2025	3	6.54	0.0639	0.189	< 0.100
26817-BG-03-SO-4-20250714	07/14/2025	4	6.53	0.0618	0.112	< 0.100
26817-BG-03-SO-6-20250714	07/14/2025	6	7.07	0.0622	0.210	< 0.100
26817-BG-04-SO-3-20250714	07/14/2025	3	6.63	0.0751	0.0948	< 0.100
26817-BG-04-SO-4-20250714	07/14/2025	4	6.94	0.0485	0.0879	< 0.100
26817-FL-01-SO-3-20250714	07/14/2025	3	7.90	0.332	0.356	< 0.100
26817-FL-02-SO-4-20250714	07/14/2025	4	7.94	0.210	0.218	< 0.100
26817-FL-03-SO-4-20250714	07/14/2025	4	7.84	0.208	0.129	< 0.100
26817-FL-04-SO-4-20250714	07/14/2025	4	8.01	0.265	0.535	< 0.100
26817-FL-05-SO-4-20250714	07/14/2025	4	7.88	0.247	0.139	< 0.100
26817-FL-06-SO-4-20250714	07/14/2025	4	8.06	0.240	0.278	< 0.100
26817-WH-01-SO-6-20250714	07/14/2025	6	8.05	0.318	1.07	< 0.100
26817-WH-02-SO-2-20250714	07/14/2025	2	7.29	0.717	0.695	< 0.100
Maximum Background Concentration			NA	NA	NA	NA
Notes:						
1. Bold faced values exceed the ECMC Table 915-1 limit(s), but are within background concentrations.						
2. Bold faced values exceed the ECMC Table 915-1 limit(s) and native background concentrations.						
3. Brown highlighted soil analytical values indicate an exceedance of Table 915-1.						
ECMC = Energy and Carbon Management Commission						
NA - Not analyzed						
ft bgs = Feet below ground surface						
mg/L = milligrams per liter						
Assume wet weight on all historical data unless the lab data specifies wet vs. dry.						

TABLE 5
SUMMARY OF METALS IN SOIL CHEMISTRY DATA
OPERATOR 100322
SPIKE STATE GWS CC 30-02, WELD COUNTY, COLORADO
REM # 26817

Sample ID	Sample Date	Depth (ft bgs)	Arsenic (mg/kg)	Barium (mg/kg)	Cadmium (mg/kg)	Chromium (VI) (mg/kg)	Copper (mg/kg)	Lead (mg/kg)	Nickel (mg/kg)	Selenium (mg/kg)	Silver (mg/kg)	Zinc (mg/kg)
ECMC Table 915-1 Limits (Residential SSL)			0.68	15000	71	0.3	3100	400	1500	390	390	23000
ECMC Table 915-1 Limits (Protection of Groundwater SSL)			0.29	82	0.38	0.00067	46	14	26	0.26	0.8	370
26817-BG-01-SO-3-20250714	07/14/2025	3	1.27	34.7	< 0.100	< 0.200*	< 10.0	< 10.0	< 10.0	0.367	< 0.500	< 50.0
26817-BG-01-SO-6-20250714	07/14/2025	6	1.40	38.2	< 0.100	< 0.200*	< 10.0	< 10.0	< 10.0	0.191	< 0.500	< 50.0
26817-BG-02-SO-3-20250714	07/14/2025	3	1.07	34.3	< 0.100	< 0.200*	< 10.0	< 10.0	< 10.0	0.161	< 0.500	< 50.0
26817-BG-02-SO-4-20250714	07/14/2025	4	1.22	36.7	< 0.100	< 0.200*	< 10.0	< 10.0	< 10.0	0.189	< 0.500	< 50.0
26817-BG-02-SO-6-20250714	07/14/2025	6	1.03	40.8	< 0.100	< 0.200*	< 10.0	< 10.0	< 10.0	0.102	< 0.500	< 50.0
26817-BG-03-SO-3-20250714	07/14/2025	3	1.35	45.0	< 0.100	< 0.200*	< 10.0	< 10.0	< 10.0	0.172	< 0.500	< 50.0
26817-BG-03-SO-4-20250714	07/14/2025	4	1.22	36.5	< 0.100	< 0.200*	< 10.0	< 10.0	< 10.0	0.237	< 0.500	< 50.0
26817-BG-03-SO-6-20250714	07/14/2025	6	1.60	43.7	< 0.100	< 0.200*	< 10.0	< 10.0	< 10.0	0.212	< 0.500	< 50.0
26817-BG-04-SO-3-20250714	07/14/2025	3	1.35	41.2	< 0.100	< 0.200*	< 10.0	< 10.0	< 10.0	0.273	< 0.500	< 50.0
26817-BG-04-SO-4-20250714	07/14/2025	4	1.32	43.9	< 0.100	< 0.200*	< 10.0	< 10.0	< 10.0	0.278	< 0.500	< 50.0
26817-FL-01-SO-3-20250714	07/14/2025	3	0.990	32.6	< 0.100	< 0.200*	< 10.0	< 10.0	< 10.0	0.291	< 0.500	< 50.0
26817-FL-02-SO-4-20250714	07/14/2025	4	1.36	34.2	< 0.100	< 0.200*	< 10.0	< 10.0	< 10.0	0.279	< 0.500	< 50.0
26817-FL-03-SO-4-20250714	07/14/2025	4	1.43	41.3	< 0.100	< 0.200*	< 10.0	< 10.0	< 10.0	0.179	< 0.500	< 50.0
26817-FL-04-SO-4-20250714	07/14/2025	4	1.48	34.6	< 0.100	< 0.200*	< 10.0	< 10.0	< 10.0	0.218	< 0.500	< 50.0
26817-FL-05-SO-4-20250714	07/14/2025	4	1.43	38.9	< 0.100	< 0.200*	< 10.0	< 10.0	< 10.0	0.267	< 0.500	< 50.0
26817-FL-06-SO-4-20250714	07/14/2025	4	1.57	42.9	< 0.100	< 0.200*	< 10.0	< 10.0	< 10.0	0.225	< 0.500	< 50.0
26817-WH-01-SO-6-20250714	07/14/2025	6	1.46	39.0	< 0.100	< 0.200*	< 10.0	< 10.0	< 10.0	0.136	< 0.500	< 50.0
26817-WH-02-SO-2-20250714	07/14/2025	2	1.46	45.9	0.117	< 0.200*	< 10.0	< 10.0	< 10.0	0.438	< 0.500	< 50.0
1.25x Maximum Background Concentration			2.00	NA	NA	NA	NA	NA	NA	0.459	NA	NA

Notes:

1. Bold faced values exceed the ECMC Table 915-1 limit(s), but are within 1.25x background concentrations.
2. Bold faced values exceed the ECMC Table 915-1 limit(s) and native background concentrations.
3. Red & blue highlighted soil analytical values indicate an exceedance of the referenced soil screening level (SSL).
4. Non-detect background results accounted for in the highest background concentration by using the reporting limit.

ECMC = Energy and Carbon Management Commission
(<) = Analytical result is less than the indicated laboratory reporting limit.
ft bgs = Feet below ground surface
mg/kg = Milligrams per kilogram
* Indicates laboratory minimum detection limit in excess of SSL
NA - Not analyzed

Assume wet weight on all historical data unless the lab data specifies wet vs. dry.