



**SECTOR CEMENT BOND
GAMMA RAY
CCL LOG**

Comp. OCCIDENTAL PETROLEUM CORP.
Well BRATTAIN L 12-7 JI
Field WATTENBURG
Co. WELD
State CO

Company **OCCIDENTAL PETROLEUM CORP.**
Well **BRATTAIN L 12-7 JI**
Field **WATTENBURG**
County **WELD** State **CO**

Location: API #: 05-123-21541
SW/NE
SEC 12 TWP 3N RGE 66W
PERF

Other Services
Elevation
K.B. 4980'
D.F. NA
G.L. 4970'

| | |
|---------------------------|--------------|
| Date of Service | 23-JUNE-2025 |
| Run Number | ONE |
| Depth Driller or PBTID | 8010' |
| Depth Logger | 5000' |
| Bottom Log Interval | 5000' |
| Top Log Interval | SURFACE |
| Open Hole Size | 7-7/8" |
| Type Fluid | H2O |
| Fluid Level | SURFACE |
| Fluid Density | 8.33 LB/GAL |
| Max. Recorded Temperature | NA |
| Max. Wellhead Pressure | ZERO |
| Wellhead Connection | 5K |
| Estimated Cement Top | NA |
| Unit Number | L 172458 |
| Wireline Size | 1/4" |
| Location | BRIGHTON |
| Recorded By | C. SHEPPARD |
| Witnessed By | J. CASTILLO |

| | | | | |
|-------------------|--------|-------|---------|-------|
| Surface Casing | 8-5/8" | 24# | SURFACE | 636' |
| Production Casing | 4-1/2" | 11.6# | SURFACE | 7992' |
| Liner Casing | | | | |
| Tubing Record | | | | |

<<< Fold Here >>>

All interpretations are opinions based on inferences from electrical or other measurements and Ranger Energy Services cannot and does not guarantee the accuracy or correctness of any interpretation, and Ranger Energy Services will not be liable or responsible for any loss, costs, damages, or expenses incurred or sustained by anyone resulting from any interpretation made by any of our officers, agents or employees.

Comments

N/A DENOTES NOT AVAILABLE OR NON-APPLICABLE.
LOG CORRELATED TO KB

ZERO PRESSURE APPLIED @ SURFACE

THANK YOU FOR USING RANGER ENERGY SERCVICES!!

THANK YOU FOR USING RANGER ENERGY SERVICES! FIELD TICKET #

| | | |
|--|----------------------|---------------|
| Your Ranger Energy Services Crew | Tool Data - Services | Serial Number |
| Engineer: C. SHEPPARD Operator: E. CARRANZA Operator: A. FERGUSON Operator: | | |

| | | | | | | |
|----------|-------------|-----------|-------------|-------------|-----------|-------------|
| Operator | Offset (ft) | Substrate | Description | Length (ft) | O.D. (in) | Weight (lb) |
|----------|-------------|-----------|-------------|-------------|-----------|-------------|

| Sensor | Offset (ft) | Schematic | Description | Length (ft) | O.D. (in) | Weight (lb) | |
|---------|-------------|-----------|--|--|-----------|-------------|-------|
| ErrCt | 17.33 | | Cable_Head-1_7/16 Titan 1 7/16" Cable Head | 1.02 | 1.44 | 3.31 | |
| IntTemp | 15.07 | | | | | | |
| WVFS8 | 11.82 | | | RBT-Probe (070150) Probe Radii Bond Tool with Digital Telemetry | 8.75 | 2.75 | 90.00 |
| WVFS7 | 11.82 | | | | | | |
| WVFS6 | 11.82 | | | | | | |
| WVFS5 | 11.82 | | | | | | |
| WVFS4 | 11.82 | | | | | | |
| WVFS3 | 11.82 | | | | | | |
| WVFS2 | 11.82 | | | | | | |
| WVFS1 | 11.82 | | | | | | |
| WVFCAL | 11.82 | | | | | | |
| WVF3FT | 11.82 | | | | | | |
| WVF5FT | 10.82 | | | | | | |
| CCL | 6.62 | | | | | | |
| GR | 5.38 | | GR_analog-GR275B (071129) 275 Gamma-CCL (Pulse) Top Detector | 4.57 | 2.75 | 55.00 | |
| | | | Centralizers-8071-275-200 Tekco 2 3/4" Adjustable Centralizer | 2.73 | 2.75 | 25.00 | |
| | | | Bull_Plug-1_7/16_GO Titan 1 7/16" Female Bull Plug | 0.27 | 1.44 | 1.00 | |

Dataset: 1037116_occidental_brattain12-7ji_0512321541_20250623_scbl.db: field/well/run1/pass9.1
 Total length: 17.33 ft
 Total weight: 174.31 lb
 O.D.: 2.75 in

Log Variables

DatabaseD:\Bond Logs\1037116_OCCIDENTAL_BRATTAINL12-7JI_0512321541_20250623_SCE
 Dataset field/well/run1/pass9.1/_vars_

Top - Bottom

| | | | | | | | |
|----------------------|------------------------|-----------------------|------------------------|---------------------------|-----------------------|----------------------|------------------------|
| BOREID in 8.75 | BOTTEMP degF 100 | CASEOD in 4.5 | CASETHCK in 0.25 | CASEWGHT lb/ft 11.6 | MAXAMPL mV 81.2 | MINAMPL mV 0.7 | MINATTN db/ft 13 |
| PERFS No | PPT usec 249 | SRFTEMP degF 60 | TDEPTH ft 5000 | | | | |

Variable Description

BOREID : Borehole I.D.
 BOTTEMP : Bottom Hole Temperature
 CASEOD : Casing O.D.
 CASETHCK : Casing Thickness

CASEWGHT : Casing Weight
 MAXAMPL : Maximum Amplitude
 MINAMPL : Minimum Amplitude
 MINATTN : Minimum Attenuation

PERFS : Perforation Flag
 PPT : Predicted Pipe Time
 SRFTEMP : Surface Temperature
 TDEPTH : Total Depth

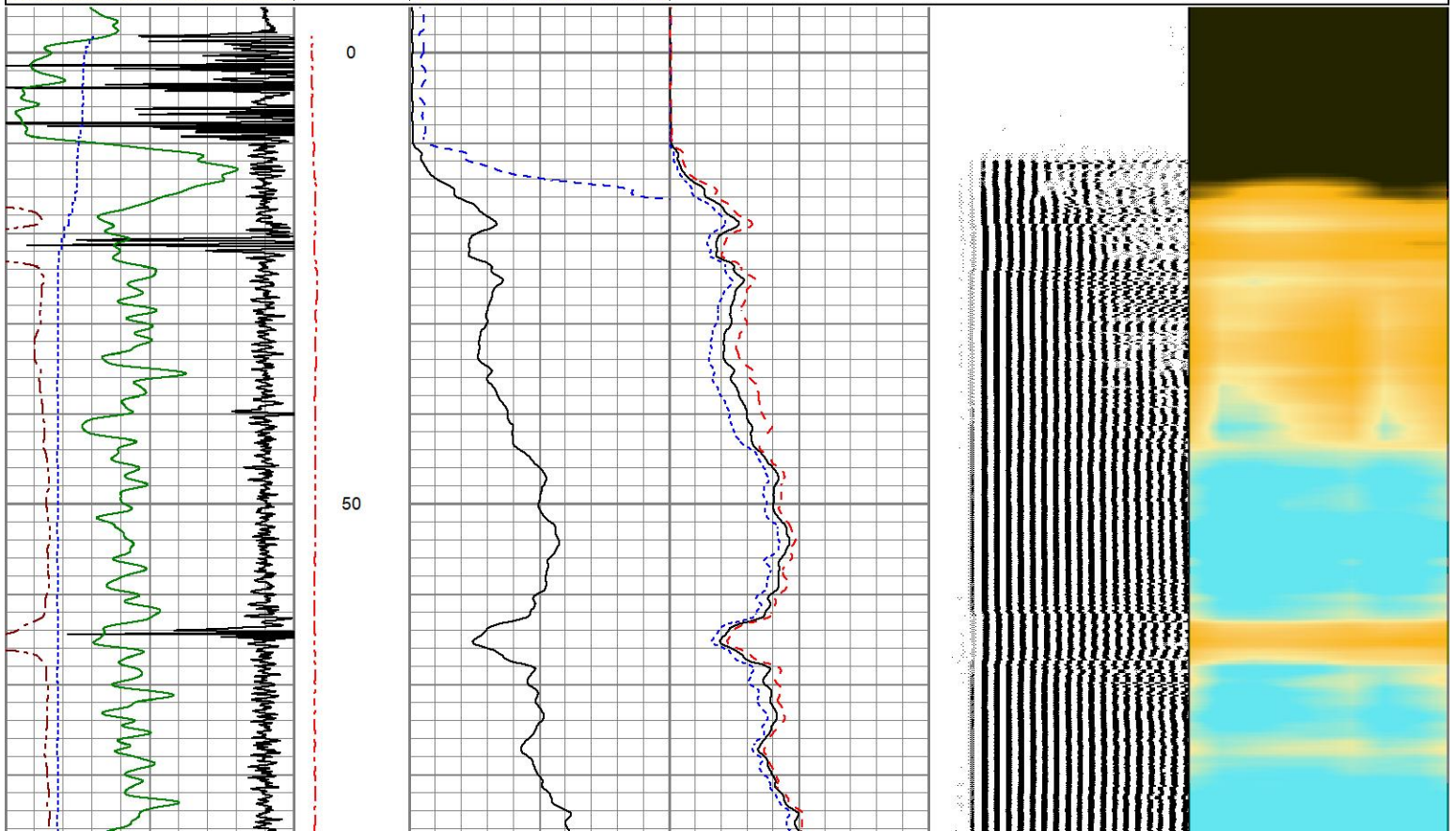


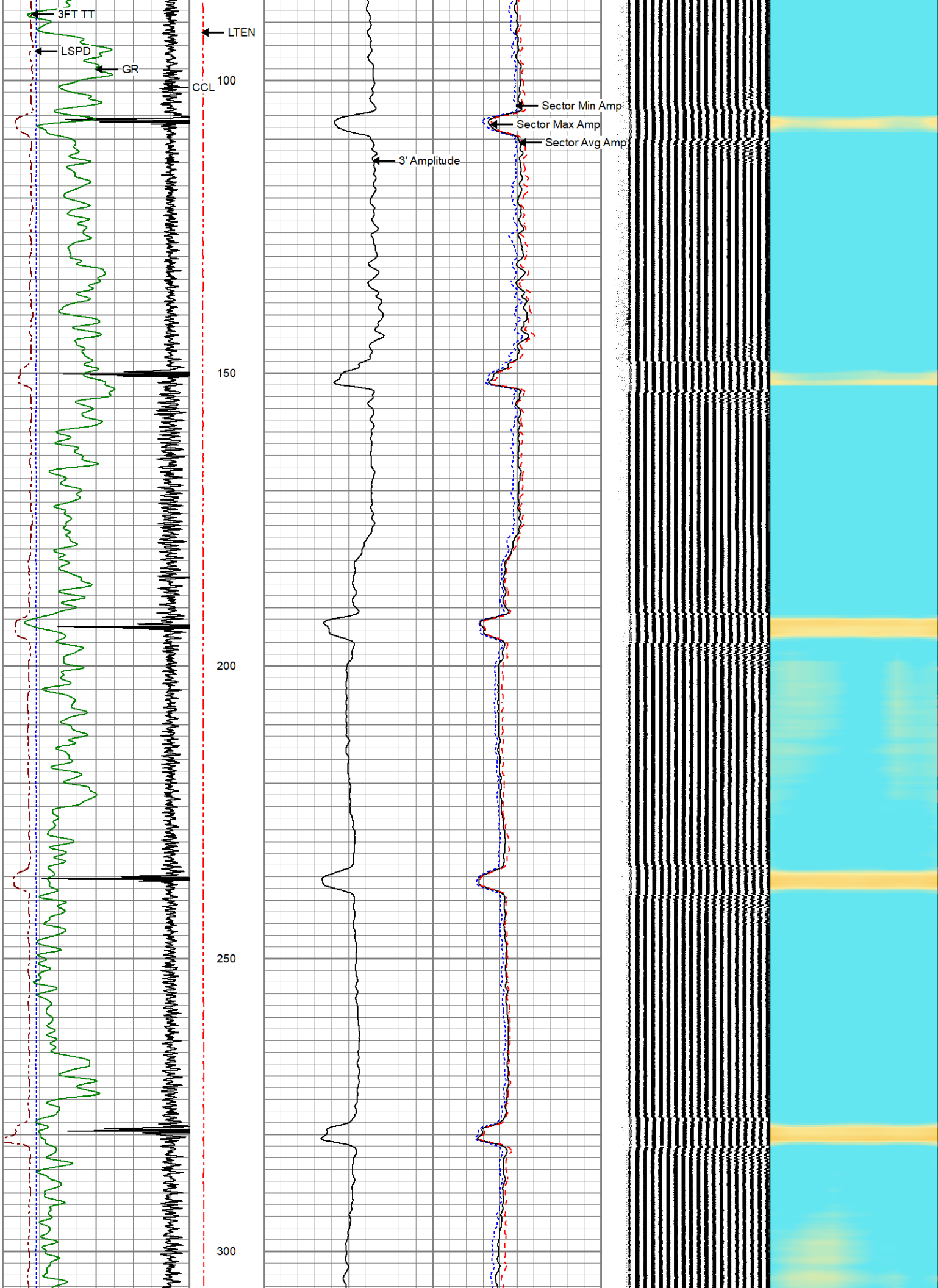
MAIN PASS

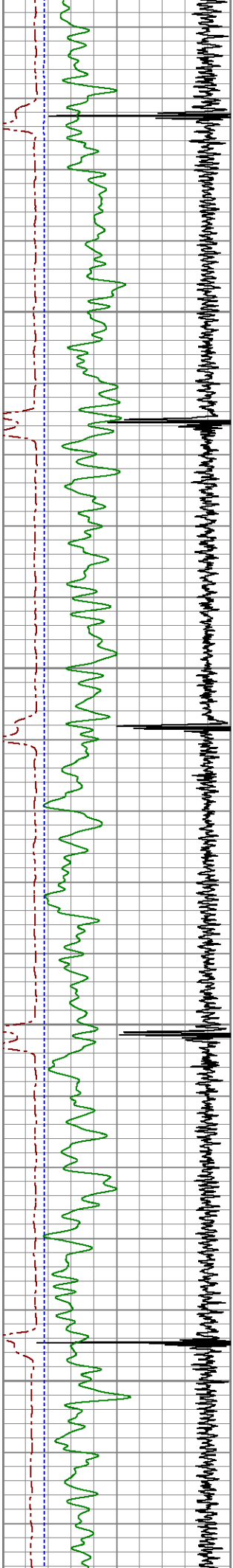
0 PSI APPLIED AT SURFACE

Database File d:\bond logs\1037116_occidental_brattainl12-7ji_0512321541_20250623_scb\1037116_occidental_brattainl12-7ji_0512321541_20250623_scb
 Dataset Pathname pass9.1
 Presentation Format res_scb\8sec-gr-ccl
 Dataset Creation Mon Jun 23 09:27:47 2025
 Charted by Depth in Feet scaled 1:240

| | | | | | | | | | | | | | | | |
|------|---------------|-----|----------|---|----------------------------|-----|---|----------------|-----|-----|------------|------|---|------------|---|
| 260 | 3FT TT (usec) | 160 | LTEN | 0 | 3' Amplitude (mV) | 100 | 0 | Sector Min Amp | 150 | 200 | VDL (usec) | 1200 | 1 | Sector Map | 8 |
| -9 | CCL | 1 | (lb)2000 | 0 | 3' Amplified Amplitude X 5 | 20 | 0 | Sector Avg Amp | 150 | | | | | | |
| 0 | GR (GAPI) | 150 | | 0 | (mV) | | 0 | Sector Max Amp | 150 | | | | | | |
| -150 | LSPD (ft/min) | 150 | | | | | | | | | | | | | |





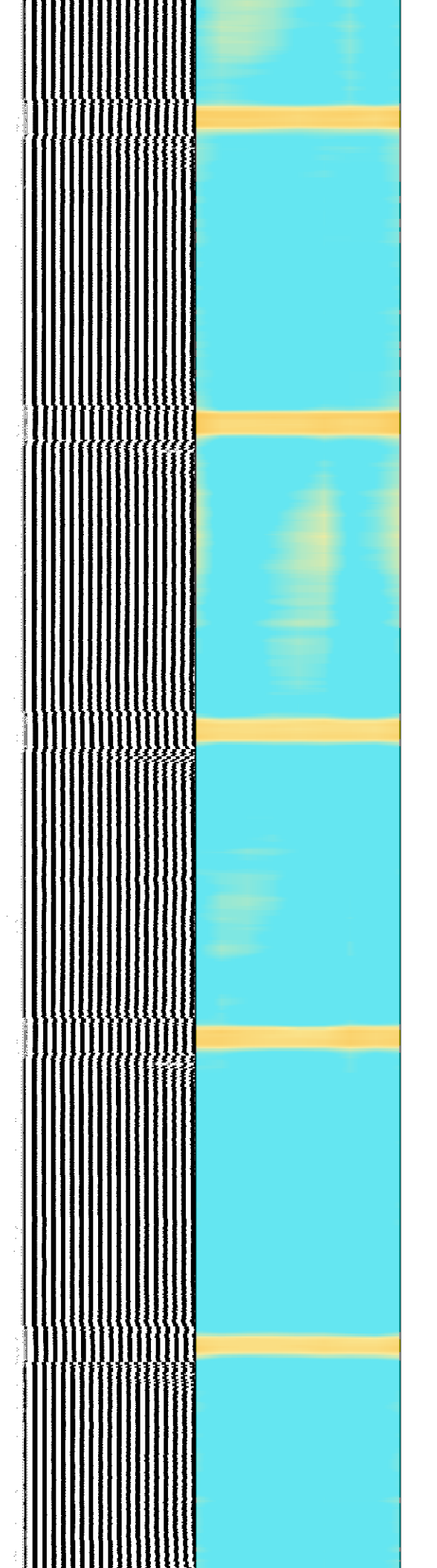
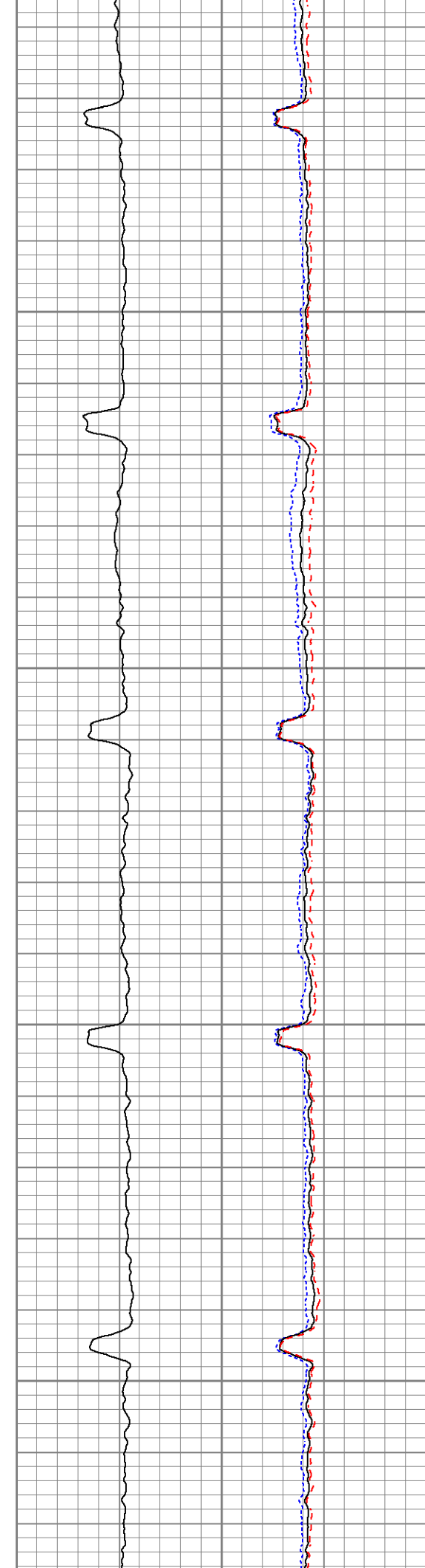


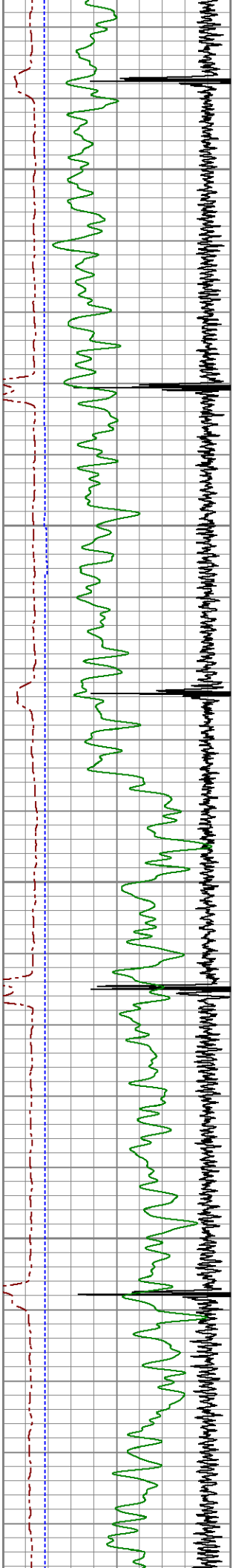
350

400

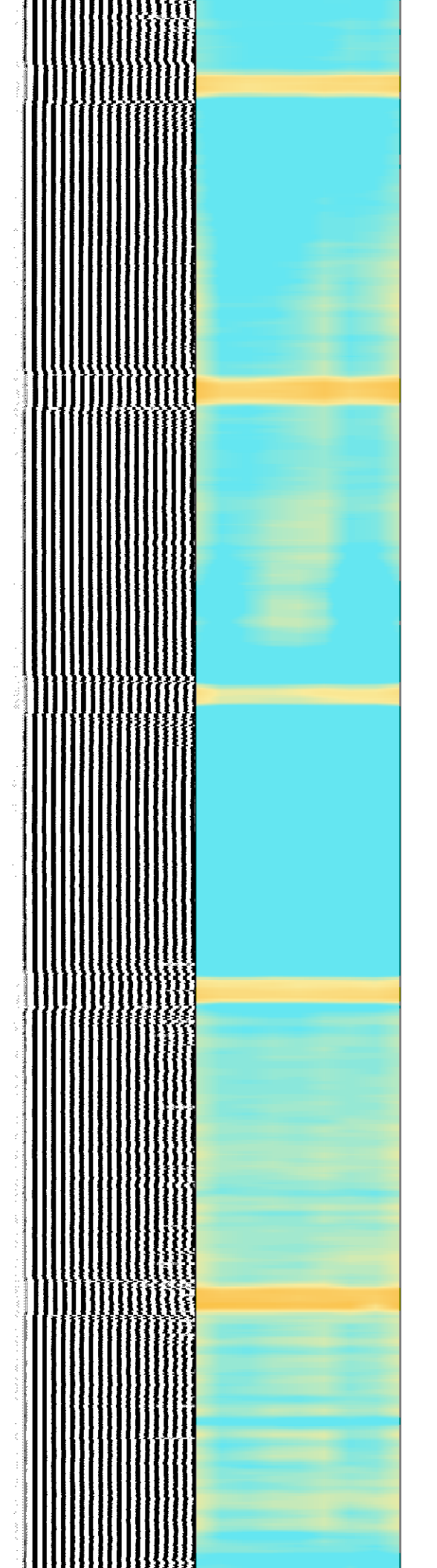
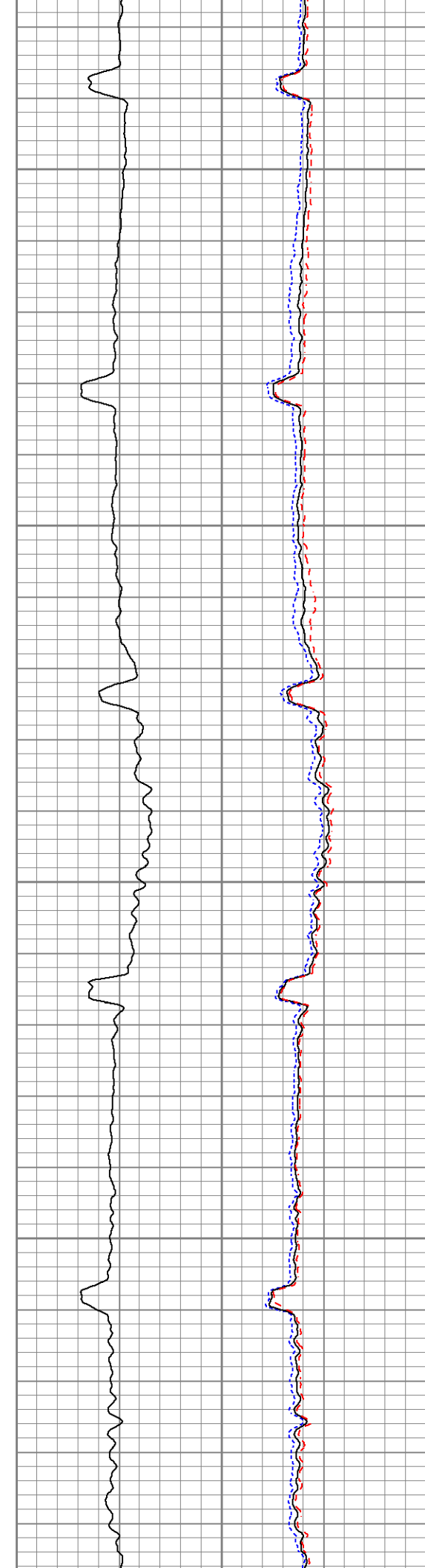
450

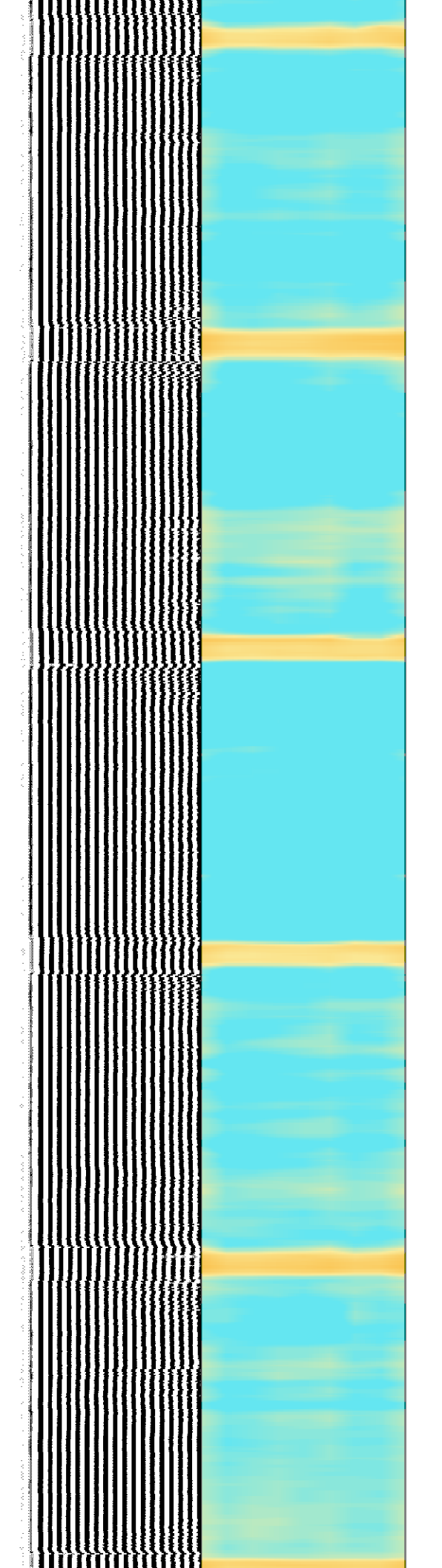
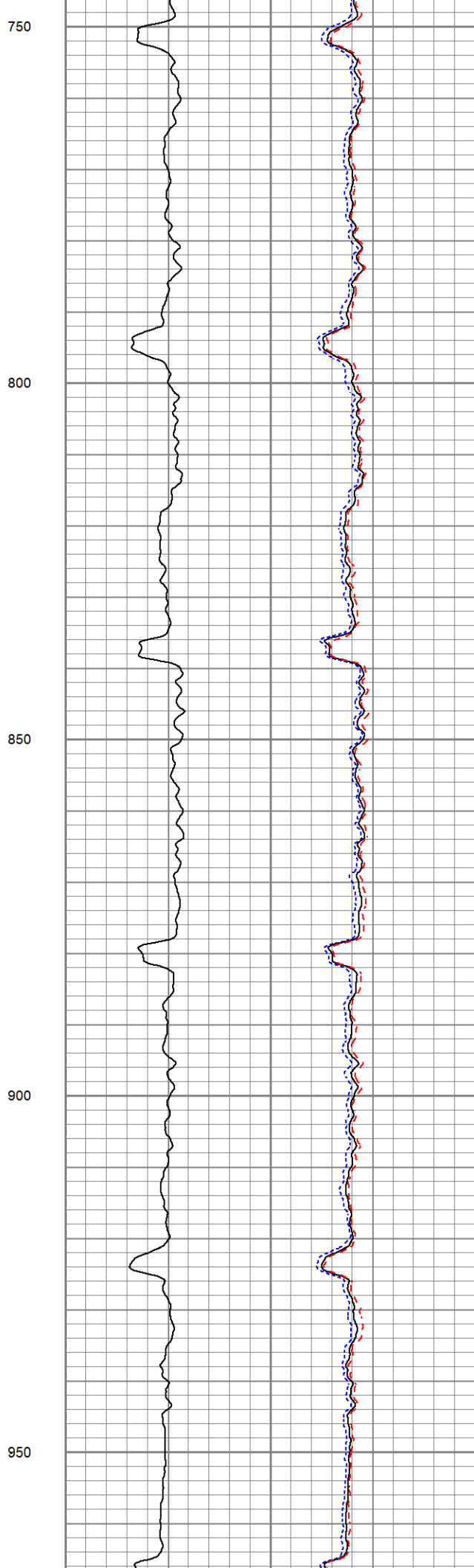
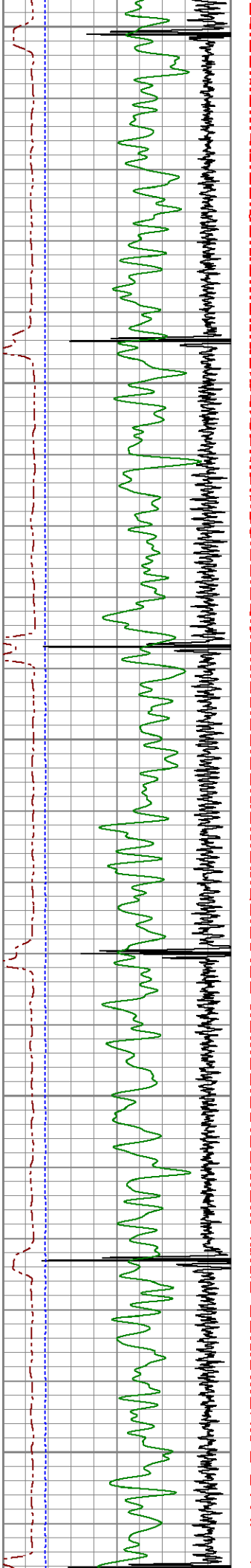
500

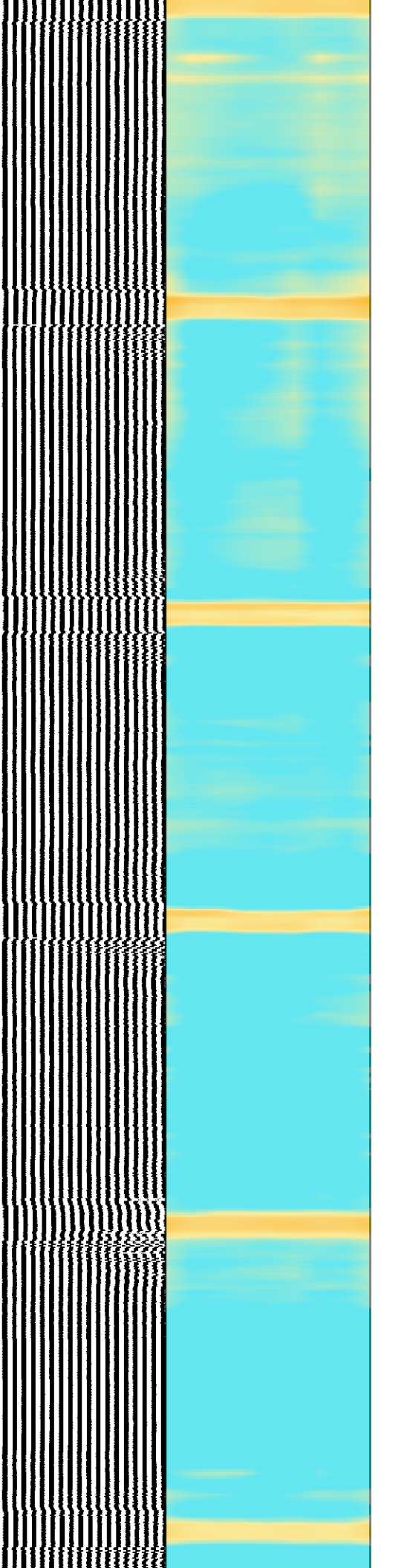
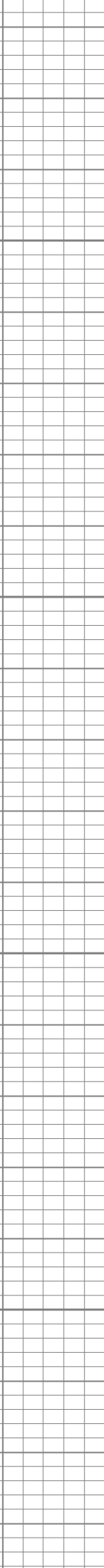
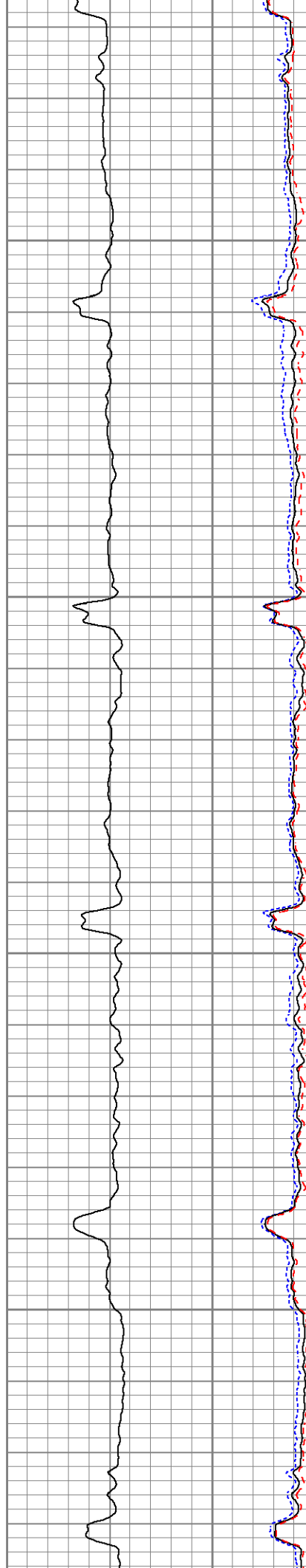
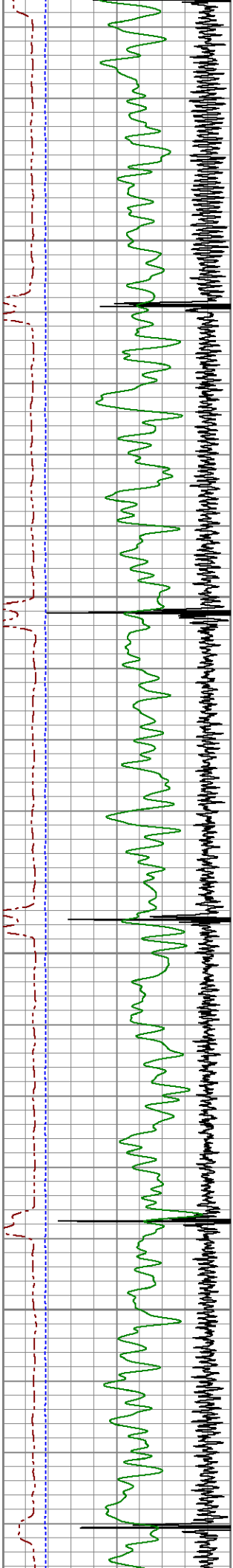


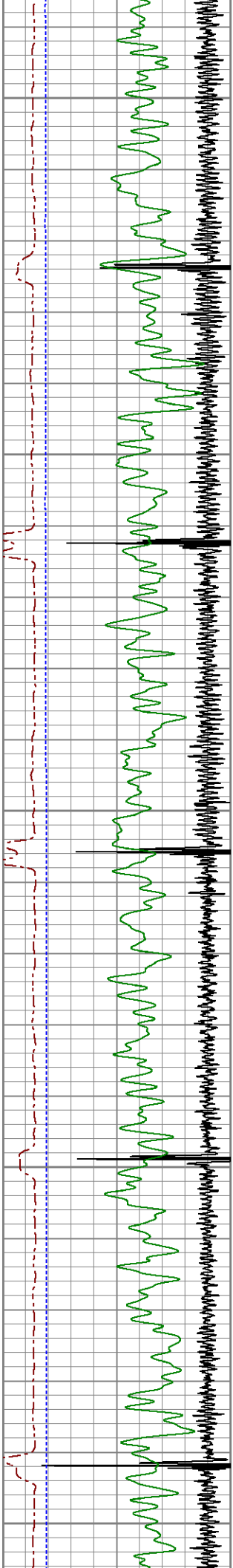


550
600
650
700

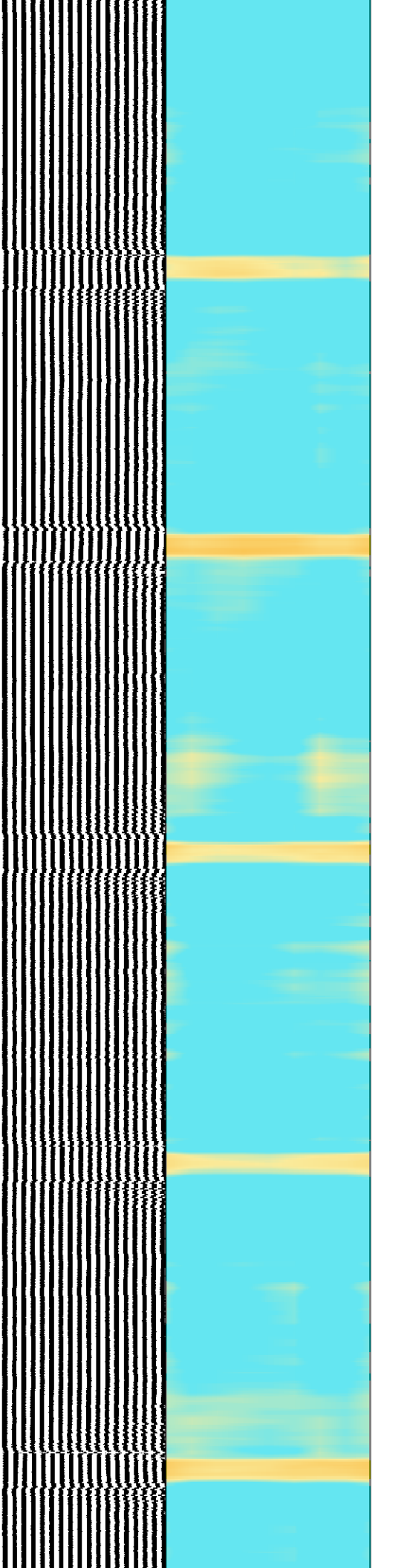
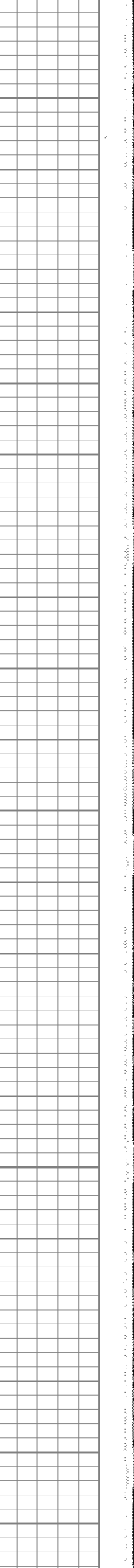
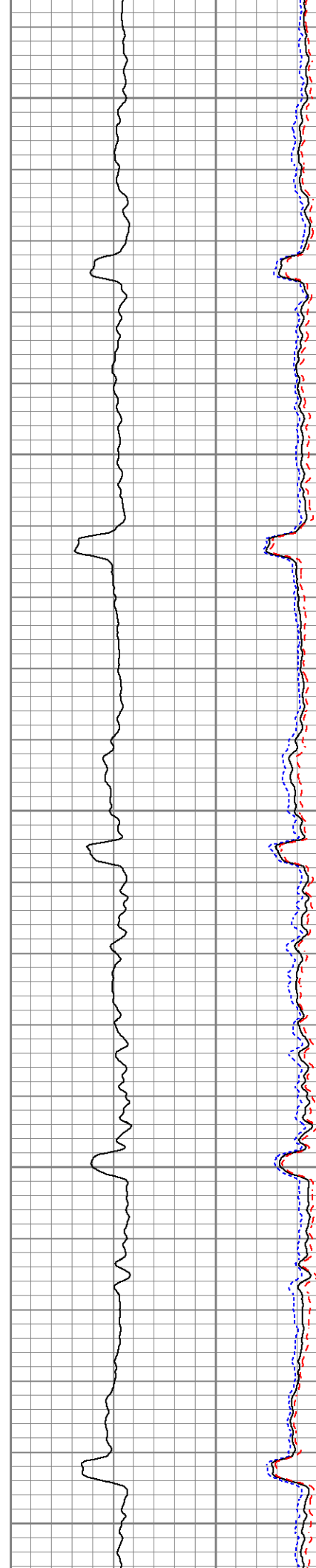


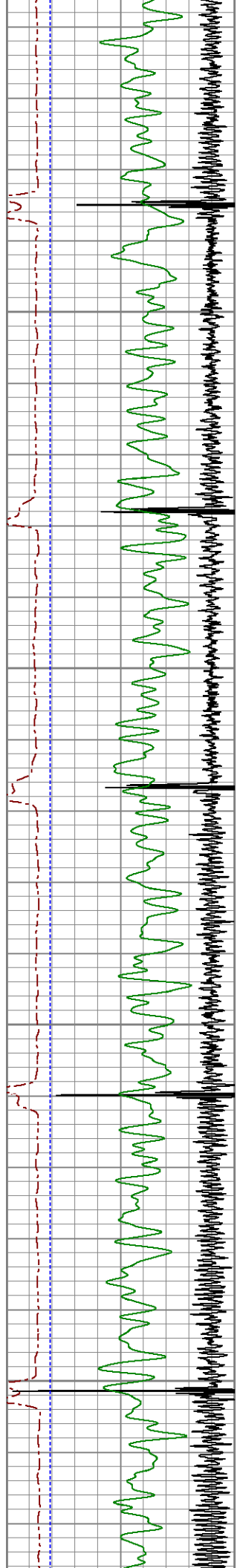






1200
1250
1300
1350
1400



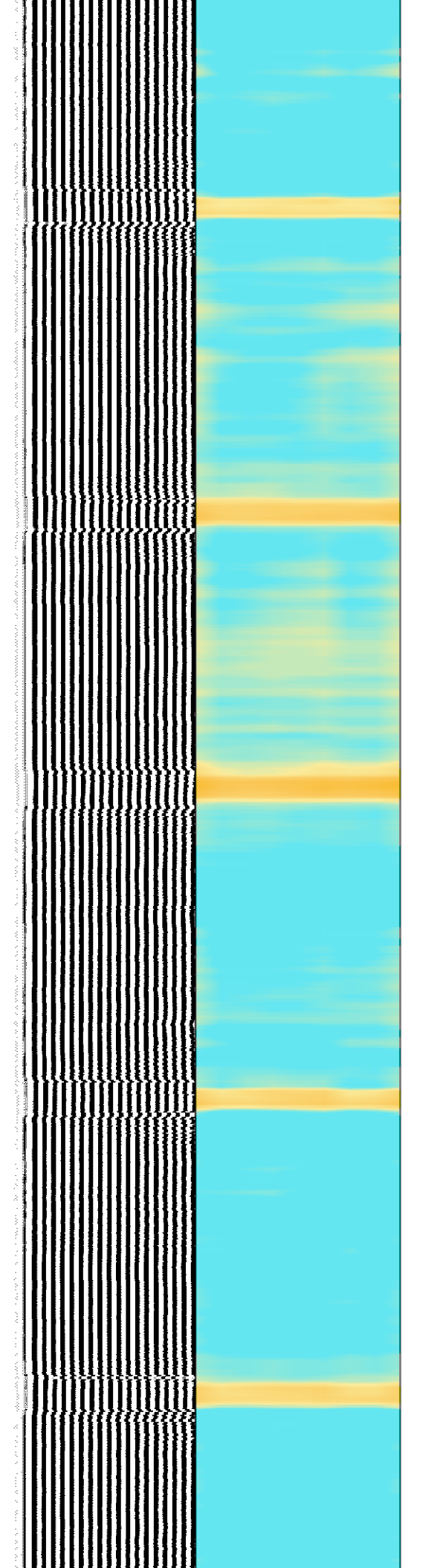
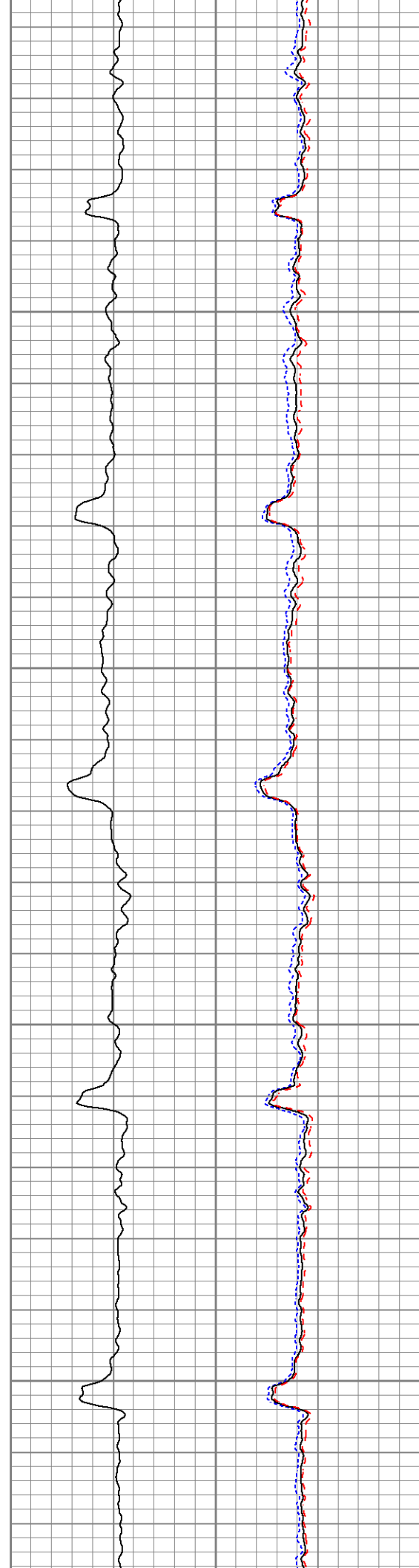


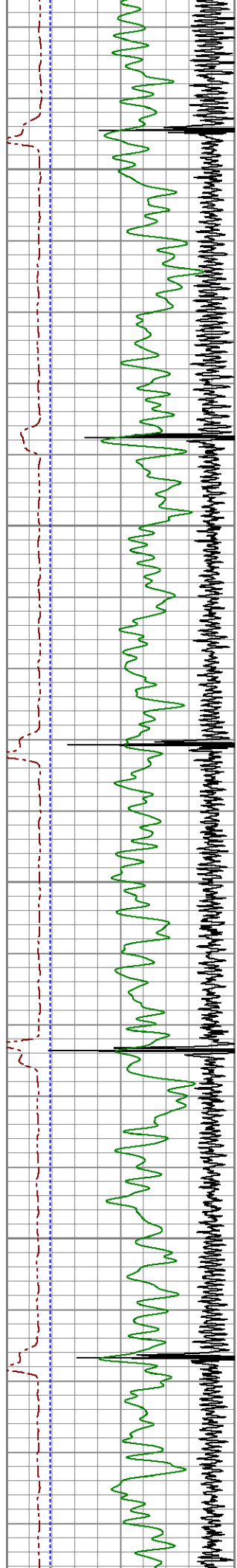
1450

1500

1550

1600

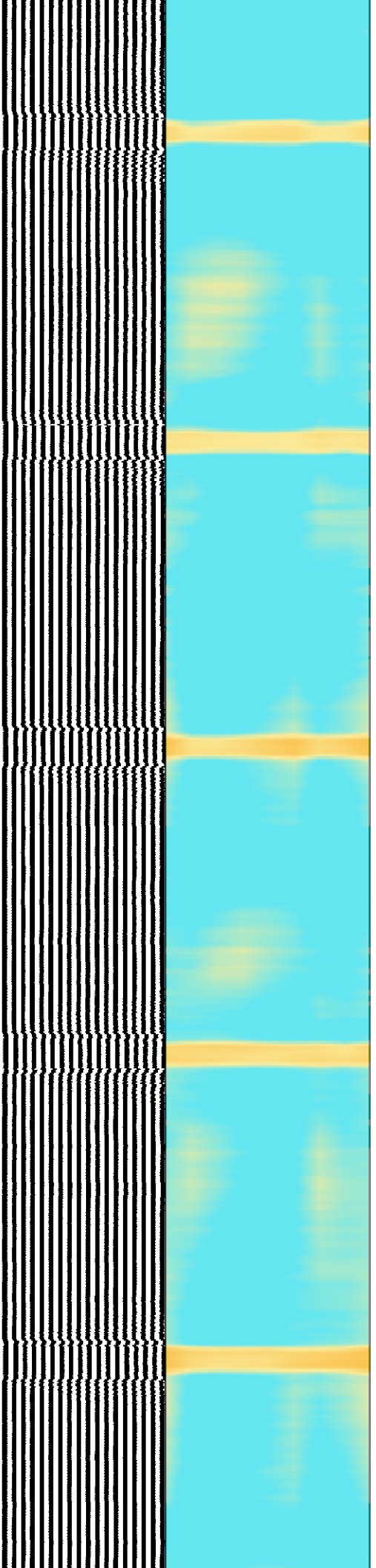


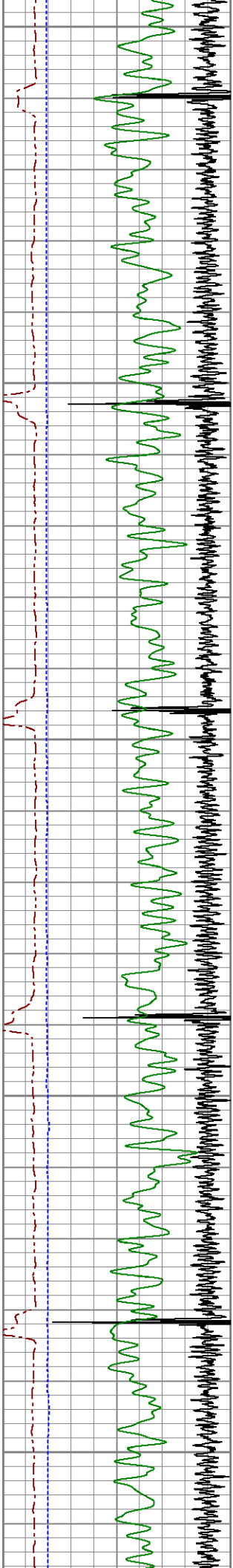


1650
1700
1750
1800

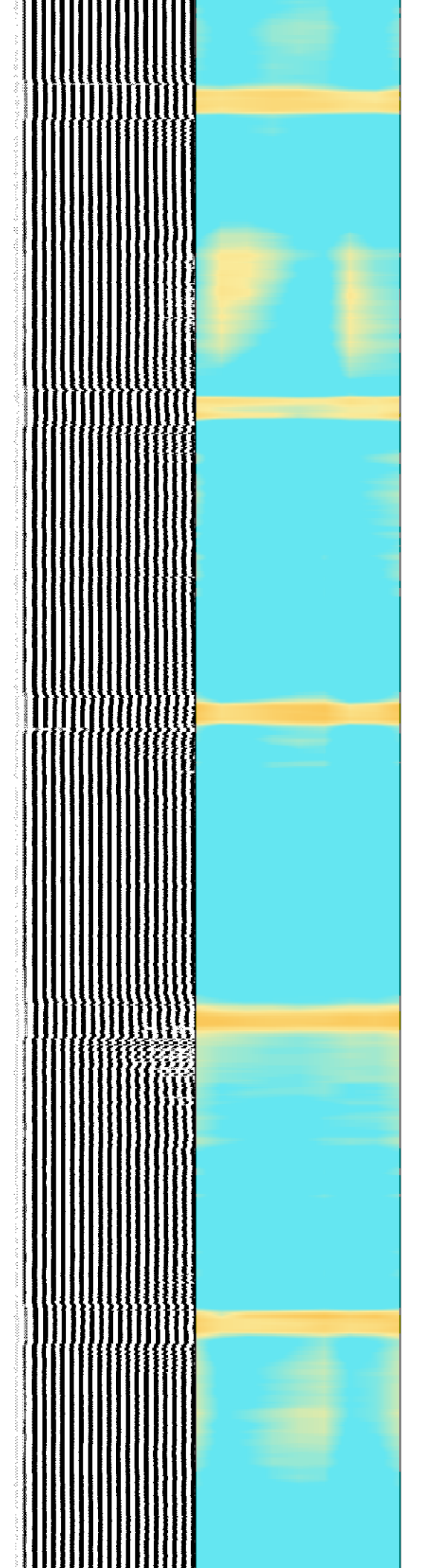
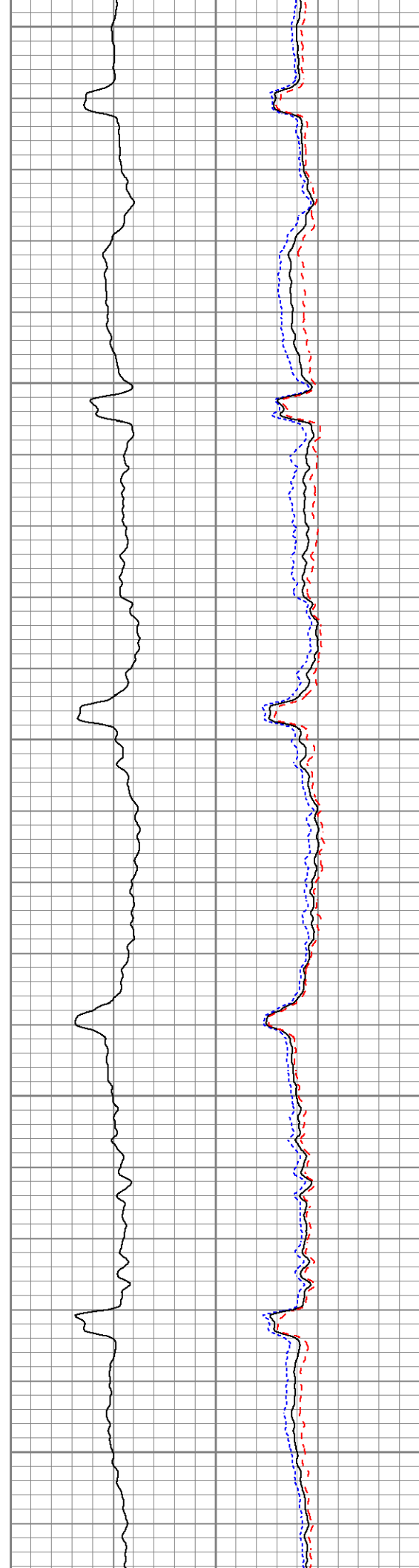


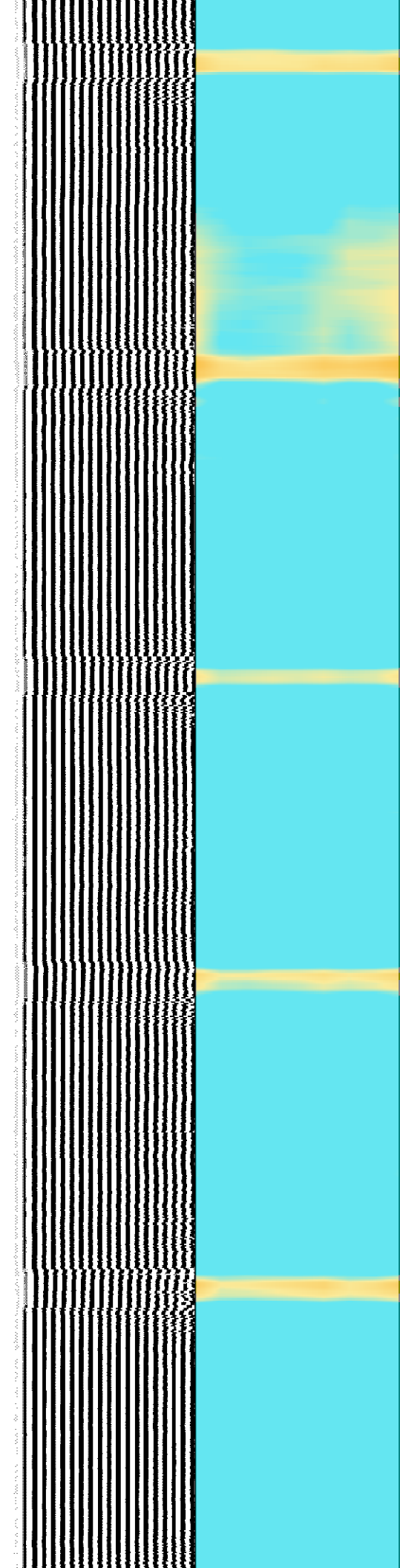
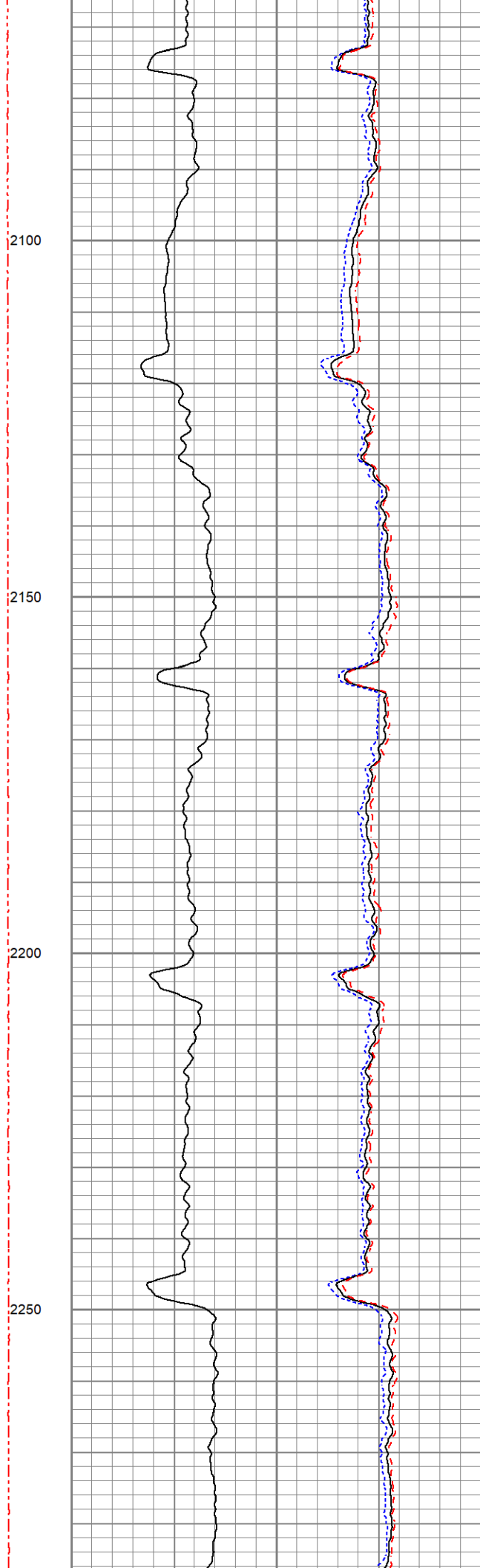
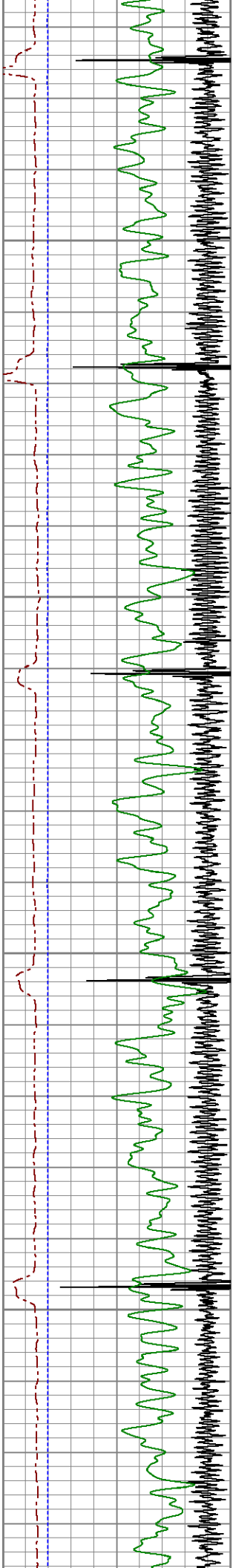
1650
1700
1750
1800

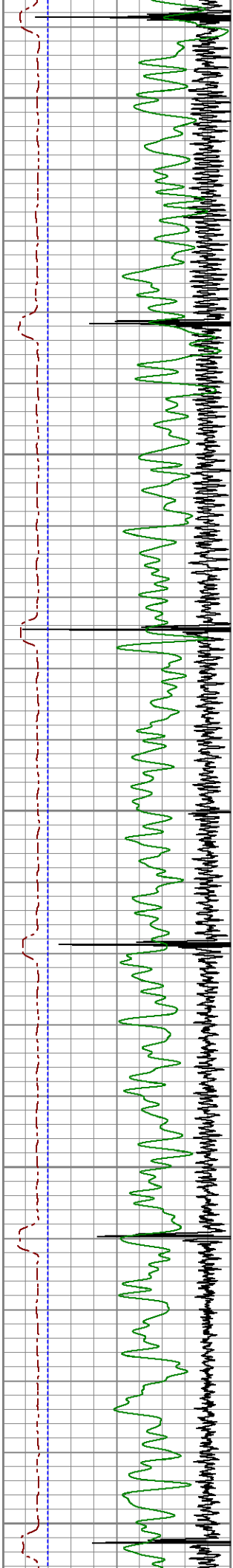




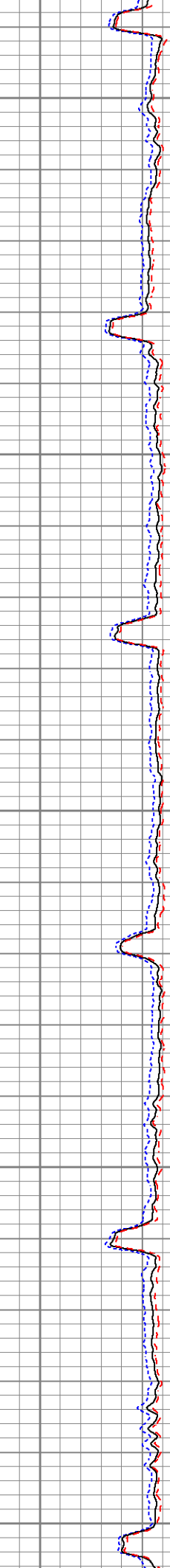
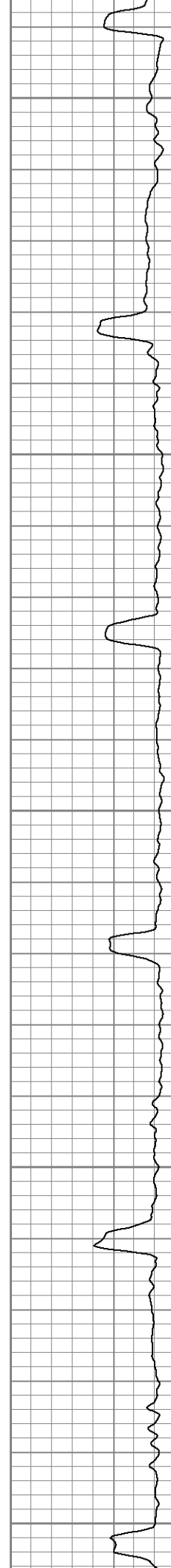
1850
1900
1950
2000
2050



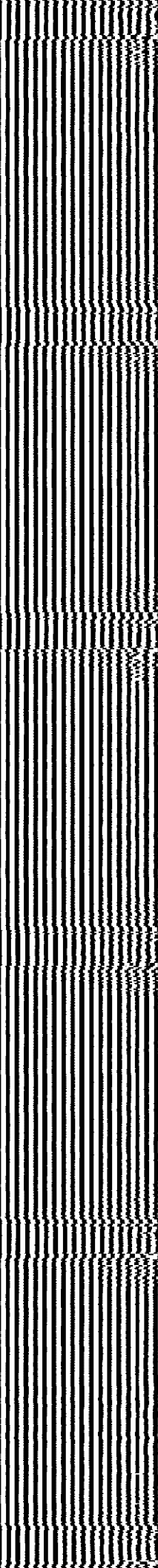


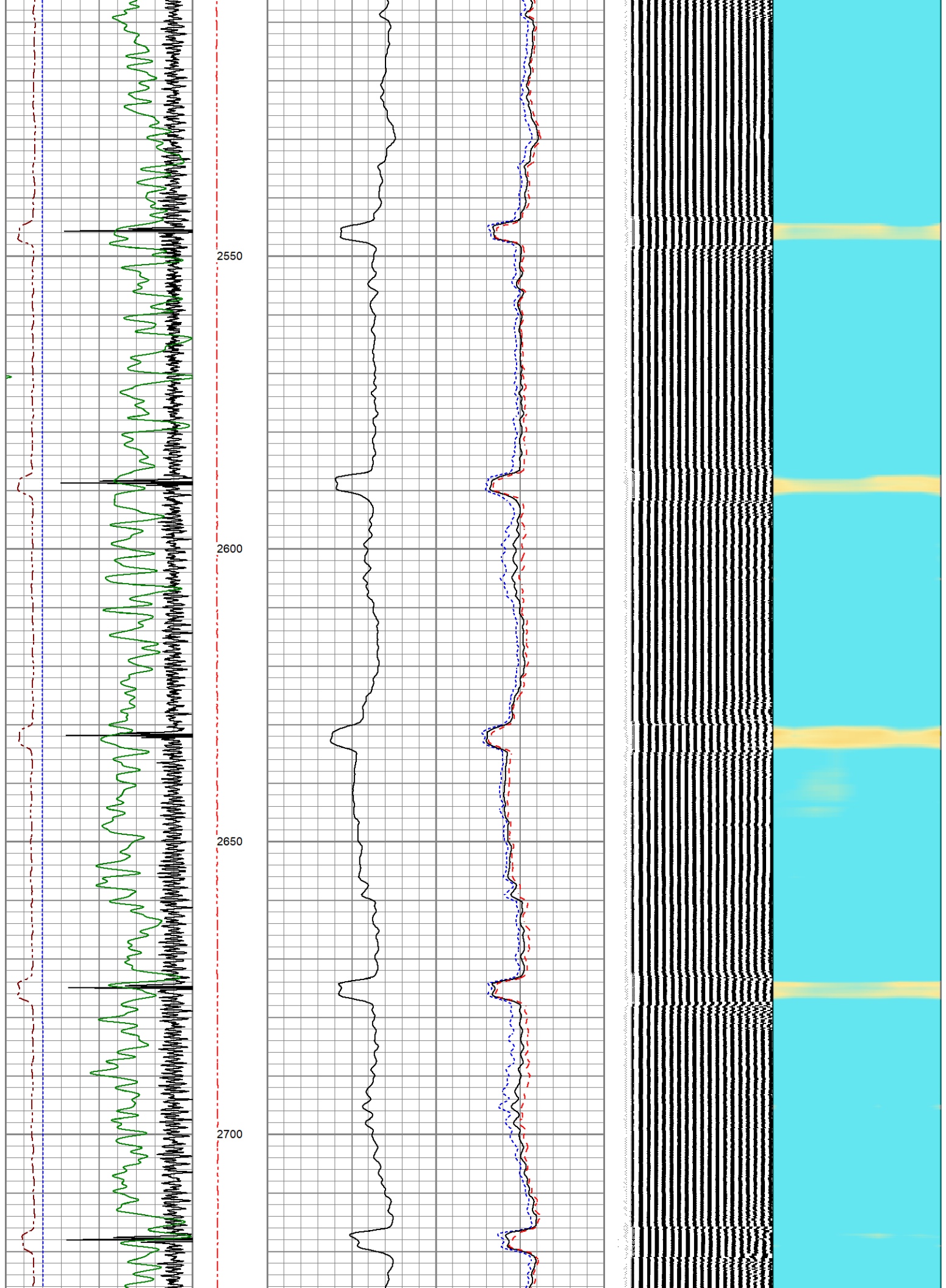


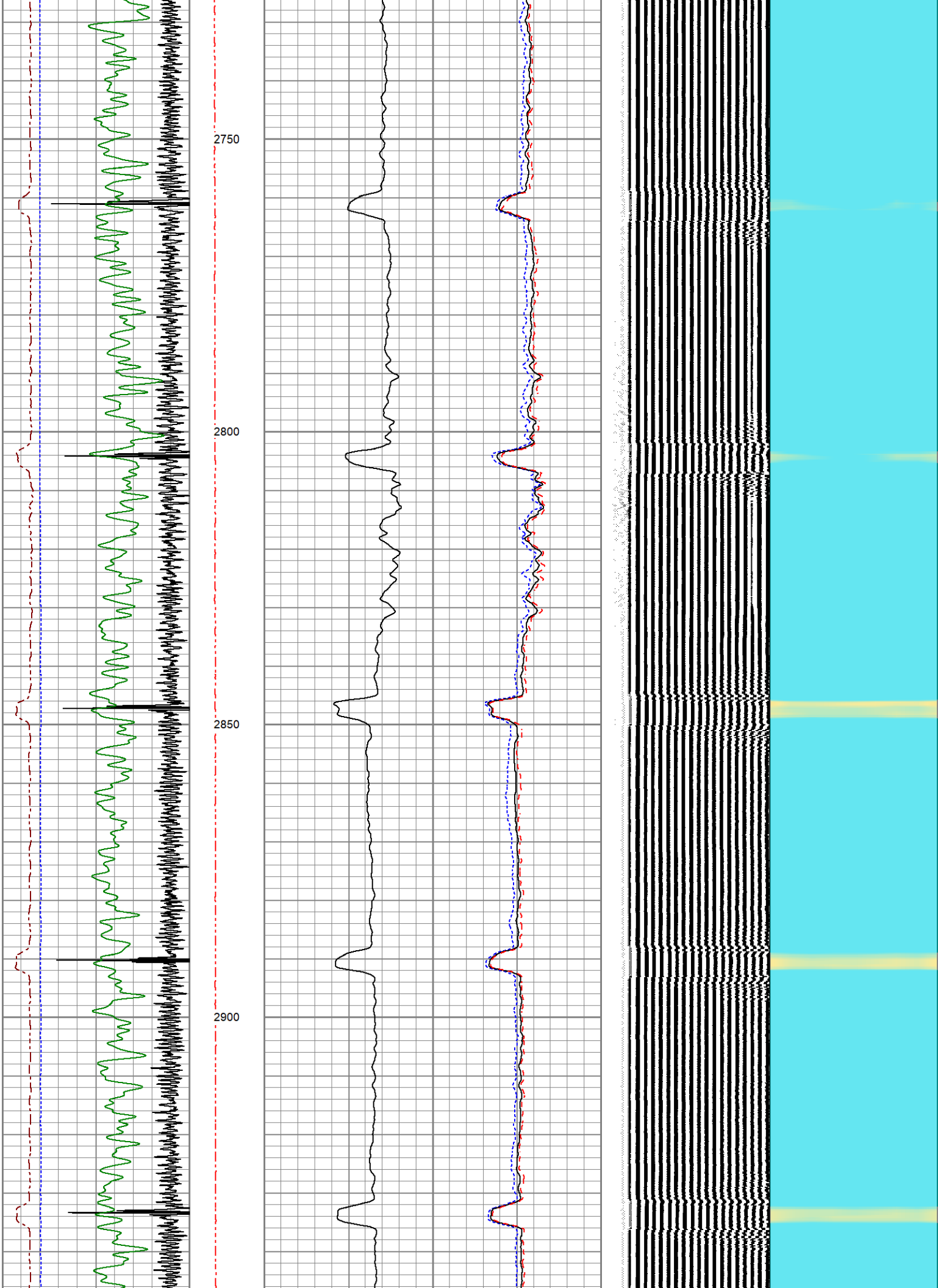
2300
2350
2400
2450
2500

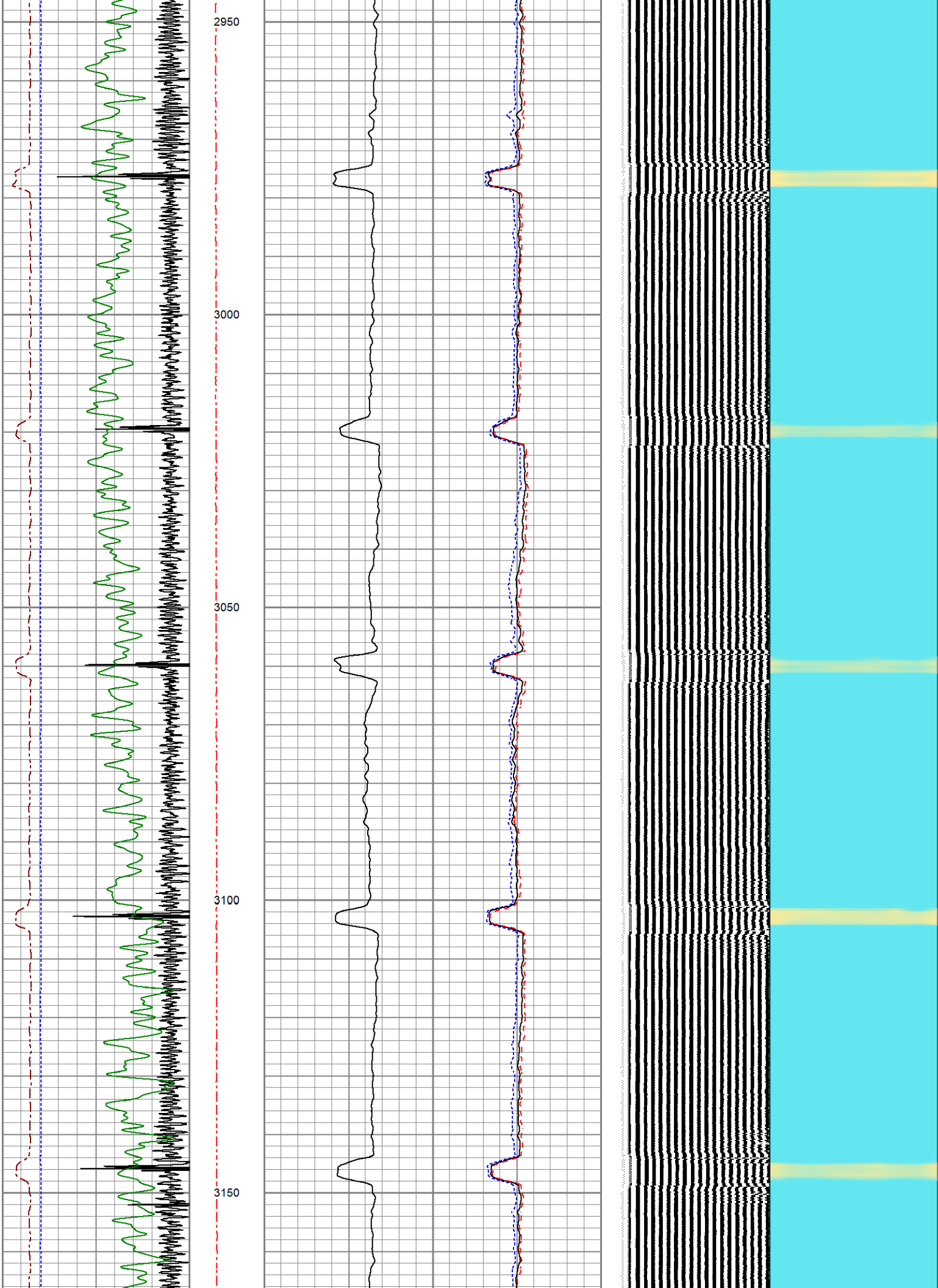


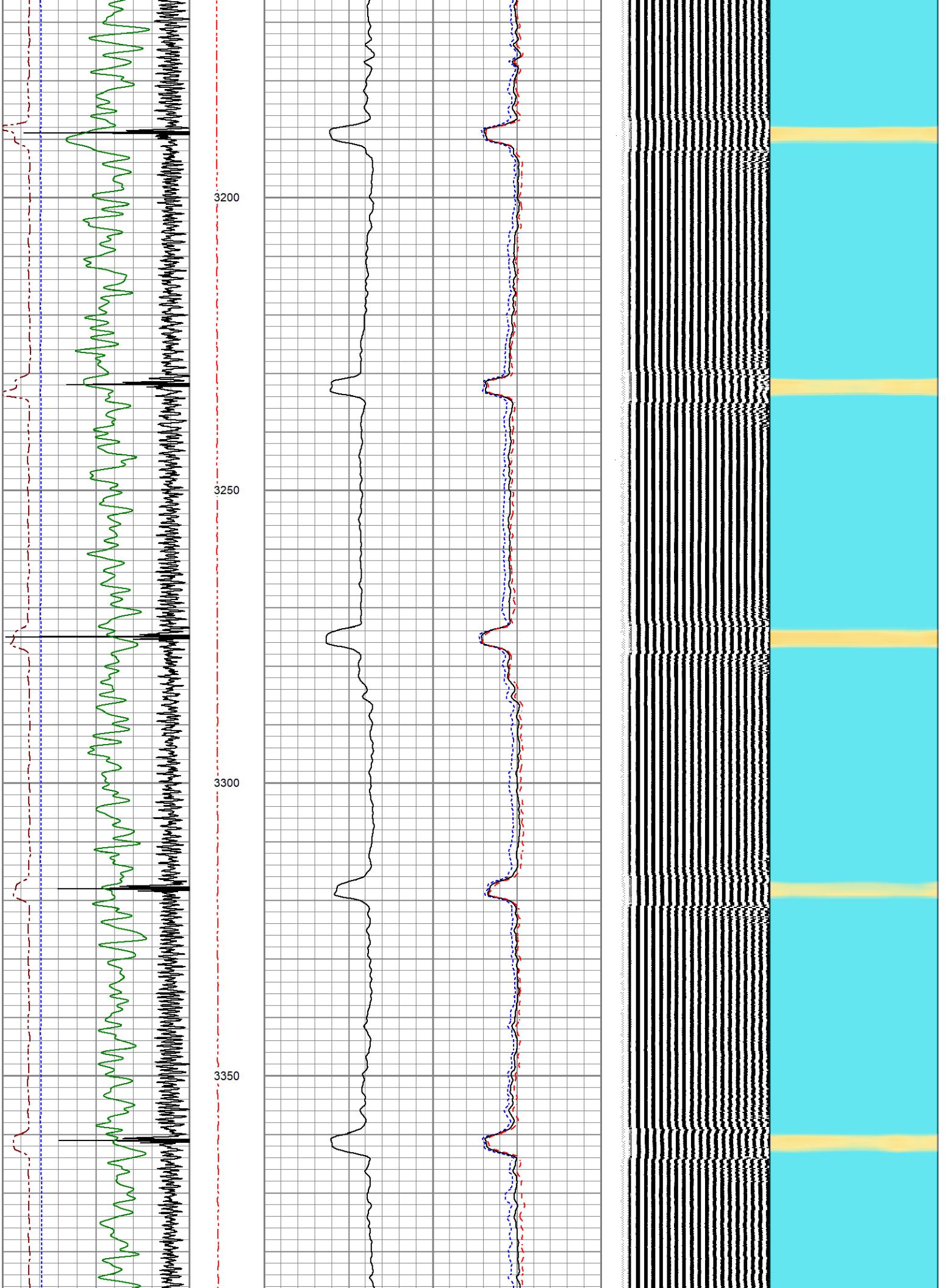
2300
2350
2400
2450
2500

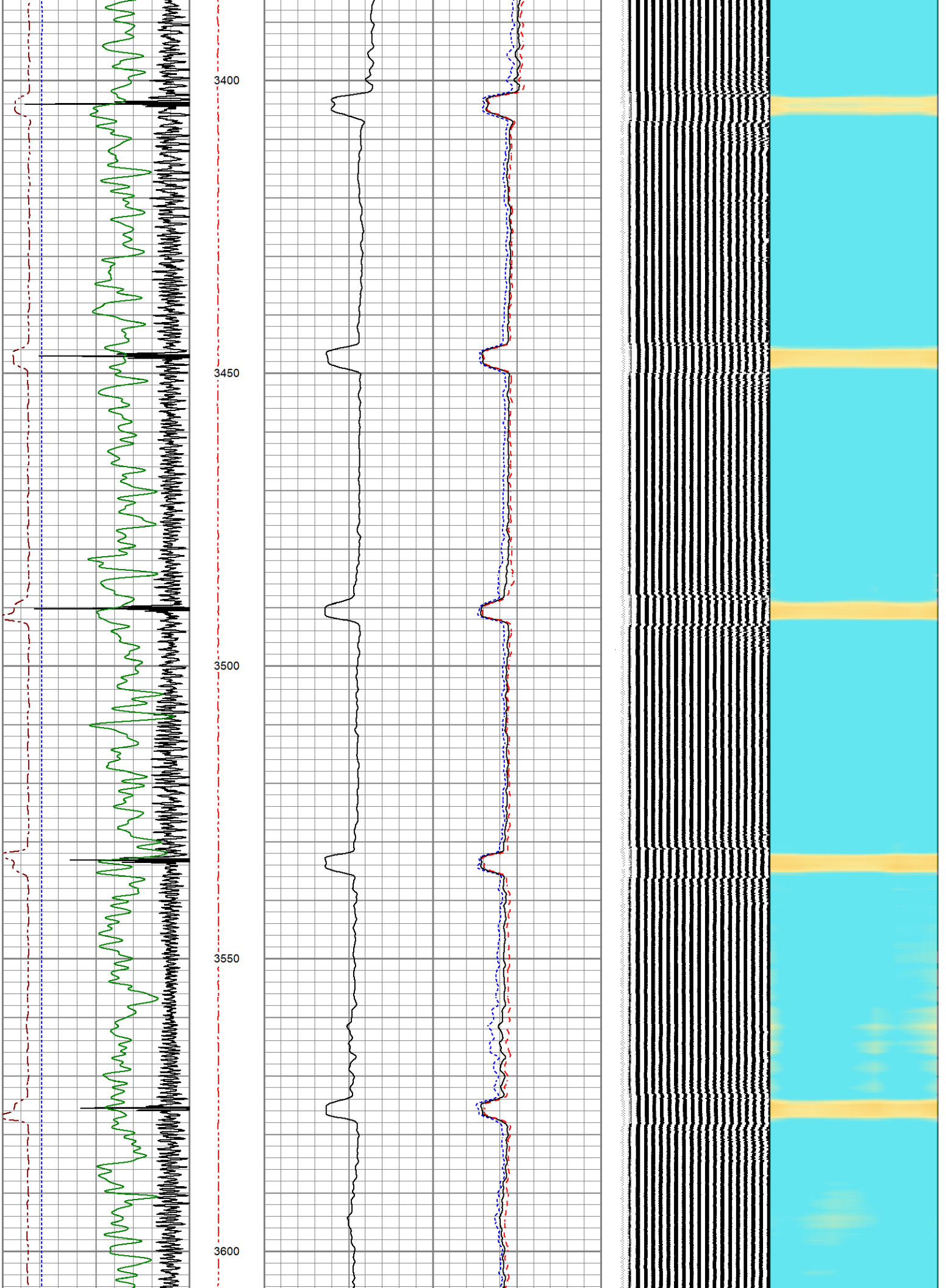


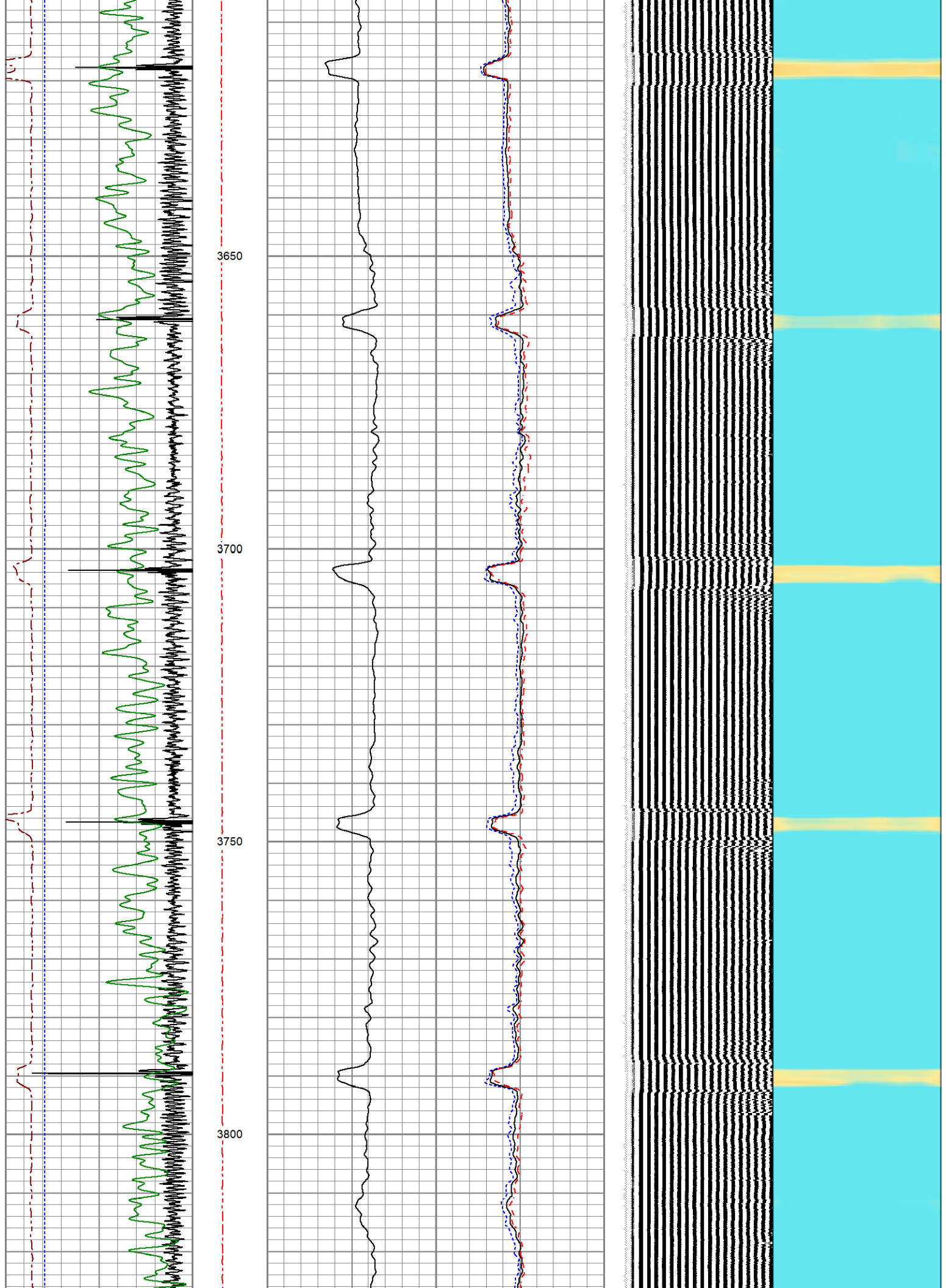


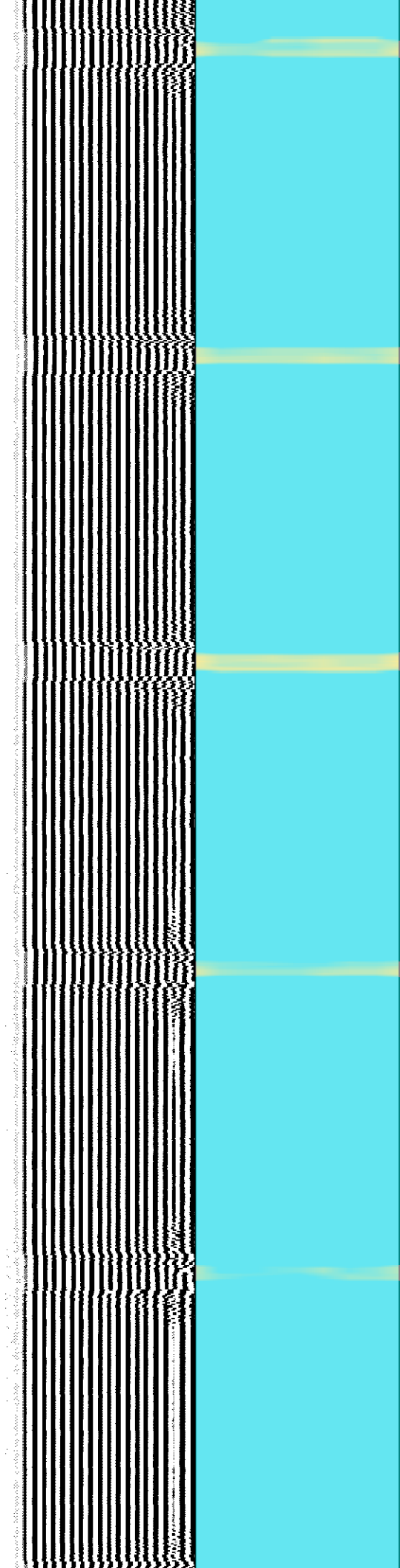
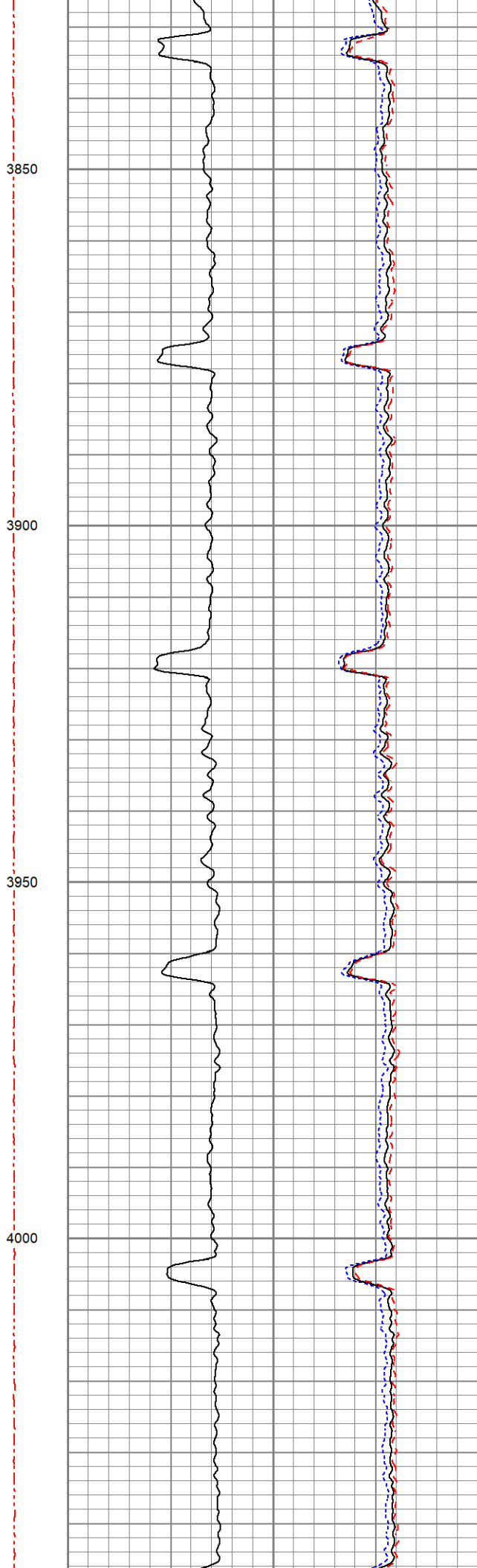
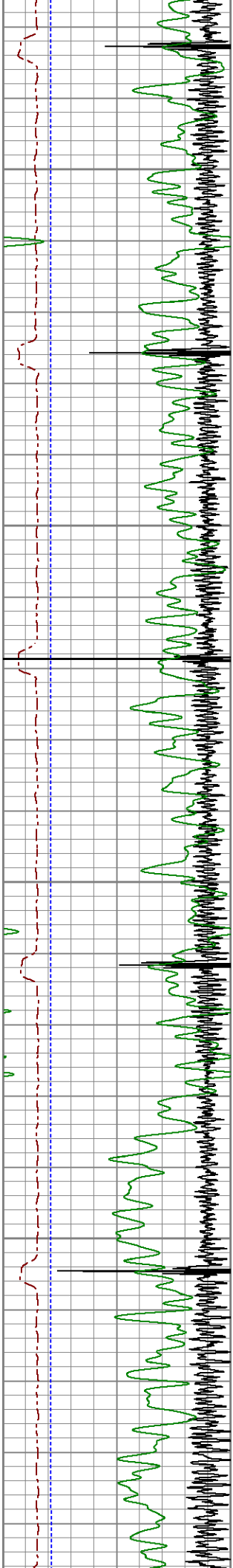


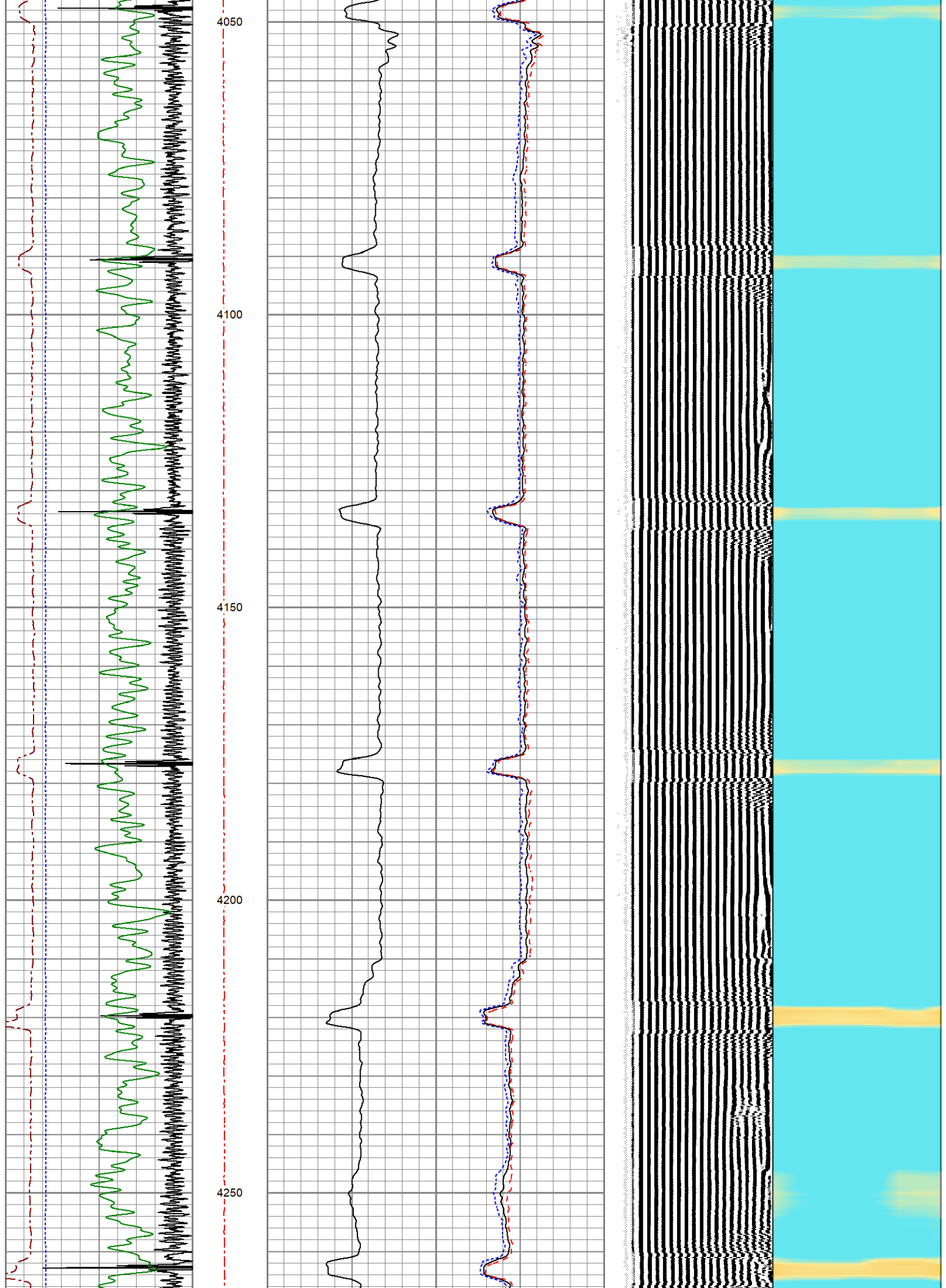


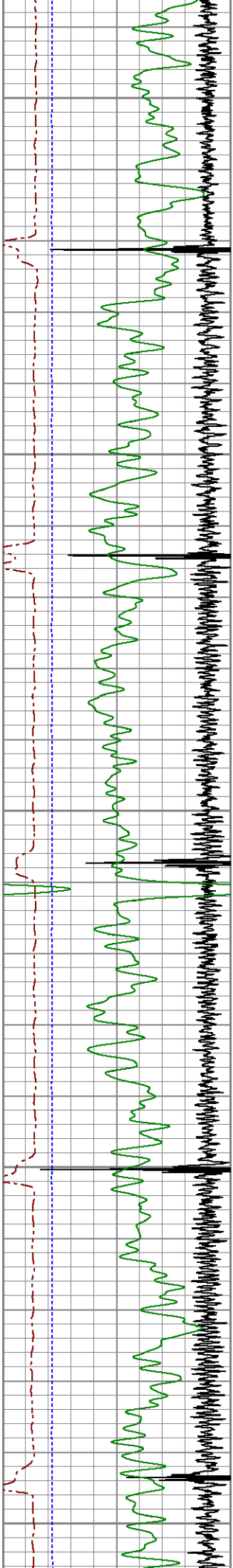












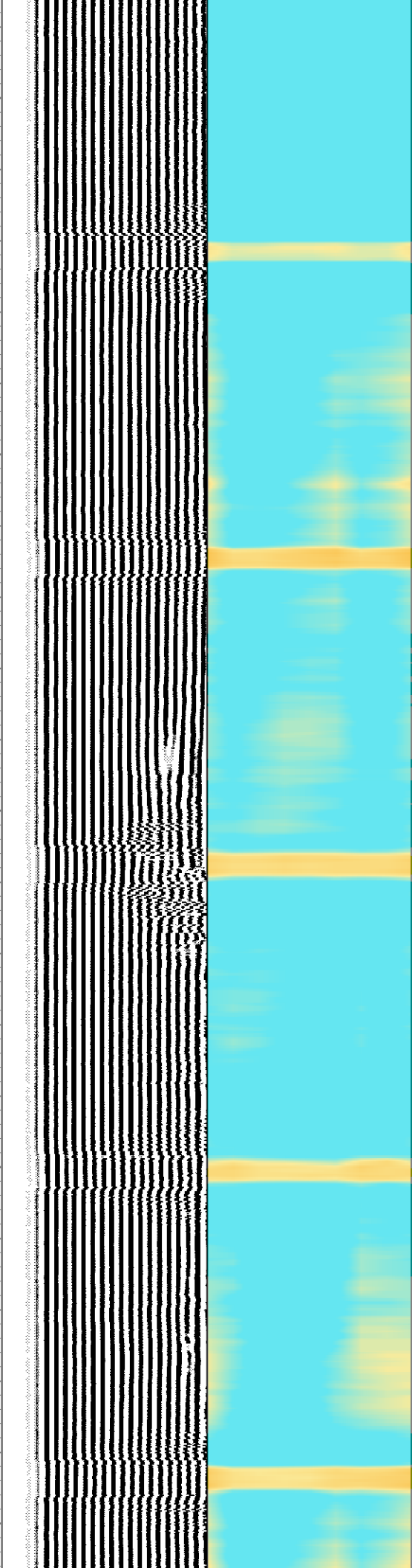
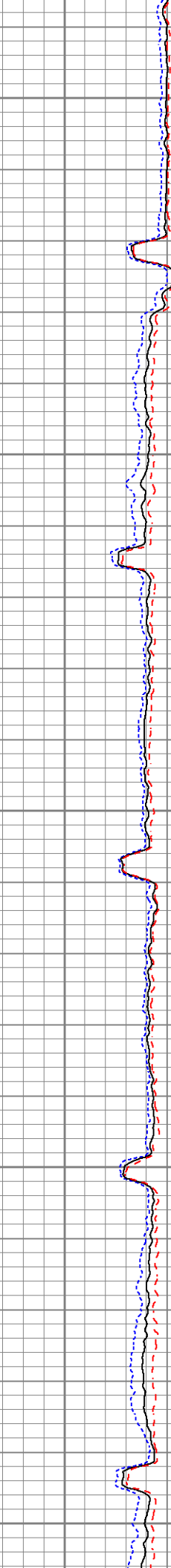
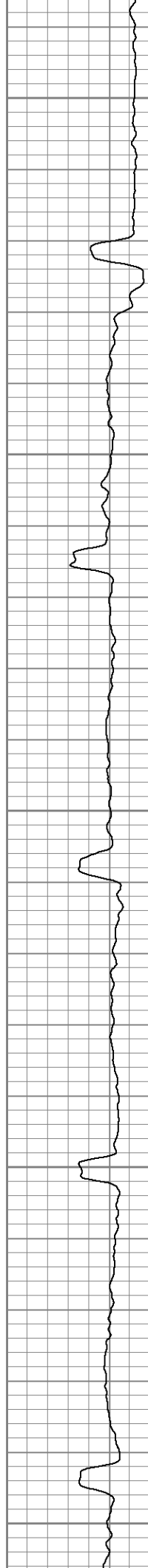
4500

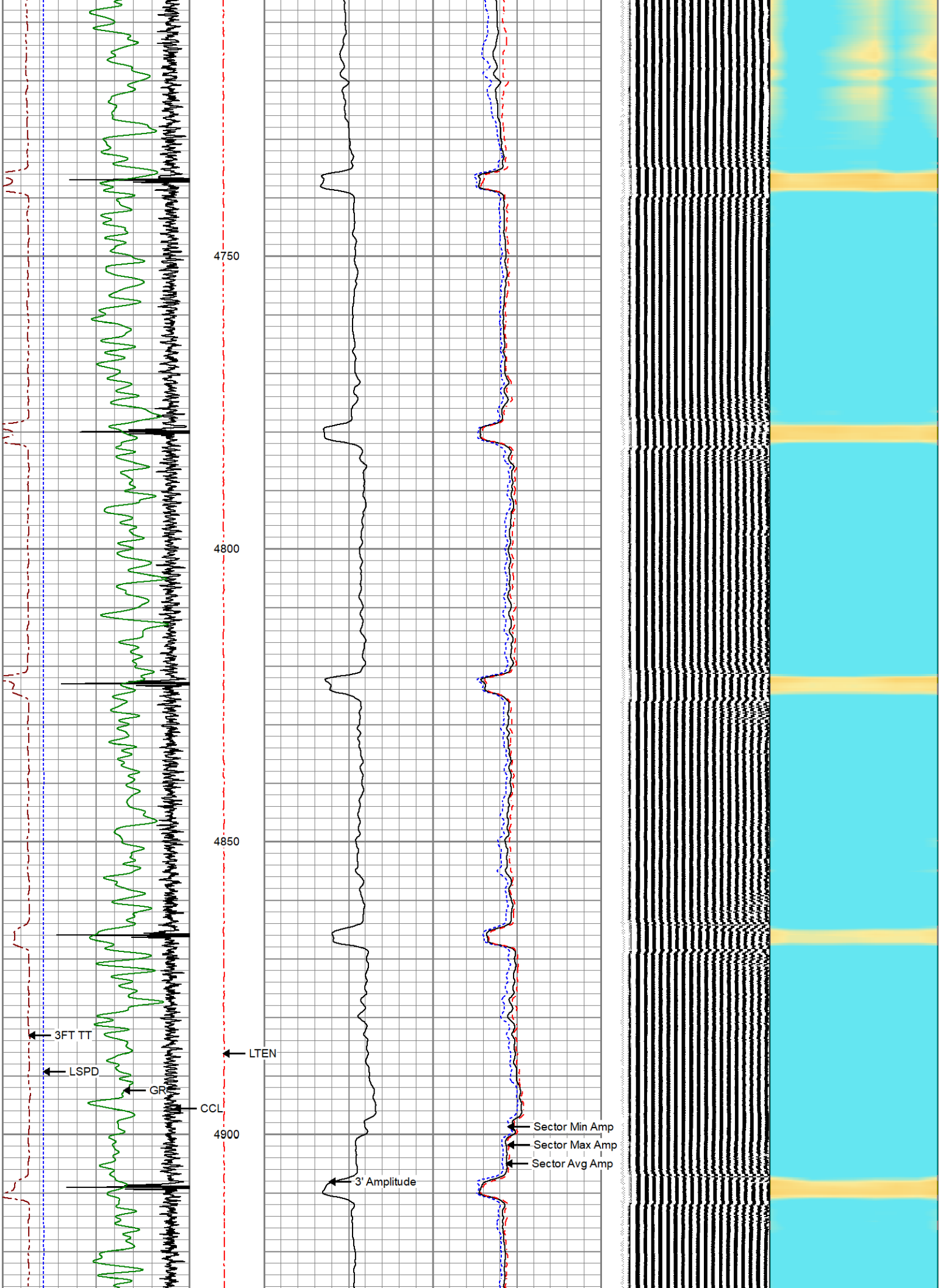
4550

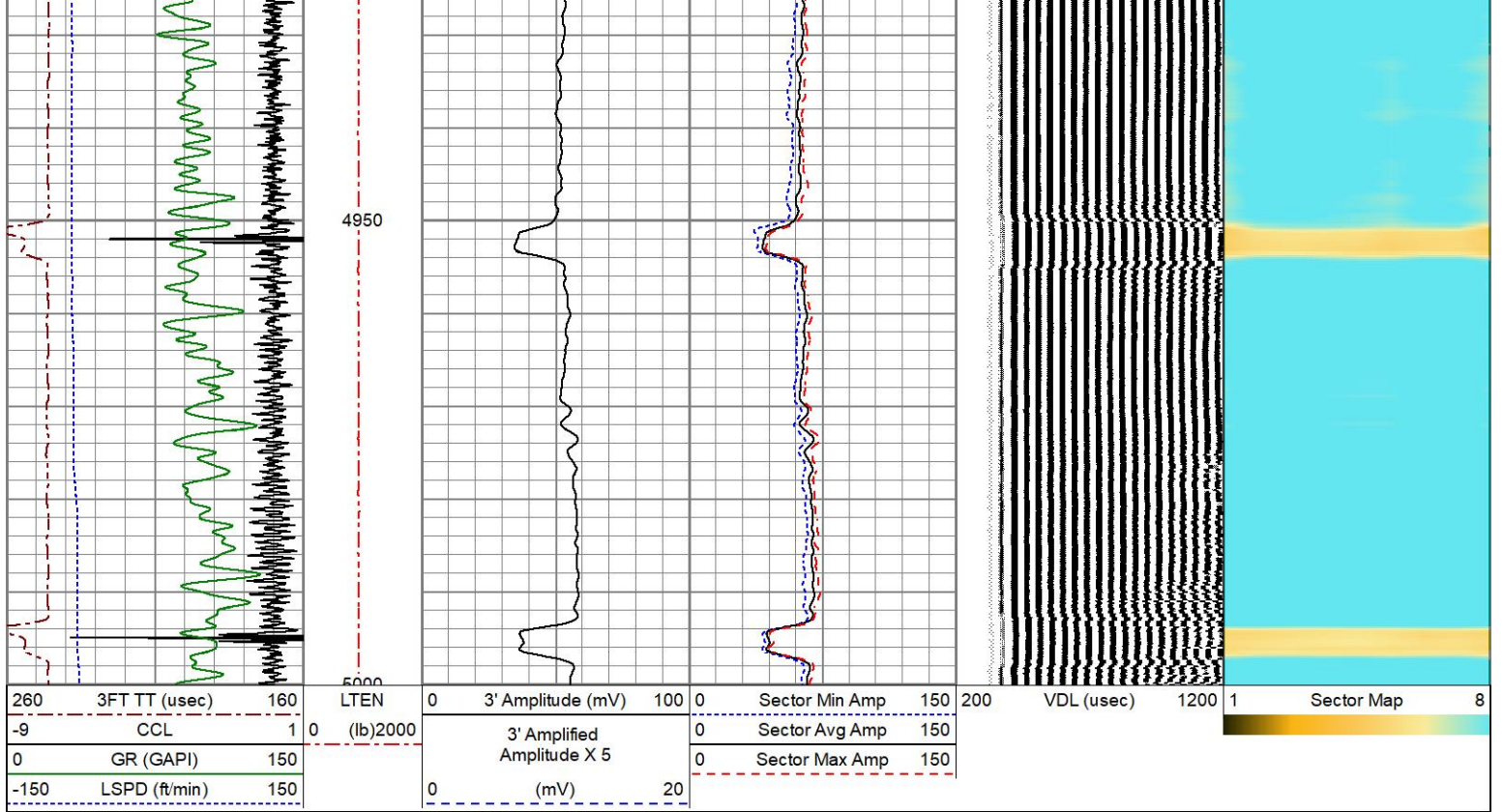
4600

4650

4700



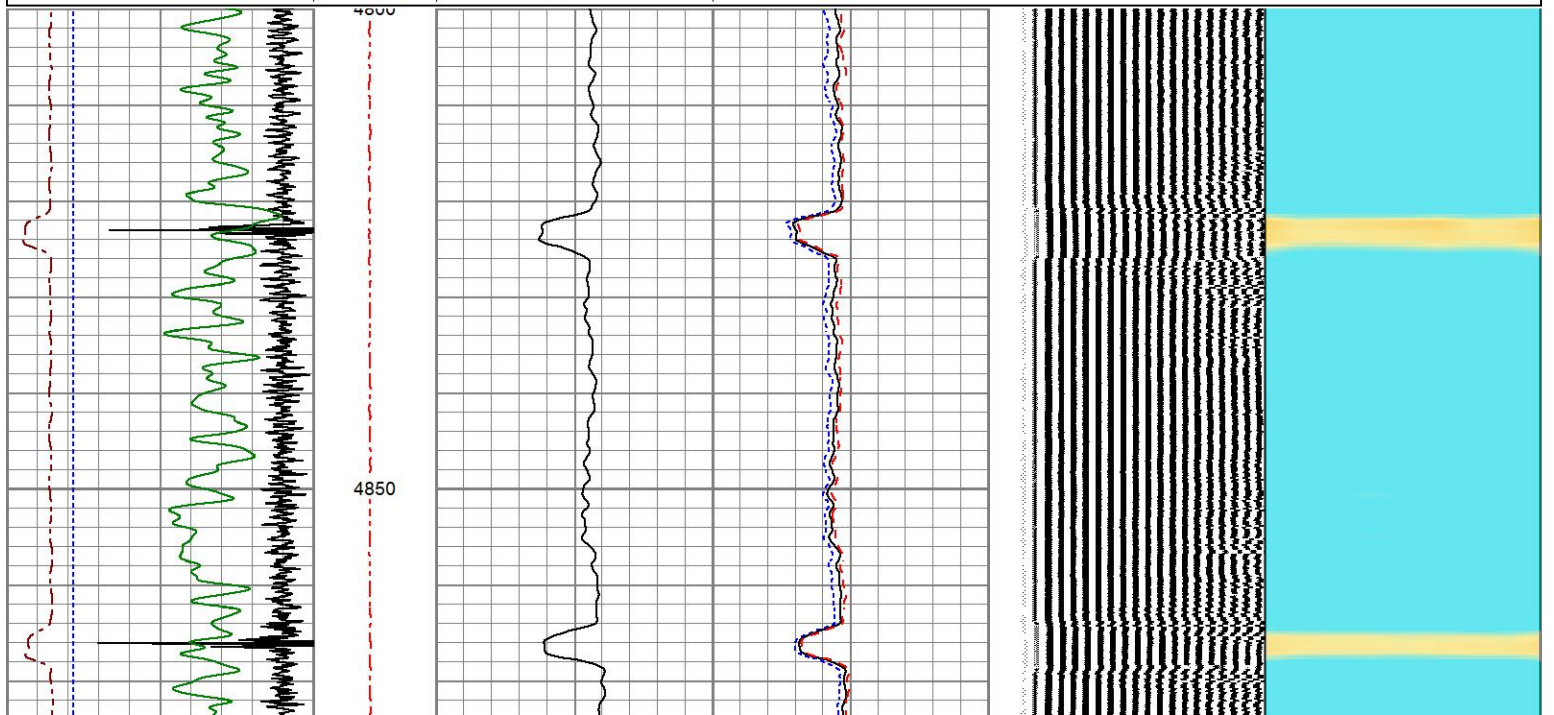
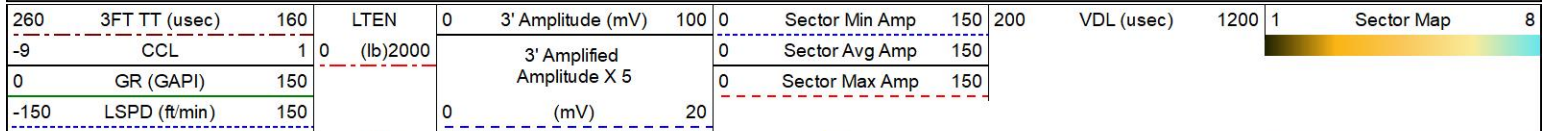




REPEAT PASS

0 PSI APPLIED AT SURFACE

Database File d:\bond logs\1037116_occidental_brattain\12-7ji_0512321541_20250623_scbl\1037116_occidental_brattain
 Dataset Pathname pass8.1
 Presentation Format res_scbl 8sec-gr-ccl
 Dataset Creation Mon Jun 23 09:37:13 2025
 Charted by Depth in Feet scaled 1:240



Calibration Casing Diameter:
Calibration Depth:

4.500
2833.300

in
ft

Master Calibration, performed (Derived):

| | Raw (v) | | Calibrated (mv) | | Results | |
|-----|---------|-------|-----------------|---------|---------|--------|
| | Zero | Cal | Zero | Cal | Gain | Offset |
| 3' | -0.003 | 1.332 | 0.700 | 81.196 | 60.314 | 0.863 |
| CAL | -0.006 | 1.070 | | | | |
| 5' | 0.000 | 1.214 | 0.700 | 81.196 | 66.299 | 0.695 |
| SUM | | | | | | |
| S1 | -0.001 | 1.428 | 0.000 | 100.000 | 69.991 | 0.054 |
| S2 | -0.001 | 1.307 | 0.000 | 100.000 | 76.450 | 0.090 |
| S3 | 0.000 | 1.330 | 0.000 | 100.000 | 75.194 | -0.006 |
| S4 | -0.001 | 1.362 | 0.000 | 100.000 | 73.371 | 0.046 |
| S5 | -0.002 | 1.367 | 0.000 | 100.000 | 73.029 | 0.171 |
| S6 | -0.005 | 1.383 | 0.000 | 100.000 | 72.022 | 0.392 |
| S7 | -0.002 | 1.323 | 0.000 | 100.000 | 75.465 | 0.141 |
| S8 | -0.005 | 1.340 | 0.000 | 100.000 | 74.343 | 0.373 |

Internal Reference Calibration, performed (Not Performed):

| | Raw (v) | | Calibrated (v) | | Results | |
|-----|---------|-------|----------------|-------|---------|--------|
| | Zero | Cal | Zero | Cal | Gain | Offset |
| CAL | 0.000 | 0.000 | -0.006 | 1.070 | 1.000 | 0.000 |

Air Zero Calibration, performed Sun Jun 1 15:56:45 2025:

| | Raw (v) | | Calibrated (v) | | Results | |
|-----|---------|--|----------------|--|---------|--------|
| | Zero | | Zero | | Gain | Offset |
| 3' | 0.000 | | 0.000 | | | 0.000 |
| 5' | 0.000 | | 0.000 | | | 0.000 |
| SUM | | | | | | |
| S1 | 0.000 | | 0.000 | | | 0.000 |
| S2 | 0.000 | | 0.000 | | | 0.000 |
| S3 | 0.000 | | 0.000 | | | 0.000 |
| S4 | 0.000 | | 0.000 | | | 0.000 |
| S5 | 0.000 | | 0.000 | | | 0.000 |
| S6 | 0.000 | | 0.000 | | | 0.000 |
| S7 | 0.000 | | 0.000 | | | 0.000 |
| S8 | 0.000 | | 0.000 | | | 0.000 |



Company
Well
Field
County
State

OCCIDENTAL PETROLEUM CORP.
BRATTAIN L 12-17 JI
WATTENBURG
WELD
CO