

WGS84
±69ft

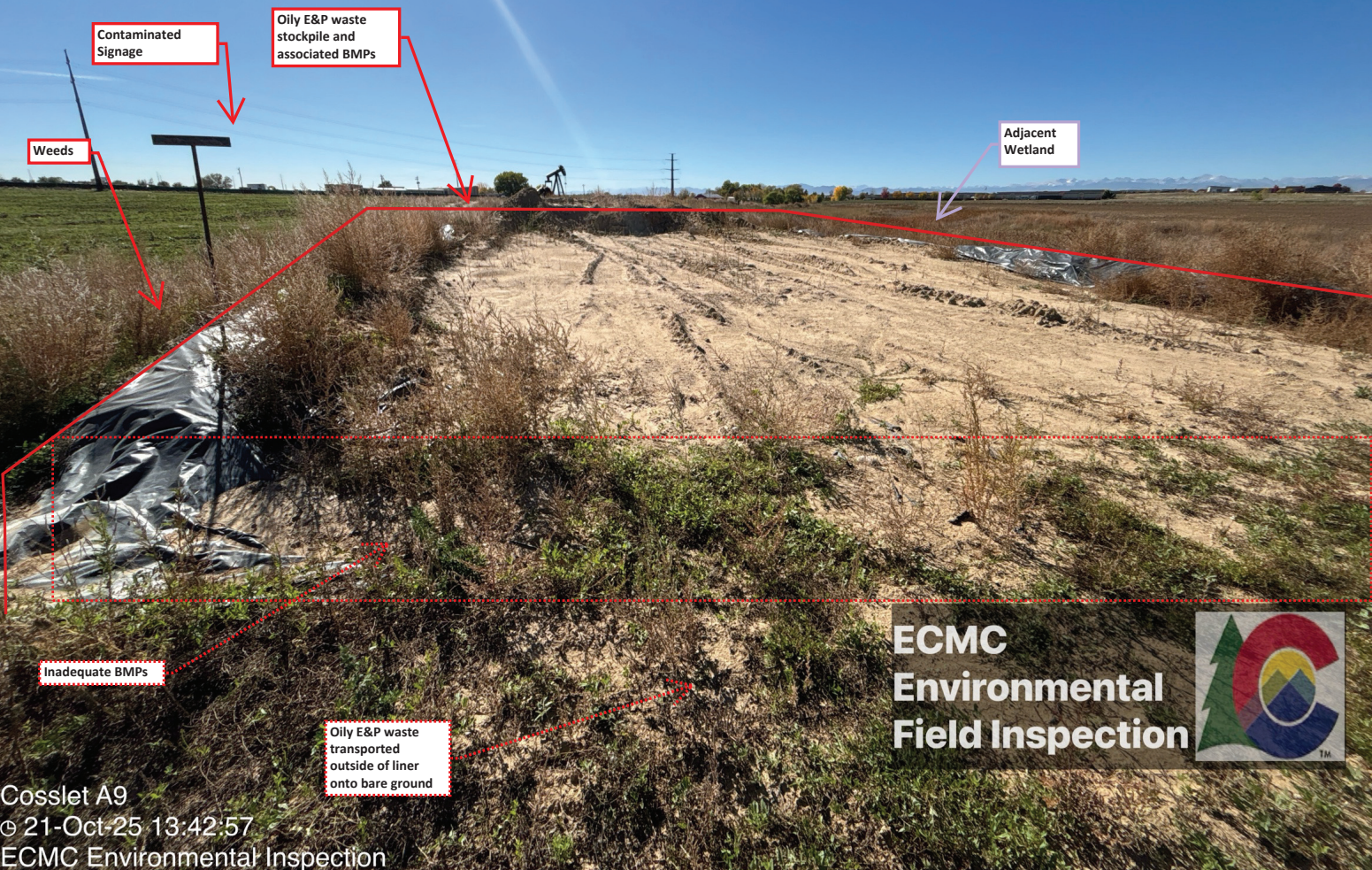
40.07526, -104.96717

m
±10m

1526

°T
±10

S178

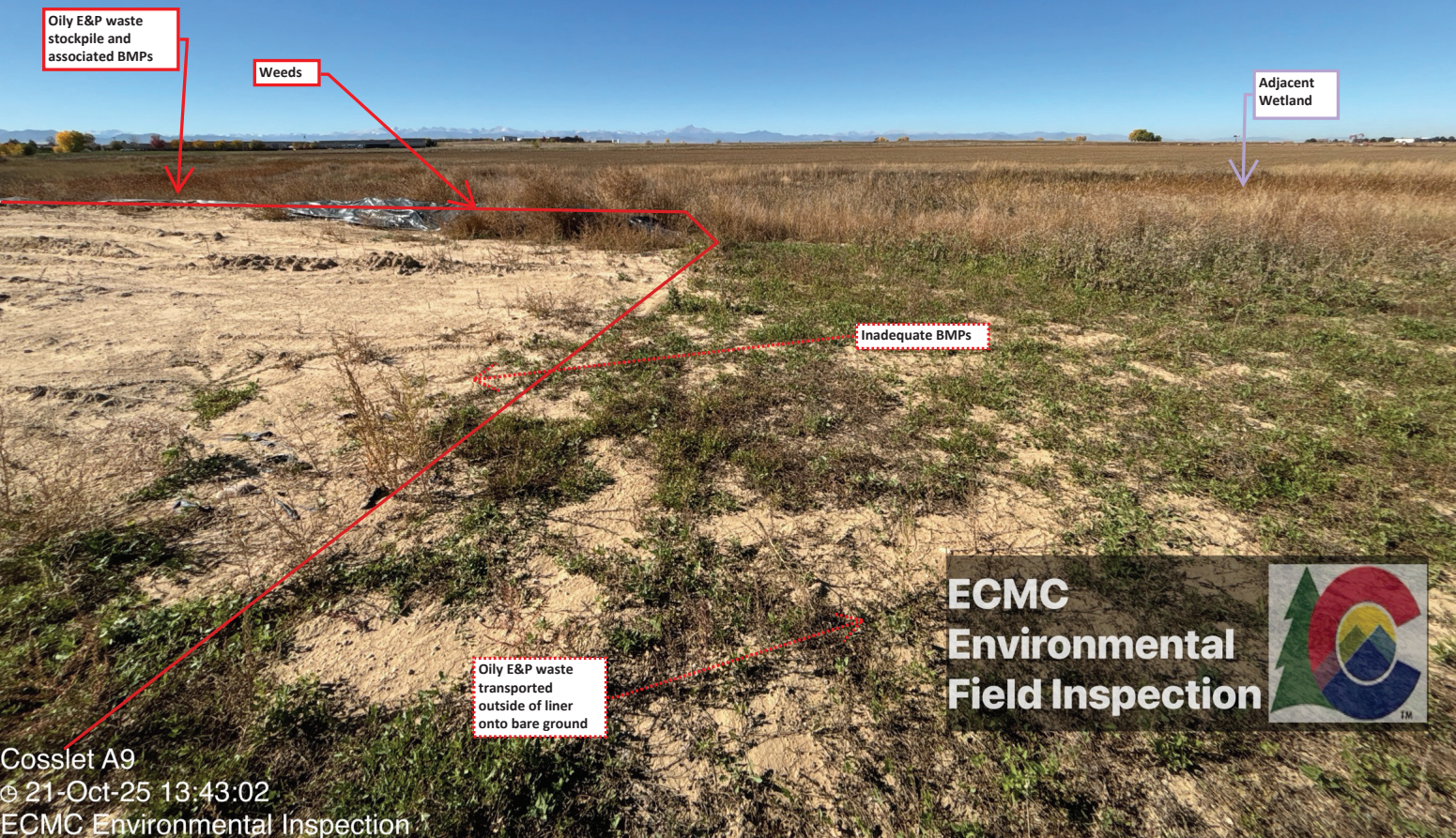


Cosslet A9
© 21-Oct-25 13:42:57
ECMC Environmental Inspection

ECMC
Environmental
Field Inspection



Weeds
Erosion - Transport of Oily E&P waste from stockpile off/outside liner onto bare ground adjacent to wetland.
Inadequate BMPs - E&P waste stockpile liner has torn in multiple locations and the earthen berm surrounding the stockpile is discontinuous.



Oily E&P waste stockpile and associated BMPs

Weeds

Adjacent Wetland

Inadequate BMPs

Oily E&P waste transported outside of liner onto bare ground

ECMC
Environmental
Field Inspection



Cosslet A9
© 21-Oct-25 13:43:02
ECMC Environmental Inspection

Weeds
Erosion - Transport of Oily E&P waste from stockpile off/outside liner onto bare ground adjacent to wetland.
Inadequate BMPs - E&P waste stockpile liner has torn in multiple locations and the earthen berm surrounding the stockpile is discontinuous.

WGS84
±52ft

40.07528, -104.96729

m
±8m

1525

°T
±10

SE154



Oily E&P waste
stockpile and
associated BMPs

Inadequate BMPs

Weeds

Adjacent
Wetland

ECMC
Environmental
Field Inspection



Cosslet A9
© 21-Oct-25 13:43:25
ECMC Environmental Inspection

Weeds
Erosion - Transport of Oily E&P waste from stockpile off/outside liner onto bare ground adjacent to wetland.
Inadequate BMPs - E&P waste stockpile liner has torn in multiple locations and the earthen berm surrounding the stockpile is discontinuous.



Fallen Fencing

Weeds

**ECMC
Environmental
Field Inspection**



Cosslet A9
21-Oct-25 13:43:57
ECMC Environmental Inspection

Inadequate fencing around open excavation within City of Dacono Limits
Weeds
Oil stained soil remains in situ within the open excavation.



ECMC
Environmental
Field Inspection



WGS84 $\pm 33\text{ft}$ 40.07544, -104.96711 $\Delta^m_{\pm 6\text{m}}$ 1525 $\triangle^{\circ, T}_{\pm 11}$ E104



Weeds

Weeds

ECMC
Environmental
Field Inspection



Cosset A9
© 21-Oct-25 13:45:15
ECMC Environmental Inspection



Fallen Fencing

Weeds

Stockpiled Oily Soil with inadequate BMPs

Fallen Fencing

Sloughed soil from sidewall

Weeds

Unstable sidewall

Sloughed soil from sidewall

Hydrocarbon sheen on groundwater

Weeds

ECMC
Environmental
Field Inspection



WGS84
±30ft

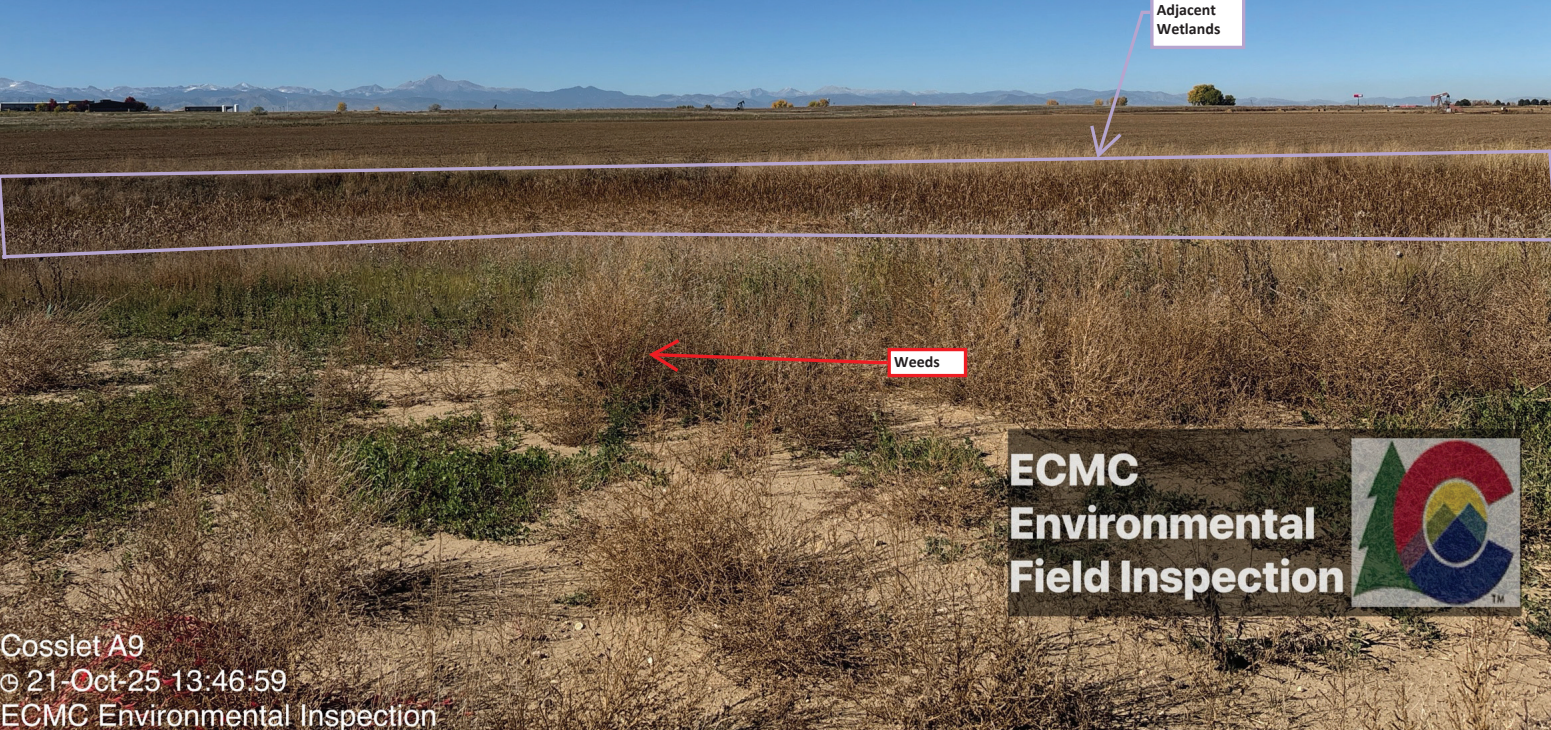
40.07552, -104.96698

m
±4m

1525

°T
±11

NW320



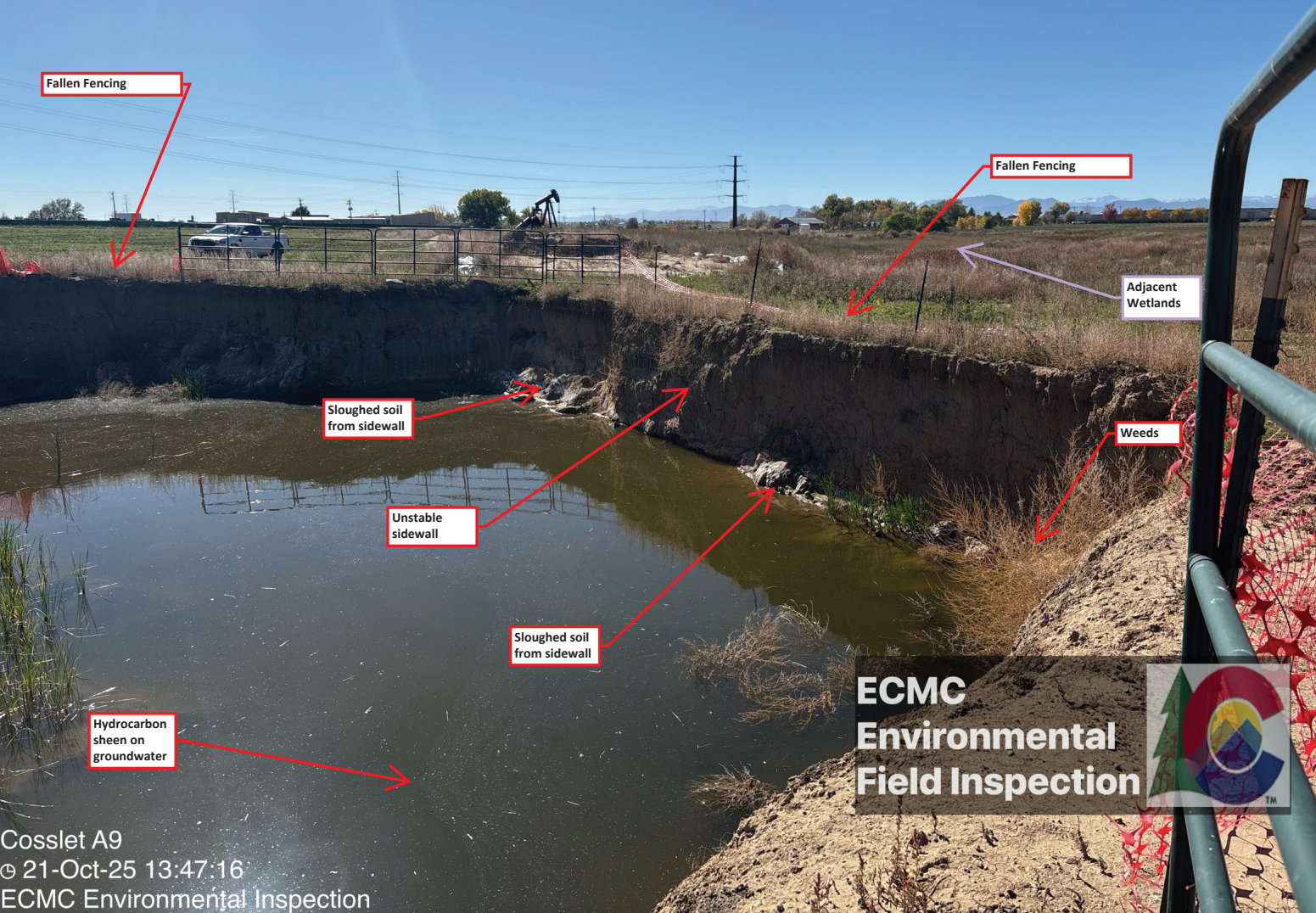
Adjacent
Wetlands

Weeds

ECMC
Environmental
Field Inspection



Cosslet A9
© 21-Oct-25 13:46:59
ECMC Environmental Inspection



Inadequate fencing around open excavation within City of Dacono Limits

WGS84
±45ft

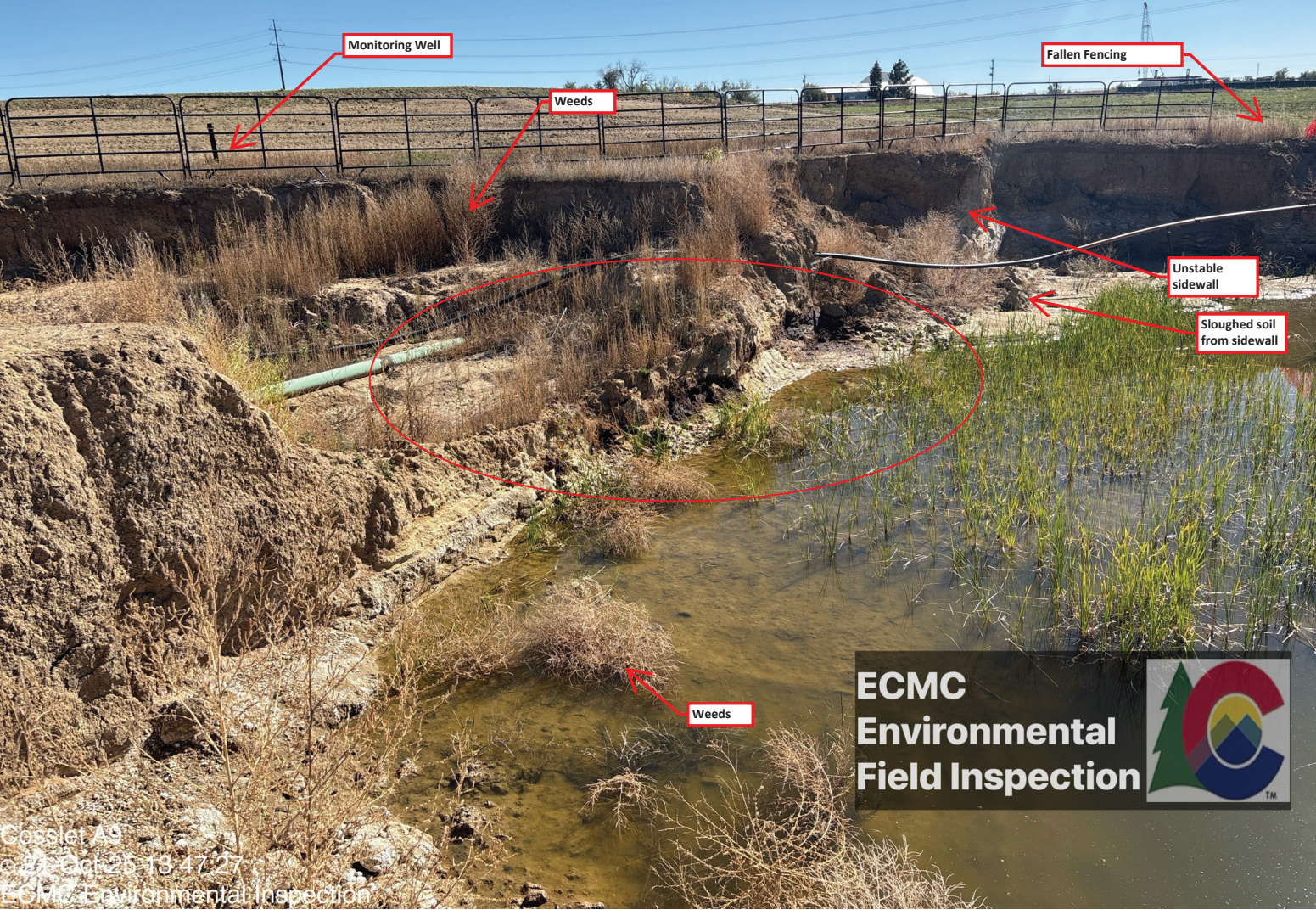
40.07551, -104.96693

m
±6m

1525

°T
±19

SE139



Cosslet A9
on 25 Oct 2018 13:47:27
ECMC Environmental Inspection

ECMC
Environmental
Field Inspection



WGS84 40.07564, -104.96662 m 1526 °T SE131
±23ft ±4m ±11

Missing J-Plug on
Monitoring Well



ECMC
Environmental
Field Inspection



Cassler A9
© 21-Oct-25 13:48:16
ECMC Environmental Inspection



Weeds

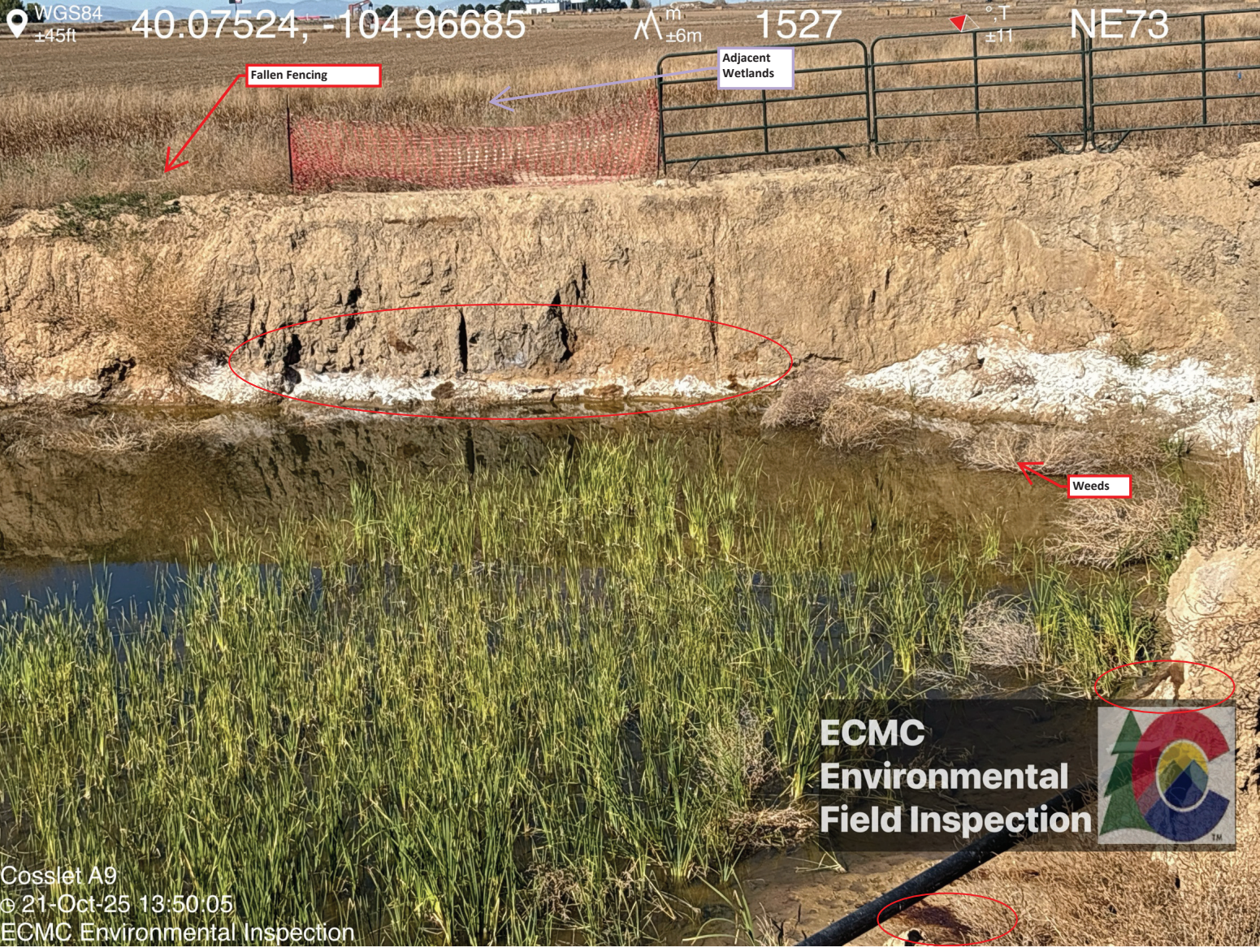
Adjacent
Wetlands

Improperly installed
and disintegrated
wattles

**ECMC
Environmental
Field Inspection**



Cossil A9
© 21-Oct-25 13:48:39
ECMC Environmental Inspection



WGS84
±45ft

40.07524, -104.96685

m
±6m

1527

°T
±11

NE73

Fallen Fencing

Adjacent Wetlands

Weeds

**ECMC
Environmental
Field Inspection**



Cosslet A9
© 21-Oct-25 13:50:05
ECMC Environmental Inspection

WGS84
±60ft

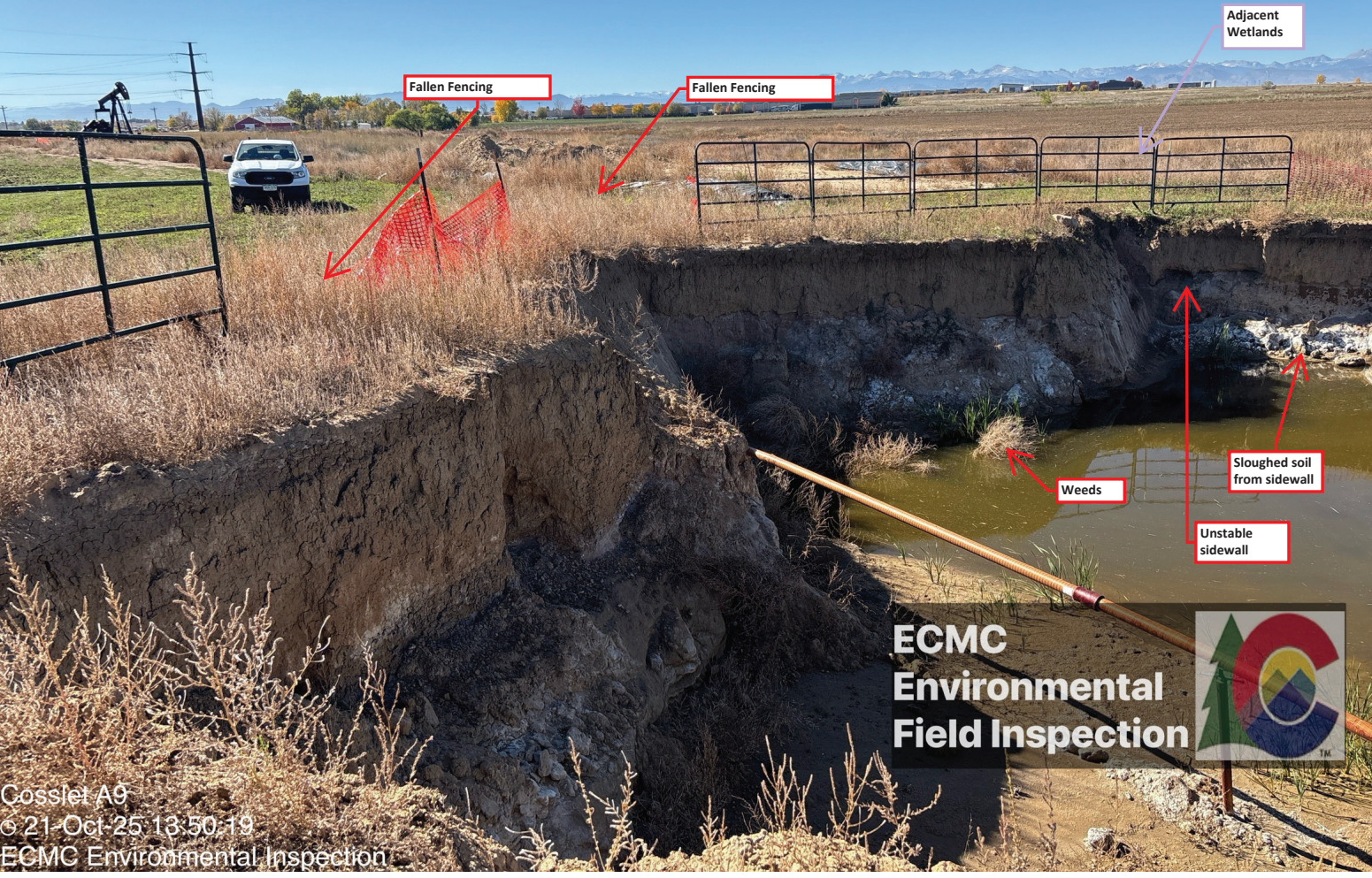
40.07524, -104.96686

m
±7m

1526

°T
±11

N347



Fallen Fencing

Fallen Fencing

Adjacent
Wetlands

Weeds

Sloughed soil
from sidewall

Unstable
sidewall

ECMC
Environmental
Field Inspection



Cosslet A9
© 21-Oct-25 13:50:19
ECMC Environmental Inspection

WGS84
±64ft

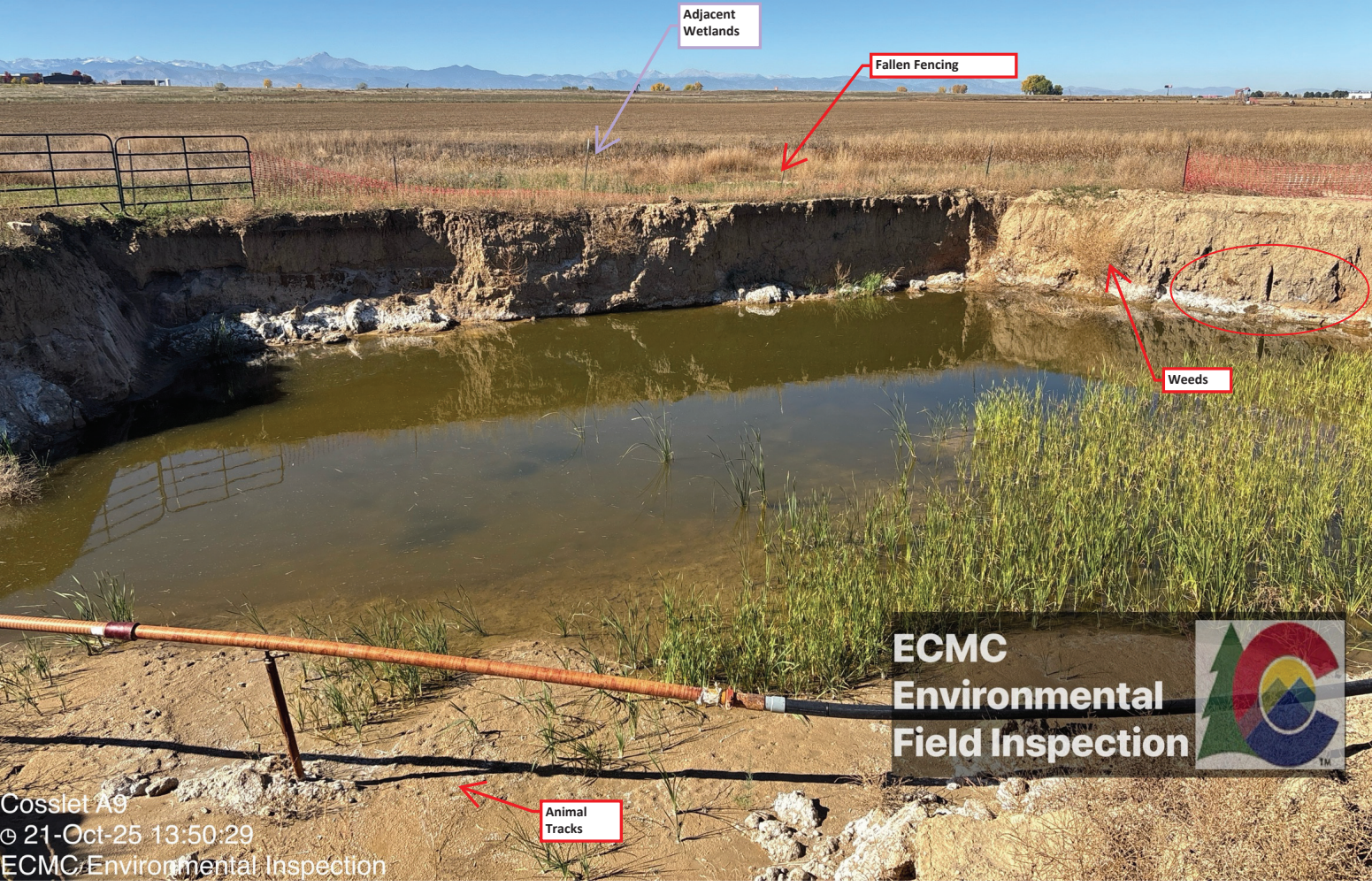
40.07524, -104.96685

m
±9m

1526

°T
±11

E76



Adjacent
Wetlands

Fallen Fencing

Weeds

Animal
Tracks

**ECMC
Environmental
Field Inspection**



Cosslet A9
© 21-Oct-25 13:50:29
ECMC Environmental Inspection

WGS84
±31ft

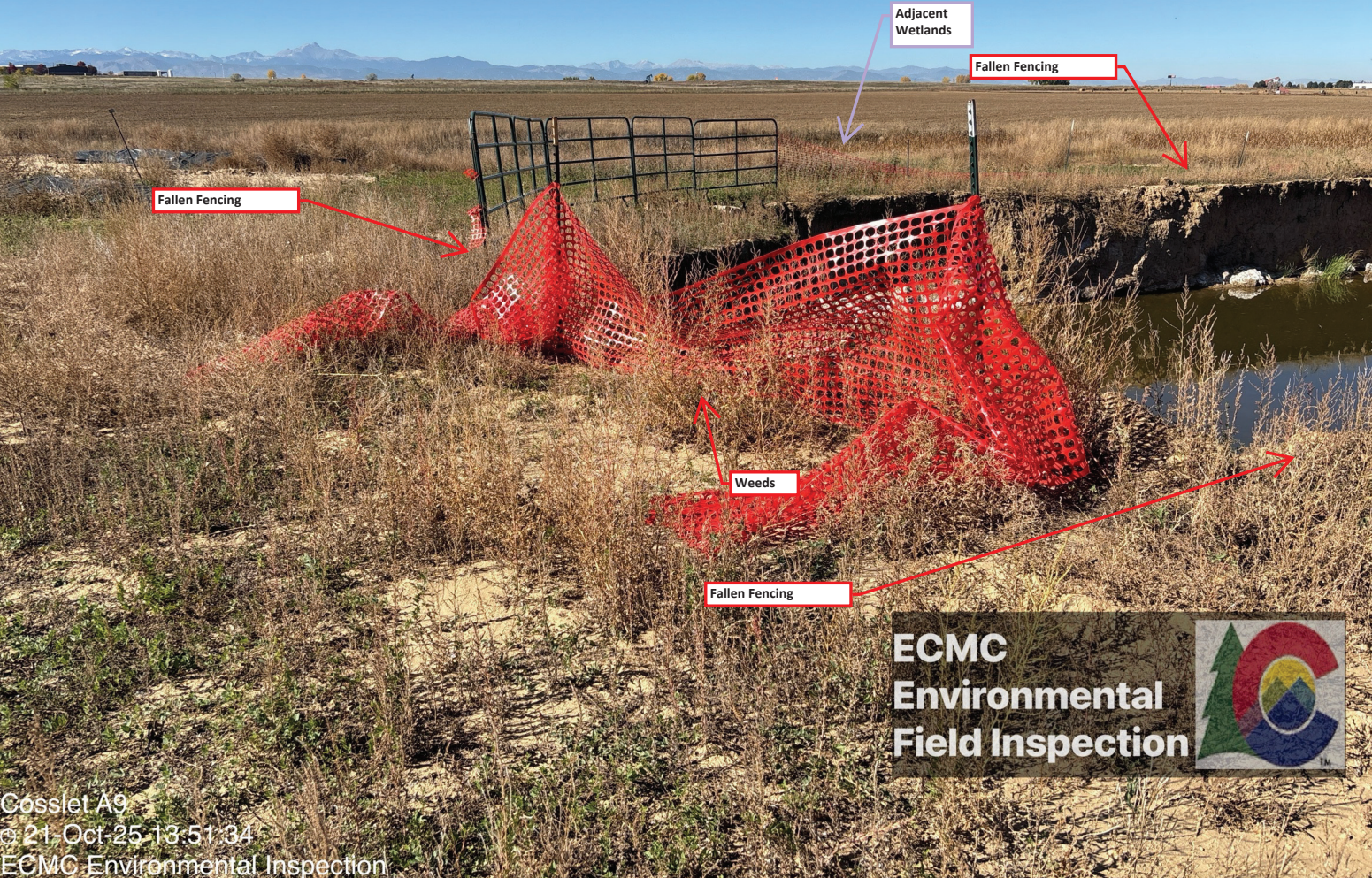
40.07518, -104.96695

m
±5m

1527

°T
±11

NW326



Fallen Fencing

Adjacent
Wetlands

Fallen Fencing

Weeds

Fallen Fencing

ECMC
Environmental
Field Inspection



Cosslet A9
© 21-Oct-25 13:51:34
ECMC Environmental Inspection

WGS84
±21ft

40.07511, -104.96725

m
±3m

1526

°T
±11

SE127



Oily Soil
Stockpile

Adjacent
Wetlands

Discontinuous
Berm

Tear in liner

Tear in liner

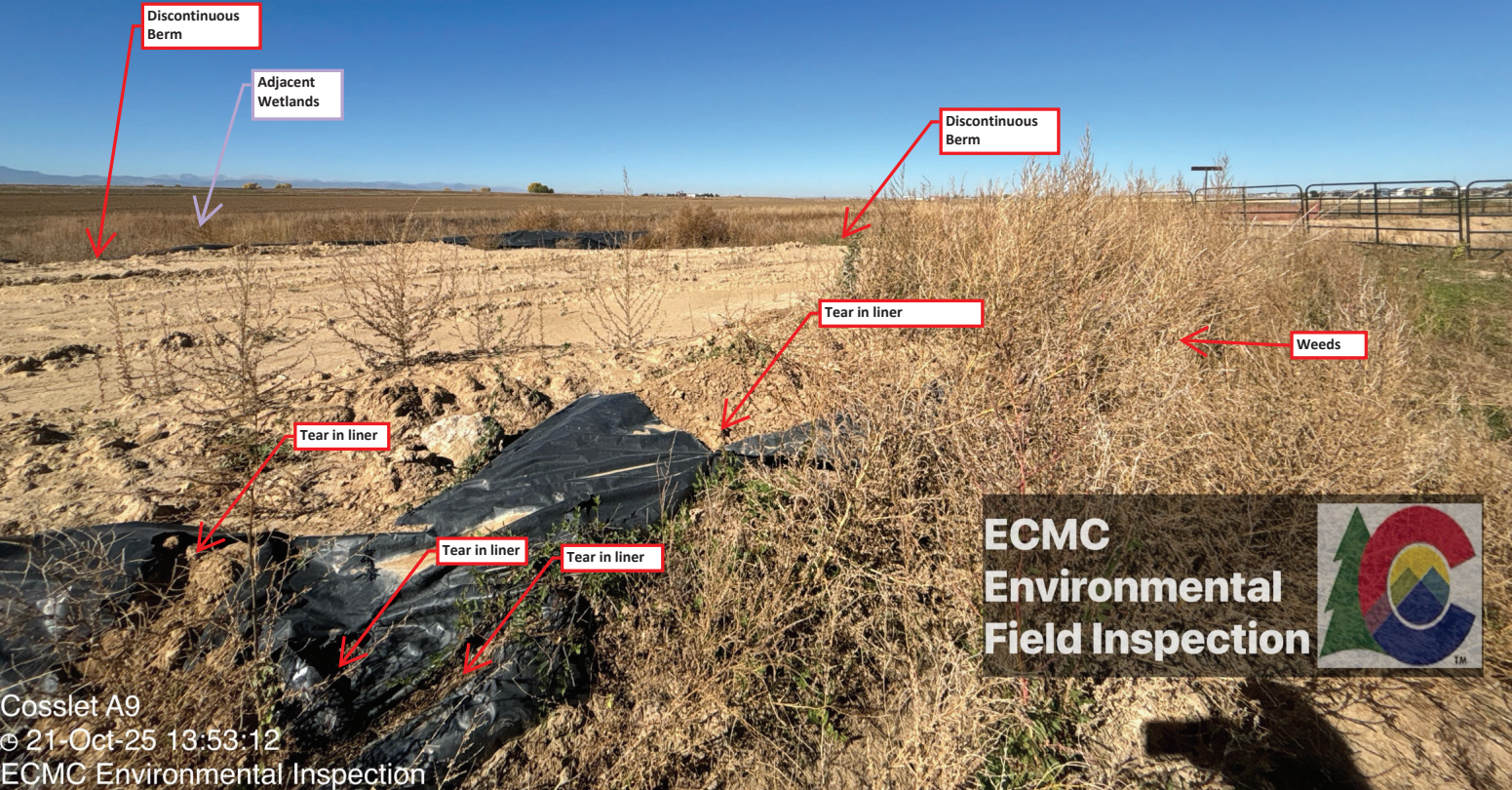
Tear in liner

Weeds

**ECMC
Environmental
Field Inspection**



Cosset A9
© 21-Oct-25 13:52:50
ECMC Environmental Inspection



Cosslet A9
© 21-Oct-25 13:53:12
ECMC Environmental Inspection

WGS84
±36ft

40.07505, -104.96732

m
±5m

1526

T
±11

NE36

Oily soil spilling
outside
containment

Weeds

Animal Tracks

Torn liner

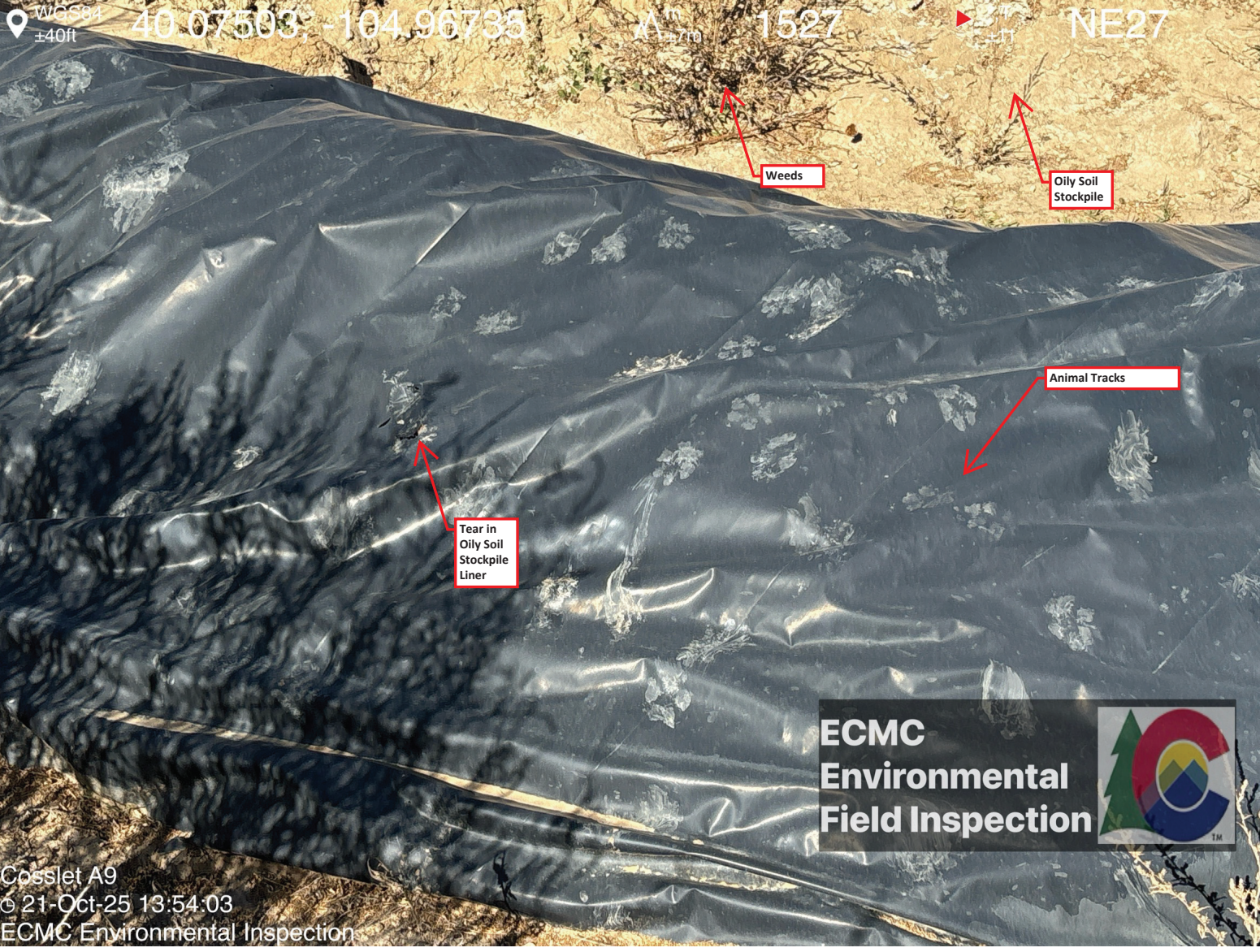
Weeds

Oily Soil
Stockpile

ECMC
Environmental
Field Inspection



Cosslet A9
© 21-Oct-25 13:53:41
ECMC Environmental Inspection



WCS84
±40ft

40.07593, -104.96735

1527

NE27

Weeds

Oily Soil
Stockpile

Animal Tracks

Tear in
Oily Soil
Stockpile
Liner

ECMC
Environmental
Field Inspection



Cosslet A9
© 21-Oct-25 13:54:03
ECMC Environmental Inspection



ECMC
Environmental
Field Inspection





ECMC
Environmental
Field Inspection



Cosslet A9
21-Oct-25 13:54:34
ECMC Environmental Inspection



Adjacent
Wetlands

Tear in
Oily Soil
Stockpile
Liner


Weeds

Tear in
Oily Soil
Stockpile
Liner

Oily Soil
Stockpile

Weeds

ECMC
Environmental
Field Inspection



Cosslet A9
© 21-Oct-25 13:54:51
ECMC Environmental Inspection



Oily Soil Stockpile

Spillage on top of berm

Weeds

Spillage outside berm

Animal tracks

ECMC
Environmental
Field Inspection

