

Chevron Rockies Business Unit

Field Qualitative Criteria for ECMC Reporting Associated with the Discovery of Potentially Impacted Material

If answered **Yes** to any of the questions listed below, this may suggest the presence of potentially impacted materials as outlined in ECMC Rule 912. Out of an abundance of caution, a “Yes” response will be reported to the ECMC within 24 hours after discovery, regardless of laboratory results. **Immediately notify the RBU Remediation Team.** Include a copy of this Field Qualitative Spill Criteria Checklist in the field Report.

Please answer the following questions when on-site:

1. Is there visible petroleum hydrocarbon staining in the soil?
(Yes / **No**)
2. Does the soil sample from the stained area have a petroleum odor?
(Yes / **No**)
3. Is there a petroleum hydrocarbon sheen on the nearby surface water?
(Yes / **No**)
4. Does there appear to be a sheen on the surface of accumulated groundwater or seeps within the excavation indicative of petroleum?
(Yes / **No**)
5. Is stained soil in contact with groundwater?
(Yes / **No**)

Please Include relevant photos of the site conditions for items 1-5.

Location name: GOLD 32-9U WH (REM # 42471)

Please Circle Facility Type: **Well** / Flowline / Production Facility / Other

SITE NAME / REM: GOLD 32-9U / REM #42471								DATE: 10/7/25	WEATHER: 55F, Cloudy	
TYPE OF WORK: Wellhead Cut & Cap								CLIENT: PDC Energy Inc.		
LAT/LONG: 40.329360, -104.894000								PERSONNEL: DT, NI		
ESTIMATED DEPTH TO GROUNDWATER: No groundwater encountered								OTHER OBSERVATIONS: None		
SOIL SAMPLING								FACILITY INFRASTRUCTURE		
Date	Soil Sample ID	Soil Type	PID (ppm)	Staining (Y/N)	Odor (Y/N)	Time	Sent to lab on Ice? (Y/N)	EQUIPMENT		Quantity
								Above Ground Storage Tank (AST)		0
10/7/2025	WH01@4.5'	OL-OH	0.0	N	N	11:34	Y	Buried or Partially Buried Vessel		0
10/7/2025	WH01-N@3.5'	OL-OH	2.5	N	N	11:32	N	Separator		0
10/7/2025	WH01-S@3.5'	OL-OH	0.0	N	N	11:36	N	Emission Control Device (ECD)		0
10/7/2025	WH01-E@3.5'	OL-OH	0.0	N	N	11:38	N	Dump Line		0
10/7/2025	WH01-W@3.5'	OL-OH	0.0	N	N	11:40	N	Wellhead		1
10/7/2025	FL01-R@3.5'	OL-OH	0.0	N	N	11:42	Y	Flowline		1
10/7/2025	BKG01@4'	OL-OH	0.1	N	N	11:40	Y	Third Party Equipment:		0
10/7/2025	BKG02@4'	OL-OH	0.3	N	N	11:48	Y	Other:		0
10/7/2025	BKG03@4'	OL-OH	0.6	N	N	11:58	Y	Soil Loads Removed		
								IMPACTED SOIL IDENTIFIED? No		
								ESTIMATED VOLUME OF IMPACTS:		
								Date	Number	CY
								Total Removed		
								Disposal Facility:		
								Groundwater Recovery		
								DATE GW ENCOUNTERED:		DEPTH:
								GROUNDWATER IN CONTACT WITH IMPACTED SOIL?		
								LNAPL OR SHEEN OBSERVED ON GW?		
GROUNDWATER SAMPLING								Date	BBLS	
Date/Time	Groundwater Sample ID	Depth Collected	Turbid?	Sheen?	Odor?	Photo?	Sent to lab on Ice? (Y/N)			
									Total Removed	
									Disposal Facility:	



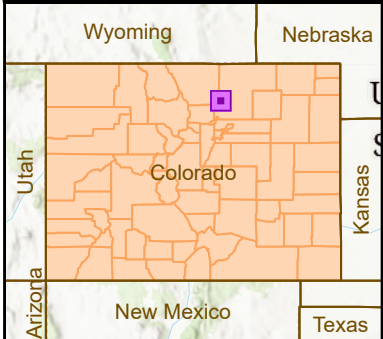
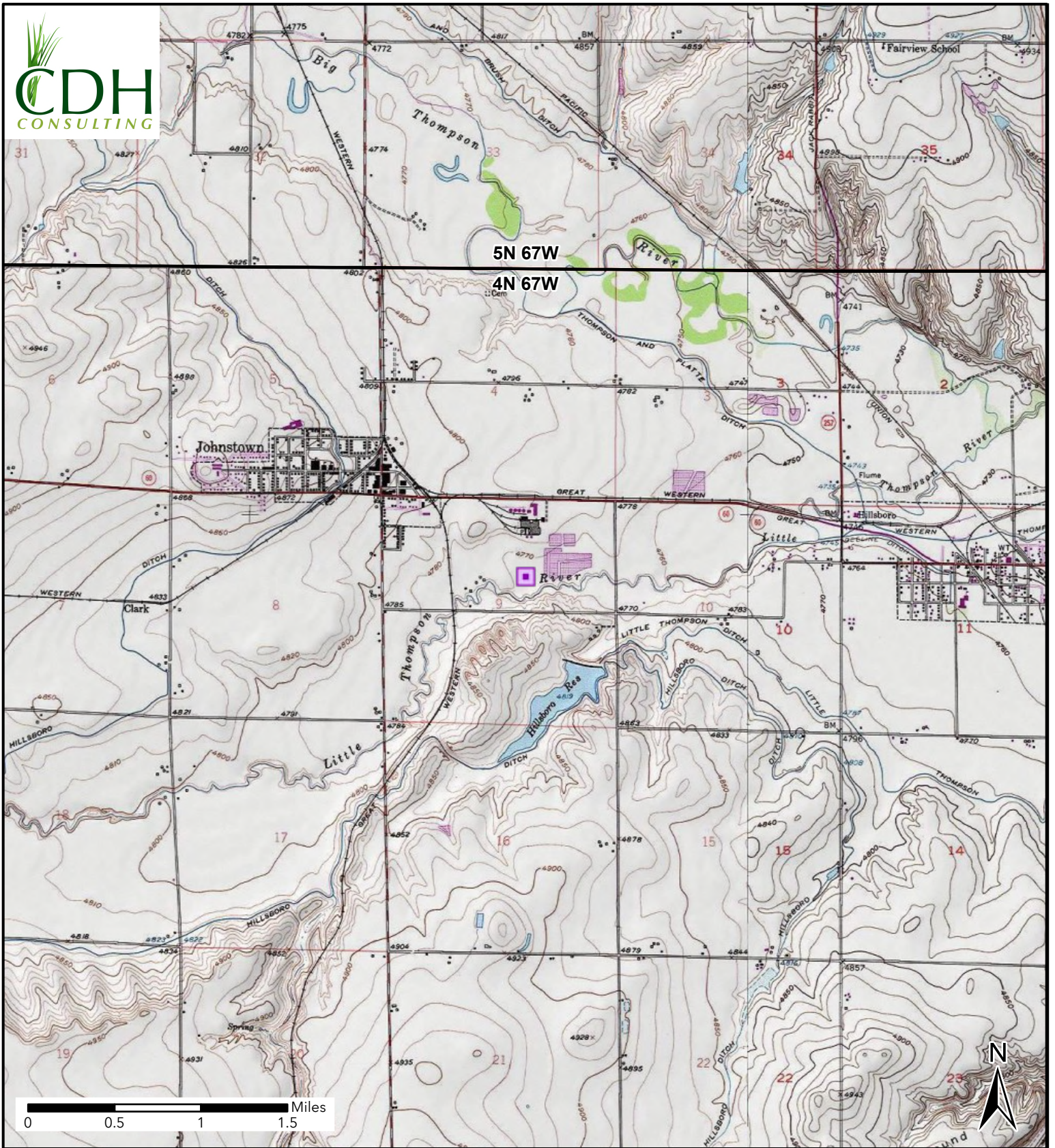


Figure 1 Site Location GOLD 32-9U

SWNE SEC 9-T4N-R67W
Weld County, Colorado
PDC Energy Inc


 Site Location

TABLE 1
FIELD DATA SUMMARY TABLE
PDC 69175
GOLD 32-9U, WELD COUNTY, COLORADO
REM # 42471

Sample ID	Sample Date	Depth (ft)	GPS Data		PDOP Value	VOC Concentration (ppm)
			Latitude	Longitude		
WH01@4.5'	10/7/2025	4.5	40.329381	-104.894011	0.800000	0.0
WH01-N@3.5'	10/7/2025	3.5	40.329396	-104.894014	1.200000	2.5
WH01-S@3.5'	10/7/2025	3.5	40.329372	-104.894008	0.900000	0.0
WH01-E@3.5'	10/7/2025	3.5	40.329383	-104.893997	0.800000	0.0
WH01-W@3.5'	10/7/2025	3.5	40.329384	-104.894021	0.900000	0.0
FL01-R@3.5'	10/7/2025	3.5	40.329381	-104.894030	0.800000	0.0
BKG01@4'	10/7/2025	4	40.329349	-104.894622	1.000000	0.1
BKG02@4'	10/7/2025	4	40.329751	-104.894128	0.900000	0.3
BKG03@4'	10/7/2025	4	40.329558	-104.893157	0.900000	0.6

1. Global Positioning System (GPS) data is provided in decimal degrees using North American Datum (NAD) 83 UTMZone 13 North.

2. Volatile organic compound (VOC) concentrations are measured in the field using a photoionization detector (PID).

PDOP = Position Dilution of Precision

ppm = Parts per million

ft = Feet

TABLE 2
SUMMARY OF VOLATILE ORGANIC SOIL CHEMISTRY DATA
PDC 69175
GOLD 32-9U, WELD COUNTY, COLORADO
REM # 42471

Sample ID	Sample Date	Depth (ft)	Benzene (mg/kg)	Toluene (mg/kg)	Ethyl-Benzene (mg/kg)	Xylenes (mg/kg)	1,2,4- Trimethyl- Benzene (mg/kg)	1,3,5- Trimethyl- Benzene (mg/kg)	Naphthalene (mg/kg)	TPH (mg/kg)	TPH GRO (mg/kg)	TPH DRO (mg/kg)	TPH ORO (mg/kg)
ECMC Table 915-1 Limits (Residential SSL)			1.2	490	5.8	58	30	27	2	500	500**		
ECMC Table 915-1 Limits (Protection of Groundwater SSL)			0.0026	0.69	0.78	9.9	0.0081	0.0087	0.0038	500	500**		
WH01@4.5'	10/7/2025	4.5	<0.0012	<0.0025	<0.0025	<0.0025	<0.0025	<0.0025	<0.0024	703	<0.25	220	483
FL01-R@3.5'	10/7/2025	3.5	<0.0012	<0.0023	<0.0023	<0.0023	<0.0023	<0.0023	<0.0023	216.5	<0.23	66.5	150

1. Bold values exceed the ECMC Table 915-1 limit(s)
 2. Red & blue highlighted soil analytical values indicate an exceedance of the referenced soil screening level (SSL)
 3. * Indicates laboratory minimum detection limit in excess of SSL
 4. ** Summation of GRO+DRO+ORO must be less than 500 mg/kg
 5. Samples are reported as dry weight unless otherwise indicated in the laboratory PDF report(s).
- (<) = Analytical result is less than the indicated laboratory reporting limit.
TPH-GRO = Total petroleum hydrocarbons - gasoline range organics
TPH-DRO = Total petroleum hydrocarbons - diesel range organics
TPH-ORO = Total petroleum hydrocarbons - oil range organics
mg/kg = Milligrams per kilogram
ft = Feet
AP = Analysis pending
NA = Not analyzed

TABLE 3
SUMMARY OF POLYCYCLIC AROMATIC HYDROCARBON SOIL CHEMISTRY DATA
PDC 69175
GOLD 32-9U, WELD COUNTY, COLORADO
REM # 42471

Sample ID	Sample Date	Depth (ft)	Acenaphthene (mg/kg)	Anthracene (mg/kg)	Benzo (a) Anthracene (mg/kg)	Benzo (a) Pyrene (mg/kg)	Benzo (b) Fluoranthene (mg/kg)	Benzo (k) Fluoranthene (mg/kg)	Chrysene (mg/kg)	Dibenzo (a,h) Anthracene (mg/kg)	Fluoranthene (mg/kg)	Fluorene (mg/kg)	Indeno (1,2,3-cd) Pyrene (mg/kg)	Pyrene (mg/kg)	1-Methyl - Naphthalene (mg/kg)	2-Methyl - Naphthalene (mg/kg)
ECMC Table 915-1 Limits (Residential SSL)			360	1800	1.1	0.11	1.1	11	110	0.11	240	240	1.1	180	18	24
ECMC Table 915-1 Limits (Protection of Groundwater SSL)			0.55	5.8	0.011	0.24	0.3	2.9	9	0.096	8.9	0.54	0.98	1.3	0.006	0.019
WH01@4.5'	10/7/2025	4.5	<0.0049	<0.0049	<0.0061	<0.0049	<0.0049	<0.0049	<0.0049	<0.0049	<0.0049	<0.0049	<0.0049	<0.0049	<0.0049	<0.0049
FL01-R@3.5'	10/7/2025	3.5	<0.0046	<0.0046	<0.0057	<0.0046	<0.0046	<0.0046	<0.0046	<0.0046	<0.0046	<0.0046	<0.0046	<0.0046	<0.0046	<0.0046

1. Bold values exceed the ECMC Table 915-1 limit(s)

2. Red & blue highlighted soil analytical values indicate an exceedance of the referenced soil screening level (SSL)

3. * Indicates laboratory minimum detection limit in excess of SSL

4. Samples are reported as dry weight unless otherwise indicated in the laboratory PDF report(s).

(<) = Analytical result is less than the indicated laboratory reporting limit.

mg/kg = Milligrams per kilogram

ft = Feet

AP = Analysis pending

NA = Not analyzed

TABLE 4
SUMMARY OF SOIL SUITABILITY FOR RECLAMATION
PDC 69175
GOLD 32-9U, WELD COUNTY, COLORADO
REM # 42471

Sample ID	Sample Date	Depth (ft)	pH (Standard Units)	EC (mmhos/cm)	SAR (Standard Units)	Boron (mg/L)
ECMC Table 915-1 Soil Suitability Limits			6 - 8.3	<4	<6	2
WH01@4.5'	10/7/2025	4.5	7.12	2.4	0.114	<0.50
FL01-R@3.5'	10/7/2025	3.5	7.09	2.7	0.0887	<0.50
BKG01@4'	10/7/2025	4	6.34	6.1	2.46	<0.50
BKG02@4'	10/7/2025	4	4.57	6.3	3.39	<0.50
BKG03@4'	10/7/2025	4	4.12	5.2	2.11	<0.50
Maximum Background Concentration			6.34	6.3	3.39	NA

1. **Bold** faced values exceed the ECMC Table 915-1 limit(s), but are within background concentrations.

2. **Bold** faced values exceed the ECMC Table 915-1 limit(s) and native background concentrations.

3. Brown highlighted soil analytical values indicate a regulatory exceedance.

4. Samples are reported as dry weight unless otherwise indicated in the laboratory PDF report(s).

ft = Feet

EC = Electrical Conductivity

SAR = Sodium adsorption ratio

mmhos/cm = millimhos per centimeter

mg/L = milligrams per liter

(<) = Analytical result is less than the indicated laboratory reporting limit

NA = Not analyzed

TABLE 5
SUMMARY OF METALS IN SOIL CHEMISTRY DATA
PDC 69175
GOLD 32-9U, WELD COUNTY, COLORADO
REM # 42471

Sample ID	Sample Date	Depth (ft)	Arsenic (mg/kg)	Barium (mg/kg)	Cadmium (mg/kg)	Chromium (VI) (mg/kg)	Copper (mg/kg)	Lead (mg/kg)	Nickel (mg/kg)	Selenium (mg/kg)	Silver (mg/kg)	Zinc (mg/kg)
ECMC Table 915-1 Limits (Residential SSL)			0.68	15000	71	0.3	3100	400	1500	390	390	23000
ECMC Table 915-1 Limits (Protection of Groundwater SSL)			0.29	82	0.38	0.00067	46	14	26	0.26	0.8	370
WH01@4.5'	10/7/2025	4.5	3.3	2230	0.61	0.55	108	43.1	11.4	0.40	<0.084	103
FL01-R@3.5'	10/7/2025	3.5	1.9	4690	0.28	0.7	19.2	14.1	7.9	0.42	<0.080	37.6
BKG01@4'	10/7/2025	4	1.7	208	<0.097	1.2	14.6	10.2	10.8	0.65	<0.097	54.5
BKG02@4'	10/7/2025	4	0.46	226	<0.082	0.51	7.2	4.1	3.9	0.21	<0.082	19.5
BKG03@4'	10/7/2025	4	0.38	210	<0.095	<0.44 *	7.6	6.1	3.1	<0.19	<0.095	13.9
1.25x Maximum Background Concentration			2.13	283	NA	1.50	18.3	12.8	13.5	0.81	NA	68.1

1. **Bold** faced values exceed the ECMC Table 915-1 limit(s), but are within 1.25x background concentrations.

2. **Bold** faced values exceed the ECMC Table 915-1 limit(s) and native background concentrations.

3. Red & blue highlighted soil analytical values indicate an exceedance of the referenced soil screening level (SSL).

4. Non-detect background results accounted for in the highest background concentration by using the reporting limit.

5. Samples are reported as dry weight unless otherwise indicated in the laboratory PDF report(s).

(<) = Analytical result is less than the indicated laboratory reporting limit.

mg/kg = Milligrams per kilogram

ft = Feet

* Indicates laboratory minimum detection limit in excess of SSL

NA = Not analyzed

Photographic Log
GOLD 32-9U - REM #42471
PDC Energy, Inc.
10/07/2025



Photo 1: View of FL01-R sample location, facing west-southwest

Photographic Log
GOLD 32-9U - REM #42471
PDC Energy, Inc.
10/07/2025



Photo 2: View of excavation extent, facing north

Photographic Log
GOLD 32-9U - REM #42471
PDC Energy, Inc.
10/07/2025



Photo 3: View of excavation extent, facing east-northeast

Photographic Log
GOLD 32-9U - REM #42471
PDC Energy, Inc.
10/07/2025

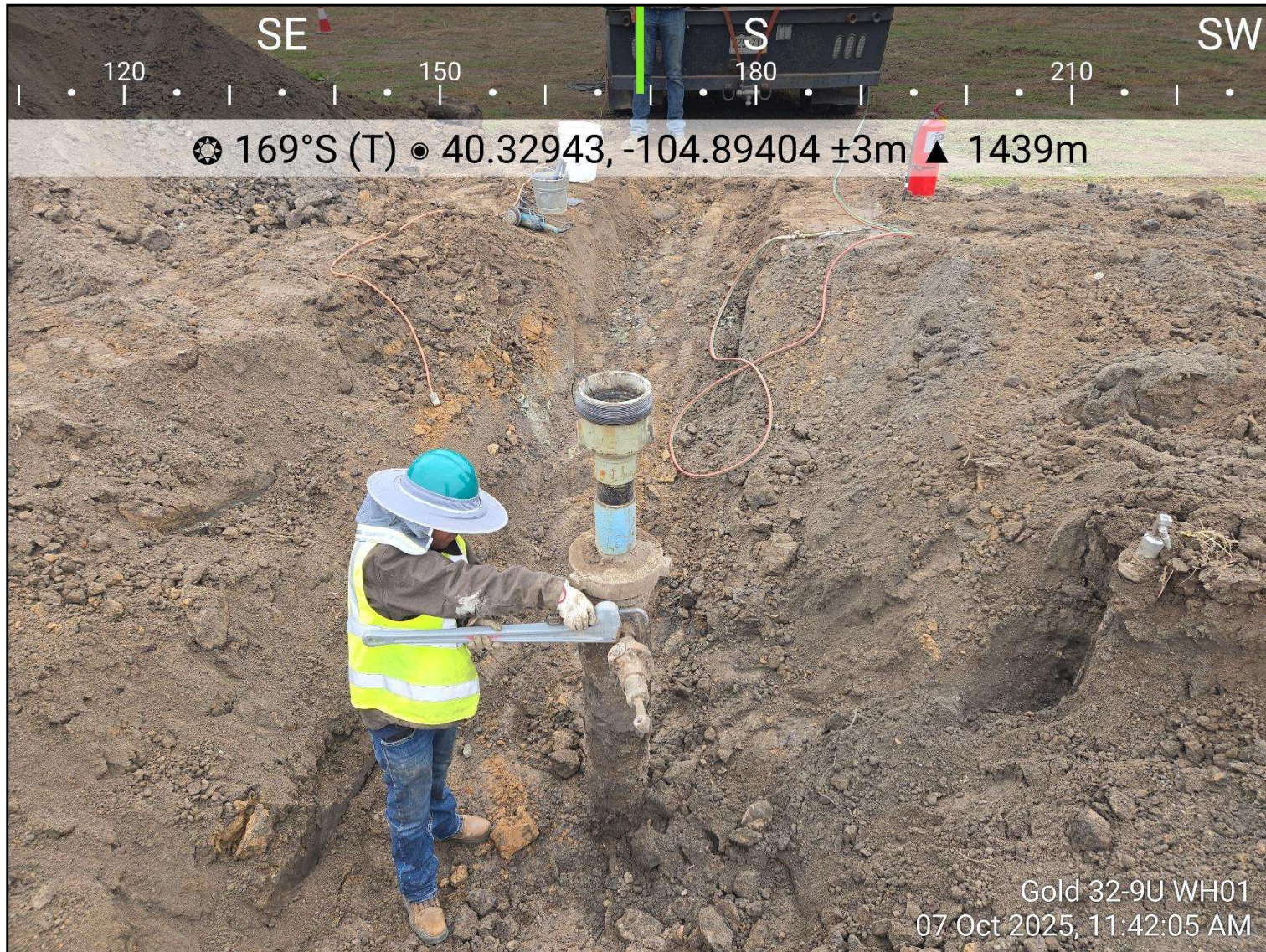


Photo 4: View of excavation extent, facing south

Photographic Log
GOLD 32-9U - REM #42471
PDC Energy, Inc.
10/07/2025



Photo 5: View of excavation extent, facing northwest

Photographic Log
GOLD 32-9U - REM #42471
PDC Energy, Inc.
10/07/2025

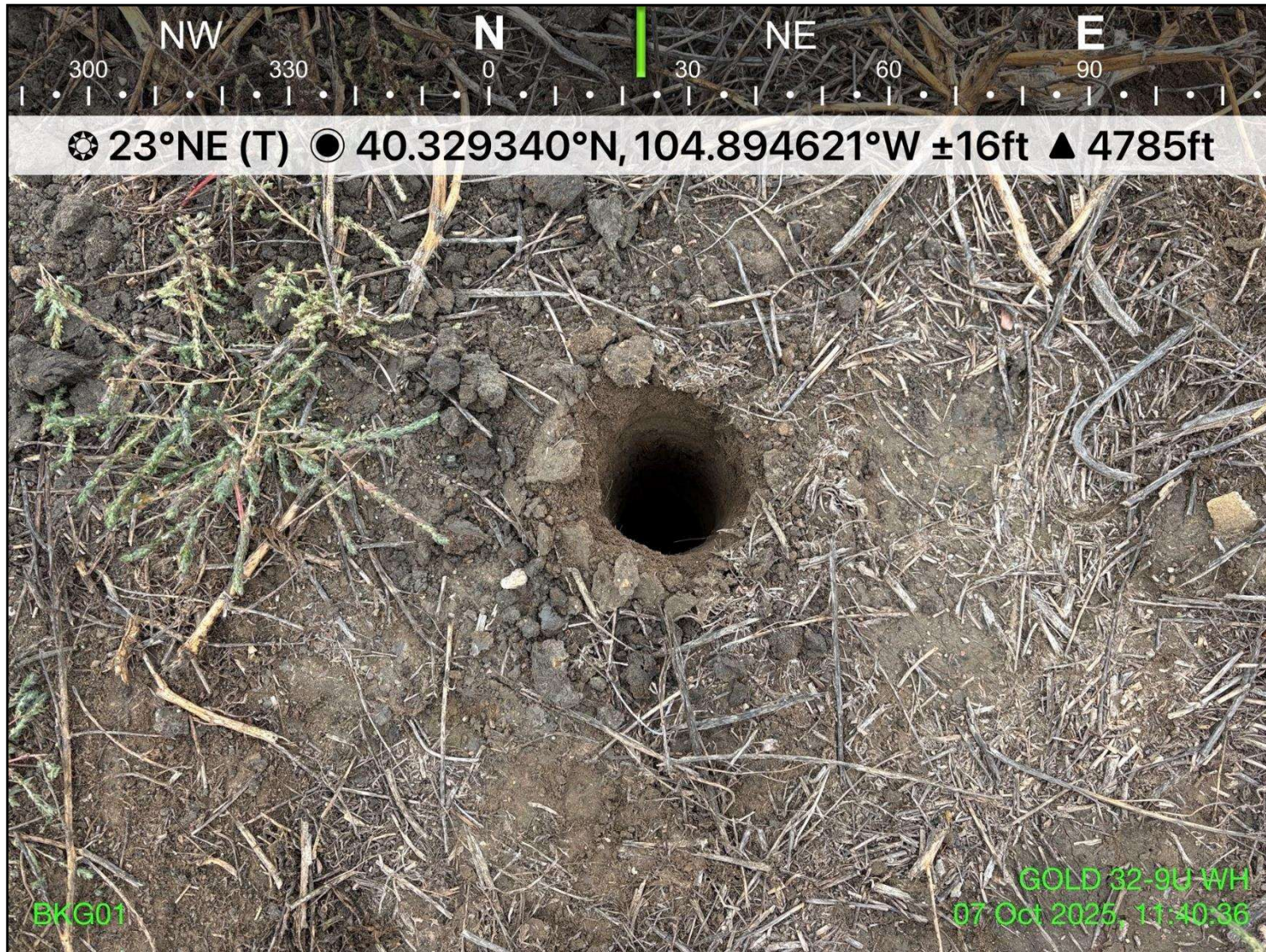


Photo 6: View of BKG01 sample location, facing north-northeast

Photographic Log
GOLD 32-9U - REM #42471
PDC Energy, Inc.
10/07/2025

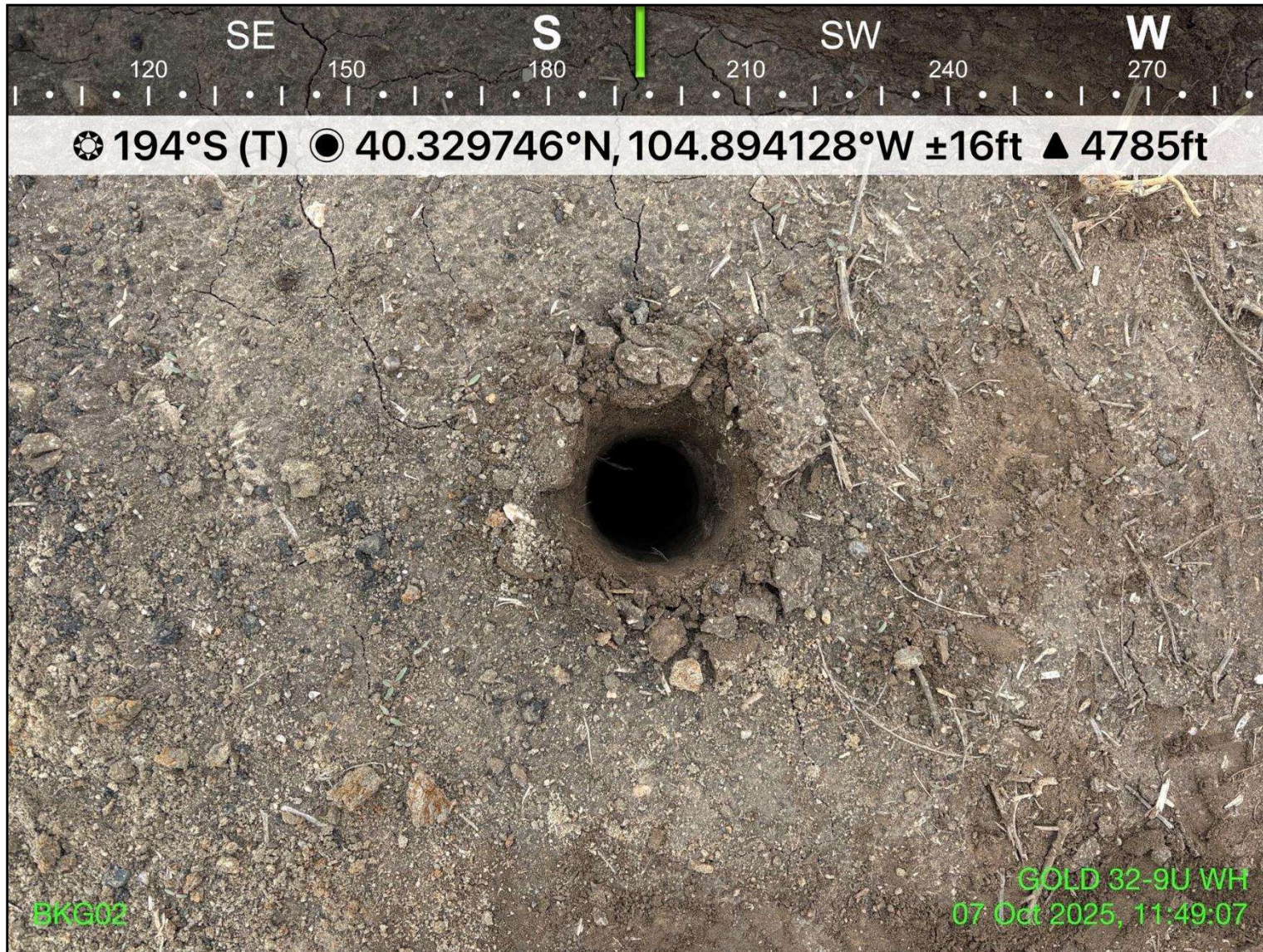


Photo 7: View of BKG02 sample location, facing south

Photographic Log
GOLD 32-9U - REM #42471
PDC Energy, Inc.
10/07/2025



Photo 8: View of BKG03 sample location, facing south