

# Edith Ann-Duckworth Facilities 21H-O268

NWSE Sec. 21-T2N-R68W

Facility ID #: 434303

Remediation Project #: 40725

Separator Decommissioning Data Package

August 2025

Prepared by Tasman, Inc.



On behalf of Crestone Peak Resources Operating, LLC



# **FIELD NOTES AND PHOTO LOG**





# Photographic Log

04 Aug 2025, 13:39:59			04 Aug 2025, 13:40:15		
<b>Equipment ID:</b>		<b>Equipment Type:</b>	<b>Equipment ID:</b>		<b>Equipment Type:</b>
<b>Material:</b>	<b>Volume:</b>	<b>Contents:</b>	<b>Material:</b>	<b>Volume:</b>	<b>Contents:</b>
<b>Notes/Conditions:</b> Soil sampling location			<b>Notes/Conditions:</b> Soil sampling location		



# Photographic Log

234°SW (T) ● 40°7'21"N, 105°0'17"W ±16ft ▲ 4903ft			58°NE (T) ● 40°7'21"N, 105°0'18"W ±16ft ▲ 4903ft		
04 Aug 2025, 13:27:15			04 Aug 2025, 13:27:36		
<b>Equipment ID:</b>		<b>Equipment Type:</b>	<b>Equipment ID:</b>		<b>Equipment Type:</b>
<b>Material:</b>	<b>Volume:</b>	<b>Contents:</b>	<b>Material:</b>	<b>Volume:</b>	<b>Contents:</b>
<b>Notes/Conditions:</b> Soil sampling location			<b>Notes/Conditions:</b> Soil sampling location		



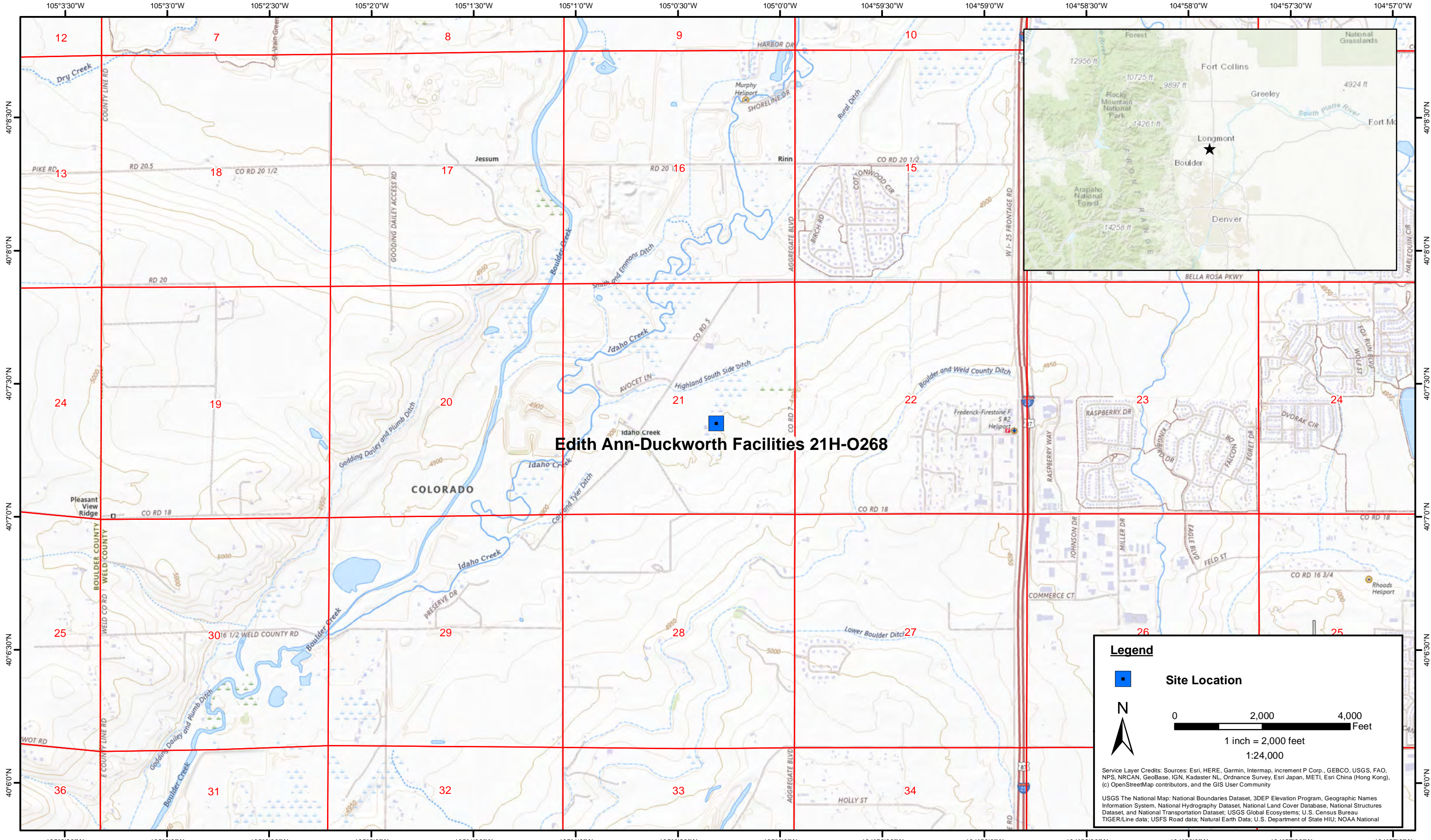
# Photographic Log



<b>Equipment ID:</b>		<b>Equipment Type:</b>		<b>Equipment ID:</b>		<b>Equipment Type:</b>	
<b>Material:</b>	<b>Volume:</b>	<b>Contents:</b>		<b>Material:</b>	<b>Volume:</b>	<b>Contents:</b>	

**Notes/Conditions:** Soil sampling location

# FIGURES



**Edith Ann-Duckworth Facilities 21H-O268**

**Legend**

**Site Location**

N

0 2,000 4,000 Feet

1 inch = 2,000 feet  
1:24,000

Service Layer Credits: Sources: Esri, HERE, Garmin, Intermap, increment P Corp., GEBCO, USGS, FAO, NPS, NRCAN, GeoBase, IGN, Kadaster NL, Ordnance Survey, Esri Japan, METI, Esri China (Hong Kong), (c) OpenStreetMap contributors, and the GIS User Community

USGS The National Map: National Boundaries Dataset, 3DEP Elevation Program, Geographic Names Information System, National Hydrography Dataset, National Land Cover Database, National Structures Dataset, and National Transportation Dataset; USGS Global Ecosystems; U.S. Census Bureau TIGER/Line data; USFS Road data; Natural Earth Data; U.S. Department of State HIU; NOAA National

DATE:	August 2025
DESIGNED BY:	S. Vogt
DRAWN BY:	J. Woffinden

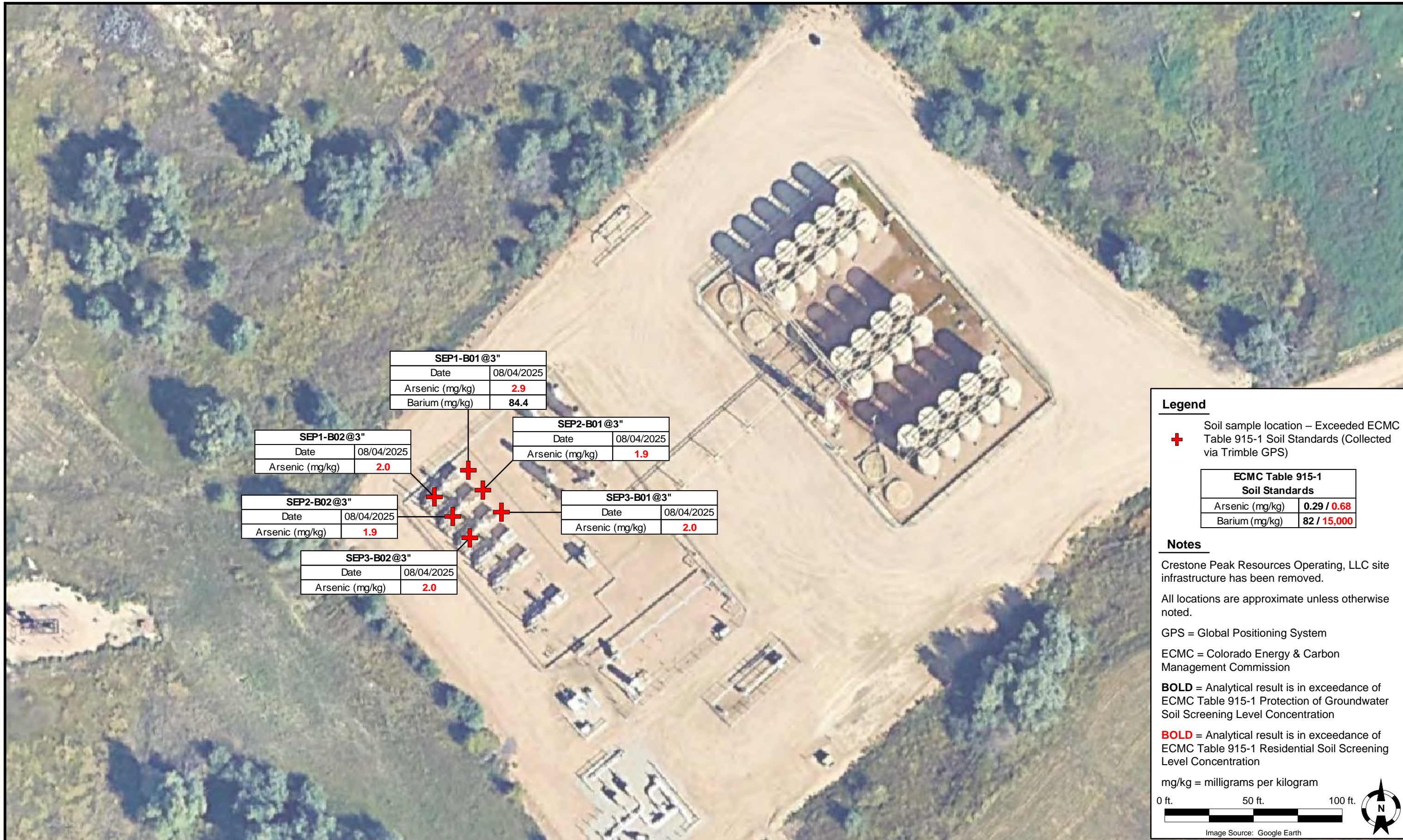


**Tasman, Inc.**  
4725 Independence St.  
Wheat Ridge, CO 80033

**Crestone Peak Resources Operating, LLC**  
**Edith Ann-Duckworth Facilities 21H-O268**  
NWSE Sec. 21-T2N-R68W  
Weld County, Colorado

Site Location Map

Figure  
1



SEP1-B01@3"	
Date	08/04/2025
Arsenic (mg/kg)	<b>2.9</b>
Barium (mg/kg)	<b>84.4</b>

SEP1-B02@3"	
Date	08/04/2025
Arsenic (mg/kg)	<b>2.0</b>

SEP2-B01@3"	
Date	08/04/2025
Arsenic (mg/kg)	<b>1.9</b>

SEP2-B02@3"	
Date	08/04/2025
Arsenic (mg/kg)	<b>1.9</b>

SEP3-B01@3"	
Date	08/04/2025
Arsenic (mg/kg)	<b>2.0</b>

SEP3-B02@3"	
Date	08/04/2025
Arsenic (mg/kg)	<b>2.0</b>

**Legend**

**+** Soil sample location – Exceeded ECMC Table 915-1 Soil Standards (Collected via Trimble GPS)

ECMC Table 915-1 Soil Standards	
Arsenic (mg/kg)	<b>0.29 / 0.68</b>
Barium (mg/kg)	<b>82 / 15,000</b>

**Notes**

Crestone Peak Resources Operating, LLC site infrastructure has been removed.

All locations are approximate unless otherwise noted.

GPS = Global Positioning System

ECMC = Colorado Energy & Carbon Management Commission

**BOLD** = Analytical result is in exceedance of ECMC Table 915-1 Protection of Groundwater Soil Screening Level Concentration

**BOLD** = Analytical result is in exceedance of ECMC Table 915-1 Residential Soil Screening Level Concentration

mg/kg = milligrams per kilogram

0 ft.                      50 ft.                      100 ft.

Image Source: Google Earth

DATE:	September 18, 2025
DESIGNED BY:	S. Vogt
DRAWN BY:	L. Bakel



**Tasman, Inc.**  
**4725 Independence St.**  
**Wheat Ridge, CO 80033**

**Crestone Peak Resources Operating, LLC**  
**Edith Ann-Duckworth Facilities 21H-O268**  
 NWSE Sec. 21-T2N-R68W  
 Weld County, Colorado

Facility Soil Sample  
 Location Map  
 (08/04/2025)

Figure  
 2

# TABLES

**TABLE 1**  
**EDITH ANN-DUCKWORTH FACILITIES 21H-O268**  
**SOIL SAMPLE LOCATIONS**  
**CRESTONE PEAK RESOURCES OPERATING, LLC**



Soil Sample Location	Depth	Date	PID Reading (ppm)	Latitude	Longitude	GPS PDOP Value	Lab (Y/N)
SEP1-B01@3"	3"	08/04/2025	2.0	40.122601	-105.005029	1.1	Y
SEP1-B02@3"	3"	08/04/2025	1.4	40.122560	-105.005096	0.8	Y
SEP2-B01@3"	3"	08/04/2025	1.6	40.122568	-105.004999	0.8	Y
SEP2-B02@3"	3"	08/04/2025	3.2	40.122528	-105.005058	0.8	Y
SEP3-B01@3"	3"	08/04/2025	0.6	40.122536	-105.004960	0.9	Y
SEP3-B02@3"	3"	08/04/2025	0.2	40.122495	-105.005025	0.8	Y

**Notes:**

PID = Photoionization Detector

ppm = parts per million

GPS = Global Positioning System

PDOP = Position Dilution of Precision

- = Not applicable

**TABLE 2**  
**EDITH ANN-DUCKWORTH FACILITIES 21H-0268**  
**SOIL ANALYTICAL DATA - VOCs**  
**CRESTONE PEAK RESOURCES OPERATING, LLC**



Soil Sample Location	Depth	Date	Benzene (mg/kg)	Toluene (mg/kg)	Ethylbenzene (mg/kg)	Total Xylenes (mg/kg)	Naphthalene (mg/kg)	TVPH-GRO (mg/kg)	TEPH-DRO (mg/kg)	TEPH-ORO (mg/kg)	1,2,4-TMB (mg/kg)	1,3,5-TMB (mg/kg)
<b>ECMC Organic Compounds in Soils - GSSL <sup>(1)</sup></b>			<b>0.0026</b>	<b>0.69</b>	<b>0.78</b>	<b>9.9</b>	<b>0.0038</b>	<b>500</b>			<b>0.0081</b>	<b>0.0087</b>
<b>ECMC Organic Compounds in Soils - RSSL <sup>(2)</sup></b>			<b>1.2</b>	<b>490</b>	<b>5.8</b>	<b>58</b>	<b>2</b>	<b>500</b>			<b>30</b>	<b>27</b>
SEP1-B01@3"	3"	08/04/2025	<0.0010	<0.0021	<0.0021	<0.0021	<0.0020	<0.21	<4.1	15.5	<0.0021	<0.0021
SEP1-B02@3"	3"	08/04/2025	<0.00095	<0.0019	<0.0019	<0.0019	<0.0020	<0.19	4.24	17.8	<0.0019	<0.0019
SEP2-B01@3"	3"	08/04/2025	<0.0011	<0.0021	<0.0021	<0.0021	<0.0021	<0.21	13.2	31.5	<0.0021	<0.0021
SEP2-B02@3"	3"	08/04/2025	<0.0010	<0.0021	<0.0021	<0.0021	<0.0021	<0.21	<4.1	15.4	<0.0021	<0.0021
SEP3-B01@3"	3"	08/04/2025	<0.0010	<0.0020	<0.0020	<0.0020	<0.0020	<0.20	<4.0	9.59	<0.0020	<0.0020
SEP3-B02@3"	3"	08/04/2025	<0.00095	<0.0019	<0.0019	<0.0019	<0.0021	<0.19	<4.1	11.7	<0.0019	<0.0019

**Notes:**

VOCs = Volatile Organic Compounds

(1) Standards for soil are taken from ECMC Table 915-1: Organic Compounds in Soils - Protection of Groundwater Soil Screening Level Concentrations (Effective January 15, 2021)

(2) Standards for soil are taken from ECMC Table 915-1: Organic Compounds in Soils - Residential Soil Screening Level Concentrations (Effective January 15, 2021)

ECMC = Colorado Energy & Carbon Management Commission

GSSL = Protection of Groundwater Soil Screening Level

RSSL = Residential Soil Screening Level

(<) = Analytical result is less than the indicated laboratory detection limit

mg/kg = milligrams per kilogram

TVPH - GRO = Total Volatile Petroleum Hydrocarbons - Gasoline Range Organics

TEPH - DRO = Total Extractable Petroleum Hydrocarbons - Diesel Range Organics

TEPH - ORO = Total Extractable Petroleum Hydrocarbons - Oil Range Organics

1,2,4 - TMB = 1,2,4 - Trimethylbenzene

1,3,5 - TMB = 1,3,5 - Trimethylbenzene

**BOLD** = Analytical result is in exceedance of ECMC Table 915-1: Organic Compounds in Soils - Protection of Groundwater Soil Screening Level Concentrations

**BOLD** = Analytical result is in exceedance of ECMC Table 915-1: Organic Compounds in Soils - Residential Soil Screening Level Concentrations

**TABLE 3**  
**EDITH ANN-DUCKWORTH FACILITIES 21H-0268**  
**SOIL ANALYTICAL DATA - PAHs**  
**CRESTONE PEAK RESOURCES OPERATING, LLC**



Soil Sample Location	Depth	Date	Acenaphthene (mg/kg)	Anthracene (mg/kg)	Benzo(a)A (mg/kg)	Benzo(b)F (mg/kg)	Benzo(k)F (mg/kg)	Benzo(a)P (mg/kg)	Chrysene (mg/kg)	D (a,h) A (mg/kg)	Fluoranthene (mg/kg)	Fluorene (mg/kg)	1,2,3-CD (mg/kg)	1-M (mg/kg)	2-M (mg/kg)	Pyrene (mg/kg)
<b>ECMC Organic Compounds in Soils - GSSL <sup>(1)</sup></b>			<b>0.55</b>	<b>5.8</b>	<b>0.011</b>	<b>0.3</b>	<b>2.9</b>	<b>0.24</b>	<b>9</b>	<b>0.96</b>	<b>8.9</b>	<b>0.54</b>	<b>0.98</b>	<b>0.006</b>	<b>0.019</b>	<b>1.3</b>
<b>ECMC Organic Compounds in Soils - RSSL <sup>(2)</sup></b>			<b>360</b>	<b>1,800</b>	<b>1.1</b>	<b>1.1</b>	<b>11</b>	<b>0.11</b>	<b>110</b>	<b>0.11</b>	<b>240</b>	<b>240</b>	<b>1.1</b>	<b>18</b>	<b>24</b>	<b>180</b>
SEP1-B01@3"	3"	08/04/2025	<0.0040	<0.0040	<0.0050	<0.0040	<0.0040	<0.0040	<0.0040	<0.0040	<0.0040	<0.0040	<0.0040	<0.0040	<0.0040	<0.0040
SEP1-B02@3"	3"	08/04/2025	<0.0040	<0.0040	<0.0049	<0.0040	<0.0040	<0.0040	<0.0040	<0.0040	<0.0040	<0.0040	<0.0040	<0.0040	<0.0040	<0.0040
SEP2-B01@3"	3"	08/04/2025	<0.0042	<0.0042	<0.0052	<0.0042	<0.0042	<0.0042	<0.0042	<0.0042	<0.0042	<0.0042	<0.0042	<0.0042	<0.0042	<0.0042
SEP2-B02@3"	3"	08/04/2025	<0.0042	<0.0042	<0.0052	<0.0042	<0.0042	<0.0042	<0.0042	<0.0042	<0.0042	<0.0042	<0.0042	<0.0042	<0.0042	<0.0042
SEP3-B01@3"	3"	08/04/2025	<0.0041	<0.0041	<0.0051	<0.0041	<0.0041	<0.0041	<0.0041	<0.0041	<0.0041	<0.0041	<0.0041	<0.0041	<0.0041	<0.0041
SEP3-B02@3"	3"	08/04/2025	<0.0042	<0.0042	<0.0053	<0.0042	<0.0042	<0.0042	<0.0042	<0.0042	<0.0042	<0.0042	<0.0042	<0.0042	<0.0042	<0.0042

**Notes:**

PAHs = Polycyclic Aromatic Hydrocarbons

(1) Standards for soil are taken from ECMC Table 915-1: Organic Compounds in Soils - Protection of Groundwater Soil Screening Level Concentrations (Effective January 15, 2021)

(2) Standards for soil are taken from ECMC Table 915-1: Organic Compounds in Soils - Residential Soil Screening Level Concentrations (Effective January 15, 2021)

ECMC = Colorado Energy & Carbon Management Commission

GSSL = Protection of Groundwater Soil Screening Level

RSSL = Residential Soil Screening Level

(<) = Analytical result is less than the indicated laboratory detection limit

mg/kg = milligrams per kilogram

Benzo(a)A = Benzo(a)Anthracene

Benzo(b)F = Benzo(b)Fluoranthene

Benzo(k)F = Benzo(k)Fluoranthene

Benzo(a)P = Benzo(a)Pyrene

D (a,h) A = Dibenz(a,h)Anthracene

1,2,3-CD = Indeno(1,2,3-cd)Pyrene

1-M = 1-Methylnaphthalene

2-M = 2-Methylnaphthalene

**BOLD** = Analytical result is in exceedance of ECMC Table 915-1: Organic Compounds in Soils - Protection of Groundwater Soil Screening Level Concentrations

**BOLD** = Analytical result is in exceedance of ECMC Table 915-1: Organic Compounds in Soils - Residential Soil Screening Level Concentrations

**TABLE 4**  
**EDITH ANN-DUCKWORTH FACILITIES 21H-0268**  
**SOIL ANALYTICAL DATA - METALS**  
**CRESTONE PEAK RESOURCES OPERATING, LLC**



Soil Sample Location	Depth	Date	Arsenic (mg/kg)	Barium (mg/kg)	Cadmium (mg/kg)	Chromium (VI) (mg/kg)	Copper (mg/kg)	Lead (mg/kg)	Nickel (mg/kg)	Selenium (mg/kg)	Silver (mg/kg)	Zinc (mg/kg)
ECMC Metals in Soils - GSSL <sup>(1)</sup>			0.29	82	0.38	0.00067	46	14	26	0.26	0.8	370
ECMC Metals in Soils - RSSL <sup>(2)</sup>			0.68	15,000	71	0.3	3,100	400	1,500	390	390	23,000
SEP1-B01@3"	3"	08/04/2025	2.9	84.4	0.18	<0.42	10.5	11.0	9.0	0.21	<0.051	37.9
SEP1-B02@3"	3"	08/04/2025	2.0	55.0	0.15	<0.41	7.9	6.1	6.4	0.21	<0.049	28.9
SEP2-B01@3"	3"	08/04/2025	1.9	54.8	0.11	<0.41	9.0	6.6	7.0	<0.20	<0.051	24.1
SEP2-B02@3"	3"	08/04/2025	1.9	58.8	0.11	<0.43	8.5	5.8	6.3	<0.20	<0.050	26.2
SEP3-B01@3"	3"	08/04/2025	2.0	60.8	0.094	<0.42	9.9	9.0	7.3	<0.20	<0.050	24.1
SEP3-B02@3"	3"	08/04/2025	2.0	57.8	0.099	<0.42	7.6	5.5	6.2	<0.20	<0.050	26.2

**Notes:**

(1) Standards for soil are taken from ECMC Table 915-1: Metals in Soils - Protection of Groundwater Soil Screening Level Concentrations (Effective January 15, 2021)

(2) Standards for soil are taken from ECMC Table 915-1: Metals in Soils - Residential Soil Screening Level Concentrations (Effective January 15, 2021)

ECMC = Colorado Energy & Carbon Management Commission

GSSL = Protection of Groundwater Soil Screening Level

RSSL = Residential Soil Screening Level

(<) = Analytical result is less than the indicated laboratory detection limit

Chromium (VI) = Hexavalent Chromium

mg/kg = milligrams per kilogram

**BOLD** = Analytical result is in exceedance of ECMC Table 915-1: Metals in Soils - Protection of Groundwater Soil Screening Level Concentrations

**BOLD** = Analytical result is in exceedance of ECMC Table 915-1: Metals in Soils - Residential Soil Screening Level Concentrations

*Italics* = Laboratory minimum detection limit exceeds the ECMC Table 915-1 Standard

**TABLE 5**  
**EDITH ANN-DUCKWORTH FACILITIES 21H-0268**  
**SOIL ANALYTICAL DATA - SOIL RECLAMATION**  
**CRESTONE PEAK RESOURCES OPERATING, LLC**



Soil Sample Location	Depth	Date	pH	SAR	EC (mmhos/cm)	Boron (mg/L)
<b>ECMC Soil Suitability for Reclamation<sup>(1)</sup></b>			<b>6 - 8.3</b>	<b>&lt; 6</b>	<b>&lt; 4</b>	<b>2</b>
SEP1-B01@3"	3"	08/04/2025	8.15	0.095	0.30	<0.25
SEP1-B02@3"	3"	08/04/2025	7.97	0.887	0.67	<0.25
SEP2-B01@3"	3"	08/04/2025	8.15	1.77	1.4	<0.25
SEP2-B02@3"	3"	08/04/2025	7.97	1.64	0.47	<0.25
SEP3-B01@3"	3"	08/04/2025	8.11	2.39	0.87	<0.25
SEP3-B02@3"	3"	08/04/2025	8.25	0.237	0.26	<0.25

**Notes:**

(1) Standards for soil are taken from ECMC Table 915-1: Soil Suitability for Reclamation (Effective January 15, 2021)

ECMC = Colorado Energy & Carbon Management Commission

(<) = Analytical result is less than the indicated laboratory detection limit

mmhos/cm = millimhos per centimeter

mg/L = milligrams per liter

pH = Potential of Hydrogen

SAR = Sodium Adsorption Ratio

EC = Electrical Conductivity

**BOLD** = Analytical result is in exceedance of ECMC Table 915-1: Soil Suitability for Reclamation Concentrations