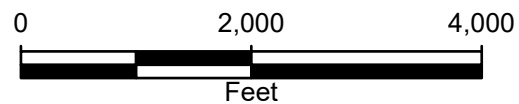


**Legend**

 Site Location



**FIGURE 1**  
**SITE LOCATION MAP**  
**MILLER FEDERAL 10-6-AL**  
**NWSE SEC 6-T2N-R66W**  
**WELD, COLORADO**

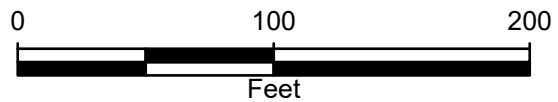




ESRI, HERE, Garmin

**Legend**

- Plugged and Abandoned Well
- Cardinal Direction Photo Locations  
- Cardinal Direction Photos Taken 150' from Well



**FIGURE 2**  
**SITE MAP**  
**MILLER FEDERAL 10-6-AL**  
**NWSE SEC 6-T2N-R66W**  
**WELD, COLORADO**



### FIGURE 3: PHOTOGRAPHIC LOG



Photograph 1: View facing north as required in Energy and Carbon Management Commission (ECMC) Rule 1004.  
Photo Taken from GPS 40.164648, -104.817713



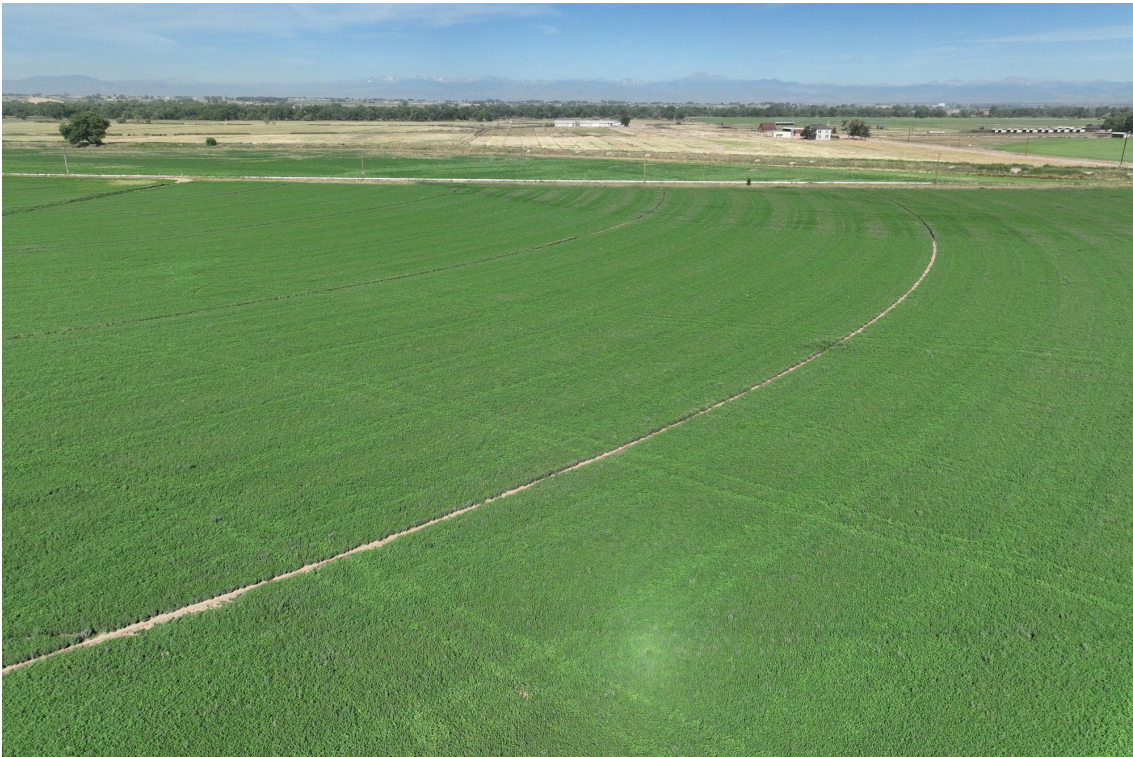
Photograph 2: View facing east as required in Energy and Carbon Management Commission (ECMC) Rule 1004.  
Photo Taken from GPS 40.164998, -104.818121



### FIGURE 3: PHOTOGRAPHIC LOG



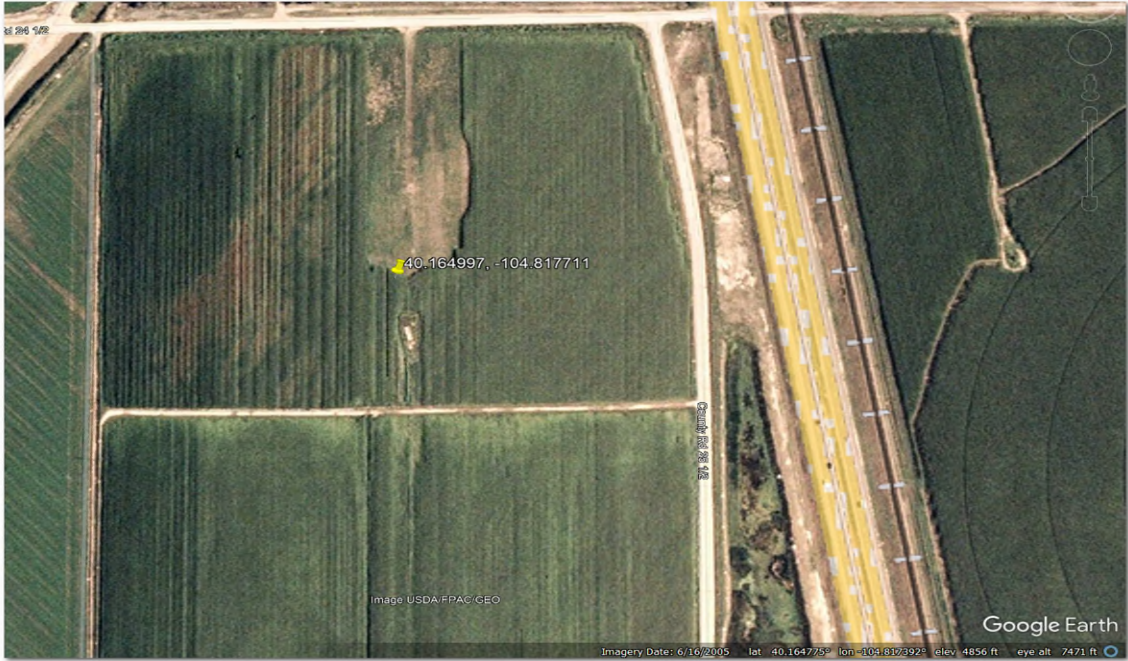
Photograph 3: View facing south as required in Energy and Carbon Management Commission (ECMC) Rule 1004.  
Photo Taken from GPS 40.165346, -104.817712



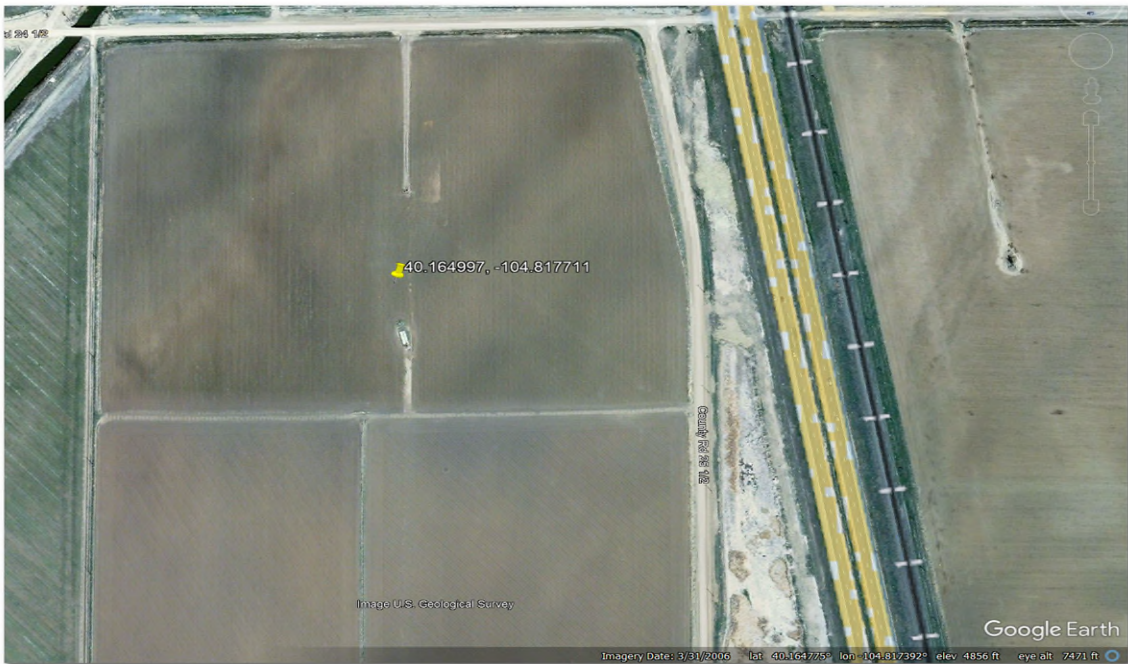
Photograph 4: View facing west as required in Energy and Carbon Management Commission (ECMC) Rule 1004.  
Photo Taken from GPS 40.164998, -104.817302



## Attachments: Historic Imagery



Imagery Date: June 16, 2005



Imagery Date: March 31, 2006

Site Name: Miller Federal 10-6 AL  
Imagery Source: Google Earth



## Attachments: Historic Imagery



Imagery Date: February 4, 2025

Site Name: Miller Federal 10-6 AL  
Imagery Source: Google Earth

Page 2 of 2

