



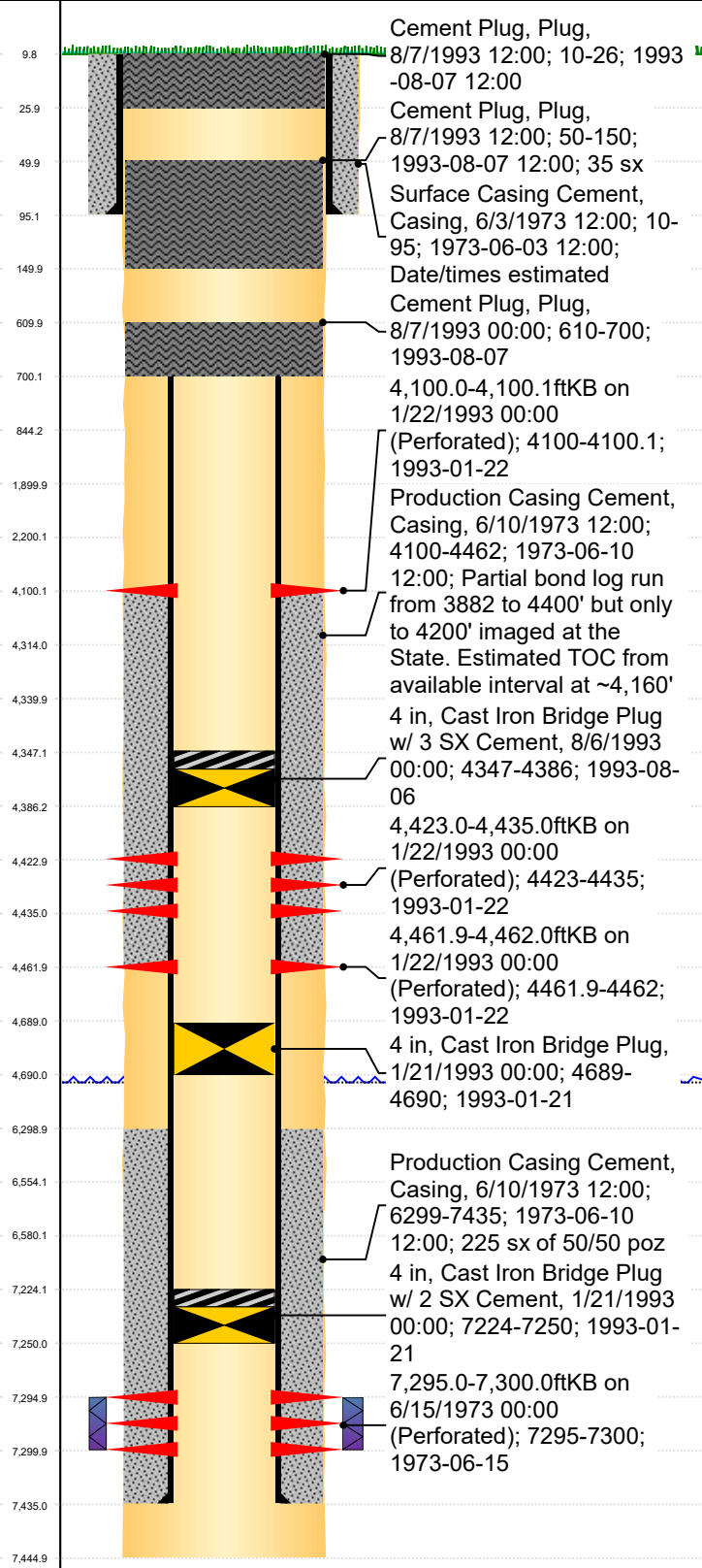
# PA Wellbore For State - Vertical

Well Name: Cuykendall-Lauck 1

Original Hole

MD  
(ftK  
B)

Vertical schematic (actual)



**Well Header**

Surface UWI 0512307705	Business Unit Rockies	Gov Auth Dist	Prod Tree Loc
Orig. KB to Gnd (ft) 10.00	Original Spud Date 6/2/1973	Abandon Date 8/6/1993	Well Sub-Status DA
Comment All information from the State Website.			

**Geologic Horizons**

Formation Name Fox Hills	Final Top MD (ftKB) 456.0
Formation Name Fox Hills Base	Final Top MD (ftKB) 744.0
Formation Name Pierre (Upper) Aquifer Base	Final Top MD (ftKB) 1,750.0

**Surface Location (Congressional)**

Qtr 3 NW	Qtr 4 NE	Section 18	Twnshp 2	Twnsh... N	Range 63	Rng E/... W	Latitude (°)	Longitude (°)
-------------	-------------	---------------	-------------	---------------	-------------	----------------	--------------	---------------

**Wellbore Sections**

Section Des	Hole Size (in)	Top Depth (ftKB)	Btm Depth (ftKB)
Surface	10 3/4	10.0	95.0
Production	7 7/8	95.0	7,445.0

**Casing Strings**

Csg Des	Run Date	OD (in)	Wt/Len (lb/ft)	Grade	Top Depth (MD) (ftKB)	Set Depth (MD) (ftKB)
Surface	6/3/1973	8 5/8	24.00	J-55	10	95
Production Casing	6/10/1973	4 1/2	10.50	J-55	10	7435

**Cement**

Des	Start Date	Top (ftKB)	Btm (ftKB)
Surface Casing Cement	6/3/1973	10.0	95.0
Production Casing Cement	6/10/1973	4,100.0	4,462.0
Production Casing Cement	6/10/1973	6,299.0	7,435.0
Cement Plug	8/7/1993	610.0	700.0
Cement Plug	8/7/1993	50.0	150.0
Cement Plug	8/7/1993	10.0	26.0

**Stim/Frac Summary**

Min Top Depth (ftKB) 7,295.0	Max Btm Depth (ftKB) 7,300.0
---------------------------------	---------------------------------

**Perforations**

Linked Zone	Date	Top Depth (ftKB)	Bottom Depth (ftKB)
Linked Zone Sussex, Original Hole	1/22/1993 00:00	4,100.0	4,100.1
Linked Zone Sussex, Original Hole	1/22/1993 00:00	4,423.0	4,435.0
Linked Zone Sussex, Original Hole	1/22/1993 00:00	4,461.9	4,462.0
Linked Zone DSand, Original Hole	6/15/1973 00:00	7,295.0	7,300.0

**Other In Hole**

Run Date	Des	Make	OD (in)	Top (ftKB)	Btm (ftKB)
1/21/1993	Cast Iron Bridge Plug w/ 2 SX Cement		4	7,224.0	7,250.0
1/21/1993	Cast Iron Bridge Plug		4	4,689.0	4,690.0
8/6/1993	Cast Iron Bridge Plug w/ 3 SX Cement		4	4,347.0	4,386.0

**Logs**

Date	Type	Depth Top (MD) (ftKB)	Btm (ftKB)