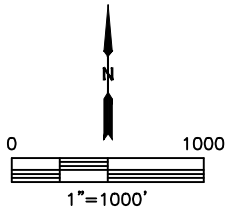
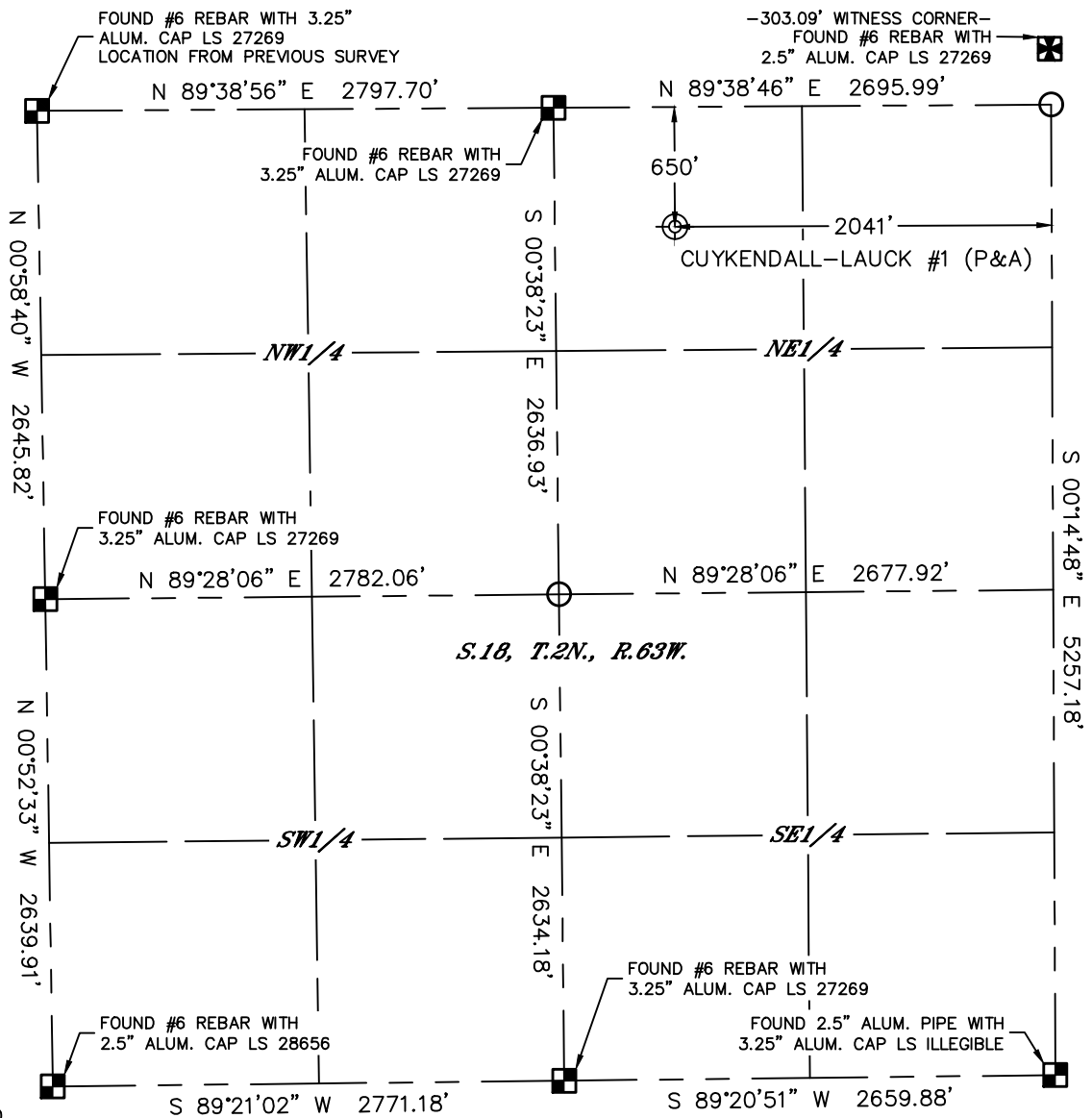




Lat40°, Inc. 6250 W. 10th Street, Unit 2, Greeley, CO 970-515-5294

PLUGGED AND ABANDONED WELL EXHIBIT CUYKENDALL-LAUCK #1

SECTION: 18
TOWNSHIP: 2N
RANGE: 63W
6TH. P.M.
WELD COUNTY, CO

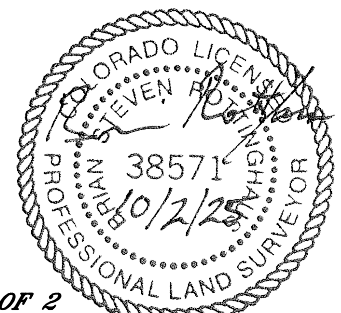


CLIENT: CHEVRON ROCKIES BUSINESS UNIT				LANDMAN: TED SCHULTZ			
INSTRUMENT OPERATOR: JESSE CORRAL				SURVEY DATE: 9/25/2025		SURFACE USE: RANGELAND	
SHL FOOTAGE		SHL LAT °	SHL LONG °	SHL PDOP	SHL ELEV (FT.)	SHL 1/4/1/4	SHL S-T-R
650	FNL	2041	FEL	40.14381	-104.47809	1.4	4888
DESCRIPTION: FOUND STRONG METAL DETECTOR RING AT NOTED POSITION. ALSO FOUND PIECES OF BROKEN 2" PIPES IN THE AREA.						NWNE	18-2-63

NOTE:

- 1) Bearings shown are Grid Bearings of the Colorado State Plane Coordinate System, North Zone, North American Datum 1983. The lineal dimensions as contained herein are based upon the "U.S. Survey Foot."
- 2) Distances to section lines measured at 90 degrees from said section lines.
- 3) Ground elevations are based on an observed GPS elevation (NAVD 1988 DATUM).
- 4) Latitude and Longitude shown are (NAD 83 DATUM).
- 5) Sectional data as shown hereon is from previous surveys and was not verified for this P&A Exhibit.
- 6) This map does not represent a boundary survey.

- LEGEND
- = ALIQUOT MONUMENT AS DESCRIBED
 - = CALCULATED POSITION
 - ⊗ = ABANDONED WELL



SHEET 1 OF 2

Brian S. Rottinghaus—On behalf of Lat40°, Inc.
Colorado Licensed Professional Land Surveyor No. 38571
DATE: 10/02/2025
PROJECT#: 2025319



Lat40°, Inc. 6250 W. 10th Street, Unit 2, Greeley, CO 970-515-5294

PLUGGED AND ABANDONED WELL EXHIBIT

CUYKENDALL-LAUCK #1

SECTION: 18
TOWNSHIP: 2N
RANGE: 63W
6TH. P.M.
WELD COUNTY, CO
DATE: 9/25/2025



VIEW NORTH



VIEW WEST



VIEW EAST



VIEW SOUTH