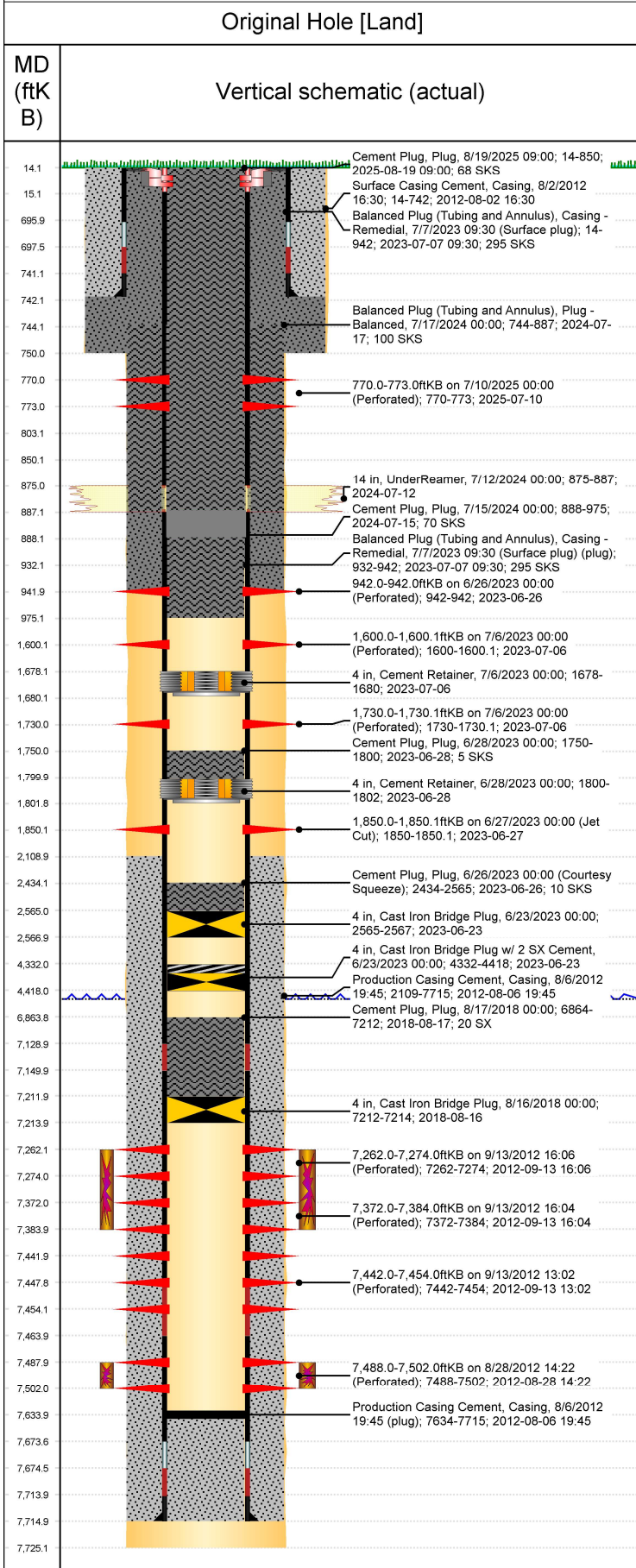




PA Wellbore For State - Vertical

Well Name: ADAMS D30-31D



Geologic Horizons	
Formation Name	FORT HAYS
Final Top MD (ftKB)	7,466.0
Formation Name	CODELL
Final Top MD (ftKB)	7,489.0
Surface Location (Congressional)	
Quarter 3	Quarter 4
NE	NW
Section	30
Twnshp	3
Twsh...	N
Range	64
Rng E...	W
Latitude (°)	40.202999763
Longitude (°)	-104.595098497
Wellbore Sections	
Section Des	Hole Size (in)
SURFACE	12 1/4
PRODUCTION	7 7/8
Top Depth (ftKB)	14.0
Btm Depth (ftKB)	750.0
750.0	7,725.0
Casing Strings	
Csg Des	Run Date
Surface	8/2/2012
Production Casing	8/6/2012
OD (in)	Wt/Len (lb/ft)
8 5/8	24.00
4 1/2	11.60
Grade	Top Depth (MD) (ftKB)
J-55	14
M-80	14
Set Depth (MD) (ftKB)	
742	7715
Cement	
Des	Start Date
Surface Casing Cement	8/2/2012
Production Casing Cement	8/6/2012
Cement Plug	8/17/2018
Courtesy Squeeze	6/26/2023
Cement Plug	6/28/2023
Surface plug	7/7/2023
Cement Plug	7/15/2024
Balanced Plug (Tubing and Annulus)	7/17/2024
Cement Plug	8/19/2025
Top (ftKB)	Btm (ftKB)
14.0	742.0
2,109.0	7,715.0
6,864.0	7,212.0
2,434.0	2,565.0
1,750.0	1,800.0
14.0	942.0
887.0	975.0
744.0	887.0
14.0	850.0
Stim/Frac Summary	
Min Top Depth (ftKB)	Max Btm Depth (ftKB)
7,488.0	7,502.0
Min Top Depth (ftKB)	Max Btm Depth (ftKB)
7,262.0	7,384.0
Perforations	
Linked Zone	Date
	7/10/2025 00:00
Top Depth (ftKB)	Bottom Depth (ftKB)
770.0	773.0
Linked Zone	Date
	6/26/2023 00:00
Top Depth (ftKB)	Bottom Depth (ftKB)
942.0	942.0
Linked Zone	Date
	7/6/2023 00:00
Top Depth (ftKB)	Bottom Depth (ftKB)
1,600.0	1,600.1
Linked Zone	Date
	7/6/2023 00:00
Top Depth (ftKB)	Bottom Depth (ftKB)
1,730.0	1,730.1
Linked Zone	Date
	6/27/2023 00:00
Top Depth (ftKB)	Bottom Depth (ftKB)
1,850.0	1,850.1
Linked Zone	Date
	9/13/2012 16:06
Top Depth (ftKB)	Bottom Depth (ftKB)
7,262.0	7,274.0
Linked Zone	Date
	9/13/2012 16:04
Top Depth (ftKB)	Bottom Depth (ftKB)
7,372.0	7,384.0
Linked Zone	Date
	9/13/2012 13:02
Top Depth (ftKB)	Bottom Depth (ftKB)
7,442.0	7,454.0
Linked Zone	Date
	8/28/2012 14:22
Top Depth (ftKB)	Bottom Depth (ftKB)
7,488.0	7,502.0
Other In Hole	
Run Date	Des
8/16/2018	Cast Iron Bridge Plug
6/23/2023	Cast Iron Bridge Plug w/ 2 SX Cement
6/23/2023	Cast Iron Bridge Plug
6/28/2023	Cement Retainer
7/6/2023	Cement Retainer
7/12/2024	UnderReamer
7/12/2024	
OD (in)	Top (ftKB)
4	7,212.0
4	4,332.0
4	2,565.0
4	1,800.0
4	1,678.0
14	875.0
4	887.0
Btm (ftKB)	
7,214.0	4,418.0
2,567.0	1,802.0
1,680.0	1,680.0
887.0	887.0
887.0	887.0
Logs	
Date	Type
8/5/2012	LOGS WERE NOT RUN
8/28/2012	CBL/CCL/GR
2/21/2017	GYRO
Depth Top (MD) (ftKB)	Btm (ftKB)
1,335	7,633.0
0	7,400.0