



**RADIAL BOND LOG
GAMMA RAY
CCL / VDL / MAP**

Company CHEVRON
Well ADAMS D30-31D
Field WATTENBERG - 90750
County WELD
State COLORADO
Country U.S.A.

Company CHEVRON
Well ADAMS D30-31D
Field WATTENBERG - 90750
County WELD
State COLORADO
Country U.S.A.

Location: SHL: 154' FNL & 2136' FWL NENW
BHL: 1200' FNL & 225' FWL NWNW
SEC 30 TWP 3N RGE 64W
APL #: 05-123-35675
Permanent Datum Ground Level Elevation 4782'
Log Measured From Kelly Bushing 14'
Drilling Measured From Kelly Bushing 14'
Other Services
K.B. 4796'
D.F. 4795'
G.L. 4782'

Date	July 9, 2025						
Run Number	1						
Depth Driller	7715'						
Depth Logger	850'						
Bottom Logged Interval	842'						
Top Log Interval	Surface						
Open Hole Size	7-7/8"						
Type Fluid	Fresh Water						
Density / Viscosity	8.3#						
Max. Recorded Temp.	N/A						
Estimated Cement Top	N/A						
Time Well Ready	N/A						
Time Logger on Bottom	N/A						
Equipment Number	DSSHSR20-003						
Location	Milliken, CO						
Recorded By	J. Michael						
Witnessed By	Mr. Luis Lupercio						
Borehole Record							
Run Number	Bit	From	To	Size	Weight	From	To
Casing Record							
Surface String	8-5/8"	24#	J-55	Surface	Surface	742'	Bottom
Prot. String							
Production String	4-1/2"	11.6#	M80	Surface	Surface	7715'	
Liner							

<<< Fold Here >>>


All interpretations are opinions based on inferences from electrical or other measurements and we cannot and do not guarantee the accuracy or correctness of any interpretation, and we shall not, except in the case of gross or willful negligence on our part, be liable or responsible for any loss, costs, damages, or expenses incurred or sustained by anyone resulting from any interpretation made by any of our officers, agents or employees. These interpretations are also subject to our general terms and conditions set out in our current Price Schedule.

Comments

NO CORRELATION LOG AVAILABLE

RBL LOG 1: 850' - SURFACE w/ NO PRESSURE. FLUID LOOKS TO BE GASEOUS AND UNSETTLED IN SP

RBL LOG 2: 850' - SURFACE w/ 1000psi APPLIED TO LOG WHILE LOGGING

Sensor	Offset (ft)	Schematic	Description	Length (ft)	O.D. (in)	Weight (lb)
			Cable_Head-1_7/16 Titan 1 7/16" Cable Head	1.02	1.44	3.31

			Centralizers-Sondex PRC 2.75" Roller Centralizers Tekco 2 3/4" Adjustable Centralizer	3.00	2.75	25.00
CCL	0.00					
TCF	0.00					
GRHV	0.94					
GR	0.94					
			DSS_HSR_ELE-DSS_HSR_20_ELE (HSR20 0000) DSS 2 3/4" HSR Bond tool - Electronics Module	4.81	2.75	61.00
ROTV	4.10					
THV	4.10					
INTEMP	4.10					
PNEG	4.10					
PPOS	4.10					
WVFS8	6.09					
WVFS7	6.09					
WVFS6	6.09					
WVFS5	6.09					
WVFS4	6.09					
WVFS3	6.09		DSS_HSR_SND-DSS_HSR_20_SND (HSR20 0000) DSS 2 3/4" HSR Bond tool - Sonde Module	7.70	2.75	86.00
WVFS1	6.09					
WVFCAL	6.59					
WVF3FT	6.59					
WVF5FT	7.59					
TEMP	11.67					
WVFSYNC	11.80					
			Centralizers-Sondex PRC 2.75" Roller Centralizers Tekco 2 3/4" Adjustable Centralizer	3.00	2.75	25.00

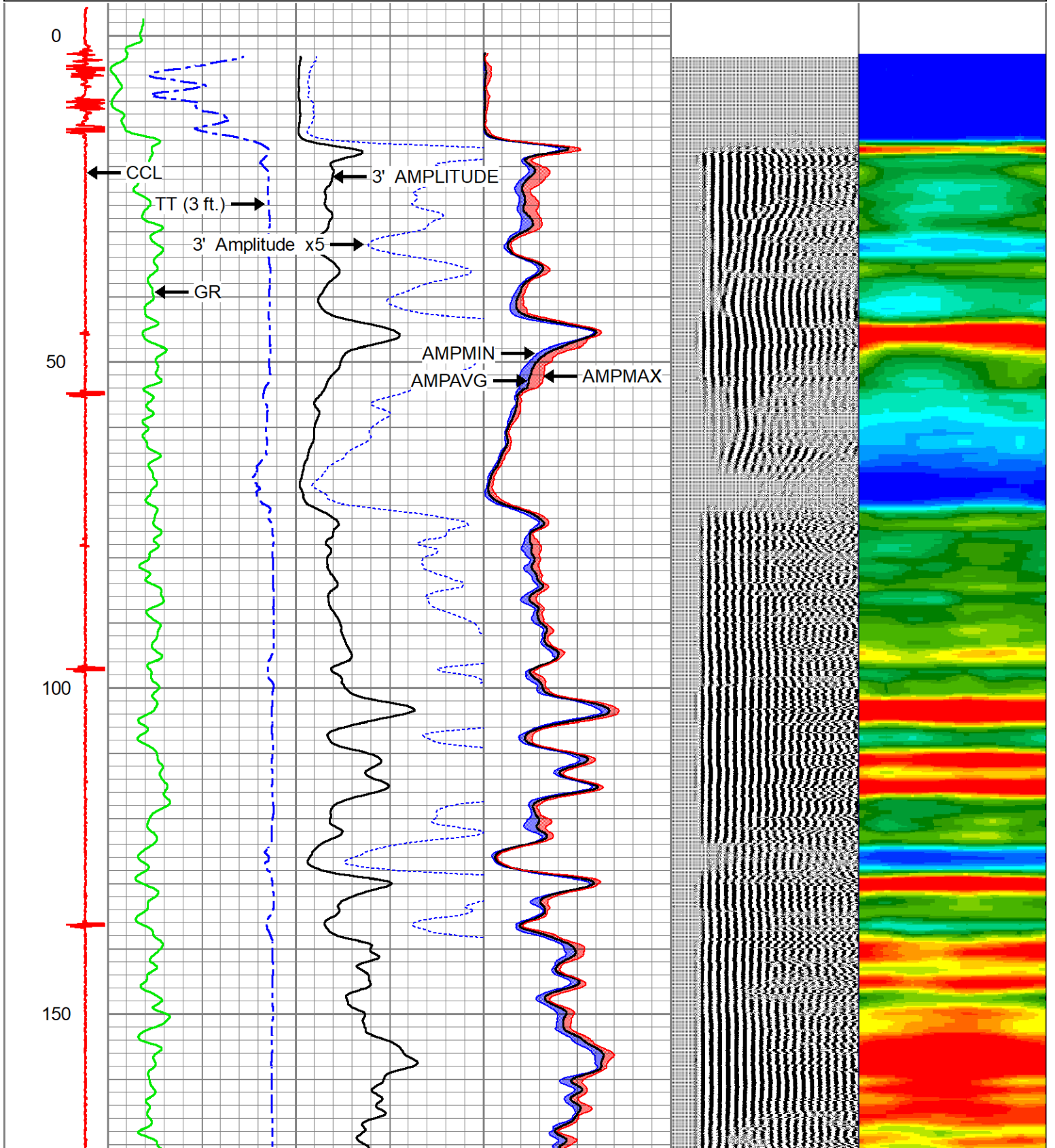
Dataset: adams d30-31d.db: WATTENBERG-90750/ADAMS_D30-31D/DSSHSR20-003/RBL.1
 Total length: 19.52 ft
 Total weight: 200.31 lb
 O.D.: 2.75 in

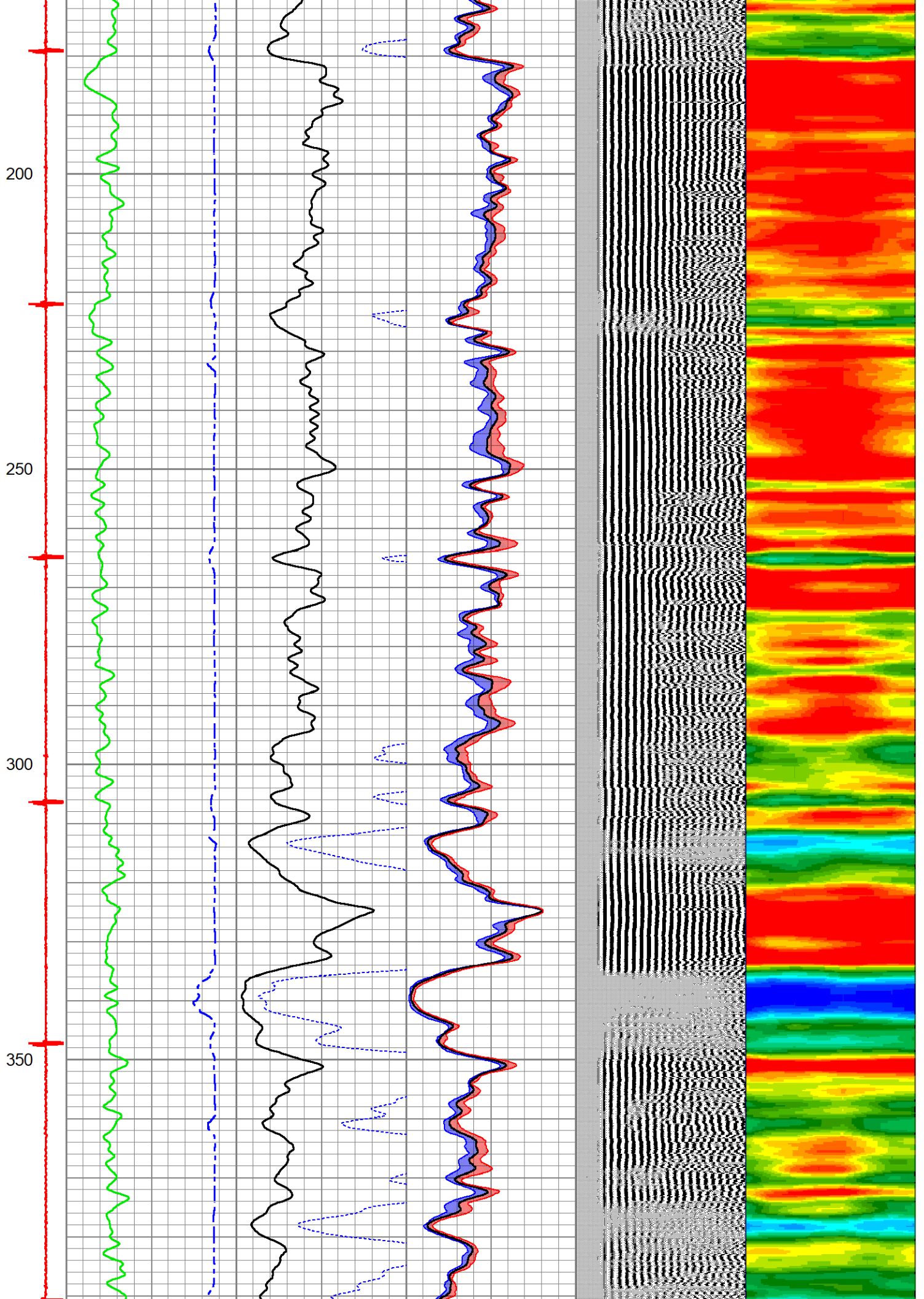


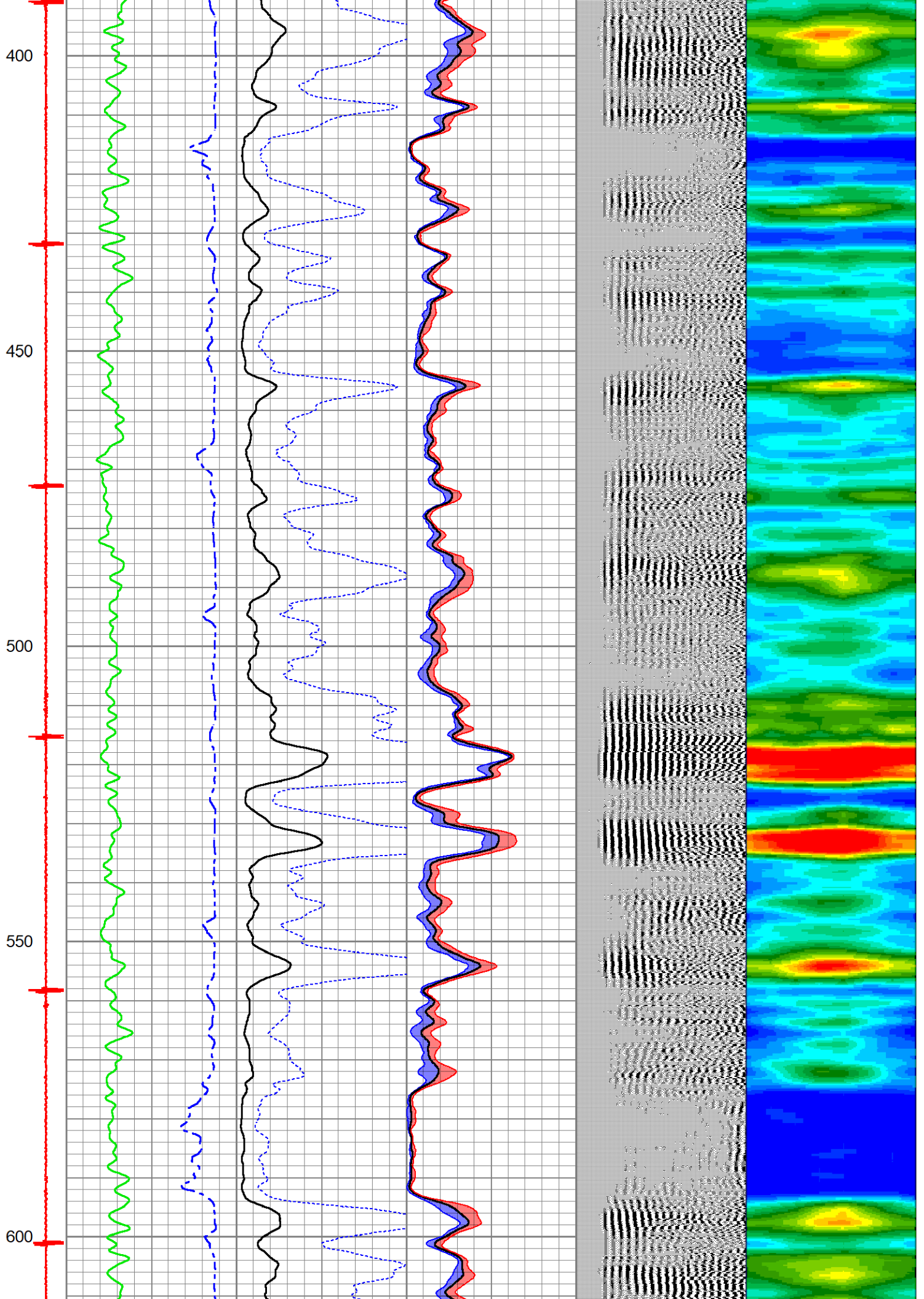
NO PRESSURE

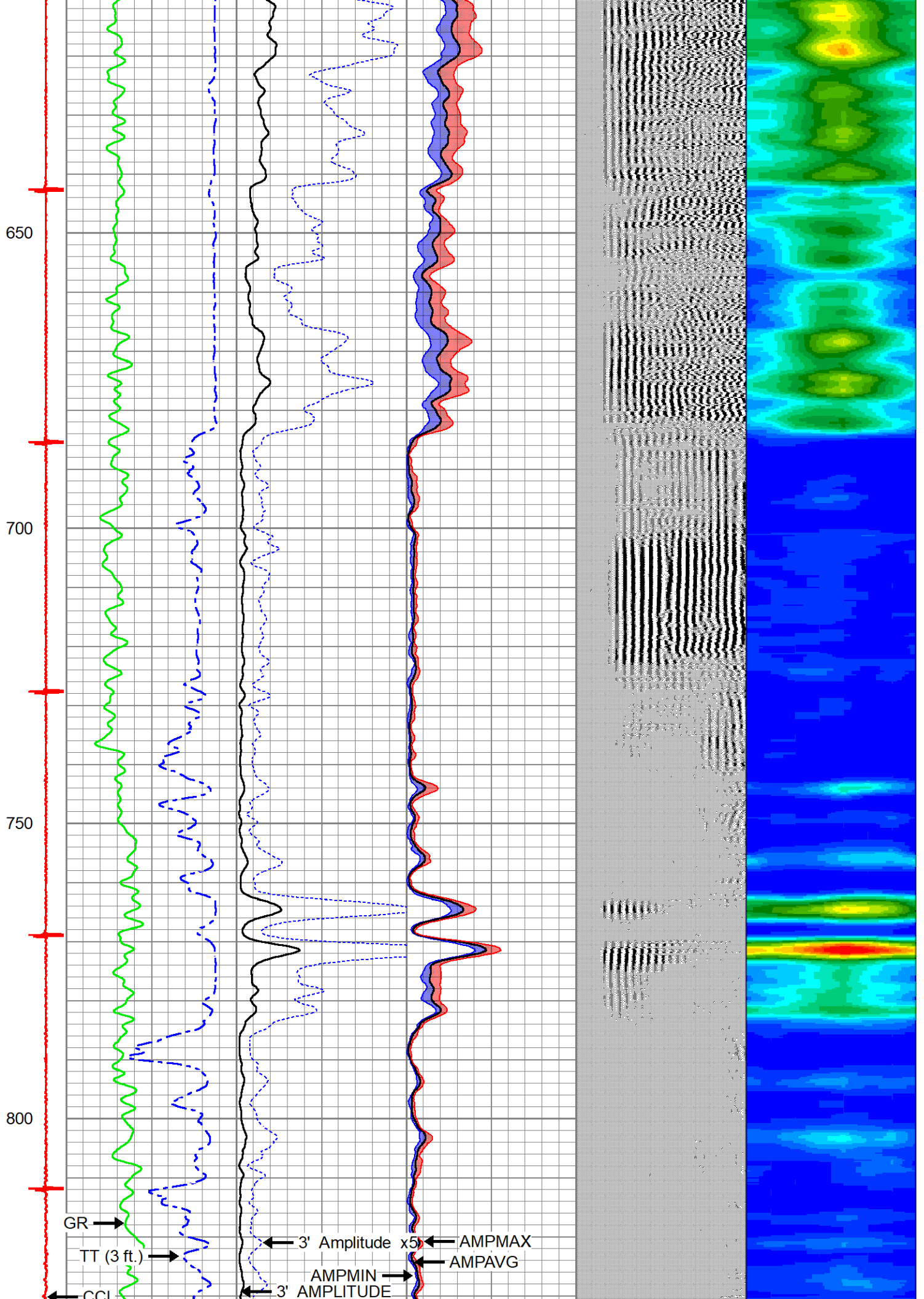
Database File adams d30-31d.db
 Dataset Pathname WATTENBERG-90750/ADAMS_D30-31D/DSSHSR20-003/RBL.1
 Presentation Format ranger_dss_radial
 Dataset Creation Wed Jul 09 13:42:56 2025
 Charted by Depth in Feet scaled 1:240

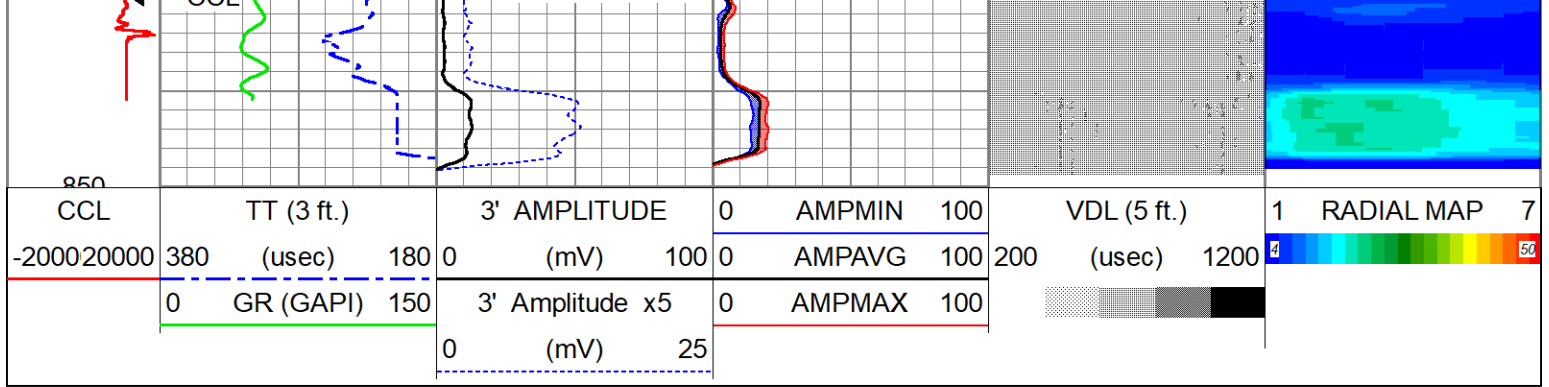
CCL	TT (3 ft.)	3' AMPLITUDE	0	AMPMIN	100	VDL (5 ft.)	1	RADIAL MAP	7
-200020000	380 (usec) 180	0 (mV) 100	0	AMPAVG	100	200 (usec) 1200	4		50
	0 GR (GAPI) 150	3' Amplitude x5	0	AMPMAX	100				
		0 (mV) 25							





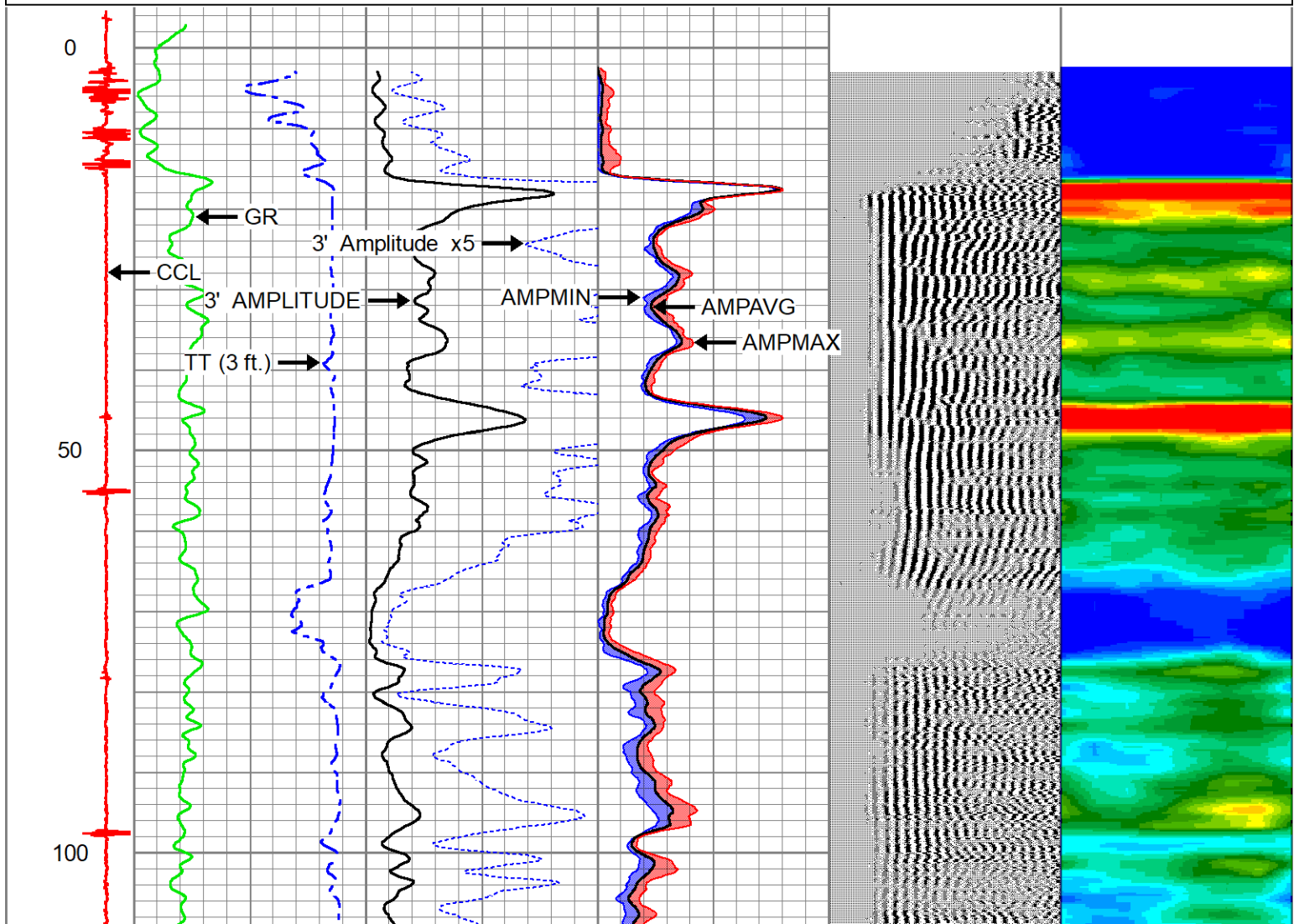
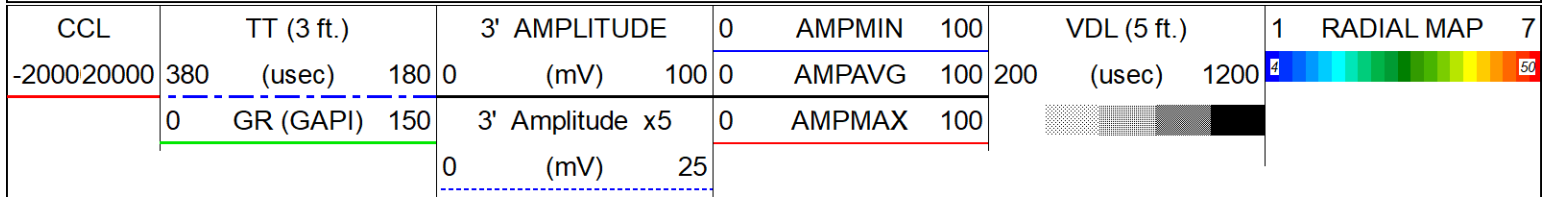


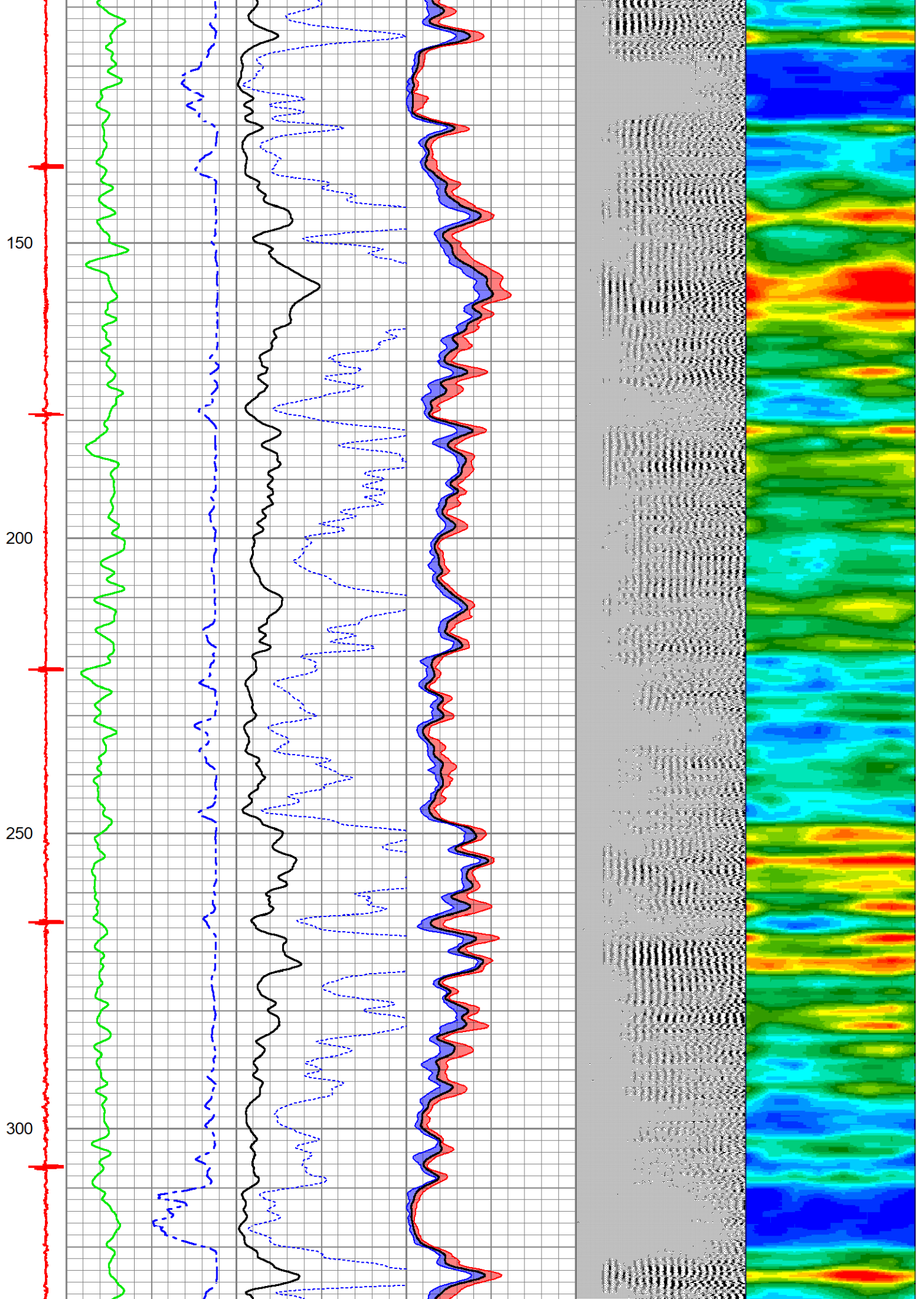


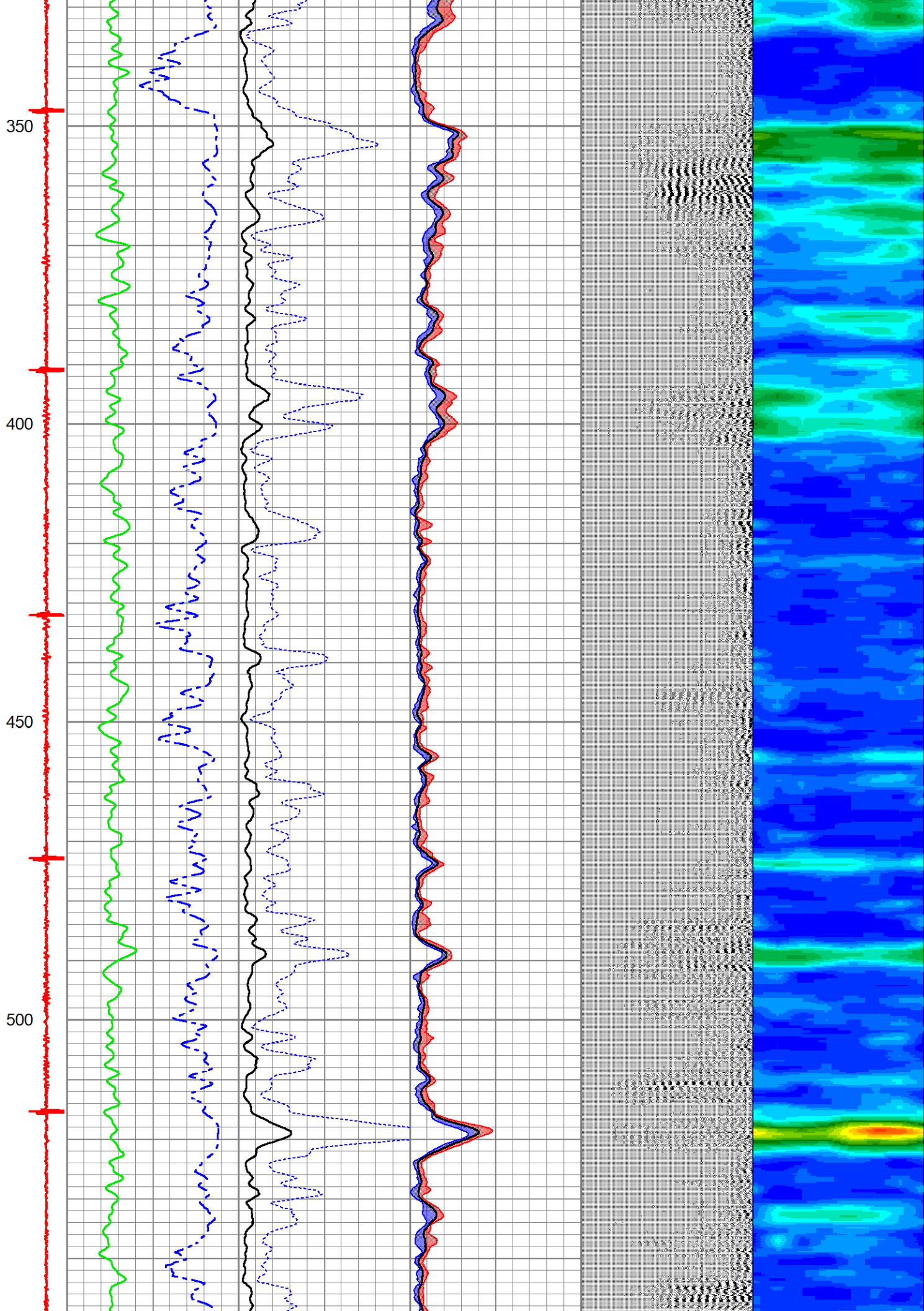


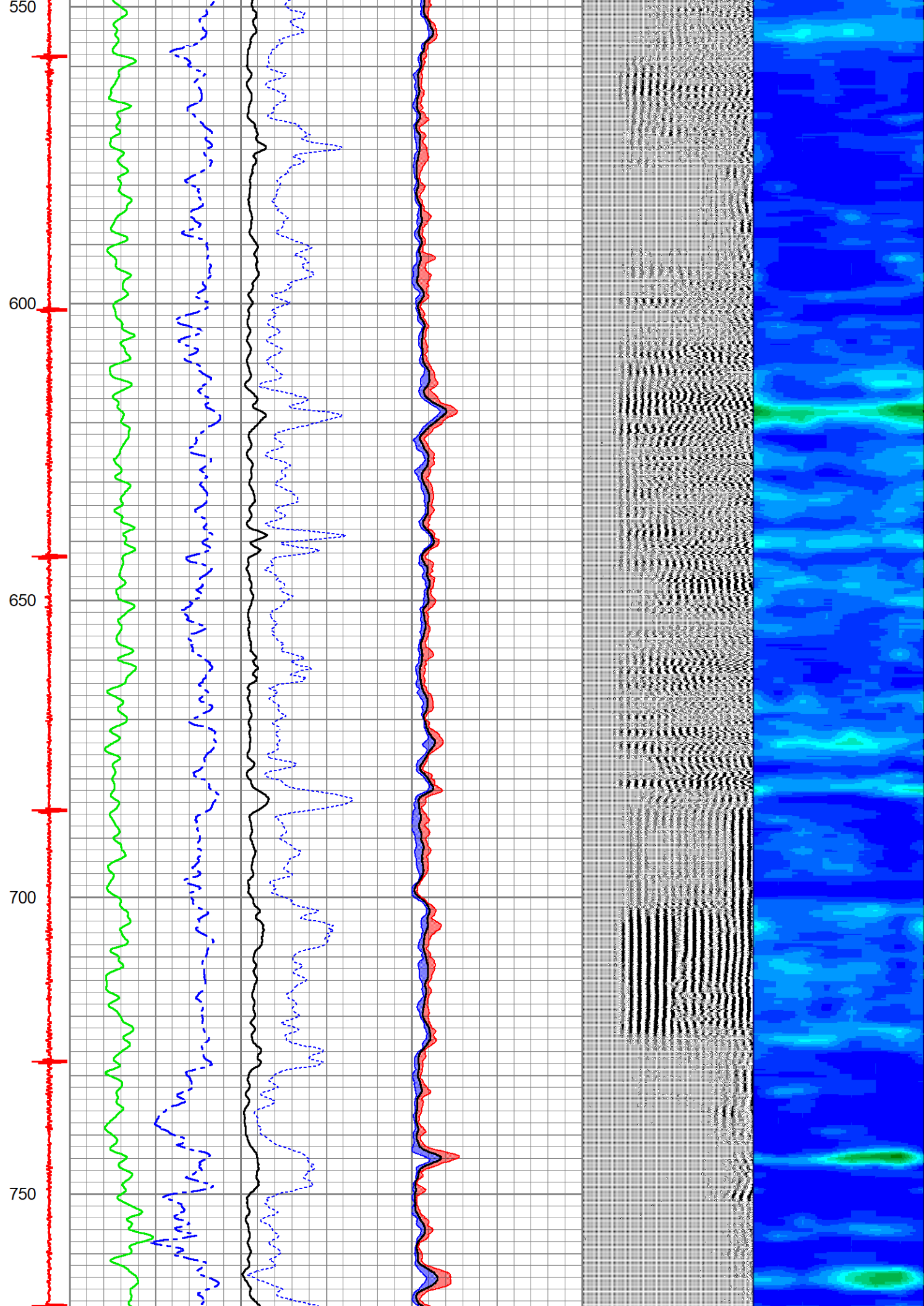
w/ 1000psi

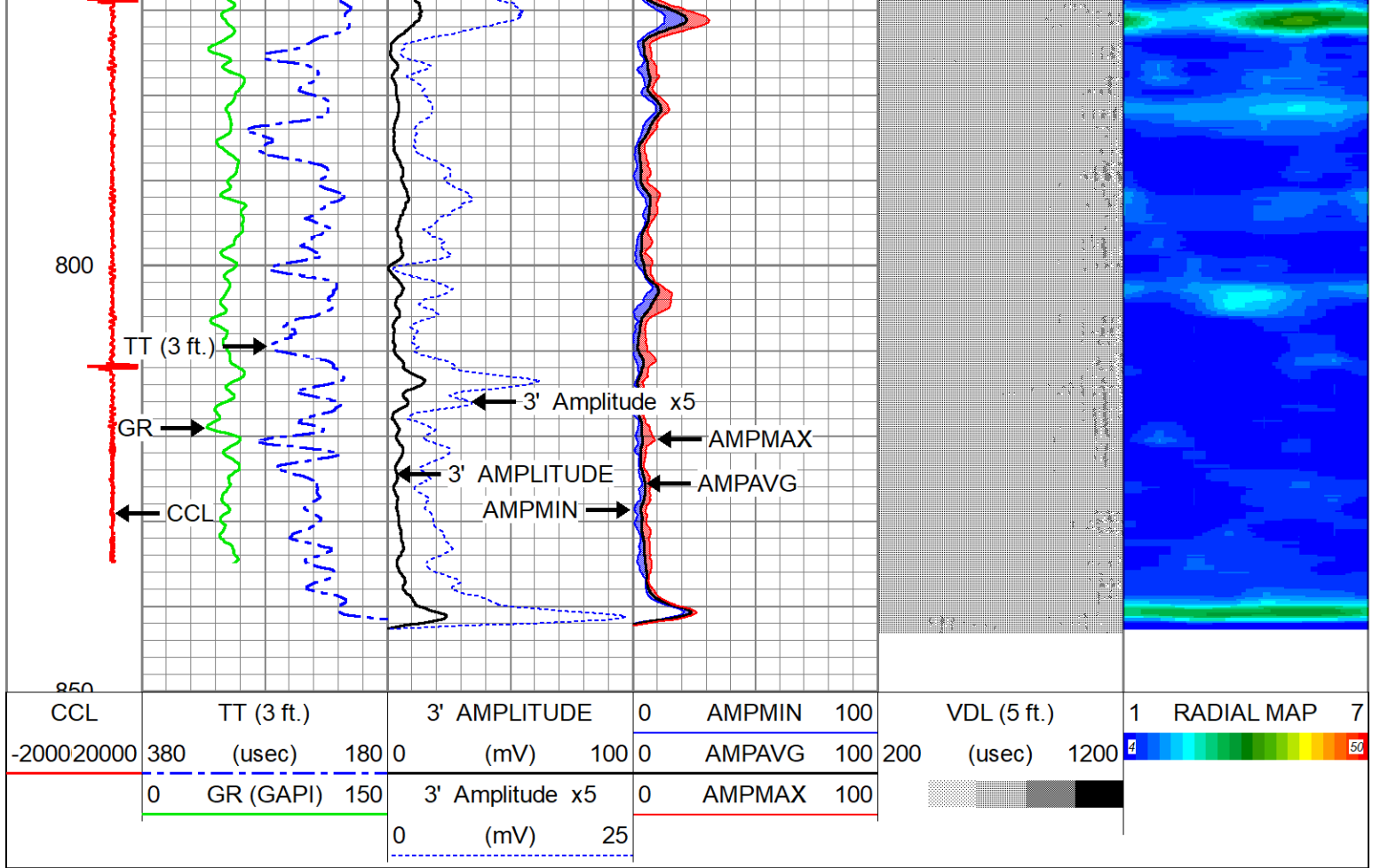
Database File adams d30-31d.db
 Dataset Pathname WATTENBERG-90750/ADAMS_D30-31D/DSSHSR20-003/RBL_W_PSI.1
 Presentation Format ranger_dss_radial
 Dataset Creation Wed Jul 09 13:44:03 2025
 Charted by Depth in Feet scaled 1:240











Company	CHEVRON	
Well	ADAMS D30-31D	
Field	WATTENBERG - 90750	
County	WELD	
State	COLORADO	
		Country U.S.A.