



Company CHEVRON
Well ADAMS D30-31D
Field WATTENBERG
County WELD **State** CO

Location: API #: 05-123-35675
 SEC 30 TWP 3 RGE 64
 Permanent Datum KB Elevation 4,782'
 Log Measured From KB
 Drilling Measured From KB

Company CHEVRON
Well ADAMS D30-31D
Field WATTENBERG
County WELD
State CO

Date 6-28-23
Run Number ONE
Depth Driller 7,725'
Depth Logger 1,800'
Bottom Logged Interval 1,800'
Top Log Interval SURFACE
Open Hole Size 12.25"
Type Fluid WATER
Density / Viscosity N/A
Max. Recorded Temp. N/A
Estimated Cement Top N/A
Time Well Ready 11:30
Time Logger on Bottom 12:00
Equipment Number 425
Location RIG 12
Recorded By ZION DIONNE
Witnessed By DERICK POWELL

Borehole Record				Tubing Record			
Run Number	Bit	From	To	Size	Weight	From	To

	Size	Wgt/Ft	Top	Bottom
Casing Record				
Surface String	8 5/8"	24#	SURFACE	742'
Prot. String				
Production String	4.5"	11.6#	SURFACE	7,715'
Liner				

<<< Fold Here >>>

All interpretations are opinions based on inferences from electrical or other measurements and we cannot and do not guarantee the accuracy or correctness of any interpretation, and we shall not, except in the case of gross or willful negligence on our part, be liable or responsible for any loss, costs, damages, or expenses incurred or sustained by anyone resulting from any interpretation made by any of our officers, agents or employees. These interpretations are also subject to our general terms and conditions set out in our current Price Schedule.

Comments

 LOG RAN PER CUSTOMER REQUEST
 DEPTH REFERENCED TO KB
 ZERO PRESSURE APPLIED

 MAIN PASS 1,800'-SURFACE

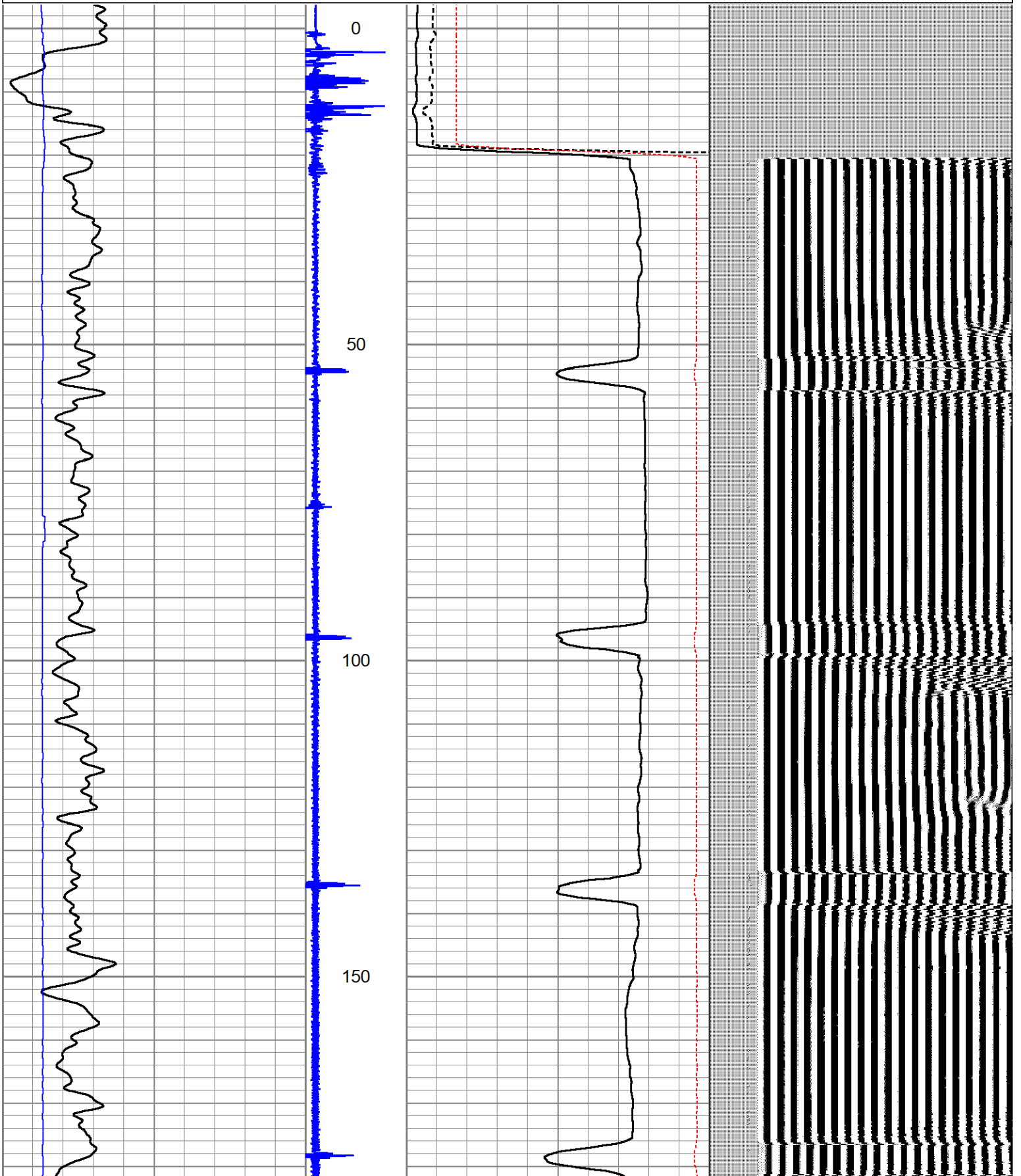
 THANK YOU FOR USING A-PLUS P&A LLC

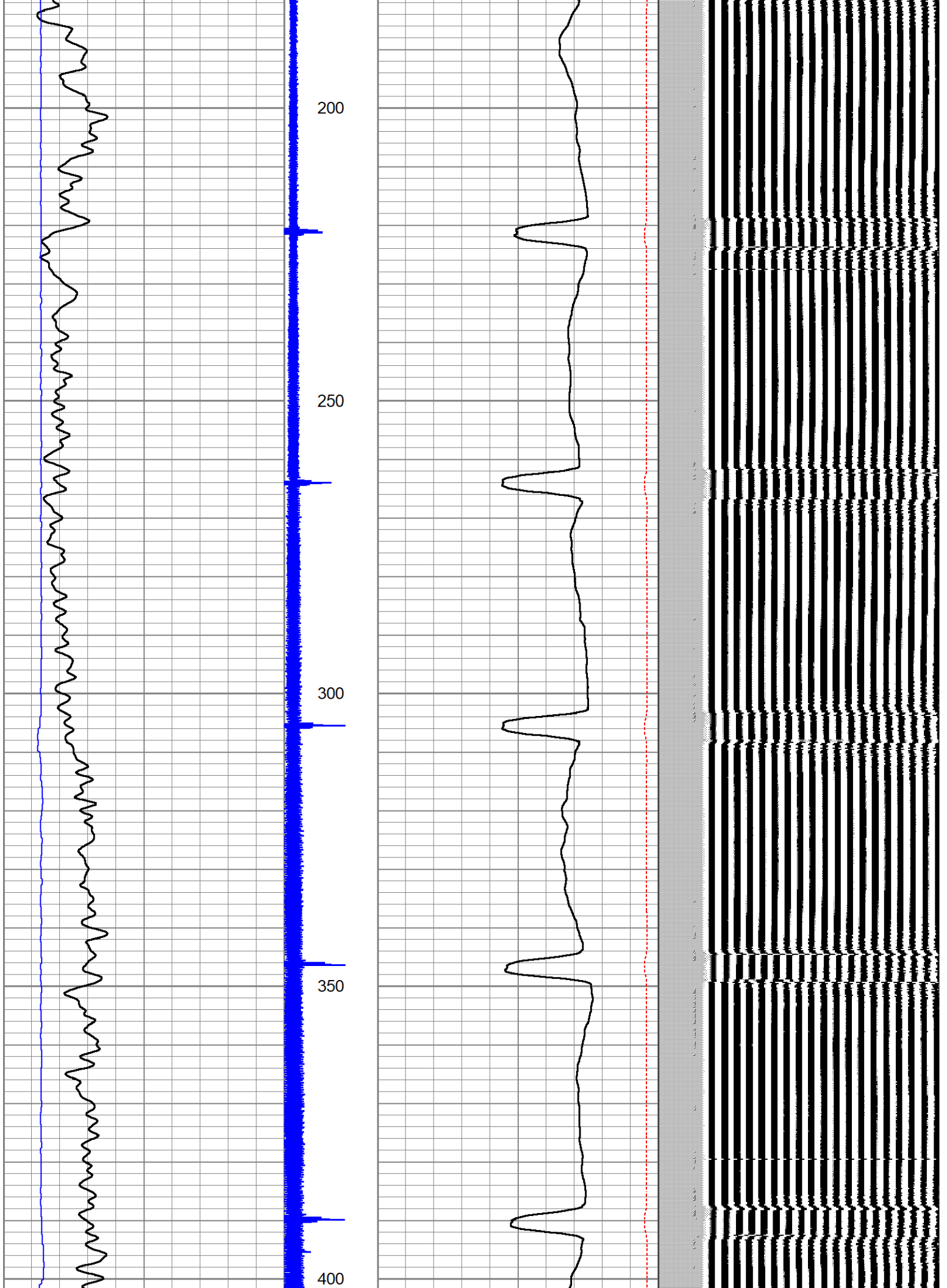


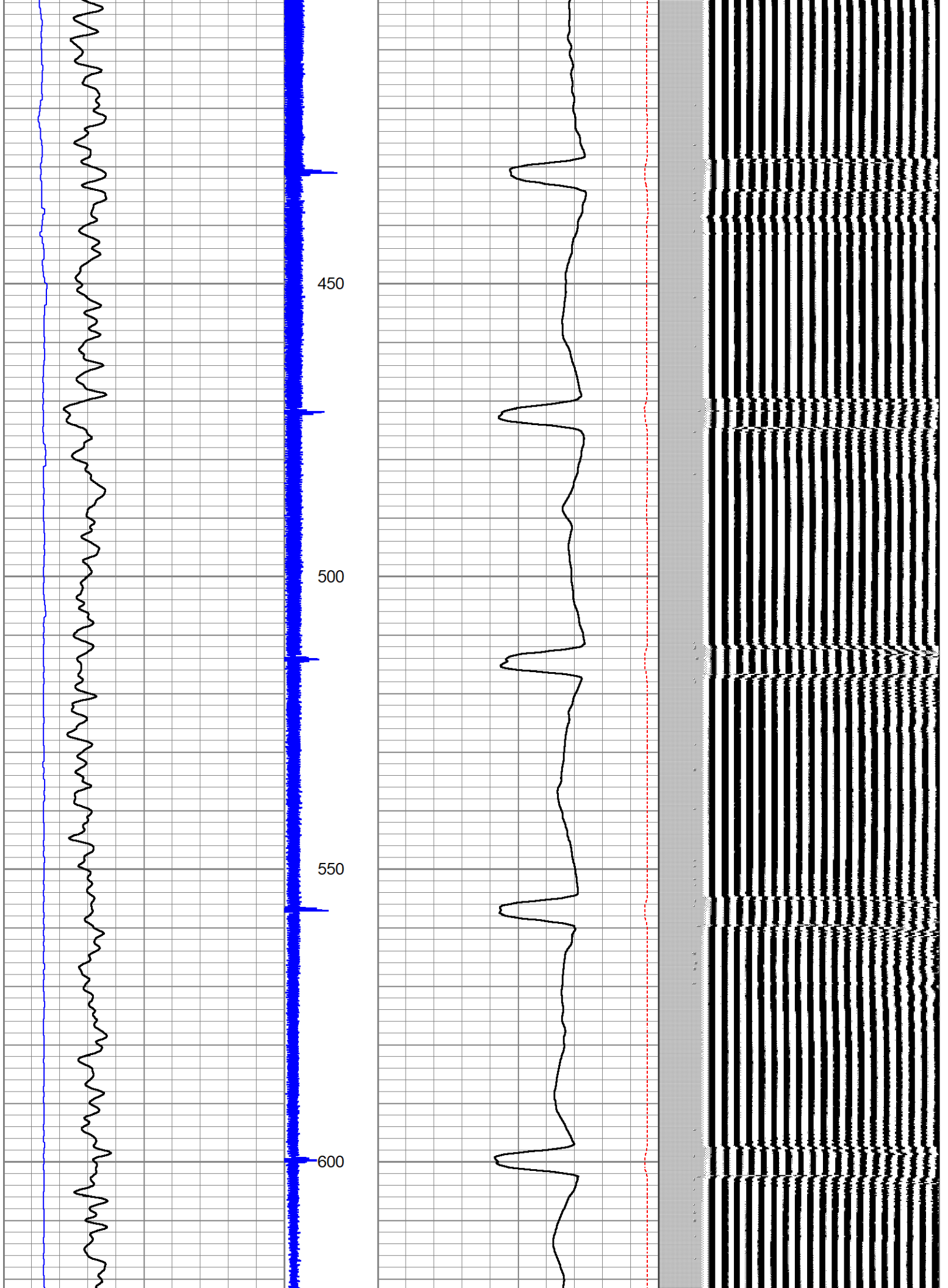
MAIN PASS

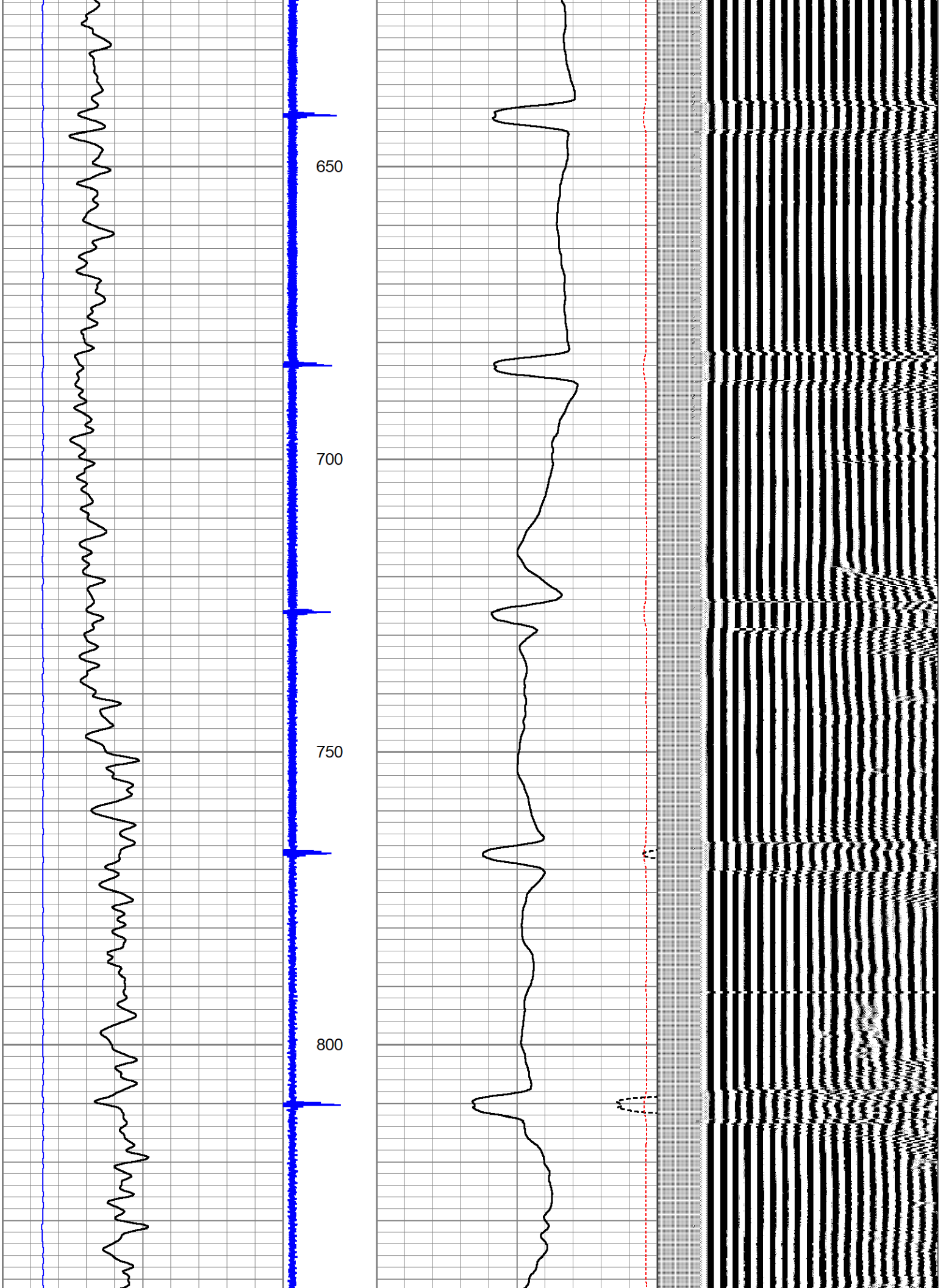
Database File 6-28-23.db
 Dataset Pathname pass9
 Presentation Format cbl_dr
 Dataset Creation Wed Jun 28 11:59:37 2023
 Charted by Depth in Feet scaled 1:240

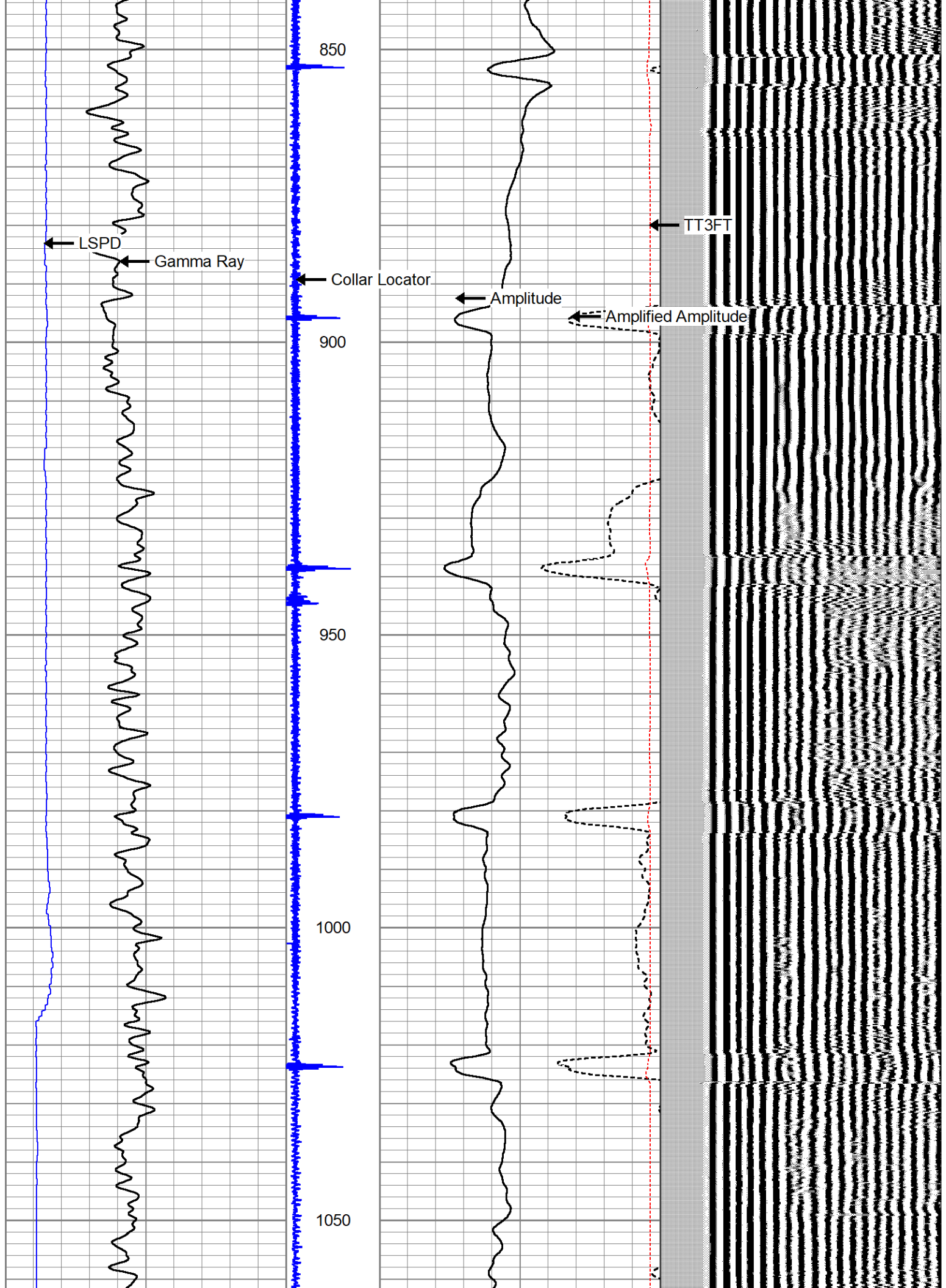
0	Gamma Ray (GAPI)	250	Collar Location	0	Amplified Amplitude (mV)	40	200	VDL (usec)	1200
-80	LSPD (ft/min)	80	-1	9	Amplitude (mV)	100			
					1200	TT3FT (usec)	200		

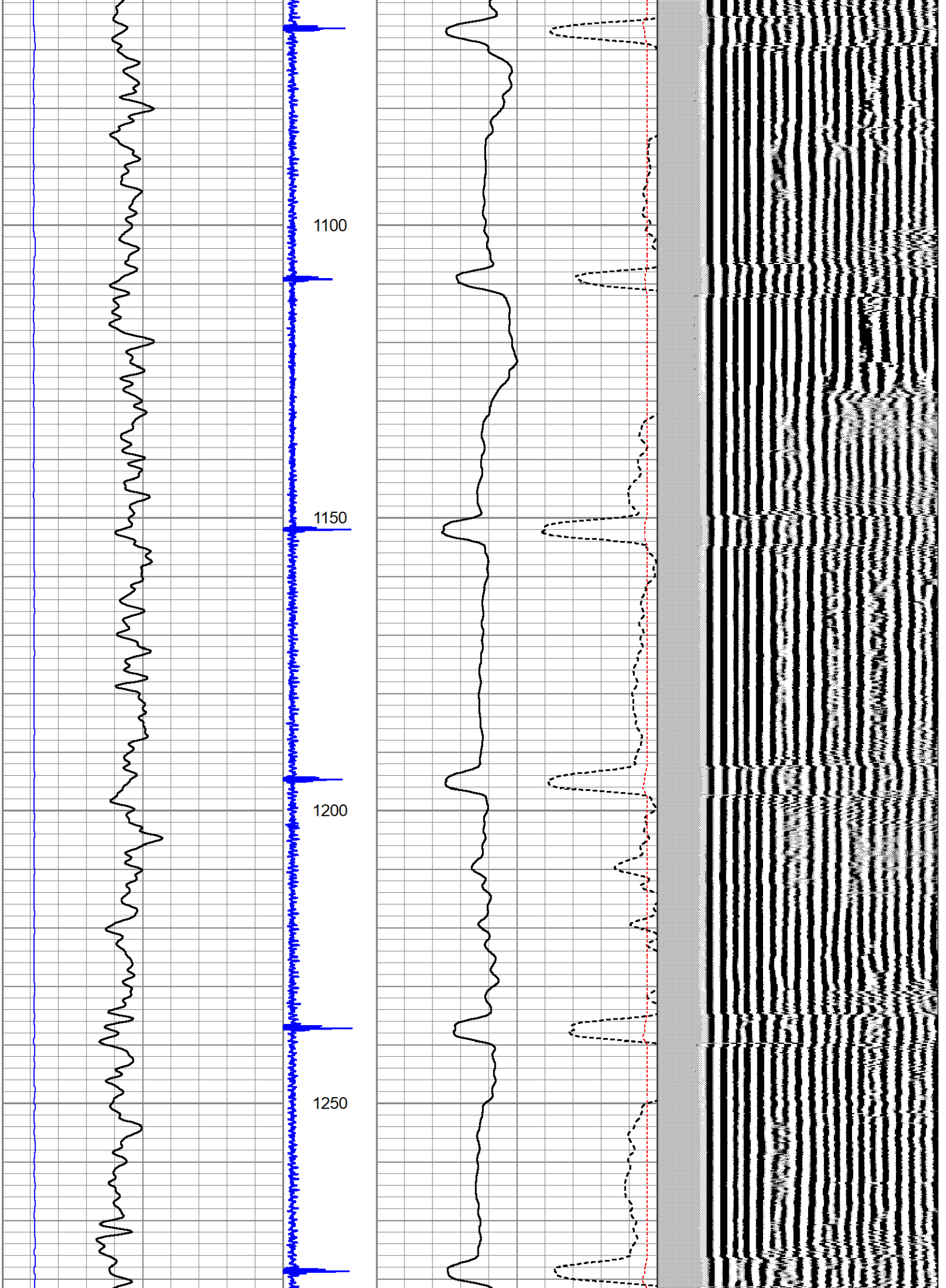


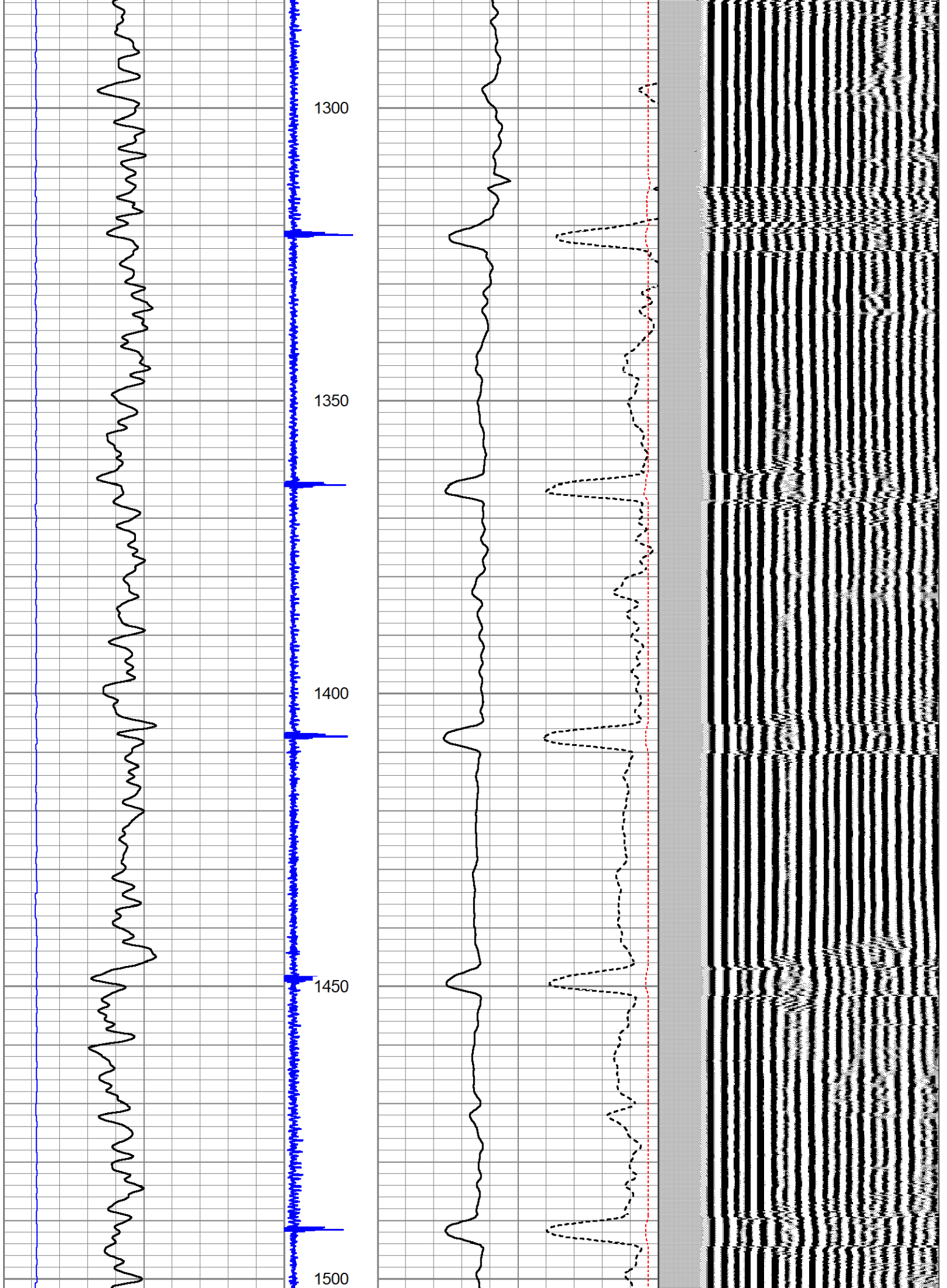


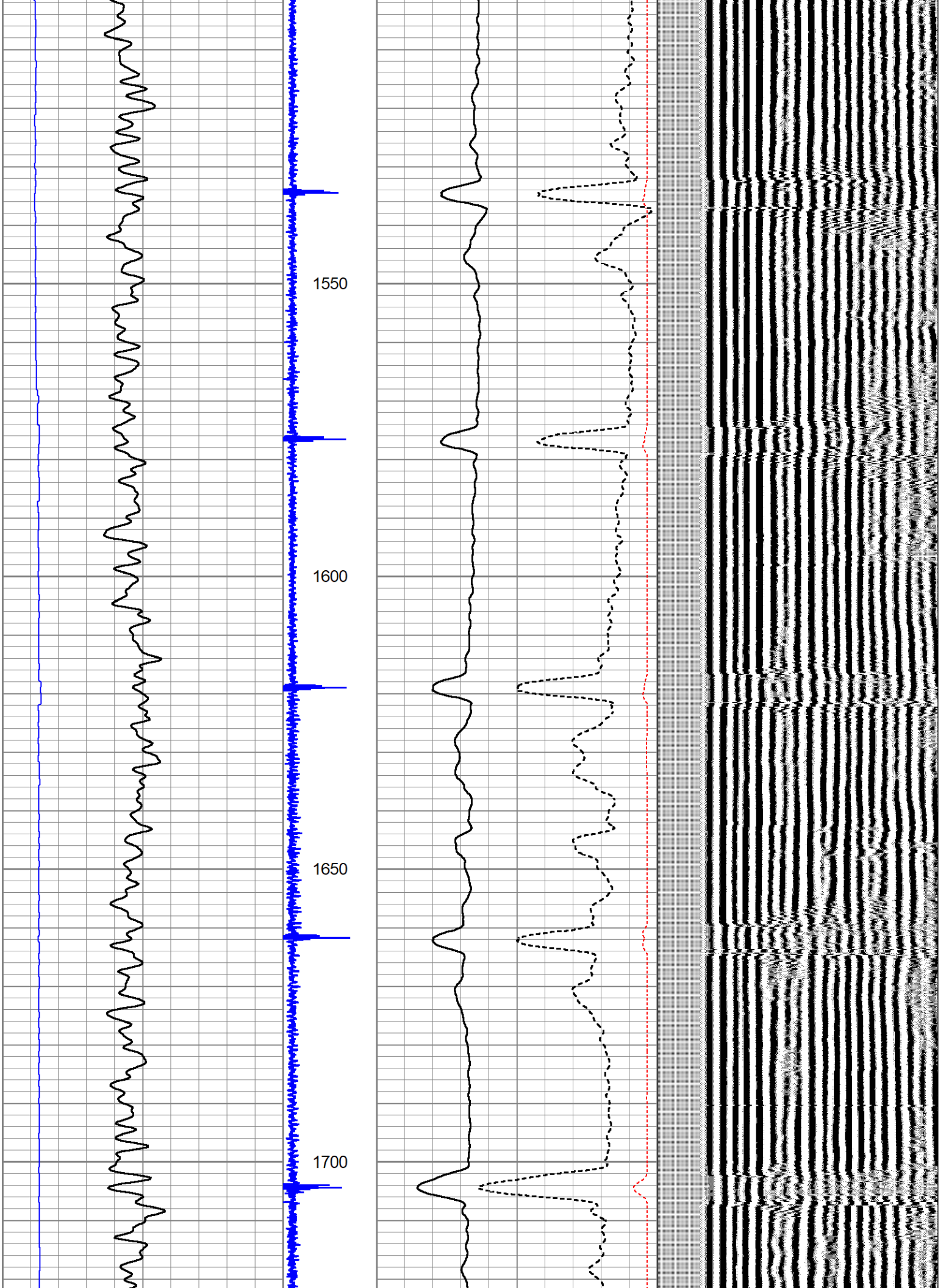


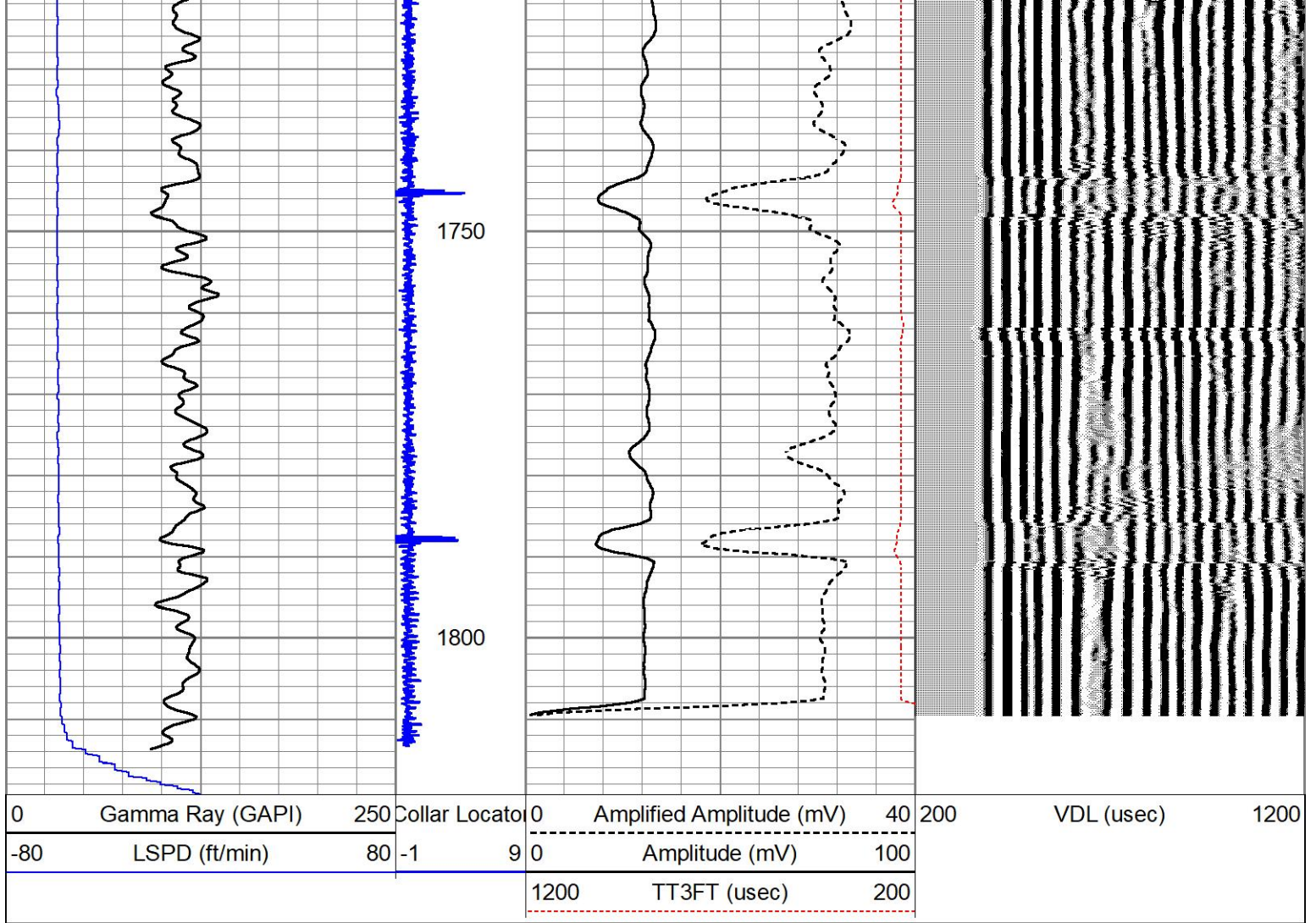






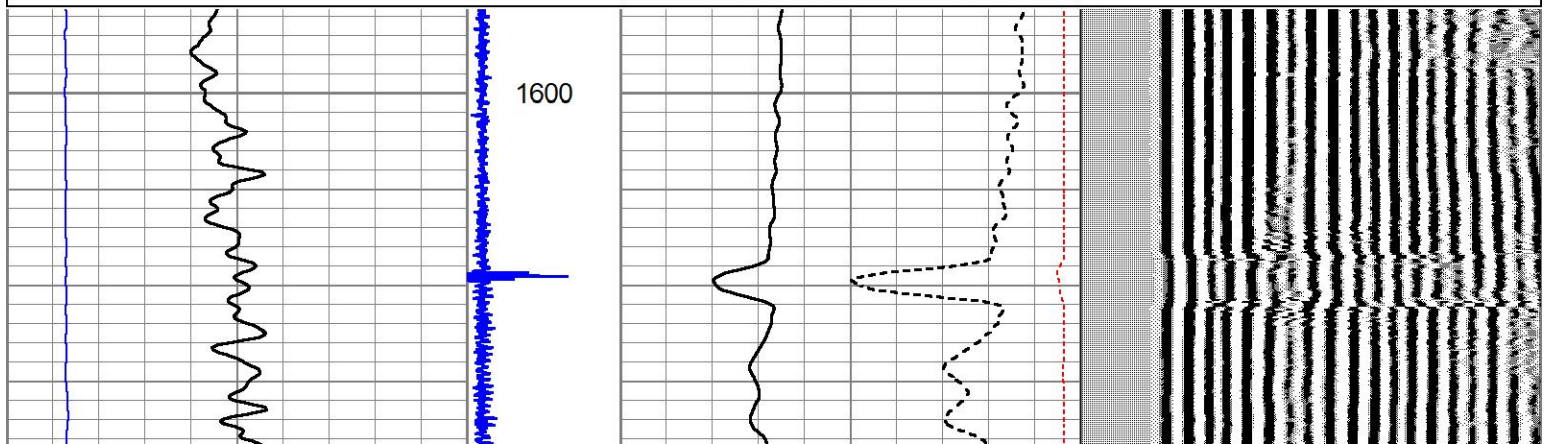
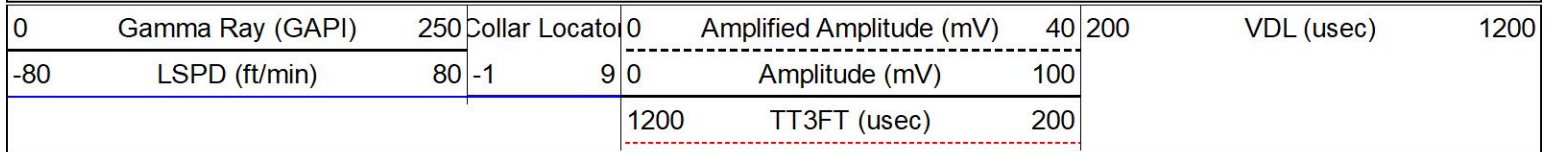


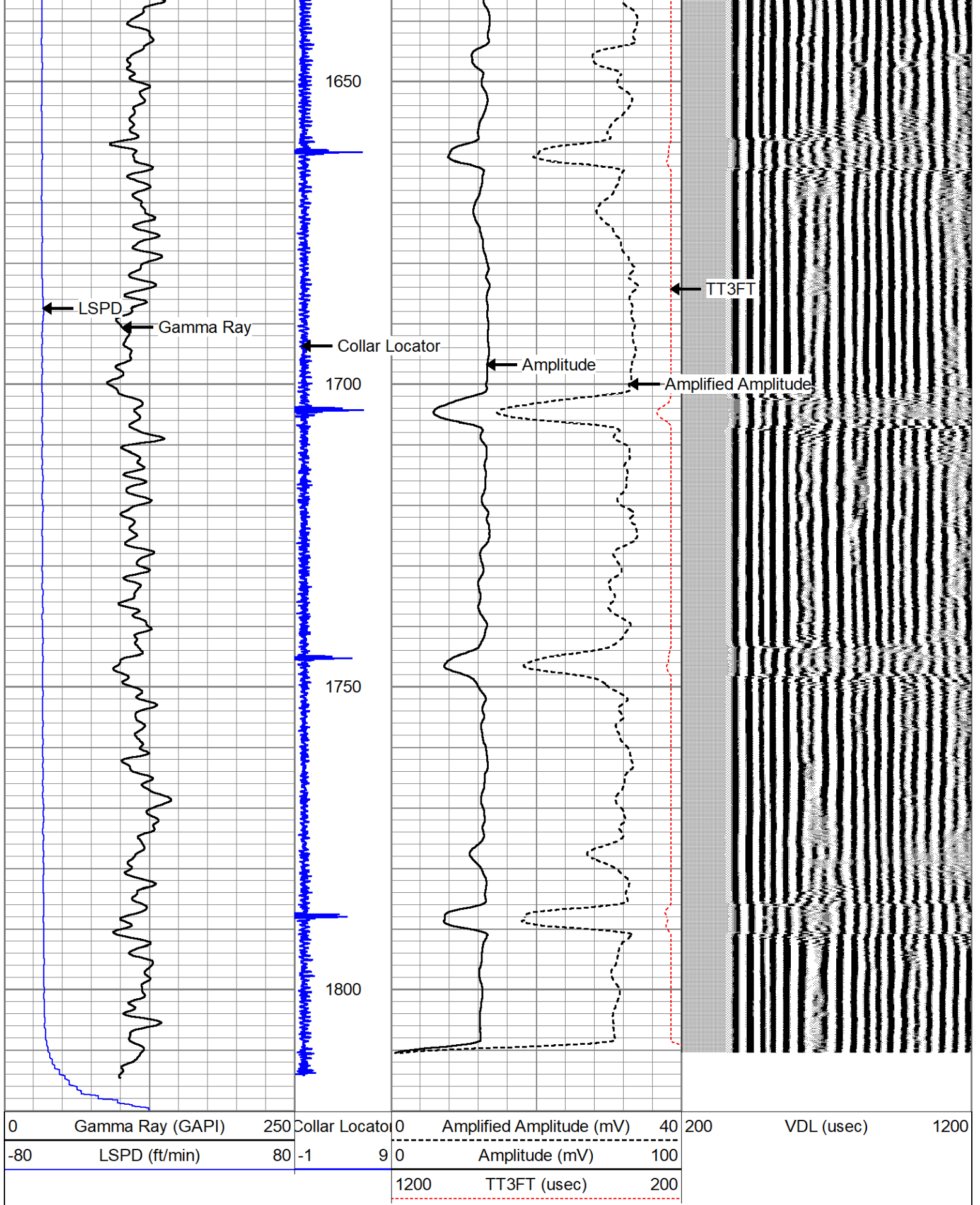




REPEAT PASS

Database File 6-28-23.db
 Dataset Pathname pass7
 Presentation Format cbl_dr
 Dataset Creation Wed Jun 28 11:54:12 2023
 Charted by Depth in Feet scaled 1:240





Calibration Report

Database File 6-28-23.db
 Dataset Pathname pass9
 Dataset Creation Wed Jun 28 11:59:37 2023

Gamma Ray Calibration Report

Serial Number:	275	
Tool Model:	Probe	
Performed:	Thu Aug 07 08:00:19 2008	
Calibrator Value:	100.0	GAPI
Background Reading:	35.0	cps
Calibrator Reading:	160.0	cps
Sensitivity:	1.0000	GAPI/cps

Segmented Cement Bond Log Calibration Report

Serial Number:	275	
Tool Model:	Probe	
Calibration Casing Diameter:	4.500	in
Calibration Depth:	50.025	ft

Master Calibration, performed Wed Jun 28 11:41:10 2023:

	Raw (v)		Calibrated (mv)		Results	
	Zero	Cal	Zero	Cal	Gain	Offset
3'	0.000	1.048	0.000	81.196	77.464	0.000
CAL						
5'	0.000	0.756	0.000	81.196	107.440	0.000
SUM						
S1						
S2						
S3						
S4						
S5						
S6						
S7						
S8						

Internal Reference Calibration, performed (Not Performed):

	Raw (v)		Calibrated (v)		Results	
	Zero	Cal	Zero	Cal	Gain	Offset
CAL						

Air Zero Calibration, performed Thu May 28 09:57:00 2020:

	Raw (v)		Calibrated (v)		Results	
	Zero		Zero		Offset	
3'	0.000		0.000			0.000
5'	0.000		0.000			0.000
SUM						
S1						
S2						
S3						
S4						
S5						
S6						
S7						
S8						

Sensor	Offset (ft)	Schematic	Description	Length (ft)	O.D. (in)	Weight (lb)
			CS6CENT-CSSROLLER	2.20	1.69	4.41
WVF3FT	10.72		CBL-Probe (275) Probe 2.75" Dual Receiver Bond	8.75	2.75	60.00
WVF5FT	9.72					
WVFSYNC HEADVOLT CCL	6.53 6.53 5.84					
GR	3.10		GR-Probe (275) Probe 2.75" 4 Channel Pulse	4.33	2.75	30.00
			CS6CENT-CSSROLLER	2.20	1.69	4.41

Dataset: 6-28-23.db: field/well/run1/pass9
Total length: 17.48 ft

Total weight: 98.82 lb
O.D.: 2.75 in

Log Variables

DatabaseC:\ProgramData\Warrior\Data\6-28-23.db
Dataset field/well/run1/pass9/_vars_

Top - Bottom

BOREID in 7.875	BOTTEMP degF 100	CASEOD in 4.5	CASETHCK in 0	CASEWGHT lb/ft 11.6	MAXAMPL mV 81.2	MINAMPL mV 0	MINATTN db/ft 0.8
PERFS No	PPT usec 0	SRFTEMP degF 0	TDEPTH ft 0				

Variable Description

BOREID : Borehole I.D.

BOTTEMP : Bottom Hole Temperature

CASEOD : Casing O.D.

CASETHCK : Casing Thickness

CASEWGHT : Casing Weight

MAXAMPL : Maximum Amplitude

MINAMPL : Minimum Amplitude

MINATTN : Minimum Attenuation

PERFS : Perforation Flag

PPT : Predicted Pipe Time

SRFTEMP : Surface Temperature

TDEPTH : Total Depth