



Laramie Energy

LONG STRING POST JOB REPORT

Laramie Fed #0993-21-16W 05-077-10649
S:29 T:9S R:93W Mesa CO

CallSheet #: 96484
Proposal #: 84650



LONG STRING Post Job Report

Attention: Mr. Aaron Duncan | (406) 498-4526 | aduncan@laramie-energy.com

Laramie Energy

1700 Lincoln Street, Suite 3950 | Denver, CO 80203

Dear Mr. Aaron Duncan,

Thank you for the opportunity to provide cementing services on this well. American Cementing strives to achieve complete customer satisfaction. If you have any questions regarding the services or data provided, please contact American Cementing at any time.

Sincerely,

Addison Kneale

Field Engineer II | (904) 228-9560 | addison.kneale@americacementing.com

Field Office 28730 US-6, Rifle, CO 81650
Phone: (970) 657-1187

Job Details & Summary

Geometry

Type	Function	OD (in)	ID (in)	Weight (lb/ft)	Thread	Top (ft)	Bottom (ft)	Excess (%)
Casing	Outer	8.625	8.097	24	n/a	0	1550	0
Open Hole	Outer	n/a	7.875	n/a	n/a	1550	6364	25
Open Hole	Outer	n/a	7.875	n/a	n/a	6364	8339	25
Casing	Inner	4.5	4	11.6	n/a	0	8339	0

Equipment / People

Unit Type	Unit	Power Unit	Employee #1
Field Storage Silo	FSS-479		
Field Storage Silo	FSS-476		
Cement Trailer Float	CTF-242	TRC-054	Michael Hutchinson
Cement Pump Float	CPF-058	TRH-1140	Jeremy Bradbrook
Light Duty Vehicles	LDV-168		James Lujan
Tractors	TRB-421		Josue Carrasco

Timing

Event	Date/Time
ERTS	08/04/2025 00:00
Call Out	8/4/2025 20:00
Depart Facility	8/4/2025 23:00
On Location	8/5/2025 01:22
Rig Up Iron	8/5/2025 01:35
Job Started	8/5/2025 04:06
Job Completed	8/5/2025 06:15
Rig Down Iron	8/5/2025 06:25
Depart Location	8/5/2025 08:00

General Job Information

Metrics	Value
Well Fluid Density	9.8 lb/gal
Well Fluid Type	WBM
Rig Circulation Vol	1150 bbls
Rig Circulation Time	2 hours
Calculated Displacement	127 bbls
Actual Displacement	127 bbls
Total Spacer to Surface	40 bbls
Total CMT to Surface	2 bbls
Well Topped Out	N/A

Job Details

Metrics	Value
Well Full Prior to Job	Yes
Well Fluid Density Into Well	9.8 lb/gal
Well Fluid Density Out of Well	9.8 lb/gal

Job Details (cont.)

Metrics	Value
BHCT	171 °F
BHST	244 °F

Water Analysis

Metrics	Value	Recommended
Water Source	Upright Rig Tank	
Temperature	61 °F	50-80 °F
pH Level	8	5.5-8.5
Chlorides	0 mg/L	0-3000 mg/L
Total Alkalinity	250	0-1000
Total Hardness	250 mg/L	0-500 mg/L
Carbonates	0 mg/L	0-100 mg/L
Sulfates	200 mg/L	0-1500 mg/L
Potassium	250 mg/L	0-3000 mg/L
Iron	0 mg/L	0-300 mg/L

Circulation

Lost Circulation Experienced

No

Job Execution Information

Fluid	Product	Function	Density (lb/gal)	Yield (ft ³ /sk)	Water Rq. (gal/sk)	Water Rq. (gal/bbl)	Volume (sks)	Volume (bbl)	Designed Top (ft)
1	IntegraGuard EZ	Spacer	11.00			33.21		40.00	641
2	Lead	Lead	12.70	2.21	12.04		620.00	244.22	1550
3	Tail	Tail	13.00	2.02	10.17		281.00	101.04	6364
4	Water with Chems	DisplacementFinal	8.34			42.00		129.00	0

Job Fluid Details

Fluid	Type	Fluid	Product	Function	Conc.	Uom
1	Spacer	IntegraGuard EZ	S-8	StrengthRetgression	179.60	lb/bbl
1	Spacer	IntegraGuard EZ	GW-86	Viscosifier	0.90	lb/bbl
1	Spacer	IntegraGuard EZ	SS-201	Surfactant	0.50	gal/bbl
1	Spacer	IntegraGuard EZ	XCem-311	Defoamer	0.50	lb/bbl
2	Lead	Lead	ASTM TYPE IL	Cement	100.00	%
2	Lead	Lead	A-5	Accelerator	5.00	%BWOW
2	Lead	Lead	AEXT-1011	Extender	8.00	lb/sk
2	Lead	Lead	EC-2	BondEnhancer	1.00	%BWOB
2	Lead	Lead	GW-86	Viscosifier	0.03	%BWOB
2	Lead	Lead	IntegraSeal PHENO	LostCirculation	2.00	lb/sk
2	Lead	Lead	IntegraSeal POLI	LostCirculation	0.25	lb/sk
2	Lead	Lead	R-3	Retarder	0.50	%BWOB
2	Lead	Lead	STATIC FREE	Other	0.01	lb/sk
2	Lead	Lead	XCem-311	Defoamer	0.30	%BWOB
2	Lead	Lead	XCem-532	FluidLoss	0.20	%BWOB
3	Tail	Tail	CLASS G	Cement	50.00	%
3	Tail	Tail	FLY ASH (POZZOLAN)	Extender	50.00	%
3	Tail	Tail	AEXT-1011	Extender	4.00	lb/sk
3	Tail	Tail	BA-60	GasMigration	0.30	%BWOB
3	Tail	Tail	BENTONITE	Viscosifier	6.00	%BWOB
3	Tail	Tail	GW-86	Viscosifier	0.10	%BWOB
3	Tail	Tail	IntegraSeal PHENO	LostCirculation	0.50	lb/sk
3	Tail	Tail	IntegraSeal POLI	LostCirculation	0.25	lb/sk
3	Tail	Tail	S-8	StrengthRetgression	20.00	%BWOB
3	Tail	Tail	STATIC FREE	Other	0.01	lb/sk
3	Tail	Tail	XCem-311	Defoamer	0.30	%BWOB
3	Tail	Tail	XCem-532	FluidLoss	0.40	%BWOB

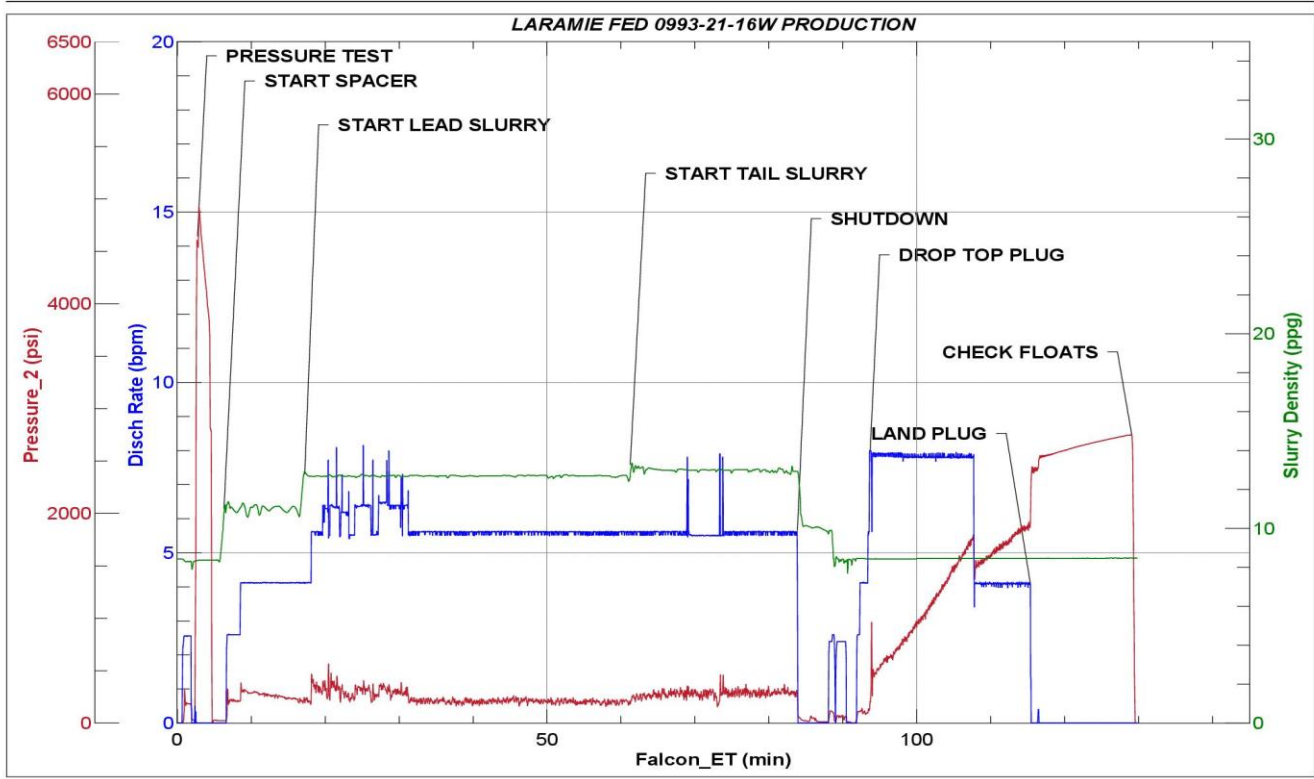
Job Logs

Line	Event	Date (MM/DD/YY)	Time (HH:MM)	Density (lb/gal)	Pump Rate (bpm)	Pump Volume (bbls)	Pipe Pressure (psi)	Comment
1	Callout	8/4/2025	20:00					CALLOUT @ 20:00/ CUSTOMER REQUESTED CREW ON LOCATION @ 03:00
2	Depart Location	8/4/2025	23:00					DEPART RCO YARD
3	Arrive On Location	8/5/2025	01:22					ARRIVE ON CUSTOMER LOCATION
4	Safety Meeting	8/5/2025	01:30					PRE RIG UP SAFETY MEETING
5	Rig Up Iron	8/5/2025	01:35					RIG IN IRON
6	Safety Meeting	8/5/2025	03:53					PRE JOB SAFETY MEETING
7	Start Job	8/5/2025	04:06					
8	Pressure Test Lines	8/5/2025	04:08	8.34				FILL LINES/ PRESSURE TO 5000 PSI
9	Pump Spacer	8/5/2025	04:14	11	4	1	293	START 40 BBLS OF EZSPACER @ 11 PPG
10	Pump Spacer	8/5/2025	04:22	11	4	40	223	END SPACER
11	Pump Lead Cement	8/5/2025	04:22	12.7	6.5	1	211	START 244.2 BBLS OF LEAD CEMENT @ 12.7 PPG (2.21,12.04) 620 SKS
12	Pump Lead Cement	8/5/2025	04:31	12.7	5.5	50	335	50 BBLS PUMPED
13	Pump Lead Cement	8/5/2025	04:39	12.7	5.5	100	214	100 BBLS PUMPED
14	Pump Lead Cement	8/5/2025	04:48	12.7	5.5	150	219	150 BBLS PUMPED
15	Pump Lead Cement	8/5/2025	04:57	12.7	5.5	200	184	200 BBLS PUMPED
16	Pump Lead Cement	8/5/2025	05:07	12.7	5.5	244.2	193	END OF LEAD SLURRY
17	Pump Tail Cement	8/5/2025	05:07	13	5.5	1	208	START 101 BBLS OF TAIL CEMENT @ 13 PPG (2.02,10.17) 281 SKS
18	Pump Tail Cement	8/5/2025	05:16	13	5.5	50	259	50 BBLS PUMPED
19	Pump Tail Cement	8/5/2025	05:29	13	5.5	101	329	END OF TAIL SLURRY
20	Shutdown	8/5/2025	05:29					SHUTDOWN/ WASH UP TO PIT
21	Drop Top Plug	8/5/2025	05:38	8.34	4			TOP TOP PLUG
22	Pump Displacement	8/5/2025	05:38	8.34	4	1	118	START 127 BBLS OF FRESH WATER DISPLACEMENT
23	Pump Displacement	8/5/2025	05:46	8.34	8	50	937	50 BBLS PUMPED
24	Pump Displacement	8/5/2025	05:52	8.34	8	100	1708	100 BBLS PUMPED
25	Pressure before slow	8/5/2025	05:54	8.34	8	117	1784	PRESSURE BEFORE SLOW @ 1784 PSI
26	Slow Pump Rate	8/5/2025	05:54	8.34	4	117	1492	SLOW PUMP RATE @ 1492 PSI
27	Final circulating pressure	8/5/2025	06:02	8.34	4	127	1850	FCP @ 1850 PSI
28	Land Plug	8/5/2025	06:02	8.34	4	127	2520	LAND PLUG @ 2520 PSI
29	Check Floats	8/5/2025	06:15					1.5 BBLS BACK UPON FLOAT CHECK/ 40 BBLS OF SPACER & 2 BBLS OF CEMENT BACK TO SURFACE
30	End Job	8/5/2025	06:15					END OF CEMENTING SERVICES
31	Safety Meeting	8/5/2025	06:20					PRE RIG DOWN SAFETY MEETING
32	Rig Down Iron	8/5/2025	06:25					RIG DOWN IRON
33	Depart Location	8/5/2025	08:00					DEPART CUSTOMER LOCATION

Pump Diagrams



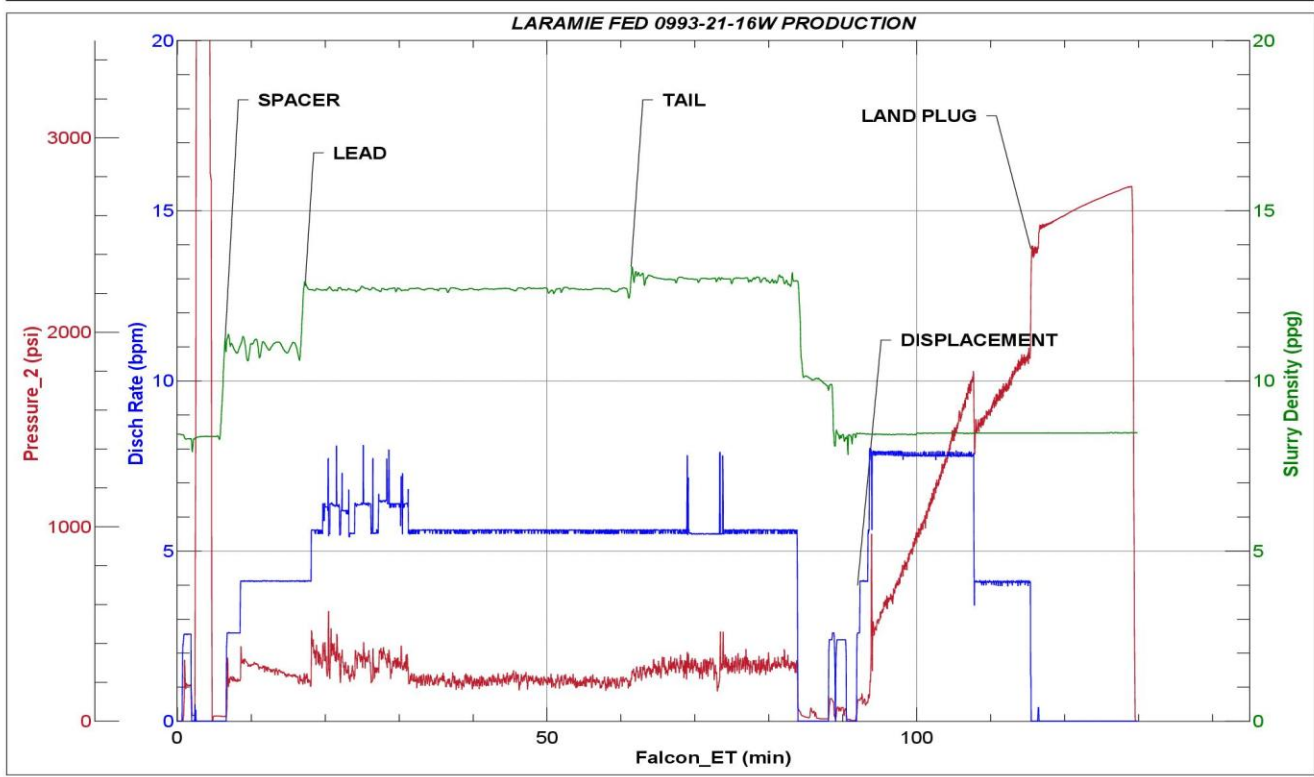
JobMaster Program Version 5.01C1
Job Number: 96484
Customer: LARAMIE
Well Name: FED 0993 21-16W



Job Start: Tuesday, August 05, 2025



JobMaster Program Version 5.01C1
Job Number: 96484
Customer: LARAMIE
Well Name: FED 0993 21-16W



Job Start: Tuesday, August 05, 2025