



**Compensated Neutron
Gamma Ray
Casing Collar Log**

Company Laramie Energy LLC
Well Laramie Federal 0993-21-16W
Field Buzzard Creek
County Mesa
State Colorado

Company Laramie Energy LLC
Well Laramie Federal 0993-21-16W
Field Buzzard Creek
County Mesa State Colorado

Location: API #: 05-077-10649
SEC 29 TWP 9S RGE 93W
Permanent Datum Ground Level Elevation 7394'
Log Measured From Kelly Bushing
Drilling Measured From Kelly Bushing 30'
Other Services
RCBL
Elevation
K.B. 7424'
D.F. 7394'
G.L. 7394'

Date	03-OCT-2025		
Run Number	One		
Depth Driller	8280'		
Depth Logger	8210'		
Bottom Logged Interval	8208'		
Top Log Interval	5000'		
Open Hole Size	8.75"		
Type Fluid	Water		
Density / Viscosity	8.34 Lb/Gal		
Max. Recorded Temp.	---		
Estimated Cement Top	---		
Time Well Ready	ROA		
Time Logger on Bottom	17:30		
Equipment Number	8102		
Location	Grand Junction		
Recorded By	P. Edwards		
Witnessed By	J. Skalla		

Borehole Record			Tubing Record				
Run Number	Bit	From	To	Size	Weight	From	To

Casing Record	Size	Mgt/Ft	Top	Bottom
Surface String	8.625"	24.0	Surface	1547'
Prot. String				
Production String	4.5"	11.6	Surface	8270'
Liner				

<<< Fold Here >>>

All interpretations are opinions based on inferences from electrical or other measurements and we cannot and do not guarantee the accuracy or correctness of any interpretation, and we shall not, except in the case of gross or willful negligence on our part, be liable or responsible for any loss, costs, damages, or expenses incurred or sustained by anyone resulting from any interpretation made by any of our officers, agents or employees. These interpretations are also subject to our general terms and conditions set out in our current Price Schedule.

Comments

Log ran as per customer request
Depth referenced to Kelly Bushing at 30'

Marker Joints at:
6472' - 6493'
7688' - 7710'

Thank you for choosing The Wireline Group!



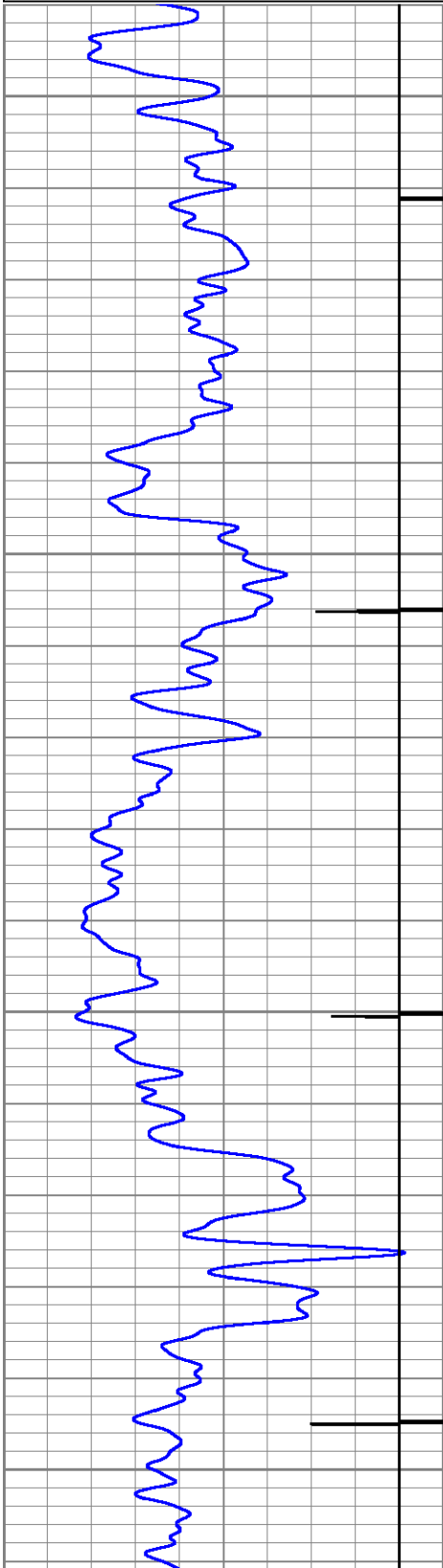
Main Pass 5" = 100' (0 PSI)

Database File laramie 29-01 fed 0993-21-16w rcb1_cnl.db
 Dataset Pathname main
 Presentation Format twg_cnl
 Dataset Creation Fri Oct 03 19:17:32 2025
 Charted by Depth in Feet scaled 1:240

0	GR (GAPI)	150
9	CCL	-1

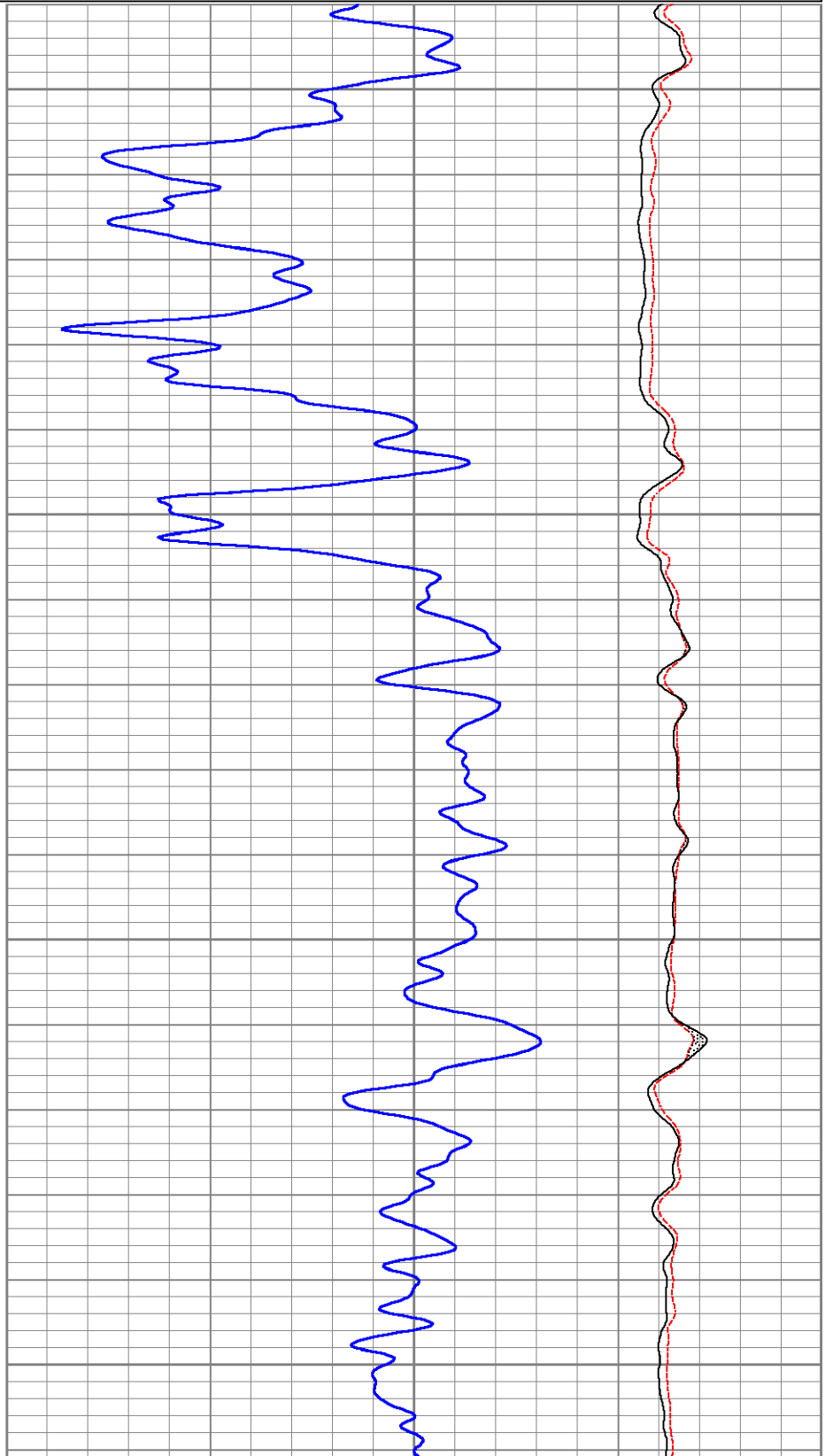
0.3 CNPOR (pu) -0.1

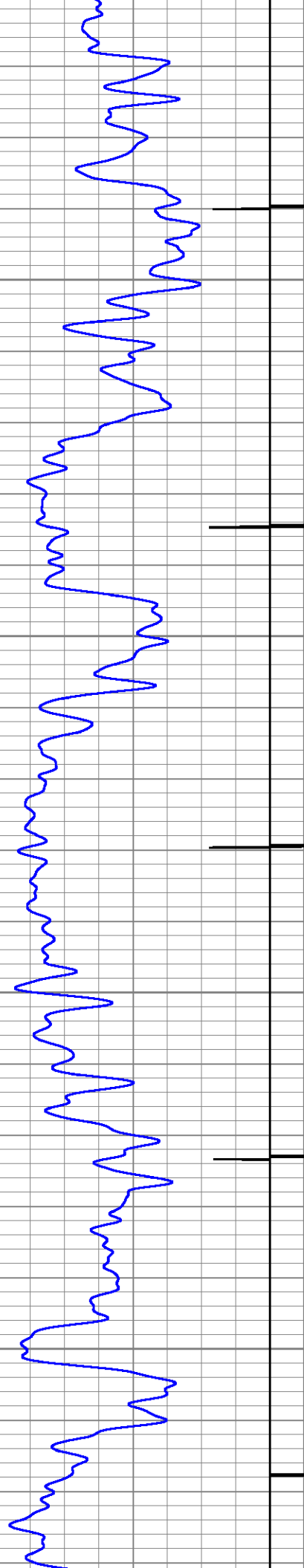
CNLSC		
0	(cps)	1500
CNSSC		
0	(cps)	7000



5000

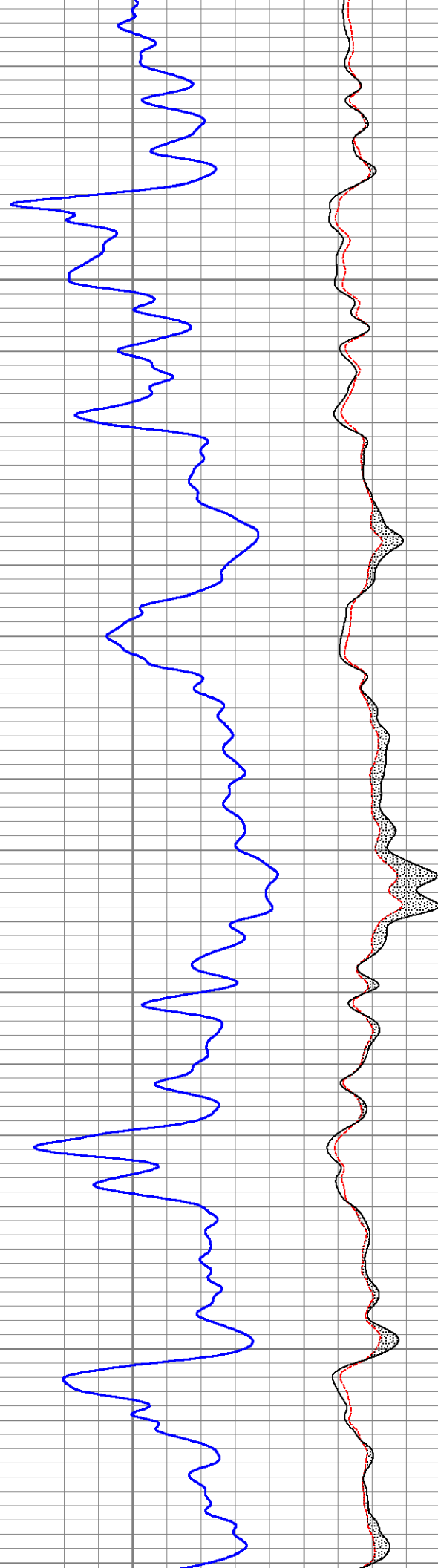
5100

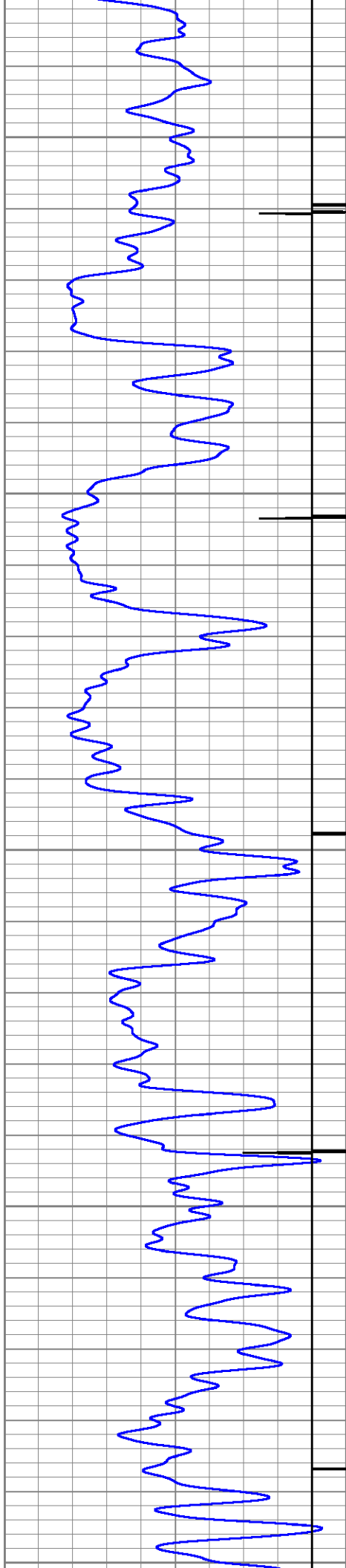




5200

5300

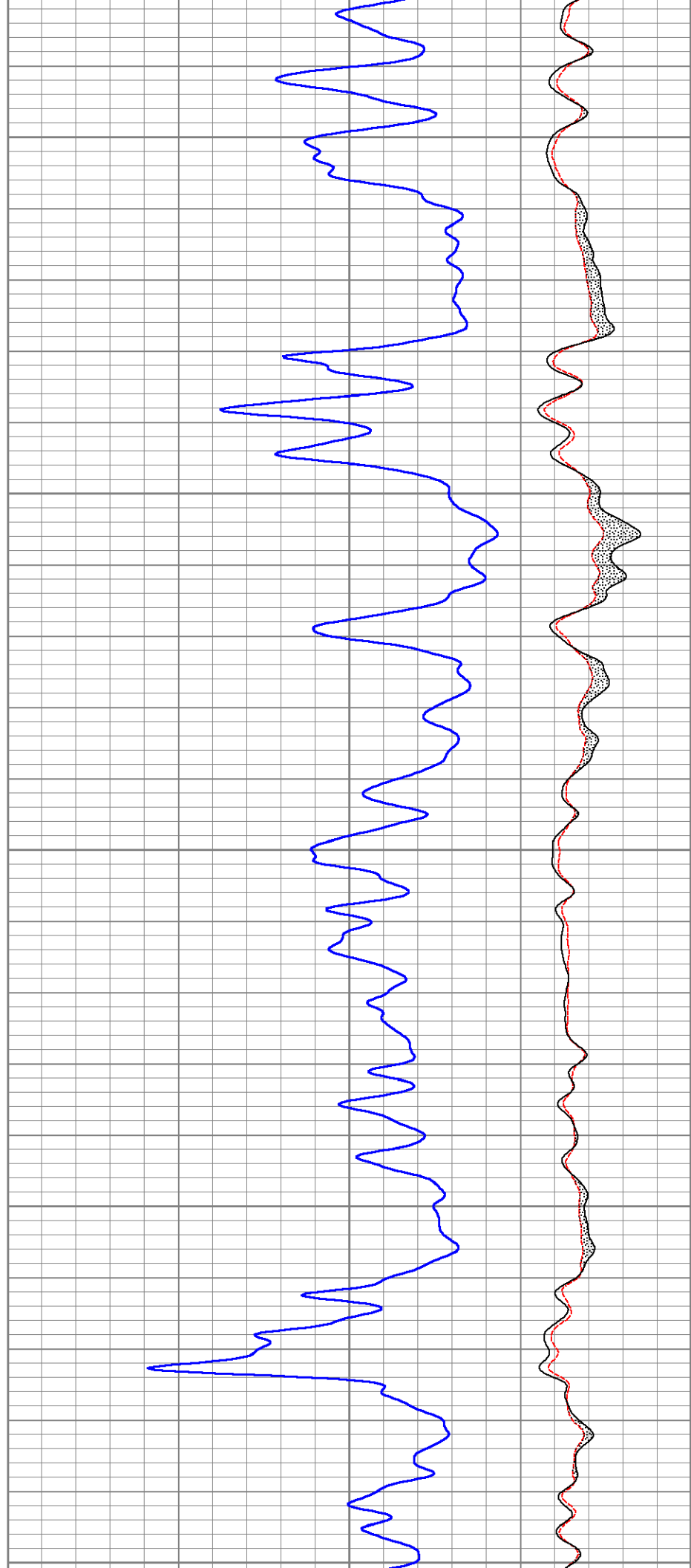


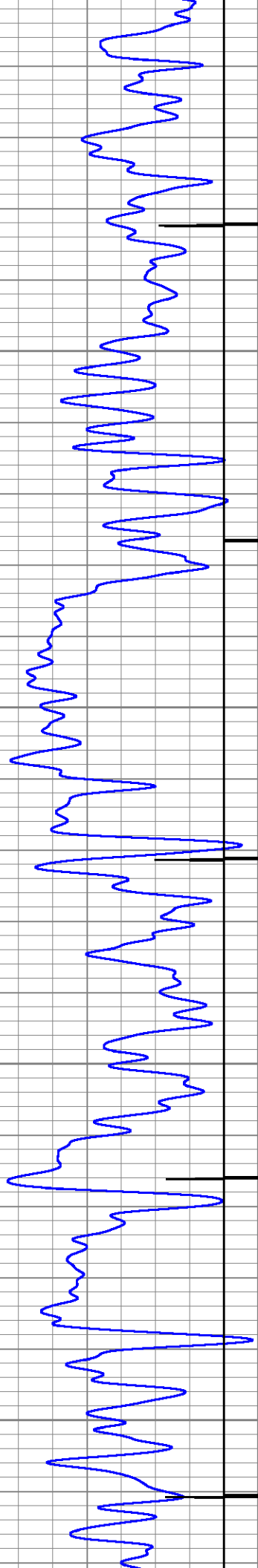


5400

5500

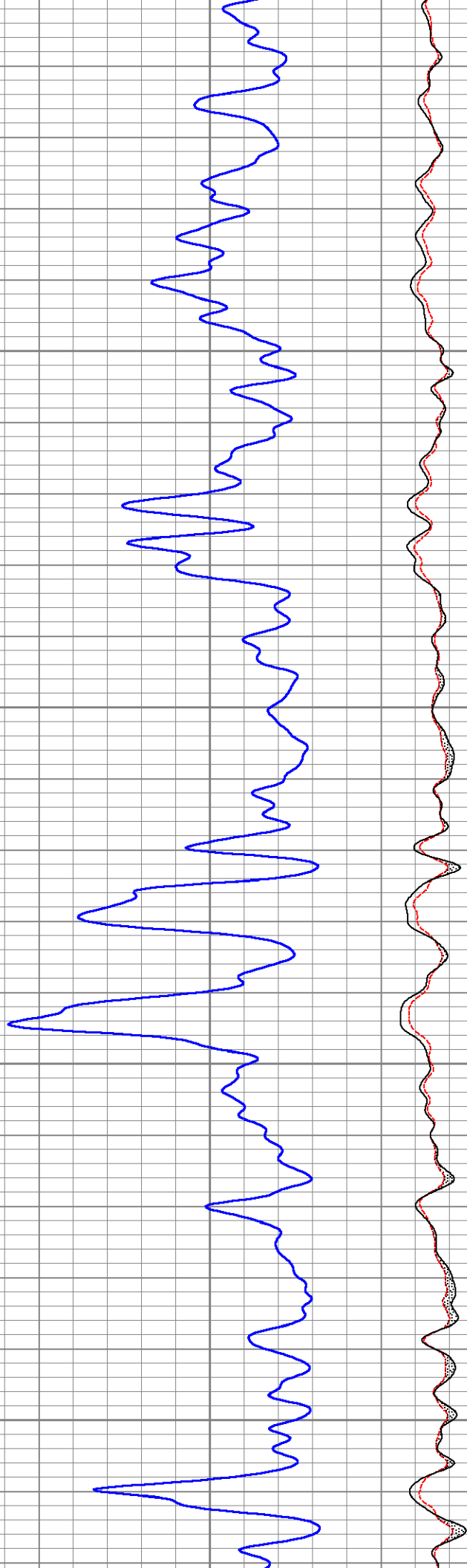
5600

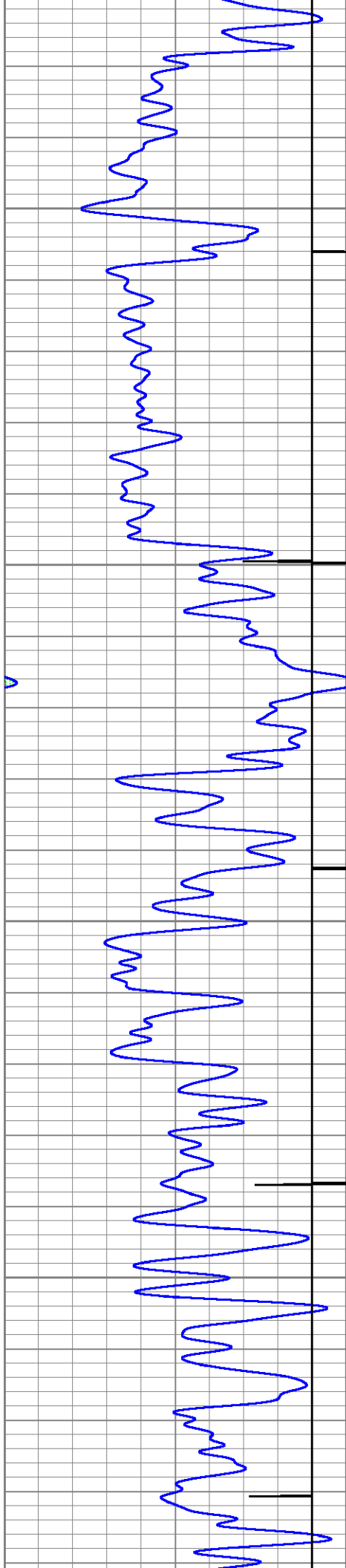




5700

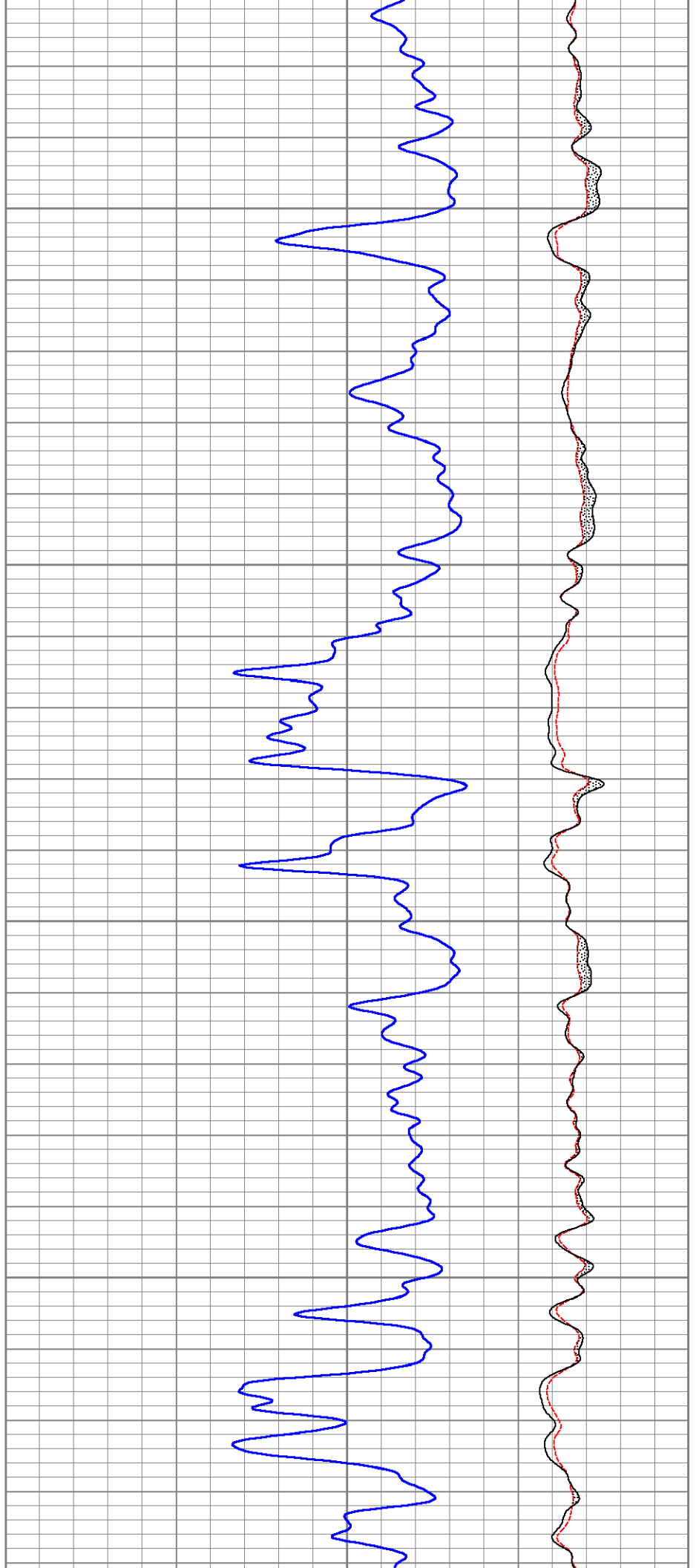
5800

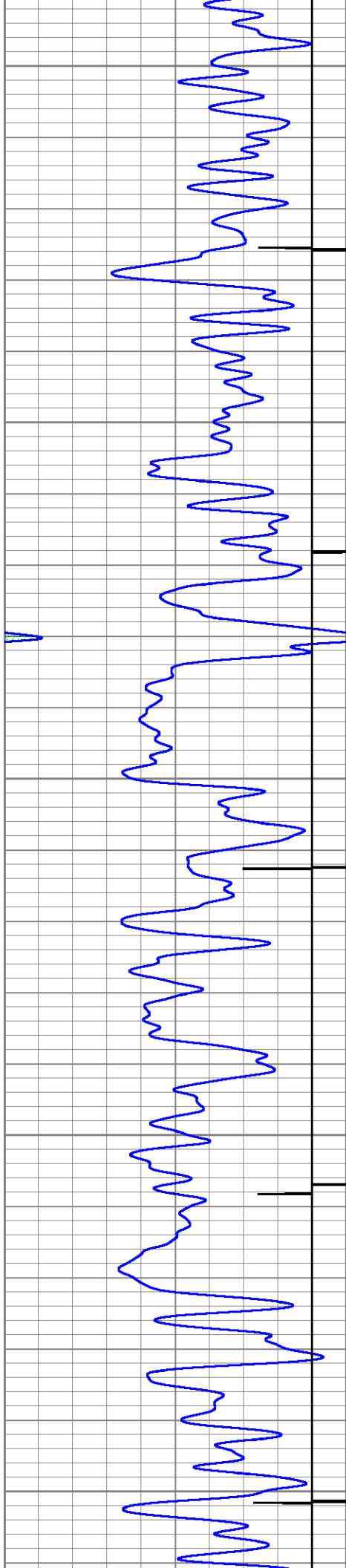




5900

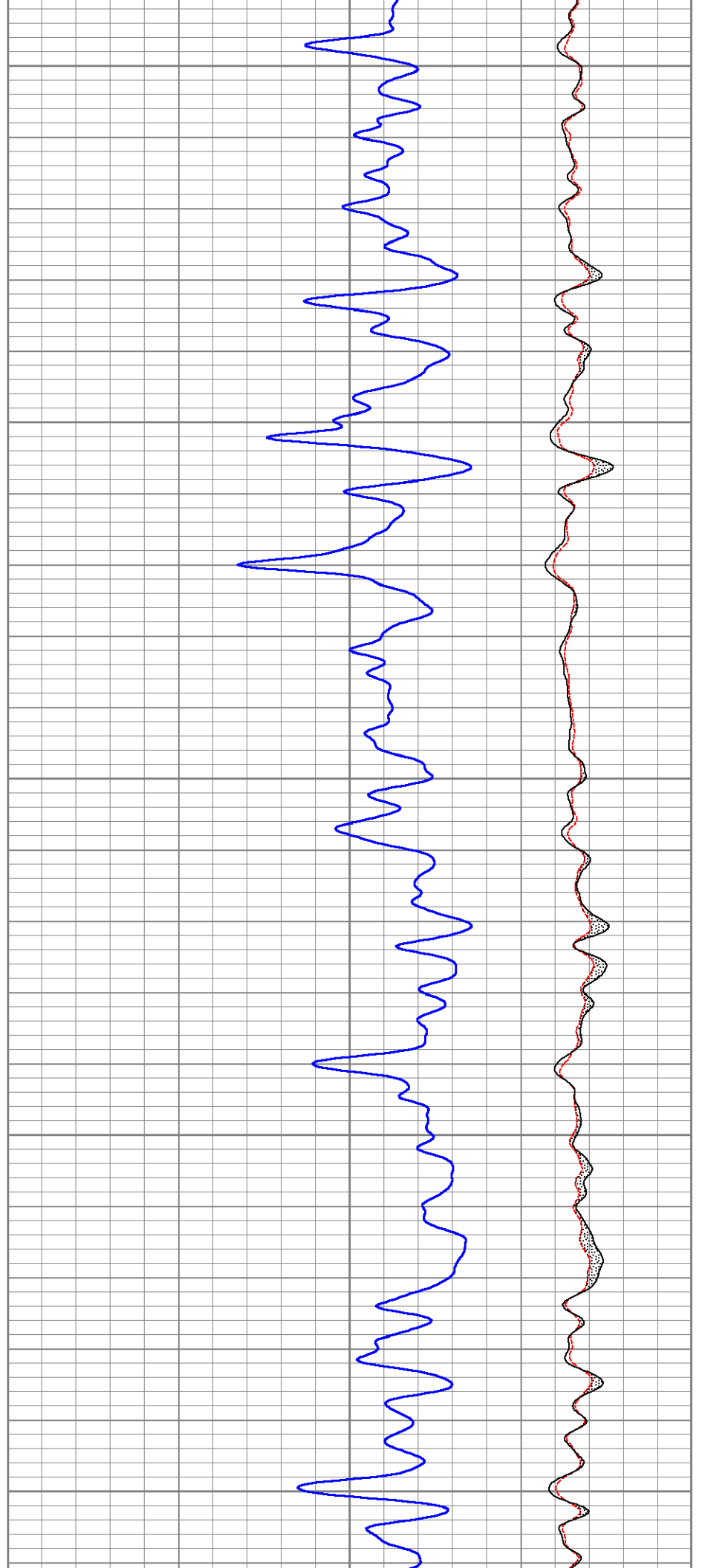
6000

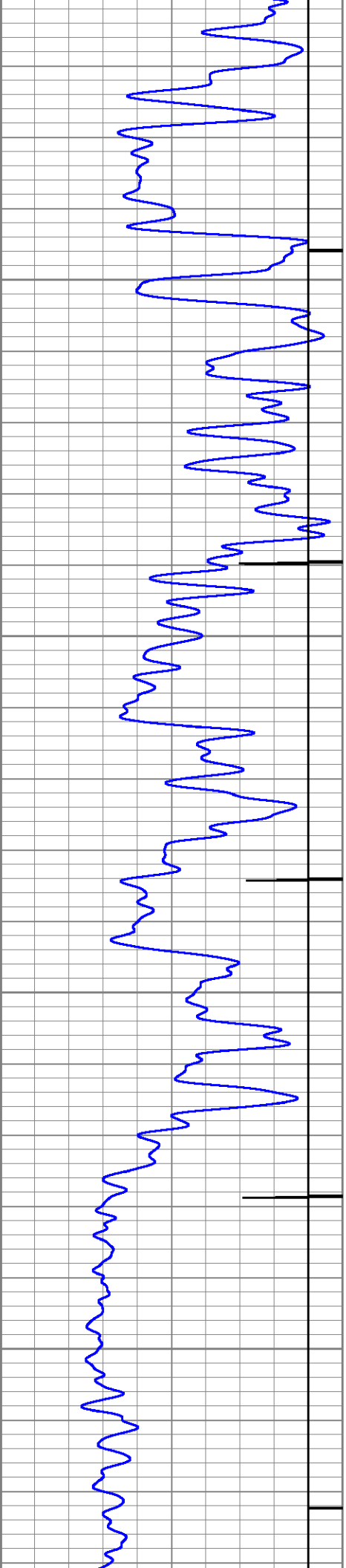




6100

6200

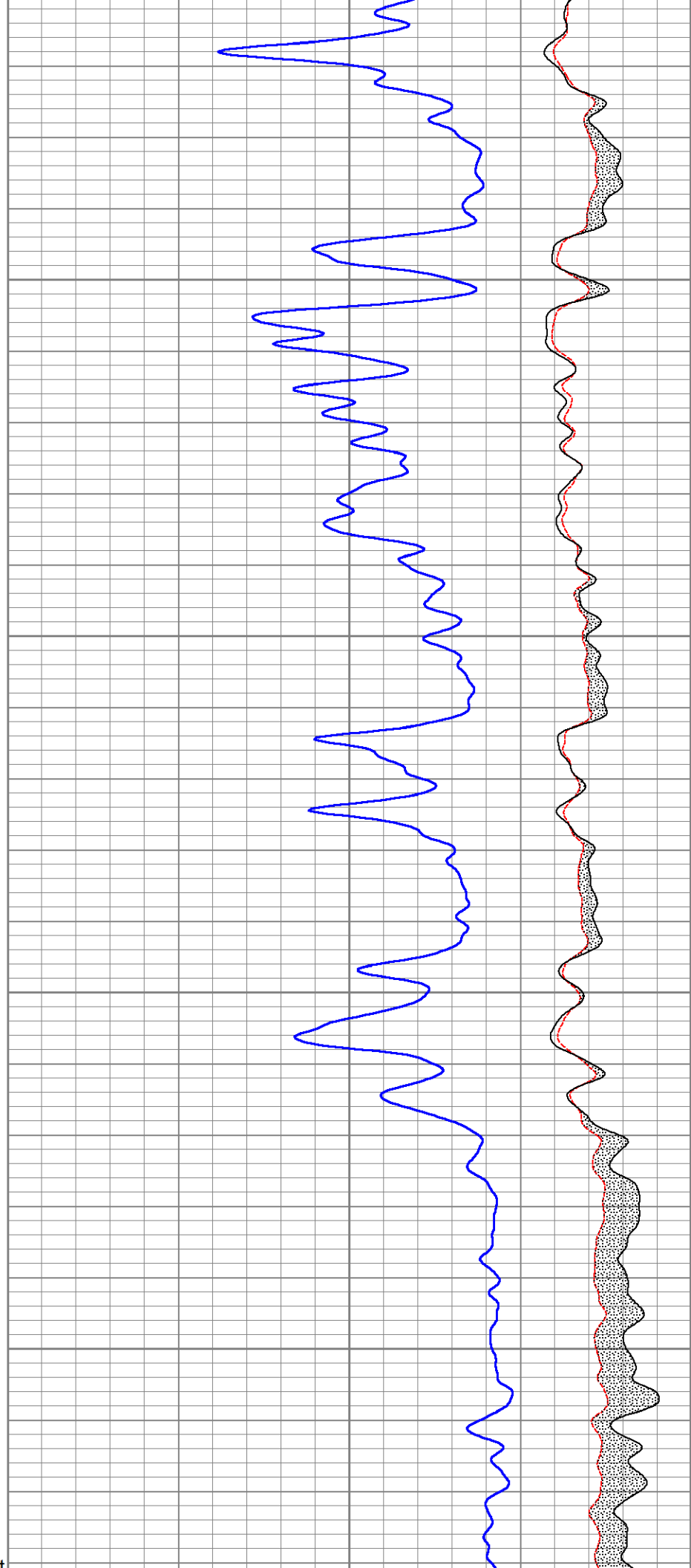




6300

6400

Marker Joint

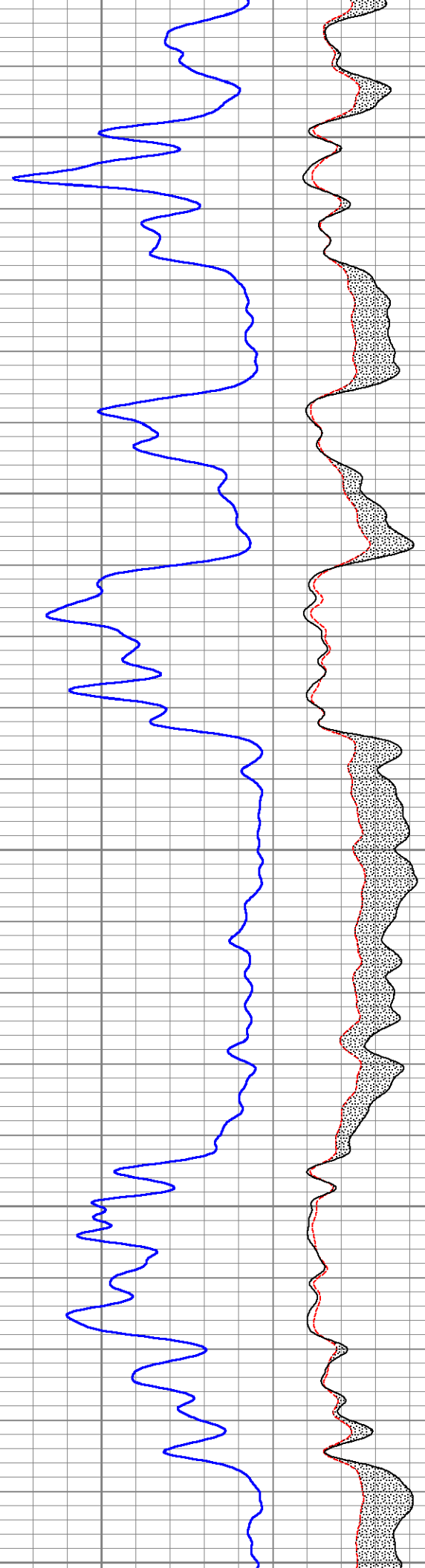
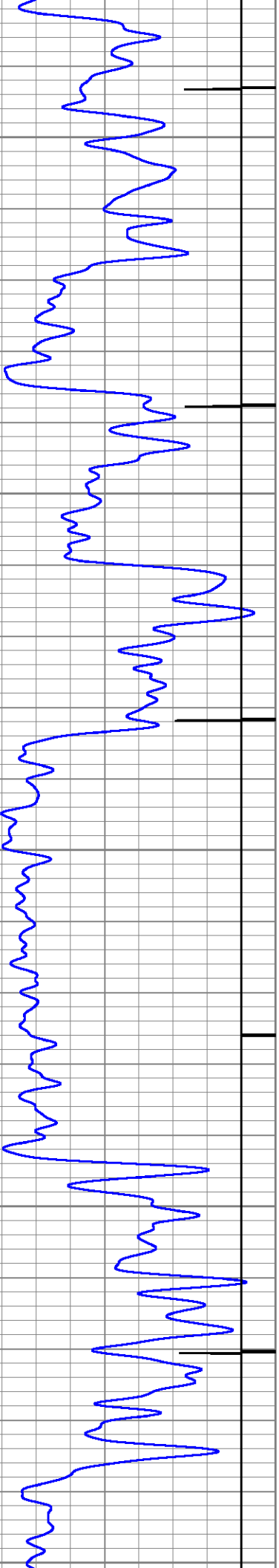


marker joint

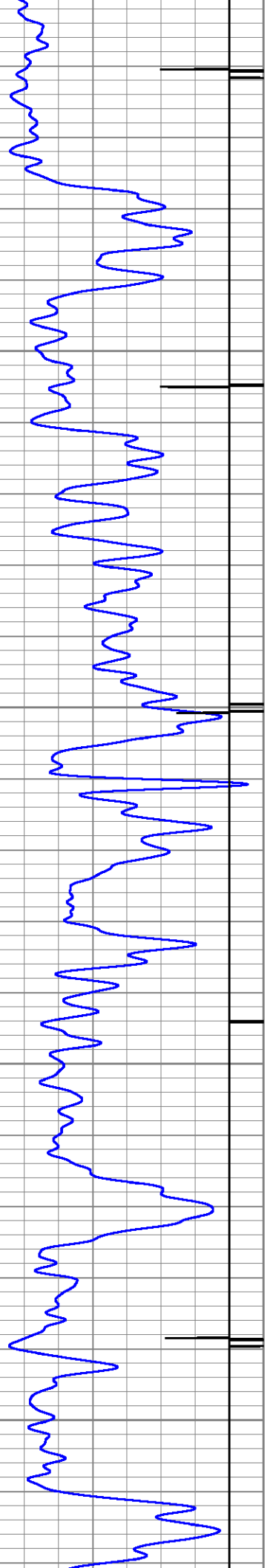
6500

6600

6700

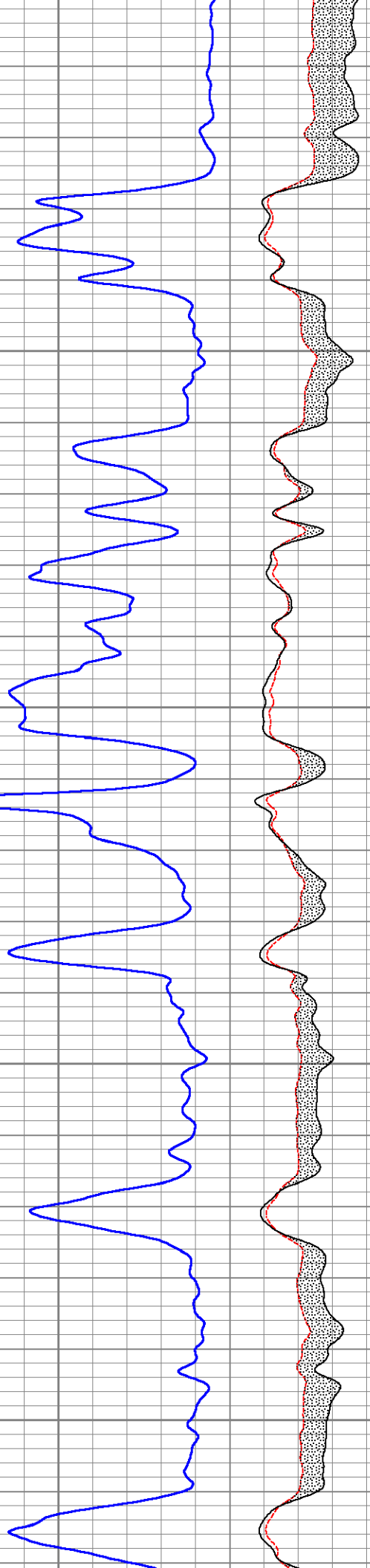


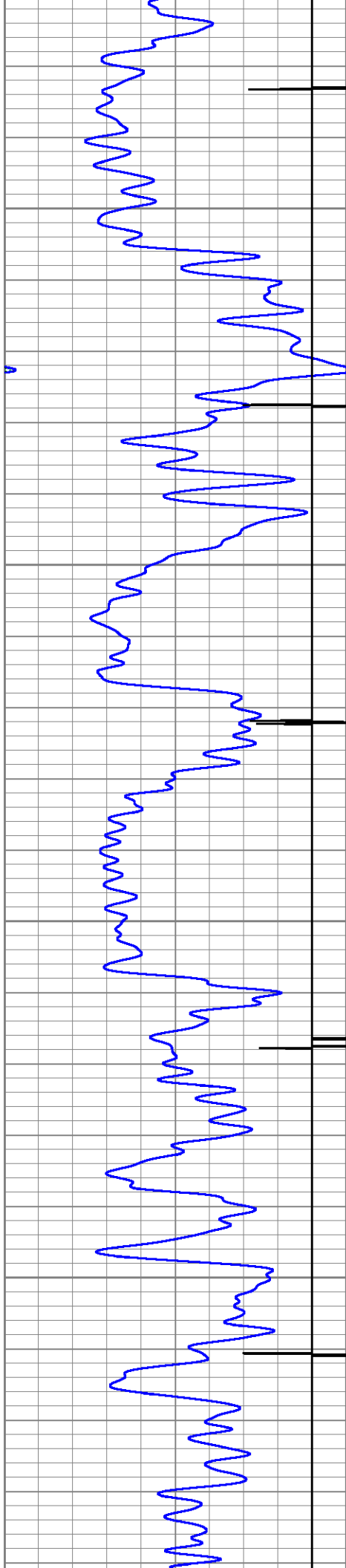
6800



6800

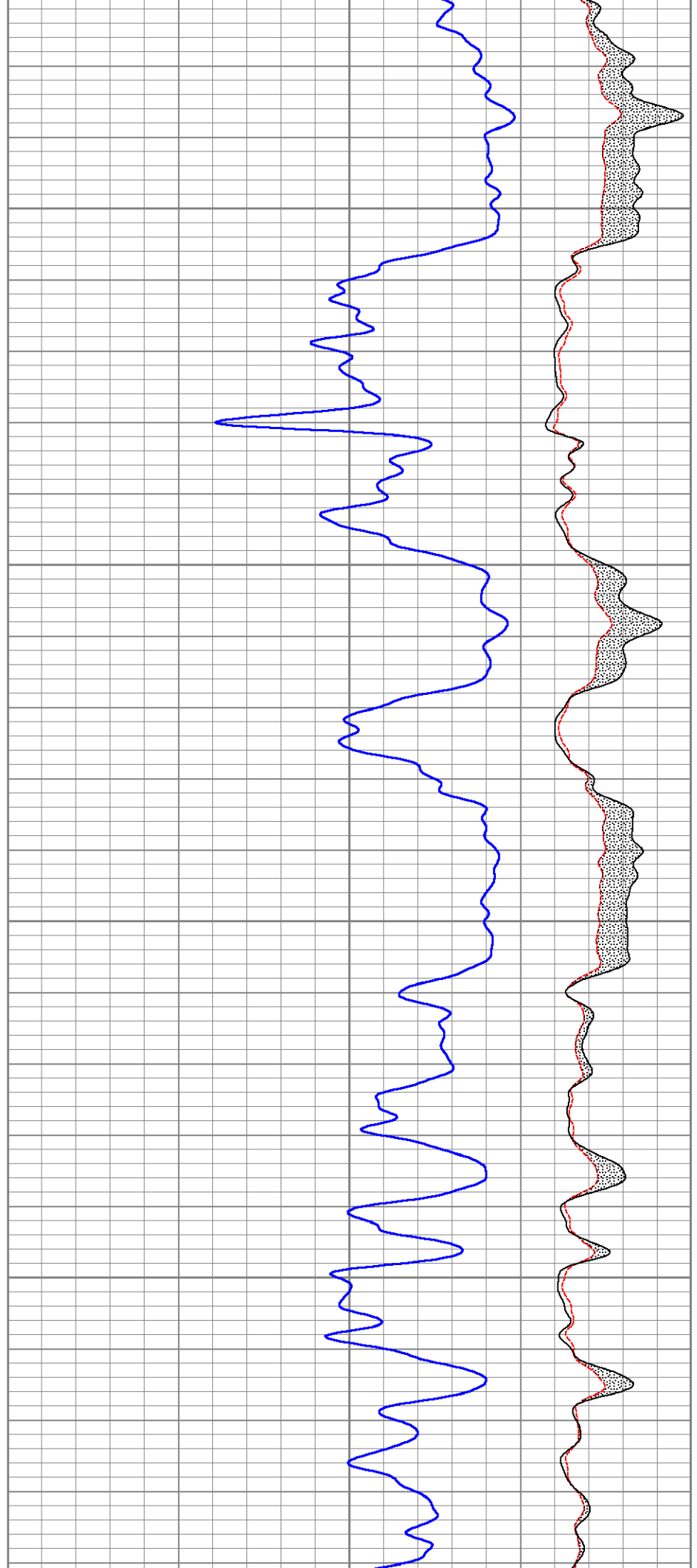
6900

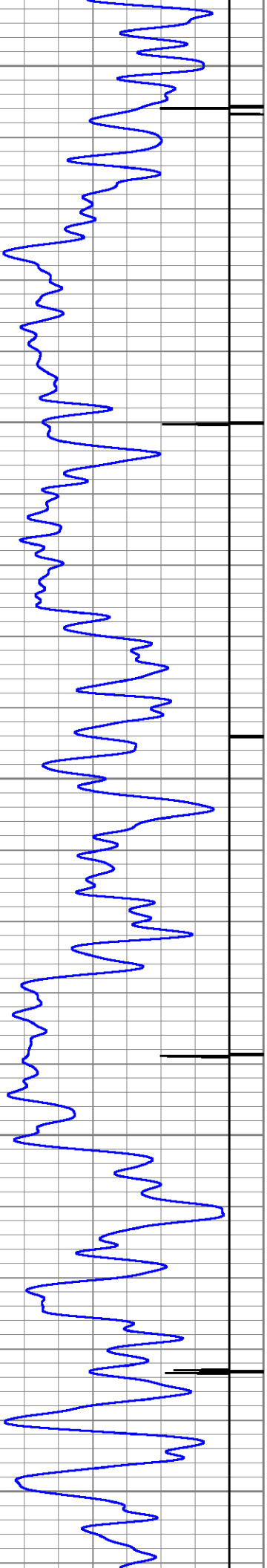




7000

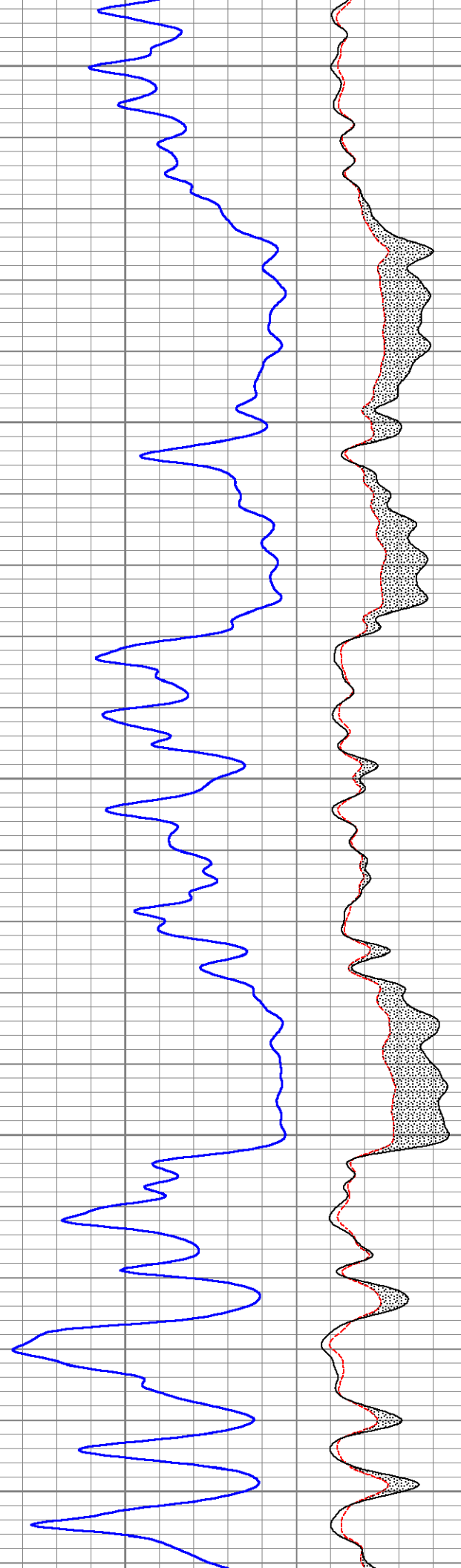
7100

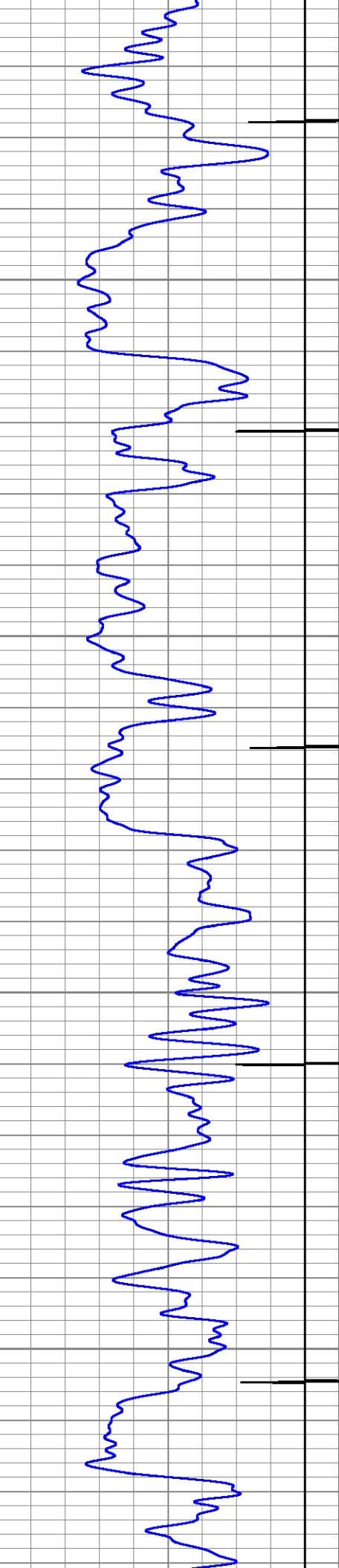




7200

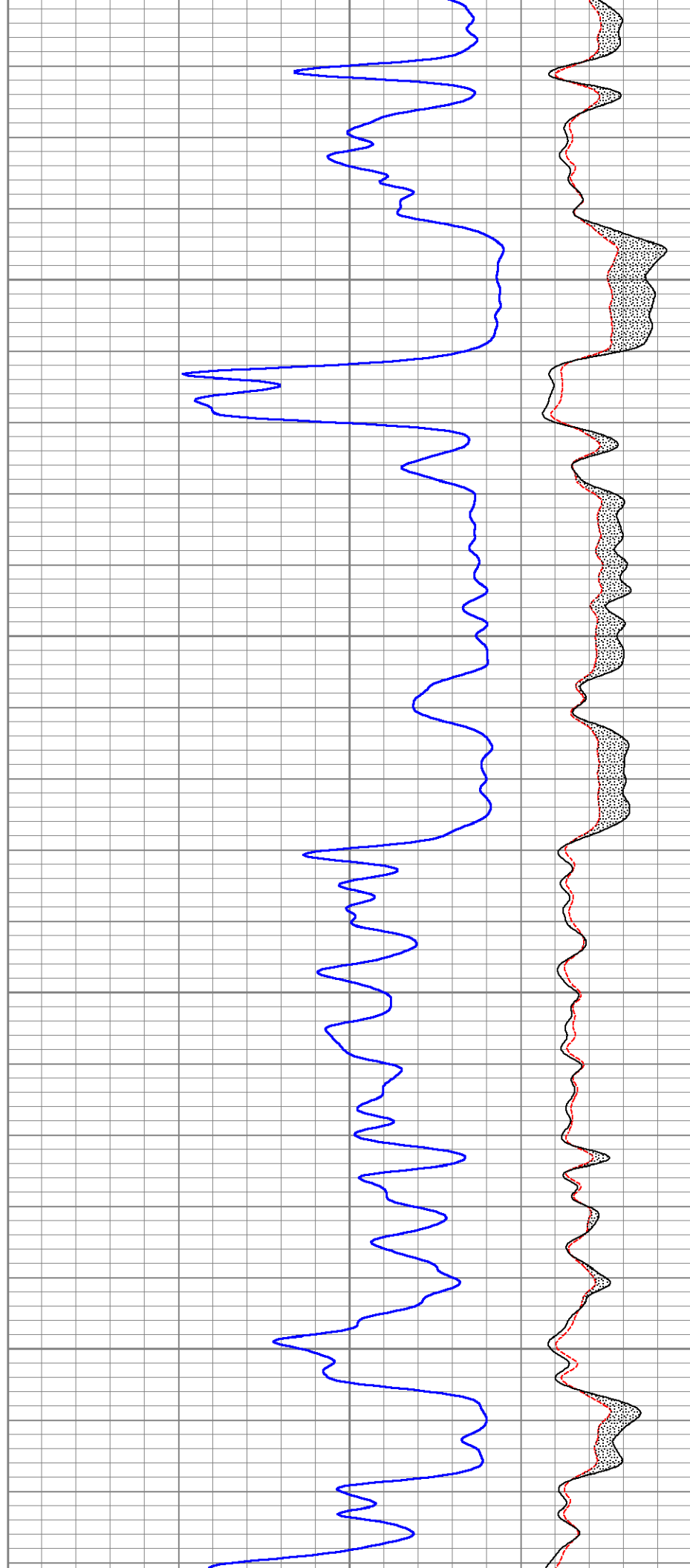
7300

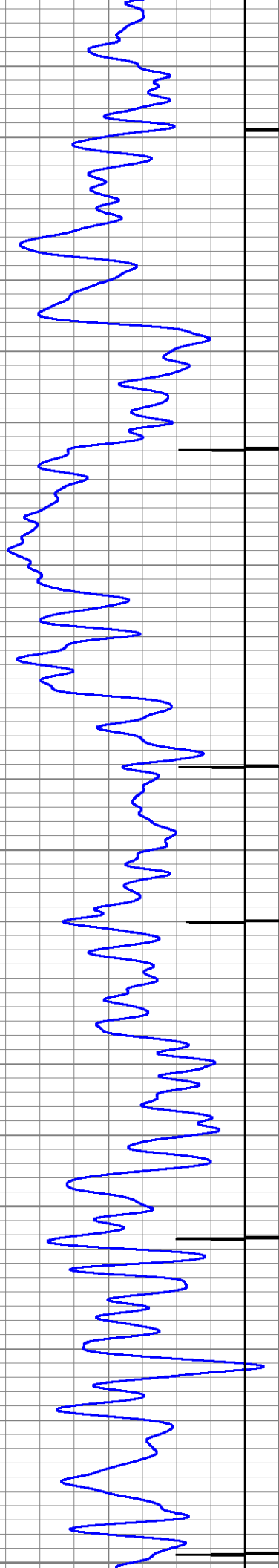




7400

7500



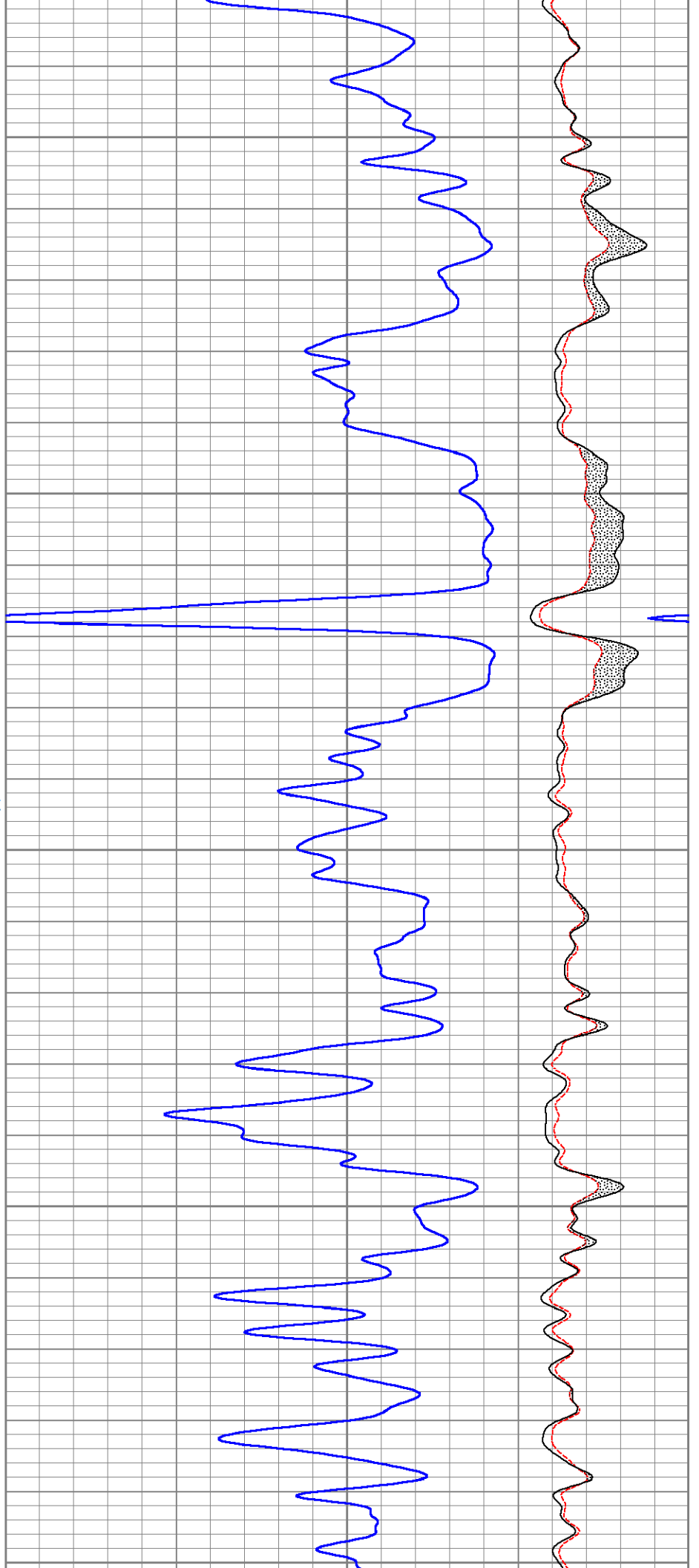


7600

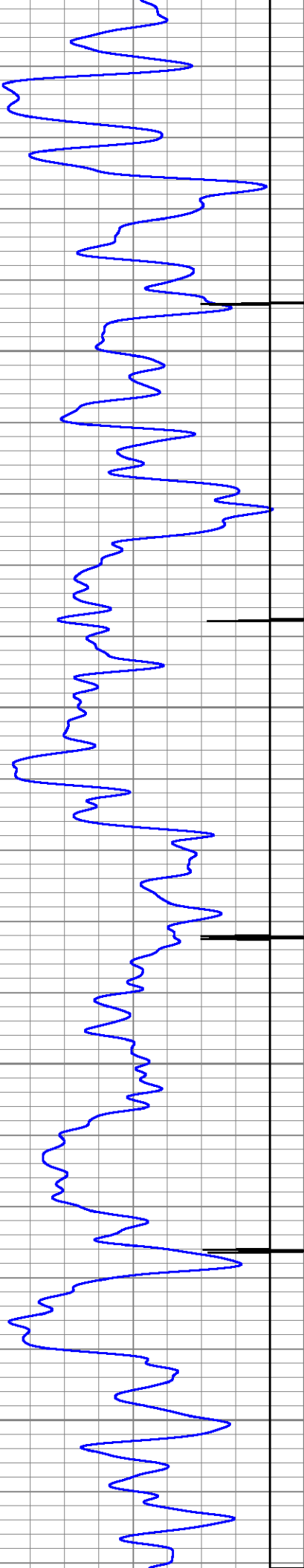
Marker Joint

7700

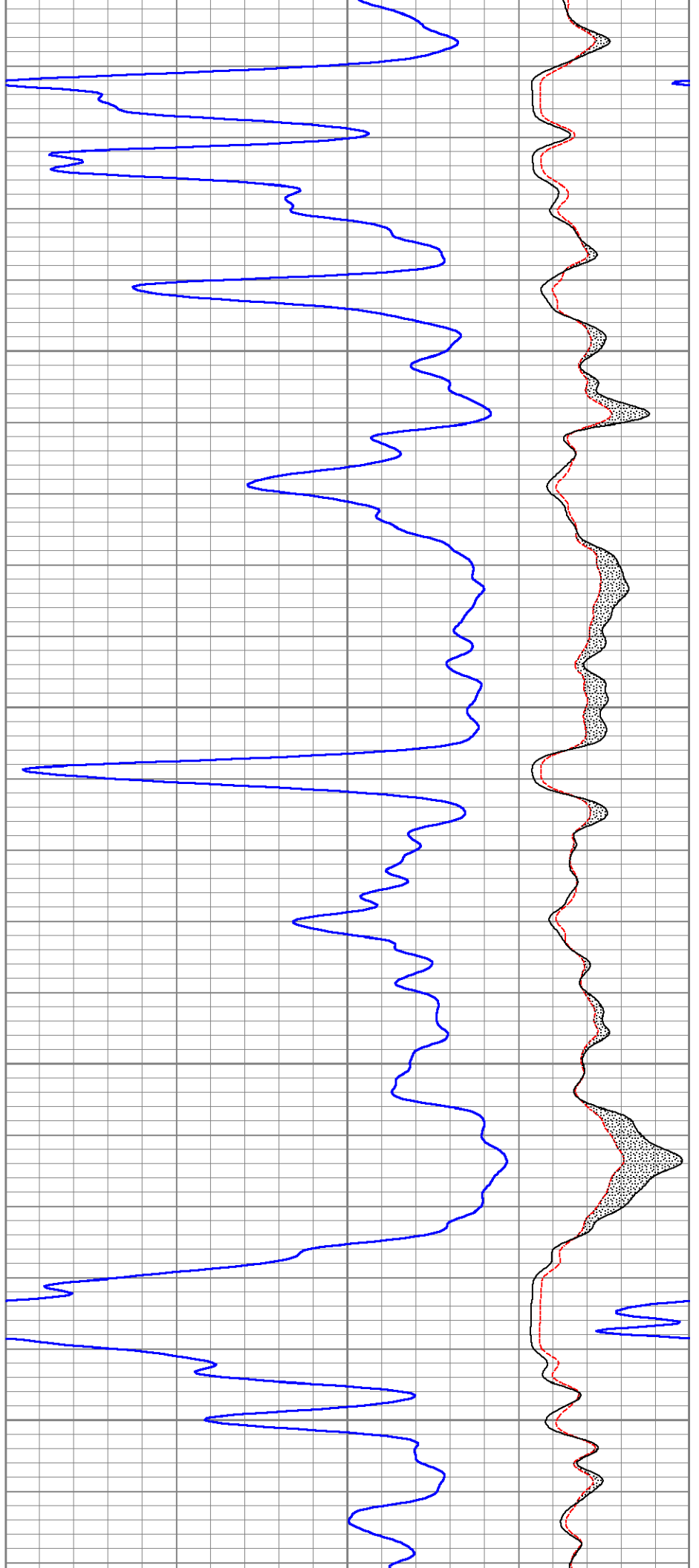
7800



7800

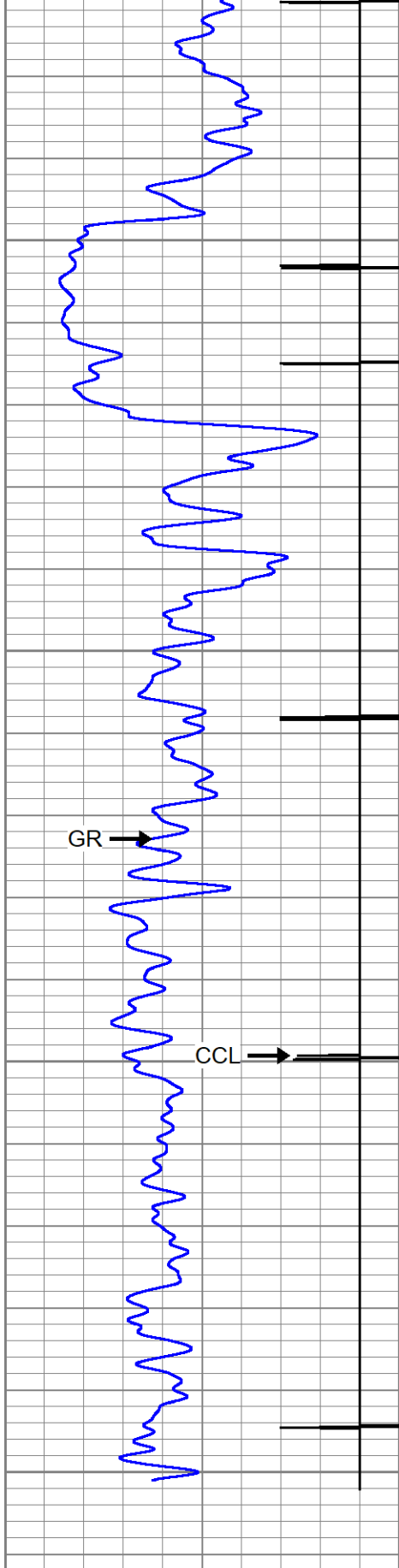


7900



8000

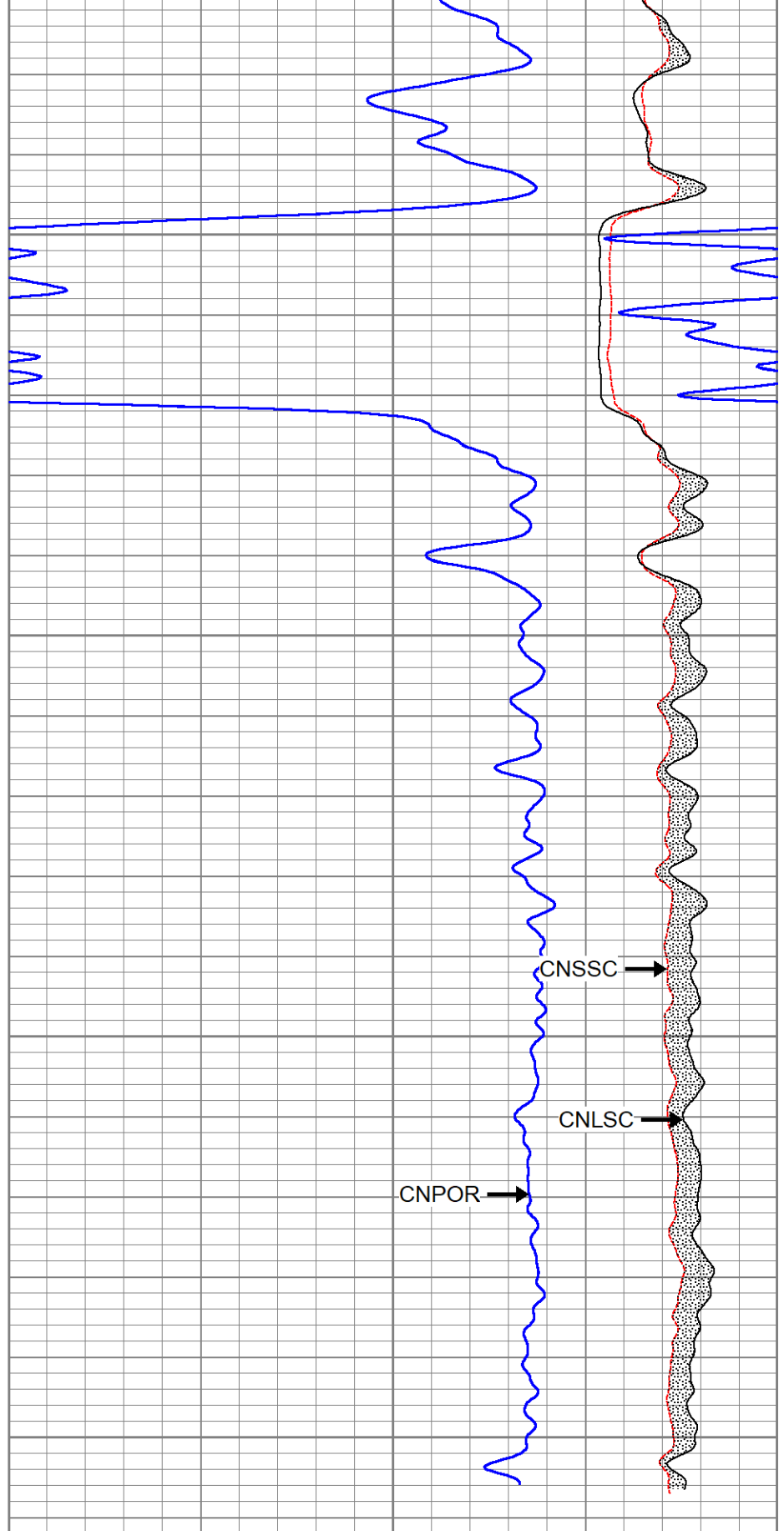




8100

8200

0	GR (GAPI)	150
9	CCL	-1

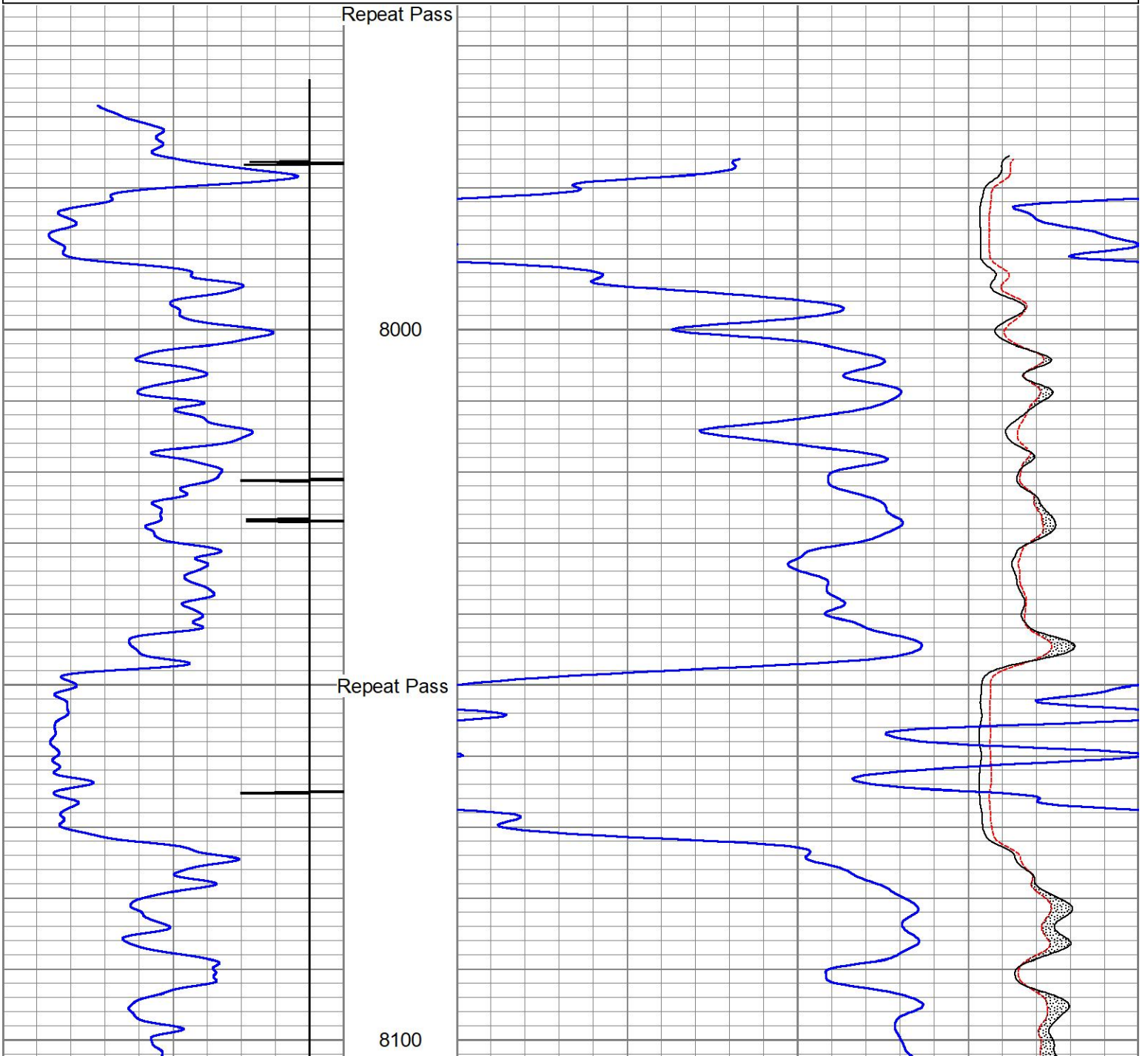


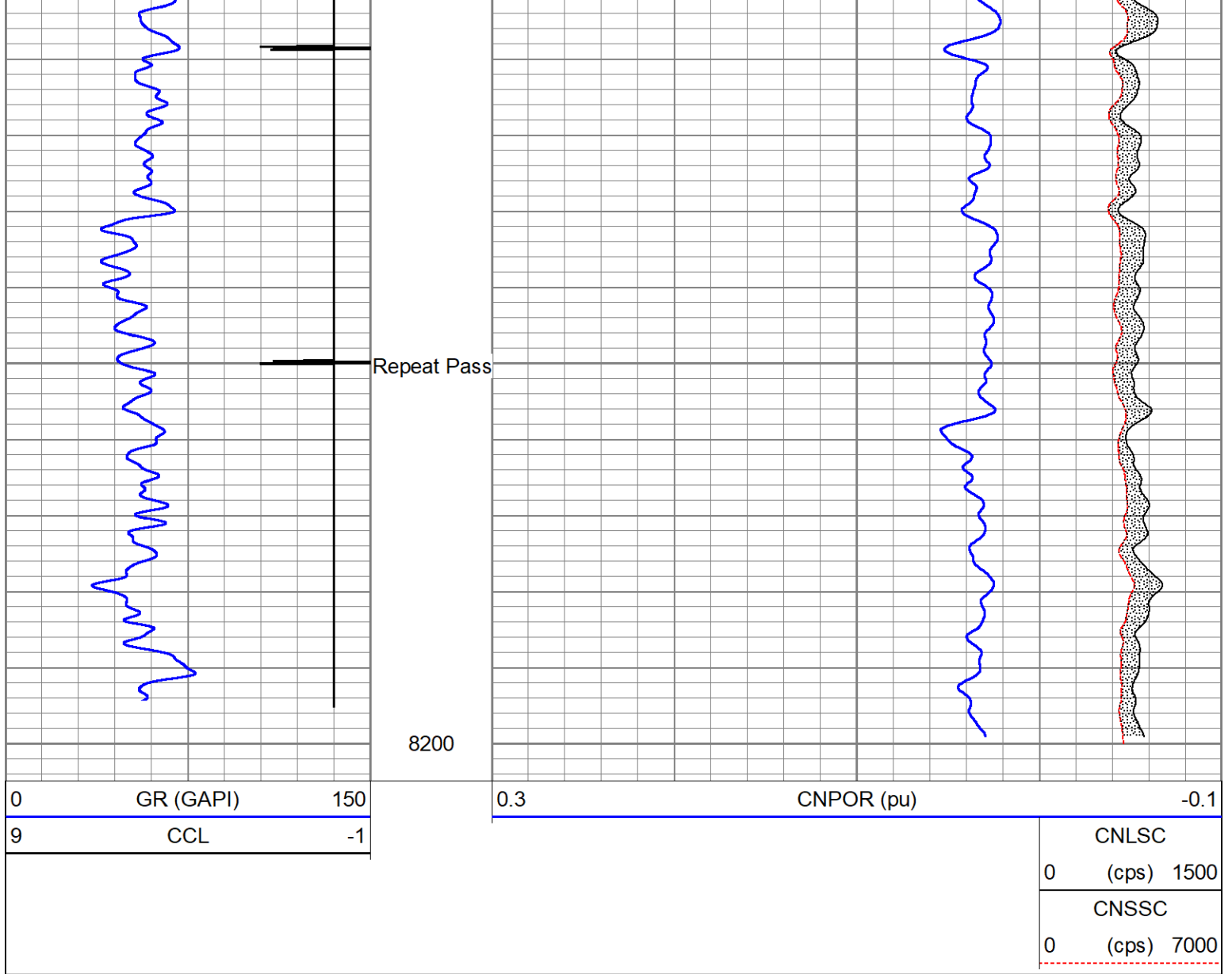
0.3	CNPOR (pu)	-0.1
-----	------------	------

CNLSC		
0	(cps)	1500
CNSSC		
0	(cps)	7000

Database File laramie 29-01 fed 0993-21-16w rcbl_cnl.db
 Dataset Pathname repeat
 Presentation Format twg_cnl
 Dataset Creation Fri Oct 03 19:12:42 2025
 Charted by Depth in Feet scaled 1:240

0	GR (GAPI)	150	0.3	CNPOR (pu)	-0.1
9	CCL	-1			
					CNLSC
					0 (cps) 1500
					CNSSC
					0 (cps) 7000





Calibration Report

Database File laramie 29-01 fed 0993-21-16w rcb_l_cnl.db
 Dataset Pathname main
 Dataset Creation Fri Oct 03 19:17:32 2025

Compensated Neutron Calibration Report

Model: CNT - 275Dig
 Serial Number: 110503dig

SHOP CALIBRATION

Mon Jan 30 15:31:15 2023

	Cal Tube	Units
Tank Ratio	11.6940	SS/LS
LS Detector	70.03	cps
SS Detector	776.60	cps
Tool Ratio	11.0899	SS/LS
Tool Gain	1.0545	----

PRE-SURVEY VERIFICATION

SS Detector	LS Detector	Measured (pu)	Target (pu)
-------------	-------------	---------------	-------------

POST-SURVEY VERIFICATION

SS Detector	LS Detector	Measured (p.u.)	Target (p.u.)
-------------	-------------	-----------------	---------------

Gamma Ray Calibration Report

Serial Number:	110255		
Tool Model:	GCT_275_0001		
Performed:	Fri May 5 10:50:03 2023		
Calibrator Value:	151.6	GAPI	
Background Reading:	65.3	cps	
Calibrator Reading:	295.7	cps	
Sensitivity:	0.6579	GAPI/cps	

Inclinometer Calibration Report

Performed:	Fri May 5 10:59:25 2023				
	Low Read.	High Read.	Low Ref.	High Ref.	
X Accelerometer	-904.00	895.00	-1.00	1.00	gee
Y Accelerometer	-908.00	898.00	-1.00	1.00	gee
Z Accelerometer	9.93	-894.87	0.00	1.00	gee

Segmented Cement Bond Log Calibration Report

Serial Number:	FW1905-150		
Tool Model:	Probe275acc		
Calibration Casing Diameter:	4.500	in	
Calibration Depth:	498.733	ft	

Master Calibration, performed Tue Sep 30 12:25:35 2025:

	Raw (v)		Calibrated (mv)		Results	
	Zero	Cal	Zero	Cal	Gain	Offset
3'	0.004	0.869	0.250	81.196	93.561	-0.079
CAL	0.001	0.755				
5'	0.006	0.711	0.250	81.196	114.834	-0.457
SUM						
S1	0.012	0.869	0.000	100.000	116.652	-1.347
S2	0.009	0.898	0.000	100.000	112.419	-0.980
S3	0.003	0.918	0.000	100.000	109.272	-0.317
S4	0.000	0.879	0.000	100.000	113.790	-0.042
S5	0.000	0.872	0.000	100.000	114.681	-0.004
S6	0.002	0.872	0.000	100.000	114.832	-0.172
S7	0.004	0.874	0.000	100.000	114.892	-0.431
S8	0.009	0.922	0.000	100.000	109.525	-0.944

Internal Reference Calibration, performed (Not Performed):

	Raw (v)		Calibrated (v)		Results	
	Zero	Cal	Zero	Cal	Gain	Offset
CAL	0.000	0.000	0.001	0.755	1.000	0.000

Air Zero Calibration, performed Tue Sep 30 07:50:19 2025:

	Raw (v)		Calibrated (v)		Results	
	Zero		Zero		Offset	
3'	0.000		0.000		0.000	
5'	0.000		0.000		0.000	
SUM						
S1	0.000		0.000		0.000	
S2	0.000		0.000		0.000	
S3	0.000		0.000		0.000	
S4	0.000		0.000		0.000	
S5	0.000		0.000		0.000	
S6	0.000		0.000		0.000	
S7	0.000		0.000		0.000	
S8	0.000		0.000		0.000	

Inclinometer Calibration Report

Performed:	(Not Performed)				
	Low Read.	High Read.	Low Ref.	High Ref.	
X Accelerometer	0.00	1.00	0.00	1.00	gee
Y Accelerometer	0.00	1.00	0.00	1.00	gee
Z Accelerometer	0.00	1.00	0.00	1.00	gee

Sensor	Offset (ft)	Schematic	Description	Length (ft)	O.D. (in)	Weight (lb)
GCT_FMWR	20.13		Cable-Head-Titan 1 7/16" Cable Head	1.00	1.44	1.00
mSec_Count	20.13		SO BS CENT-2750-4500 Slip Over 2-3/4" I.D. for 4-1/2" O.D. Casing Bow Spring Centralizer	1.33	3.25	10.00
RBT_Status	20.13		RBT8acc-Probe275acc (FW1905-150) 2.75" Radial Corrosion with accelerometer	8.75	2.75	110.00
Error_Ct	20.13					
WVFS8	14.63					
WVFS7	14.63					
WVFS6	14.63					
WVFS5	14.63					
WVFS4	14.63					
WVFS3	14.63					

