

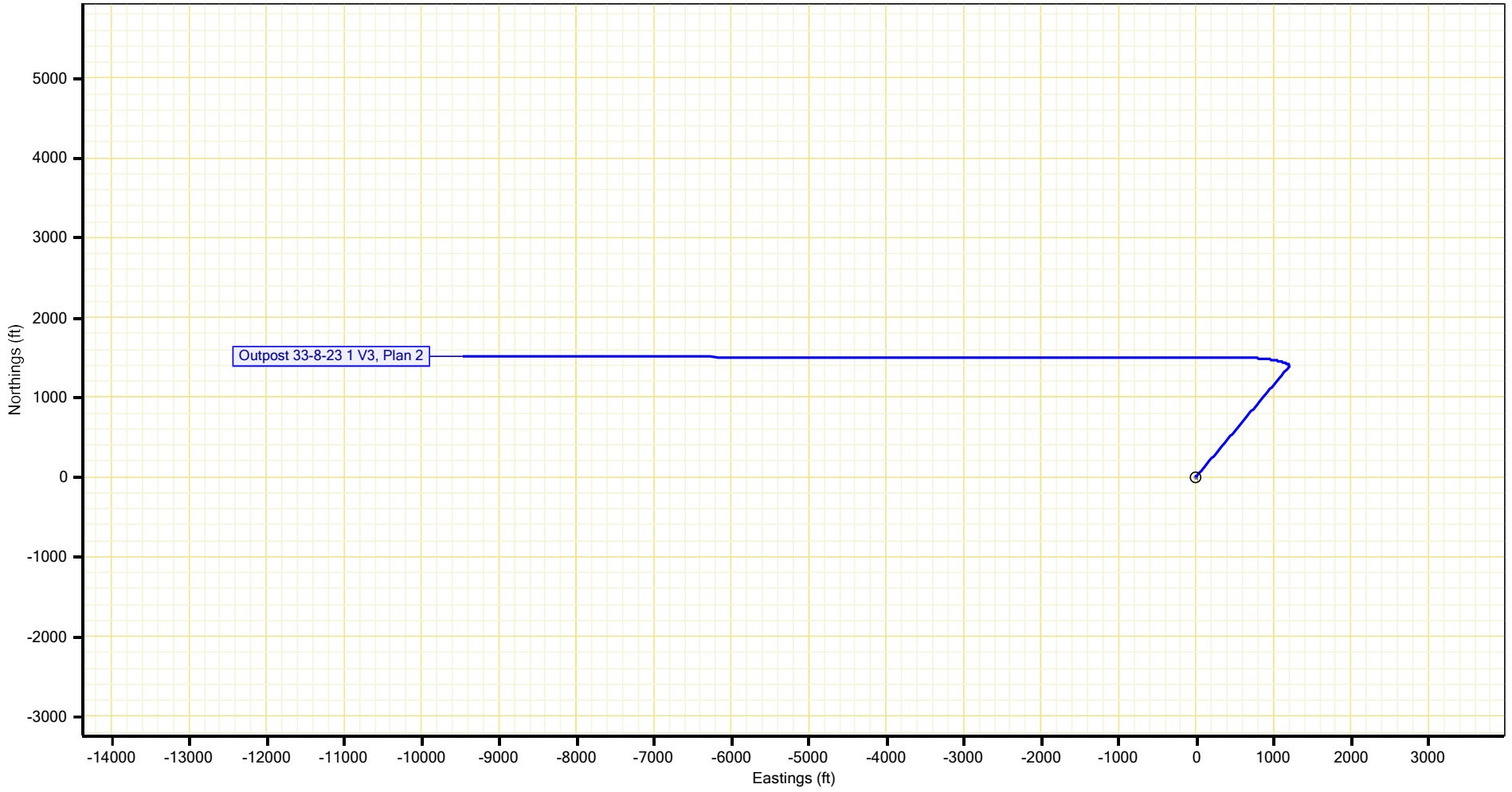
Outpost, Brown Pad V2, Outpost 33-8-23 1 V3, Plan 2

**Coleman Oil and Gas
Proposal Report**



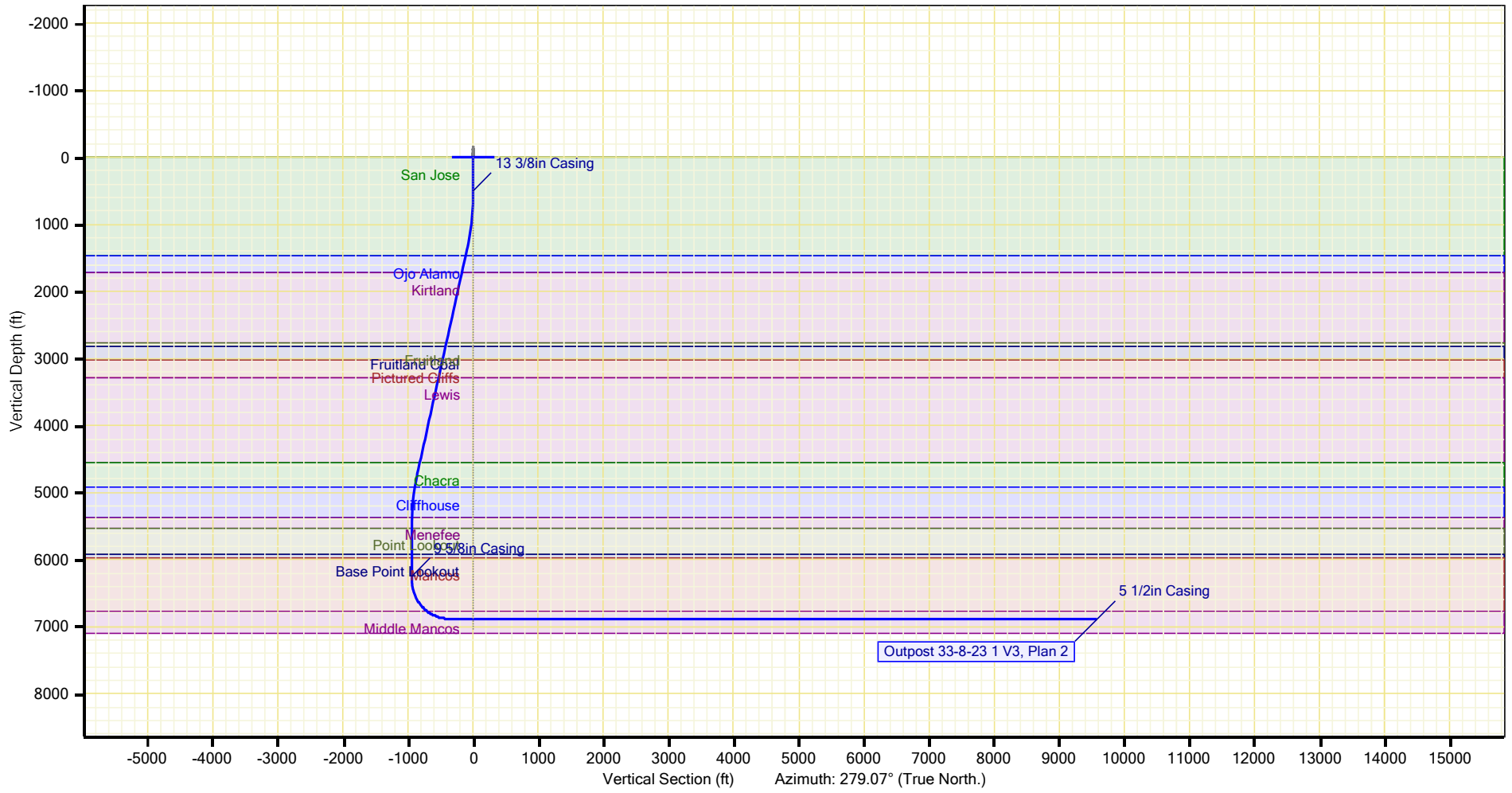


Brown Pad V2, Outpost 33-8-23 1 V3





Brown Pad V2, Outpost 33-8-23 1 V3



Coleman Oil and Gas Proposal Report



Database:	San Juan Basin	Local Coordinate Reference:	Outpost 33-8-23 1 V3
Company:		TVD Reference:	WELL @ 6604.00ft (Well Elev.)
Project:	Outpost	MD Reference:	WELL @ 6604.00ft (Well Elev.)
Site:	Brown Pad V2	North reference:	True North
Well:	Outpost 33-8-23 1 V3	Survey Calculation Method:	Minimum Curvature
Wellbore:			
Proposal:	Plan 2		

Project	Outpost		
Map System:	NAD83 Colorado State Planes	System Datum:	Mean Sea Level
Geo Datum:	NAD 1983		
Map Zone:	Southern Zone		

Site	Brown Pad V2				
Site Position:		Northing:	0.00 N	Latitude:	33.48902771° N
From:	Map	Easting:	0.00 E	Longitude:	115.33027986° W
Position Uncertainty:	0.00ft	Slot Radius:	0in	Grid Convergence:	-6.03°

Well	Outpost 33-8-23 1 V3				
Well Position: +N/-S	1212789.33ft	Northing:	1157923.07 N	Latitude:	37.07998000° N
+E/-W	2336175.10ft	Easting:	2363849.87 E	Longitude:	107.68077000° W
Position Uncertainty:	1.00ft	Wellhead Elevation:	6604.00ft	Ground Level:	6579.00ft

Magnetics	Model Name	Sample Date	Declination (°)	Dip Angle (°)	Field Strength (nT)
	IGRF 2020	10/15/2025	0.00	0.00	0.0

Proposal	Plan 2				
Audit Notes:					
Version:		Phase:		Tie On Depth:	0.00ft

Vertical Section:	Depth from TVD (ft)	+N/-S (ft)	+E/-W (ft)	Direction (°)
	0.00	0.00	0.00	279.07

Survey Program		10/16/2025			
From (ft)	To (ft)	Survey (Wellbore)	Tool Name	Description	
0.00	17698.06	Plan 2	MWD	MWD	

Plan Sections											
Measured Depth (ft)	Inclination (°)	Azimuth (°)	Vertical Depth (ft)	+N/-S (ft)	+E/-W (ft)	Dogleg Rate (°/100ft)	Build Rate (°/100ft)	Turn Rate (°/100ft)	TFO (°)	Target	
0.00	0.00	0.00	0.00	0.00	0.00						
550.00	0.00	0.00	550.00	0.00	0.00	0.0	0.0	0.0	0.00		
1355.31	24.16	40.95	1331.66	126.34	109.64	3.0	3.0	0.0	40.95		
5067.11	24.16	40.95	4718.34	1273.66	1105.36	0.0	0.0	0.0	0.00		
5872.41	0.00	0.00	5500.00	1400.00	1215.00	3.0	-3.0	0.0	178.66		
6672.41	0.00	0.00	6300.00	1400.00	1215.00	0.0	0.0	0.0	0.00	23-1 kop	
6673.41	0.00	0.00	6301.00	1400.00	1215.00	0.0	0.0	0.0	0.00		
6955.43	28.48	293.30	6571.55	1427.16	1151.93	10.1	10.1	0.0	-66.70		
6958.76	28.48	293.30	6574.46	1427.79	1150.48	0.0	0.0	0.0	0.00		
7586.24	90.00	270.09	6883.00	1494.56	645.69	10.2	9.8	-3.7	-26.01	23-1 FTP V2 T1	
7586.35	90.00	270.09	6883.00	1494.56	645.59	3.0	0.0	3.0	90.00		
17548.06	90.00	270.09	6883.00	1510.76	-9316.11	0.0	0.0	0.0	0.00	23-1 LTP V2 T1	
17548.07	90.00	270.09	6883.00	1510.76	-9316.12	3.0	0.0	3.0	90.00	23-1 LTP V2 T1	
17698.06	90.00	270.09	6883.00	1511.00	-9466.12	0.0	0.0	0.0	0.00	23-1 BHL V2 T1	

Coleman Oil and Gas Proposal Report



Database:	San Juan Basin	Local Coordinate Reference:	Outpost 33-8-23 1 V3
Company:		TVD Reference:	WELL @ 6604.00ft (Well Elev.)
Project:	Outpost	MD Reference:	WELL @ 6604.00ft (Well Elev.)
Site:	Brown Pad V2	North reference:	True North
Well:	Outpost 33-8-23 1 V3	Survey Calculation Method:	Minimum Curvature
Wellbore:			
Proposal:	Plan 2		

Planned Survey											
Measured Depth (ft)	Incl. (°)	Az. (°)	Vertical Depth (ft)	Sub Sea Depth (ft)	+N/-S (ft)	+E/-W (ft)	Vertical Section (ft)	Closure Distance (ft)	Closure Azimuth (°)	Dogleg Rate (°/100ft)	Comments/ Formations
0.00	0.00	0.00	0.00	-6604.00	0.00	0.00	0.00	0.00	0.00	0.0	MWD
100.00	0.00	0.00	100.00	-6504.00	0.00	0.00	0.00	0.00	0.00	0.0	San Jose
200.00	0.00	0.00	200.00	-6404.00	0.00	0.00	0.00	0.00	0.00	0.0	
300.00	0.00	0.00	300.00	-6304.00	0.00	0.00	0.00	0.00	0.00	0.0	
400.00	0.00	0.00	400.00	-6204.00	0.00	0.00	0.00	0.00	0.00	0.0	
500.00	0.00	0.00	500.00	-6104.00	0.00	0.00	0.00	0.00	0.00	0.0	13 3/8in Casing
550.00	0.00	0.00	550.00	-6054.00	0.00	0.00	0.00	0.00	0.00	0.0	
600.00	1.50	40.95	599.99	-6004.01	0.49	0.43	-0.35	0.65	40.95	3.0	
700.00	4.50	40.95	699.85	-5904.15	4.45	3.86	-3.11	5.89	40.95	3.0	
800.00	7.50	40.95	799.29	-5804.71	12.34	10.71	-8.63	16.34	40.95	3.0	
900.00	10.50	40.95	898.04	-5705.96	24.15	20.96	-16.89	31.98	40.95	3.0	
1000.00	13.50	40.95	995.85	-5608.15	39.85	34.59	-27.87	52.77	40.95	3.0	
1100.00	16.50	40.95	1092.43	-5511.57	59.40	51.55	-41.54	78.65	40.95	3.0	
1200.00	19.50	40.95	1187.52	-5416.48	82.73	71.80	-57.86	109.55	40.95	3.0	
1300.00	22.50	40.95	1280.87	-5323.13	109.80	95.29	-76.79	145.38	40.95	3.0	
1355.31	24.16	40.95	1331.66	-5272.34	126.34	109.64	-88.36	167.28	40.95	3.0	
1400.00	24.16	40.95	1372.43	-5231.57	140.15	121.63	-98.02	185.57	40.95	0.0	
1500.00	24.16	40.95	1463.67	-5140.33	171.06	148.46	-119.64	226.50	40.95	0.0	
1506.93	24.16	40.95	1470.00	-5134.00	173.21	150.32	-121.14	229.34	40.95	0.0	Ojo Alamo
1600.00	24.16	40.95	1554.92	-5049.08	201.97	175.28	-141.26	267.43	40.95	0.0	
1700.00	24.16	40.95	1646.16	-4957.84	232.88	202.11	-162.87	308.36	40.95	0.0	
1778.74	24.16	40.95	1718.00	-4886.00	257.22	223.23	-179.90	340.58	40.95	0.0	Kirtland
1800.00	24.16	40.95	1737.40	-4866.60	263.79	228.94	-184.49	349.28	40.95	0.0	
1900.00	24.16	40.95	1828.64	-4775.36	294.70	255.76	-206.11	390.21	40.95	0.0	
2000.00	24.16	40.95	1919.88	-4684.12	325.61	282.59	-227.73	431.14	40.95	0.0	
2100.00	24.16	40.95	2011.12	-4592.88	356.52	309.41	-249.35	472.06	40.95	0.0	
2200.00	24.16	40.95	2102.36	-4501.64	387.43	336.24	-270.96	512.99	40.95	0.0	
2300.00	24.16	40.95	2193.60	-4410.40	418.34	363.06	-292.58	553.92	40.95	0.0	
2400.00	24.16	40.95	2284.84	-4319.16	449.25	389.89	-314.20	594.85	40.95	0.0	
2500.00	24.16	40.95	2376.09	-4227.91	480.16	416.71	-335.82	635.77	40.95	0.0	
2600.00	24.16	40.95	2467.33	-4136.67	511.07	443.54	-357.44	676.70	40.95	0.0	
2700.00	24.16	40.95	2558.57	-4045.43	541.98	470.37	-379.05	717.63	40.95	0.0	
2800.00	24.16	40.95	2649.81	-3954.19	572.90	497.19	-400.67	758.56	40.95	0.0	
2900.00	24.16	40.95	2741.05	-3862.95	603.81	524.02	-422.29	799.48	40.95	0.0	
2929.54	24.16	40.95	2768.00	-3836.00	612.94	531.94	-428.68	811.57	40.95	0.0	Fruitland
2989.82	24.16	40.95	2823.00	-3781.00	631.57	548.11	-441.71	836.24	40.95	0.0	Fruitland Coal
3000.00	24.16	40.95	2832.29	-3771.71	634.72	550.84	-443.91	840.41	40.95	0.0	
3100.00	24.16	40.95	2923.53	-3680.47	665.63	577.67	-465.53	881.34	40.95	0.0	
3200.00	24.16	40.95	3014.77	-3589.23	696.54	604.49	-487.14	922.27	40.95	0.0	
3210.11	24.16	40.95	3024.00	-3580.00	699.66	607.21	-489.33	926.40	40.95	0.0	Pictured Cliffs
3300.00	24.16	40.95	3106.02	-3497.98	727.45	631.32	-508.76	963.19	40.95	0.0	
3400.00	24.16	40.95	3197.26	-3406.74	758.36	658.14	-530.38	1004.12	40.95	0.0	
3498.36	24.16	40.95	3287.00	-3317.00	788.76	684.53	-551.64	1044.38	40.95	0.0	Lewis
3500.00	24.16	40.95	3288.50	-3315.50	789.27	684.97	-552.00	1045.05	40.95	0.0	
3600.00	24.16	40.95	3379.74	-3224.26	820.18	711.80	-573.62	1085.98	40.95	0.0	
3700.00	24.16	40.95	3470.98	-3133.02	851.09	738.62	-595.23	1126.90	40.95	0.0	
3800.00	24.16	40.95	3562.22	-3041.78	882.00	765.45	-616.85	1167.83	40.95	0.0	
3900.00	24.16	40.95	3653.46	-2950.54	912.91	792.27	-638.47	1208.76	40.95	0.0	
4000.00	24.16	40.95	3744.70	-2859.30	943.82	819.10	-660.09	1249.69	40.95	0.0	
4100.00	24.16	40.95	3835.94	-2768.06	974.73	845.92	-681.71	1290.61	40.95	0.0	

Coleman Oil and Gas Proposal Report



Database:	San Juan Basin	Local Coordinate Reference:	Outpost 33-8-23 1 V3
Company:		TVD Reference:	WELL @ 6604.00ft (Well Elev.)
Project:	Outpost	MD Reference:	WELL @ 6604.00ft (Well Elev.)
Site:	Brown Pad V2	North reference:	True North
Well:	Outpost 33-8-23 1 V3	Survey Calculation Method:	Minimum Curvature
Wellbore:			
Proposal:	Plan 2		

Planned Survey											
Measured Depth (ft)	Incl. (°)	Az. (°)	Vertical Depth (ft)	Sub Sea Depth (ft)	+N/-S (ft)	+E/-W (ft)	Vertical Section (ft)	Closure Distance (ft)	Closure Azimuth (°)	Dogleg Rate (°/100ft)	Comments/ Formations
4200.00	24.16	40.95	3927.19	-2676.81	1005.64	872.75	-703.32	1331.54	40.95	0.0	
4300.00	24.16	40.95	4018.43	-2585.57	1036.55	899.58	-724.94	1372.47	40.95	0.0	
4400.00	24.16	40.95	4109.67	-2494.33	1067.46	926.40	-746.56	1413.39	40.95	0.0	
4500.00	24.16	40.95	4200.91	-2403.09	1098.37	953.23	-768.18	1454.32	40.95	0.0	
4600.00	24.16	40.95	4292.15	-2311.85	1129.28	980.05	-789.80	1495.25	40.95	0.0	
4700.00	24.16	40.95	4383.39	-2220.61	1160.19	1006.88	-811.41	1536.18	40.95	0.0	
4800.00	24.16	40.95	4474.63	-2129.37	1191.10	1033.70	-833.03	1577.10	40.95	0.0	
4885.89	24.16	40.95	4553.00	-2051.00	1217.65	1056.74	-851.60	1612.26	40.95	0.0	Chacra
4900.00	24.16	40.95	4565.87	-2038.13	1222.01	1060.53	-854.65	1618.03	40.95	0.0	
5000.00	24.16	40.95	4657.12	-1946.88	1252.92	1087.35	-876.27	1658.96	40.95	0.0	
5067.11	24.16	40.95	4718.34	-1885.66	1273.66	1105.36	-890.77	1686.42	40.95	0.0	
5100.00	23.17	40.95	4748.47	-1855.53	1283.63	1114.01	-897.75	1699.63	40.95	3.0	
5200.00	20.17	40.95	4841.39	-1762.61	1311.52	1138.21	-917.25	1736.55	40.95	3.0	
5281.01	17.74	40.95	4918.00	-1686.00	1331.40	1155.46	-931.15	1762.87	40.95	3.0	Cliffhouse
5300.00	17.17	40.95	4936.12	-1667.88	1335.70	1159.20	-934.16	1768.57	40.95	3.0	
5400.00	14.17	40.95	5032.39	-1571.61	1356.10	1176.90	-948.43	1795.58	40.95	3.0	
5500.00	11.17	40.95	5129.94	-1474.06	1372.66	1191.28	-960.01	1817.51	40.95	3.0	
5600.00	8.17	40.95	5228.51	-1375.49	1385.35	1202.29	-968.89	1834.31	40.95	3.0	
5700.00	5.17	40.95	5327.82	-1276.18	1394.13	1209.90	-975.03	1845.93	40.95	3.0	
5745.32	3.81	40.95	5373.00	-1231.00	1396.81	1212.23	-976.90	1849.48	40.95	3.0	Menefee
5800.00	2.17	40.95	5427.60	-1176.40	1398.96	1214.10	-978.41	1852.33	40.95	3.0	
5872.41	0.00	0.00	5500.00	-1104.00	1400.00	1215.00	-979.13	1853.71	40.95	3.0	
5900.00	0.00	0.00	5527.59	-1076.41	1400.00	1215.00	-979.13	1853.71	40.95	0.0	
5905.41	0.00	0.00	5533.00	-1071.00	1400.00	1215.00	-979.13	1853.71	40.95	0.0	Point Lookout
6000.00	0.00	0.00	5627.59	-976.41	1400.00	1215.00	-979.13	1853.71	40.95	0.0	
6100.00	0.00	0.00	5727.59	-876.41	1400.00	1215.00	-979.13	1853.71	40.95	0.0	
6200.00	0.00	0.00	5827.59	-776.41	1400.00	1215.00	-979.13	1853.71	40.95	0.0	
6295.41	0.00	0.00	5923.00	-681.00	1400.00	1215.00	-979.13	1853.71	40.95	0.0	Base Point Lookout
6300.00	0.00	0.00	5927.59	-676.41	1400.00	1215.00	-979.13	1853.71	40.95	0.0	
6347.41	0.00	0.00	5975.00	-629.00	1400.00	1215.00	-979.13	1853.71	40.95	0.0	Mancos
6400.00	0.00	0.00	6027.59	-576.41	1400.00	1215.00	-979.13	1853.71	40.95	0.0	
6500.00	0.00	0.00	6127.59	-476.41	1400.00	1215.00	-979.13	1853.71	40.95	0.0	
6600.00	0.00	0.00	6227.59	-376.41	1400.00	1215.00	-979.13	1853.71	40.95	0.0	
6623.00	0.00	0.00	6250.59	-353.41	1400.00	1215.00	-979.13	1853.71	40.95	0.0	9 5/8in Casing
6672.41	0.00	0.00	6300.00	-304.00	1400.00	1215.00	-979.13	1853.71	40.95	0.0	23-1 kop
6673.41	0.00	0.00	6301.00	-303.00	1400.00	1215.00	-979.13	1853.71	40.95	0.0	
6680.00	0.67	293.30	6307.58	-296.42	1400.02	1214.96	-979.10	1853.69	40.95	10.1	
6700.00	2.69	293.30	6327.58	-276.42	1400.25	1214.43	-978.53	1853.52	40.93	10.1	
6720.00	4.71	293.30	6347.53	-256.47	1400.76	1213.24	-977.28	1853.13	40.90	10.1	
6740.00	6.73	293.30	6367.43	-236.57	1401.54	1211.42	-975.35	1852.53	40.84	10.1	
6760.00	8.75	293.30	6387.25	-216.75	1402.61	1208.94	-972.74	1851.72	40.76	10.1	
6780.00	10.77	293.30	6406.96	-197.04	1403.95	1205.83	-969.46	1850.70	40.66	10.1	
6800.00	12.79	293.30	6426.54	-177.46	1405.56	1202.08	-965.50	1849.49	40.54	10.1	
6820.00	14.81	293.30	6445.96	-158.04	1407.45	1197.70	-960.88	1848.08	40.40	10.1	
6840.00	16.83	293.30	6465.20	-138.80	1409.61	1192.70	-955.59	1846.49	40.24	10.1	
6860.00	18.85	293.30	6484.24	-119.76	1412.03	1187.07	-949.66	1844.71	40.05	10.1	
6880.00	20.87	293.30	6503.05	-100.95	1414.71	1180.83	-943.07	1842.76	39.85	10.1	
6900.00	22.89	293.30	6521.61	-82.39	1417.66	1173.99	-935.85	1840.66	39.63	10.1	
6920.00	24.91	293.30	6539.89	-64.11	1420.87	1166.55	-928.00	1838.39	39.39	10.1	
6940.00	26.93	293.30	6557.88	-46.12	1424.32	1158.52	-919.53	1835.99	39.12	10.1	

Coleman Oil and Gas Proposal Report



Database:	San Juan Basin	Local Coordinate Reference:	Outpost 33-8-23 1 V3
Company:		TVD Reference:	WELL @ 6604.00ft (Well Elev.)
Project:	Outpost	MD Reference:	WELL @ 6604.00ft (Well Elev.)
Site:	Brown Pad V2	North reference:	True North
Well:	Outpost 33-8-23 1 V3	Survey Calculation Method:	Minimum Curvature
Wellbore:			
Proposal:	Plan 2		

Planned Survey											
Measured Depth (ft)	Incl. (°)	Az. (°)	Vertical Depth (ft)	Sub Sea Depth (ft)	+N/-S (ft)	+E/-W (ft)	Vertical Section (ft)	Closure Distance (ft)	Closure Azimuth (°)	Dogleg Rate (°/100ft)	Comments/Formations
6955.43	28.48	293.30	6571.55	-32.45	1427.16	1151.93	-912.57	1834.05	38.91	10.1	
6958.76	28.48	293.30	6574.46	-29.54	1427.79	1150.48	-911.04	1833.62	38.86	0.0	
6960.00	28.60	293.18	6575.56	-28.44	1428.02	1149.93	-910.46	1833.46	38.84	10.2	
6980.00	30.45	291.42	6592.96	-11.04	1431.76	1140.81	-900.87	1830.68	38.55	10.2	
7000.00	32.31	289.85	6610.04	6.04	1435.42	1131.07	-890.66	1827.50	38.24	10.2	
7020.00	34.20	288.43	6626.76	22.76	1439.02	1120.70	-879.87	1823.94	37.91	10.2	
7040.00	36.10	287.14	6643.11	39.11	1442.53	1109.74	-868.49	1820.01	37.57	10.2	
7060.00	38.01	285.97	6659.07	55.07	1445.96	1098.19	-856.54	1815.72	37.22	10.2	
7080.00	39.94	284.89	6674.62	70.62	1449.31	1086.06	-844.04	1811.08	36.85	10.2	
7100.00	41.87	283.89	6689.74	85.74	1452.56	1073.38	-831.00	1806.12	36.46	10.2	
7120.00	43.81	282.97	6704.40	100.40	1455.71	1060.15	-817.44	1800.84	36.06	10.2	
7140.00	45.76	282.11	6718.59	114.59	1458.77	1046.40	-803.38	1795.26	35.65	10.2	
7160.00	47.71	281.30	6732.30	128.30	1461.72	1032.14	-788.83	1789.40	35.23	10.2	
7180.00	49.67	280.55	6745.50	141.50	1464.57	1017.39	-773.81	1783.27	34.79	10.2	
7200.00	51.64	279.83	6758.18	154.18	1467.31	1002.17	-758.35	1776.89	34.33	10.2	
7220.00	53.60	279.16	6770.32	166.32	1469.93	986.49	-742.46	1770.27	33.87	10.2	
7224.53	54.05	279.01	6773.00	169.00	1470.50	982.88	-738.80	1768.74	33.76	10.2	Middle Mancos
7240.00	55.58	278.52	6781.91	177.91	1472.43	970.39	-726.16	1763.43	33.39	10.2	
7260.00	57.55	277.90	6792.93	188.93	1474.81	953.87	-709.47	1756.40	32.89	10.2	
7280.00	59.53	277.32	6803.37	199.37	1477.07	936.96	-692.42	1749.18	32.39	10.2	
7300.00	61.51	276.75	6813.21	209.21	1479.20	919.68	-675.02	1741.80	31.87	10.2	
7320.00	63.49	276.21	6822.45	218.45	1481.21	902.05	-657.30	1734.26	31.34	10.2	
7340.00	65.48	275.69	6831.06	227.06	1483.08	884.10	-639.28	1726.60	30.80	10.2	
7360.00	67.46	275.18	6839.05	235.05	1484.81	865.85	-620.98	1718.83	30.25	10.2	
7380.00	69.45	274.69	6846.39	242.39	1486.41	847.32	-602.43	1710.95	29.68	10.2	
7400.00	71.44	274.21	6853.08	249.08	1487.87	828.53	-583.64	1703.00	29.11	10.2	
7420.00	73.43	273.74	6859.12	255.12	1489.19	809.51	-564.65	1694.99	28.53	10.2	
7440.00	75.42	273.28	6864.49	260.49	1490.37	790.28	-545.48	1686.93	27.94	10.2	
7460.00	77.41	272.83	6869.19	265.19	1491.41	770.87	-526.14	1678.85	27.33	10.2	
7480.00	79.41	272.38	6873.20	269.20	1492.30	751.30	-506.68	1670.75	26.72	10.2	
7500.00	81.40	271.94	6876.54	272.54	1493.04	731.59	-487.10	1662.65	26.10	10.2	
7520.00	83.39	271.51	6879.19	275.19	1493.64	711.78	-467.44	1654.56	25.48	10.2	
7540.00	85.39	271.08	6881.14	277.14	1494.09	691.88	-447.72	1646.51	24.85	10.2	
7560.00	87.38	270.65	6882.40	278.40	1494.39	671.92	-427.97	1638.50	24.21	10.2	
7580.00	89.38	270.22	6882.97	278.97	1494.54	651.93	-408.20	1630.54	23.57	10.2	
7586.24	90.00	270.09	6883.00	279.00	1494.56	645.69	-402.04	1628.07	23.37	10.2	23-1 FTP V2 T1
7586.35	90.00	270.09	6883.00	279.00	1494.56	645.59	-401.93	1628.03	23.36	3.0	
7600.00	90.00	270.09	6883.00	279.00	1494.58	631.93	-388.45	1622.68	22.92	0.0	
7700.00	90.00	270.09	6883.00	279.00	1494.74	531.93	-289.67	1586.57	19.59	0.0	
7800.00	90.00	270.09	6883.00	279.00	1494.90	431.93	-190.90	1556.05	16.12	0.0	
7900.00	90.00	270.09	6883.00	279.00	1495.07	331.93	-92.12	1531.47	12.52	0.0	
8000.00	90.00	270.09	6883.00	279.00	1495.23	231.93	6.66	1513.11	8.82	0.0	
8100.00	90.00	270.09	6883.00	279.00	1495.39	131.93	105.43	1501.20	5.04	0.0	
8200.00	90.00	270.09	6883.00	279.00	1495.55	31.93	204.21	1495.90	1.22	0.0	
8300.00	90.00	270.09	6883.00	279.00	1495.72	-68.07	302.98	1497.27	357.39	0.0	
8400.00	90.00	270.09	6883.00	279.00	1495.88	-168.07	401.76	1505.29	353.59	0.0	
8500.00	90.00	270.09	6883.00	279.00	1496.04	-268.07	500.53	1519.87	349.84	0.0	
8600.00	90.00	270.09	6883.00	279.00	1496.21	-368.07	599.31	1540.81	346.18	0.0	
8700.00	90.00	270.09	6883.00	279.00	1496.37	-468.07	698.08	1567.87	342.63	0.0	
8800.00	90.00	270.09	6883.00	279.00	1496.53	-568.07	796.86	1600.72	339.21	0.0	

Coleman Oil and Gas Proposal Report



Database:	San Juan Basin	Local Coordinate Reference:	Outpost 33-8-23 1 V3
Company:		TVD Reference:	WELL @ 6604.00ft (Well Elev.)
Project:	Outpost	MD Reference:	WELL @ 6604.00ft (Well Elev.)
Site:	Brown Pad V2	North reference:	True North
Well:	Outpost 33-8-23 1 V3	Survey Calculation Method:	Minimum Curvature
Wellbore:			
Proposal:	Plan 2		

Planned Survey											
Measured Depth (ft)	Incl. (°)	Az. (°)	Vertical Depth (ft)	Sub Sea Depth (ft)	+N/-S (ft)	+E/-W (ft)	Vertical Section (ft)	Closure Distance (ft)	Closure Azimuth (°)	Dogleg Rate (°/100ft)	Comments/ Formations
8900.00	90.00	270.09	6883.00	279.00	1496.69	-668.07	895.63	1639.03	335.95	0.0	
9000.00	90.00	270.09	6883.00	279.00	1496.86	-768.07	994.41	1682.41	332.84	0.0	
9100.00	90.00	270.09	6883.00	279.00	1497.02	-868.07	1093.18	1730.49	329.89	0.0	
9200.00	90.00	270.09	6883.00	279.00	1497.18	-968.07	1191.96	1782.89	327.11	0.0	
9300.00	90.00	270.09	6883.00	279.00	1497.34	-1068.07	1290.74	1839.24	324.50	0.0	
9400.00	90.00	270.09	6883.00	279.00	1497.51	-1168.07	1389.51	1899.18	322.05	0.0	
9500.00	90.00	270.09	6883.00	279.00	1497.67	-1268.07	1488.29	1962.40	319.75	0.0	
9600.00	90.00	270.09	6883.00	279.00	1497.83	-1368.07	1587.06	2028.57	317.59	0.0	
9700.00	90.00	270.09	6883.00	279.00	1497.99	-1468.07	1685.84	2097.43	315.58	0.0	
9800.00	90.00	270.09	6883.00	279.00	1498.16	-1568.07	1784.61	2168.71	313.69	0.0	
9900.00	90.00	270.09	6883.00	279.00	1498.32	-1668.06	1883.39	2242.19	311.93	0.0	
10000.00	90.00	270.09	6883.00	279.00	1498.48	-1768.06	1982.16	2317.65	310.28	0.0	
10100.00	90.00	270.09	6883.00	279.00	1498.65	-1868.06	2080.94	2394.91	308.74	0.0	
10200.00	90.00	270.09	6883.00	279.00	1498.81	-1968.06	2179.71	2473.80	307.29	0.0	
10300.00	90.00	270.09	6883.00	279.00	1498.97	-2068.06	2278.49	2554.17	305.94	0.0	
10400.00	90.00	270.09	6883.00	279.00	1499.13	-2168.06	2377.26	2635.89	304.66	0.0	
10500.00	90.00	270.09	6883.00	279.00	1499.30	-2268.06	2476.04	2718.82	303.47	0.0	
10600.00	90.00	270.09	6883.00	279.00	1499.46	-2368.06	2574.82	2802.87	302.34	0.0	
10700.00	90.00	270.09	6883.00	279.00	1499.62	-2468.06	2673.59	2887.94	301.28	0.0	
10800.00	90.00	270.09	6883.00	279.00	1499.78	-2568.06	2772.37	2973.94	300.29	0.0	
10900.00	90.00	270.09	6883.00	279.00	1499.95	-2668.06	2871.14	3060.78	299.34	0.0	
11000.00	90.00	270.09	6883.00	279.00	1500.11	-2768.06	2969.92	3148.41	298.45	0.0	
11100.00	90.00	270.09	6883.00	279.00	1500.27	-2868.06	3068.69	3236.76	297.61	0.0	
11200.00	90.00	270.09	6883.00	279.00	1500.43	-2968.06	3167.47	3325.76	296.82	0.0	
11300.00	90.00	270.09	6883.00	279.00	1500.60	-3068.06	3266.24	3415.38	296.06	0.0	
11400.00	90.00	270.09	6883.00	279.00	1500.76	-3168.06	3365.02	3505.55	295.35	0.0	
11500.00	90.00	270.09	6883.00	279.00	1500.92	-3268.06	3463.79	3596.25	294.67	0.0	
11600.00	90.00	270.09	6883.00	279.00	1501.09	-3368.06	3562.57	3687.42	294.02	0.0	
11700.00	90.00	270.09	6883.00	279.00	1501.25	-3468.06	3661.34	3779.05	293.41	0.0	
11800.00	90.00	270.09	6883.00	279.00	1501.41	-3568.06	3760.12	3871.09	292.82	0.0	
11900.00	90.00	270.09	6883.00	279.00	1501.57	-3668.06	3858.90	3963.51	292.26	0.0	
12000.00	90.00	270.09	6883.00	279.00	1501.74	-3768.06	3957.67	4056.29	291.73	0.0	
12100.00	90.00	270.09	6883.00	279.00	1501.90	-3868.06	4056.45	4149.41	291.22	0.0	
12200.00	90.00	270.09	6883.00	279.00	1502.06	-3968.06	4155.22	4242.84	290.73	0.0	
12300.00	90.00	270.09	6883.00	279.00	1502.22	-4068.06	4254.00	4336.57	290.27	0.0	
12400.00	90.00	270.09	6883.00	279.00	1502.39	-4168.06	4352.77	4430.56	289.82	0.0	
12500.00	90.00	270.09	6883.00	279.00	1502.55	-4268.06	4451.55	4524.82	289.39	0.0	
12600.00	90.00	270.09	6883.00	279.00	1502.71	-4368.06	4550.32	4619.32	288.98	0.0	
12700.00	90.00	270.09	6883.00	279.00	1502.87	-4468.06	4649.10	4714.04	288.59	0.0	
12800.00	90.00	270.09	6883.00	279.00	1503.04	-4568.06	4747.87	4808.98	288.21	0.0	
12900.00	90.00	270.09	6883.00	279.00	1503.20	-4668.06	4846.65	4904.12	287.85	0.0	
13000.00	90.00	270.09	6883.00	279.00	1503.36	-4768.06	4945.42	4999.45	287.50	0.0	
13100.00	90.00	270.09	6883.00	279.00	1503.52	-4868.06	5044.20	5094.96	287.16	0.0	
13200.00	90.00	270.09	6883.00	279.00	1503.69	-4968.06	5142.98	5190.64	286.84	0.0	
13300.00	90.00	270.09	6883.00	279.00	1503.85	-5068.06	5241.75	5286.47	286.53	0.0	
13400.00	90.00	270.09	6883.00	279.00	1504.01	-5168.06	5340.53	5382.46	286.23	0.0	
13500.00	90.00	270.09	6883.00	279.00	1504.18	-5268.06	5439.30	5478.59	285.94	0.0	
13600.00	90.00	270.09	6883.00	279.00	1504.34	-5368.06	5538.08	5574.86	285.65	0.0	
13700.00	90.00	270.09	6883.00	279.00	1504.50	-5468.06	5636.85	5671.26	285.38	0.0	
13800.00	90.00	270.09	6883.00	279.00	1504.66	-5568.06	5735.63	5767.78	285.12	0.0	

Coleman Oil and Gas Proposal Report



Database:	San Juan Basin	Local Coordinate Reference:	Outpost 33-8-23 1 V3
Company:		TVD Reference:	WELL @ 6604.00ft (Well Elev.)
Project:	Outpost	MD Reference:	WELL @ 6604.00ft (Well Elev.)
Site:	Brown Pad V2	North reference:	True North
Well:	Outpost 33-8-23 1 V3	Survey Calculation Method:	Minimum Curvature
Wellbore:			
Proposal:	Plan 2		

Planned Survey											
Measured Depth (ft)	Incl. (°)	Az. (°)	Vertical Depth (ft)	Sub Sea Depth (ft)	+N/-S (ft)	+E/-W (ft)	Vertical Section (ft)	Closure Distance (ft)	Closure Azimuth (°)	Dogleg Rate (°/100ft)	Comments/Formations
13900.00	90.00	270.09	6883.00	279.00	1504.83	-5668.06	5834.40	5864.42	284.87	0.0	
14000.00	90.00	270.09	6883.00	279.00	1504.99	-5768.06	5933.18	5961.17	284.62	0.0	
14100.00	90.00	270.09	6883.00	279.00	1505.15	-5868.06	6031.95	6058.02	284.39	0.0	
14200.00	90.00	270.09	6883.00	279.00	1505.31	-5968.06	6130.73	6154.97	284.16	0.0	
14300.00	90.00	270.09	6883.00	279.00	1505.48	-6068.06	6229.50	6252.02	283.93	0.0	
14400.00	90.00	270.09	6883.00	279.00	1505.64	-6168.06	6328.28	6349.17	283.72	0.0	
14500.00	90.00	270.09	6883.00	279.00	1505.80	-6268.06	6427.06	6446.39	283.51	0.0	
14600.00	90.00	270.09	6883.00	279.00	1505.96	-6368.06	6525.83	6543.71	283.31	0.0	
14700.00	90.00	270.09	6883.00	279.00	1506.13	-6468.06	6624.61	6641.10	283.11	0.0	
14800.00	90.00	270.09	6883.00	279.00	1506.29	-6568.06	6723.38	6738.57	282.92	0.0	
14900.00	90.00	270.09	6883.00	279.00	1506.45	-6668.06	6822.16	6836.11	282.73	0.0	
15000.00	90.00	270.09	6883.00	279.00	1506.62	-6768.06	6920.93	6933.72	282.55	0.0	
15100.00	90.00	270.09	6883.00	279.00	1506.78	-6868.06	7019.71	7031.40	282.37	0.0	
15200.00	90.00	270.09	6883.00	279.00	1506.94	-6968.06	7118.48	7129.14	282.20	0.0	
15300.00	90.00	270.09	6883.00	279.00	1507.10	-7068.06	7217.26	7226.95	282.04	0.0	
15400.00	90.00	270.09	6883.00	279.00	1507.27	-7168.06	7316.03	7324.81	281.87	0.0	
15500.00	90.00	270.09	6883.00	279.00	1507.43	-7268.06	7414.81	7422.74	281.72	0.0	
15600.00	90.00	270.09	6883.00	279.00	1507.59	-7368.06	7513.58	7520.71	281.56	0.0	
15700.00	90.00	270.09	6883.00	279.00	1507.75	-7468.06	7612.36	7618.74	281.41	0.0	
15800.00	90.00	270.09	6883.00	279.00	1507.92	-7568.06	7711.14	7716.82	281.27	0.0	
15900.00	90.00	270.09	6883.00	279.00	1508.08	-7668.06	7809.91	7814.95	281.13	0.0	
16000.00	90.00	270.09	6883.00	279.00	1508.24	-7768.06	7908.69	7913.12	280.99	0.0	
16100.00	90.00	270.09	6883.00	279.00	1508.40	-7868.06	8007.46	8011.34	280.85	0.0	
16200.00	90.00	270.09	6883.00	279.00	1508.57	-7968.06	8106.24	8109.61	280.72	0.0	
16300.00	90.00	270.09	6883.00	279.00	1508.73	-8068.06	8205.01	8207.91	280.59	0.0	
16400.00	90.00	270.09	6883.00	279.00	1508.89	-8168.06	8303.79	8306.26	280.47	0.0	
16500.00	90.00	270.09	6883.00	279.00	1509.06	-8268.06	8402.56	8404.64	280.34	0.0	
16600.00	90.00	270.09	6883.00	279.00	1509.22	-8368.06	8501.34	8503.06	280.22	0.0	
16700.00	90.00	270.09	6883.00	279.00	1509.38	-8468.06	8600.11	8601.52	280.11	0.0	
16800.00	90.00	270.09	6883.00	279.00	1509.54	-8568.06	8698.89	8700.02	279.99	0.0	
16900.00	90.00	270.09	6883.00	279.00	1509.71	-8668.06	8797.66	8798.55	279.88	0.0	
17000.00	90.00	270.09	6883.00	279.00	1509.87	-8768.06	8896.44	8897.11	279.77	0.0	
17100.00	90.00	270.09	6883.00	279.00	1510.03	-8868.06	8995.22	8995.70	279.66	0.0	
17200.00	90.00	270.09	6883.00	279.00	1510.19	-8968.06	9093.99	9094.32	279.56	0.0	
17300.00	90.00	270.09	6883.00	279.00	1510.36	-9068.06	9192.77	9192.98	279.46	0.0	
17400.00	90.00	270.09	6883.00	279.00	1510.52	-9168.06	9291.54	9291.66	279.36	0.0	
17500.00	90.00	270.09	6883.00	279.00	1510.68	-9268.05	9390.32	9390.37	279.26	0.0	
17548.06	90.00	270.09	6883.00	279.00	1510.76	-9316.11	9437.79	9437.82	279.21	0.0	23-1 LTP V2 T1
17548.07	90.00	270.09	6883.00	279.00	1510.76	-9316.12	9437.80	9437.82	279.21	3.0	23-1 LTP V2 T1
17600.00	90.00	270.09	6883.00	279.00	1510.84	-9368.05	9489.09	9489.10	279.16	0.0	
17696.00	90.00	270.09	6883.00	279.00	1511.00	-9464.05	9583.92	9583.92	279.07	0.0	5 1/2in Casing
17698.06	90.00	270.09	6883.00	279.00	1511.00	-9466.12	9585.95	9585.95	279.07	0.0	23-1 BHL V2 T1

Targets										
Target Name -hit/miss target -Shape	Dip Angle (°)	Dip Dir. (°)	TVD (ft)	+N/-S (ft)	+E/-W (ft)	Northing (ft)	Easting (ft)	Latitude	Longitude	
23-1 BHL V2 T1 - proposal hits the target center - Point			6883.00	1511.00	-9466.12	1159654.64 N	2354421.60 E	37.08412528° N	107.71321940° W	

Coleman Oil and Gas Proposal Report



Database:	San Juan Basin	Local Coordinate Reference:	Outpost 33-8-23 1 V3
Company:		TVD Reference:	WELL @ 6604.00ft (Well Elev.)
Project:	Outpost	MD Reference:	WELL @ 6604.00ft (Well Elev.)
Site:	Brown Pad V2	North reference:	True North
Well:	Outpost 33-8-23 1 V3	Survey Calculation Method:	Minimum Curvature
Wellbore:			
Proposal:	Plan 2		

Targets									
Target Name	Dip Angle (°)	Dip Dir. (°)	TVD (ft)	+N/-S (ft)	+E/-W (ft)	Northing (ft)	Easting (ft)	Latitude	Longitude
23-1 FTP V2 T1 - hit/miss target - Shape			6883.00	1494.56	645.69	1159402.15 N	2364530.27 E	37.08408460° N	107.67855660° W
- proposal hits the target center									
- Point									
23-1 kop	0.00	358.66	6300.00	1400.00	1215.00	1159294.33 N	2365097.22 E	37.08382486° N	107.67660505° W
- proposal hits the target center									
- Circle									
23-1 LTP V2 T1			6883.00	1510.76	-9316.11	1159650.89 N	2354571.56 E	37.08412475° N	107.71270520° W
- proposal hits the target center									
- Point									

Formations						
Measured Depth (ft)	Vertical Depth (ft)	Subsea Depth (ft)	Name	Dip Angle (°)	Dip Direction (°)	
0.00	0.00	-6604.00	San Jose	0.00	0.00	
1506.93	1470.00	-5134.00	Ojo Alamo	0.00	0.00	
1778.74	1718.00	-4886.00	Kirtland	0.00	0.00	
2929.54	2768.00	-3836.00	Fruitland	0.00	0.00	
2989.82	2823.00	-3781.00	Fruitland Coal	0.00	0.00	
3210.11	3024.00	-3580.00	Pictured Cliffs	0.00	0.00	
3498.36	3287.00	-3317.00	Lewis	0.00	0.00	
4885.89	4553.00	-2051.00	Chacra	0.00	0.00	
5281.01	4918.00	-1686.00	Cliffhouse	0.00	0.00	
5745.32	5373.00	-1231.00	Menefee	0.00	0.00	
5905.41	5533.00	-1071.00	Point Lookout	0.00	0.00	
6295.41	5923.00	-681.00	Base Point Lookout	0.00	0.00	
6347.41	5975.00	-629.00	Mancos	0.00	0.00	
7224.53	6773.00	169.00	Middle Mancos	0.00	0.00	

Casing Points					
Measured Depth (ft)	Vertical Depth (ft)	Name	Casing Diameter (in)	Hole Diameter (in)	
500.00	500.00	13 3/8in Casing	13 3/8	17 1/2	
6623.00	6250.59	9 5/8in Casing	9 5/8	12 1/4	
17696.00	6883.00	5 1/2in Casing	5 1/2	8 1/2	

Checked By:	Approved By:	Date:
-------------	--------------	-------

Disclaimer Notice

Coleman Oil and Gas makes no warranty of any kind with respect to the subject matter included herein or the completeness or accuracy of this document.

Coleman Oil and Gas are not responsible for any actions (or lack thereof) taken as a result of relying on or in any way using information contained in this document and in no event shall be liable for any damages resulting from reliance on or use of this information.