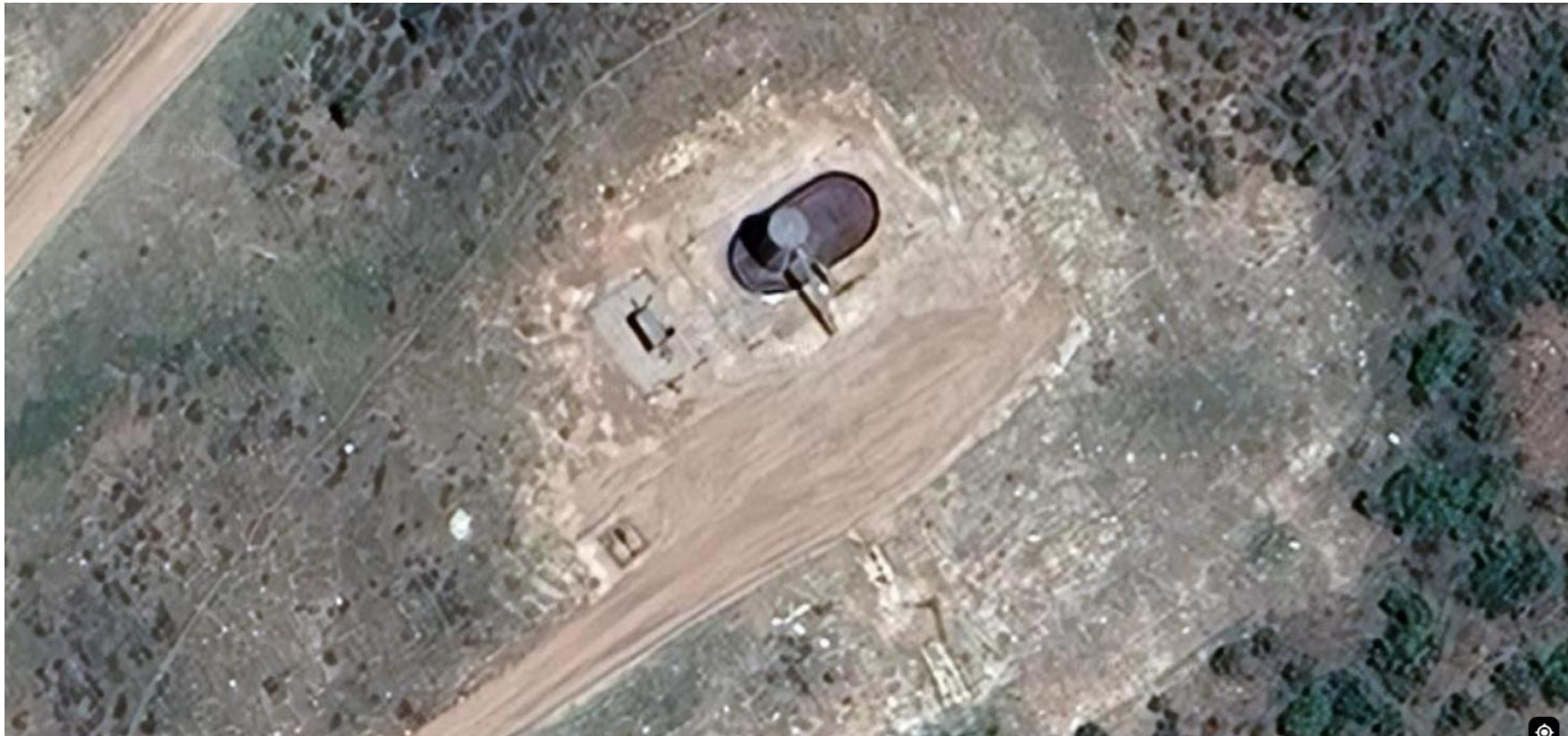


**Storm Water Management and Erosion control**  
**Location Name: QB ENERGY OPERATING LLC PUCKET 261-36 Pad**  
**Location #: 324206**



**Location Overview: Location is within High  
Priority/Density/Black Bear Habitat areas.**

**Section/Township/Range: 36 6S97W**

**Storm water Management and Erosion control**  
**Location Name: QB ENERGY OPERATING LLC PUCKET 261-36 Pad**  
**Location #: 324206**

91° E  
Garfield County



**North West corner of location.**

182° S  
Garfield County



**North East corner of location.**

Garfield County



**South West corner of location.**

Garfield County



**South East corner of location.**