

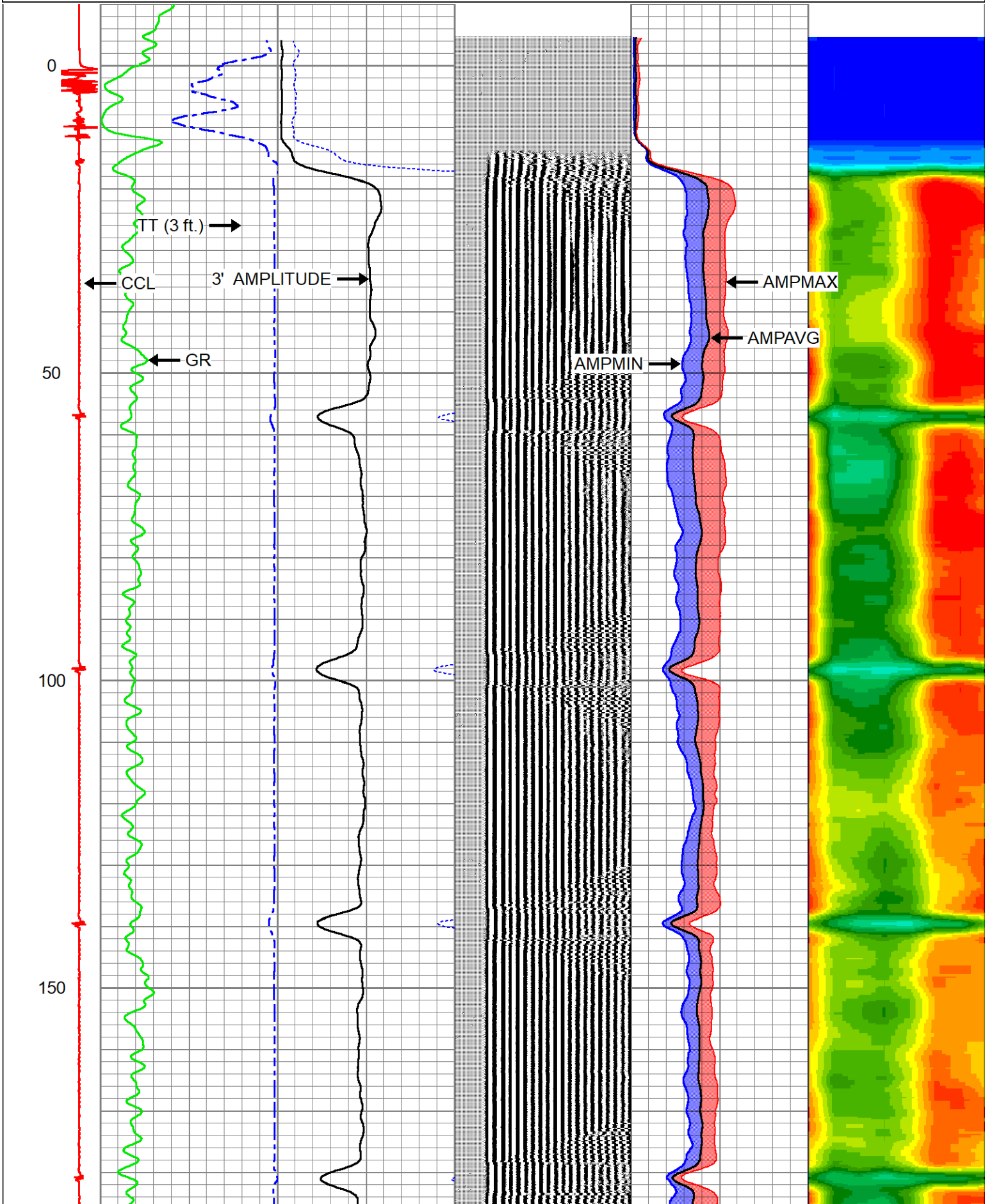


			Centralizers-Sondex PRC 2.75" Roller Centralizers Tekco 2 3/4" Adjustable Centralizer	3.00	2.75	25.00
CCL	0.00					
TCF	0.00					
GRHV	0.94					
GR	0.94					
			DSS_HSR_ELE-DSS_HSR_20_ELE (HSR20 0000) DSS 2 3/4" HSR Bond tool - Electronics Module	4.81	2.75	61.00
ROTV	4.10					
THV	4.10					
INTEMP	4.10					
PNEG	4.10					
PPOS	4.10					
WVFS8	6.09					
WVFS7	6.09					
WVFS6	6.09					
WVFS5	6.09					
WVFS4	6.09					
WVFS3	6.09		DSS_HSR_SND-DSS_HSR_20_SND (HSR20 0000) DSS 2 3/4" HSR Bond tool - Sonde Module	7.70	2.75	86.00
WVFS1	6.09					
WVFCAL	6.59					
WVF3FT	6.59					
WVF5FT	7.59					
TEMP	11.67					
WVFSYNC	11.80					
			Centralizers-Sondex PRC 2.75" Roller Centralizers Tekco 2 3/4" Adjustable Centralizer	3.00	2.75	25.00

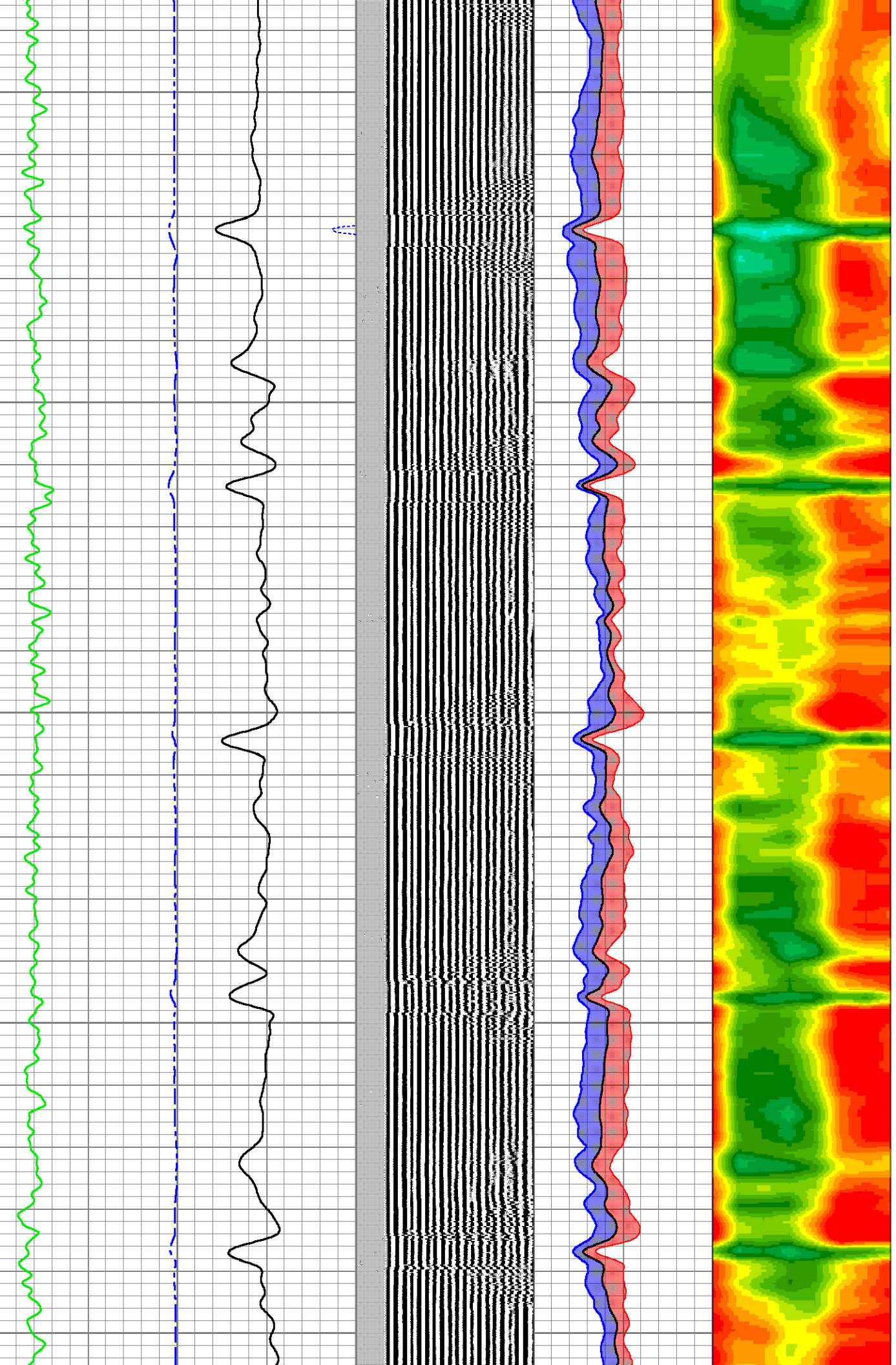
Dataset: cvx-r&r farms 29i-321.db: WATTENBERG-90750/R&R\_FARMS\_29I-321/DSSHRSR20-003/RBL.2  
 Total length: 19.52 ft  
 Total weight: 200.31 lb  
 O.D.: 2.75 in

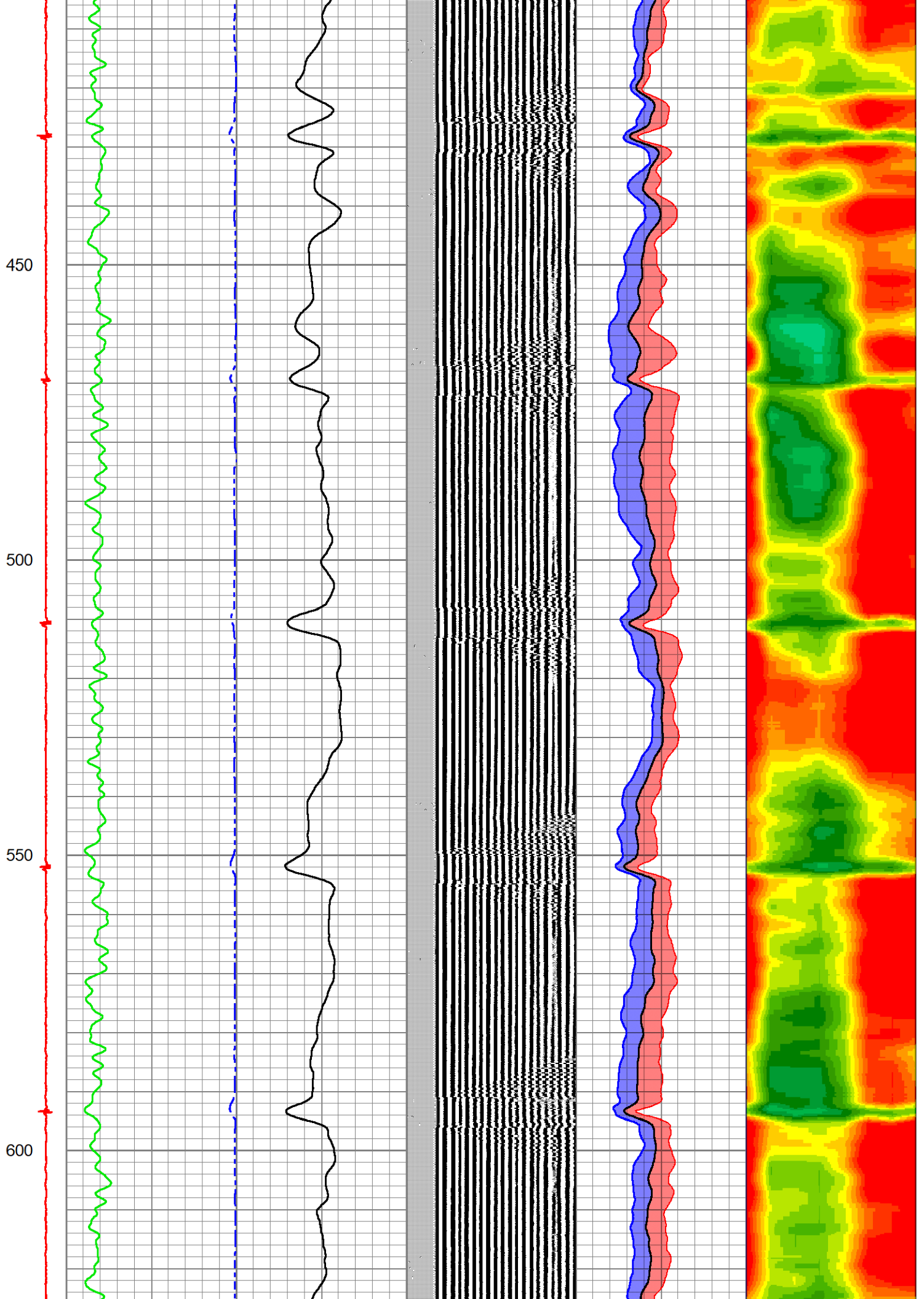
Database File cvx-r&r farms 29i-321.db  
 Dataset Pathname WATTENBERG-90750/R&R\_FARMS\_29I-321/DSSHRSR20-003/RBL.2  
 Presentation Format ranger\_dss\_radial  
 Dataset Creation Wed Oct 08 11:14:05 2025  
 Charted by Depth in Foot scaled 1:240

CCL	TT (3 ft.)		3' AMPLITUDE		VDL (5 ft.)		0	AMPMIN	100	1	RADIAL MAP	7
-200020000	420	(usec) 250	0	(mV) 100	200	(usec) 1200	0	AMPAVG	100	4		50
	0	GR (GAPI) 150	3' Amplitude x5				0	AMPMAX	100			
			0	(mV) 25								



200  
250  
300  
350  
400



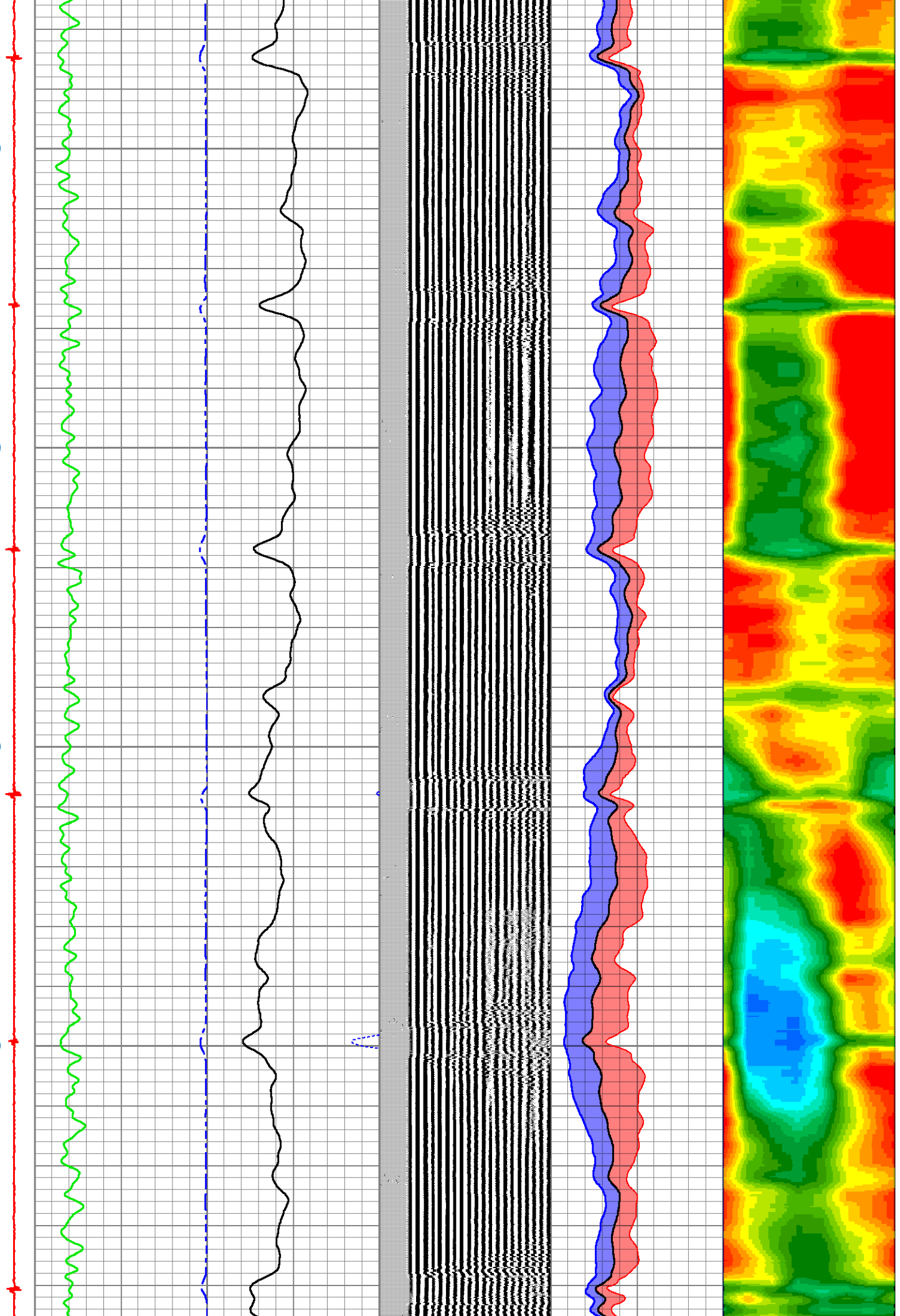


650

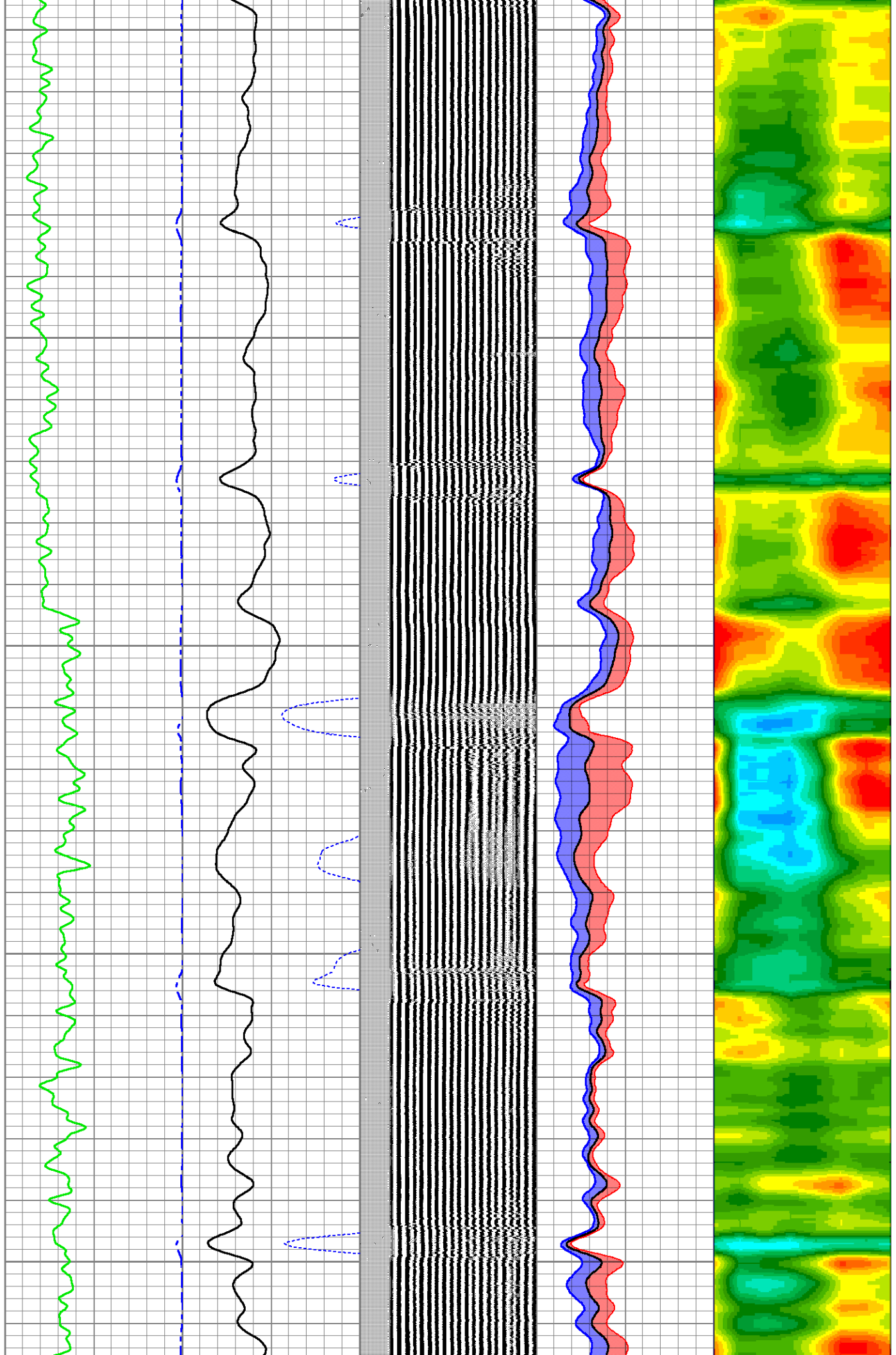
700

750

800



850  
900  
950  
1000  
1050

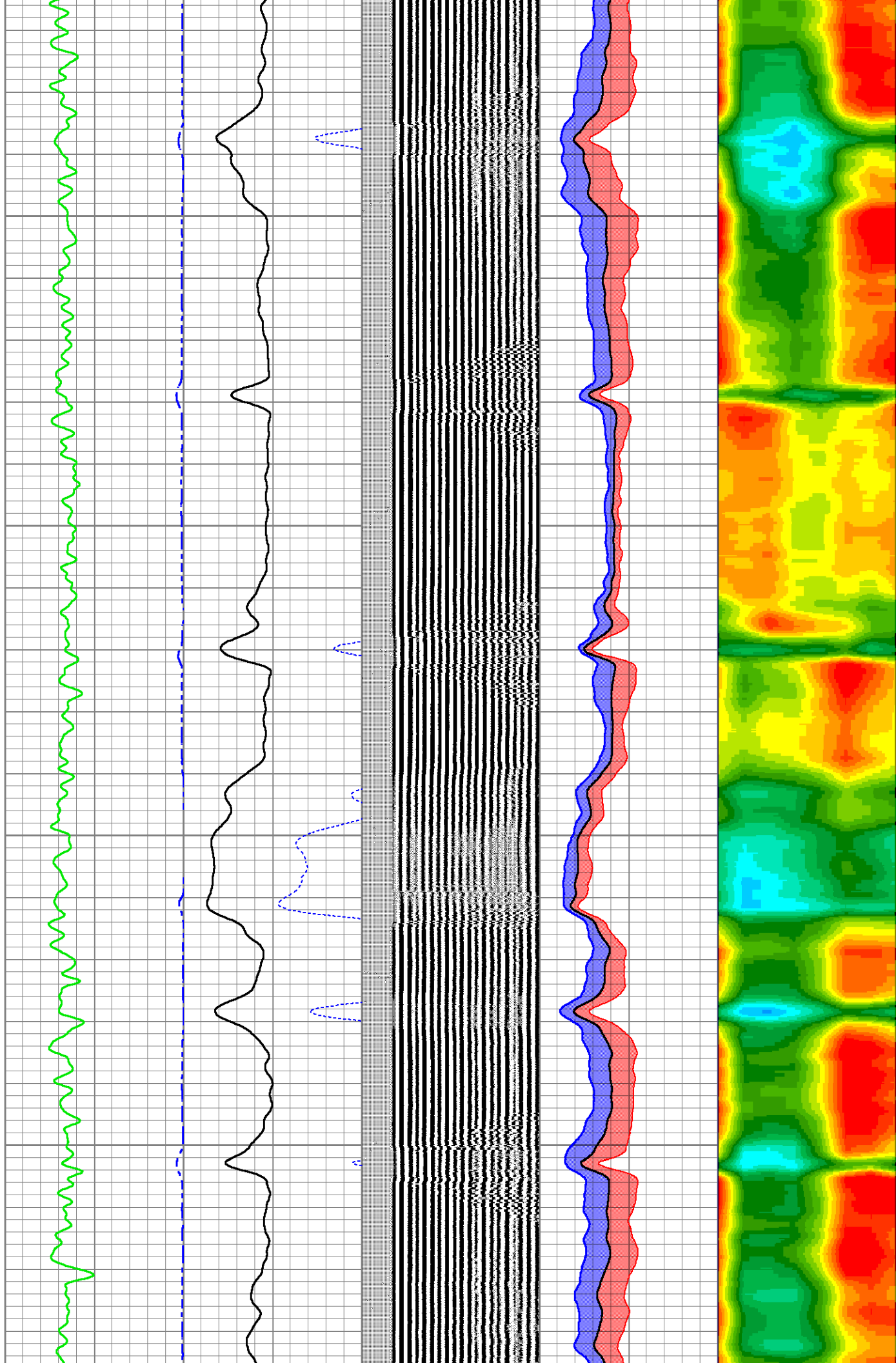


1100

1150

1200

1250



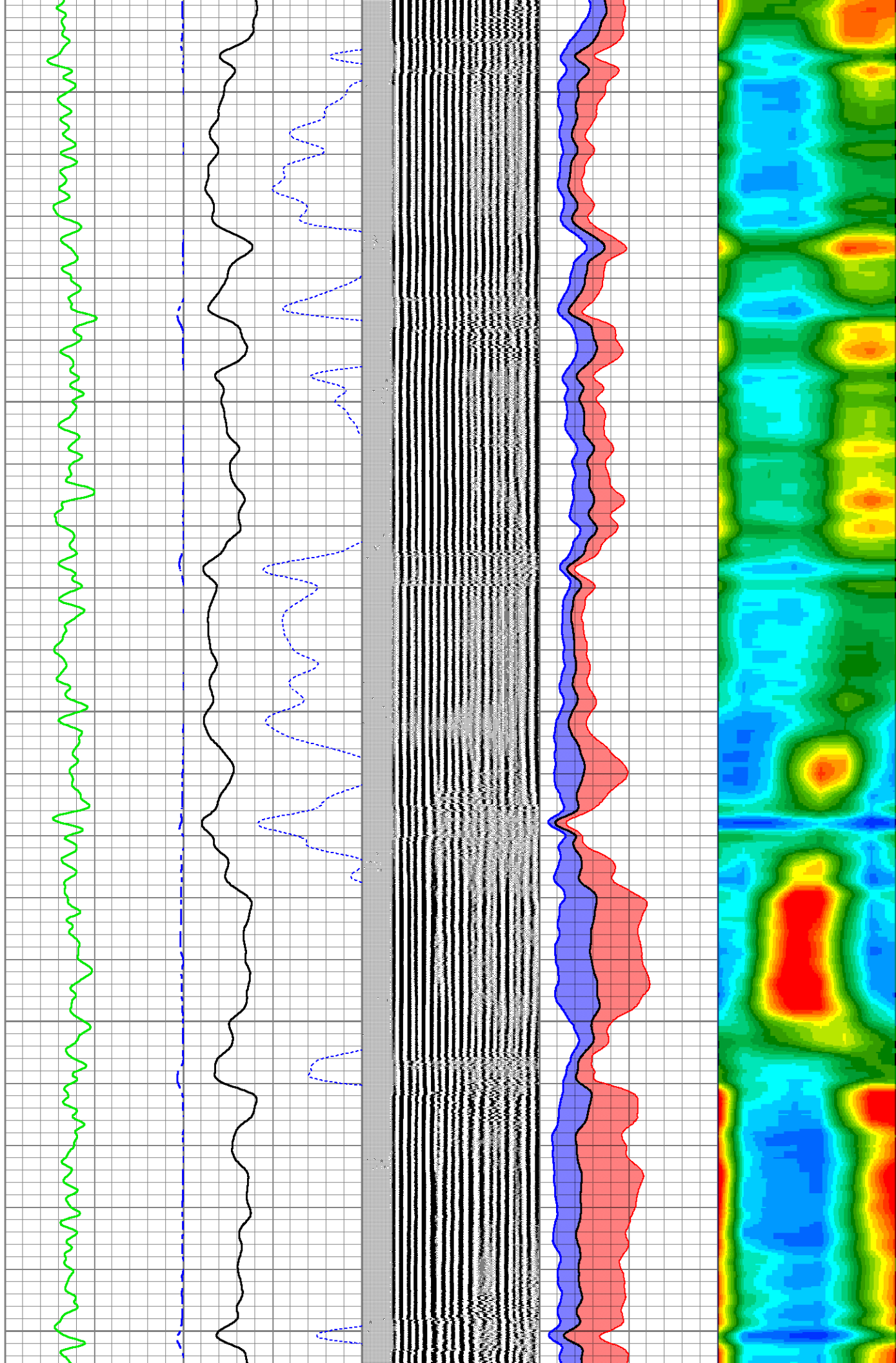
1300

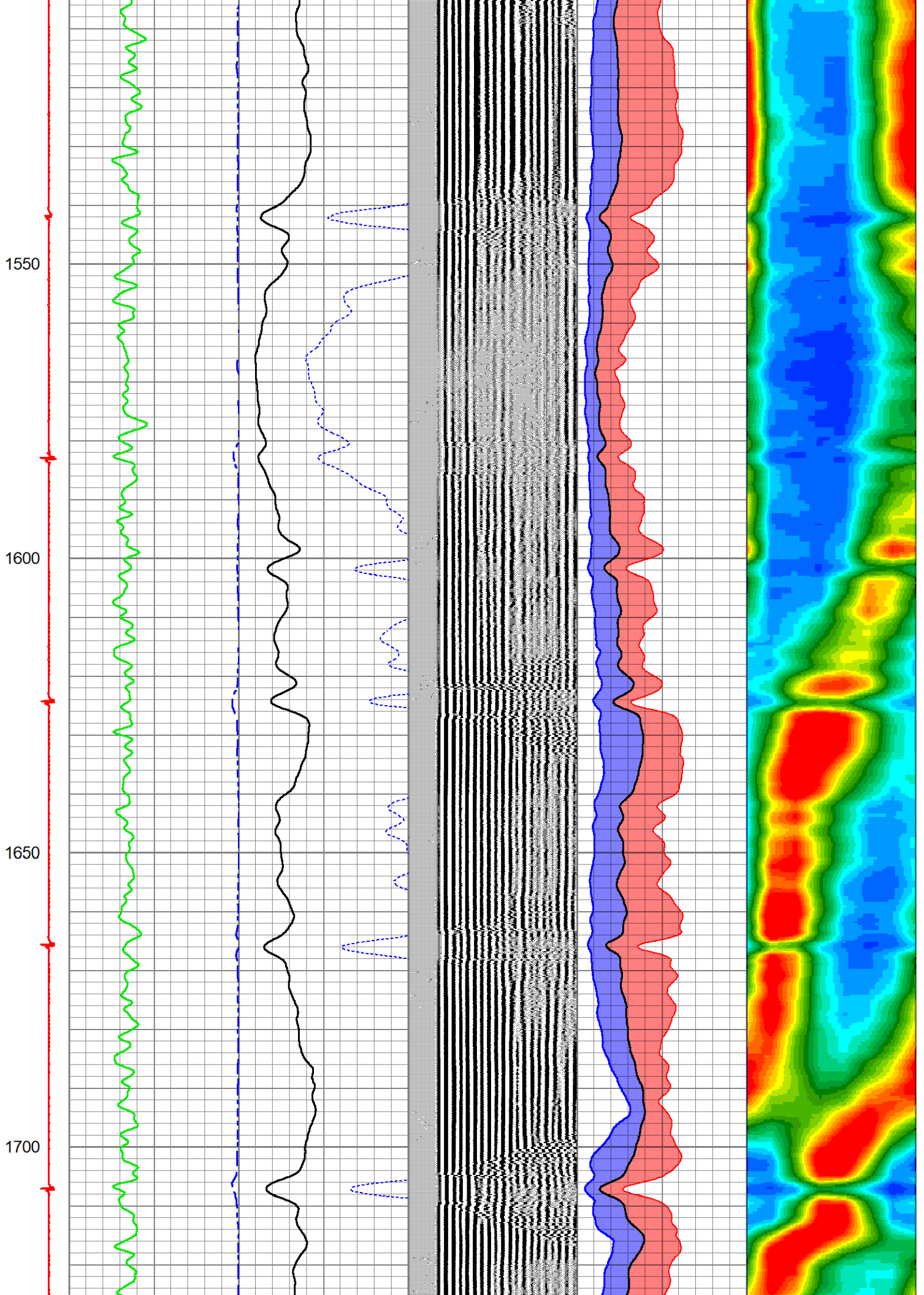
1350

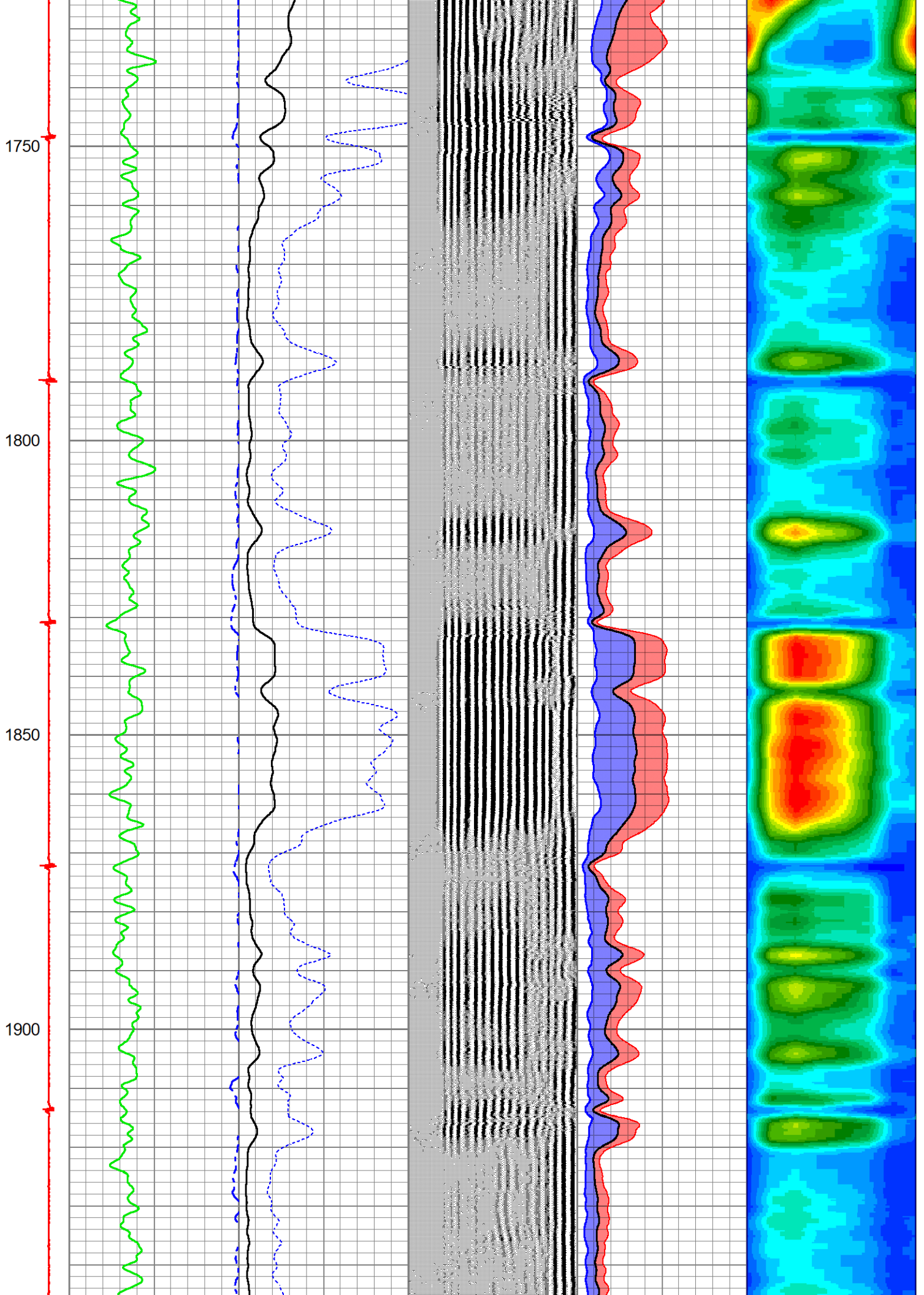
1400

1450

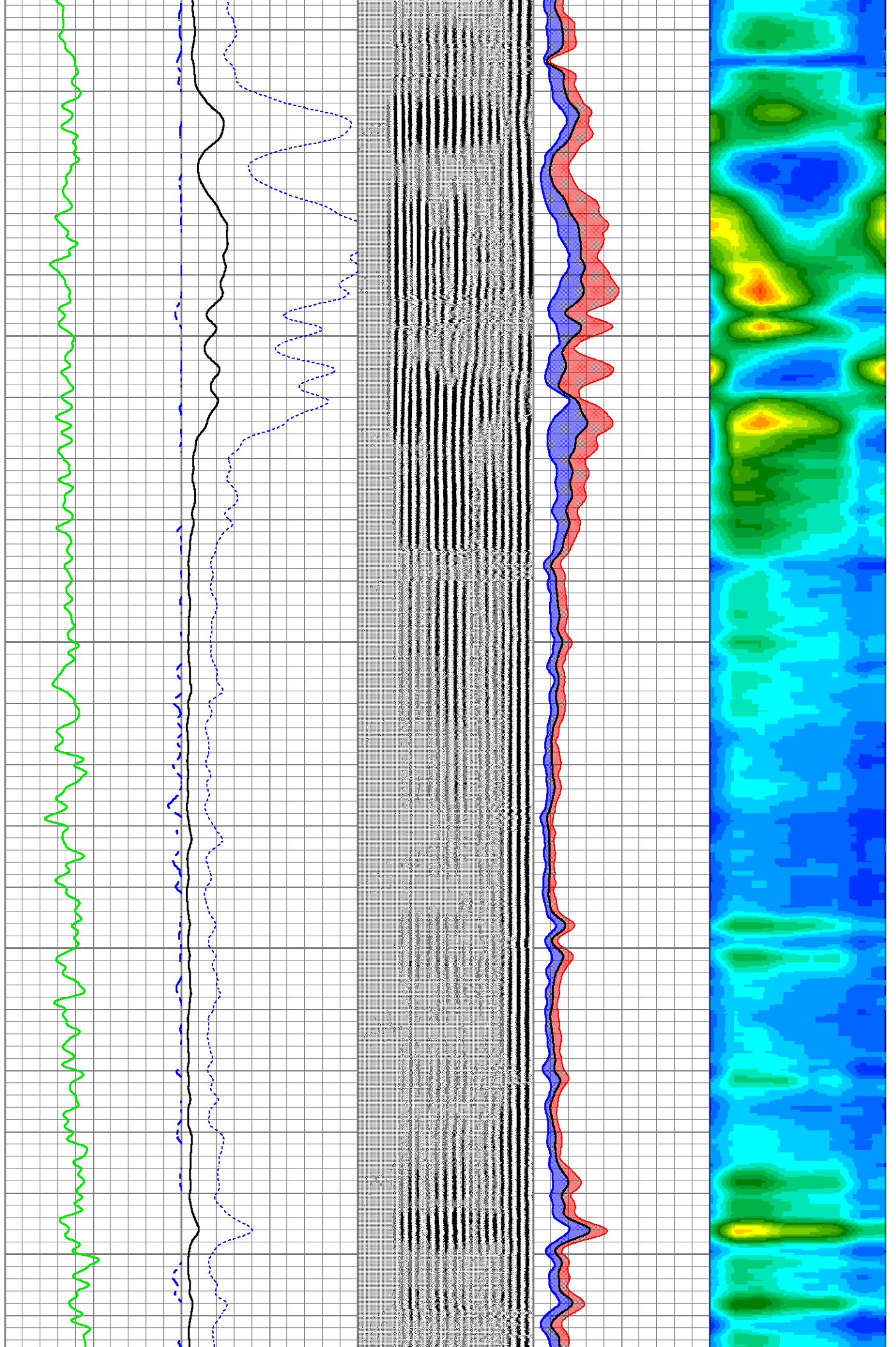
1500







1950  
2000  
2050  
2100  
2150

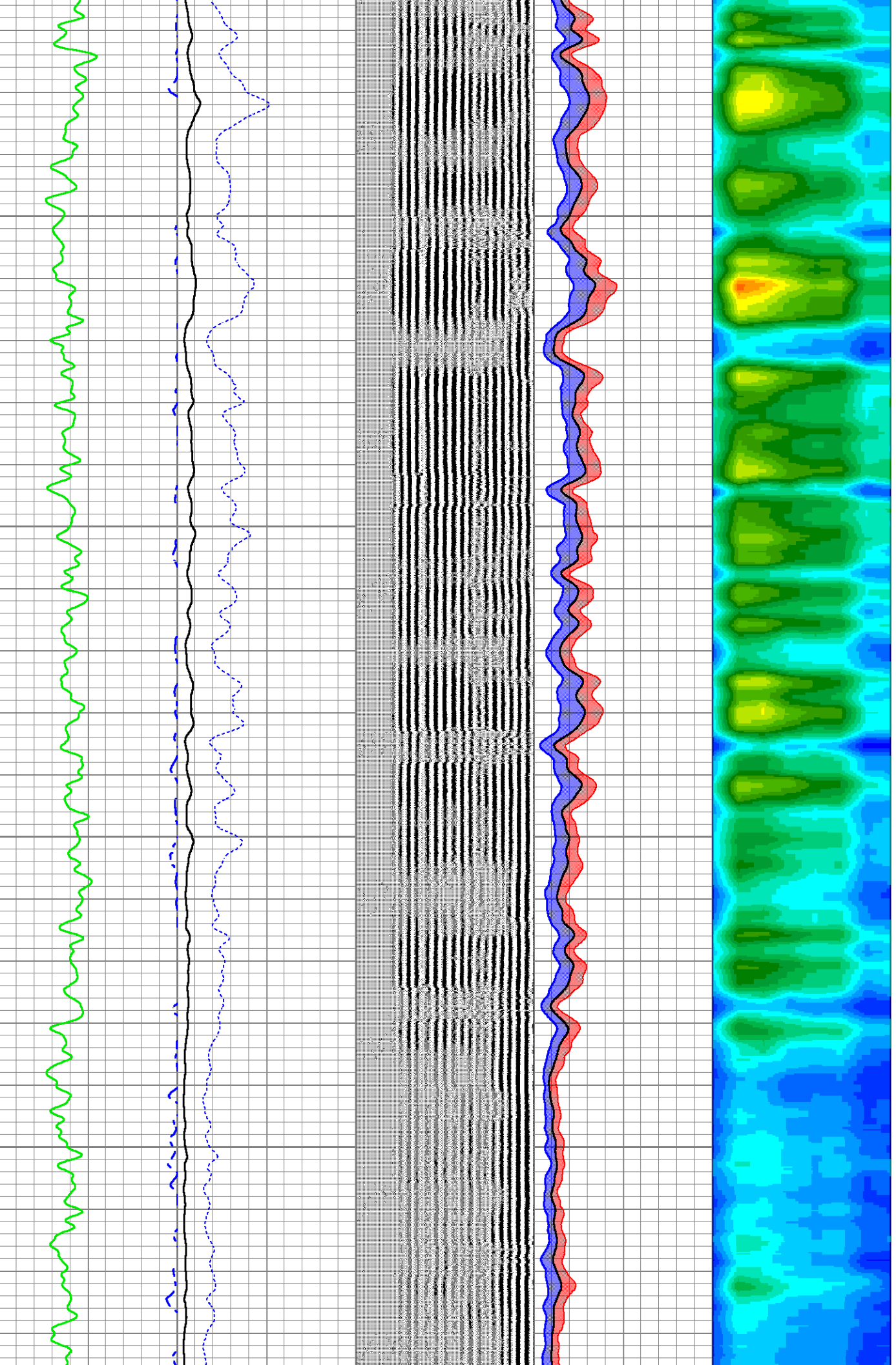


2200

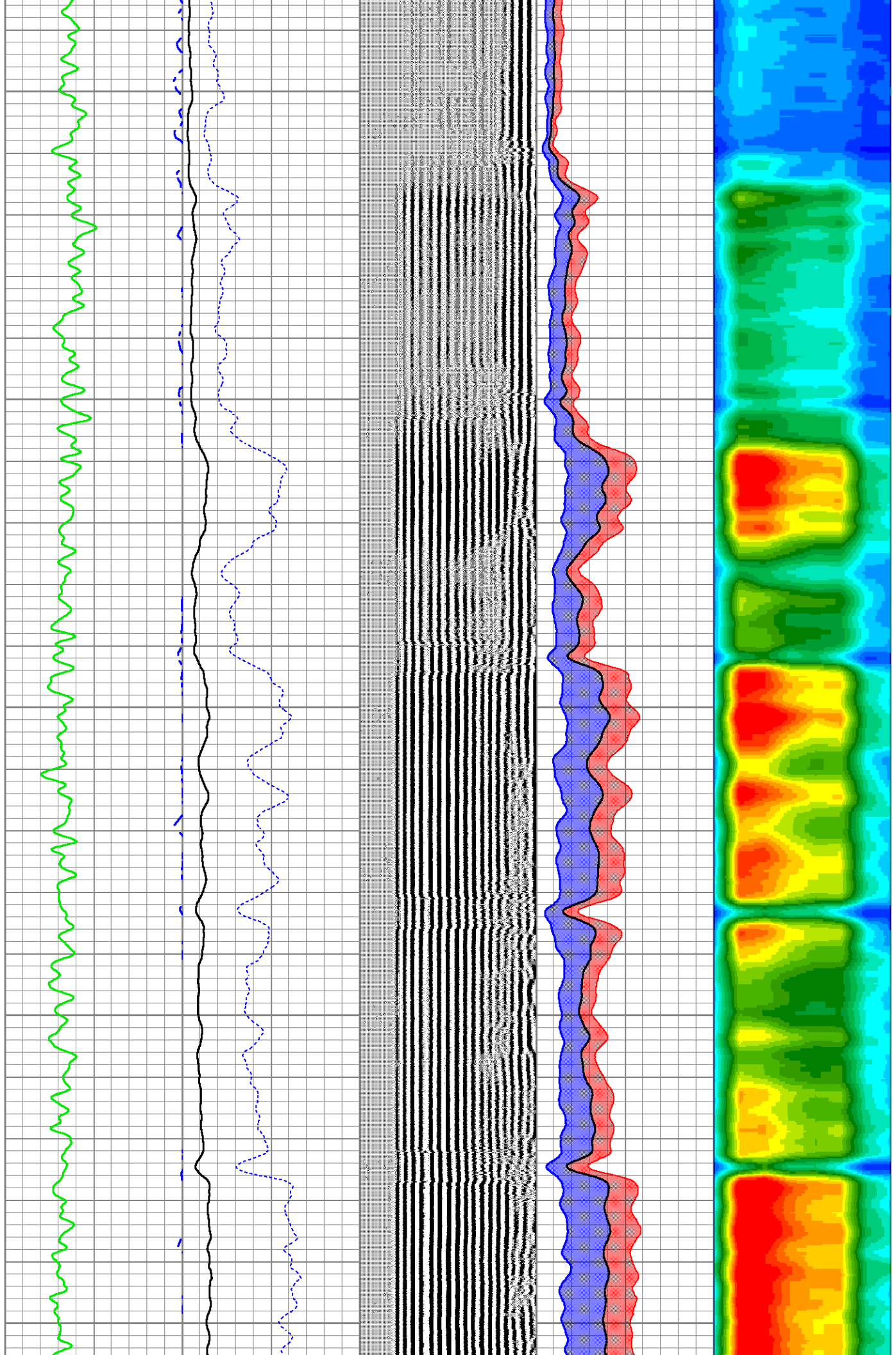
2250

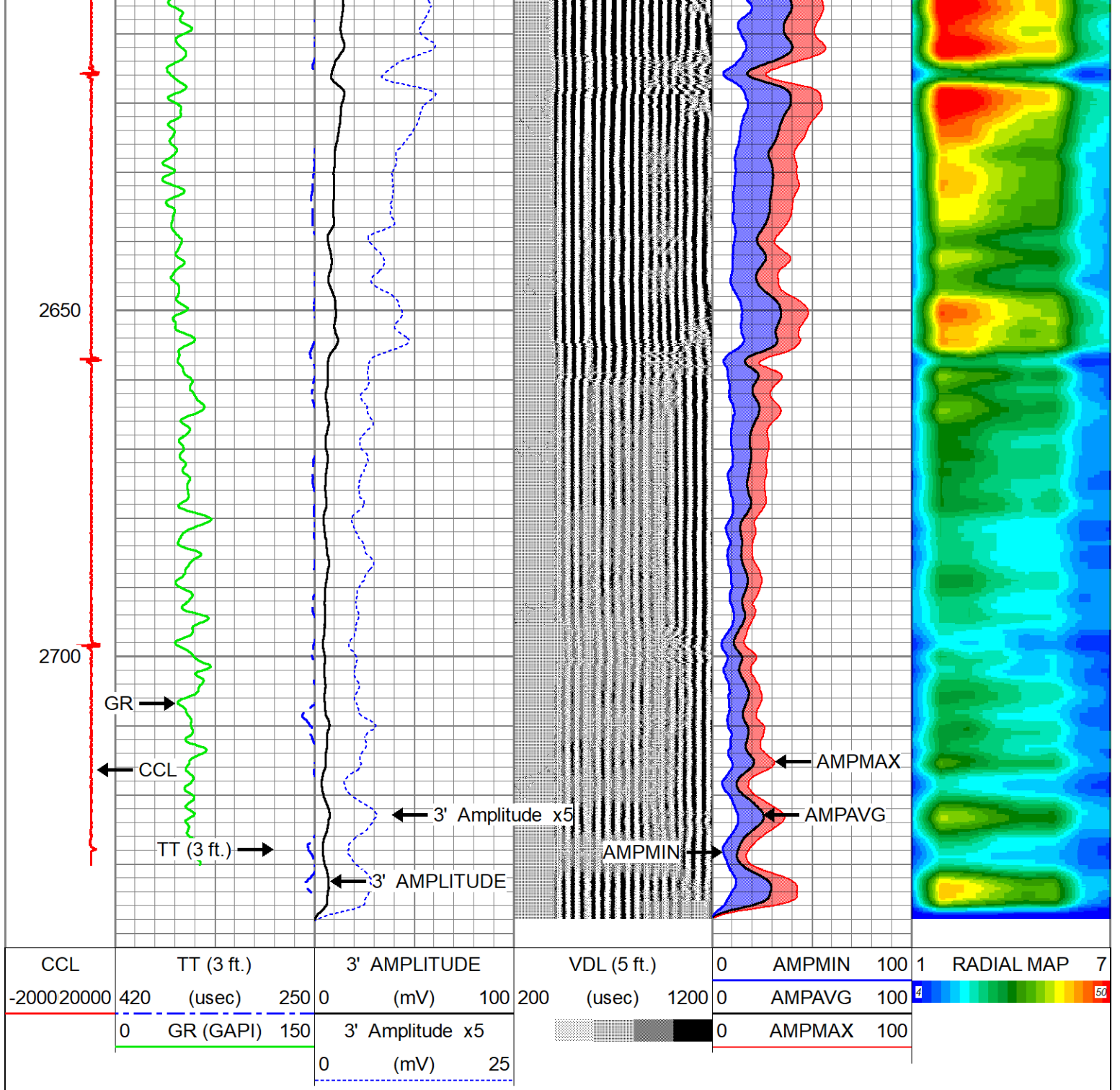
2300

2350



2400  
2450  
2500  
2550  
2600





**Company** CHEVRON  
**Well** R & R FARMS 29i-321  
**Field** WATTENBERG - 90750  
**County** WELD  
**State** COLORADO

**Country** U.S.A.