

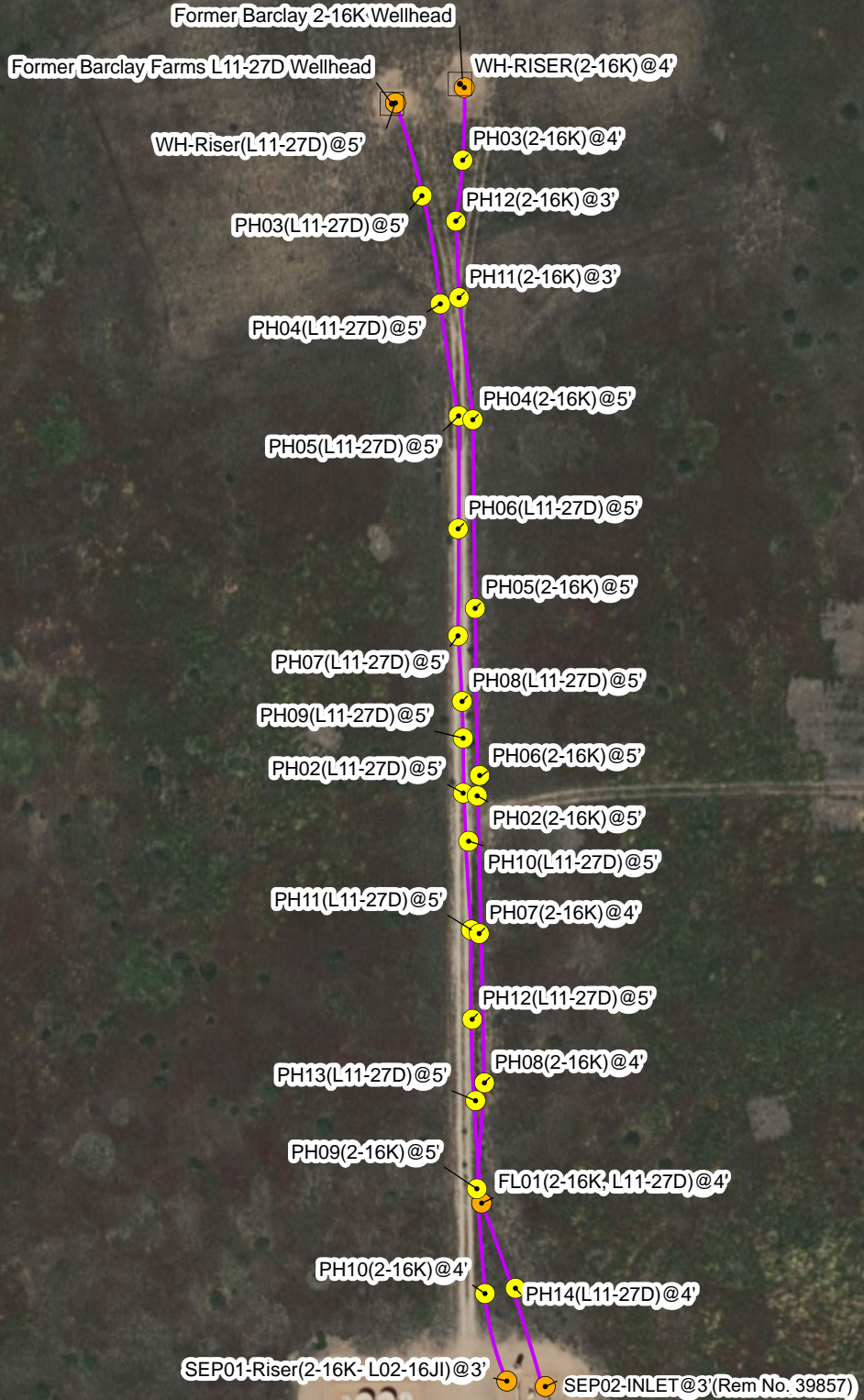
Legend

- P&A'd Wellhead
- Soil Sample
- Soil Screening
- Approximate Location of Flowline (Removed)

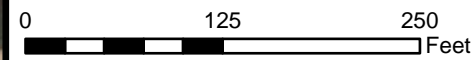
Notes
Verification sample results have been omitted from the figure.



Rangeland



Default Folder: C:\Users\Margan Tai\OneDrive - ENSOLUM, LLC\Ensolium GIS\0 - Projects\Kerr-McGee Oil & Gas Onshore, LP\09A14171053 - Barclay 2-16K Wellhead



Flowline Excavation Site Map

Barclay 2-16K & Barclay Farms L11-27D Flowlines
Kerr-McGee Oil & Gas Onshore, LP
SESE SEC 2-T3N-R66W
Weld County, CO

Project Number: 09A14171053

FIGURE

2