





**CEMENT TREATMENT REPORT**

<b>Customer:</b> MURFIN DRILLING CO	<b>Well:</b> RED POLL 10-21	<b>Ticket:</b> WP 6534
<b>City, State:</b> LIMON, CO	<b>County:</b> LINCOLN, CO	<b>Date:</b> 8/6/2025
<b>Field Rep:</b> MURFIN REP STATE REP	<b>S-T-R:</b> SEC.21-10S-56W	<b>Service:</b> PTA

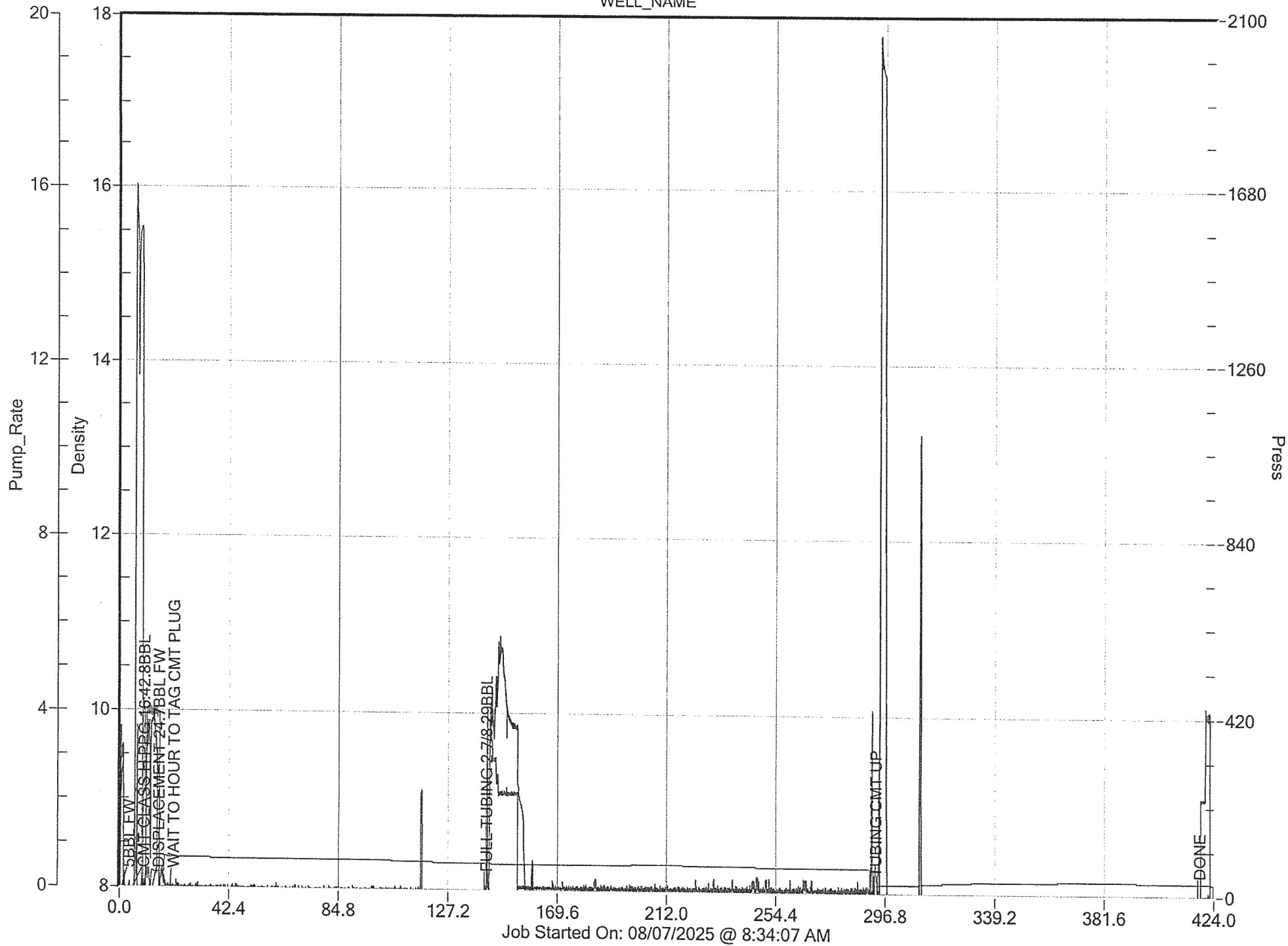
Downhole Information		Calculated Slurry - Lead		Calculated Slurry - Tail	
Hole Size:	7 7/8 in	Blend:	CLASS H	Blend:	
Hole Depth:	8495 ft	Weight:	16.4 ppg	Weight:	ppg
Casing Size:	5 1/2 in	Water / Sx:	4.4 gal / sx	Water / Sx:	gal / sx
Casing Depth:	5255 ft	Yield:	1.06 ft <sup>3</sup> / sx	Yield:	ft <sup>3</sup> / sx
Tubing / Liner:	2 7/8 in	Annular Bbls / Ft.:	0.0167 bbs / ft.	Annular Bbls / Ft.:	bbs / ft.
Depth:	5255 ft	Depth:	5255 ft	Depth:	ft
Tool / Packer:	YES	Annular Volume:	87.8 bbls	Annular Volume:	0 bbls
Tool Depth:	7463 ft	Excess:		Excess:	
Displacement:	bbls	Total Slurry:	87.8 bbls	Total Slurry:	0.0 bbls
		Total Sacks:	485 sx	Total Sacks:	0 sx

TIME	RATE	PSI	STAGE BBLs	TOTAL BBLs	REMARKS
8:45 AM			-	-	ARRIVE LOCATION
8:47 AM				-	RIG UP
9:30 AM	4.5	120.0	5.0	5.0	5BBL FW SPACER
9:33 AM	5.0	250.0	2.8	7.8	CMT CLASS H ( 15 SKS) WITH 2% 5255FT
9:53 AM	4.0	200.0	24.7	32.5	DISPLACEMENT 24.7
10:05 AM				32.5	DONE WAIT 1 HOUR TAG CMT
11:45 AM	2.5	10.0	1.0	33.5	1BBL FW WAIT 1 HOUR TO TAG CEMENT
12:25 PM	4.0	500.0	29.0	62.5	REVERSE OUT BACKSIDE 29BBL FW NO RETURNS @5030FT
3:00 PM	2.5	2,000.0	1.0	63.5	PUMP .2 BBL PSI 2000 @ 5255FT
3:15 PM	2.5	1,000.0	0.2	63.7	PUMP .2 BBL PSI 1000@ 5255FT
4:30 AM				63.7	RIG PULL TUBING OUT HOLD
6:45 PM					SAFETY MEETING
7:15 PM					DEPART LOCATION
					12 TUBING JOINTS CEMENT UP

CREW		UNIT	SUMMARY		
Cementor:	ROGER GASTON	945	Average Rate	Average Pressure	Total Fluid
Pump Operator:	JOHN P	208	3.6 bpm	583 psi	64 bbls
Bulk #1:	JOSH M	194-530			
Bulk #2:					

# MURFIN DRILLING CO

WELL\_NAME



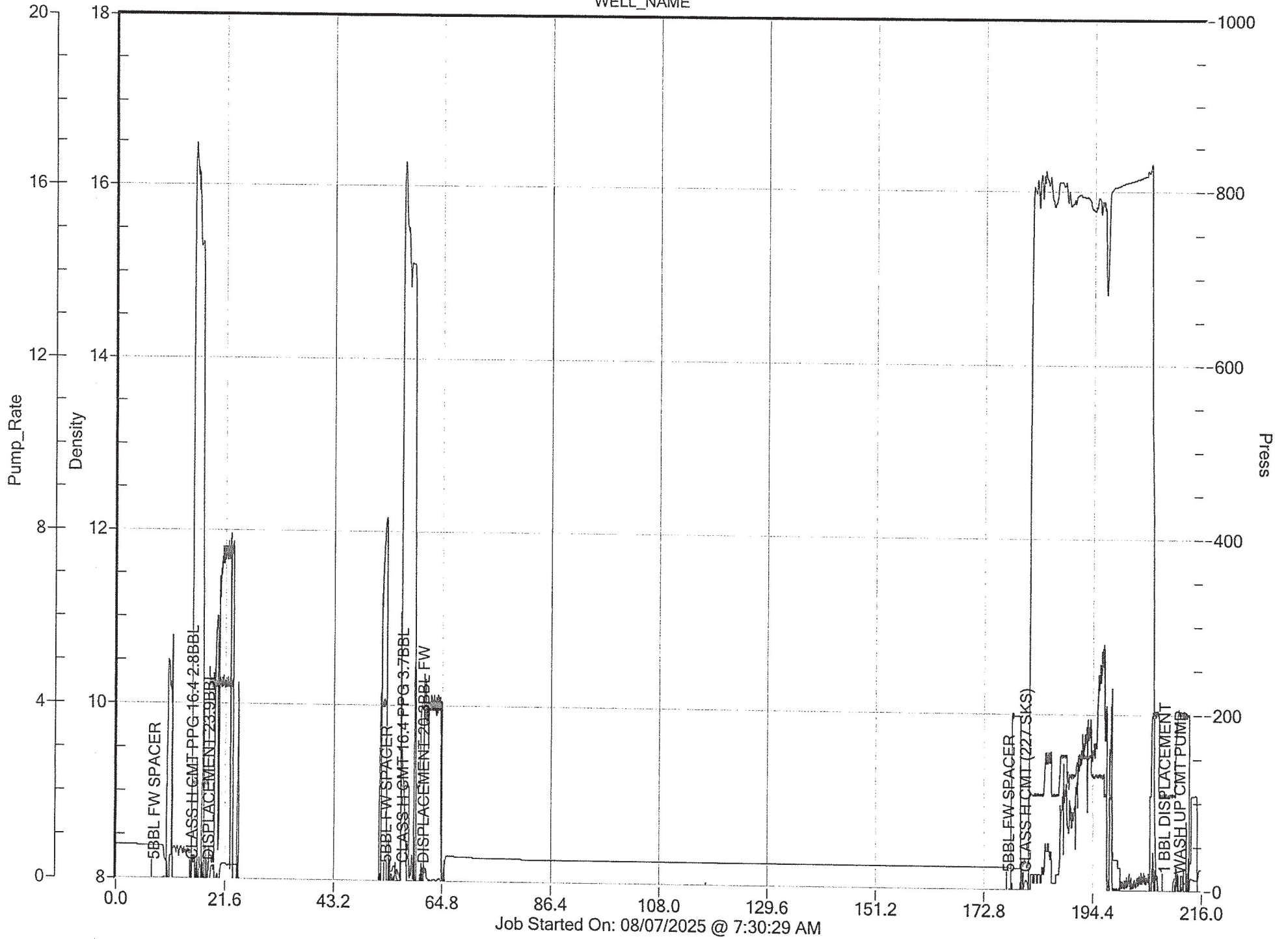
Job Started On: 08/07/2025 @ 8:34:07 AM





# MURFIN DRILLING CO

WELL\_NAME







Murfin Drilling Co  
Red Poll #10-21

