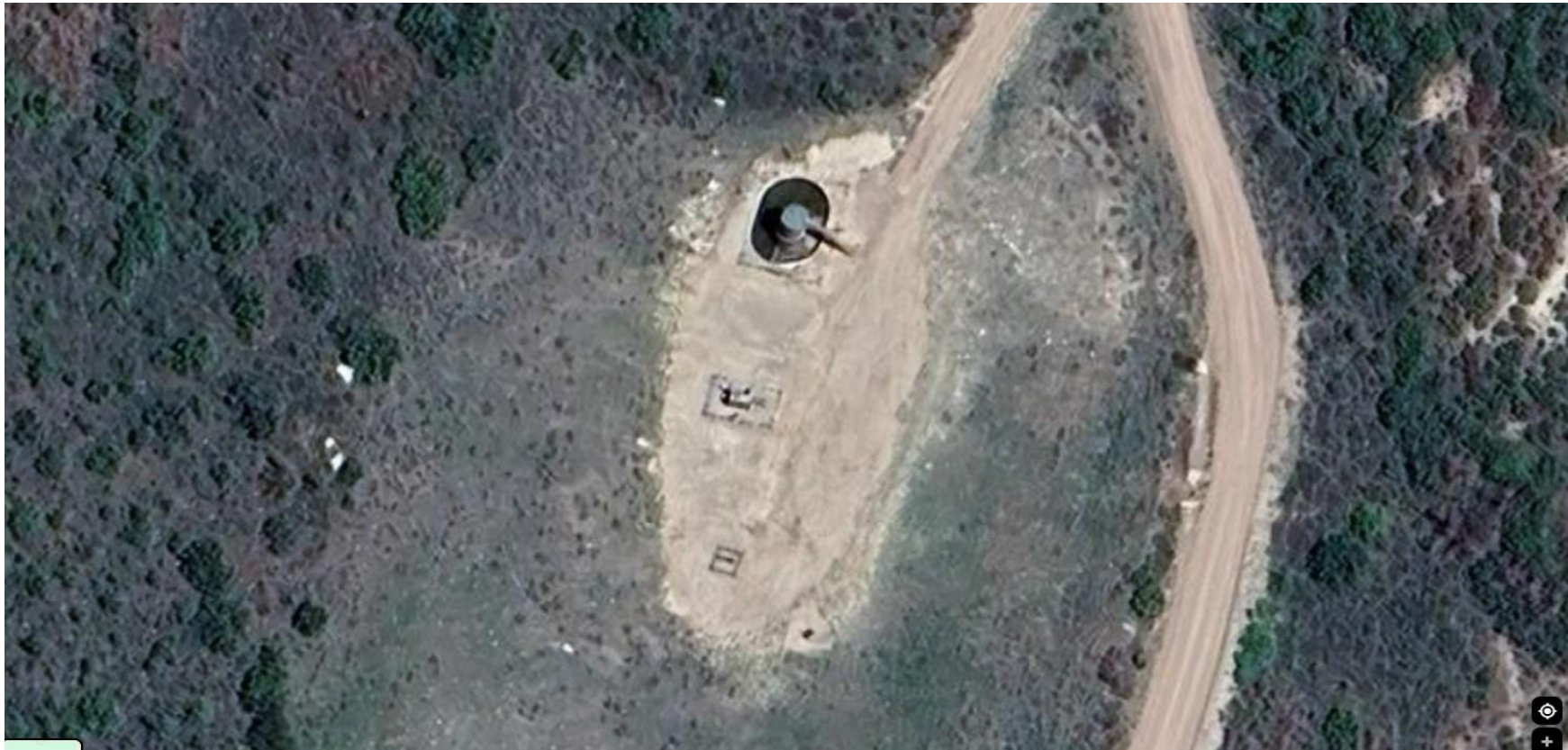


**Storm Water Management and Erosion control**  
**Location Name: QB ENERGY OPERATING LLC PUCKETT 262-1 Pad**  
**Location #: 324325**



**Location Overview: Location is within High  
Priority/Density/Black Bear Habitat areas.**

**Section/Township/Range: 1 7S97W**

**Storm water Management and Erosion control**  
**Location Name: QB ENERGY OPERATING LLC PUCKETT 262-1 Pad**  
**Location #: 324325**

149° SE  
Garfield County



**North West corner of location.**

234° SW  
Garfield County



**North East corner of location.**

Garfield County



**South West corner of location.**

Garfield County



**South East corner of location.**