



TEP ROCKY MOUNTAIN LLC INTERMEDIATE POST JOB REPORT

**FEDERAL #RG 322-13-298 05-103-12602
S:13 T:2S R:98W Rio Blanco CO**

CallSheet #: 94646
Proposal #: 81447



INTERMEDIATE Post Job Report

Attention: Mr. Dustin Childers | (936) 524-8828 | dchilders@terraep.com
Terra Energy Partners, LLC
4828 Loop Central Dr., Suite 900 | Houston, TX 77081

Dear Mr. Dustin Childers,

Thank you for the opportunity to provide cementing services on this well. American Cementing strives to achieve complete customer satisfaction. If you have any questions regarding the services or data provided, please contact American Cementing at any time.

Sincerely,

Addison Kneale

Field Engineer I | (904) 228-9560 | addison.kneale@americacementing.com

Field Office 28730 US-6, Rifle, CO 81650
Phone: (970) 657-1187

Job Details & Summary

Geometry

Type	Function	OD (in)	ID (in)	Weight (lb/ft)	Thread	Top (ft)	Bottom (ft)	Excess (%)
Casing	Outer	13.375	12.615	54.5	n/a	0	1372	0
Open Hole	Outer	n/a	12.25	n/a	n/a	1372	3108	75
Casing	Inner	9.625	8.921	36	n/a	0	3108	0

Equipment / People

Unit Type	Unit	Power Unit	Employee #1
Cement Trailer Float	CTF-249	TRC-112	Danny Ridgeway
Cement Pump Float	CPF-058	TRH-959	Joel Carrasco
Light Duty Vehicles	LDV-145		Collin Woronovitch

Timing

Event	Date/Time
ERTS	02/10/2025 18:00
Call Out	2/10/2025 10:30
Depart Facility	2/10/2025 13:40
On Location	2/10/2025 15:30
Rig Up Iron	2/10/2025 16:00
Job Started	2/10/2025 20:15
Job Completed	2/10/2025 22:20
Rig Down Iron	2/10/2025 22:40
Depart Location	2/10/2025 23:30

General Job Information

Metrics	Value
Well Fluid Density	8.9 lb/gal
Well Fluid Type	WBM
Rig Circulation Vol	300 bbls
Rig Circulation Time	0.75 hours
Calculated Displacement	237 bbls
Actual Displacement	237 bbls
Total Spacer to Surface	0 bbls
Total CMT to Surface	0 bbls
Well Topped Out	N/A

Job Details

Metrics	Value
Well Full Prior to Job	Yes
Well Fluid Density Into Well	8.9 lb/gal
Well Fluid Density Out of Well	8.9 lb/gal

Job Details (cont.)

Metrics	Value
BHCT	87 °F
BHST	117 °F

Water Analysis

Metrics	Value	Recommended
Water Source	Upright Rig Tank	
Temperature	74 °F	50-80 °F
pH Level	7	5.5-8.5
Chlorides	60 mg/L	0-3000 mg/L
Total Alkalinity	60	0-1000
Total Hardness	80 mg/L	0-500 mg/L
Carbonates	N/A mg/L	0-100 mg/L
Sulfates	<200 mg/L	0-1500 mg/L
Potassium	100 mg/L	0-3000 mg/L
Iron	0 mg/L	0-300 mg/L

Circulation

Lost Circulation Experienced	Losses into Spacer	Losses into Cement	Losses into Displacement
No			



Job Execution Information

Fluid	Product	Function	Density (lb/gal)	Yield (ft ³ /sk)	Water Rq. (gal/sk)	Water Rq. (gal/bbl)	Volume (sks)	Volume (bbl)	Designed Top (ft)
1	Water	Flush	8.34			42.00		20.00	1858
2	Lead	Lead	12.80	2.03	11.16		171.00	61.95	2063
3	Tail	Tail	13.50	1.76	9.10		128.00	40.08	2694
4	Water	DisplacementFinal	8.34			42.00		237.00	0

Job Fluid Details

Fluid	Type	Fluid	Product	Function	Conc.	Uom
2	Lead	Lead	ASTM TYPE IL	Cement	100.00	%
2	Lead	Lead	A-10	Accelerator	5.00	%BWOB
2	Lead	Lead	A-2	Accelerator	2.00	lb/sk
2	Lead	Lead	A-7P	Accelerator	2.00	lb/sk
2	Lead	Lead	IntegraSeal POLI	LostCirculation	0.25	lb/sk
2	Lead	Lead	STATIC FREE	Other	0.01	lb/sk
2	Lead	Lead	XCem-311	Defoamer	0.30	%BWOB
3	Tail	Tail	ASTM TYPE IL	Cement	100.00	%
3	Tail	Tail	A-10	Accelerator	5.00	%BWOB
3	Tail	Tail	A-2	Accelerator	2.00	lb/sk
3	Tail	Tail	A-7P	Accelerator	2.00	lb/sk
3	Tail	Tail	IntegraSeal POLI	LostCirculation	0.25	lb/sk
3	Tail	Tail	STATIC FREE	Other	0.01	lb/sk
3	Tail	Tail	XCem-311	Defoamer	0.30	%BWOB

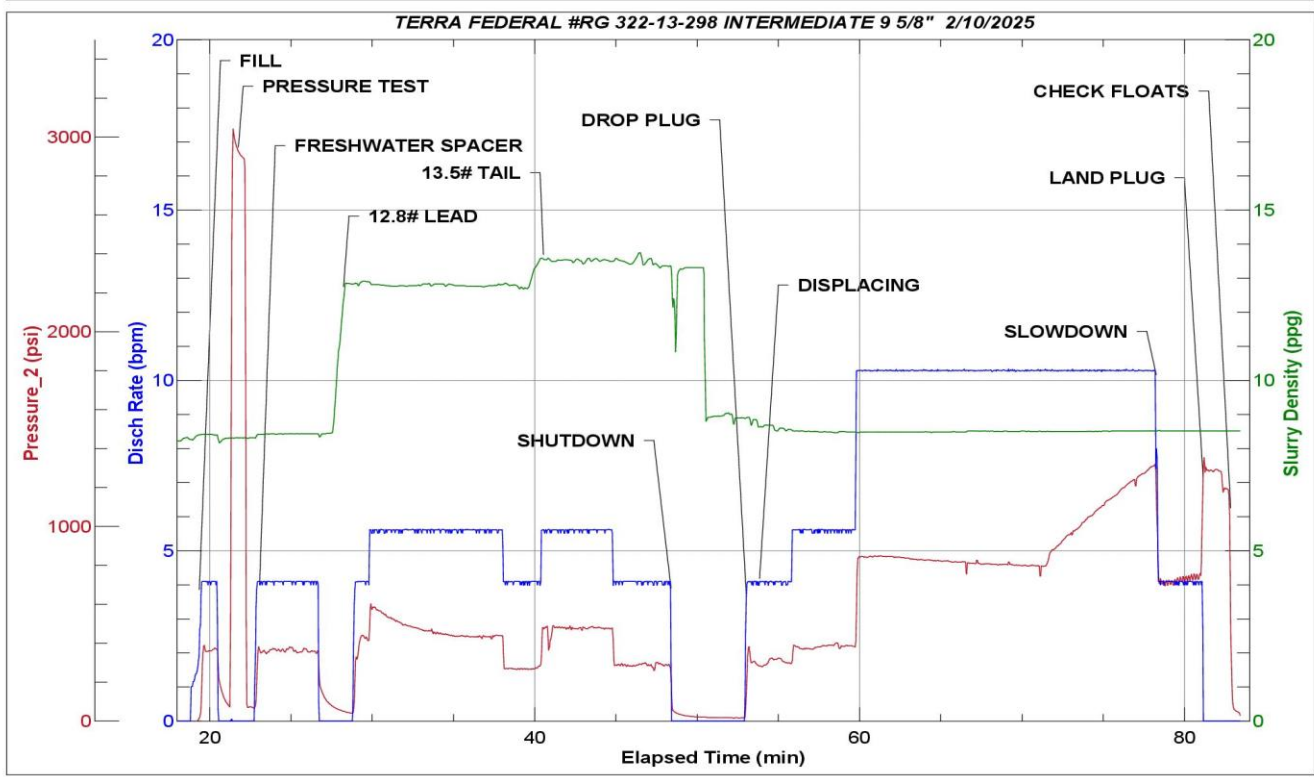
Job Logs

Line	Event	Date (MM/DD/YY)	Time (HH:MM)	Density (lb/gal)	Pump Rate (bpm)	Pump Volume (bbls)	Pipe Pressure (psi)	Comment
1	Callout	2/10/2025	10:30					CREW CALLED OUT FOR LOCATION TIME OF 18:00 2/10/25
2	Depart Location	2/10/2025	13:40					CREW DEPARTS RCO YARD STAGING FOR RIG LOCATION
3	Arrive On Location	2/10/2025	15:30					CREW AND EQUIPMENT ARRIVED ON LOCATION. RIG IS RUNNING CASING
4	Rig Up Iron	2/10/2025	16:00					PRE RIG UP MEETING / RIG UP IRON HOSES AND EQUIPMENT ON STANDBY @ 18:00 WAITING FOR CASING TO BE RAN. CASING LANDED @ 19:45 RIG CIRCULATED .75 HOUR 300 BBLs
5	Safety Meeting	2/10/2025	20:15					PRE JOB SAFTEY MEETING WITH RIG CREW AND COMPANY MAN. FINISH RIGGING UP HEAD AND FLOOR AFTER SAFETY MEETING.
6	Fill Lines	2/10/2025	21:12	8.34	4	5	388	FILL LINES WITH 5 BBLs OF FRESH WATER
7	Pressure Test Lines	2/10/2025	21:14	8.34	1	1	3000	PRESSURE TEST PUMP AND LINES TO 3000 PSI
8	Other	2/10/2025	21:16	8.34	4	15	366	PUMP 15 BBLs FRESHWATER SPACER.
9	Pump Lead Cement	2/10/2025	21:23	12.8	4	0	434	BEGIN PUMPING (12.8 PPG, 2.03Y, 11.2MW LEAD CEMENT, WEIGHT VERIFIED BY MUD SCALE
10	Pump Lead Cement	2/10/2025	21:27	12.8	5.6	20	474	20 BBLs CEMENT PUMPED
11	Pump Lead Cement	2/10/2025	21:30	12.8	5.6	20	438	40 BBLs CEMENT PUMPED
12	Pump Lead Cement	2/10/2025	21:34	12.8	4	22	264	62 BBLs (171 SKS) TOTAL LEAD CEMENT PUMPED. SWAP TO TAIL
13	Pump Tail Cement	2/10/2025	21:34	13.5	4	0	273	BEGIN PUMPING (13.5 PPG, 1.76Y, 9.1MW TAIL CEMENT, WEIGHT VERIFIED BY MUD SCALE
14	Pump Tail Cement	2/10/2025	21:38	13.5	5.6	20	284	20 BBLs TAIL PUMPED
15	Pump Tail Cement	2/10/2025	21:42	13.5	4	20	286	40 BBLs (128 SKS) TOTAL TAIL CEMENT PUMPED
16	Shutdown	2/10/2025	21:42					SHUTDOWN AND PREPARE TO WASH UP ON TOP
17	Drop Top Plug	2/10/2025	21:47	8.34	4	0	306	DROP PLUG, WITNESSED BY COMPANY MAN. BEGIN PUMPING FRESHWATER DISPLACEMENT
18	Pump Displacement	2/10/2025	21:56	8.34	10.3	50	819	50 BBLs DISPLACEMENT PUMPED
19	Pump Displacement	2/10/2025	22:00	8.34	10.3	50	846	100 BBLs DISPLACEMENT PUMPED
20	Pump Displacement	2/10/2025	22:05	8.34	10.3	50	745	150 BBLs DISPLACEMENT PUMPED
21	Pump Displacement	2/10/2025	22:10	8.34	10.3	50	1175	200 BBLs DISPLACEMENT PUMPED
22	Pump Displacement	2/10/2025	22:15	8.34	4	37	780	237 BBLs (CALCULATED DISPLACEMENT PUMPED. MAX LIFT BEFORE SLOW DOWN @225 BBLs. 1320 PSI @ 10.3 BPM
23	Land Plug	2/10/2025	22:15				1290	PLUG LANDED FCP- 780 PSI BUMP 1290 PSI
24	Check Floats	2/10/2025	22:17			1		BLEED OFF. FLOATS HELD 1 BBL BACK
25	End Job	2/10/2025	22:20					END CEMENTING SERVICE
26	Safety Meeting	2/10/2025	22:30					PRE RIG DOWN JSA
27	Rig Down Iron	2/10/2025	22:40					RIG DOWN EQUIPMENT, IRON AND HOSES
28	Depart Location	2/10/2025	23:30					CREW DEPARTS LOCATION FOR RCO YARD

Pump Diagrams



JobMaster Program Version 5.01C1
 Job Number: 94646
 Customer: TERRA
 Well Name: FEDERAL RG 322-13-298



Job Start: Monday, February 10, 2025