



TEP ROCKY MOUNTAIN LLC LONG STRING POST JOB REPORT

**FEDERAL #RG 322-13-298 05-103-12602
S:13 T:2S R:98W Rio Blanco CO**

CallSheet #: 94647
Proposal #: 81452



LONG STRING Post Job Report

Attention: Mr. Dustin Childers | (936) 524-8828 | dchilders@terraep.com
Terra Energy Partners, LLC
4828 Loop Central Dr., Suite 900 | Houston, TX 77081

Dear Mr. Dustin Childers,

Thank you for the opportunity to provide cementing services on this well. American Cementing strives to achieve complete customer satisfaction. If you have any questions regarding the services or data provided, please contact American Cementing at any time.

Sincerely,

Krystal Schell

Field Engineer I | (719) 992-1830 | krystal.schell@americacementing.com

Field Office 28730 US-6, Rifle, CO 81650
Phone: (970) 657-1187

Job Details & Summary

Geometry

Type	Function	OD (in)	ID (in)	Weight (lb/ft)	Thread	Top (ft)	Bottom (ft)	Excess (%)
Casing	Outer	9.625	8.921	36	n/a	0	3108	0
Open Hole	Outer	n/a	8.75	n/a	n/a	3069	7806	75
Open Hole	Outer	n/a	8.75	n/a	n/a	7806	11783	75
Casing	Inner	4.5	4	11.6	n/a	0	11783	0

Equipment / People

Unit Type	Unit	Power Unit	Employee #1
Cement Trailer Float	CTF-242	TRC-195	Stephen Lancaster
Cement Trailer Float	CTF-340	TRC-112	Danny Ridgeway
Cement Trailer Float	CTF-108	TRC-249	Steven Richey
Field Storage Silo	FSS-473		
Field Storage Silo	FSS-792		
Cement Pump Float	CPF-058	TRH-959	Jeremy Bradbrook
Light Duty Vehicles	LDV-166		Francisco Castillo

Timing

Event	Date/Time
ERTS	02/15/2025 00:00
Call Out	2/15/2025 22:00
Depart Facility	2/16/2025 02:00
On Location	2/16/2025 03:30
Rig Up Iron	2/16/2025 04:00
Job Started	2/16/2025 08:12
Job Completed	2/16/2025 11:19
Rig Down Iron	2/16/2025 11:30
Depart Location	2/16/2025 12:30

General Job Information

Metrics	Value
Well Fluid Density	9.6 lb/gal
Well Fluid Type	WBM
Rig Circulation Vol	660 bbls
Rig Circulation Time	1 hours
Calculated Displacement	182 bbls
Actual Displacement	182 bbls
Total Spacer to Surface	0 bbls
Total CMT to Surface	0 bbls
Well Topped Out	N/A

Job Details

Metrics	Value
Flare Prior to Job	No
Flare Prior to Job	0 units
Flare During Job	No
Flare During Job	0 units
Flare at End of Job	No
Flare at End of Job	0 units
Well Full Prior to Job	Yes
Well Fluid Density Into Well	9.6 lb/gal
Well Fluid Density Out of Well	9.6 lb/gal

Job Details (cont.)

Metrics	Value
BHCT	203 °F
BHST	268 °F

Water Analysis

Metrics	Value	Recommended
Water Source	Upright Rig Tank	
Temperature	75 °F	50-80 °F
pH Level	7	5.5-8.5
Chlorides	0 mg/L	0-3000 mg/L
Total Alkalinity	240	0-1000
Total Hardness	250 mg/L	0-500 mg/L
Carbonates	0 mg/L	0-100 mg/L
Sulfates	200 mg/L	0-1500 mg/L
Potassium	250 mg/L	0-3000 mg/L
Iron	0 mg/L	0-300 mg/L

Circulation

Lost Circulation Experienced
No

Job Execution Information

Fluid	Product	Function	Density (lb/gal)	Yield (ft ³ /sk)	Water Rq. (gal/sk)	Water Rq. (gal/bbl)	Volume (sks)	Volume (bbl)	Designed Top (ft)
1	Water	Flush	8.34			42.00		60.00	3502
2	IntegraGuard EZ II	Spacer	11.00			33.43		40.00	4129
3	Lead	Lead	12.70	2.09	11.24		838.00	312.06	4547
4	Tail	Tail	13.50	1.85	8.98		1161.00	381.82	7806
5	Displacement	DisplacementFinal	8.34			42.00		182.00	0

Job Fluid Details

Fluid	Type	Fluid	Product	Function	Conc.	Uom
2	Spacer	IntegraGuard EZ II	S-8	StrengthRetgression	169.68	lb/bbl
2	Spacer	IntegraGuard EZ II	ASA-301	Viscosifier	3.00	lb/bbl
2	Spacer	IntegraGuard EZ II	SAPP	Surfactant	10.00	lb/bbl
2	Spacer	IntegraGuard EZ II	XCem-311	Defoamer	0.50	lb/bbl
3	Lead	Lead	ASTM TYPE IL	Cement	100.00	%
3	Lead	Lead	BA-90	BondEnhancer	8.00	lb/sk
3	Lead	Lead	GW-86	Viscosifier	0.10	%BWOB
3	Lead	Lead	IntegraSeal PHENO	LostCirculation	3.00	lb/sk
3	Lead	Lead	IntegraSeal POLI	LostCirculation	0.25	lb/sk
3	Lead	Lead	R-3	Retarder	0.57	%BWOB
3	Lead	Lead	STATIC FREE	Other	0.01	lb/sk
3	Lead	Lead	XCem-311	Defoamer	0.30	%BWOB
3	Lead	Lead	XCem-532	FluidLoss	0.30	%BWOB
4	Tail	Tail	BA-90	BondEnhancer	10.00	%
4	Tail	Tail	CLASS G	Cement	70.00	%
4	Tail	Tail	FLY ASH (POZZOLAN)	Extender	20.00	%
4	Tail	Tail	BENTONITE	Viscosifier	6.00	%BWOB
4	Tail	Tail	FL-24	FluidLoss	0.40	%BWOB
4	Tail	Tail	GW-86	Viscosifier	0.10	%BWOB
4	Tail	Tail	IntegraSeal PHENO	LostCirculation	3.00	lb/sk
4	Tail	Tail	R-3	Retarder	0.25	%BWOB
4	Tail	Tail	S-8	StrengthRetgression	25.00	%BWOB
4	Tail	Tail	XCem-311	Defoamer	0.30	%BWOB

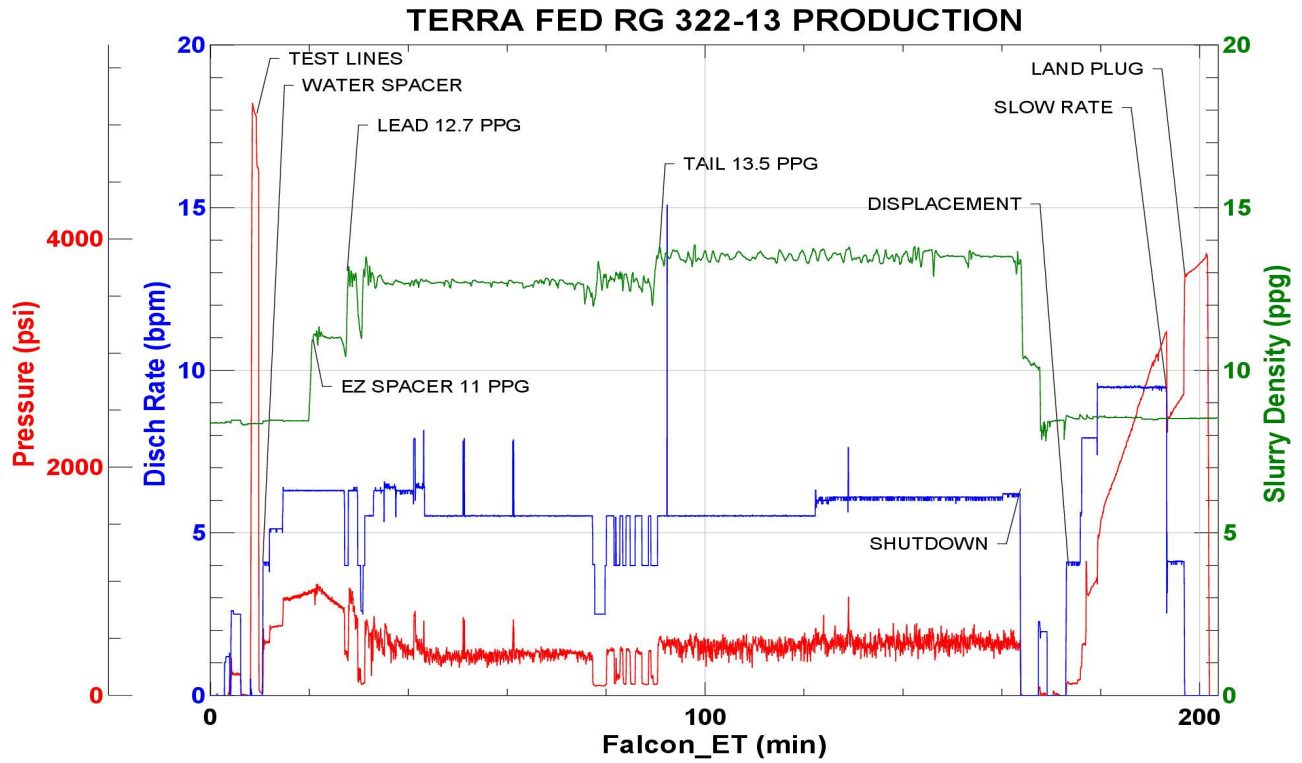
Job Logs

Line	Event	Date (MM/DD/YY)	Time (HH:MM)	Density (lb/gal)	Pump Rate (bpm)	Pump Volume (bbls)	Pipe Pressure (psi)	Comment
1	CALLOUT	2/15/2025	22:00					ON LOCATION AT 06:00 HRS
2	LEAVE THE YARD	2/16/2025	02:00					CREW LEAVE THE YARD
3	ON LOCATION	2/16/2025	03:30					CREW ON LOCATION
4	RIG UP	2/16/2025	04:00					RIG UP MEETING, RIG UP
5	SAFETY MEETING	2/16/2025	07:10					PRE-JOB SAFETY MEETING
6	PRESSURE TEST	2/16/2025	08:09				5383	PRESSURE TEST LINES
7	WATER SPACER	2/16/2025	08:12	8.34	6	60	983	60 BBLs WATER SPACER
8	EZ SPACER	2/16/2025	08:22	11	6	40	755	40 BBLs EZ SPACER AT 11 PPG
9	LEAD CEMENT	2/16/2025	08:29	12.7	6.5	50	559	LEAD 838 SKS/312 BBLs AT 12.7 PPG
10	LEAD CEMENT	2/16/2025	08:38	12.7	5.5	50	451	100 BBLs LEAD CEMENT PUMPED
11	LEAD CEMENT	2/16/2025	08:46	12.7	5.5	50	395	150 BBLs LEAD CEMENT PUMPED
12	LEAD CEMENT	2/16/2025	08:55	12.7	5.5	50	423	200 BBLs LEAD CEMENT PUMPED
13	LEAD CEMENT	2/16/2025	09:04	12.7	5.5	50	409	250 BBLs LEAD CEMENT PUMPED
14	LEAD CEMENT	2/16/2025	09:13	12.7	5.5	62	445	312 BBLs LEAD CEMENT PUMPED
15	TAIL CEMENT	2/16/2025	09:31	13.5	5.5	50	475	TAIL 1161 SKS/382 BBLs AT 13.5 PPG
16	TAIL CEMENT	2/16/2025	09:41	13.5	5.5	50	461	100 BBLs TAIL CEMENT PUMPED
17	TAIL CEMENT	2/16/2025	09:50	13.5	5.5	50	471	150 BBLs TAIL CEMENT PUMPED
18	TAIL CEMENT	2/16/2025	09:59	13.5	6	50	473	200 BBLs TAIL CEMENT PUMPED
19	TAIL CEMENT	2/16/2025	10:07	13.5	6	50	479	250 BBLs TAIL CEMENT PUMPED
20	TAIL CEMENT	2/16/2025	10:16	13.5	6	50	491	300 BBLs TAIL CEMENT PUMPED
21	TAIL CEMENT	2/16/2025	10:24	13.5	6	82	495	382 BBLs TAIL CEMENT PUMPED
22	SHUTDOWN	2/16/2025	10:47					WASH PUMP AND LINES, DROP PLUG
23	DISPLACEMENT	2/16/2025	10:55	8.5	9.5	50	1797	DISPLACEMENT KCL WATER
24	DISPLACEMENT	2/16/2025	11:03	8.5	9.5	50	2445	100 BBLs DISPLACEMENT PUMPED
25	DISPLACEMENT	2/16/2025	11:09	8.5	9.5	72	3332	172 BBLs DISPLACEMENT PUMPED
26	SLOW RATE	2/16/2025	11:16	8.5	4	10	2761	SLOW RATE
27	LAND PLUG	2/16/2025	11:19				3800	LAND PLUG, FULL RETURNS
28	CHECK FLOATS	2/16/2025	11:25					FLOATS HELD, 2.5 BBLs FLOW BACK
29	RIG DOWN	2/16/2025	11:30					RIG DOWN MEETING, RIG DOWN
30	LEAVE LOCATION	2/16/2025	12:30					CREW LEAVE LOCATION

Pump Diagrams



JobMaster Program Version 5.01C1
Job Number: 94647
Customer: TERRA
Well Name: FED RG 322-13



Job Start: Sunday, February 16, 2025