



TEP ROCKY MOUNTAIN LLC SURFACE POST JOB REPORT

**FEDERAL #RG 321-13-298 05-103-12582
S:13 T:2S R:98W Rio Blanco CO**

CallSheet #: 92633
Proposal #: 78206



SURFACE Post Job Report

Attention: Mr. Dustin Childers | (936) 524-8828 | dchilders@terraep.com
Terra Energy Partners, LLC
4828 Loop Central Dr., Suite 900 | Houston, TX 77081

Dear Mr. Dustin Childers,

Thank you for the opportunity to provide cementing services on this well. American Cementing strives to achieve complete customer satisfaction. If you have any questions regarding the services or data provided, please contact American Cementing at any time.

Sincerely,

Krystal Schell

Field Engineer I | (719) 992-1830 | krystal.schell@americacementing.com

Field Office 28730 US-6, Rifle, CO 81650
Phone: (970) 657-1187

Job Details & Summary

Geometry

Type	Function	OD (in)	ID (in)	Weight (lb/ft)	Thread	Top (ft)	Bottom (ft)	Excess (%)
Casing	Outer	20	19.5	53	n/a	0	80	0
Open Hole	Outer	n/a	17.5	n/a	n/a	80	1364	30
Casing	Inner	13.375	12.615	54.5	n/a	0	1364	0

Equipment / People

Unit Type	Unit	Power Unit	Employee #1
Field Storage Silo	FSS-470		
Cement Trailer Float	CTF-249	TRC-769	Duewayne Jackson
Light Duty Vehicles	LDV-157		Bradley Boyd
Cement Pump Float	CPF-136	TRH-959	Francisco Castillo

Timing

Event	Date/Time
ERTS	08/18/2024 00:00
Call Out	8/17/2024 17:46
Depart Facility	8/17/2024 19:00
On Location	8/18/2024 00:00
Rig Up Iron	8/18/2024 00:15
Job Started	8/18/2024 01:07
Job Completed	8/18/2024 03:20
Rig Down Iron	8/18/2024 03:25
Depart Location	8/18/2024 05:00

General Job Information

Metrics	Value
Well Fluid Density	9.1 lb/gal
Well Fluid Type	WBM
Rig Circulation Vol	420 bbls
Rig Circulation Time	0.5 hours
Calculated Displacement	205 bbls
Actual Displacement	205 bbls
Total Spacer to Surface	75 bbls
Total CMT to Surface	55 bbls
Well Topped Out	No

Job Details

Metrics	Value
Flare Prior to Job	No
Flare Prior to Job	0 units
Flare During Job	No
Flare During Job	0 units
Flare at End of Job	No
Flare at End of Job	0 units
Well Full Prior to Job	Yes
Well Fluid Density Into Well	9.1 lb/gal
Well Fluid Density Out of Well	9.1 lb/gal

Job Details (cont.)

Metrics	Value
BHCT	84 °F
BHST	102 °F

Water Analysis

Metrics	Value	Recommended
Water Source	Upright Rig Tank	
Temperature	73 °F	50-80 °F
pH Level	7	5.5-8.5
Chlorides	0 mg/L	0-3000 mg/L
Total Alkalinity	240	0-1000
Total Hardness	250 mg/L	0-500 mg/L
Carbonates	0 mg/L	0-100 mg/L
Sulfates	200 mg/L	0-1500 mg/L
Potassium	250 mg/L	0-3000 mg/L
Iron	0 mg/L	0-300 mg/L

Circulation

Lost Circulation Experienced
No

Job Execution Information

Fluid	Product	Function	Density (lb/gal)	Yield (ft ³ /sk)	Water Rq. (gal/sk)	Water Rq. (gal/bbl)	Volume (sks)	Volume (bbl)	Designed Top (ft)
1	Flush	Flush	8.34			42.00		20.00	0
2	Primary	Primary	12.30	2.31	13.17		547.00	224.96	0
3	Displacement	DisplacementFinal	8.34			42.00		205.00	0

Job Fluid Details

Fluid	Type	Fluid	Product	Function	Conc.	Uom
2	Primary	Primary	ASTM TYPE IL	Cement	100.00	%
2	Primary	Primary	A-10	Accelerator	5.00	%BWOB
2	Primary	Primary	A-2	Accelerator	3.00	lb/sk
2	Primary	Primary	A-7P	Accelerator	2.00	lb/sk
2	Primary	Primary	IntegraSeal POLI	LostCirculation	0.25	lb/sk
2	Primary	Primary	STATIC FREE	Other	0.01	lb/sk
2	Primary	Primary	XCem-311	Defoamer	0.30	%BWOB

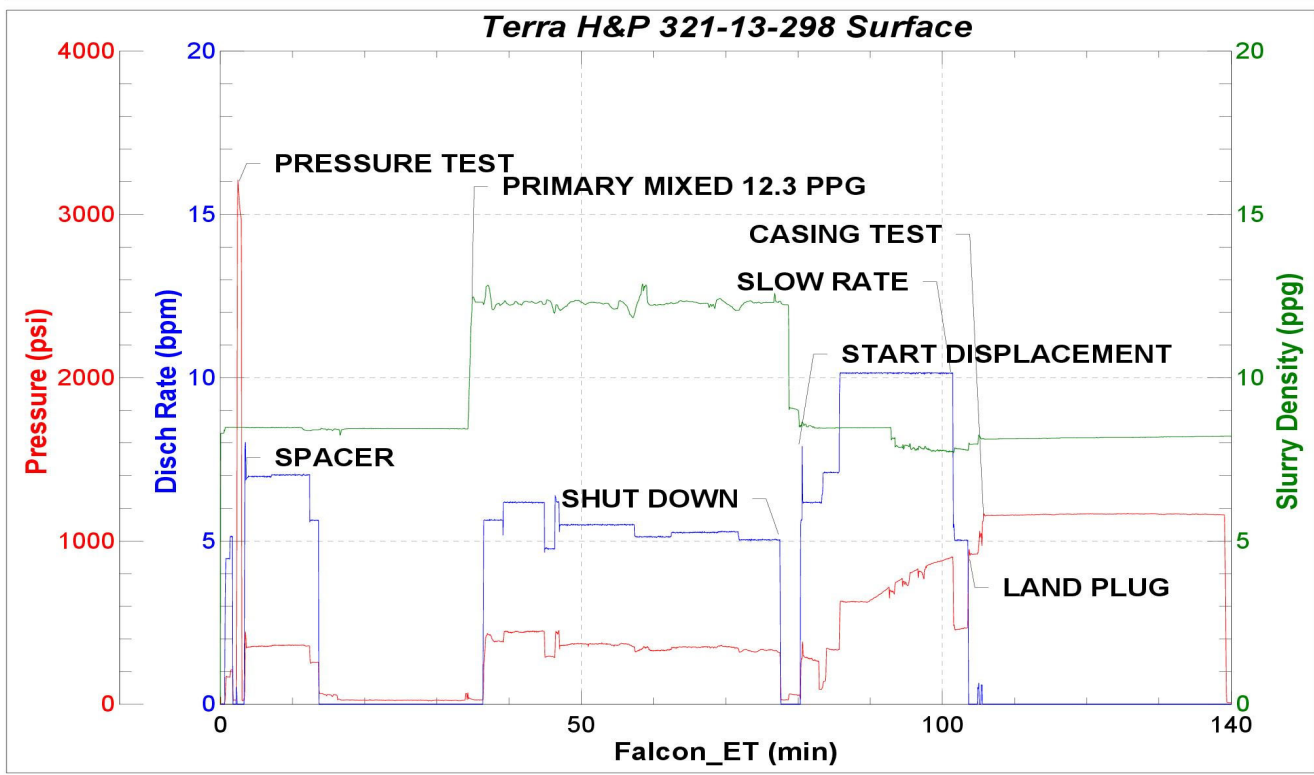
Job Logs

Line	Event	Date (MM/DD/YY)	Time (HH:MM)	Density (lb/gal)	Pump Rate (bpm)	Pump Volume (bbls)	Pipe Pressure (psi)	Comment
1	Callout	8/17/2024	17:30					On location at 12:00AM
2	Depart Location	8/17/2024	19:00					Crew left the yard
3	Arrive On Location	8/18/2024	00:00					Crew on location
4	Rig Up Iron	8/18/2024	00:15					Rig up meeting, rig up
5	Safety Meeting	8/18/2024	01:00					Pre job safety meeting
6	Pressure Test Lines	8/18/2024	01:05				3000	Pressure test lines to 3000 psi
7	Pump Spacer	8/18/2024	01:09	8.34	6	75	350	Water spacer
8	Pump Cement	8/18/2024	01:49	12.3	6	50	334	Primary 547 sks/227 bbls cementat 12.3#
9	Pump Cement	8/18/2024	01:58	12.3	5	50	315	100 bbl cement pumped
10	Pump Cement	8/18/2024	02:07	12.3	5	50	321	150 bbl cement pumped
11	Pump Cement	8/18/2024	02:20	12.3	5		300	227 bbl cement pumped
12	Shutdown	8/18/2024	02:23					Shut down drop plug
13	Pump Displacement	8/18/2024	02:24	8.34	10	50	628	Displacement water
14	Pump Displacement	8/18/2024	02:35	8.34	10	50	707	100 bbl displacement pumped
15	Pump Displacement	8/18/2024	02:36	8.34	10	50	819	150 bbl displacement pumped
16	Pump Displacement	8/18/2024	02:37	8.34	10	45	825	196 bbl displacement pumped
17	Slow Pump Rate	8/18/2024	02:38	8.34	5	10	456	slow rate
18	Land Plug	8/18/2024	02:48	8.34	5		900	Land plug, 565bbl cement to surface
19	Test Casing	8/18/2024	03:20	8.34			1100	Test casing
20	Check Floats	8/18/2024	03:21					Got 1 bbl back to truck
21	Rig Down Iron	8/18/2024	03:25					Rig down meeting, rig down
22	Depart Location	8/18/2024	05:00					Crew left location

Pump Diagrams



JobMaster Program Version 5.01C1
Job Number: 92633
Customer: Terra
Well Name: 321-13-298



Job Start: Sunday, August 18, 2024