



TEP ROCKY MOUNTAIN LLC LONG STRING POST JOB REPORT

**FEDERAL #RG 321-13-298 05-103-12582
S:13 T:2S R:98W Rio Blanco CO**

CallSheet #: 94384
Proposal #: 80993



LONG STRING Post Job Report

Attention: Mr. Dustin Childers | (936) 524-8828 | dchilders@terraep.com
Terra Energy Partners, LLC
4828 Loop Central Dr., Suite 900 | Houston, TX 77081

Dear Mr. Dustin Childers,

Thank you for the opportunity to provide cementing services on this well. American Cementing strives to achieve complete customer satisfaction. If you have any questions regarding the services or data provided, please contact American Cementing at any time.

Sincerely,

Addison Kneale

Field Engineer I | (904) 228-9560 | addison.kneale@americacementing.com

Field Office 28730 US-6, Rifle, CO 81650
Phone: (970) 657-1187

Job Details & Summary

Geometry

Type	Function	OD (in)	ID (in)	Weight (lb/ft)	Thread	Top (ft)	Bottom (ft)	Excess (%)
Casing	Outer	9.625	8.921	36	n/a	0	3069	0
Open Hole	Outer	n/a	8.75	n/a	n/a	3062	7910	75
Open Hole	Outer	n/a	8.75	n/a	n/a	7910	11864	75
Casing	Inner	4.5	4	11.6	n/a	0	11864	0

Equipment / People

Unit Type	Unit	Power Unit	Employee #1
Field Storage Silo	FSS-473		
Field Storage Silo	FSS-792		
Cement Trailer Float	CTF-555	TRC-249	Steven Richey
Cement Trailer Float	CTF-161	TRC-425	Duewayne Jackson
Cement Trailer Float	CTF-246	TRC-202	Stephen Lancaster
Light Duty Vehicles	LDV-157		Francisco Castillo
Cement Pump Float	CPF-053	TRH-677	Ivan Gonzales

Timing

Event	Date/Time
ERTS	01/25/2025 07:00
Call Out	1/24/2025 23:00
Depart Facility	1/25/2025 03:00
On Location	1/25/2025 05:30
Rig Up Iron	1/25/2025 06:00
Job Started	1/25/2025 10:43
Job Completed	1/25/2025 14:09
Rig Down Iron	1/25/2025 14:30
Depart Location	1/25/2025 16:00

General Job Information

Metrics	Value
Well Fluid Density	9.5 lb/gal
Well Fluid Type	WBM
Rig Circulation Vol	1200 bbls
Rig Circulation Time	2 hours
Calculated Displacement	183 bbls
Actual Displacement	183 bbls
Total Spacer to Surface	0 bbls
Total CMT to Surface	0 bbls
Well Topped Out	N/A

Job Details

Metrics	Value
Well Full Prior to Job	Yes
Well Fluid Density Into Well	9.5 lb/gal
Well Fluid Density Out of Well	9.5 lb/gal

Job Details (cont.)

Metrics	Value
BHCT	205 °F
BHST	270 °F

Water Analysis

Metrics	Value	Recommended
Water Source	None	
Temperature	75 °F	50-80 °F
pH Level	7	5.5-8.5
Chlorides	0 mg/L	0-3000 mg/L
Total Alkalinity	240	0-1000
Total Hardness	250 mg/L	0-500 mg/L
Carbonates	0 mg/L	0-100 mg/L
Sulfates	200 mg/L	0-1500 mg/L
Potassium	250 mg/L	0-3000 mg/L
Iron	0 mg/L	0-300 mg/L

Circulation

Lost Circulation Experienced

No

Job Execution Information

Fluid	Product	Function	Density (lb/gal)	Yield (ft ³ /sk)	Water Rq. (gal/sk)	Water Rq. (gal/bbl)	Volume (sks)	Volume (bbl)	Designed Top (ft)
1	Water	Flush	8.34			42.00		60.00	3491
2	IntegraGuard EZ II	Spacer	11.00			33.43		40.00	4118
3	Lead	Lead	12.70	2.09	11.24		868.00	323.29	4536
4	Tail	Tail	13.50	1.85	8.98		1161.00	381.82	7910
5	Displacement	DisplacementFinal	8.34			42.00		183.00	0

Job Fluid Details

Fluid	Type	Fluid	Product	Function	Conc.	Uom
2	Spacer	IntegraGuard EZ II	S-8	StrengthRetgression	169.68	lb/bbl
2	Spacer	IntegraGuard EZ II	ASA-301	Viscosifier	3.00	lb/bbl
2	Spacer	IntegraGuard EZ II	SAPP	Surfactant	10.00	lb/bbl
2	Spacer	IntegraGuard EZ II	XCem-311	Defoamer	0.50	lb/bbl
3	Lead	Lead	ASTM TYPE IL	Cement	100.00	%
3	Lead	Lead	BA-90	BondEnhancer	8.00	lb/sk
3	Lead	Lead	FL-66	FluidLoss	0.30	%BWOB
3	Lead	Lead	GW-86	Viscosifier	0.10	%BWOB
3	Lead	Lead	IntegraSeal PHENO	LostCirculation	3.00	lb/sk
3	Lead	Lead	IntegraSeal POLI	LostCirculation	0.25	lb/sk
3	Lead	Lead	R-3	Retarder	0.60	%BWOB
3	Lead	Lead	STATIC FREE	Other	0.01	lb/sk
3	Lead	Lead	XCem-311	Defoamer	0.30	%BWOB
4	Tail	Tail	BA-90	BondEnhancer	10.00	%
4	Tail	Tail	CLASS G	Cement	70.00	%
4	Tail	Tail	FLY ASH (POZZOLAN)	Extender	20.00	%
4	Tail	Tail	BENTONITE	Viscosifier	6.00	%BWOB
4	Tail	Tail	FL-24	FluidLoss	0.40	%BWOB
4	Tail	Tail	GW-86	Viscosifier	0.10	%BWOB
4	Tail	Tail	IntegraSeal PHENO	LostCirculation	3.00	lb/sk
4	Tail	Tail	R-3	Retarder	0.25	%BWOB
4	Tail	Tail	S-8	StrengthRetgression	25.00	%BWOB
4	Tail	Tail	XCem-311	Defoamer	0.30	%BWOB

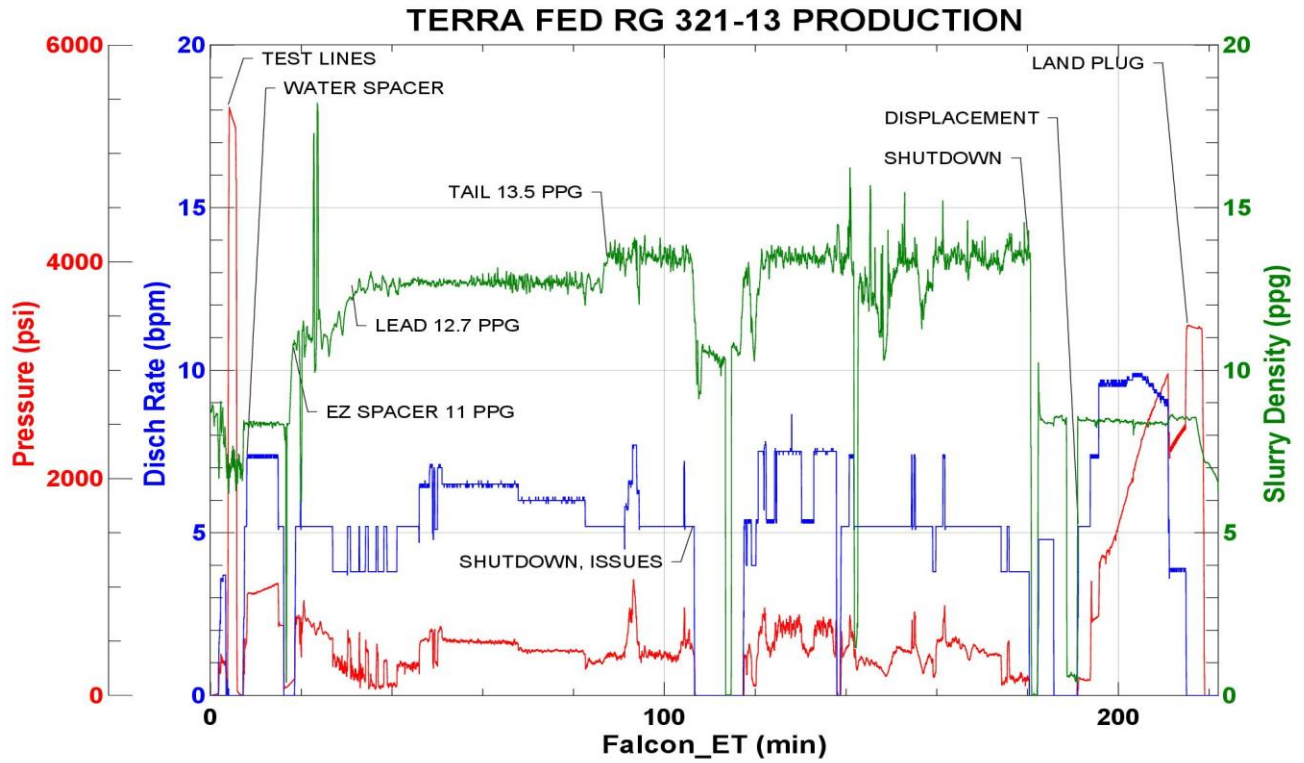
Job Logs

Line	Event	Date (MM/DD/YY)	Time (HH:MM)	Density (lb/gal)	Pump Rate (bpm)	Pump Volume (bbls)	Pipe Pressure (psi)	Comment
1	CALLOUT	1/24/2025	23:00					ON LOCATION AT 07:00 HRS
2	LEAVE THE YARD	1/25/2025	03:00					CREW LEAVE THE YARD
3	ON LOCATION	1/25/2025	05:30					CREW ON LOCATION
4	RIG UP	1/25/2025	06:00					RIG UP MEETING, RIG UP
5	SAFETY MEETING	1/25/2025	10:00					PRE-JOB SAFETY MEETING
6	PRESSURE TEST	1/25/2025	10:39				5421	PRESSURE TEST LINES
7	WATER SPACER	1/25/2025	10:43	8.34	7	60	953	60 BBLS WATER SPACER
8	EZ SPACER	1/25/2025	10:54	11	5	40	687	40 BBLS EZ SPACER AT 11 PPG
9	LEAD CEMENT	1/25/2025	11:02	12.7	5	50	307	LEAD 868 SKS/323 BBLS AT 12.7 PPG
10	LEAD CEMENT	1/25/2025	11:15	12.7	5	50	303	100 BBLS LEAD CEMENT PUMPED
11	LEAD CEMENT	1/25/2025	11:24	12.7	6.5	50	561	150 BBLS LEAD CEMENT PUMPED
12	LEAD CEMENT	1/25/2025	11:32	12.7	6.5	50	531	200 BBLS LEAD CEMENT PUMPED
13	LEAD CEMENT	1/25/2025	11:39	12.7	6	50	481	250 BBLS LEAD CEMENT PUMPED
14	LEAD CEMENT	1/25/2025	11:48	12.7	6	73	469	323 BBLS LEAD CEMENT PUMPED
15	TAIL CEMENT	1/25/2025	12:02	13.5	5	50	483	TAIL 1161 SKS/382 BBLS AT 13.5 PPG, TOP OF TAIL 4,873'
16	TAIL CEMENT	1/25/2025	12:11	13.5	5	50	567	100 BBLS TAIL CEMENT PUMPED
17	TAIL CEMENT	1/25/2025	12:20	13.5	7.5	50	735	150 BBLS TAIL CEMENT PUMPED
18	TAIL CEMENT	1/25/2025	12:40	13.5	5.5	50	511	200 BBLS TAIL CEMENT PUMPED
19	TAIL CEMENT	1/25/2025	12:47	13.5	5	50	327	250 BBLS TAIL CEMENT PUMPED
20	TAIL CEMENT	1/25/2025	12:57	13.5	5	50	381	300 BBLS TAIL CEMENT PUMPED
21	TAIL CEMENT	1/25/2025	13:07	13.5	5	82	539	382 BBLS TAIL CEMENT PUMPED
22	SHUTDOWN	1/25/2025	13:35					WASH PUMP AND LINES, DROP PLUG
23	DISPLACEMENT	1/25/2025	13:46	8.4	9.5	50	1373	DISPLACEMENT KCL WATER
24	DISPLACEMENT	1/25/2025	13:53	8.4	9.5	50	2147	100 BBLS DISPLACEMENT PUMPED
25	DISPLACEMENT	1/25/2025	13:58	8.4	10	73	3008	173 BBLS DISPLACEMENT PUMPED
26	SLOW RATE	1/25/2025	14:06	8.4	4	10	2571	SLOW RATE
27	LAND PLUG	1/25/2025	14:09				3465	LAND PLUG, FULL RETURNS
28	CHECK FLOATS	1/25/2025	14:14					FLOATS HELD, 2.5 BBLS FLOW BACK
29	RIG DOWN	1/25/2025	14:30					RIG DOWN MEETING, RIG DOWN
30	LEAVE LOCATION	1/25/2025	16:00					CREW LEAVE LOCATION

Pump Diagrams



JobMaster Program Version 5.01C1
Job Number: 94384
Customer: TERRA
Well Name: FED RG 321-13



Job Start: Saturday, January 25, 2025