



TEP ROCKY MOUNTAIN LLC INTERMEDIATE POST JOB REPORT

**FEDERAL #RG 321-13-298 05-103-12582
S:13 T:2S R:98W Rio Blanco CO**

CallSheet #: 94383
Proposal #: 80992



INTERMEDIATE Post Job Report

Attention: Mr. Dustin Childers | (936) 524-8828 | dchilders@terraep.com
Terra Energy Partners, LLC
4828 Loop Central Dr., Suite 900 | Houston, TX 77081

Dear Mr. Dustin Childers,

Thank you for the opportunity to provide cementing services on this well. American Cementing strives to achieve complete customer satisfaction. If you have any questions regarding the services or data provided, please contact American Cementing at any time.

Sincerely,

Krystal Schell

Field Engineer I | (719) 992-1830 | krystal.schell@americacementing.com

Field Office 28730 US-6, Rifle, CO 81650
Phone: (970) 657-1187

Job Details & Summary

Geometry

Type	Function	OD (in)	ID (in)	Weight (lb/ft)	Thread	Top (ft)	Bottom (ft)	Excess (%)
Casing	Outer	13.375	12.615	54.5	n/a	0	1364	0
Open Hole	Outer	n/a	12.25	n/a	n/a	1338	3069	75
Casing	Inner	9.625	8.921	36	n/a	0	3069	0

Equipment / People

Unit Type	Unit	Power Unit	Employee #1
Cement Trailer Float	CTF-273	TRC-115	Matthew Pinkney
Light Duty Vehicles	LDV-145		Collin Woronovitch
Light Duty Vehicles	LDV-168		James Lujan
Cement Pump Float	CPF-011	TRH-1522	Joel Carrasco

Timing

Event	Date/Time
ERTS	01/19/2025 07:00
Call Out	1/19/2025 01:00
Depart Facility	1/19/2025 04:00
On Location	1/19/2025 06:00
Rig Up Iron	1/19/2025 06:15
Job Started	1/19/2025 12:25
Job Completed	1/19/2025 13:35
Rig Down Iron	1/19/2025 13:55
Depart Location	1/19/2025 14:45

General Job Information

Metrics	Value
Well Fluid Density	9 lb/gal
Well Fluid Type	WBM
Rig Circulation Vol	300 bbls
Rig Circulation Time	0.5 hours
Calculated Displacement	237 bbls
Actual Displacement	237 bbls
Total Spacer to Surface	0 bbls
Total CMT to Surface	0 bbls
Well Topped Out	No

Job Details

Metrics	Value
Flare Prior to Job	No
Flare Prior to Job	N/A units
Flare During Job	No
Flare During Job	N/A units
Flare at End of Job	No
Flare at End of Job	N/A units
Well Full Prior to Job	Yes
Well Fluid Density Into Well	9 lb/gal
Well Fluid Density Out of Well	9 lb/gal

Job Details (cont.)

Metrics	Value
BHCT	86 °F
BHST	117 °F

Water Analysis

Metrics	Value	Recommended
Water Source	Upright Rig Tank	
Temperature	67 °F	50-80 °F
pH Level	7	5.5-8.5
Chlorides	40 mg/L	0-3000 mg/L
Total Alkalinity	120	0-1000
Total Hardness	100 mg/L	0-500 mg/L
Carbonates	N/A mg/L	0-100 mg/L
Sulfates	<200 mg/L	0-1500 mg/L
Potassium	140 mg/L	0-3000 mg/L
Iron	0 mg/L	0-300 mg/L



Circulation

Lost Circulation Experienced
No

Job Execution Information

Fluid	Product	Function	Density (lb/gal)	Yield (ft ³ /sk)	Water Rq. (gal/sk)	Water Rq. (gal/bbl)	Volume (sks)	Volume (bbl)	Designed Top (ft)
1	Water	Flush	8.34			42.00		20.00	1853
2	Lead	Lead	12.80	2.03	11.16		170.00	61.59	2058
3	Tail	Tail	13.50	1.76	9.10		128.00	40.08	2687
4	Water	DisplacementFinal	8.34			42.00		237.00	0

Job Fluid Details

Fluid	Type	Fluid	Product	Function	Conc.	Uom
2	Lead	Lead	ASTM TYPE IL	Cement	100.00	%
2	Lead	Lead	A-10	Accelerator	5.00	%BWOB
2	Lead	Lead	A-2	Accelerator	2.00	lb/sk
2	Lead	Lead	A-7P	Accelerator	2.00	lb/sk
2	Lead	Lead	IntegraSeal POLI	LostCirculation	0.25	lb/sk
2	Lead	Lead	STATIC FREE	Other	0.01	lb/sk
2	Lead	Lead	XCem-311	Defoamer	0.30	%BWOB
3	Tail	Tail	ASTM TYPE IL	Cement	100.00	%
3	Tail	Tail	A-10	Accelerator	5.00	%BWOB
3	Tail	Tail	A-2	Accelerator	2.00	lb/sk
3	Tail	Tail	A-7P	Accelerator	2.00	lb/sk
3	Tail	Tail	IntegraSeal POLI	LostCirculation	0.25	lb/sk
3	Tail	Tail	STATIC FREE	Other	0.01	lb/sk
3	Tail	Tail	XCem-311	Defoamer	0.30	%BWOB

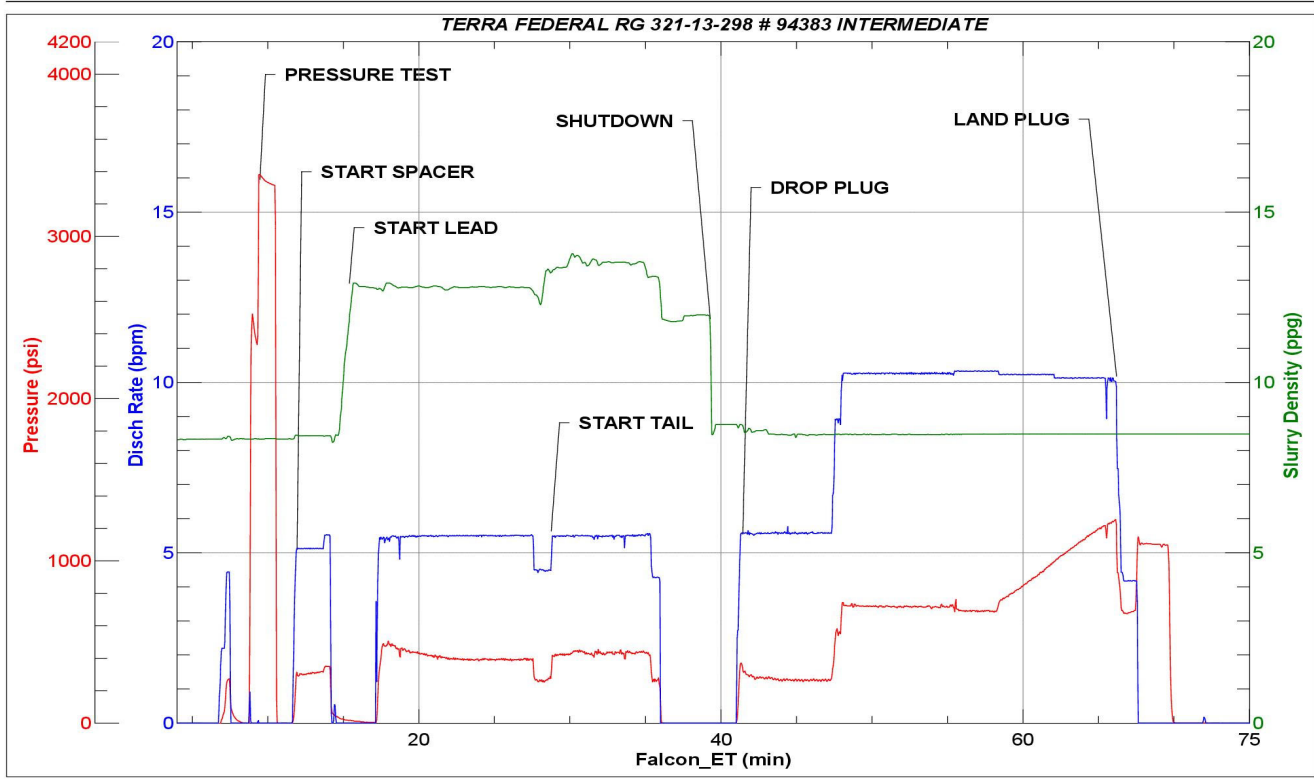
Job Logs

Line	Event	Date (MM/DD/YY)	Time (HH:MM)	Density (lb/gal)	Pump Rate (bpm)	Pump Volume (bbls)	Pipe Pressure (psi)	Comment
1	Callout	1/19/2025	01:00					CUSTOMER REQUESTED CREW ON LOCATION @ 8:00
2	Arrive On Location	1/19/2025	06:00					
3	Safety Meeting	1/19/2025	06:10					PRE-RIG UP SAFETY MEETING
4	Rig Up Iron	1/19/2025	06:15					RIG IN IRON
5	Safety Meeting	1/19/2025	11:54					PRE JOB-SAFETY MEETING WITH RIG CREW AND COMPANY MAN
6	Start Job	1/19/2025	12:25					
7	Pressure Test Lines	1/19/2025	12:34	8.34	1	1	3000	
8	Pump Spacer	1/19/2025	12:37	8.34	5	1	348	START 20 BBLs FRESH WATER SPACER
9	Pump Spacer	1/19/2025	12:41	8.34	5	20	342	END SPACER
10	Pump Lead Cement	1/19/2025	12:41	12.8	5.5	1	362	START 62 BBLs LEAD CEMENT @ 12.8 PPG (2.03,11.16) 170 SKS
11	Pump Lead Cement	1/19/2025	12:48	12.8	5.5	30	475	30 GONE ON LEAD
12	Pump Lead Cement	1/19/2025	12:54	12.8	4.5	62	395	END LEAD SLURRY
13	Pump Tail Cement	1/19/2025	12:54	13.5	4.5	1	259	START 40 BBLs TAIL CEMENT @ 13.5 PPG (1.76,9.10) 128 SKS
14	Pump Tail Cement	1/19/2025	13:02	13.5	5.5	40	349	END TAIL SLURRY
15	Shutdown	1/19/2025	13:02					SHUTDOWN/ WASH UP ON TOP OF PLUG
16	Drop Top Plug	1/19/2025	13:07					DROP PLUG
17	Pump Displacement	1/19/2025	13:07	8.34	5.5	1	318	START 237 BBLs FRESH WATER DISPLACEMENT
18	Pump Displacement	1/19/2025	13:15	8.34	10	50	739	50 GONE ON DISPLACEMENT
19	Pump Displacement	1/19/2025	13:20	8.34	10	100	733	100 GONE ON DISPLACEMENT
20	Pump Displacement	1/19/2025	13:25	8.34	10	150	794	150 GONE ON DISPLACEMENT
21	Pump Displacement	1/19/2025	13:30	8.34	10	200	1110	200 GONE ON DISPLACEMENT
22	Pressure before slow	1/19/2025	13:33	8.34	10	227	1250	PRESSURE BEFORE SLOW
23	Slow Pump Rate	1/19/2025	13:33	8.34	4	227	683	SLOW RATE PRESSURE
24	Final lift pressure	1/19/2025	13:34	8.34	4	237	690	690 PSI FINAL LIFT PRESSURE
25	Land Plug	1/19/2025	13:34	8.34	4	237	1120	LAND PLUG @ 1120 PSI
26	Check Floats	1/19/2025	13:35					1 BBLs BACK UPON FLOAT CHECK
27	End Job	1/19/2025	13:35					END OF CEMENTING SERVICES
28	Safety Meeting	1/19/2025	13:50					PRE-RIG DOWN SAFETY MEETING
29	Rig Down Iron	1/19/2025	13:55					RIG DOWN IRON/ PRE-CONVOY SAFETY MEETING
30	Depart Location	1/19/2025	14:45					DEPART LOCATION FOR RCO YARD

Pump Diagrams



JobMaster Program Version 5.01C1
 Job Number: 94383
 Customer: TERRA
 Well Name: FEDERAL RG 321-13 298



Job Start: Sunday, January 19, 2025