



TEP ROCKY MOUNTAIN LLC INTERMEDIATE POST JOB REPORT

**FEDERAL #RG 21-13-298 05-103-12591
S:13 T:2S R:98W Rio Blanco CO**

CallSheet #: 94300
Proposal #: 80836



INTERMEDIATE Post Job Report

Attention: Mr. Dustin Childers | (936) 524-8828 | dchilders@terraep.com
Terra Energy Partners, LLC
4828 Loop Central Dr., Suite 900 | Houston, TX 77081

Dear Mr. Dustin Childers,

Thank you for the opportunity to provide cementing services on this well. American Cementing strives to achieve complete customer satisfaction. If you have any questions regarding the services or data provided, please contact American Cementing at any time.

Sincerely,

Addison Kneale

Field Engineer I | (904) 228-9560 | addison.kneale@americacementing.com

Field Office 28730 US-6, Rifle, CO 81650
Phone: (970) 657-1187

Job Details & Summary

Geometry

Type	Function	OD (in)	ID (in)	Weight (lb/ft)	Thread	Top (ft)	Bottom (ft)	Excess (%)
Casing	Outer	13.375	12.615	54.5	n/a	0	1343	0
Open Hole	Outer	n/a	12.25	n/a	n/a	1343	3107	75
Casing	Inner	9.625	8.921	36	n/a	0	3107	0

Equipment / People

Unit Type	Unit	Power Unit	Employee #1
Cement Trailer Float	CTF-555	TRC-424	Daniel Balint
Light Duty Vehicles	LDV-157		Francisco Castillo
Cement Pump Float	CPF-053	TRH-677	Jacob Kirchenwitz

Timing

Event	Date/Time
ERTS	01/11/2025 21:00
Call Out	1/11/2025 17:30
Depart Facility	1/11/2025 18:30
On Location	1/11/2025 20:00
Rig Up Iron	1/11/2025 20:15
Job Started	1/12/2025 00:00
Job Completed	1/12/2025 00:59
Rig Down Iron	1/12/2025 01:15
Depart Location	1/12/2025 02:00

General Job Information

Metrics	Value
Well Fluid Density	9.1 lb/gal
Well Fluid Type	WBM
Rig Circulation Vol	300 bbls
Rig Circulation Time	0.5 hours
Calculated Displacement	237 bbls
Actual Displacement	237 bbls
Total Spacer to Surface	0 bbls
Total CMT to Surface	0 bbls
Well Topped Out	No

Job Details

Metrics	Value
Well Full Prior to Job	Yes
Well Fluid Density Into Well	9.1 lb/gal
Well Fluid Density Out of Well	9.1 lb/gal

Job Details (cont.)

Metrics	Value
BHCT	86 °F
BHST	117 °F

Water Analysis

Metrics	Value	Recommended
Water Source	None	
Temperature	77 °F	50-80 °F
pH Level	7	5.5-8.5
Chlorides	0 mg/L	0-3000 mg/L
Total Alkalinity	240	0-1000
Total Hardness	250 mg/L	0-500 mg/L
Carbonates	0 mg/L	0-100 mg/L
Sulfates	200 mg/L	0-1500 mg/L
Potassium	250 mg/L	0-3000 mg/L
Iron	0 mg/L	0-300 mg/L

Circulation

Lost Circulation Experienced
No

Job Execution Information

Fluid	Product	Function	Density (lb/gal)	Yield (ft ³ /sk)	Water Rq. (gal/sk)	Water Rq. (gal/bbl)	Volume (sk)	Volume (bbl)	Designed Top (ft)
1	Water	Flush	8.34			42.00		20.00	1865
2	Lead	Lead	12.80	2.03	11.16		171.00	61.95	2070
3	Tail	Tail	13.50	1.76	9.10		128.00	40.08	2702
4	Water	DisplacementFinal	8.34			42.00		237.00	0

Job Fluid Details

Fluid	Type	Fluid	Product	Function	Conc.	Uom
2	Lead	Lead	ASTM TYPE IL	Cement	100.00	%
2	Lead	Lead	A-10	Accelerator	5.00	%BWOB
2	Lead	Lead	A-2	Accelerator	2.00	lb/sk
2	Lead	Lead	A-7P	Accelerator	2.00	lb/sk
2	Lead	Lead	IntegraSeal POLI	LostCirculation	0.25	lb/sk
2	Lead	Lead	STATIC FREE	Other	0.01	lb/sk
2	Lead	Lead	XCem-311	Defoamer	0.30	%BWOB
3	Tail	Tail	ASTM TYPE IL	Cement	100.00	%
3	Tail	Tail	A-10	Accelerator	5.00	%BWOB
3	Tail	Tail	A-2	Accelerator	2.00	lb/sk
3	Tail	Tail	A-7P	Accelerator	2.00	lb/sk
3	Tail	Tail	IntegraSeal POLI	LostCirculation	0.25	lb/sk
3	Tail	Tail	STATIC FREE	Other	0.01	lb/sk
3	Tail	Tail	XCem-311	Defoamer	0.30	%BWOB

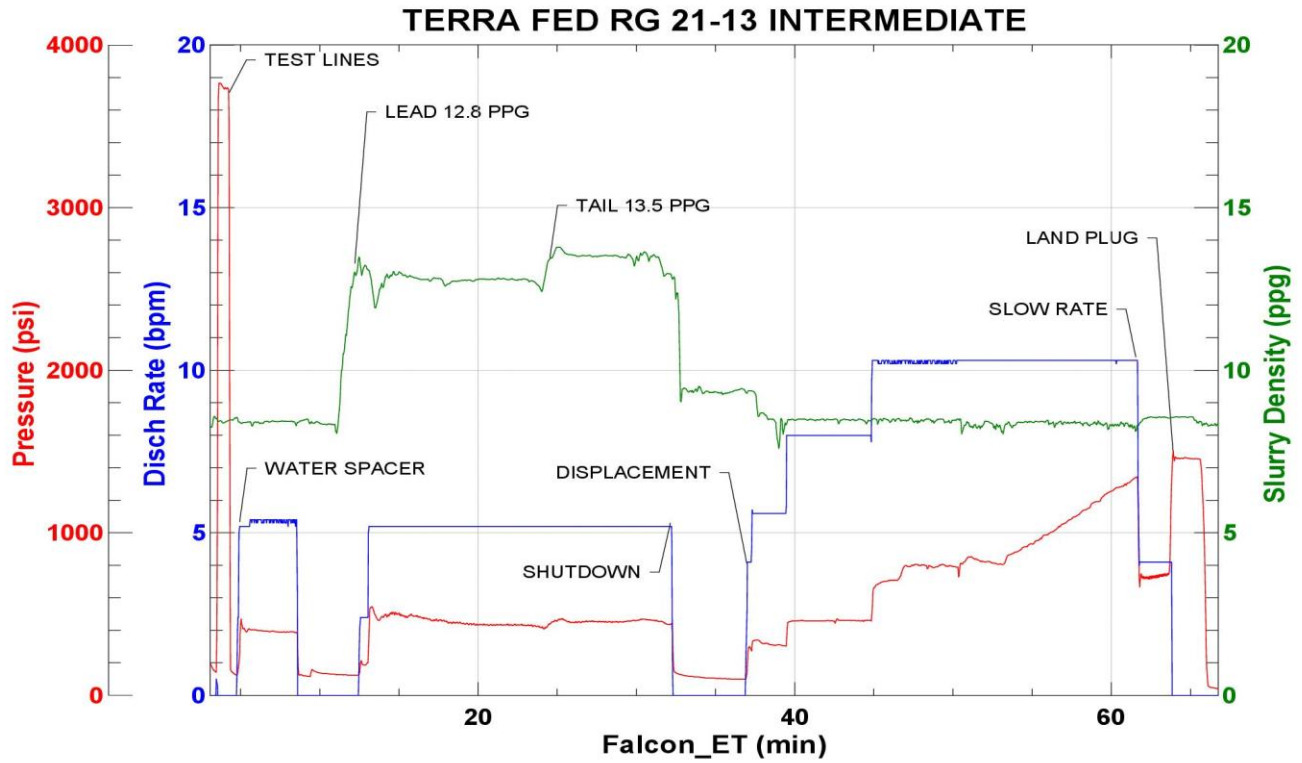
Job Logs

Line	Event	Date (MM/DD/YY)	Time (HH:MM)	Density (lb/gal)	Pump Rate (bpm)	Pump Volume (bbls)	Pipe Pressure (psi)	Comment
1	CALLOUT	1/11/2025	17:30					ON LOCATION AT 21:00 HRS
2	LEAVE THE YARD	1/11/2025	18:30					CREW LEAVE THE YARD
3	ON LOCATION	1/11/2025	20:00					CREW ON LOCATION
4	RIG UP	1/11/2025	20:15					RIG UP MEETING, RIG UP
5	SAFETY MEETING	1/11/2025	23:21					PRE-JOB SAFETY MEETING
6	PRESSURE TEST	1/11/2025	23:53				3771	PRESSURE TEST LINES
7	WATER SPACER	1/12/2025	00:00	8.34	5	20	3771	WATER SPACER
8	LEAD CEMENT	1/12/2025	00:09	12.8	5	62	437	LEAD 171 SKS/62 BBLs AT 12.8 PPG, TOP OF LEAD 1,343'
9	TAIL CEMENT	1/12/2025	00:19	13.5	5	40	455	TAIL 128 SKS/40 BBLs AT 13.5 PPG, TOP OF TAIL 2,456'
10	SHUTDOWN	1/12/2025	00:27					SHUTDOWN, DROP PLUG
11	DISPLACEMENT	1/12/2025	00:32	8.34	8	50	461	DISPLACEMENT WATER
12	DISPLACEMENT	1/12/2025	00:39	8.34	10	50	789	100 BBLs DISPLACEMENT PUMPED
13	DISPLACEMENT	1/12/2025	00:44	8.34	10	50	915	150 BBLs DISPLACEMENT PUMPED
14	DISPLACEMENT	1/12/2025	00:49	8.34	10	77	1337	227 BBLs DISPLACEMENT PUMPED
15	SLOW RATE	1/12/2025	00:57	8.34	4	10	747	SLOW RATE
16	LAND PLUG	1/12/2025	00:59				1500	LAND PLUG, FULL RETURNS
17	CHECK FLOATS	1/12/2025	01:01					FLOATS HELD, 1 BBL FLOW BACK
18	RIG DOWN	1/12/2025	01:15					RIG DOWN MEETING, RIG DOWN
19	LEAVE LOCATION	1/12/2025	02:00					CREW LEAVE LOCATION

Pump Diagrams



JobMaster Program Version 5.01C1
JobNumber:84300
Customer:TERRA
Well Name: FED RG 21-13-298



Job Start: Saturday, January 11, 2025