



TEP ROCKY MOUNTAIN LLC LONG STRING POST JOB REPORT

**FEDERAL #RG 21-13-298 05-103-12591
S:13 T:2S R:98W Rio Blanco CO**

CallSheet #: 94302
Proposal #: 80837



LONG STRING Post Job Report

Attention: Mr. Dustin Childers | (936) 524-8828 | dchilders@terraep.com
Terra Energy Partners, LLC
4828 Loop Central Dr., Suite 900 | Houston, TX 77081

Dear Mr. Dustin Childers,

Thank you for the opportunity to provide cementing services on this well. American Cementing strives to achieve complete customer satisfaction. If you have any questions regarding the services or data provided, please contact American Cementing at any time.

Sincerely,

Krystal Schell

Field Engineer I | (719) 992-1830 | krystal.schell@americacementing.com

Field Office 28730 US-6, Rifle, CO 81650
Phone: (970) 657-1187

Job Details & Summary

Geometry

Type	Function	OD (in)	ID (in)	Weight (lb/ft)	Thread	Top (ft)	Bottom (ft)	Excess (%)
Casing	Outer	9.625	8.921	36	n/a	0	3077	0
Open Hole	Outer	n/a	8.75	n/a	n/a	3077	7983	75
Open Hole	Outer	n/a	8.75	n/a	n/a	7983	11950	75
Casing	Inner	4.5	4	11.6	n/a	0	11950	0

Equipment / People

Unit Type	Unit	Power Unit	Employee #1
Field Storage Silo	FSS-473		
Field Storage Silo	FSS-792		
Cement Trailer Float	CTF-254	TRC-115	Matthew Pinkney
Cement Trailer Float	CTF-555	TRC-090	Jeffrey Dunaway
Cement Trailer Float	CTF-161	TRC-202	Daniel Balint
Cement Pump Float	CPF-012	TRH-855	Ryan Bonin
Light Duty Vehicles	LDV-147		Eric Brown

Timing

Event	Date/Time
ERTS	01/17/2025 17:00
Call Out	1/17/2025 09:00
Depart Facility	1/17/2025 14:30
On Location	1/17/2025 17:00
Rig Up Iron	1/17/2025 18:30
Job Started	1/17/2025 20:55
Job Completed	1/18/2025 00:29
Rig Down Iron	1/18/2025 01:45
Depart Location	1/18/2025 02:30

General Job Information

Metrics	Value
Well Fluid Density	9.6 lb/gal
Well Fluid Type	WBM
Rig Circulation Vol	1000 bbls
Rig Circulation Time	1 hours
Calculated Displacement	185 bbls
Actual Displacement	185 bbls
Total Spacer to Surface	0 bbls
Total CMT to Surface	0 bbls
Well Topped Out	No
Top Out Volume	N/A bbls

Job Details

Metrics	Value
Flare Prior to Job	No
Flare Prior to Job	N/A units
Flare During Job	No
Flare During Job	N/A units
Flare at End of Job	No
Flare at End of Job	N/A units
Well Full Prior to Job	Yes
Well Fluid Density Into Well	9.6 lb/gal
Well Fluid Density Out of Well	9.6 lb/gal

Job Details (cont.)

Metrics	Value
BHCT	206 °F
BHST	270 °F

Water Analysis

Metrics	Value	Recommended
Water Source	Upright Rig Tank	
Temperature	52 °F	50-80 °F
pH Level	6	5.5-8.5
Chlorides	200 mg/L	0-3000 mg/L
Total Alkalinity	100	0-1000
Total Hardness	50 mg/L	0-500 mg/L
Carbonates	10 mg/L	0-100 mg/L
Sulfates	100 mg/L	0-1500 mg/L
Potassium	200 mg/L	0-3000 mg/L
Iron	0 mg/L	0-300 mg/L

Circulation

Lost Circulation Experienced
No

Job Execution Information

Fluid	Product	Function	Density (lb/gal)	Yield (ft ³ /sk)	Water Rq. (gal/sk)	Water Rq. (gal/bbl)	Volume (sks)	Volume (bbl)	Designed Top (ft)
1	Water	Flush	8.34			42.00		60.00	3517
2	IntegraGuard EZ II	Spacer	11.00			33.43		40.00	4144
3	Lead	Lead	12.70	2.09	11.24		880.00	327.76	4562
4	Tail	Tail	13.50	1.85	8.98		1161.00	381.82	7983
5	Displacement	DisplacementFinal	8.34			42.00		186.00	0

Job Fluid Details

Fluid	Type	Fluid	Product	Function	Conc.	Uom
2	Spacer	IntegraGuard EZ II	S-8	StrengthRetgression	169.68	lb/bbl
2	Spacer	IntegraGuard EZ II	ASA-301	Viscosifier	3.00	lb/bbl
2	Spacer	IntegraGuard EZ II	SAPP	Surfactant	10.00	lb/bbl
2	Spacer	IntegraGuard EZ II	XCem-311	Defoamer	0.50	lb/bbl
3	Lead	Lead	ASTM TYPE IL	Cement	100.00	%
3	Lead	Lead	BA-90	BondEnhancer	8.00	lb/sk
3	Lead	Lead	FL-66	FluidLoss	0.30	%BWOB
3	Lead	Lead	GW-86	Viscosifier	0.10	%BWOB
3	Lead	Lead	IntegraSeal PHENO	LostCirculation	3.00	lb/sk
3	Lead	Lead	IntegraSeal POLI	LostCirculation	0.25	lb/sk
3	Lead	Lead	R-3	Retarder	0.60	%BWOB
3	Lead	Lead	STATIC FREE	Other	0.01	lb/sk
3	Lead	Lead	XCem-311	Defoamer	0.30	%BWOB
4	Tail	Tail	BA-90	BondEnhancer	10.00	%
4	Tail	Tail	CLASS G	Cement	70.00	%
4	Tail	Tail	FLY ASH (POZZOLAN)	Extender	20.00	%
4	Tail	Tail	BENTONITE	Viscosifier	6.00	%BWOB
4	Tail	Tail	FL-24	FluidLoss	0.40	%BWOB
4	Tail	Tail	GW-86	Viscosifier	0.10	%BWOB
4	Tail	Tail	IntegraSeal PHENO	LostCirculation	3.00	lb/sk
4	Tail	Tail	R-3	Retarder	0.25	%BWOB

Fluid	Type	Fluid	Product	Function	Conc.	Uom
4	Tail	Tail	S-8	StrengthRetgression	25.00	%BWOB
4	Tail	Tail	XCem-311	Defoamer	0.30	%BWOB

Job Logs

Line	Event	Date (MM/DD/YY)	Time (HH:MM)	Density (lb/gal)	Pump Rate (bpm)	Pump Volume (bbls)	Pipe Pressure (psi)	Comment
1	Callout	1/17/2025	09:00					CREW CALLED IN TO PRETRIP AND INSPECT EQUIPMENT
2	Safety Meeting	1/17/2025	13:00					PRE-CONVOY SAFETY MEETING
3	Depart Location	1/17/2025	14:30					DEPART RCO YARD FOR CUSTOMER LOCATION
4	Arrive On Location	1/17/2025	17:00					ARRIVE ON CUSTOMER LOCATION
5	Safety Meeting	1/17/2025	17:10					WAITING TO RIG UP. PRE RIG UP SAFETY MEETING
6	Rig Up Iron	1/17/2025	18:30					RIG UP IRON AND HOSES
7	Waiting	1/17/2025	18:30					WAITING FOR RIG TO FINISH RUNNING CASING
8	Safety Meeting	1/17/2025	20:15					PRE JOB-SAFETY MEETING
9	Start Job	1/17/2025	20:55					START JOB
10	Fill Lines	1/17/2025	20:57	8.34	4	5	349	FILL LINES WITH 5 BBLs FRESH WATER
11	Pressure Test Lines	1/17/2025	21:00	8.34	1	1	5202	PRESSURE TEST LINES TO 5137 PSI
12	Pump Spacer	1/17/2025	21:11	8.34	6	60	989	PUMP 60 BBL FRESH WATER FLUSH
13	Pump Spacer	1/17/2025	21:19	11	6	40	975	START MIXING AND PUMPING 40 BBLs OF EZ SPACER. 40 BBLs PUMPED
14	Pump Lead Cement	1/17/2025	21:24	12.7	5.5	50	723	START MIXING AND PUMPING 328 BBLs (933 SKS) OF LEAD CEMENT @12.7 PPG (2.09 YLD, 11.24 GPS) VERIFIED BY MUDSCALE. 50 BBLs PUMPED
15	Pump Lead Cement	1/17/2025	21:33	12.7	5.5	50	546	100 BBLs LEAD CEMENT PUMPED. FULL RETURNS
16	Pump Lead Cement	1/17/2025	21:43	12.7	5.5	50	491	150 BBLs LEAD CEMENT PUMPED
17	Pump Lead Cement	1/17/2025	21:54	12.7	5.5	50	468	200 BBLs LEAD CEMENT PUMPED
18	Pump Lead Cement	1/17/2025	22:05	12.7	5.5	50	454	250 BBLs LEAD CEMENT PUMPED
19	Pump Lead Cement	1/17/2025	22:14	12.7	5.5	50	451	300 BBLs LEAD CEMENT PUMPED
20	Pump Lead Cement	1/17/2025	22:21	12.7	5.5	28	453	328 BBLs LEAD CEMENT PUMPED
21	Pump Tail Cement	1/17/2025	22:34	13.8	5.5	50	471	START MIXING AND PUMPING 382 BBLs (1161 SKS) TAIL CEMENT @13.5 PPG (1.85 YLD, 8.98 GPS) VERIFIED BY MUDSCALE. 50 BBLs PUMPED
22	Pump Tail Cement	1/17/2025	22:43	13.8	5.5	50	592	100 BBLs TAIL CEMENT PUMPED. FULL RETURNS
23	Pump Tail Cement	1/17/2025	22:51	13.8	5.5	50	585	150 BBLs TAIL CEMENT PUMPED
24	Pump Tail Cement	1/17/2025	23:01	13.8	5.5	50	637	200 BBLs TAIL CEMENT PUMPED

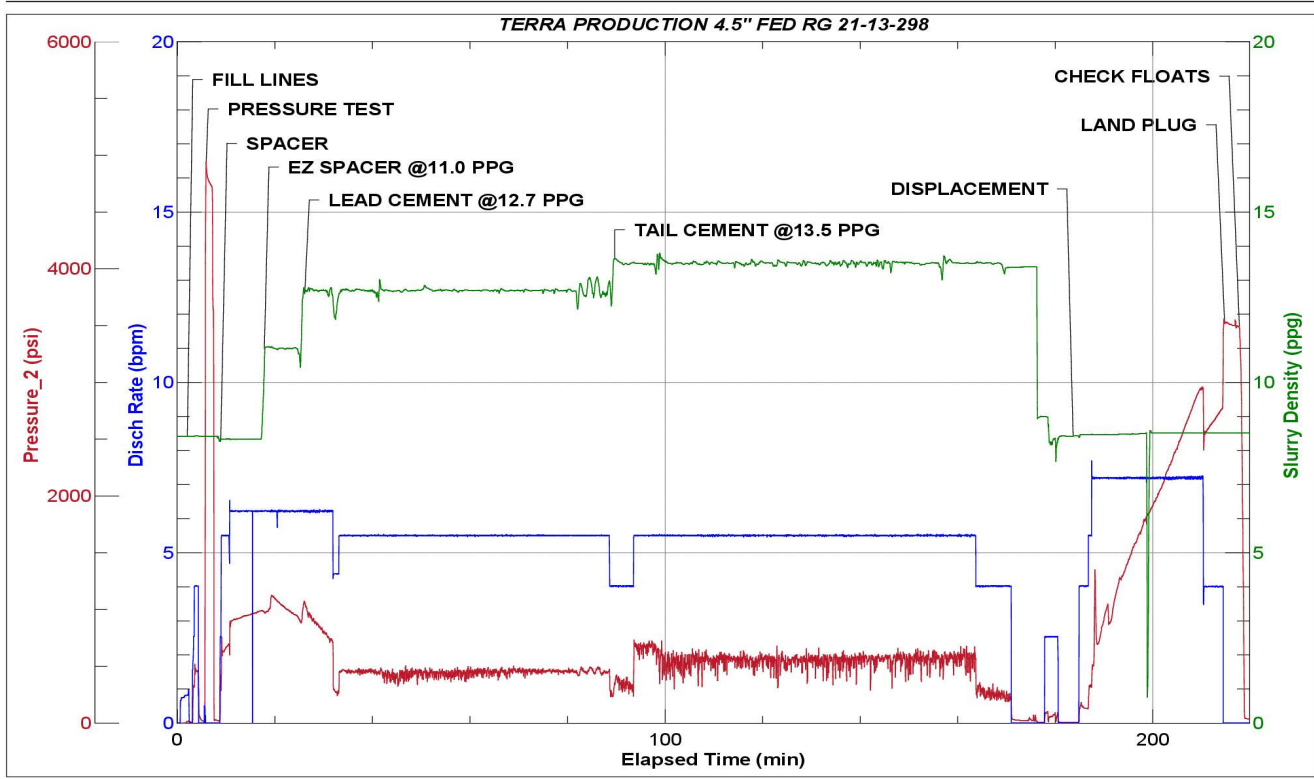


Line	Event	Date (MM/DD/YY)	Time (HH:MM)	Density (lb/gal)	Pump Rate (bpm)	Pump Volume (bbls)	Pipe Pressure (psi)	Comment
25	Pump Tail Cement	1/17/2025	23:10	13.8	5.5	50	514	250 BBLS TAIL CEMENT PUMPED
26	Pump Tail Cement	1/17/2025	23:19	13.8	5.5	50	588	300 BBLS TAIL CEMENT PUMPED
27	Pump Tail Cement	1/17/2025	23:29	13.8	5.5	50	572	350 BBLS TAIL CEMENT PUMPED
28	Pump Tail Cement	1/17/2025	23:43	13.8	3.5	32	221	382 BBLS TAIL CEMENT PUMPED
29	Shutdown	1/17/2025	23:43					SHUTDOWN. FULL RETURNS
30	Clean Pumps and Lines	1/17/2025	23:48					CLEAN PUMP AND LINES
31	Drop Top Plug	1/17/2025	23:58					DROP TOP PLUG. VERIFIED BY COMPANY MAN
32	Pump Displacement	1/18/2025	00:06	8.34	7	50	1253	START 185 BBL FRESH WATER DISPLACEMENT. 50 BBLS PUMPED
33	Pump Displacement	1/18/2025	00:13	8.34	7	50	1923	100 BBLS DISPLACEMENT PUMPED
34	Pump Displacement	1/18/2025	00:20	8.34	7	50	2663	150 BBLS DISPLACEMENT PUMPED
35	Pump Displacement	1/18/2025	00:23	8.34	7	25	2963	175 BBLS DISPLACEMENT PUMPED
36	Slow Pump Rate	1/18/2025	00:27	8.34	4	10	2415	SLOW PUMP RATE TO PREPARE TO LAND PLUG. 190 BBLS DISPLACEMENT PUMPED
37	Land Plug	1/18/2025	00:27				3560	PLUG LANDED. 2415 FCP. PLUG BUMP PRESSURE 3560 PSI
38	Check Floats	1/18/2025	00:29					UPON FLOAT CHECK 2.5 BBLS BACK. FLOATS HOLD. FULL RETURNS
39	Safety Meeting	1/18/2025	00:35					PRE-RIG DOWN SAFETY MEETING
40	Rig Down Iron	1/18/2025	01:45					RIG DOWN IRON AND HOSES
41	Safety Meeting	1/18/2025	02:15					PRE-CONVOY SAFETY MEETING
42	Depart Location	1/18/2025	02:30					DEPART CUSTOMER LOCATION FOR RCO YARD
43	End Job	1/18/2025	02:30					END JOB

Pump Diagrams



JobMaster Program Version 5.01C1
Job Number: 94302
Customer: TERRA
Well Name: FED RG 21-13-298



Job Start: Friday, January 17, 2025