



TEP ROCKY MOUNTAIN LLC SURFACE POST JOB REPORT

**FEDERAL #RG 21-13-298 05-103-12591
S:13 T:2S R:98W Rio Blanco CO**

CallSheet #: 92632
Proposal #: 78205



SURFACE Post Job Report

Attention: Mr. Dustin Childers | (936) 524-8828 | dchilders@terraep.com
Terra Energy Partners, LLC
4828 Loop Central Dr., Suite 900 | Houston, TX 77081

Dear Mr. Dustin Childers,

Thank you for the opportunity to provide cementing services on this well. American Cementing strives to achieve complete customer satisfaction. If you have any questions regarding the services or data provided, please contact American Cementing at any time.

Sincerely,

Krystal Schell

Field Engineer I | (719) 992-1830 | krystal.schell@americacementing.com

Field Office 28730 US-6, Rifle, CO 81650
Phone: (970) 657-1187

Job Details & Summary

Geometry

Type	Function	OD (in)	ID (in)	Weight (lb/ft)	Thread	Top (ft)	Bottom (ft)	Excess (%)
Casing	Outer	20	19.5	53	n/a	0	80	0
Open Hole	Outer	n/a	17.5	n/a	n/a	80	1371	30
Casing	Inner	13.375	12.615	54.5	n/a	0	1371	0

Equipment / People

Unit Type	Unit	Power Unit	Employee #1
Field Storage Silo	FSS-473		
Cement Trailer Float	CTF-340	TRC-769	Duewayne Jackson
Cement Pump Float	CPF-136	TRH-959	Jeremy Bradbrook
Light Duty Vehicles	LDV-157		Bradley Boyd
Light Duty Vehicles	LDV-146		Francisco Castillo

Timing

Event	Date/Time
ERTS	08/17/2024 00:00
Call Out	8/17/2024 02:00
Depart Facility	8/17/2024 02:30
On Location	8/17/2024 04:00
Rig Up Iron	8/17/2024 04:15
Job Started	8/17/2024 04:24
Job Completed	8/17/2024 06:22
Rig Down Iron	8/17/2024 06:25
Depart Location	8/17/2024 07:45

General Job Information

Metrics	Value
Well Fluid Density	9.1 lb/gal
Well Fluid Type	WBM
Rig Circulation Vol	420 bbls
Rig Circulation Time	0.5 hours
Calculated Displacement	206 bbls
Actual Displacement	206 bbls
Total Spacer to Surface	75 bbls
Total CMT to Surface	60 bbls
Well Topped Out	No

Job Details

Metrics	Value
Flare Prior to Job	No
Flare Prior to Job	0 units
Flare During Job	No
Flare During Job	0 units
Flare at End of Job	No
Flare at End of Job	0 units
Well Full Prior to Job	Yes
Well Fluid Density Into Well	9.1 lb/gal
Well Fluid Density Out of Well	9.1 lb/gal

Job Details (cont.)

Metrics	Value
BHCT	84 °F
BHST	102 °F

Water Analysis

Metrics	Value	Recommended
Water Source	Upright Rig Tank	
Temperature	73 °F	50-80 °F
pH Level	7	5.5-8.5
Chlorides	0 mg/L	0-3000 mg/L
Total Alkalinity	240	0-1000
Total Hardness	250 mg/L	0-500 mg/L
Carbonates	0 mg/L	0-100 mg/L
Sulfates	200 mg/L	0-1500 mg/L
Potassium	250 mg/L	0-3000 mg/L
Iron	0 mg/L	0-300 mg/L



Circulation

Lost Circulation Experienced
No

Job Execution Information

Fluid	Product	Function	Density (lb/gal)	Yield (ft ³ /sk)	Water Rq. (gal/sk)	Water Rq. (gal/bbl)	Volume (sks)	Volume (bbl)	Designed Top (ft)
1	Flush	Flush	8.34			42.00		75.00	0
2	Primary	Primary	12.30	2.31	13.17		549.00	225.79	0
3	Displacement	DisplacementFinal	8.34			42.00		206.00	0

Job Fluid Details

Fluid	Type	Fluid	Product	Function	Conc.	Uom
2	Primary	Primary	ASTM TYPE IL	Cement	100.00	%
2	Primary	Primary	A-10	Accelerator	5.00	%BWOB
2	Primary	Primary	A-2	Accelerator	3.00	lb/sk
2	Primary	Primary	A-7P	Accelerator	2.00	lb/sk
2	Primary	Primary	IntegraSeal POLI	LostCirculation	0.25	lb/sk
2	Primary	Primary	STATIC FREE	Other	0.01	lb/sk
2	Primary	Primary	XCem-311	Defoamer	0.30	%BWOB

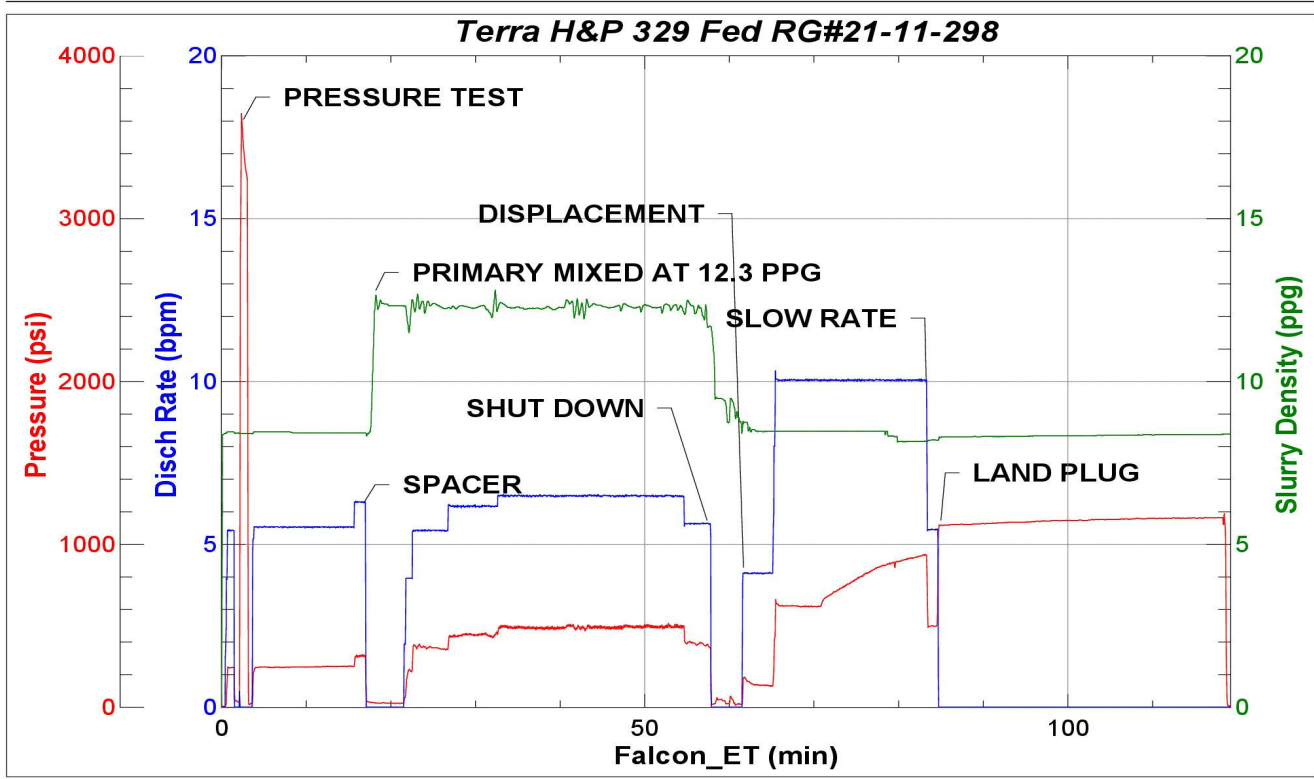
Job Logs

Line	Event	Date (MM/DD/YY)	Time (HH:MM)	Density (lb/gal)	Pump Rate (bpm)	Pump Volume (bbls)	Pipe Pressure (psi)	Comment
1	Callout	8/17/2024	02:00					On location at 4:00 AM
2	Arrive On Location	8/17/2024	02:30					Crew left yard
3	Rig Up Iron	8/17/2024	04:00					Crew on location
4	Safety Meeting	8/17/2024	04:15					Rig up meeting/rig up
5	Pressure Test Lines	8/17/2024	04:24	8.34	0.5		3000	Pressure test to 3,000psi
6	Pump Spacer	8/17/2024	04:28	8.34	7	75	245	Water spacer
7	Pump Cement	8/17/2024	04:45	12.3	7	50	432	Primary 549sks/226 at 12.3 ppg
8	Pump Cement	8/17/2024	05:00	12.3	7	50	485	100 bbls cement pumped
9	Pump Cement	8/17/2024	05:06	12.3	7	50	494	150 bbls cement pumped
10	Pump Cement	8/17/2024	05:12	12.3	7	76	506	226 bbls cement pumped
11	Shutdown	8/17/2024	05:21					Shut down drop plug
12	Pump Displacement	8/17/2024	05:26	8.34	10	50	120	Displacement water
13	Pump Displacement	8/17/2024	05:37	8.34	10	50	758	100 bbls displacement pumped
14	Pump Displacement	8/17/2024	05:43	8.34	10	50	817	150 bbls displacement pumped
15	Pump Displacement	8/17/2024	05:44	8.34	10	46	915	196 bbls displacement pumped
16	Slow Pump Rate	8/17/2024	05:45	8.34	5	10	625	Slow rate
17	Land Plug	8/17/2024	05:48	8.34	5	206	1125	Land plug, 60 bbls cement to surface
18	Test Casing	8/17/2024	05:49	8.34	0.5			Test casing
19	Check Floats	8/17/2024	06:20					Got back 1 bbl to truck
20	Rig Down Iron	8/17/2024	06:22					Rig down meeting/Rig down
21	Depart Location	8/17/2024	07:45					Crew left location

Pump Diagrams



JobMaster Program Version 5.01C1
Job Number: 92632
Customer: Terra
Well Name: FED RG 21-13-298



Job Start: Saturday, August 17, 2024