



TEP ROCKY MOUNTAIN LLC INTERMEDIATE POST JOB REPORT

**FEDERAL #RG 324-12-298 05-103-12585
S:13 T:2S R:98W Rio Blanco CO**

CallSheet #: 94069
Proposal #: 80417



INTERMEDIATE Post Job Report

Attention: Mr. Dustin Childers | (936) 524-8828 | dchilders@terraep.com

Terra Energy Partners, LLC

4828 Loop Central Dr., Suite 900 | Houston, TX 77081

Dear Mr. Dustin Childers,

Thank you for the opportunity to provide cementing services on this well. American Cementing strives to achieve complete customer satisfaction. If you have any questions regarding the services or data provided, please contact American Cementing at any time.

Sincerely,

Krystal Schell

Field Engineer I | (719) 992-1830 | krystal.schell@americacementing.com

Field Office 28730 US-6, Rifle, CO 81650
Phone: (970) 657-1187

Job Details & Summary

Geometry

| Type | Function | OD (in) | ID (in) | Weight (lb/ft) | Thread | Top (ft) | Bottom (ft) | Excess (%) |
|-----------|----------|---------|---------|----------------|--------|----------|-------------|------------|
| Casing | Outer | 13.375 | 12.615 | 54.5 | n/a | 0 | 1368 | 0 |
| Open Hole | Outer | n/a | 12.25 | n/a | n/a | 1372 | 3165 | 75 |
| Casing | Inner | 9.625 | 8.921 | 36 | n/a | 0 | 3165 | 0 |

Equipment / People

| Unit Type | Unit | Power Unit | Employee #1 |
|----------------------|---------|------------|-----------------|
| Cement Trailer Float | CTF-246 | TRC-420 | Pete Pangelinan |
| Cement Utility Float | CUF-162 | LDV-138 | Chad Johnson |
| Cement Pump Float | CPF-074 | TRH-958 | Eric Dewit |
| Light Duty Vehicles | LDV-166 | | Joshua Jones |

Timing

| Event | Date/Time |
|-----------------|------------------|
| ERTS | 12/17/2024 07:00 |
| Call Out | 12/16/2024 22:00 |
| Depart Facility | 12/17/2024 04:00 |
| On Location | 12/17/2024 06:00 |
| Rig Up Iron | 12/17/2024 06:30 |
| Job Started | 12/17/2024 11:04 |
| Job Completed | 12/17/2024 12:00 |
| Rig Down Iron | 12/17/2024 12:00 |
| Depart Location | 12/17/2024 14:00 |

General Job Information

| Metrics | Value |
|-------------------------|----------|
| Well Fluid Density | 9 lb/gal |
| Well Fluid Type | WBM |
| Rig Circulation Vol | 940 bbls |
| Rig Circulation Time | 1 hours |
| Calculated Displacement | 240 bbls |
| Actual Displacement | 240 bbls |
| Total Spacer to Surface | 0 bbls |
| Total CMT to Surface | 0 bbls |
| Well Topped Out | No |

Job Details

| Metrics | Value |
|--------------------------------|----------|
| Flare Prior to Job | No |
| Flare Prior to Job | 0 units |
| Flare During Job | No |
| Flare During Job | 0 units |
| Flare at End of Job | No |
| Flare at End of Job | 0 units |
| Well Full Prior to Job | Yes |
| Well Fluid Density Into Well | 9 lb/gal |
| Well Fluid Density Out of Well | 9 lb/gal |

Job Details (cont.)

| Metrics | Value |
|---------|--------|
| BHCT | 87 °F |
| BHST | 119 °F |

Water Analysis

| Metrics | Value | Recommended |
|------------------|------------------|-------------|
| Water Source | Upright Rig Tank | |
| Temperature | 71 °F | 50-80 °F |
| pH Level | 7 | 5.5-8.5 |
| Chlorides | 0 mg/L | 0-3000 mg/L |
| Total Alkalinity | 140 | 0-1000 |
| Total Hardness | 250 mg/L | 0-500 mg/L |
| Carbonates | 40 mg/L | 0-100 mg/L |
| Sulfates | <200 mg/L | 0-1500 mg/L |
| Potassium | 0 mg/L | 0-3000 mg/L |
| Iron | 0 mg/L | 0-300 mg/L |

Circulation

| Lost Circulation Experienced |
|------------------------------|
| No |

Job Execution Information

| Fluid | Product | Function | Density (lb/gal) | Yield (ft ³ /sk) | Water Rq. (gal/sk) | Water Rq. (gal/bbl) | Volume (sks) | Volume (bbl) | Designed Top (ft) |
|-------|---------|-------------------|------------------|-----------------------------|--------------------|---------------------|--------------|--------------|-------------------|
| 1 | Water | Flush | 8.34 | | | 42.00 | | 20.00 | 1923 |
| 2 | Lead | Lead | 12.80 | 2.03 | 11.16 | | 175.00 | 63.40 | 2128 |
| 3 | Tail | Tail | 13.50 | 1.76 | 9.10 | | 128.00 | 40.08 | 2777 |
| 4 | Water | DisplacementFinal | 8.34 | | | 42.00 | | 241.00 | 0 |

Job Fluid Details

| Fluid | Type | Fluid | Product | Function | Conc. | Uom |
|-------|------|-------|------------------|-----------------|--------|-------|
| 2 | Lead | Lead | ASTM TYPE IL | Cement | 100.00 | % |
| 2 | Lead | Lead | A-10 | Accelerator | 5.00 | %BWOB |
| 2 | Lead | Lead | A-2 | Accelerator | 2.00 | lb/sk |
| 2 | Lead | Lead | A-7P | Accelerator | 2.00 | lb/sk |
| 2 | Lead | Lead | IntegraSeal POLI | LostCirculation | 0.25 | lb/sk |
| 2 | Lead | Lead | STATIC FREE | Other | 0.01 | lb/sk |
| 2 | Lead | Lead | XCem-311 | Defoamer | 0.30 | %BWOB |
| 3 | Tail | Tail | ASTM TYPE IL | Cement | 100.00 | % |
| 3 | Tail | Tail | A-10 | Accelerator | 5.00 | %BWOB |
| 3 | Tail | Tail | A-2 | Accelerator | 2.00 | lb/sk |
| 3 | Tail | Tail | A-7P | Accelerator | 2.00 | lb/sk |
| 3 | Tail | Tail | IntegraSeal POLI | LostCirculation | 0.25 | lb/sk |
| 3 | Tail | Tail | STATIC FREE | Other | 0.01 | lb/sk |
| 3 | Tail | Tail | XCem-311 | Defoamer | 0.30 | %BWOB |

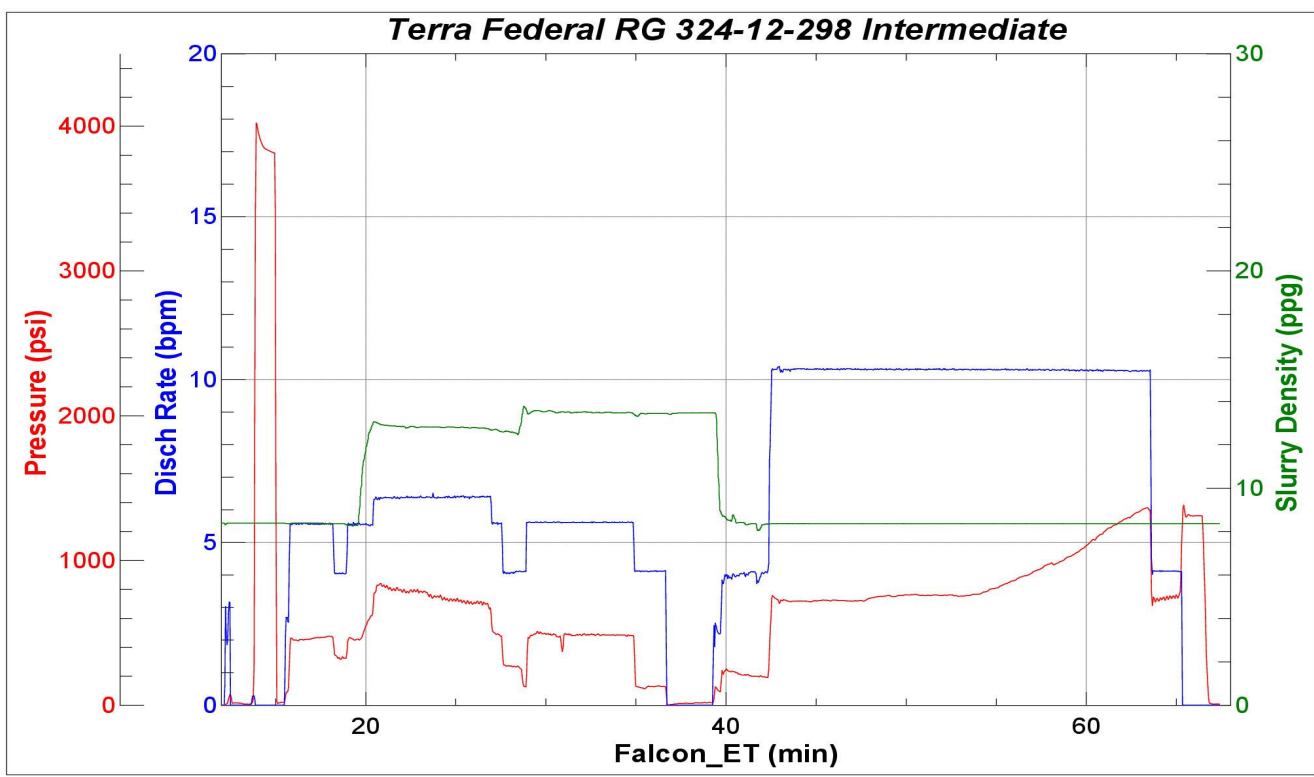
Job Logs

| Line | Event | Date (MM/DD/YY) | Time (HH:MM) | Density (lb/gal) | Pump Rate (bpm) | Pump Volume (bbls) | Pipe Pressure (psi) | Comment |
|------|---------------------|-----------------|--------------|------------------|-----------------|--------------------|---------------------|--|
| 1 | Callout | 12/16/2024 | 22:00 | | | | | Crew called out requested on location for 0700 |
| 2 | Depart For Location | 12/17/2024 | 04:00 | | | | | Crew departed for location |
| 3 | Arrive On Location | 12/17/2024 | 06:00 | | | | | Crew arrived on location |
| 4 | Safety Meeting | 12/17/2024 | 06:15 | | | | | Safety meeting |
| 5 | Rig Up Iron | 12/17/2024 | 06:30 | | | | | Spotted and rigged up all equipment |
| 6 | Waiting | 12/17/2024 | 07:30 | | | | | Waiting on rig to finish running casing and circulate the well |
| 7 | Safety Meeting | 12/17/2024 | 10:45 | | | | | Safety meeting |
| 8 | Fill Lines | 12/17/2024 | 11:04 | 8.34 | 1 | 1 | 50 | Fill lines with 1 bbls fresh water |
| 9 | Pressure Test Lines | 12/17/2024 | 11:06 | | | | | Pressure test lines to 3000 psi |
| 10 | Pump Spacer | 12/17/2024 | 11:08 | 8.34 | 5.6 | 20 | 450 | Pump 20 bbls water spacer |
| 11 | Pump Lead Cement | 12/17/2024 | 11:12 | 12.8 | 6.3 | 63 | 800 | Pump 63 bbls lead cement @ 12.8 ppg (175 sks, 2.03 Y, 9.10 gal/sk) |
| 12 | Pump Tail Cement | 12/17/2024 | 11:22 | 13.5 | 5.6 | 40 | 475 | Pump 40 bbls tail cement @ 13.5 ppg (128 sks, 1.76 Y, 9.10 gal/sk) |
| 13 | Shutdown | 12/17/2024 | 11:30 | | | | | Shutdown |
| 14 | Drop Top Plug | 12/17/2024 | 11:31 | | | | | Drop top plug |
| 15 | Pump Displacement | 12/17/2024 | 11:32 | 8.34 | 10 | 230 | 1300 | Pump 240 bbls displacement |
| 16 | Slow Pump Rate | 12/17/2024 | 11:57 | 8.34 | 4 | 10 | 750 | Slow rate to 3 bpm |
| 17 | Land Plug | 12/17/2024 | 11:58 | | | | | Land plug at 800 psi, took to 1300 psi |
| 18 | Check Floats | 12/17/2024 | 12:00 | | | | | Check floats, floats holding, bbls back |
| 19 | Safety Meeting | 12/17/2024 | 12:15 | | | | | Safety meeting |
| 20 | Rig Down Iron | 12/17/2024 | 12:30 | | | | | Rigged down all equipment |
| 21 | Depart Location | 12/17/2024 | 14:00 | | | | | Crew departed location |

Pump Diagrams



JobMaster Program Version 5.01C1
 Job Number: 94069
 Customer: Terra Energy
 Well Name: Federal RG 324-12-298



Job Start: Tuesday, December 17, 2024