



TEP ROCKY MOUNTAIN LLC LONG STRING POST JOB REPORT

**FEDERAL #RG 324-12-298 05-103-12585
S:13 T:2S R:98W Rio Blanco CO**

CallSheet #: 94070
Proposal #: 80418



LONG STRING Post Job Report

Attention: Mr. Dustin Childers | (936) 524-8828 | dchilders@terraep.com
Terra Energy Partners, LLC
4828 Loop Central Dr., Suite 900 | Houston, TX 77081

Dear Mr. Dustin Childers,

Thank you for the opportunity to provide cementing services on this well. American Cementing strives to achieve complete customer satisfaction. If you have any questions regarding the services or data provided, please contact American Cementing at any time.

Sincerely,

Krystal Schell

Field Engineer I | (719) 992-1830 | krystal.schell@americacementing.com

Field Office 28730 US-6, Rifle, CO 81650
Phone: (970) 657-1187

Job Details & Summary

Geometry

Type	Function	OD (in)	ID (in)	Weight (lb/ft)	Thread	Top (ft)	Bottom (ft)	Excess (%)
Casing	Outer	9.625	8.921	36	n/a	0	3152	0
Open Hole	Outer	n/a	8.75	n/a	n/a	3152	8321	75
Open Hole	Outer	n/a	8.75	n/a	n/a	8321	12301	75
Casing	Inner	4.5	4	11.6	n/a	0	12301	0

Equipment / People

Unit Type	Unit	Power Unit	Employee #1
Cement Trailer Float	CTF-242	TRC-090	Jeffrey Dunaway
Cement Trailer Float	CTF-246	TRC-053	Matthew Bonin
Cement Trailer Float	CTF-286	TRC-202	Daniel Balint
Field Storage Silo	FSS-473		
Field Storage Silo	FSS-792		
Light Duty Vehicles	LDV-147		Eric Brown
Cement Pump Float	CPF-053	TRH-677	Jacob Kirchenwitz

Timing

Event	Date/Time
ERTS	12/24/2024 09:00
Call Out	12/24/2024 00:00
Depart Facility	12/24/2024 05:20
On Location	12/24/2024 06:40
Rig Up Iron	12/24/2024 17:30
Job Started	12/24/2024 23:02
Job Completed	12/25/2024 02:43
Rig Down Iron	12/25/2024 03:30
Depart Location	12/25/2024 04:30

General Job Information

Metrics	Value
Well Fluid Density	9.4 lb/gal
Well Fluid Type	WBM
Rig Circulation Vol	2000 bbls
Rig Circulation Time	3 hours
Calculated Displacement	190 bbls
Actual Displacement	190 bbls
Total Spacer to Surface	0 bbls
Total CMT to Surface	0 bbls
Well Topped Out	No
Top Out Volume	N/A bbls

Job Details

Metrics	Value
Flare Prior to Job	No
Flare Prior to Job	N/A units
Flare During Job	No
Flare During Job	N/A units
Flare at End of Job	No
Flare at End of Job	N/A units
Well Full Prior to Job	Yes
Well Fluid Density Into Well	9.4 lb/gal
Well Fluid Density Out of Well	9.4 lb/gal

Job Details (cont.)

Metrics	Value
BHCT	207 °F
BHST	272 °F

Water Analysis

Metrics	Value	Recommended
Water Source	Upright Rig Tank	
Temperature	61 °F	50-80 °F
pH Level	6	5.5-8.5
Chlorides	200 mg/L	0-3000 mg/L
Total Alkalinity	100	0-1000
Total Hardness	100 mg/L	0-500 mg/L
Carbonates	10 mg/L	0-100 mg/L
Sulfates	300 mg/L	0-1500 mg/L
Potassium	200 mg/L	0-3000 mg/L
Iron	0 mg/L	0-300 mg/L

Circulation

Lost Circulation Experienced

No

Job Execution Information

Fluid	Product	Function	Density (lb/gal)	Yield (ft ³ /sk)	Water Rq. (gal/sk)	Water Rq. (gal/bbl)	Volume (sks)	Volume (bbl)	Designed Top (ft)
1	Water	Flush	8.34			42.00		60.00	3647
2	IntegraGuard EZ II	Spacer	11.00			33.43		40.00	4274
3	Lead	Lead	12.70	2.09	11.24		933.00	347.50	4692
4	Tail	Tail	13.50	1.85	8.98		1161.00	381.82	8321
5	Displacement	DisplacementFinal	8.34			42.00		190.00	0

Job Fluid Details

Fluid	Type	Fluid	Product	Function	Conc.	Uom
2	Spacer	IntegraGuard EZ II	S-8	StrengthRegression	169.68	lb/bbl
2	Spacer	IntegraGuard EZ II	ASA-301	Viscosifier	3.00	lb/bbl
2	Spacer	IntegraGuard EZ II	SAPP	Surfactant	10.00	lb/bbl
2	Spacer	IntegraGuard EZ II	XCem-311	Defoamer	0.50	lb/bbl
3	Lead	Lead	ASTM TYPE IL	Cement	100.00	%
3	Lead	Lead	BA-90	BondEnhancer	8.00	lb/sk
3	Lead	Lead	FL-66	FluidLoss	0.30	%BWOB
3	Lead	Lead	GW-86	Viscosifier	0.10	%BWOB
3	Lead	Lead	IntegraSeal PHENO	LostCirculation	3.00	lb/sk
3	Lead	Lead	IntegraSeal POLI	LostCirculation	0.25	lb/sk
3	Lead	Lead	R-3	Retarder	0.60	%BWOB
3	Lead	Lead	STATIC FREE	Other	0.01	lb/sk
3	Lead	Lead	XCem-311	Defoamer	0.30	%BWOB
4	Tail	Tail	BA-90	BondEnhancer	10.00	%
4	Tail	Tail	CLASS G	Cement	70.00	%
4	Tail	Tail	FLY ASH (POZZOLAN)	Extender	20.00	%
4	Tail	Tail	BENTONITE	Viscosifier	6.00	%BWOB
4	Tail	Tail	FL-24	FluidLoss	0.40	%BWOB
4	Tail	Tail	GW-86	Viscosifier	0.10	%BWOB
4	Tail	Tail	IntegraSeal PHENO	LostCirculation	3.00	lb/sk
4	Tail	Tail	R-3	Retarder	0.25	%BWOB
4	Tail	Tail	S-8	StrengthRegression	25.00	%BWOB
4	Tail	Tail	XCem-311	Defoamer	0.30	%BWOB

Job Logs

Line	Event	Date (MM/DD/YY)	Time (HH:MM)	Density (lb/gal)	Pump Rate (bpm)	Pump Volume (bbbls)	Pipe Pressure (psi)	Comment
1	Callout	12/24/2024	00:00					CREW CALLED IN TO PRETRIP AND INSPECT EQUIPMENT
2	Safety Meeting	12/24/2024	05:00					PRE CONVOY SAFETY MEETING
3	Depart Location	12/24/2024	05:20					DEPART RCO YARD FOR CUSTOMER LOCATION
4	Arrive On Location	12/24/2024	06:40					ARRIVE ON CUSTOMER LOCATION
5	Safety Meeting	12/24/2024	16:00					WAITING TO RIG UP. PRE RIG UP SAFETY MEETING
6	Rig Up Iron	12/24/2024	17:30					RIG UP IRON AND HOSES
7	Waiting	12/24/2024	17:30					WAITING FOR RIG TO FINISH RUNNING CASING
8	Safety Meeting	12/24/2024	22:40					PRE JOB SAFETY MEETING
9	Start Job	12/24/2024	23:02					START JOB
10	Fill Lines	12/24/2024	23:05	8.34	4	5	209	FILL LINES WITH 5 BBLS FRESH WATER
11	Pressure Test Lines	12/24/2024	23:10	8.34	1	1	5137	PRESSURE TEST LINES TO 5137 PSI
12	Pump Spacer	12/24/2024	23:13	8.34	5.5	60	917	PUMP 60 BBL FRESH WATERFLUSH
13	Pump Spacer	12/24/2024	23:35	11	5.5	40	745	START MIXING AND PUMPING 40 BBLS OF EZ SPACER. 40 BBLS PUMPED
14	Pump Lead Cement	12/24/2024	23:43	12.7	5.5	50	421	START MIXING AND PUMPING 348 BBLS (933 SKS) OF LEAD CEMENT @12.7 PPG (2.09 YLD, 11.24 GPS) VERIFIED BY MUDSCALE. 50 BBLS PUMPED
15	Pump Lead Cement	12/24/2024	23:53	12.7	5.5	50	388	100 BBLS LEAD CEMENT PUMPED. FULL RETURNS
16	Pump Lead Cement	12/25/2024	00:02	12.7	5.5	50	371	150 BBLS LEAD CEMENT PUMPED
17	Pump Lead Cement	12/25/2024	00:11	12.7	5.5	50	389	200 BBLS LEAD CEMENT PUMPED
18	Pump Lead Cement	12/25/2024	00:20	12.7	5.5	50	391	250 BBLS LEAD CEMENT PUMPED
19	Pump Lead Cement	12/25/2024	00:34	12.7	2.5	50	112	300 BBLS LEAD CEMENT PUMPED
20	Pump Lead Cement	12/25/2024	00:50	12.7	4	48	210	348 BBLS LEAD CEMENT PUMPED
21	Pump Tail Cement	12/25/2024	01:02	13.8	5.5	50	484	START MIXING AND PUMPING 382 BBLS (1161 SKS) TAIL CEMENT @13.5 PPG (1.85 YLD, 8.98 GPS) VERIFIED BY MUDSCALE. 50 BBLS PUMPED
22	Pump Tail Cement	12/25/2024	01:12	13.8	5.5	50	481	100 BBLS TAIL CEMENT PUMPED. FULL RETURNS
23	Pump Tail Cement	12/25/2024	01:19	13.8	7.5	50	798	150 BBLS TAIL CEMENT PUMPED
24	Pump Tail Cement	12/25/2024	01:28	13.8	7.5	50	780	200 BBLS TAIL CEMENT PUMPED
25	Pump Tail Cement	12/25/2024	01:35	13.8	5.5	50	470	250 BBLS TAIL CEMENT PUMPED
26	Pump Tail Cement	12/25/2024	01:44	13.8	5.5	50	460	300 BBLS TAIL CEMENT PUMPED

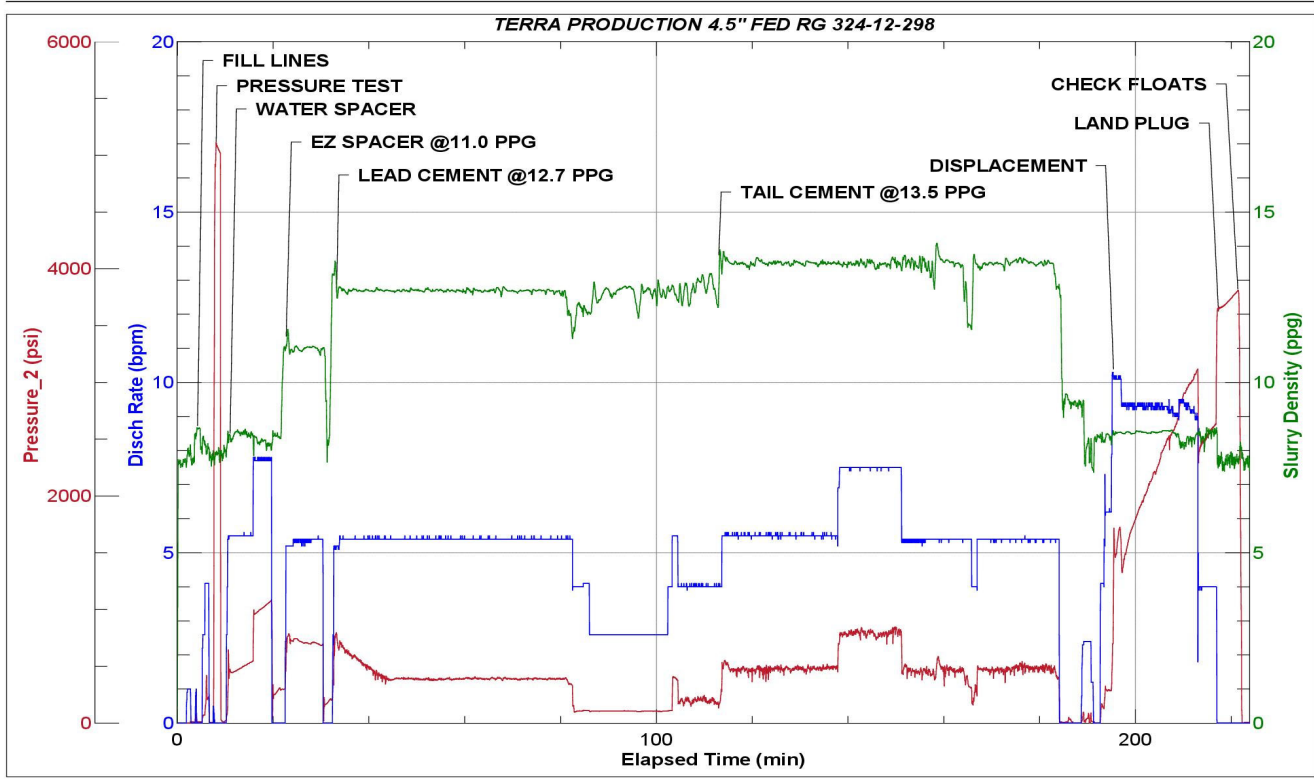


Line	Event	Date (MM/DD/YY)	Time (HH:MM)	Density (lb/gal)	Pump Rate (bpm)	Pump Volume (bbls)	Pipe Pressure (psi)	Comment
27	Pump Tail Cement	12/25/2024	01:54	13.8	5.5	50	473	350 BBLS TAIL CEMENT PUMPED
28	Pump Tail Cement	12/25/2024	02:02	13.8	5.5	32	475	382 BBLS TAIL CEMENT PUMPED
29	Shutdown	12/25/2024	02:02					SHUTDOWN. FULL RETURNS
30	Clean Pumps and Lines	12/25/2024	02:06					CLEAN PUMP AND LINES
31	Drop Top Plug	12/25/2024	02:10					DROP TOP PLUG. VERIFIED BY COMPANY MAN
32	Pump Displacement	12/25/2024	02:09	8.34	9.3	50	1723	START 190 BBL FRESH WATER DISPLACEMENT. 50 BBLS PUMPED
33	Pump Displacement	12/25/2024	02:24	8.34	9.3	50	2411	100 BBLS DISPLACEMENT PUMPED
34	Pump Displacement	12/25/2024	02:30	8.34	9.3	50	2922	150 BBLS DISPLACEMENT PUMPED
35	Pump Displacement	12/25/2024	02:33	8.34	9.3	30	3092	180 BBLS DISPLACEMENT PUMPED
36	Slow Pump Rate	12/25/2024	02:37	8.34	4	10	2689	SLOW PUMP RATE TO PREPARE TO LAND PLUG. 190 BBLS DISPLACEMENT PUMPED
37	Land Plug	12/25/2024	02:37				3775	PLUG LANDED. 2689 FCP. 3775 PLUG BUMP PRESSURE
38	Check Floats	12/25/2024	02:43					UPON FLOAT CHECK 2.5 BBLS BACK. FLOATS HOLD. FULL RETURNS
39	Safety Meeting	12/25/2024	02:50					PRE RIG DOWN SAFETY MEETING
40	Rig Down Iron	12/25/2024	03:30					RIG DOWN IRON AND HOSES
41	Safety Meeting	12/25/2024	04:00					PRE CONVOY SAFETY MEETING
42	Depart Location	12/25/2024	04:30					DEPART CUSTOMER LOCATION FOR RCO YARD
43	End Job	12/25/2024	04:30					END JOB

Pump Diagrams



JobMaster Program Version 5.01C1
Job Number: 94070
Customer: TERRA
Well Name: FED RG 324-12-298



Job Start: Tuesday, December 24, 2024