



---

# TEP ROCKY MOUNTAIN LLC SURFACE POST JOB REPORT

FEDERAL #RG 324-12-298 05-103-12585  
S:13 T:2S R:98W Rio Blanco CO

CallSheet #: 92589  
Proposal #: 78129



**SURFACE Post Job Report**

**Attention:** Mr. Dustin Childers | (936) 524-8828 | dchilders@terraep.com

Terra Energy Partners, LLC

4828 Loop Central Dr., Suite 900 | Houston, TX 77081

---

Dear Mr. Dustin Childers,

Thank you for the opportunity to provide cementing services on this well. American Cementing strives to achieve complete customer satisfaction. If you have any questions regarding the services or data provided, please contact American Cementing at any time.

Sincerely,

**Addison Kneale**

Field Engineer I | (904) 228-9560 | addison.kneale@americacementing.com

**Field Office**      28730 US-6, Rifle, CO 81650  
Phone: (970) 657-1187

## Job Details & Summary

### Geometry

Type	Function	OD (in)	ID (in)	Weight (lb/ft)	Thread	Top (ft)	Bottom (ft)	Excess (%)
Casing	Outer	20	19.5	53	n/a	0	80	0
Open Hole	Outer	n/a	17.5	n/a	n/a	80	1368	30
Casing	Inner	13.375	12.615	54.5	n/a	0	1368	0

### Equipment / People

Unit Type	Unit	Power Unit	Employee #1
Field Storage Silo	FSS-470		
Cement Trailer Float	CTF-182	TRC-769	Duewayne Jackson
Cement Pump Float	CPF-136	TRH-959	Francisco Castillo
Cement Pump Float	CPF-058	TRH-677	Jeremy Bradbrook
Light Duty Vehicles	LDV-157		Bradley Boyd

### Timing

Event	Date/Time
ERTS	08/13/2024 21:00
Call Out	8/13/2024 17:00
Depart Facility	8/13/2024 19:00
On Location	8/13/2024 21:00
Rig Up Iron	8/13/2024 21:30
Job Started	8/14/2024 05:51
Job Completed	8/14/2024 08:08
Rig Down Iron	8/14/2024 08:10
Depart Location	8/14/2024 09:00

### General Job Information

Metrics	Value
Well Fluid Density	9.05 lb/gal
Well Fluid Type	WBM
Rig Circulation Vol	420 bbls
Rig Circulation Time	0.5 hours
Calculated Displacement	206 bbls
Actual Displacement	206 bbls
Total Spacer to Surface	75 bbls
Total CMT to Surface	36 bbls
Well Topped Out	No

### Job Details

Metrics	Value
Well Full Prior to Job	Yes
Well Fluid Density Into Well	9.1 lb/gal
Well Fluid Density Out of Well	9.1 lb/gal

### Job Details (cont.)

Metrics	Value
BHCT	84 °F
BHST	102 °F

### Water Analysis

Metrics	Value	Recommended
Water Source	None	
Temperature	73 °F	50-80 °F
pH Level	7	5.5-8.5
Chlorides	0 mg/L	0-3000 mg/L
Total Alkalinity	240	0-1000
Total Hardness	250 mg/L	0-500 mg/L
Carbonates	0 mg/L	0-100 mg/L
Sulfates	200 mg/L	0-1500 mg/L
Potassium	250 mg/L	0-3000 mg/L
Iron	0 mg/L	0-300 mg/L

### Circulation

Lost Circulation Experienced
No



### Job Execution Information

Fluid	Product	Function	Density (lb/gal)	Yield (ft <sup>3</sup> /sk)	Water Rq. (gal/sk)	Water Rq. (gal/bbl)	Volume (sks)	Volume (bbl)	Designed Top (ft)
1	Flush	Flush	8.34			42.00		20.00	0
2	Primary	Primary	12.30	2.31	13.17		556.00	228.66	0
3	Displacement	DisplacementFinal	8.34			42.00		206.00	0

### Job Fluid Details

Fluid	Type	Fluid	Product	Function	Conc.	Uom
2	Primary	Primary	ASTM TYPE IL	Cement	100.00	%
2	Primary	Primary	A-10	Accelerator	5.00	%BWOB
2	Primary	Primary	A-2	Accelerator	3.00	lb/sk
2	Primary	Primary	A-7P	Accelerator	2.00	lb/sk
2	Primary	Primary	IntegraSeal POLI	LostCirculation	0.25	lb/sk
2	Primary	Primary	STATIC FREE	Other	0.01	lb/sk
2	Primary	Primary	XCem-311	Defoamer	0.30	%BWOB

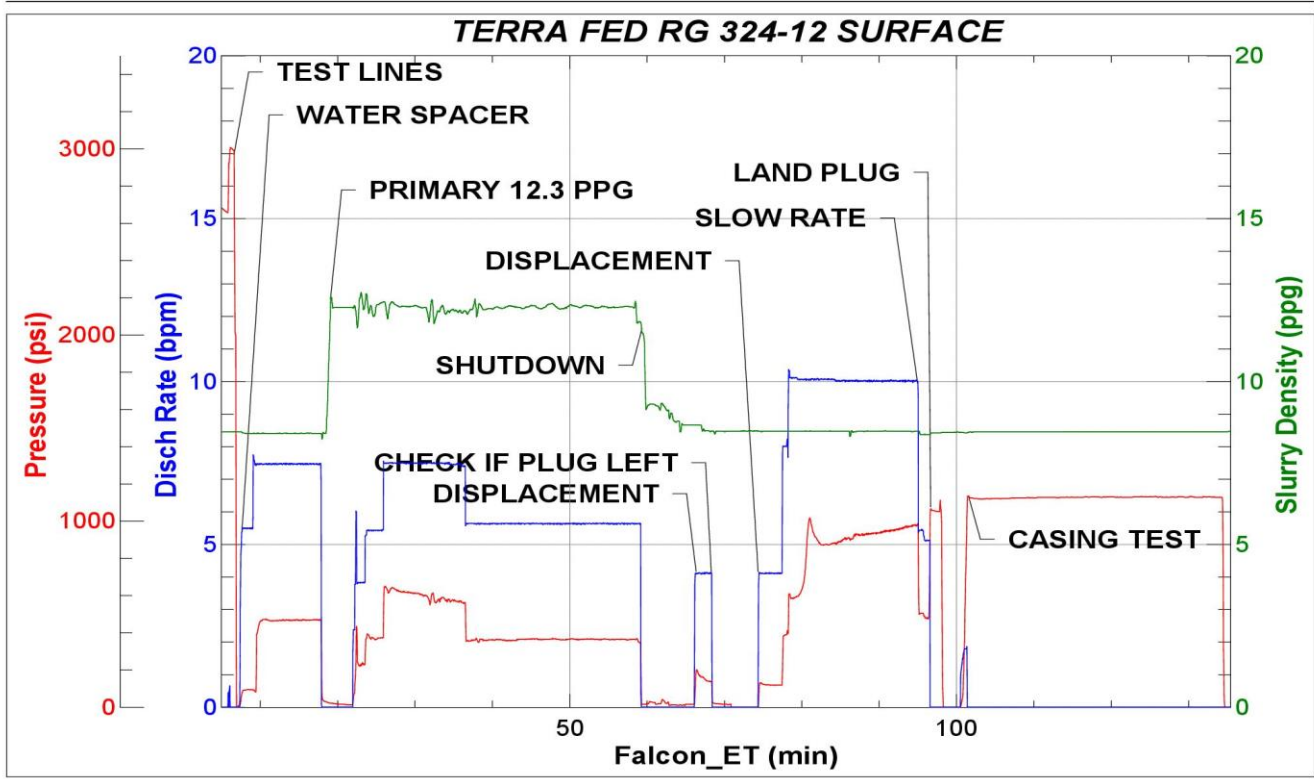
## Job Logs

Line	Event	Date (MM/DD/YY)	Time (HH:MM)	Density (lb/gal)	Pump Rate (bpm)	Pump Volume (bbls)	Pipe Pressure (psi)	Comment
1	Callout	8/13/2024	17:00					On location at 21:00 hrs
2	Depart Location	8/13/2024	19:00					Crew left the yard
3	Arrive On Location	8/13/2024	21:00					Crew on location
4	Rig Up Iron	8/13/2024	21:30					Rig up meeting, rig up
5	Safety Meeting	8/14/2024	05:51					Pre-job safety meeting
6	Pressure Test Lines	8/14/2024	05:54				3000	Pressure test lines
7	Pump Spacer	8/14/2024	05:58	8.34	7.5	75	770	Water spacer
8	Pump Cement	8/14/2024	06:09	12.3	5.5	50	350	Primary 556 sks/229 bbls at 12.3 ppg
9	Pump Cement	8/14/2024	06:12	12.3	5.5	50	350	100 bbls cement pumped
10	Pump Cement	8/14/2024	06:36	12.3	5.5	50	350	150 bbls cement pumped
11	Pump Cement	8/14/2024	06:49	12.3	5.5	79	320	220 bbls cement pumped
12	Shutdown	8/14/2024	06:59				0	Shutdown, drop plug
13	Pump Displacement	8/14/2024	07:06	8.34	10	50	953	Displacement water
14	Pump Displacement	8/14/2024	07:16	8.34	10	50	950	100 bbls displacement pumped
15	Pump Displacement	8/14/2024	07:20	8.34	10	50	950	150 bbls displacement pumped
16	Pump Displacement	8/14/2024	07:23	8.34	10	44	960	194 bbls displacement pumped
17	Slow Pump Rate	8/14/2024	07:27	8.34	5	10	475	slow rate
18	Land Plug	8/14/2024	07:28				206	Land plug, 36 bbls cement to surface
19	Check Floats	8/14/2024	07:29					Floats held, 1.25 bbls flow back
20	Test Casing	8/14/2024	07:30	8.34			1120	Pressure test casing 1120 psi
21	Check Floats	8/14/2024	08:05				1129	Release pressure, was at 1129 psi
22	Rig Down Iron	8/14/2024	08:08					Rig down meeting, rig down
23	Depart Location	8/14/2024	09:00					Crew depart location

# Pump Diagrams



JobMaster Program Version 5.01C1  
Job Number: 92589  
Customer: TERRA  
Well Name: FED RG 324-12



Job Start: Wednesday, August 14, 2024