



TEP ROCKY MOUNTAIN LLC INTERMEDIATE POST JOB REPORT

**FEDERAL #RG 24-12-298 05-103-12588
S:13 T:2S R:98W Rio Blanco CO**

CallSheet #: 93932
Proposal #: 80243



INTERMEDIATE Post Job Report

Attention: Mr. Dustin Childers | (936) 524-8828 | dchilders@terraep.com
Terra Energy Partners, LLC
4828 Loop Central Dr., Suite 900 | Houston, TX 77081

Dear Mr. Dustin Childers,

Thank you for the opportunity to provide cementing services on this well. American Cementing strives to achieve complete customer satisfaction. If you have any questions regarding the services or data provided, please contact American Cementing at any time.

Sincerely,

Krystal Schell

Field Engineer I | (719) 992-1830 | krystal.schell@americacementing.com

Field Office 28730 US-6, Rifle, CO 81650
Phone: (970) 657-1187

Job Details & Summary

Geometry

Type	Function	OD (in)	ID (in)	Weight (lb/ft)	Thread	Top (ft)	Bottom (ft)	Excess (%)
Casing	Outer	13.375	12.615	54.5	n/a	0	1340	0
Open Hole	Outer	n/a	12.25	n/a	n/a	1340	3192	75
Casing	Inner	9.625	8.921	36	n/a	0	3192	0

Equipment / People

Unit Type	Unit	Power Unit	Employee #1
Cement Trailer Float	CTF-161	TRC-769	Jacob Kirchenwitz
Light Duty Vehicles	LDV-147		Eric Brown
Cement Pump Float	CPF-053	TRH-677	Ivan Gonzales

Timing

Event	Date/Time
ERTS	12/09/2024 08:30
Call Out	12/9/2024 01:30
Depart Facility	12/9/2024 07:00
On Location	12/9/2024 08:30
Rig Up Iron	12/9/2024 09:30
Job Started	12/9/2024 10:53
Job Completed	12/9/2024 11:58
Rig Down Iron	12/9/2024 13:00
Depart Location	12/9/2024 13:30

General Job Information

Metrics	Value
Well Fluid Density	9 lb/gal
Well Fluid Type	WBM
Rig Circulation Vol	1000 bbls
Rig Circulation Time	1 hours
Calculated Displacement	243 bbls
Actual Displacement	243 bbls
Total Spacer to Surface	0 bbls
Total CMT to Surface	0 bbls
Well Topped Out	No
Top Out Volume	N/A bbls

Job Details

Metrics	Value
Flare Prior to Job	No
Flare Prior to Job	N/A units
Flare During Job	No
Flare During Job	N/A units
Flare at End of Job	No
Flare at End of Job	N/A units
Well Full Prior to Job	Yes
Well Fluid Density Into Well	9 lb/gal
Well Fluid Density Out of Well	9 lb/gal

Job Details (cont.)

Metrics	Value
BHCT	86 °F
BHST	117 °F

Water Analysis

Metrics	Value	Recommended
Water Source	Upright Rig Tank	
Temperature	57 °F	50-80 °F
pH Level	6	5.5-8.5
Chlorides	200 mg/L	0-3000 mg/L
Total Alkalinity	100	0-1000
Total Hardness	50 mg/L	0-500 mg/L
Carbonates	10 mg/L	0-100 mg/L
Sulfates	100 mg/L	0-1500 mg/L
Potassium	200 mg/L	0-3000 mg/L
Iron	0 mg/L	0-300 mg/L

Circulation

Lost Circulation Experienced

No

Job Execution Information

Fluid	Product	Function	Density (lb/gal)	Yield (ft ³ /sk)	Water Rq. (gal/sk)	Water Rq. (gal/bbl)	Volume (sks)	Volume (bbl)	Designed Top (ft)
1	Water	Flush	8.34			42.00		20.00	1950
2	Lead	Lead	12.80	2.03	11.16		179.00	64.85	2155
3	Tail	Tail	13.50	1.76	9.10		128.00	40.08	2817
4	Water	DisplacementFinal	8.34			42.00		243.00	0

Job Fluid Details

Fluid	Type	Fluid	Product	Function	Conc.	Uom
2	Lead	Lead	ASTM TYPE IL	Cement	100.00	%
2	Lead	Lead	A-10	Accelerator	5.00	%BWOB
2	Lead	Lead	A-2	Accelerator	2.00	lb/sk
2	Lead	Lead	A-7P	Accelerator	2.00	lb/sk
2	Lead	Lead	IntegraSeal POLI	LostCirculation	0.25	lb/sk
2	Lead	Lead	STATIC FREE	Other	0.01	lb/sk
2	Lead	Lead	XCem-311	Defoamer	0.30	%BWOB
3	Tail	Tail	ASTM TYPE IL	Cement	100.00	%
3	Tail	Tail	A-10	Accelerator	5.00	%BWOB
3	Tail	Tail	A-2	Accelerator	2.00	lb/sk
3	Tail	Tail	A-7P	Accelerator	2.00	lb/sk
3	Tail	Tail	IntegraSeal POLI	LostCirculation	0.25	lb/sk
3	Tail	Tail	STATIC FREE	Other	0.01	lb/sk
3	Tail	Tail	XCem-311	Defoamer	0.30	%BWOB

Job Logs

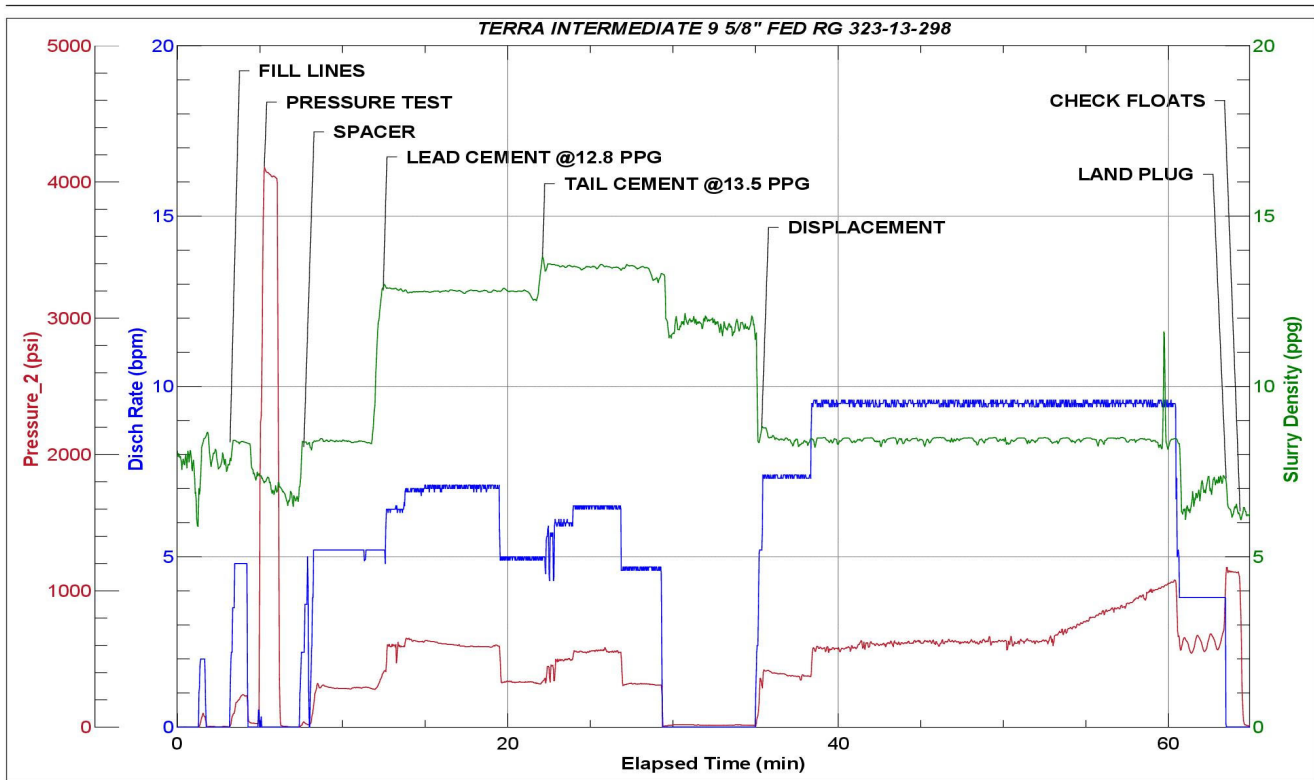
Line	Event	Date (MM/DD/YY)	Time (HH:MM)	Density (lb/gal)	Pump Rate (bpm)	Pump Volume (bbls)	Pipe Pressure (psi)	Comment
1	Callout	12/9/2024	01:30					CREW CALLED IN TO PRETRIP AND INSPECT EQUIPMENT
2	Safety Meeting	12/9/2024	06:45					PRE-CONVOY SAFETY MEETING
3	Depart Location	12/9/2024	07:00					DEPART RCO YARD FOR CUSTOMER LOCATION
4	Arrive On Location	12/9/2024	08:30					ARRIVE ON CUSTOMER LOCATION
5	Safety Meeting	12/9/2024	08:40					PRE-RIG UP SAFETY MEETING
6	Rig Up Iron	12/9/2024	09:30					RIG UP IRON AND HOSES REQ. FOR JOB
7	Waiting	12/9/2024	09:30					WAITING FOR RIG TO FINISH RUNNING CASING
8	Safety Meeting	12/9/2024	10:20					PRE JOB-SAFETY MEETING WITH RIG CREW AND COMPANY MAN
9	Start Job	12/9/2024	10:53					START JOB
10	Fill Lines	12/9/2024	10:53	8.34	5	5	193	FILL LINES WITH 5 BBLS OF FRESH WATER
11	Pressure Test Lines	12/9/2024	10:57	8.34	1	1	4079	PRESSURE TEST LINES TO 4079 PSI
12	Pump Spacer	12/9/2024	11:01	8.34	5	20	265	PUMP 20 BBLS OF FRESH WATER SPACER
13	Pump Lead Cement	12/9/2024	11:09	12.8	7	30	605	START MIXING AND PUMPING 65 BBLS (179 SKS) OF LEAD CEMENT @12.8 PPG (2.03 YLD, 11.16 GPS) VERIFIED WITH MUDSCALE. 30 BBLS PUMPED
14	Pump Lead Cement	12/9/2024	11:15	12.8	5	35	332	65 BBLS OF LEAD CEMENT PUMPED
15	Pump Tail Cement	12/9/2024	11:19	13.5	5	20	346	START MIXING AND PUMPING 40 BBLS (128 SKS) OF TAIL CEMENT @13.5 PPG (1.76 YLD, 9.10 GPS) VERIFIED BY MUDSCALE. 20 BBLS PUMPED
16	Pump Tail Cement	12/9/2024	11:23	13.5	4	20	132	40 BBLS TAIL CEMENT PUMPED
17	Shutdown	12/9/2024	11:23					SHUTDOWN. FULL RETURNS DURING CEMENT CLEAN PUMP
18	Clean Pumps and Lines	12/9/2024	11:26					CLEAN PUMP
19	Drop Top Plug	12/9/2024	11:29					DROP TOP PLUG
20	Pump Displacement	12/9/2024	11:35	8.34	7	50	578	START PUMPING 243 BBL FRESH WATER DISPLACEMENT. 50 BBLS PUMPED
21	Pump Displacement	12/9/2024	11:40	8.34	9.5	50	625	100 BBLS DISPLACEMENT PUMPED
22	Pump Displacement	12/9/2024	11:45	8.34	9.5	50	628	150 BBLS DISPLACEMENT PUMPED
23	Pump Displacement	12/9/2024	11:51	8.34	9.5	50	909	200 BBLS DISPLACEMENT PUMPED
24	Pump Displacement	12/9/2024	11:54	8.34	9.5	30	1086	230 BBLS DISPLACEMENT PUMPED
25	Slow Pump Rate	12/9/2024	11:56	8.34	4	13	734	SLOW RATE TO PREPARE TO LAND PLUG. 243 BBLS PUMPED
26	Land Plug	12/9/2024	11:56				1203	PLUG LANDED. 734 FCP. PLUG BUMP PRESSURE 1203 PSI.
27	Check Floats	12/9/2024	11:58					UPON FLOAT CHECK 1 BBL BACK
28	Safety Meeting	12/9/2024	12:10					PRE-RIG DOWN SAFETY MEETING
29	Rig Down Iron	12/9/2024	13:00					RIG DOWN IRON AND HOSES
30	Safety Meeting	12/9/2024	13:20					PRE-CONVOY SAFETY MEETING

Line	Event	Date (MM/DD/YY)	Time (HH:MM)	Density (lb/gal)	Pump Rate (bpm)	Pump Volume (bbls)	Pipe Pressure (psi)	Comment
31	Depart Location	12/9/2024	13:30					DEPART CUSTOMER LOCATION FOR RCO YARD
32	End Job	12/9/2024	13:30					END JOB

Pump Diagrams



JobMaster Program Version 5.01C1
Job Number: 93932
Customer: TERRA
Well Name: FED RG 323-13-298



Job Start: Monday, December 09, 2024