



---

# TEP ROCKY MOUNTAIN LLC LONG STRING POST JOB REPORT

FEDERAL #RG 24-12-298 05-103-12588  
S:13 T:2S R:98W Rio Blanco CO

CallSheet #: 93933  
Proposal #: 80244



**LONG STRING Post Job Report**

**Attention:** Mr. Dustin Childers | (936) 524-8828 | dchilders@terraep.com  
Terra Energy Partners, LLC  
4828 Loop Central Dr., Suite 900 | Houston, TX 77081

---

Dear Mr. Dustin Childers,

Thank you for the opportunity to provide cementing services on this well. American Cementing strives to achieve complete customer satisfaction. If you have any questions regarding the services or data provided, please contact American Cementing at any time.

Sincerely,

**Addison Kneale**

Field Engineer I | (904) 228-9560 | addison.kneale@americacementing.com

**Field Office**      28730 US-6, Rifle, CO 81650  
Phone: (970) 657-1187

## Job Details & Summary

### Geometry

Type	Function	OD (in)	ID (in)	Weight (lb/ft)	Thread	Top (ft)	Bottom (ft)	Excess (%)
Casing	Outer	9.625	8.921	36	n/a	0	3187	0
Open Hole	Outer	n/a	8.75	n/a	n/a	3187	8478	75
Open Hole	Outer	n/a	8.75	n/a	n/a	8478	12448	75
Casing	Inner	4.5	4	11.6	n/a	0	12448	0

### Equipment / People

Unit Type	Unit	Power Unit	Employee #1
Cement Trailer Float	CTF-249	TRC-053	Matthew Pinkney
Cement Trailer Float	CTF-522	TRC-054	Michael Hutchinson
Cement Trailer Float	CTF-385	TRC-769	Dalton Woodall
Field Storage Silo	FSS-792		
Field Storage Silo	FSS-473		
Light Duty Vehicles	LDV-167		Gerron McClure
Cement Pump Float	CPF-052	TRH-959	James Lujan

### Timing

Event	Date/Time
ERTS	12/15/2024 16:00
Call Out	12/15/2024 06:30
Depart Facility	12/15/2024 10:30
On Location	12/15/2024 16:00
Rig Up Iron	12/15/2024 16:20
Job Started	12/15/2024 18:48
Job Completed	12/15/2024 21:54
Rig Down Iron	12/15/2024 22:30
Depart Location	12/15/2024 23:00

### General Job Information

Metrics	Value
Well Fluid Density	9.9 lb/gal
Well Fluid Type	WBM
Rig Circulation Vol	822 bbls
Rig Circulation Time	2 hours
Calculated Displacement	192 bbls
Actual Displacement	192 bbls
Total Spacer to Surface	0 bbls
Total CMT to Surface	0 bbls
Well Topped Out	No
Top Out Volume	N/A bbls

### Job Details

Metrics	Value
Well Full Prior to Job	Yes
Well Fluid Density Into Well	9.9 lb/gal
Well Fluid Density Out of Well	9.9 lb/gal

### Job Details (cont.)

Metrics	Value
BHCT	203 °F
BHST	267 °F

### Water Analysis

Metrics	Value	Recommended
Water Source	None	
Temperature	68 °F	50-80 °F
pH Level	7	5.5-8.5
Chlorides	100 mg/L	0-3000 mg/L
Total Alkalinity	10	0-1000
Total Hardness	10 mg/L	0-500 mg/L
Carbonates	10 mg/L	0-100 mg/L
Sulfates	100 mg/L	0-1500 mg/L
Potassium	100 mg/L	0-3000 mg/L
Iron	10 mg/L	0-300 mg/L

### Circulation

Lost Circulation Experienced
No

### Job Execution Information

Fluid	Product	Function	Density (lb/gal)	Yield (ft <sup>3</sup> /sk)	Water Rq. (gal/sk)	Water Rq. (gal/bbl)	Volume (sks)	Volume (bbl)	Designed Top (ft)
1	Water	Flush	8.34			42.00		60.00	3711
2	IntegraGuard EZ II	Spacer	11.00			33.43		40.00	4338
3	Lead	Lead	12.70	2.09	11.24		957.00	356.44	4756
4	Tail	Tail	13.50	1.85	8.98		1161.00	381.82	8478
5	Displacement	DisplacementFinal	8.34			42.00		192.00	0

### Job Fluid Details

Fluid	Type	Fluid	Product	Function	Conc.	Uom
2	Spacer	IntegraGuard EZ II	S-8	StrengthRetrogression	169.68	lb/bbl
2	Spacer	IntegraGuard EZ II	ASA-301	Viscosifier	3.00	lb/bbl
2	Spacer	IntegraGuard EZ II	SAPP	Surfactant	10.00	lb/bbl
2	Spacer	IntegraGuard EZ II	XCem-311	Defoamer	0.50	lb/bbl
3	Lead	Lead	ASTM TYPE II	Cement	100.00	%
3	Lead	Lead	BA-90	BondEnhancer	8.00	lb/sk
3	Lead	Lead	FL-66	FluidLoss	0.30	%BWOB
3	Lead	Lead	GW-86	Viscosifier	0.10	%BWOB
3	Lead	Lead	IntegraSeal PHENO	LostCirculation	3.00	lb/sk
3	Lead	Lead	IntegraSeal POLI	LostCirculation	0.25	lb/sk
3	Lead	Lead	R-3	Retarder	0.60	%BWOB
3	Lead	Lead	STATIC FREE	Other	0.01	lb/sk
3	Lead	Lead	XCem-311	Defoamer	0.30	%BWOB
4	Tail	Tail	BA-90	BondEnhancer	10.00	%
4	Tail	Tail	CLASS G	Cement	70.00	%
4	Tail	Tail	FLY ASH (POZZOLAN)	Extender	20.00	%
4	Tail	Tail	BENTONITE	Viscosifier	6.00	%BWOB
4	Tail	Tail	FL-24	FluidLoss	0.40	%BWOB
4	Tail	Tail	GW-86	Viscosifier	0.10	%BWOB
4	Tail	Tail	IntegraSeal PHENO	LostCirculation	3.00	lb/sk
4	Tail	Tail	R-3	Retarder	0.25	%BWOB
4	Tail	Tail	S-8	StrengthRetrogression	25.00	%BWOB
4	Tail	Tail	XCem-311	Defoamer	0.30	%BWOB

## Job Logs

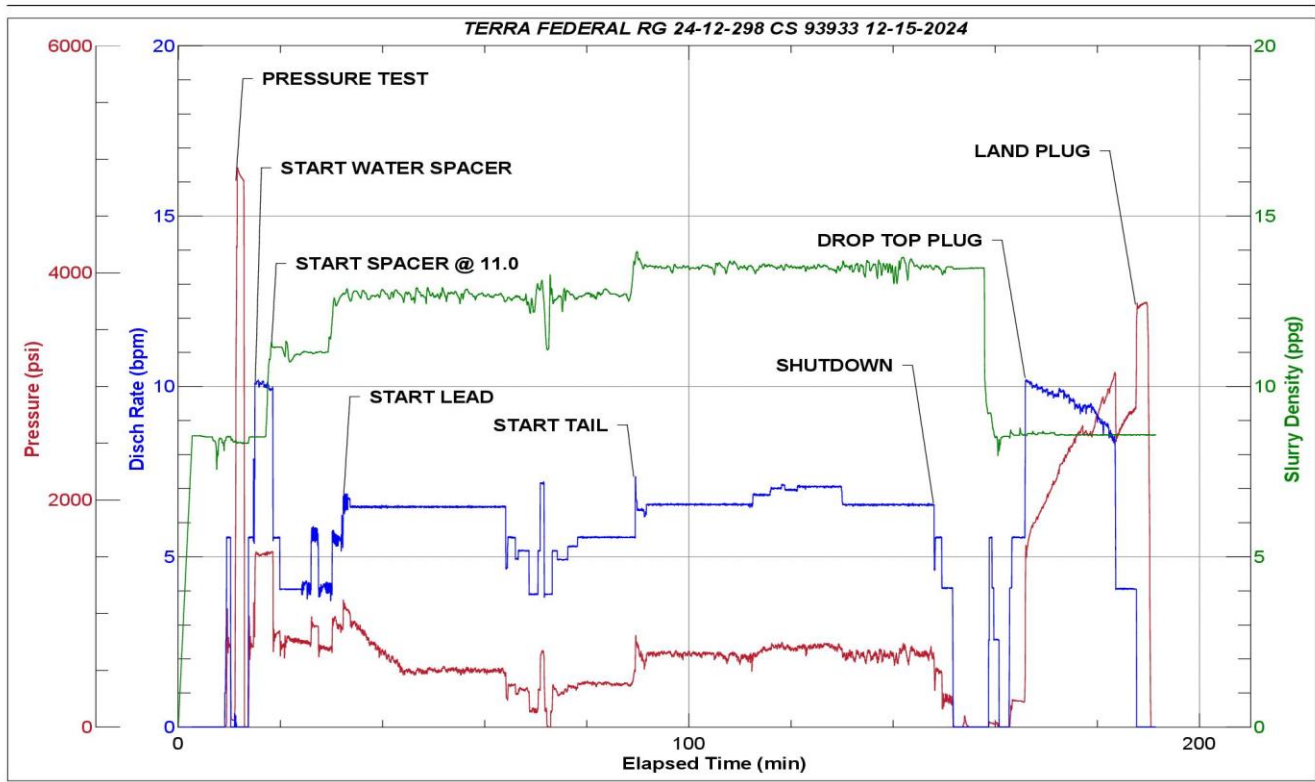
Line	Event	Date (MM/DD/YY)	Time (HH:MM)	Density (lb/gal)	Pump Rate (bpm)	Pump Volume (bbls)	Pipe Pressure (psi)	Comment
1	Callout	12/15/2024	06:30					
2	Arrive On Location	12/15/2024	16:00					ARRIVE ON LOCATION @ 16:00 PER CUSTOMER REQUEST
3	Safety Meeting	12/15/2024	16:05					
4	Spot equipment	12/15/2024	16:10					
5	Safety Meeting	12/15/2024	16:15					PRE RIG UP SAFETY MEETING
6	Rig Up Iron	12/15/2024	16:20					
7	Waiting	12/15/2024	16:30					
8	Safety Meeting	12/15/2024	18:23					
9	Start Job	12/15/2024	18:48					
10	Pressure Test Lines	12/15/2024	18:50					
11	Pump Spacer	12/15/2024	18:53	8.34	5.5	1	619	PUMP 60 BBLS FRESH WATER SPACER
12	Pump Spacer	12/15/2024	18:59	8.34	5.5	60	642	
13	Pump Spacer	12/15/2024	18:59	11	4	1	765	PUMP 40 BBLS INTEGRAGUARD SPACER @ 11.0 PPG
14	Pump Spacer	12/15/2024	19:09	11	4	40	745	
15	Pump Lead Cement	12/15/2024	19:09	12.7	5.5	1	960	START LEAD SLURRY @ 12.7 PPG (2.09,11.24) 957 SKS
16	Pump Lead Cement	12/15/2024	19:17	12.7	6.5	50	740	50 GONE
17	Pump Lead Cement	12/15/2024	19:25	12.7	6.5	100	506	100 GONE
18	Pump Lead Cement	12/15/2024	19:32	12.7	6.5	150	500	150 GONE
19	Pump Lead Cement	12/15/2024	19:40	12.7	6.5	200	564	200 GONE
20	Pump Lead Cement	12/15/2024	19:49	12.7	7	250	621	250 GONE
21	Pump Lead Cement	12/15/2024	19:59	12.7	5.5	300	400	300 GONE
22	Pump Lead Cement	12/15/2024	20:08	12.7	5.5	356	401	END OF LEAD SLURRY
23	Pump Tail Cement	12/15/2024	20:08	13.5	6	1	651	START TAIL SLURRY @ 13.5 PPG (1.85,8.98) 1161 SKS
24	Pump Tail Cement	12/15/2024	20:15	13.5	6.5	50	620	50 GONE
25	Pump Tail Cement	12/15/2024	20:23	13.5	6.5	100	641	100 GONE
26	Pump Tail Cement	12/15/2024	20:29	13.5	6.5	150	680	150 GONE
27	Pump Tail Cement	12/15/2024	20:38	13.5	7	200	700	200 GONE
28	Pump Tail Cement	12/15/2024	20:45	13.5	7	250	723	250 GONE
29	Pump Tail Cement	12/15/2024	20:52	13.5	6.5	300	650	300 GONE
30	Pump Tail Cement	12/15/2024	21:00	13.5	6.5	350	680	350 GONE
31	Pump Tail Cement	12/15/2024	21:09	13.5	4	382.5	283	END OF TAIL SLURRY
32	Shutdown	12/15/2024	21:09					SHUTDOWN/WASH TO PIT
33	Drop Top Plug	12/15/2024	21:21					DROP TOP PLUG
34	Pump Displacement	12/15/2024	21:21	8.34	4	1	180	START 192 BBLS FRESH WATER DISPLACEMENT WITH KCL
35	Pump Displacement	12/15/2024	21:27	8.34	10	50	1949	50 GONE
36	Pump Displacement	12/15/2024	21:32	8.34	10	100	2456	100 GONE

Line	Event	Date (MM/DD/YY)	Time (HH:MM)	Density (lb/gal)	Pump Rate (bpm)	Pump Volume (bbls)	Pipe Pressure (psi)	Comment
37	Pump Displacement	12/15/2024	21:38	8.34	10	150	3102	150 GONE
38	Pressure before slow	12/15/2024	21:42	8.34	10	182	3102	PRESSURE BEFORE SLOW
39	Slow Pump Rate	12/15/2024	21:42	8.34	4	182	2570	SLOW RATE PRESSURE
40	Final lift pressure	12/15/2024	21:46	8.34	4	192	2775	FINAL LIFT PRESSURE
41	Bump plug	12/15/2024	21:49	8.34	4	192	3705	LAND PLUG
42	Check Floats	12/15/2024	21:54					CHECK FLOATS
43	End Job	12/15/2024	21:54					END OF CEMENTING SERVICES
44	Rig Down Iron	12/15/2024	22:30					
45	Safety Meeting	12/15/2024	22:35					PRE CONVOY SAFETY MEETING
46	Depart Location	12/15/2024	23:00					
47	End Job	12/15/2024	23:00					

## Pump Diagrams



JobMaster Program Version 5.01C1  
Job Number: 93933  
Customer: TERRA  
Well Name: FEDERAL RG 24-12 298



Job Start: Sunday, December 15, 2024