



TEP ROCKY MOUNTAIN LLC SURFACE POST JOB REPORT

FEDERAL #RG 24-12-298 05-103-12588
S:13 T:2S R:98W Rio Blanco CO

CallSheet #: 92588
Proposal #: 78128



SURFACE Post Job Report

Attention: Mr. Dustin Childers | (936) 524-8828 | dchilders@terraep.com
Terra Energy Partners, LLC
4828 Loop Central Dr., Suite 900 | Houston, TX 77081

Dear Mr. Dustin Childers,

Thank you for the opportunity to provide cementing services on this well. American Cementing strives to achieve complete customer satisfaction. If you have any questions regarding the services or data provided, please contact American Cementing at any time.

Sincerely,

Addison Kneale

Field Engineer I | (904) 228-9560 | addison.kneale@americacementing.com

Field Office 28730 US-6, Rifle, CO 81650
Phone: (970) 657-1187

Job Details & Summary

Geometry

Type	Function	OD (in)	ID (in)	Weight (lb/ft)	Thread	Top (ft)	Bottom (ft)	Excess (%)
Casing	Outer	20	19.5	53	n/a	0	80	0
Open Hole	Outer	n/a	17.5	n/a	n/a	80	1375	30
Casing	Inner	13.375	12.615	54.5	n/a	0	1375	0

Equipment / People

Unit Type	Unit	Power Unit	Employee #1
Field Storage Silo	FSS-473		
Cement Trailer Float	CTF-263	TRC-201	Travis Ballard
Light Duty Vehicles	LDV-145		Collin Woronovitch
Cement Pump Float	CPF-053	TRH-1140	Danny Ridgeway

Timing

Event	Date/Time
ERTS	08/12/2024 19:00
Call Out	8/12/2024 13:30
Depart Facility	8/12/2024 15:30
On Location	8/12/2024 16:30
Rig Up Iron	8/12/2024 17:00
Job Started	8/12/2024 22:15
Job Completed	8/13/2024 00:30
Rig Down Iron	8/13/2024 00:45
Depart Location	8/13/2024 02:00

General Job Information

Metrics	Value
Well Fluid Density	9 lb/gal
Well Fluid Type	WBM
Rig Circulation Vol	800 bbls
Rig Circulation Time	1.5 hours
Calculated Displacement	207 bbls
Actual Displacement	207 bbls
Total Spacer to Surface	75 bbls
Total CMT to Surface	57 bbls
Well Topped Out	N/A

Job Details

Metrics	Value
Well Full Prior to Job	Yes
Well Fluid Density Into Well	9 lb/gal
Well Fluid Density Out of Well	9 lb/gal

Job Details (cont.)

Metrics	Value
BHCT	84 °F
BHST	102 °F

Water Analysis

Metrics	Value	Recommended
Water Source	Upright Rig Tank	
Temperature	67 °F	50-80 °F
pH Level	7	5.5-8.5
Chlorides	60 mg/L	0-3000 mg/L
Total Alkalinity	40	0-1000
Total Hardness	50 mg/L	0-500 mg/L
Carbonates	N/A mg/L	0-100 mg/L
Sulfates	<200 mg/L	0-1500 mg/L
Potassium	100 mg/L	0-3000 mg/L
Iron	0 mg/L	0-300 mg/L

Circulation

Lost Circulation Experienced
No



Job Execution Information

Fluid	Product	Function	Density (lb/gal)	Yield (ft ³ /sk)	Water Rq. (gal/sk)	Water Rq. (gal/bbl)	Volume (sks)	Volume (bbl)	Designed Top (ft)
1	Flush	Flush	8.34			42.00		20.00	0
2	Primary	Primary	12.30	2.31	13.17		558.00	229.49	0
3	Displacement	DisplacementFinal	8.34			42.00		207.00	0

Job Fluid Details

Fluid	Type	Fluid	Product	Function	Conc.	Uom
2	Primary	Primary	ASTM TYPE IL	Cement	100.00	%
2	Primary	Primary	A-10	Accelerator	5.00	%BWOB
2	Primary	Primary	A-2	Accelerator	3.00	lb/sk
2	Primary	Primary	A-7P	Accelerator	2.00	lb/sk
2	Primary	Primary	IntegraSeal POLI	LostCirculation	0.25	lb/sk
2	Primary	Primary	STATIC FREE	Other	0.01	lb/sk
2	Primary	Primary	XCem-311	Defoamer	0.30	%BWOB

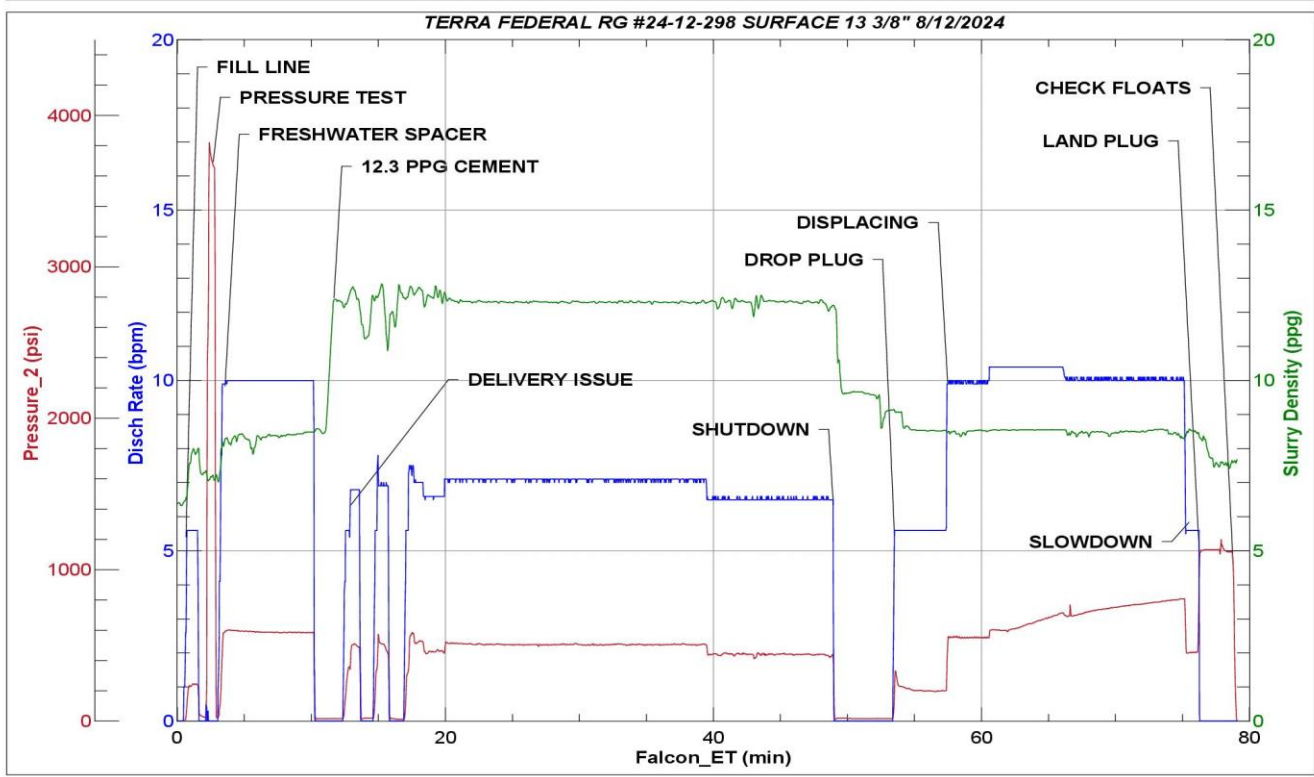
Job Logs

Line	Event	Date (MM/DD/YY)	Time (HH:MM)	Density (lb/gal)	Pump Rate (bpm)	Pump Volume (bbls)	Pipe Pressure (psi)	Comment
1	Callout	8/12/2024	13:30					CREW CALLED OUT FOR LOCATION TIME OF 19:00 8/12/2024
2	Depart Location	8/12/2024	16:00					CREW DEPARTS STAGING FOR RIG LOCATION
3	Arrive On Location	8/12/2024	16:30					CREW AND EQUIPMENT ARRIVED ON LOCATION. RIG IS RUNNING CASING
4	Rig Up Iron	8/12/2024	17:00					PRE RIG UP MEETING / RIG UP IRON HOSES AND EQUIPMENT ON STANDBY @ 18:30 WAITING FOR CASING TO BE RAN. RIG CIRCULATED 1.5 HOURS 800 BBLs
5	Safety Meeting	8/12/2024	22:15					PRE JOB SAFTEY MEETING WITH RIG CREW AND COMPANY MAN.
6	Fill Lines	8/12/2024	22:32	8.34	5.6	5	225	FILL LINES WITH 5 BBLs OF FRESH WATER
7	Pressure Test Lines	8/12/2024	22:34	8.34	1	1	3800	PRESSURE TEST PUMP AND LINES
8	Other	8/12/2024	22:36	8.34	10	70	600	FINISH PUMPING 75 BBLs FRESHWATER SPACER
9	Pump Cement	8/12/2024	22:43	12.3	5.6	0	365	BEGIN PUMPING 12.3 PPG, 2.31Y, 13.2MW PRIMARY CEMENT, WEIGHT VERIFIED BY MUD SCALE
10	Pump Cement	8/12/2024	22:53	12.3	7	50	508	50 BBLs CEMENT AWAY
11	Pump Cement	8/12/2024	23:00	12.3	7	50	504	100 BBLs CEMENT AWAY
12	Pump Cement	8/12/2024	23:07	12.3	7	50	505	150 BBLs CEMENT AWAY
13	Pump Cement	8/12/2024	23:15	12.3	6.5	50	440	200 BBLs CEMENT AWY
14	Pump Cement	8/12/2024	23:20	12.3	6.5	29	430	229 BBLs (558 SKS) PRIMARY CEMENT PUMPED
15	Drop Top Plug	8/12/2024	23:25	8.34	5.6	0	300	DROP PLUG, WITNESSED BY COMPANY MAN. BEGIN PUMPING FRESHWATER DISPLACEMENT.
16	Pump Displacement	8/12/2024	23:31	8.34	10	50	585	50 BBLs DISPLACEMENT PUMPED.
17	Pump Displacement	8/12/2024	23:36	8.34	10	50	706	100 BBLs DISPLACEMENT PUMPED
18	Pump Displacement	8/12/2024	23:41	8.34	10	50	760	150 BBLs DISPLACEMENT PUMPED. GOOD CEMENT TO SURFACE @ 150 BBLs DISPLACED. SLOW TO 5.6 BPM @ 200 BBLs. MAX LIFT- 820 PSI @ 10 BPM
19	Pump Displacement	8/12/2024	23:47	8.34	5.6	57	500	207 BBLs (CALCULATED) DISPLACEMENT PUMPED. 57 BBLs CEMENT TO SURFACE
20	Land Plug	8/12/2024	23:47				1155	PLUG LANDED. FCP- 500 PSI BUMP TO- 1155 PSI
21	Check Floats	8/12/2024	23:49			1		BLEED OFF PRESSURE-CHECK FLOATS, FLOATS HELD. 1 BBL BACK
22	Test Casing	8/12/2024	23:55	8.34	1	1	1166	START 30 MINUTE 1100 PSI CASING TEST. START-1150 PSI END- 1166 PSI
23	Check Floats	8/13/2024	00:27			1		BLEED OFF PRESSURE-CHECK FLOATS, FLOATS HELD. 1 BBLs BACK
24	End Job	8/13/2024	00:30					END CEMENTING SERVICES
25	Safety Meeting	8/13/2024	00:40					PRE RIG DOWN SAFETY MEETING
26	Rig Down Iron	8/13/2024	00:45					RIG DOWN EQUIPMENT, IRON AND HOSES
27	Depart Location	8/13/2024	02:00					CREW DEPARTS LOCATION FOR RCO YARD

Pump Diagrams



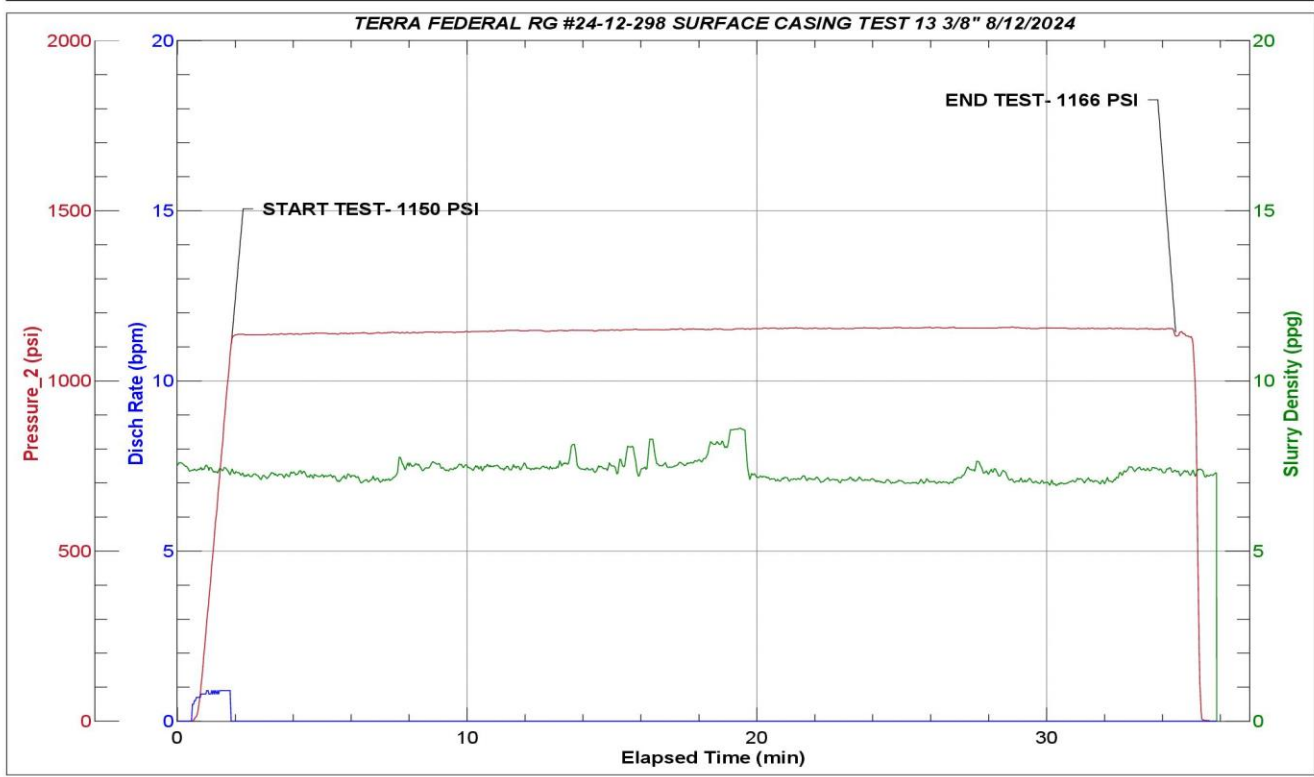
JobMaster Program Version 5.01C1
Job Number: 92588
Customer: TERRA
Well Name: FEDERAL RG 24-12-298



Job Start: Monday, August 12, 2024



JobMaster Program Version 5.01C1
Job Number: 92588
Customer: TERRA
Well Name: FEDERAL RG 24-12-298



Job Start: Monday, August 12, 2024