



TEP ROCKY MOUNTAIN LLC LONG STRING POST JOB REPORT

**FEDERAL #RG 331-14-298 05-103-12589
S:13 T:2S R:98W Rio Blanco CO**

CallSheet #: 93294
Proposal #: 79241



LONG STRING Post Job Report

Attention: Mr. Dustin Childers | (936) 524-8828 | dchilders@terraep.com

Terra Energy Partners, LLC

4828 Loop Central Dr., Suite 900 | Houston, TX 77081

Dear Mr. Dustin Childers,

Thank you for the opportunity to provide cementing services on this well. American Cementing strives to achieve complete customer satisfaction. If you have any questions regarding the services or data provided, please contact American Cementing at any time.

Sincerely,

Krystal Schell

Field Engineer I | (719) 992-1830 | krystal.schell@americacementing.com

Field Office 28730 US-6, Rifle, CO 81650
Phone: (970) 657-1187

Job Details & Summary

Geometry

Type	Function	OD (in)	ID (in)	Weight (lb/ft)	Thread	Top (ft)	Bottom (ft)	Excess (%)
Casing	Outer	9.625	8.921	36	n/a	0	3253	0
Open Hole	Outer	n/a	8.75	n/a	n/a	3253	8206	75
Open Hole	Outer	n/a	8.75	n/a	n/a	8206	12171	75
Casing	Inner	4.5	4	11.6	n/a	0	12171	0

Equipment / People

Unit Type	Unit	Power Unit	Employee #1
Field Storage Silo	FSS-473		
Field Storage Silo	FSS-792		
Cement Trailer Float	CTF-280	TRC-059	Shawn Levings
Light Duty Vehicles	LDV-157		Francisco Castillo
Cement Pump Float	CPF-011	TRH-677	Jeremy Bradbrook
Cement Pump Float	CPF-053	TRH-1140	Steven Richey

Timing

Event	Date/Time
ERTS	10/12/2024 00:00
Call Out	10/12/2024 00:00
Depart Facility	10/12/2024 01:23
On Location	10/12/2024 02:30
Rig Up Iron	10/12/2024 02:45
Job Started	10/12/2024 05:30
Job Completed	10/12/2024 08:22
Rig Down Iron	10/12/2024 08:30
Depart Location	10/12/2024 09:30

General Job Information

Metrics	Value
Well Fluid Density	9.9 lb/gal
Well Fluid Type	WBM
Rig Circulation Vol	450 bbls
Rig Circulation Time	0.45 hours
Calculated Displacement	188 bbls
Actual Displacement	188 bbls
Total Spacer to Surface	0 bbls
Total CMT to Surface	0 bbls
Well Topped Out	N/A

Job Details

Metrics	Value
Flare Prior to Job	No
Flare Prior to Job	0 units
Flare During Job	No
Flare During Job	0 units
Flare at End of Job	No
Flare at End of Job	0 units
Well Full Prior to Job	Yes
Well Fluid Density Into Well	9.9 lb/gal
Well Fluid Density Out of Well	9.9 lb/gal

Job Details (cont.)

Metrics	Value
BHCT	202 °F
BHST	267 °F

Water Analysis

Metrics	Value	Recommended
Water Source	Upright Rig Tank	
Temperature	65 °F	50-80 °F
pH Level	7	5.5-8.5
Chlorides	0 mg/L	0-3000 mg/L
Total Alkalinity	240	0-1000
Total Hardness	250 mg/L	0-500 mg/L
Carbonates	0 mg/L	0-100 mg/L
Sulfates	200 mg/L	0-1500 mg/L
Potassium	250 mg/L	0-3000 mg/L
Iron	0 mg/L	0-300 mg/L

Circulation

Lost Circulation Experienced	Losses into Spacer	Losses into Cement	Losses into Displacement
Yes	N/A	N/A	N/A

Circulation Details

NO RETURNS THROUGH OUT THE ENTIRE JOB

Job Execution Information

Fluid	Product	Function	Density (lb/gal)	Yield (ft ³ /sk)	Water Rq. (gal/sk)	Water Rq. (gal/bbl)	Volume (sks)	Volume (bbl)	Designed Top (ft)
1	Water	Flush	8.34			42.00		10.00	4779
2	Lead	Lead	12.70	2.13	11.41		840.00	318.25	4883
3	Tail	Tail	13.50	1.85	8.99		1162.00	381.97	8206
4	Displacement	DisplacementFinal	8.34			42.00		188.00	0

Job Fluid Details

Fluid	Type	Fluid	Product	Function	Conc.	Uom
2	Lead	Lead	ASTM TYPE IL	Cement	100.00	%
2	Lead	Lead	FL-66	FluidLoss	0.20	%BWOB
2	Lead	Lead	GW-86	Viscosifier	0.05	%BWOB
2	Lead	Lead	IntegraSeal PHENO	LostCirculation	3.00	lb/sk
2	Lead	Lead	IntegraSeal POLI	LostCirculation	0.25	lb/sk
2	Lead	Lead	R-3	Retarder	0.70	%BWOB
2	Lead	Lead	STATIC FREE	Other	0.01	lb/sk
2	Lead	Lead	XCem-1009	Extender	10.00	lb/sk
2	Lead	Lead	XCem-311	Defoamer	0.30	%BWOB
3	Tail	Tail	BA-90	BondEnhancer	10.00	%
3	Tail	Tail	CLASS G	Cement	70.00	%
3	Tail	Tail	FLY ASH (POZZOLAN)	Extender	20.00	%
3	Tail	Tail	BENTONITE	Viscosifier	6.00	%BWOB
3	Tail	Tail	FL-24	FluidLoss	0.40	%BWOB
3	Tail	Tail	IntegraSeal PHENO	LostCirculation	3.00	lb/sk
3	Tail	Tail	R-3	Retarder	0.20	%BWOB
3	Tail	Tail	S-8	StrengthRetrogression	25.00	%BWOB
3	Tail	Tail	XCem-311	Defoamer	0.30	%BWOB

Job Logs

Line	Event	Date (MM/DD/YY)	Time (HH:MM)	Density (lb/gal)	Pump Rate (bpm)	Pump Volume (bbls)	Pipe Pressure (psi)	Comment
1	CALLOUT	10/12/2024	00:00					ON LOCATION AT 04:00 HRS
2	LEAVE THE YARD	10/12/2024	01:23					CREW LEAVE THE YARD
3	ON LOCATION	10/12/2024	02:30					CREW ON LOCATION
4	RIG UP	10/12/2024	02:45					RIG UP MEETING, RIG UP
5	SAFETY MEETING	10/12/2024	05:00					PRE-JOB SAFETY MEETING
6	PRESSURE TEST	10/12/2024	05:27				5383	PRESSUR TEST LINES
7	WATER SPACER	10/12/2024	05:30	8.34	5	10	673	WATER SPACER
8	LEAD CEMENT	10/12/2024	05:35	12.7	5	50	351	LEAD 840 SKS/318 BBLs AT 12.7 PPG
9	LEAD CEMENT	10/12/2024	05:45	12.7	5	50	431	100 BBLs LEAD CEMENT PUMPED
10	LEAD CEMENT	10/12/2024	05:55	12.7	5	50	403	150 BBLs LEAD CEMENT PUMPED
11	LEAD CEMENT	10/12/2024	06:05	12.7	5	50	409	200 BBLs LEAD CEMENT PUMPED
12	LEAD CEMENT	10/12/2024	06:14	12.7	5	50	455	250 BBLs LEAD CEMENT PUMPED
13	LEAD CEMENT	10/12/2024	06:24	12.7	6	68	447	318 BBLs LEAD CEMENT PUMPED
14	TAIL CEMENT	10/12/2024	06:35	13.5	6	50	629	TAIL 1162 SKS/383 BBLs AT 13.5 PPG
15	TAIL CEMENT	10/12/2024	06:44	13.5	6	50	515	100 BBLs TAIL CEMENT PUMPED
16	TAIL CEMENT	10/12/2024	06:53	13.5	6	50	627	150 BBLs TAIL CEMENT PUMPED
17	TAIL CEMENT	10/12/2024	07:03	13.5	6	50	697	200 BBLs TAIL CEMENT PUMPED
18	TAIL CEMENT	10/12/2024	07:10	13.5	5	50	509	250 BBLs TAIL CEMENT PUMPED
19	TAIL CEMENT	10/12/2024	07:20	13.5	5	50	429	300 BBLs TAIL CEMENT PUMPED
20	TAIL CEMENT	10/12/2024	07:30	13.5	5	83	527	383 BBLs TAIL CEMENT PUMPED
21	SHUTDOWN	10/12/2024	07:42					WASH PUMP AND LINES, DROP PLUG
22	DISPLACEMENT	10/12/2024	07:54	8.5	8	50	905	DISPLACEMENT KCL WATER
23	DISPLACEMENT	10/12/2024	08:02	8.5	8	50	1413	100 BBLs DISPLACEMENT PUMPED
24	DISPLACEMENT	10/12/2024	08:08	8.5	8	78	2429	178 BBLs DISPLACEMENT PUMPED
25	SLOW RATE	10/12/2024	08:18	8.5	4	10	2065	SLOW RATE
26	LAND PLUG	10/12/2024	08:22				3171	LAND PLUG, NO RETURNS
27	CHECK FLOATS	10/12/2024	08:25					FLOATS HELD, 2.25 BBLs FLOW BACK
28	RIG DOWN	10/12/2024	08:30					RIG DOWN MEETING, RIG DOWN
29	LEAVE LOCATION	10/12/2024	09:30					CREW LEAVE LOCATION

Pump Diagrams

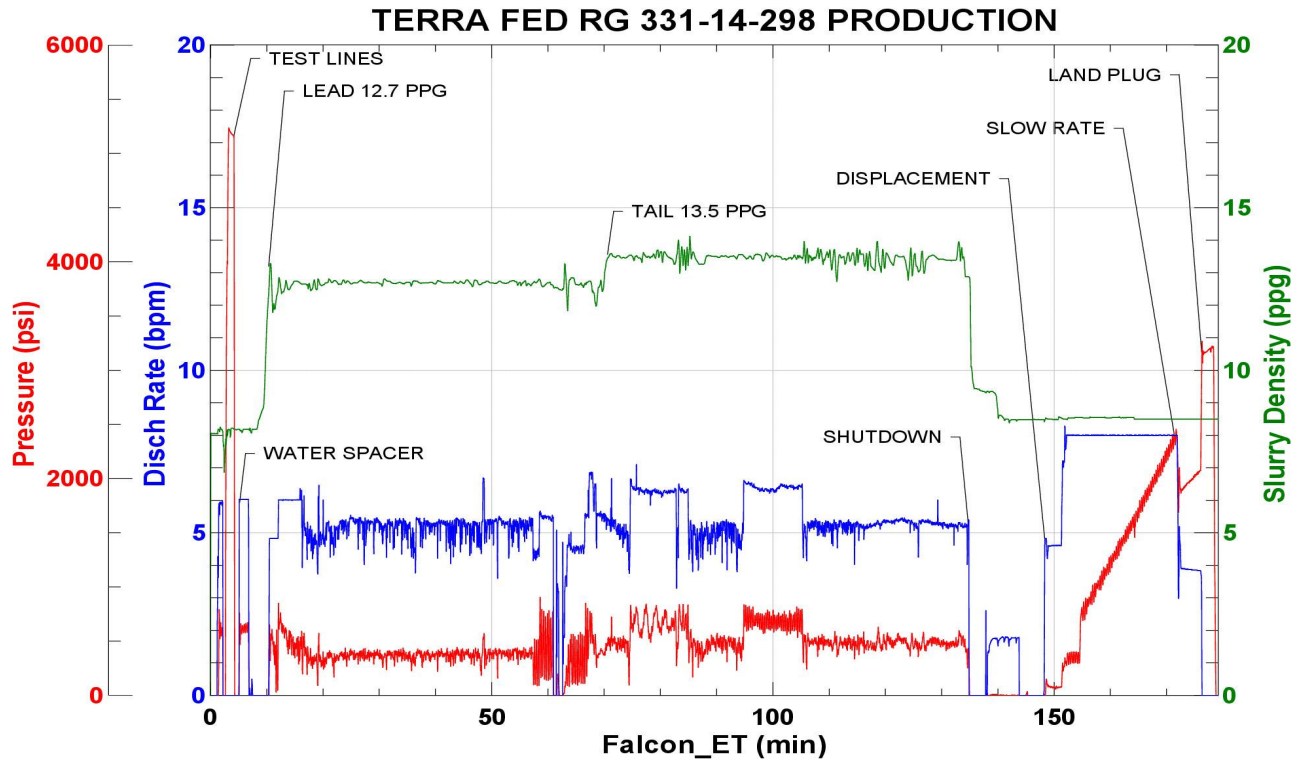


JobMaster Program Version 5.01C1

Job Number: 93294

Customer: TERRA

Well Name: FED RG 331-14-298



Job Start: Saturday, October 12, 2024