



TEP ROCKY MOUNTAIN LLC INTERMEDIATE POST JOB REPORT

**FEDERAL #RG 331-14-298 05-103-12589
S:13 T:2S R:98W Rio Blanco CO**

CallSheet #: 93198
Proposal #: 79113



INTERMEDIATE Post Job Report

Attention: Mr. Dustin Childers | (936) 524-8828 | dchilders@terraep.com
Terra Energy Partners, LLC
4828 Loop Central Dr., Suite 900 | Houston, TX 77081

Dear Mr. Dustin Childers,

Thank you for the opportunity to provide cementing services on this well. American Cementing strives to achieve complete customer satisfaction. If you have any questions regarding the services or data provided, please contact American Cementing at any time.

Sincerely,

Addison Kneale

Field Engineer I | (904) 228-9560 | addison.kneale@americacementing.com

Field Office 28730 US-6, Rifle, CO 81650
Phone: (970) 657-1187

Job Details & Summary

Geometry

Type	Function	OD (in)	ID (in)	Weight (lb/ft)	Thread	Top (ft)	Bottom (ft)	Excess (%)
Casing	Outer	13.375	12.615	54.5	n/a	0	1382	0
Open Hole	Outer	n/a	12.25	n/a	n/a	1382	2203	75
Open Hole	Outer	n/a	12.25	n/a	n/a	2203	3253	75
Casing	Inner	9.625	8.921	36	n/a	0	3253	0

Equipment / People

Unit Type	Unit	Power Unit	Employee #1
Cement Trailer Float	CTF-385	TRC-115	Shawn Levings
Light Duty Vehicles	LDV-147		Eric Brown
Cement Pump Float	CPF-136	TRH-959	Devin Burton
Cement Pump Float	CPF-012	TRH-855	Ryan Bonin

Timing

Event	Date/Time
ERTS	10/03/2024 22:00
Call Out	10/3/2024 17:30
Depart Facility	10/3/2024 20:30
On Location	10/3/2024 22:30
Rig Up Iron	10/3/2024 23:30
Job Started	10/4/2024 05:14
Job Completed	10/4/2024 06:34
Rig Down Iron	10/4/2024 07:30
Depart Location	10/4/2024 08:30

General Job Information

Metrics	Value
Well Fluid Density	9 lb/gal
Well Fluid Type	WBM
Rig Circulation Vol	450 bbls
Rig Circulation Time	1 hours
Calculated Displacement	248 bbls
Actual Displacement	248 bbls
Total Spacer to Surface	0 bbls
Total CMT to Surface	0 bbls
Well Topped Out	No
Top Out Volume	N/A bbls

Job Details

Metrics	Value
Well Full Prior to Job	Yes
Well Fluid Density Into Well	9 lb/gal
Well Fluid Density Out of Well	9 lb/gal

Job Details (cont.)

Metrics	Value
BHCT	81 °F
BHST	104 °F

Water Analysis

Metrics	Value	Recommended
Water Source	None	
Temperature	60 °F	50-80 °F
pH Level	6	5.5-8.5
Chlorides	200 mg/L	0-3000 mg/L
Total Alkalinity	100	0-1000
Total Hardness	50 mg/L	0-500 mg/L
Carbonates	10 mg/L	0-100 mg/L
Sulfates	150 mg/L	0-1500 mg/L
Potassium	200 mg/L	0-3000 mg/L
Iron	0 mg/L	0-300 mg/L

Circulation

Lost Circulation Experienced	Losses into Spacer	Losses into Cement	Losses into Displacement
Yes	N/A	N/A	23

Circulation Details

HAD RETURNS DURING CEMENT BUT LOST THEM DURING DISPLACEMENT

Job Execution Information

Fluid	Product	Function	Density (lb/gal)	Yield (ft ³ /sk)	Water Rq. (gal/sk)	Water Rq. (gal/bbl)	Volume (sks)	Volume (bbl)	Designed Top (ft)
1	Water	Flush	8.34			42.00		20.00	1998
2	Primary	Primary	12.80	2.03	11.16		293.00	106.15	2203
3	Water	DisplacementFinal	8.34			42.00		248.00	0

Job Fluid Details

Fluid	Type	Fluid	Product	Function	Conc.	Uom
2	Primary	Primary	ASTM TYPE IL	Cement	100.00	%
2	Primary	Primary	A-10	Accelerator	5.00	%BWOB
2	Primary	Primary	A-2	Accelerator	2.00	lb/sk
2	Primary	Primary	A-7P	Accelerator	2.00	lb/sk
2	Primary	Primary	IntegraSeal POLI	LostCirculation	0.25	lb/sk
2	Primary	Primary	STATIC FREE	Other	0.01	lb/sk
2	Primary	Primary	XCem-311	Defoamer	0.30	%BWOB

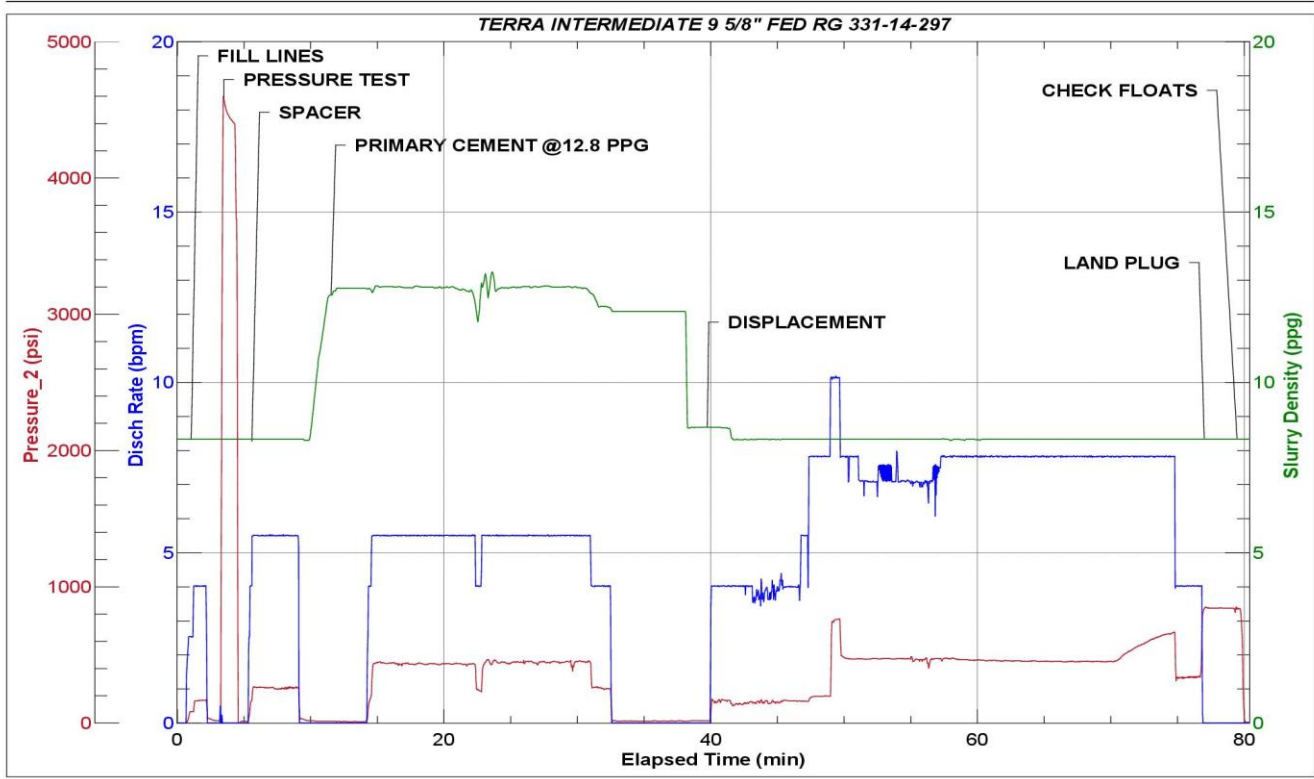
Job Logs

Line	Event	Date (MM/DD/YY)	Time (HH:MM)	Density (lb/gal)	Pump Rate (bpm)	Pump Volume (bbls)	Pipe Pressure (psi)	Comment
1	Callout	10/3/2024	17:30					CREW CALLED IN TO PRETRIP AND INSPECT EQUIPMENT
2	Safety Meeting	10/3/2024	19:30					PRE CONVOY SAFETY MEETING
3	Depart Location	10/3/2024	20:30					DEPART RCO YARD FOR CUSTOMER LOCATION
4	Arrive On Location	10/3/2024	22:30					ARRIVE ON CUSTOMER LOCATION PRE REQUEST
5	Safety Meeting	10/3/2024	22:45					PRE RIG UP SAFETY MEETING
6	Rig Up Iron	10/3/2024	23:30					RIG UP IRON AND HOSES REQ. FOR JOB
7	Waiting	10/3/2024	23:30					WAITING ON RIG TO FINISH RUNNING CASING
8	Safety Meeting	10/4/2024	05:00					PRE JOB SAFETY MEETING WITH RIG CREW AND COMPANY MAN
9	Start Job	10/4/2024	05:14					START JOB
10	Fill Lines	10/4/2024	05:15	8.34	4	5	220	FILL LINES WITH 5 BBLs FRESH WATER
11	Pressure Test Lines	10/4/2024	05:18	8.34	1	1	4504	PRESSURE TEST TO 4504 PSI
12	Pump Spacer	10/4/2024	05:19	8.34	5	20	309	PUMP 20 BBLs FRESH WATER SPACER
13	Pump Cement	10/4/2024	05:35	12.8	5	30	484	START MIXING AND PUMPING 106 BBLs (293 SKS) PRIMARY CEMENT @12.8 PPG. (2.03 YLD, 11.16 GPS) 30 BBLs PUMPED
14	Pump Cement	10/4/2024	05:42	12.8	5	30	487	60 BBLs PRIMARY CEMENT PUMPED
15	Pump Cement	10/4/2024	05:48	12.8	5	46	489	106 BBLs PRIMARY CEMENT PUMPED
16	Shutdown	10/4/2024	05:49					SHUT DOWN AND CLEAN PUMP
17	Drop Top Plug	10/4/2024	05:55					DROP TOP PLUG. VERIFIED BY COMPANY MAN
18	Pump Displacement	10/4/2024	06:06	8.34	8	50	495	START 248 BBL FRESH WATER DISPLACEMENT. LOST RETURNS 23 BBLs INTO DISPLACEMENT
19	Pump Displacement	10/4/2024	06:12	8.34	8	50	498	100 BBLs DISPLACEMENT PUMPED
20	Pump Displacement	10/4/2024	06:19	8.34	8	50	496	150 BBLs DISPLACEMENT PUMPED
21	Pump Displacement	10/4/2024	06:30	8.34	8	88	682	238 BBLs DISPLACEMENT PUMPED
22	Slow Pump Rate	10/4/2024	06:30	8.34	4	10	373	SLOW PUMP RATE TO PREPARE TO LAND PLUG. 248 BBLs DISPLACEMENT PUMPED
23	Land Plug	10/4/2024	06:32				885	PLUG LANDED. 373 FCP. PLUG LAND PRESSURE 885 PSI
24	Check Floats	10/4/2024	06:34					UPON FLOAT CHECK 1 BBL BACK
25	Safety Meeting	10/4/2024	06:45					PRE RIG DOWN SAFETY MEETING
26	Rig Down Iron	10/4/2024	07:30					RIG DOWN IRON
27	Safety Meeting	10/4/2024	08:00					PRE CONVOY SAFETY MEETING
28	Depart Location	10/4/2024	08:30					DEPART CUSTOMER LOCATION FOR RCO YARD
29	End Job	10/4/2024	08:30					END JOB

Pump Diagrams



JobMaster Program Version 5.01C1
 Job Number: 93198
 Customer: TERRA
 Well Name: FED RG 331-14-298



Job Start: Friday, October 04, 2024