



TEP ROCKY MOUNTAIN LLC INTERMEDIATE POST JOB REPORT

**FEDERAL #RG 522-13-298 05-103-12583
S:13 T:2S R:98W Rio Blanco CO**

CallSheet #: 93001
Proposal #: 78767



INTERMEDIATE Post Job Report

Attention: Mr. Dustin Childers | (936) 524-8828 | dchilders@terraep.com
Terra Energy Partners, LLC
4828 Loop Central Dr., Suite 900 | Houston, TX 77081

Dear Mr. Dustin Childers,

Thank you for the opportunity to provide cementing services on this well. American Cementing strives to achieve complete customer satisfaction. If you have any questions regarding the services or data provided, please contact American Cementing at any time.

Sincerely,

Addison Kneale

Field Engineer I | (904) 228-9560 | addison.kneale@americacementing.com

Field Office 28730 US-6, Rifle, CO 81650
Phone: (970) 657-1187

Job Details & Summary

Geometry

Type	Function	OD (in)	ID (in)	Weight (lb/ft)	Thread	Top (ft)	Bottom (ft)	Excess (%)
Casing	Outer	13.375	12.615	54.5	n/a	0	1385	0
Open Hole	Outer	n/a	12.25	n/a	n/a	1385	2692	75
Open Hole	Outer	n/a	12.25	n/a	n/a	2692	3112	75
Casing	Inner	9.625	8.921	36	n/a	0	3112	0

Equipment / People

Unit Type	Unit	Power Unit	Employee #1
Cement Trailer Float	CTF-249	TRC-424	Matthew Pinkney
Light Duty Vehicles	LDV-147		Eric Brown
Cement Pump Float	CPF-053	TRH-1137	Jacob Kirchenwitz

Timing

Event	Date/Time
ERTS	09/17/2024 00:00
Call Out	9/18/2024 02:30
Depart Facility	9/18/2024 07:30
On Location	9/18/2024 09:00
Rig Up Iron	9/18/2024 09:45
Job Started	9/18/2024 12:30
Job Completed	9/18/2024 13:47
Rig Down Iron	9/18/2024 14:30
Depart Location	9/18/2024 15:00

General Job Information

Metrics	Value
Well Fluid Density	8.6 lb/gal
Well Fluid Type	WBM
Rig Circulation Vol	238 bbls
Rig Circulation Time	1 hours
Calculated Displacement	241 bbls
Actual Displacement	241 bbls
Total Spacer to Surface	0 bbls
Total CMT to Surface	0 bbls
Well Topped Out	No
Top Out Volume	N/A bbls

Job Details

Metrics	Value
Well Full Prior to Job	No
Well Fluid Density Into Well	8.6 lb/gal
Well Fluid Density Out of Well	N/A lb/gal

Job Details (cont.)

Metrics	Value
BHCT	87 °F
BHST	117 °F

Water Analysis

Metrics	Value	Recommended
Water Source	None	
Temperature	60 °F	50-80 °F
pH Level	6	5.5-8.5
Chlorides	100 mg/L	0-3000 mg/L
Total Alkalinity	50	0-1000
Total Hardness	50 mg/L	0-500 mg/L
Carbonates	10 mg/L	0-100 mg/L
Sulfates	100 mg/L	0-1500 mg/L
Potassium	200 mg/L	0-3000 mg/L
Iron	0 mg/L	0-300 mg/L

Circulation

Lost Circulation Experienced	Losses into Spacer	Losses into Cement	Losses into Displacement
Yes	0	0	0

Circulation Details

NO RETURNS BEFORE OR DURING THE JOB AT ALL

Job Execution Information

Fluid	Product	Function	Density (lb/gal)	Yield (ft ³ /sk)	Water Rq. (gal/sk)	Water Rq. (gal/bbl)	Volume (sks)	Volume (bbl)	Designed Top (ft)
1	Water	Flush	8.34			42.00		20.00	1893
2	Primary	Primary	12.80	2.03	11.16		284.00	102.88	2098
3	Water	DisplacementFinal	8.34			42.00		238.00	0

Job Fluid Details

Fluid	Type	Fluid	Product	Function	Conc.	Uom
2	Primary	Primary	ASTM TYPE IL	Cement	100.00	%
2	Primary	Primary	A-10	Accelerator	5.00	%BWOB
2	Primary	Primary	A-2	Accelerator	2.00	lb/sk
2	Primary	Primary	A-7P	Accelerator	2.00	lb/sk
2	Primary	Primary	IntegraSeal POLI	LostCirculation	0.25	lb/sk
2	Primary	Primary	STATIC FREE	Other	0.01	lb/sk
2	Primary	Primary	XCem-311	Defoamer	0.30	%BWOB

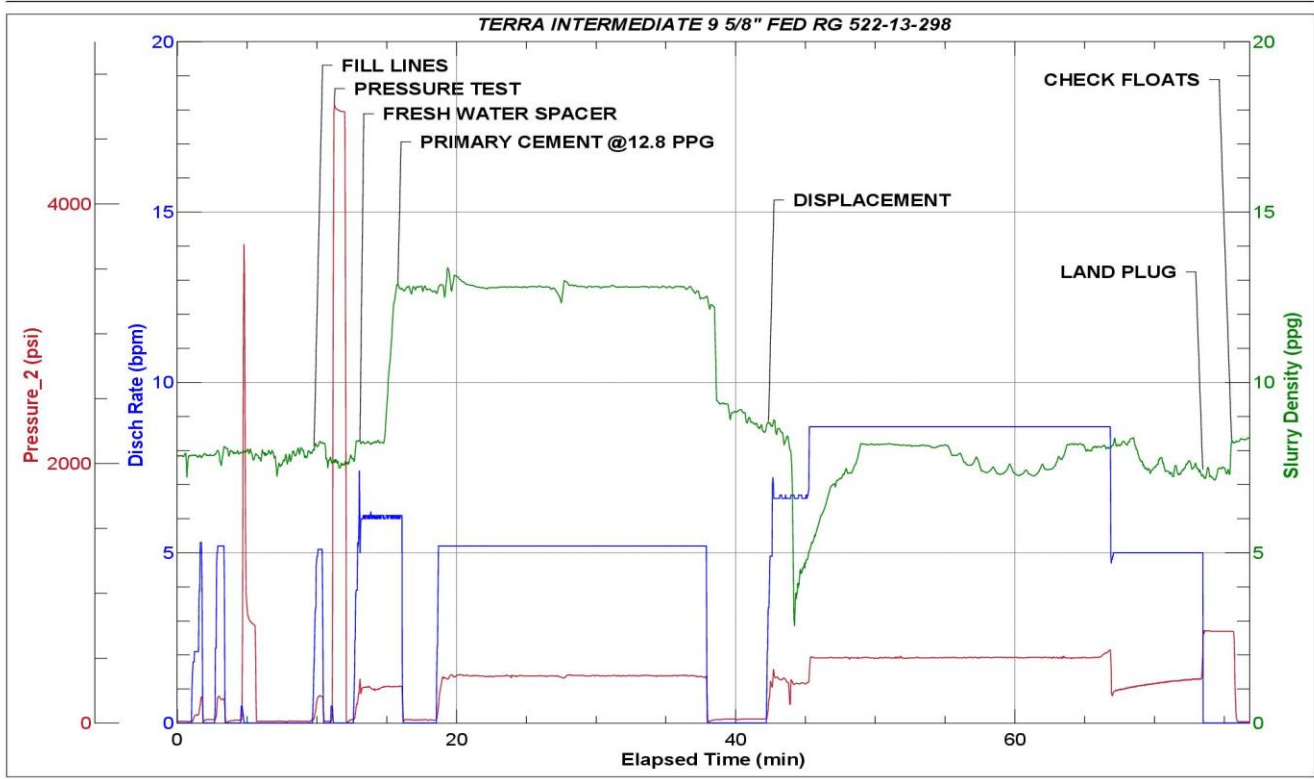
Job Logs

Line	Event	Date (MM/DD/YY)	Time (HH:MM)	Density (lb/gal)	Pump Rate (bpm)	Pump Volume (bbls)	Pipe Pressure (psi)	Comment
1	Callout	9/18/2024	02:30					CREW CALLED IN TO PRETRIP AND INSPECT EQUIPMENT
2	Safety Meeting	9/18/2024	05:00					PRE CONVOY SAFETY MEETING
3	Depart Location	9/18/2024	07:00					DEPART RCO YARD FOR CUSTOMER LOCATION
4	Arrive On Location	9/18/2024	09:00					ARRIVE ON CUSTOMER LOCATION
5	Safety Meeting	9/18/2024	09:05					PRE RIG UP SAFETY MEETING
6	Rig Up Iron	9/18/2024	09:45					RIG UP IRON AND HOSES NEEDED FOR THE JOB
7	Safety Meeting	9/18/2024	12:24					PRE JOB SAFETY MEETING
8	Start Job	9/18/2024	12:30					START JOB
9	Fill Lines	9/18/2024	12:32	8.34	5	5	206	FILL LINES WITH 5 BBLs OF FRESH WATER
10	Pressure Test Lines	9/18/2024	12:35	8.34	1	1	4713	PRESSURE TEST LINES TO 4713 PSI
11	Pump Spacer	9/18/2024	12:40	8.34	6	20	221	PUMP 20 BBL FRESH WATER SPACER
12	Pump Cement	9/18/2024	12:56	12.8	5.2	30	357	START MIXING AND PUMPING 103 BBLs (284 SKS) PRIMARY CEMENT @12.8 PPG (2.03 YLD, 11.16 GPS) VERIFIED BY MUDSCALE. 30 BBLs PUMPED
13	Pump Cement	9/18/2024	13:02	12.8	5.2	30	365	60 BBLs PRIMARY CEMENT PUMPED
14	Pump Cement	9/18/2024	13:09	12.8	5.2	43	360	103 BBLs PRIMARY CEMENT PUMPED
15	Shutdown	9/18/2024	13:09					SHUTDOWN
16	Drop Top Plug	9/18/2024	13:13					DROP TOP PLUG. VERIFIED BY COMPANY MAN
17	Pump Displacement	9/18/2024	13:20	8.34	8.5	50	504	START 238 BBL FRESH WATER DISPLACEMENT. 50 BBLs PUMPED.
18	Pump Displacement	9/18/2024	13:26	8.34	8.5	50	508	100 BBLs FRESH WATER PUMPED
19	Pump Displacement	9/18/2024	13:32	8.34	8.5	50	505	150 BBLs FRESH WATER PUMPED
20	Pump Displacement	9/18/2024	13:38	8.34	8.5	50	533	200 BBLs FRESH WATER PUMPED
21	Slow Pump Rate	9/18/2024	13:38	8.34	5	38	354	SLOW DOWN TO 5 BPM BECAUSE WE GOT LIFT PRESSURE. STAY AT 5 BPM UNTIL PLUG IS LANDED. 238 BBLs PUMPED
22	Land Plug	9/18/2024	13:44				710	PLUG LANDED. 354 FCP. PLUG LAND PRESSURE. 710 PSI
23	Check Floats	9/18/2024	13:47					1 BBL BACK UPON FLOAT CHECK
24	Safety Meeting	9/18/2024	13:50					PRE RIG DOWN SAFETY MEETING
25	Rig Down Iron	9/18/2024	14:30					RIG DOWN IRON AND HOSES
26	Safety Meeting	9/18/2024	14:45					PRE CONVOY SAFETY MEETING
27	Depart Location	9/18/2024	15:00					DEPART CUSTOMER LOCATION FOR RCO YARD
28	End Job	9/18/2024	15:00					END JOB

Pump Diagrams



JobMaster Program Version 5.01C1
 Job Number: 93001
 Customer: TERRA
 Well Name: FED RG 522-13-298



Job Start: Wednesday, September 18, 2024