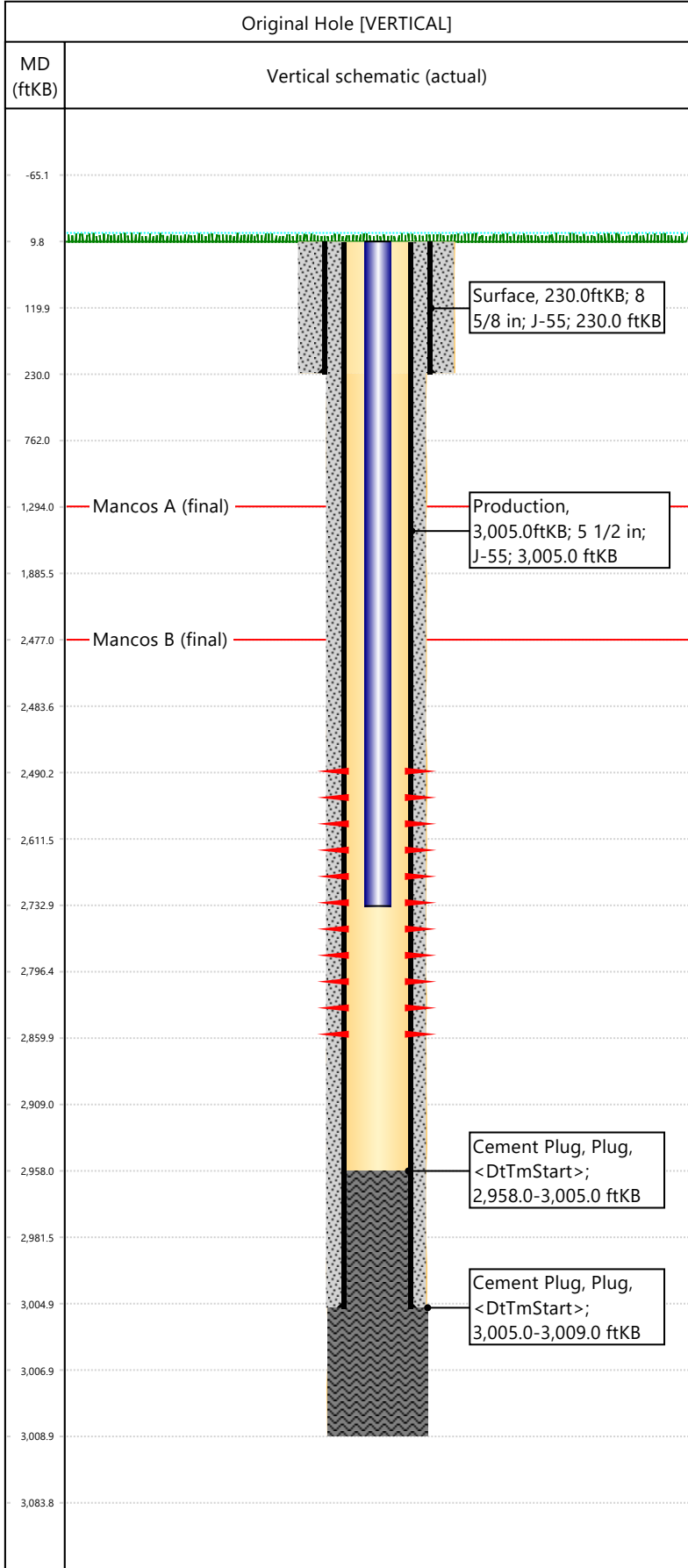


Well Name: DRAGON TRAIL UN 1085

API/UWI 05103093440000	Surface Legal Location 23-02S-102W	Field Name Dragon Trail	License #	State/Province CO	Well Configuration Type VERTICAL
Original KB Elevation (ft) 6,731	KB-Tubing Head Distance (ft)	Spud Date 6/6/1989 00:00	Rig Release Date	PBTD (All) (KB)	Total Depth All (TVD) (KB)



Hole Size						
Section Description	Size (in)	Bottom Depth (ftKB)				
Surface	12 1/4	230.0				
Section Description	Size (in)	Bottom Depth (ftKB)				
Production	7 7/8	3,009.0				
Formations						
Formation Name				Final Top MD (ftKB)		
Mancos A				1,294.0		
Formation Name				Final Top MD (ftKB)		
Mancos B				2,477.0		
Casing Strings						
Csg Des	OD (in)	Wt/Len (lb/ft)	Grade	Set Depth (ftKB)		
Surface	8 5/8	24.00	J-55	230.0		
Production	5 1/2	15.50	J-55	3,005.0		
Perforations						
Date	Top (ftKB)	Btm (ftKB)	Zone			
6/29/1989	2490	2860				
Total						
Tubing Strings						
Tubing Description	Run Date	String Length (ft)	Set Depth (ftKB)			
Tubing - Production	6/29/1989	2,723.00	2,733.0			
Item Des	Icon	Jts	OD (in)	Wt (lb/ft)	Grade	Len (ft)
Tubing			1.9	2.76	J-55	2723
Rod Strings						
Rod Description	Run Date	String Length (ft)	Set Depth (ftKB)			
Item Des	Icon	Jts	OD (in)	Wt (lb/ft)	Grade	Len (ft)
Other In Hole						
Des	Icon	OD (in)	Top (ftKB)	Btm (ftKB)	Run Date	Pull Date
Cement						
Description	Proposed/Actual Run	Type	Top Depth (ftKB)			
Surface Casing Cement	Actual	Casing	10.0			
Description	Proposed/Actual Run	Type	Top Depth (ftKB)			
Production Casing Cement	Actual	Casing	10.0			
Description	Proposed/Actual Run	Type	Top Depth (ftKB)			
Cement Plug	Actual	Plug	2,958.0			
Description	Proposed/Actual Run	Type	Top Depth (ftKB)			
Cement Plug	Actual	Plug	3,005.0			