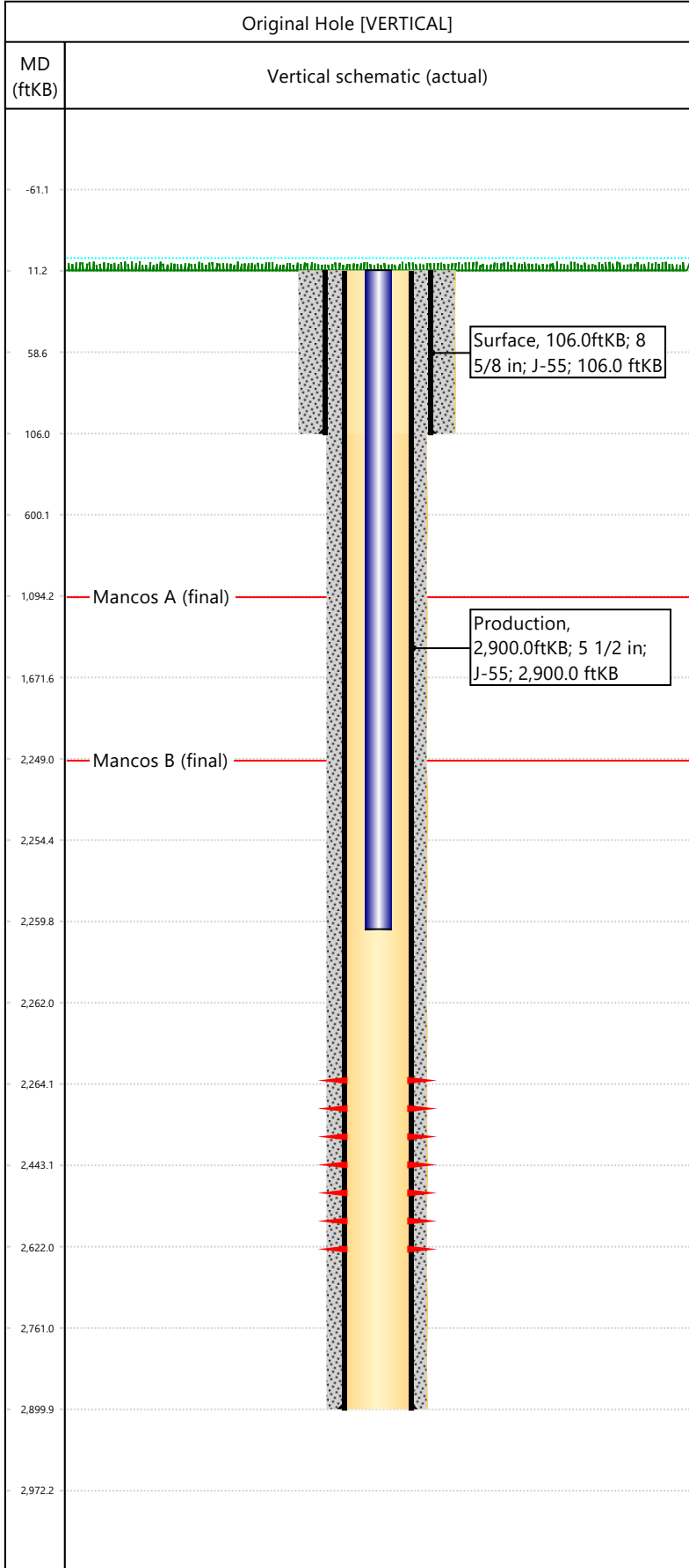


Well Name: DRAGON TRAIL UN 1031

API/UWI 05103071320000	Surface Legal Location 34-02S-102W	Field Name	License #	State/Province CO	Well Configuration Type VERTICAL
Original KB Elevation (ft) 6,476	KB-Tubing Head Distance (ft)	Spud Date 7/14/1968 00:00	Rig Release Date	PBTD (All) (KB)	Total Depth All (TVD) (KB)



Hole Size						
Section Description Surface	Size (in) 12 1/4	Bottom Depth (ftKB) 106.0				
Section Description Production	Size (in) 7 7/8	Bottom Depth (ftKB) 2,900.0				
Formations						
Formation Name Mancos A			Final Top MD (ftKB) 1,094.0			
Formation Name Mancos B			Final Top MD (ftKB) 2,249.0			
Casing Strings						
Csg Des	OD (in)	Wt/Len (lb/ft)	Grade	Set Depth (ftKB)		
Surface	8 5/8	24.00	J-55	106.0		
Production	5 1/2	14.00	J-55	2,900.0		
Perforations						
Date	Top (ftKB)	Btm (ftKB)	Zone			
8/13/1968	2264	2622				
Total						
Tubing Strings						
Tubing Description Tubing - Production	Run Date 7/14/1968	String Length (ft) 2,249.00	Set Depth (ftKB) 2,260.0			
Item Des	Icon	Jts	OD (in)	Wt (lb/ft)	Grade	Len (ft)
Tubing			1.9	2.90	J-55	2249
Rod Strings						
Rod Description	Run Date	String Length (ft)	Set Depth (ftKB)			
Item Des	Icon	Jts	OD (in)	Wt (lb/ft)	Grade	Len (ft)
Other In Hole						
Des	Icon	OD (in)	Top (ftKB)	Btm (ftKB)	Run Date	Pull Date
Cement						
Description Surface Casing Cement	Proposed/Actual Run Actual	Type Casing	Top Depth (ftKB) 11.0			
Description Production Casing Cement	Proposed/Actual Run Actual	Type Casing	Top Depth (ftKB) 11.0			