

FORM 19 DATA PACKET
GOLLNER O27-02 WELLHEAD & FLOWLINE

ECMC SPILL TRACKING # 32225
ECMC REMEDIATION # PENDING

Prepared for:

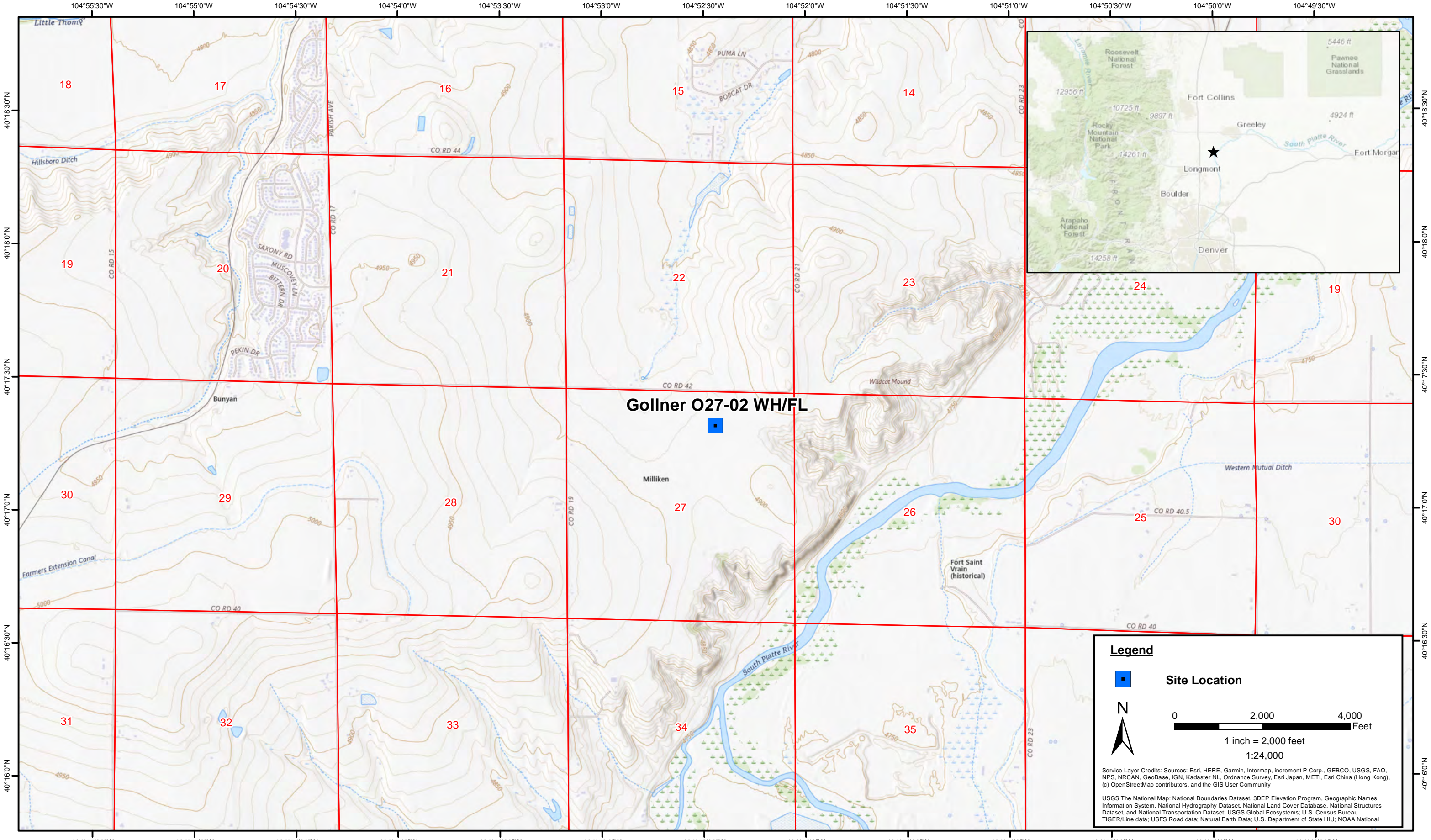


1099 18th Street
Suite 1500
Denver, CO 80202

Prepared by:




4725 Independence Street
Wheat Ridge, CO 80033




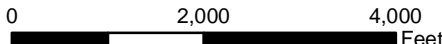
Gollner O27-02 WH/FL



Legend

 **Site Location**





1 inch = 2,000 feet
1:24,000

Service Layer Credits: Sources: Esri, HERE, Garmin, Intermap, increment P Corp., GEBCO, USGS, FAO, NPS, NRCAN, GeoBase, IGN, Kadaster NL, Ordnance Survey, Esri Japan, METI, Esri China (Hong Kong), (c) OpenStreetMap contributors, and the GIS User Community

USGS The National Map: National Boundaries Dataset, 3DEP Elevation Program, Geographic Names Information System, National Hydrography Dataset, National Land Cover Database, National Structures Dataset, and National Transportation Dataset; USGS Global Ecosystems; U.S. Census Bureau TIGER/Line data; USFS Road data; Natural Earth Data; U.S. Department of State HIU; NOAA National

DATE:	October 2025
DESIGNED BY:	J. Whritenour
DRAWN BY:	L. Reed

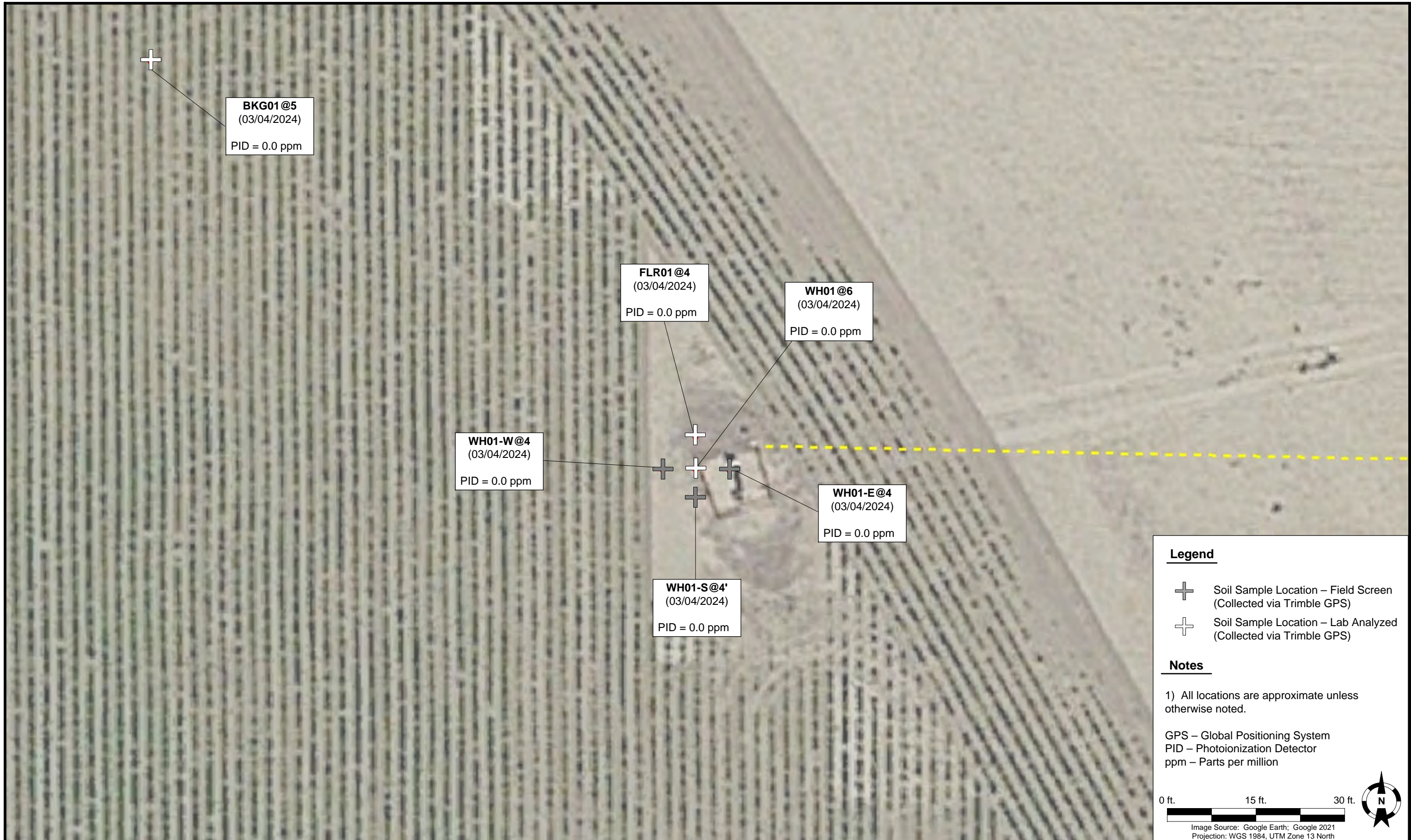


Tasman, Inc.
4725 Independence St.
Wheat Ridge, CO 80033

Noble Energy, Inc - 100322
Gollner O27-02 WH/FL
 NWNE Sec. 27-T4N-R67W
 Weld County, Colorado

Site Location Map

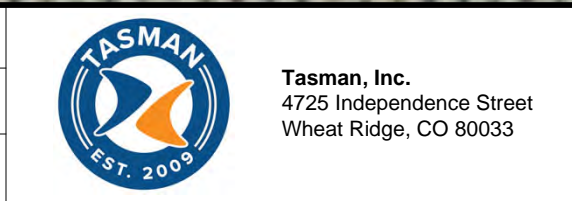
Figure
1



DATE: October 8, 2025

DESIGNED BY: J. Whritenour

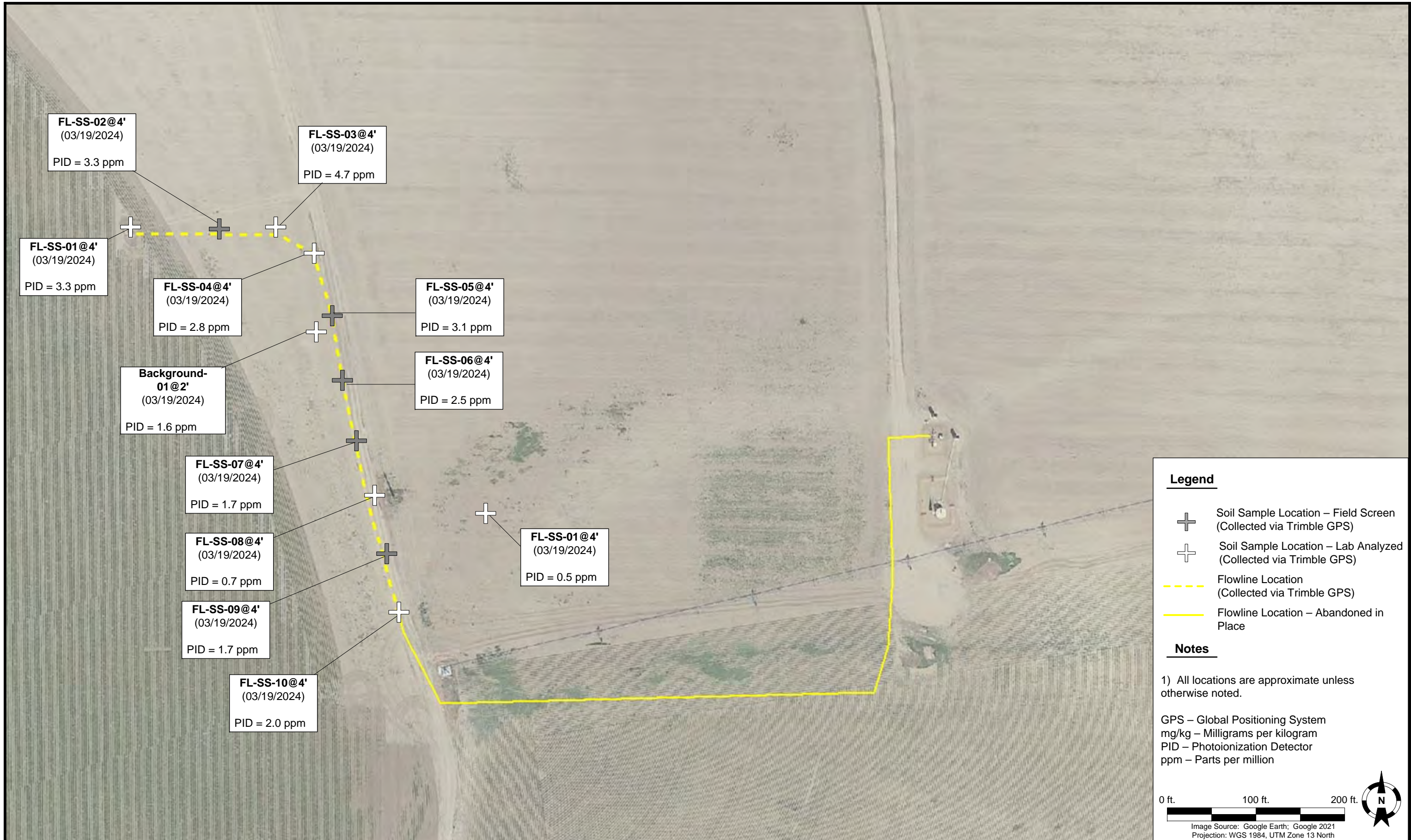
DRAWN BY: L. Blanchard



Noble Energy, Inc – 100332
Gollner O27-2 Wellhead
NWNE, Section 27, Township 4 North, Range 67 West
Weld County, Colorado

SOIL SAMPLE LOCATION MAP (WELLHEAD)

FIGURE 2



Legend

- ⊕ Soil Sample Location – Field Screen (Collected via Trimble GPS)
- ⊕ Soil Sample Location – Lab Analyzed (Collected via Trimble GPS)
- - - Flowline Location (Collected via Trimble GPS)
- Flowline Location – Abandoned in Place

Notes

1) All locations are approximate unless otherwise noted.

GPS – Global Positioning System
 mg/kg – Milligrams per kilogram
 PID – Photoionization Detector
 ppm – Parts per million


0 ft. 100 ft. 200 ft.

Image Source: Google Earth; Google 2021
 Projection: WGS 1984, UTM Zone 13 North

DATE: October 8, 2025

DESIGNED BY: J. Whritenour

DRAWN BY: L. Blanchard

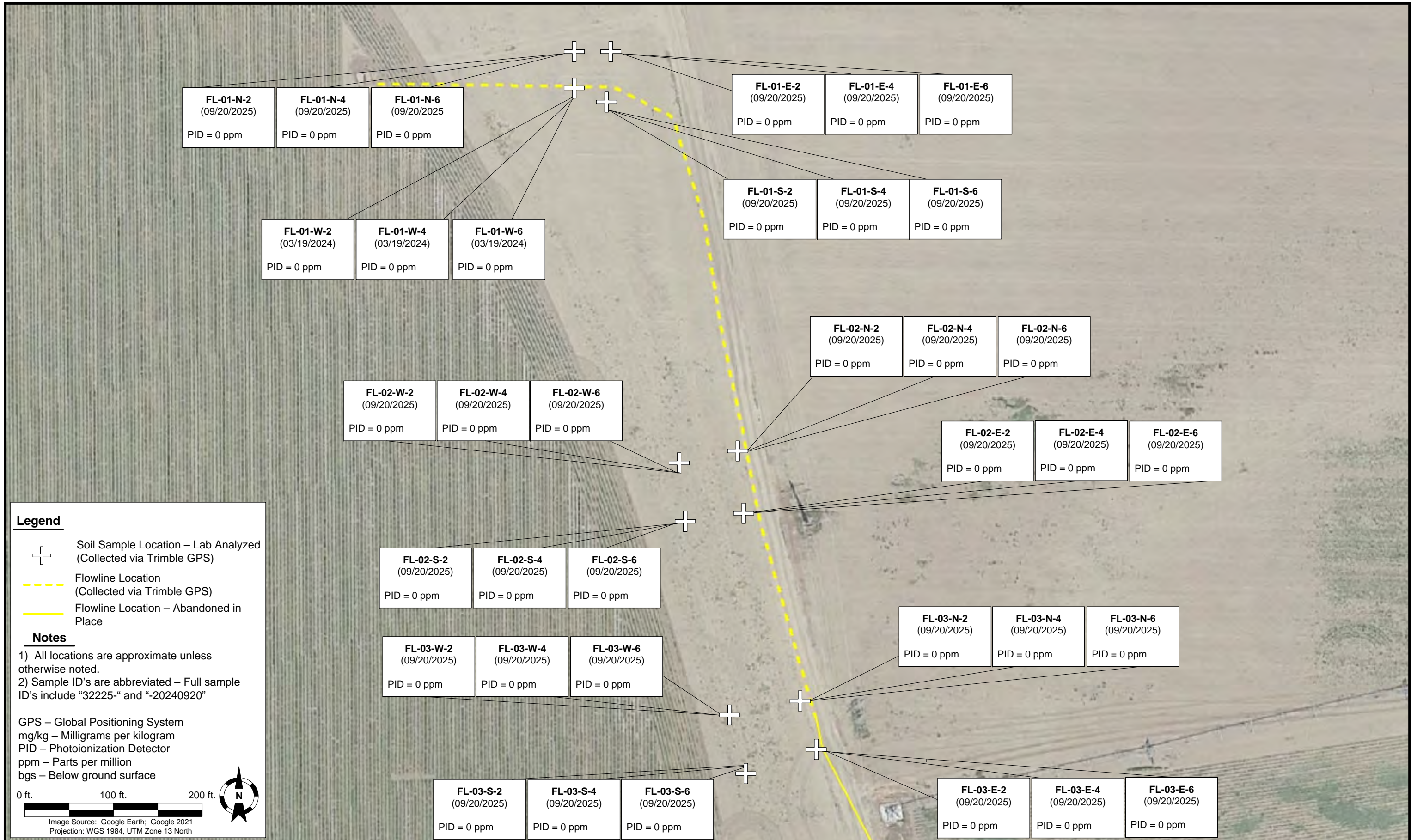


Tasman, Inc.
 4725 Independence Street
 Wheat Ridge, CO 80033

Noble Energy, Inc – 100332
Gollner O27-2 Flowline
 NWNE, Section 27, Township 4 North, Range 67 West
 Weld County, Colorado

SOIL SAMPLE LOCATION MAP (FLOWLINE)

FIGURE 3



Legend

- ⊕ Soil Sample Location – Lab Analyzed (Collected via Trimble GPS)
- Flowline Location (Collected via Trimble GPS)
- Flowline Location – Abandoned in Place

Notes

- 1) All locations are approximate unless otherwise noted.
- 2) Sample ID's are abbreviated – Full sample ID's include "32225-" and "-20240920"

GPS – Global Positioning System
 mg/kg – Milligrams per kilogram
 PID – Photoionization Detector
 ppm – Parts per million
 bgs – Below ground surface

0 ft. 100 ft. 200 ft.

Image Source: Google Earth; Google 2021
 Projection: WGS 1984, UTM Zone 13 North

DATE:	October 9, 2025
DESIGNED BY:	J. Whritenour
DRAWN BY:	L. Blanchard

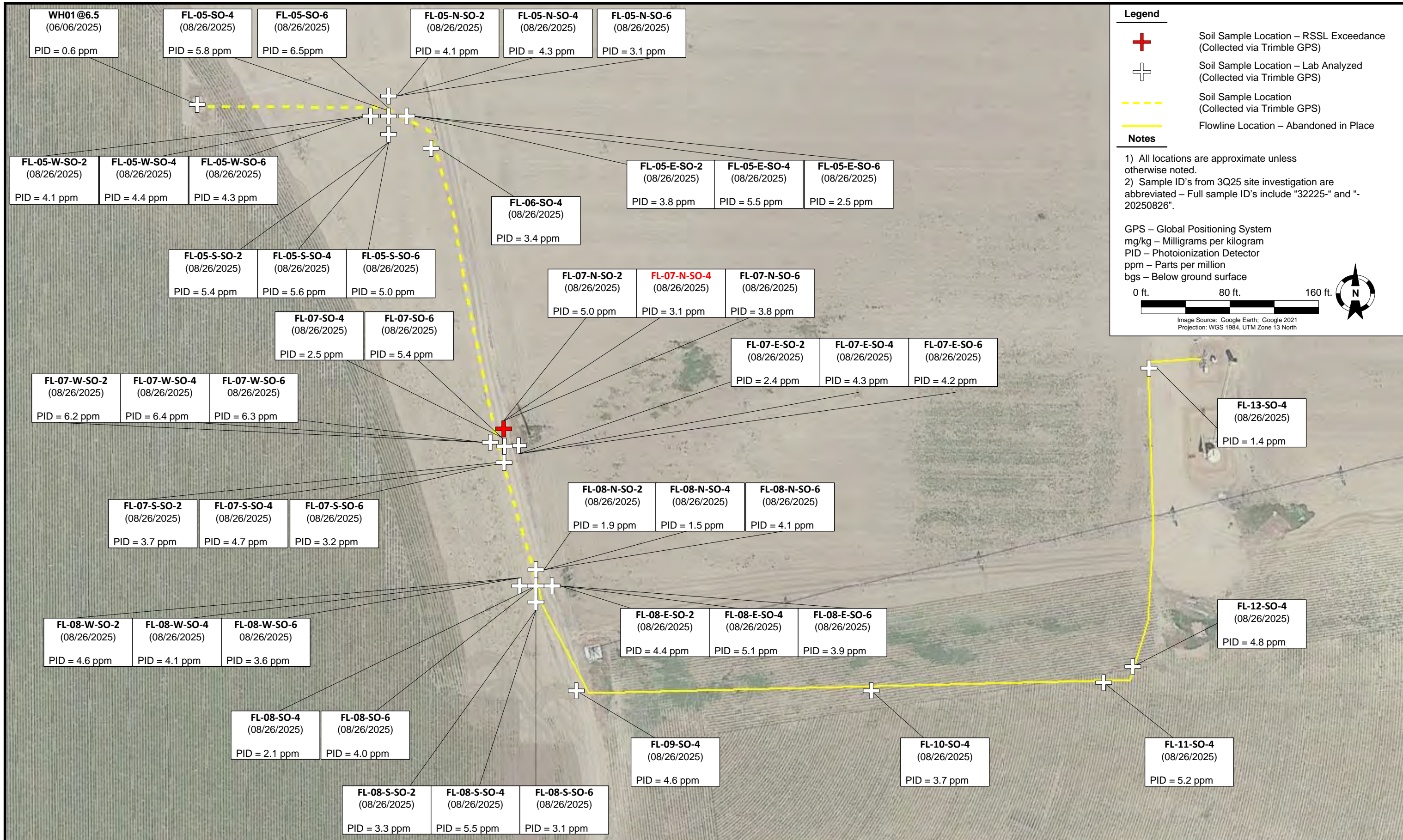


Tasman, Inc.
 4725 Independence Street
 Wheat Ridge, CO 80033

Noble Energy, Inc – 100332
Gollner O27-2 Flowline
 NWNE, Section 27, Township 4 North, Range 67 West
 Weld County, Colorado

SOIL SAMPLE
 LOCATION MAP
 (FLOWLINE)

FIGURE
 4



DATE: October 10, 2025

DESIGNED BY: J. Whritenour

DRAWN BY: L. Blanchard



Noble Energy, Inc – 100332
Gollner O27-2 Wellhead
 NWNE, Section 27, Township 4 North, Range 67 West
 Weld County, Colorado

SOIL SAMPLE LOCATION MAP (WELLHEAD & FLOWLINE)

FIGURE 5



Legend

- Soil Sample Location – Lab Analyzed (Collected via Trimble GPS)
- Flowline Location (Collected via Trimble GPS)
- Flowline Location – Abandoned in Place

Notes

1) All locations are approximate unless otherwise noted.
 2) Sample ID's from 3Q24 are abbreviated – Full sample ID's include "32225-" and "-20240919"
 3) Sample ID's from 3Q24 are abbreviated – Full sample ID's include "32225-" and "-20250826"

GPS – Global Positioning System
 PID – Photoionization Detector
 ppm – Parts per million
 Bgs – Below ground surface

0 ft. 100 ft. 200 ft.

Image Source: Google Earth; Google 2021
 Projection: WGS 1984, UTM Zone 13 North

DATE:	October 10, 2025
DESIGNED BY:	J. Whritenour
DRAWN BY:	L. Blanchard



Tasman, Inc.
 4725 Independence Street
 Wheat Ridge, CO 80033

Noble Energy, Inc – 100332
Gollner O27-2 Flowline
 NWNE, Section 27, Township 4 North, Range 67 West
 Weld County, Colorado

SOIL SAMPLE
 LOCATION MAP
 (FLOWLINE BACKGROUNDS)

FIGURE
 6

**TABLE 1
FIELD DATA SUMMARY TABLE
NOBLE ENERGY, INC. 100322
GOLLNER O27-02, WELD COUNTY, COLORADO
REM # 32225**



Sample ID	Sample Date	Depth (ft. bgs)	GPS Data ¹ Latitude/Longitude		PDOP Value	VOC Concentration ² (ppm)
<i>Wellhead Decommissioning</i>						
WH01@6	03/04/2024	6	40.289478	-104.875009	NC	0.0
FLR01@4	03/04/2024	4	40.289493	-104.875009	NC	0.0
WH01-W@4	03/04/2024	4	40.289478	-104.875029	NC	0.0
WH01-S@4	03/04/2024	4	40.289465	-104.875009	NC	0.0
WH01-E@4	03/04/2024	4	40.289478	-104.874989	NC	0.0
<i>Flowline Decommissioning</i>						
FL-SS-01 @ 4'	03/19/2024	4	40.289489	-104.874966	NC	3.3
FL-SS-02 @ 4'	03/20/2025	4	40.289483	-104.874616	NC	3.3
FL-SS-03 @ 4'	03/20/2025	4	40.289485	-104.874380	NC	4.7
FL-SS-04 @ 4'	03/20/2025	4	40.289408	-104.874225	NC	2.8
FL-SS-05 @ 4'	03/20/2025	4	40.289213	-104.874152	NC	3.1
FL-SS-06 @ 4'	03/20/2025	4	40.289012	-104.874110	NC	2.5
FL-SS-07 @ 4'	03/20/2025	4	40.288827	-104.874060	NC	1.7
FL-SS-08 @ 4'	03/21/2024	4	40.288656	-104.873989	NC	0.7
FL-SS-09 @ 4'	03/21/2024	4	40.288473	-104.873938	NC	1.7
FL-SS-10 @ 4'	03/21/2024	4	40.288293	-104.873890	NC	2.0
<i>3Q24 Site Investigation Samples</i>						
32225-FL-01-E-2-20240920	09/20/2024	2	40.289531	-104.874381	NC	0.0
32225-FL-01-E-4-20240920	09/20/2024	4	40.289531	-104.874381	NC	0.0
32225-FL-01-E-6-20240920	09/20/2024	6	40.289531	-104.874381	NC	0.0
32225-FL-01-N-2-20240920	09/20/2024	2	40.289529	-104.874473	NC	0.0
32225-FL-01-N-4-20240920	09/20/2024	4	40.289529	-104.874473	NC	0.0
32225-FL-01-N-6-20240920	09/20/2024	6	40.289529	-104.874473	NC	0.0
32225-FL-01-S-2-20240920	09/20/2024	2	40.289438	-104.874390	NC	0.0
32225-FL-01-S-4-20240920	09/20/2024	4	40.289438	-104.874390	NC	0.0
32225-FL-01-S-6-20240920	09/20/2024	6	40.289438	-104.874390	NC	0.0
32225-FL-01-W-2-20240920	09/20/2024	2	40.289462	-104.874466	NC	0.0
32225-FL-01-W-4-20240920	09/20/2024	4	40.289462	-104.874466	NC	0.0
32225-FL-01-W-6-20240920	09/20/2024	6	40.289462	-104.874466	NC	0.0
32225-FL-02-E-2-20240920	09/20/2024	2	40.288669	-104.874060	NC	0.0
32225-FL-02-E-4-20240920	09/20/2024	4	40.288669	-104.874060	NC	0.0
32225-FL-02-E-6-20240920	09/20/2024	6	40.288669	-104.874060	NC	0.0
32225-FL-02-N-2-20240920	09/20/2024	2	40.288780	-104.874071	NC	0.0
32225-FL-02-N-4-20240920	09/20/2024	4	40.288780	-104.874071	NC	0.0
32225-FL-02-N-6-20240920	09/20/2024	6	40.288780	-104.874071	NC	0.0
32225-FL-02-S-2-20240920	09/20/2024	2	40.288658	-104.874202	NC	0.0
32225-FL-02-S-4-20240920	09/20/2024	4	40.288658	-104.874202	NC	0.0
32225-FL-02-S-6-20240920	09/20/2024	6	40.288658	-104.874202	NC	0.0
32225-FL-02-W-2-20240920	09/20/2024	2	40.288765	-104.874222	NC	0.0
32225-FL-02-W-4-20240920	09/20/2024	4	40.288765	-104.874222	NC	0.0
32225-FL-02-W-6-20240920	09/20/2024	6	40.288765	-104.874222	NC	0.0
32225-FL-03-E-2-20240920	09/20/2024	2	40.288234	-104.873887	NC	0.0
32225-FL-03-E-4-20240920	09/20/2024	4	40.288234	-104.873887	NC	0.0
32225-FL-03-E-6-20240920	09/20/2024	6	40.288234	-104.873887	NC	0.0
32225-FL-03-N-2-20240920	09/20/2024	2	40.288322	-104.873921	NC	0.0
32225-FL-03-N-4-20240920	09/20/2024	4	40.288322	-104.873921	NC	0.0
32225-FL-03-N-6-20240920	09/20/2024	6	40.288322	-104.873921	NC	0.0

**TABLE 1
FIELD DATA SUMMARY TABLE
NOBLE ENERGY, INC. 100322
GOLLNER O27-02, WELD COUNTY, COLORADO
REM # 32225**



Sample ID	Sample Date	Depth (ft. bgs)	GPS Data ¹ Latitude/Longitude		PDOP Value	VOC Concentration ² (ppm)
32225-FL-03-S-2-20240920	09/20/2024	2	40.288188	-104.874053	NC	0.0
32225-FL-03-S-4-20240920	09/20/2024	4	40.288188	-104.874053	NC	0.0
32225-FL-03-S-6-20240920	09/20/2024	6	40.288188	-104.874053	NC	0.0
32225-FL-03-W-2-20240920	09/20/2024	2	40.288295	-104.874089	NC	0.0
32225-FL-03-W-4-20240920	09/20/2024	4	40.288295	-104.874089	NC	0.0
32225-FL-03-W-6-20240920	09/20/2024	6	40.288295	-104.874089	NC	0.0
<i>1Q25 Site Investigation Samples</i>						
WH01@6.5	3/6/2025	6.5	40.289478	-104.875009	NC	0.6
<i>3Q25 Site Investigation Samples</i>						
32225-FL-05-SO-4-20250826	08/26/2025	4	40.289447	-104.874357	NC	5.8
32225-FL-05-SO-6-20250826	08/26/2025	6	40.289447	-104.874357	NC	6.5
32225-FL-05-E-SO-2-20250826	08/26/2025	2	40.289446	-104.874320	NC	3.8
32225-FL-05-E-SO-4-20250826	08/26/2025	4	40.289446	-104.874320	NC	5.5
32225-FL-05-E-SO-6-20250826	08/26/2025	6	40.289446	-104.874320	NC	2.5
32225-FL-05-N-SO-2-20250826	08/26/2025	2	40.289480	-104.874356	NC	4.1
32225-FL-05-N-SO-4-20250826	08/26/2025	4	40.289480	-104.874356	NC	4.3
32225-FL-05-N-SO-6-20250826	08/26/2025	6	40.289480	-104.874356	NC	3.1
32225-FL-05-S-SO-2-20250826	08/26/2025	2	40.289416	-104.874362	NC	5.4
32225-FL-05-S-SO-4-20250826	08/26/2025	4	40.289416	-104.874362	NC	5.6
32225-FL-05-S-SO-6-20250826	08/26/2025	6	40.289416	-104.874362	NC	5.0
32225-FL-05-W-SO-2-20250826	08/26/2025	2	40.289449	-104.874403	NC	4.1
32225-FL-05-W-SO-4-20250826	08/26/2025	4	40.289449	-104.874403	NC	4.4
32225-FL-05-W-SO-6-20250826	08/26/2025	6	40.289449	-104.874403	NC	4.3
32225-FL-06-SO-4-20250826	08/26/2025	4	40.289369	-104.874224	NC	3.4
32225-FL-07-SO-4-20250826	08/26/2025	4	40.288633	-104.873988	NC	2.5
32225-FL-07-SO-6-20250826	08/26/2025	6	40.288633	-104.873988	NC	5.4
32225-FL-07-E-SO-2-20250826	08/26/2025	2	40.288630	-104.873946	NC	2.4
32225-FL-07-E-SO-4-20250826	08/26/2025	4	40.288630	-104.873946	NC	4.3
32225-FL-07-E-SO-6-20250826	08/26/2025	6	40.288630	-104.873946	NC	4.2
32225-FL-07-N-SO-2-20250826	08/26/2025	2	40.288669	-104.873994	NC	5.0
32225-FL-07-N-SO-4-20250826	08/26/2025	4	40.288669	-104.873994	NC	3.1
32225-FL-07-N-SO-6-20250826	08/26/2025	6	40.288669	-104.873994	NC	3.8
32225-FL-07-S-SO-2-20250826	08/26/2025	2	40.288593	-104.873987	NC	3.7
32225-FL-07-S-SO-4-20250826	08/26/2025	4	40.288593	-104.873987	NC	4.7
32225-FL-07-S-SO-6-20250826	08/26/2025	6	40.288593	-104.873987	NC	3.2
32225-FL-07-W-SO-2-20250826	08/26/2025	2	40.288634	-104.874031	NC	6.2
32225-FL-07-W-SO-4-20250826	08/26/2025	4	40.288634	-104.874031	NC	6.4
32225-FL-07-W-SO-6-20250826	08/26/2025	6	40.288634	-104.874031	NC	6.3
32225-FL-08-SO-4-20250826	08/26/2025	4	40.288277	-104.873889	NC	2.1
32225-FL-08-SO-6-20250826	08/26/2025	6	40.288277	-104.873889	NC	4.0
32225-FL-08-E-SO-2-20250826	08/26/2025	2	40.288277	-104.873839	NC	4.4
32225-FL-08-E-SO-4-20250826	08/26/2025	4	40.288277	-104.873839	NC	5.1
32225-FL-08-E-SO-6-20250826	08/26/2025	6	40.288277	-104.873839	NC	3.9
32225-FL-08-N-SO-2-20250826	08/26/2025	2	40.288320	-104.873890	NC	1.9
32225-FL-08-N-SO-4-20250826	08/26/2025	4	40.288320	-104.873890	NC	1.5
32225-FL-08-N-SO-6-20250826	08/26/2025	6	40.288320	-104.873890	NC	4.1
32225-FL-08-S-SO-2-20250826	08/26/2025	2	40.288235	-104.873891	NC	3.3
32225-FL-08-S-SO-4-20250826	08/26/2025	4	40.288235	-104.873891	NC	5.5

TABLE 1
FIELD DATA SUMMARY TABLE
NOBLE ENERGY, INC. 100322
GOLLNER O27-02, WELD COUNTY, COLORADO
REM # 32225



Sample ID	Sample Date	Depth (ft. bgs)	GPS Data ¹ Latitude/Longitude		PDOP Value	VOC Concentration ² (ppm)
32225-FL-08-S-SO-6-20250826	08/26/2025	6	40.288235	-104.873891	NC	3.1
32225-FL-08-W-SO-2-20250826	08/26/2025	2	40.288277	-104.873937	NC	4.6
32225-FL-08-W-SO-4-20250826	08/26/2025	4	40.288277	-104.873937	NC	4.1
32225-FL-08-W-SO-6-20250826	08/26/2025	6	40.288277	-104.873937	NC	3.6
32225-FL-09-SO-4-20250826	08/26/2025	4	40.288024	-104.873759	NC	4.6
32225-FL-10-SO-4-20250826	08/26/2025	4	40.288013	-104.872803	NC	3.7
32225-FL-11-SO-4-20250826	08/26/2025	4	40.288040	-104.872045	NC	5.2
32225-FL-12-SO-4-20250826	08/26/2025	4	40.288089	-104.871953	NC	4.8
32225-FL-13-SO-4-20250826	08/26/2025	4	40.288822	-104.871905	NC	1.4
<i>Background Soil Samples</i>						
BKG01@5	03/04/2024	5	40.289668	-104.875339	NC	NM
Background-01 @ 2'	03/20/2024	2	40.289163	-104.874218	NC	1.6
32225-BG-01-4-20240919	09/19/2024	4	40.289864	-104.874617	NC	0.0
32225-BG-02-4-20240919	09/19/2024	4	40.289524	-104.873779	NC	0.0
32225-BG-03-4-20240919	09/19/2024	4	40.288601	-104.873537	NC	0.0
32225-BG-04-4-20240919	09/19/2024	4	40.287966	-104.873998	NC	0.0
32225-BG-05-4-20240919	09/19/2024	4	40.287519	-104.873596	NC	0.0
32225-BG-08-SO-4-20250826	08/26/2025	4	40.289755	-104.874933	NC	6.0
32225-BG-08-SO-6-20250826	08/26/2025	6	40.289755	-104.874933	NC	5.1
32225-BG-09-SO-4-20250826	08/26/2025	4	40.288277	-104.873839	NC	3.3
32225-BG-09-SO-6-20250826	08/26/2025	6	40.288277	-104.873839	NC	3.0
32225-BG-10-SO-4-20250826	08/26/2025	4	40.288527	-104.872124	NC	2.0
32225-BG-10-SO-6-20250826	08/26/2025	6	40.288527	-104.872124	NC	5.4

Notes:

1. Global Positioning System (GPS) data is provided in decimal degrees using North American Datum (NAD) 83 UTM Zone 13 North.

2. Volatile organic compound (VOC) concentrations are measured in the field using a photoionization detector (PID).

PDOP = Position Dilution of Precision

ppm = Parts per million

ft. = Feet

bgs = Below ground surface

NC = Not collected

NA = Not analyzed

Source material characterization sample, excavated and transported off site for disposal.

Material excavated and transported off site for disposal.

TABLE 2
SUMMARY OF VOLATILE ORGANIC SOIL CHEMISTRY DATA
NOBLE ENERGY, INC. 100322
GOLLNER O27-02, WELD COUNTY, COLORADO
REM # 32225



Sample ID	Sample Date	Depth (ft. bgs)	Benzene (mg/kg)	Toluene (mg/kg)	Ethyl-Benzene (mg/kg)	Xylenes (mg/kg)	1,2,4-Trimethyl-Benzene (mg/kg)	1,3,5-Trimethyl-Benzene (mg/kg)	Naphthalene (mg/kg)	TPH (mg/kg)	TPH GRO (mg/kg)	TPH DRO (mg/kg)	TPH ORO (mg/kg)
ECMC Table 915-1 Limits (Residential SSL)			1.2	490	5.8	58	30	27	2	500	500**		
ECMC Table 915-1 Limits (Protection of Groundwater SSL)			0.0026	0.69	0.78	9.9	0.0081	0.0087	0.0038	500	500**		
<i>Wellhead Decommissioning</i>													
WH01@6	03/04/2024	6	<0.00200	<0.00200	<0.00200	<0.00200	<0.00200	<0.00200	<0.002	<125.200	<0.200	<25.0	<100
FLR01@4	03/04/2024	4	<0.00200	<0.00200	<0.00200	<0.00200	<0.00200	<0.00200	<0.002	<125.200	<0.200	<25.0	<100
<i>Flowline Decommissioning</i>													
FL-SS-01 @ 4'	03/19/2024	4	<0.00200	<0.00200	<0.00200	<0.00200	<0.00200	<0.00200	<0.00380	<125.200	<0.200	<25.0	<100
FL-SS-03 @ 4'	03/20/2025	4	<0.00200	<0.00200	<0.00200	<0.00200	<0.00200	<0.00200	<0.00380	<125.200	<0.200	<25.0	<100
FL-SS-04 @ 4'	03/20/2025	4	<0.00200	<0.00200	<0.00200	<0.00200	<0.00200	<0.00200	<0.00380	<125.200	<0.200	<25.0	<100
FL-SS-08 @ 4'	03/21/2024	4	<0.00200	<0.00200	<0.00200	<0.00200	<0.00200	<0.00200	<0.00380	<125.200	<0.200	<25.0	<100
<i>1Q25 Site Investigation Samples</i>													
WH01@6.5	3/6/2025	6.5	<0.00200	<0.00200	<0.00200	<0.00200	<0.00200	<0.00200	<0.00392	<125.200	<0.200	<25.0	<100
<i>3Q25 Site Investigation Samples</i>													
32225-FL-05-SO-4-20250826	08/26/2025	4	<0.002	<0.002	<0.002	<0.002	<0.002	<0.002	<0.002	<141.426	<0.226	<28.2	<113
32225-FL-05-SO-6-20250826	08/26/2025	6	<0.002	<0.002	<0.002	<0.002	<0.002	<0.002	<0.002	<141.425	<0.225	<28.2	<113
32225-FL-05-E-SO-2-20250826	08/26/2025	2	<0.002	<0.002	<0.002	<0.002	<0.002	<0.002	<0.002	<142.627	<0.227	<28.4	<114
32225-FL-05-E-SO-4-20250826	08/26/2025	4	<0.002	<0.002	<0.002	<0.002	<0.002	<0.002	<0.002	<142.728	<0.228	<28.5	<114
32225-FL-05-E-SO-6-20250826	08/26/2025	6	<0.002	<0.002	<0.002	<0.002	<0.002	<0.002	<0.002	<139.023	<0.223	<27.8	<111
32225-FL-05-N-SO-2-20250826	08/26/2025	2	<0.002	<0.002	<0.002	<0.002	<0.002	<0.002	<0.002	<144.03	<0.230	<28.8	<115
32225-FL-05-N-SO-4-20250826	08/26/2025	4	<0.002	<0.002	<0.002	<0.002	<0.002	<0.002	<0.002	<144.03	<0.230	<28.8	<115
32225-FL-05-N-SO-6-20250826	08/26/2025	6	<0.002	<0.002	<0.002	<0.002	<0.002	<0.002	<0.002	<148.937	<0.237	<29.7	<119
32225-FL-05-S-SO-2-20250826	08/26/2025	2	<0.002	<0.002	<0.002	<0.002	<0.002	<0.002	<0.002	<142.627	<0.227	<28.4	<114
32225-FL-05-S-SO-4-20250826	08/26/2025	4	<0.002	<0.002	<0.002	<0.002	<0.002	<0.002	<0.002	<140.224	<0.224	<28.0	<112
32225-FL-05-S-SO-6-20250826	08/26/2025	6	<0.002	<0.002	<0.002	<0.002	<0.002	<0.002	<0.002	<143.929	<0.229	<28.7	<115
32225-FL-05-W-SO-2-20250826	08/26/2025	2	<0.002	<0.002	<0.002	<0.002	<0.002	<0.002	<0.002	<142.829	<0.229	<28.6	<114
32225-FL-05-W-SO-4-20250826	08/26/2025	4	<0.002	<0.002	<0.002	<0.002	<0.002	<0.002	<0.002	<143.93	<0.230	<28.7	<115
32225-FL-05-W-SO-6-20250826	08/26/2025	6	<0.002	<0.002	<0.002	<0.002	<0.002	<0.002	<0.002	<141.527	<0.227	<28.3	<113
32225-FL-06-SO-4-20250826	08/26/2025	4	<0.002	<0.002	<0.002	<0.002	<0.002	<0.002	<0.002	<142.728	<0.228	<28.5	<114
32225-FL-07-SO-4-20250826	08/26/2025	4	<0.002	<0.002	<0.002	<0.002	<0.002	<0.002	<0.002	<141.627	<0.227	<28.4	<113
32225-FL-07-SO-6-20250826	08/26/2025	6	<0.002	<0.002	<0.002	<0.002	<0.002	<0.002	<0.002	<141.527	<0.227	<28.3	<113
32225-FL-07-E-SO-2-20250826	08/26/2025	2	<0.002	<0.002	<0.002	<0.002	<0.002	<0.002	<0.002	<139.023	<0.223	<27.8	<111
32225-FL-07-E-SO-4-20250826	08/26/2025	4	<0.002	<0.002	<0.002	<0.002	<0.002	<0.002	<0.002	<142.627	<0.227	<28.4	<114
32225-FL-07-E-SO-6-20250826	08/26/2025	6	<0.002	<0.002	<0.002	<0.002	<0.002	<0.002	<0.002	<145.131	<0.231	<28.9	<116
32225-FL-07-N-SO-2-20250826	08/26/2025	2	<0.002	<0.002	<0.002	<0.002	<0.002	<0.002	<0.002	<145.131	<0.231	<28.9	<116
32225-FL-07-N-SO-4-20250826	08/26/2025	4	<0.002	<0.002	<0.002	<0.002	<0.002	<0.002	<0.002	<142.627	<0.227	<28.4	<114
32225-FL-07-N-SO-6-20250826	08/26/2025	6	<0.002	<0.002	<0.002	<0.002	<0.002	<0.002	<0.002	<142.728	<0.228	<28.5	<114
32225-FL-07-S-SO-2-20250826	08/26/2025	2	<0.002	<0.002	<0.002	<0.002	<0.002	<0.002	<0.002	<145.232	<0.232	<29.0	<116
32225-FL-07-S-SO-4-20250826	08/26/2025	4	<0.002	<0.002	<0.002	<0.002	<0.002	<0.002	<0.002	<145.131	<0.231	<28.9	<116

TABLE 2
SUMMARY OF VOLATILE ORGANIC SOIL CHEMISTRY DATA
NOBLE ENERGY, INC. 100322
GOLLNER O27-02, WELD COUNTY, COLORADO
REM # 32225



Sample ID	Sample Date	Depth (ft. bgs)	Benzene (mg/kg)	Toluene (mg/kg)	Ethyl-Benzene (mg/kg)	Xylenes (mg/kg)	1,2,4-Trimethyl-Benzene (mg/kg)	1,3,5-Trimethyl-Benzene (mg/kg)	Naphthalene (mg/kg)	TPH (mg/kg)	TPH GRO (mg/kg)	TPH DRO (mg/kg)	TPH ORO (mg/kg)
ECMC Table 915-1 Limits (Residential SSL)			1.2	490	5.8	58	30	27	2	500	500**		
ECMC Table 915-1 Limits (Protection of Groundwater SSL)			0.0026	0.69	0.78	9.9	0.0081	0.0087	0.0038	500	500**		
32225-FL-07-S-SO-6-20250826	08/26/2025	6	<0.002	<0.002	<0.002	<0.002	<0.002	<0.002	<0.002	<140.325	<0.225	<28.1	<112
32225-FL-07-W-SO-2-20250826	08/26/2025	2	<0.002	<0.002	<0.002	<0.002	<0.002	<0.002	<0.002	<141.527	<0.227	<28.3	<113
32225-FL-07-W-SO-4-20250826	08/26/2025	4	<0.002	<0.002	<0.002	<0.002	<0.002	<0.002	<0.002	<143.829	<0.229	<28.6	<115
32225-FL-07-W-SO-6-20250826	08/26/2025	6	<0.002	<0.002	<0.002	<0.002	<0.002	<0.002	<0.002	<144.131	<0.231	<28.9	<115
32225-FL-08-SO-4-20250826	08/26/2025	4	<0.002	<0.002	<0.002	<0.002	<0.002	<0.002	<0.002	<147.736	<0.236	<29.5	<118
32225-FL-08-SO-6-20250826	08/26/2025	6	<0.002	<0.002	<0.002	<0.002	<0.002	<0.002	<0.002	<146.433	<0.233	<29.2	<117
32225-FL-08-E-SO-2-20250826	08/26/2025	2	<0.002	<0.002	<0.002	<0.002	<0.002	<0.002	<0.002	<143.93	<0.230	<28.7	<115
32225-FL-08-E-SO-4-20250826	08/26/2025	4	<0.002	<0.002	<0.002	<0.002	<0.002	<0.002	<0.002	<141.425	<0.225	<28.2	<113
32225-FL-08-E-SO-6-20250826	08/26/2025	6	<0.002	<0.002	<0.002	<0.002	<0.002	<0.002	<0.002	<140.123	<0.223	<27.9	<112
32225-FL-08-N-SO-2-20250826	08/26/2025	2	<0.002	<0.002	<0.002	<0.002	<0.002	<0.002	<0.002	<147.736	<0.236	<29.5	<118
32225-FL-08-N-SO-4-20250826	08/26/2025	4	<0.002	<0.002	<0.002	<0.002	<0.002	<0.002	<0.002	<146.534	<0.234	<29.3	<117
32225-FL-08-N-SO-6-20250826	08/26/2025	6	<0.002	<0.002	<0.002	<0.002	<0.002	<0.002	<0.002	<147.635	<0.235	<29.4	<118
32225-FL-08-S-SO-2-20250826	08/26/2025	2	<0.002	<0.002	<0.002	<0.002	<0.002	<0.002	<0.002	<147.736	<0.236	<29.5	<118
32225-FL-08-S-SO-4-20250826	08/26/2025	4	<0.002	<0.002	<0.002	<0.002	<0.002	<0.002	<0.002	<146.434	<0.234	<29.2	<117
32225-FL-08-S-SO-6-20250826	08/26/2025	6	<0.002	<0.002	<0.002	<0.002	<0.002	<0.002	<0.002	<144.031	<0.231	<28.8	<115
32225-FL-08-W-SO-2-20250826	08/26/2025	2	<0.002	<0.002	<0.002	<0.002	<0.002	<0.002	<0.002	<144.131	<0.231	<28.9	<115
32225-FL-08-W-SO-4-20250826	08/26/2025	4	<0.002	<0.002	<0.002	<0.002	<0.002	<0.002	<0.002	<140.325	<0.225	<28.1	<112
32225-FL-08-W-SO-6-20250826	08/26/2025	6	<0.002	<0.002	<0.002	<0.002	<0.002	<0.002	<0.002	<143.93	<0.230	<28.7	<115
32225-FL-09-SO-4-20250826	08/26/2025	4	<0.002	<0.002	<0.002	<0.002	<0.002	<0.002	<0.002	<146.433	<0.233	<29.2	<117
32225-FL-10-SO-4-20250826	08/26/2025	4	<0.002	<0.002	<0.002	<0.002	<0.002	<0.002	<0.002	<136.518	<0.218	<27.3	<109
32225-FL-11-SO-4-20250826	08/26/2025	4	<0.002	<0.002	<0.002	<0.002	<0.002	<0.002	<0.002	<136.418	<0.218	<27.2	<109
32225-FL-12-SO-4-20250826	08/26/2025	4	<0.002	<0.002	<0.002	<0.002	<0.002	<0.002	<0.002	<135.216	<0.216	<27.0	<108
32225-FL-13-SO-4-20250826	08/26/2025	4	<0.002	<0.002	<0.002	<0.002	<0.002	<0.002	<0.002	<143.929	<0.229	<28.7	<115

Notes:

1. **Bold** values exceed the ECMC Table 915-1 limit(s).
2. Red & blue highlighted soil analytical values indicate an exceedance of the referenced soil screening level (SSL).
3. ** Summation of GRO+DRO+ORO must be less than 500 mg/kg.

ECMC = Energy and Carbon Management Commission

(<) = Analytical result is less than the indicated laboratory reporting limit.

TPH-GRO = Total petroleum hydrocarbons - gasoline range organics

TPH-DRO = Total petroleum hydrocarbons - diesel range organics

TPH-ORO = Total petroleum hydrocarbons - oil range organics

mg/kg = Milligrams per kilogram

ft. = Feet

bgs = Below ground surface

NA = Not analyzed

Source material characterization sample, excavated and transported off site for disposal.

Material excavated and transported off site for disposal.

TABLE 3
SUMMARY OF POLYCYCLIC AROMATIC HYDROCARBON SOIL CHEMISTRY DATA
NOBLE ENERGY, INC. 100322
GOLLNER O27-02, WELD COUNTY, COLORADO
REM # 32225



Sample ID	Sample Date	Depth (ft. bgs)	Acenaphthene (mg/kg)	Anthracene (mg/kg)	Benzo (a) Anthracene (mg/kg)	Benzo (a) Pyrene (mg/kg)	Benzo (b) Fluoranthene (mg/kg)	Benzo (k) Fluoranthene (mg/kg)	Chrysene (mg/kg)	Dibenzo (a,h) Anthracene (mg/kg)	Fluoranthene (mg/kg)	Fluorene (mg/kg)	Indeno (1,2,3-cd) Pyrene (mg/kg)	Pyrene (mg/kg)	1-Methyl - Naphthalene (mg/kg)	2-Methyl - Naphthalene (mg/kg)
ECMC Table 915-1 Limits (Residential SSL)			360	1800	1.1	0.11	1.1	11	110	0.11	240	240	1.1	180	18	24
ECMC Table 915-1 Limits (Protection of Groundwater SSL)			0.55	5.8	0.011	0.24	0.3	2.9	9	0.096	8.9	0.54	0.98	1.3	0.006	0.019
32225-FL-08-N-SO-2-20250826	08/26/2025	2	<0.024	<0.024	<0.006	<0.024	<0.024	<0.024	<0.024	<0.024	<0.024	<0.024	<0.024	<0.024	<0.002	<0.002
32225-FL-08-N-SO-4-20250826	08/26/2025	4	<0.023	<0.023	<0.006	<0.023	<0.023	<0.023	<0.023	<0.023	<0.023	<0.023	<0.023	<0.023	<0.002	<0.002
32225-FL-08-N-SO-6-20250826	08/26/2025	6	<0.024	<0.024	<0.006	<0.024	<0.024	<0.024	<0.024	<0.024	<0.024	<0.024	<0.024	<0.024	<0.002	<0.002
32225-FL-08-S-SO-2-20250826	08/26/2025	2	<0.024	<0.024	<0.006	<0.024	<0.024	<0.024	<0.024	<0.024	<0.024	<0.024	<0.024	<0.024	<0.002	<0.002
32225-FL-08-S-SO-4-20250826	08/26/2025	4	<0.023	<0.023	<0.006	<0.023	<0.023	<0.023	<0.023	<0.023	<0.023	<0.023	<0.023	<0.023	<0.002	<0.002
32225-FL-08-S-SO-6-20250826	08/26/2025	6	<0.023	<0.023	<0.006	<0.023	<0.023	<0.023	<0.023	<0.023	<0.023	<0.023	<0.023	<0.023	<0.002	<0.002
32225-FL-08-W-SO-2-20250826	08/26/2025	2	<0.023	<0.023	<0.006	<0.023	<0.023	<0.023	<0.023	<0.023	<0.023	<0.023	<0.023	<0.023	<0.002	<0.002
32225-FL-08-W-SO-4-20250826	08/26/2025	4	<0.022	<0.022	<0.006	<0.022	<0.022	<0.022	<0.022	<0.022	<0.022	<0.022	<0.022	<0.022	<0.002	<0.002
32225-FL-08-W-SO-6-20250826	08/26/2025	6	<0.023	<0.023	<0.006	<0.023	<0.023	<0.023	<0.023	<0.023	<0.023	<0.023	<0.023	<0.023	<0.002	<0.002
32225-FL-09-SO-4-20250826	08/26/2025	4	<0.023	<0.023	<0.006	<0.023	<0.023	<0.023	<0.023	<0.023	<0.023	<0.023	<0.023	<0.023	<0.002	<0.002
32225-FL-10-SO-4-20250826	08/26/2025	4	<0.022	<0.022	<0.005	<0.022	<0.022	<0.022	<0.022	<0.022	<0.022	<0.022	<0.022	<0.022	<0.002	<0.002
32225-FL-11-SO-4-20250826	08/26/2025	4	<0.022	<0.022	<0.005	<0.022	<0.022	<0.022	<0.022	<0.022	<0.022	<0.022	<0.022	<0.022	<0.002	<0.002
32225-FL-12-SO-4-20250826	08/26/2025	4	<0.022	<0.022	<0.005	<0.022	<0.022	<0.022	<0.022	<0.022	<0.022	<0.022	<0.022	<0.022	<0.002	<0.002
32225-FL-13-SO-4-20250826	08/26/2025	4	<0.023	<0.023	<0.006	<0.023	<0.023	<0.023	<0.023	<0.023	<0.023	<0.023	<0.023	<0.023	<0.002	<0.002

Notes:

- 1. Bold values** exceed the ECMC Table 915-1 limit(s).
 - Red & blue highlighted soil analytical values indicate an exceedance of the referenced soil screening level (SSL).
 - * Indicates laboratory minimum detection limit in excess of SSL.
- ECMC = Energy and Carbon Management Commission
(<) = Analytical result is less than the indicated laboratory reporting limit.
mg/kg = Milligrams per kilogram
ft. = Feet
bgs = Below ground surface
NA = Not analyzed
- Source material characterization sample, excavated and transported off site for disposal.
Material excavated and transported off site for disposal.

TABLE 4
SUMMARY OF SOIL SUITABILITY FOR RECLAMATION
NOBLE ENERGY, INC. 100322
GOLLNER O27-02, WELD COUNTY, COLORADO
REM # 32225



Sample ID	Sample Date	Depth (ft. bgs)	pH (Standard Units)	EC (mmhos/cm)	SAR (Standard Units)	Boron (mg/L)
ECMC Table 915-1 Soil Suitability Limits			6 - 8.3	<4	<6	2
<i>Wellhead Decommissioning</i>						
WH01@6	03/04/2024	6	8.20	0.510	0.417	0.541
FLR01@4	03/04/2024	4	8.25	0.363	0.300	0.323
<i>Flowline Decommissioning</i>						
FL-SS-01 @ 4'	03/19/2024	4	8.15	0.510	0.271	0.415
FL-SS-03 @ 4'	03/20/2025	4	8.35	0.592	0.379	0.236
FL-SS-04 @ 4'	03/20/2025	4	8.12	0.382	0.225	0.169
FL-SS-08 @ 4'	03/21/2024	4	8.23	0.712	0.490	0.261
FL-SS-10 @ 4'	03/21/2024	4	8.31	0.664	0.515	0.214
<i>3Q24 Site Investigation Samples</i>						
32225-FL-01-E-2-20240920	09/20/2024	2	8.8	NA	NA	NA
32225-FL-01-E-4-20240920	09/20/2024	4	8.8	NA	NA	NA
32225-FL-01-E-6-20240920	09/20/2024	6	8.9	NA	NA	NA
32225-FL-01-N-2-20240920	09/20/2024	2	8.7	NA	NA	NA
32225-FL-01-N-4-20240920	09/20/2024	4	8.7	NA	NA	NA
32225-FL-01-N-6-20240920	09/20/2024	6	8.7	NA	NA	NA
32225-FL-01-S-2-20240920	09/20/2024	2	8.7	NA	NA	NA
32225-FL-01-S-4-20240920	09/20/2024	4	8.7	NA	NA	NA
32225-FL-01-S-6-20240920	09/20/2024	6	8.2	NA	NA	NA
32225-FL-01-W-2-20240920	09/20/2024	2	8.7	NA	NA	NA
32225-FL-01-W-4-20240920	09/20/2024	4	8.8	NA	NA	NA
32225-FL-01-W-6-20240920	09/20/2024	6	8.8	NA	NA	NA
32225-FL-03-E-2-20240920	09/20/2024	2	8.4	NA	NA	NA
32225-FL-03-E-4-20240920	09/20/2024	4	8.6	NA	NA	NA
32225-FL-03-E-6-20240920	09/20/2024	6	8.6	NA	NA	NA
32225-FL-03-N-2-20240920	09/20/2024	2	8.4	NA	NA	NA
32225-FL-03-N-4-20240920	09/20/2024	4	8.5	NA	NA	NA
32225-FL-03-N-6-20240920	09/20/2024	6	8.6	NA	NA	NA
32225-FL-03-S-2-20240920	09/20/2024	2	8.7	NA	NA	NA
32225-FL-03-S-4-20240920	09/20/2024	4	8.9	NA	NA	NA
32225-FL-03-S-6-20240920	09/20/2024	6	8.8	NA	NA	NA
32225-FL-03-W-2-20240920	09/20/2024	2	8.5	NA	NA	NA
32225-FL-03-W-4-20240920	09/20/2024	4	8.7	NA	NA	NA
32225-FL-03-W-6-20240920	09/20/2024	6	8.6	NA	NA	NA
<i>1Q25 Site Investigation Samples</i>						
WH01@6.5	03/06/2025	6.5	8.33	0.388	0.374	0.378
<i>3Q25 Site Investigation Samples</i>						
32225-FL-05-SO-4-20250826	08/26/2025	4	8.18	0.643	0.246	0.493
32225-FL-05-SO-6-20250826	08/26/2025	6	8.29	0.558	0.293	0.230

TABLE 4
SUMMARY OF SOIL SUITABILITY FOR RECLAMATION
NOBLE ENERGY, INC. 100322
GOLLNER O27-02, WELD COUNTY, COLORADO
REM # 32225



Sample ID	Sample Date	Depth (ft. bgs)	pH (Standard Units)	EC (mmhos/cm)	SAR (Standard Units)	Boron (mg/L)
ECMC Table 915-1 Soil Suitability Limits			6 - 8.3	<4	<6	2
32225-FL-05-E-SO-2-20250826	08/26/2025	2	8.28	0.536	0.554	0.144
32225-FL-05-E-SO-4-20250826	08/26/2025	4	8.19	0.929	0.509	0.231
32225-FL-05-E-SO-6-20250826	08/26/2025	6	8.20	0.862	0.439	0.358
32225-FL-05-N-SO-2-20250826	08/26/2025	2	8.23	0.834	0.421	0.267
32225-FL-05-N-SO-4-20250826	08/26/2025	4	8.29	0.826	0.447	0.287
32225-FL-05-N-SO-6-20250826	08/26/2025	6	8.33	0.594	0.357	0.382
32225-FL-05-S-SO-2-20250826	08/26/2025	2	8.26	0.753	0.48	0.291
32225-FL-05-S-SO-4-20250826	08/26/2025	4	8.38	0.672	0.728	0.424
32225-FL-05-S-SO-6-20250826	08/26/2025	6	8.33	0.639	0.287	0.287
32225-FL-05-W-SO-2-20250826	08/26/2025	2	8.22	0.409	0.707	0.243
32225-FL-05-W-SO-4-20250826	08/26/2025	4	8.24	1.18	0.405	0.344
32225-FL-05-W-SO-6-20250826	08/26/2025	6	8.34	0.679	0.262	0.194
32225-FL-06-SO-4-20250826	08/26/2025	4	8.17	0.668	0.278	0.381
32225-FL-07-SO-4-20250826	08/26/2025	4	8.36	0.714	0.700	0.456
32225-FL-07-SO-6-20250826	08/26/2025	6	8.33	0.363	0.428	0.512
32225-FL-07-E-SO-2-20250826	08/26/2025	2	8.34	0.298	0.121	0.294
32225-FL-07-E-SO-4-20250826	08/26/2025	4	8.41	0.349	0.222	0.230
32225-FL-07-E-SO-6-20250826	08/26/2025	6	8.38	0.348	0.273	0.313
32225-FL-07-N-SO-2-20250826	08/26/2025	2	8.16	1.22	0.946	0.495
32225-FL-07-N-SO-4-20250826	08/26/2025	4	8.32	0.882	0.865	0.579
32225-FL-07-N-SO-6-20250826	08/26/2025	6	8.38	0.409	0.408	0.454
32225-FL-07-S-SO-2-20250826	08/26/2025	2	8.16	1.42	0.694	0.363
32225-FL-07-S-SO-4-20250826	08/26/2025	4	8.43	0.529	0.567	0.334
32225-FL-07-S-SO-6-20250826	08/26/2025	6	8.38	0.355	0.289	0.472
32225-FL-07-W-SO-2-20250826	08/26/2025	2	8.23	0.611	0.227	0.211
32225-FL-07-W-SO-4-20250826	08/26/2025	4	8.31	0.523	0.284	0.257
32225-FL-07-W-SO-6-20250826	08/26/2025	6	8.31	0.389	0.221	0.307
32225-FL-08-SO-4-20250826	08/26/2025	4	8.15	0.961	0.515	0.501
32225-FL-08-SO-6-20250826	08/26/2025	6	8.29	0.443	0.262	0.300
32225-FL-08-E-SO-2-20250826	08/26/2025	2	8.30	0.618	0.378	0.478
32225-FL-08-E-SO-4-20250826	08/26/2025	4	8.38	0.600	0.589	0.458
32225-FL-08-E-SO-6-20250826	08/26/2025	6	8.41	0.386	0.351	0.527
32225-FL-08-N-SO-2-20250826	08/26/2025	2	8.17	0.756	1.51	0.471
32225-FL-08-N-SO-4-20250826	08/26/2025	4	8.40	0.672	0.629	0.305
32225-FL-08-N-SO-6-20250826	08/26/2025	6	8.38	0.387	0.363	0.360
32225-FL-08-S-SO-2-20250826	08/26/2025	2	8.35	0.421	0.459	0.494
32225-FL-08-S-SO-4-20250826	08/26/2025	4	8.28	0.870	0.633	0.189
32225-FL-08-S-SO-6-20250826	08/26/2025	6	8.26	0.596	0.300	0.194
32225-FL-08-W-SO-2-20250826	08/26/2025	2	8.04	0.538	0.250	0.139

TABLE 4
SUMMARY OF SOIL SUITABILITY FOR RECLAMATION
NOBLE ENERGY, INC. 100322
GOLLNER O27-02, WELD COUNTY, COLORADO
REM # 32225



Sample ID	Sample Date	Depth (ft. bgs)	pH (Standard Units)	EC (mmhos/cm)	SAR (Standard Units)	Boron (mg/L)
ECMC Table 915-1 Soil Suitability Limits			6 - 8.3	<4	<6	2
32225-FL-08-W-SO-4-20250826	08/26/2025	4	8.30	0.315	0.269	0.113
32225-FL-08-W-SO-6-20250826	08/26/2025	6	8.29	0.285	0.233	0.182
32225-FL-09-SO-4-20250826	08/26/2025	4	8.36	0.785	0.484	0.469
32225-FL-10-SO-4-20250826	08/26/2025	4	8.29	0.806	1.11	0.939
32225-FL-11-SO-4-20250826	08/26/2025	4	8.46	0.387	0.651	0.476
32225-FL-12-SO-4-20250826	08/26/2025	4	8.40	0.893	0.791	0.539
32225-FL-13-SO-4-20250826	08/26/2025	4	8.40	0.559	0.572	0.359
<i>Invalid Background Samples (Not Used for Background Analysis)</i>						
BKG01@5	03/04/2024	5	8.36	0.345	0.580	0.324
<i>Background Soil Samples</i>						
Background-01 @ 2'	03/20/2025	2	8.29	0.549	0.498	0.269
32225-BG-01-4-20240919	09/19/2024	4	8.7	NA	NA	NA
32225-BG-02-4-20240919	09/19/2024	4	8.7	NA	NA	NA
32225-BG-03-4-20240919	09/19/2024	4	8.7	NA	NA	NA
32225-BG-04-4-20240919	09/19/2024	4	8.7	NA	NA	NA
32225-BG-05-4-20240919	09/19/2024	4	8.9	NA	NA	NA
32225-BG-08-SO-4-20250826	08/26/2025	4	8.36	0.607	0.352	0.656
32225-BG-08-SO-6-20250826	08/26/2025	6	8.36	0.607	0.358	0.515
32225-BG-09-SO-4-20250826	08/26/2025	4	8.18	1.25	0.245	0.554
32225-BG-09-SO-6-20250826	08/26/2025	6	8.40	0.558	0.515	0.949
32225-BG-10-SO-4-20250826	08/26/2025	4	8.45	0.309	0.353	0.399
32225-BG-10-SO-6-20250826	08/26/2025	6	8.44	0.396	0.420	0.469
Maximum Background Concentration			8.9	-	-	-

Notes:

1. **Bold** faced values exceed the ECMC Table 915-1 limit(s), but are within background concentrations.
2. **Bold** faced values exceed the ECMC Table 915-1 limit(s) and native background concentrations.
3. Brown highlighted soil analytical values indicate a regulatory exceedance.

ECMC = Energy and Carbon Management Commission

(<) = Analytical result is less than the indicated laboratory reporting limit.

mg/L = Milligrams per liter

ft. = Feet

bgs = Below ground surface

NA = Not analyzed

EC = Electrical conductivity

SAR = Sodium adsorption ratio

TABLE 5
SUMMARY OF METALS IN SOIL CHEMISTRY DATA
NOBLE ENERGY, INC. 100322
GOLLNER O27-02, WELD COUNTY, COLORADO
REM # 32225



Sample ID	Sample Date	Depth (ft. bgs)	Arsenic (mg/kg)	Barium (mg/kg)	Cadmium (mg/kg)	Chromium (VI) ⁶ (mg/kg)	Copper (mg/kg)	Lead (mg/kg)	Nickel (mg/kg)	Selenium (mg/kg)	Silver (mg/kg)	Zinc (mg/kg)
ECMC Table 915-1 Limits (Residential SSL)			0.68	15000	71	0.3	3100	400	1500	390	390	23000
ECMC Table 915-1 Limits (Protection of Groundwater SSL)			0.29	82	0.38	0.00067	46	14	26	0.26	0.8	370
32225-FL-03-E-4-20240920	09/20/2024	4	NA	209	NA	NA	NA	NA	NA	NA	NA	NA
32225-FL-03-E-6-20240920	09/20/2024	6	NA	236	NA	NA	NA	NA	NA	NA	NA	NA
32225-FL-03-N-2-20240920	09/20/2024	2	NA	134	NA	NA	NA	NA	NA	NA	NA	NA
32225-FL-03-N-4-20240920	09/20/2024	4	NA	317	NA	NA	NA	NA	NA	NA	NA	NA
32225-FL-03-N-6-20240920	09/20/2024	6	NA	141	NA	NA	NA	NA	NA	NA	NA	NA
32225-FL-03-S-2-20240920	09/20/2024	2	NA	173	NA	NA	NA	NA	NA	NA	NA	NA
32225-FL-03-S-4-20240920	09/20/2024	4	NA	171	NA	NA	NA	NA	NA	NA	NA	NA
32225-FL-03-S-6-20240920	09/20/2024	6	NA	91.1	NA	NA	NA	NA	NA	NA	NA	NA
32225-FL-03-W-2-20240920	09/20/2024	2	NA	181	NA	NA	NA	NA	NA	NA	NA	NA
32225-FL-03-W-4-20240920	09/20/2024	4	NA	223	NA	NA	NA	NA	NA	NA	NA	NA
32225-FL-03-W-6-20240920	09/20/2024	6	NA	100	NA	NA	NA	NA	NA	NA	NA	NA
<i>1Q25 Site Investigation Samples</i>												
WH01@6.5	03/06/2025	6.5	5.97	189	0.203	<0.352*	14.1	11.7	15.8	<0.245	<0.0944	55.7
<i>3Q25 Site Investigation Samples</i>												
32225-FL-05-SO-4-20250826	08/26/2025	4	9.35	202	<0.313	0.16*	<37.9	14.4	<21.4	0.425	<0.659	<305
32225-FL-05-SO-6-20250826	08/26/2025	6	8.92	87.4	<0.306	<0.09*	<37.1	<11.3	21.0	<0.198	<0.645	<298
32225-FL-05-E-SO-2-20250826	08/26/2025	2	7.25	185	<0.300	<0.09*	<36.3	12.0	<20.5	0.294	<0.632	<292
32225-FL-05-E-SO-4-20250826	08/26/2025	4	8.76	321	<0.308	<0.09*	<37.3	13.7	<21.1	0.306	<0.649	<300
32225-FL-05-E-SO-6-20250826	08/26/2025	6	16.8	167	<0.293	0.18*	<35.5	13.0	<20.1	0.343	<0.617	<285
32225-FL-05-N-SO-2-20250826	08/26/2025	2	7.39	203	<0.309	0.12*	<37.4	12.1	<21.2	0.390	<0.651	<301
32225-FL-05-N-SO-4-20250826	08/26/2025	4	7.51	204	<0.307	0.15*	<37.2	12.4	<21.0	0.302	<0.647	<299
32225-FL-05-N-SO-6-20250826	08/26/2025	6	7.16	137	<0.288	<0.09*	<34.9	10.8	<19.7	0.260	<0.607	<281
32225-FL-05-S-SO-2-20250826	08/26/2025	2	8.27	186	<0.302	<0.09*	<36.6	13.1	<20.7	0.391	<0.636	<294
32225-FL-05-S-SO-4-20250826	08/26/2025	4	8.46	228	<0.270	<0.09*	<32.7	12.6	18.9	0.300	<0.596	<263
32225-FL-05-S-SO-6-20250826	08/26/2025	6	17.5	118	<0.306	0.10*	<37.0	<11.3	<20.9	0.249	<0.644	<298
32225-FL-05-W-SO-2-20250826	08/26/2025	2	8.75	246	0.303	<0.09*	<35.1	14.0	21.4	0.409	<0.611	<282
32225-FL-05-W-SO-4-20250826	08/26/2025	4	19.2	259	<0.303	0.11*	<36.7	14.5	<20.7	0.607	<0.638	<295
32225-FL-05-W-SO-6-20250826	08/26/2025	6	23.0	96.2	<0.295	<0.09*	<35.7	<10.9	<20.2	0.358	<0.621	<287
32225-FL-06-SO-4-20250826	08/26/2025	4	9.41	205	<0.302	0.18*	<36.5	14.7	<20.6	0.412	<0.635	<294
32225-FL-07-SO-4-20250826	08/26/2025	4	7.32	284	<0.294	<0.09*	<35.6	12.2	<20.1	0.330	<0.619	<286
32225-FL-07-SO-6-20250826	08/26/2025	6	10.4	267	<0.309	0.13*	<37.4	13.3	<21.2	0.312	<0.651	<301
32225-FL-07-E-SO-2-20250826	08/26/2025	2	9.33	228	0.325	0.10*	<36.9	15.0	<20.8	0.434	<0.642	<297

TABLE 5
SUMMARY OF METALS IN SOIL CHEMISTRY DATA
NOBLE ENERGY, INC. 100322
GOLLNER O27-02, WELD COUNTY, COLORADO
REM # 32225



Sample ID	Sample Date	Depth (ft. bgs)	Arsenic (mg/kg)	Barium (mg/kg)	Cadmium (mg/kg)	Chromium (VI) ⁶ (mg/kg)	Copper (mg/kg)	Lead (mg/kg)	Nickel (mg/kg)	Selenium (mg/kg)	Silver (mg/kg)	Zinc (mg/kg)
ECMC Table 915-1 Limits (Residential SSL)			0.68	15000	71	0.3	3100	400	1500	390	390	23000
ECMC Table 915-1 Limits (Protection of Groundwater SSL)			0.29	82	0.38	0.00067	46	14	26	0.26	0.8	370
<i>Background Soil Samples</i>												
Background-01 @ 2'	03/20/2025	2	6.64	152	0.232	<0.244	9.60	9.99	15.7	<0.241	<0.0929	44.1
32225-BG-01-4-20240919	09/19/2024	4	9.69	112	NA	NA	NA	NA	NA	NA	NA	NA
32225-BG-02-4-20240919	09/19/2024	4	5.33	160	NA	NA	NA	NA	NA	NA	NA	NA
32225-BG-03-4-20240919	09/19/2024	4	7.2	123	NA	NA	NA	NA	NA	NA	NA	NA
32225-BG-04-4-20240919	09/19/2024	4	4.58	166	NA	NA	NA	NA	NA	NA	NA	NA
32225-BG-05-4-20240919	09/19/2024	4	5.19	104	NA	NA	NA	NA	NA	NA	NA	NA
32225-BG-08-SO-4-20250826	08/26/2025	4	8.34	184	<0.285	0.15*	<34.5	10.9	<19.5	0.230	<0.599	<277
32225-BG-08-SO-6-20250826	08/26/2025	6	6.96	158	<0.289	<0.09*	<35.0	11.0	<19.8	0.212	<0.608	<280
32225-BG-09-SO-4-20250826	08/26/2025	4	6.58	282	<0.292	<0.09*	<35.4	12.3	<20.0	0.223	<0.615	<285
32225-BG-09-SO-6-20250826	08/26/2025	6	7.44	191	<0.274	<0.09*	<33.2	12.0	<18.8	0.212	<0.577	<267
32225-BG-10-SO-4-20250826	08/26/2025	4	5.92	195	<0.281	<0.08*	<34.0	12.5	<19.2	0.185	<0.591	<273
32225-BG-10-SO-6-20250826	08/26/2025	6	7.05	204	<0.288	0.10*	<34.9	12.4	<19.7	0.198	<0.606	<280
1.25x Maximum Background Concentration			12.1	353	-	0.19	-	15.6	19.6	0.288	-	-

Notes:

1. **Bold** faced values exceed the ECMC Table 915-1 limit(s), but are within 1.25x background concentrations.
2. **Red** faced values exceed the ECMC Table 915-1 limit(s) and native background concentrations.
3. Red & blue highlighted soil analytical values indicate an exceedance of the referenced soil screening level (SSL).
4. Reporting limit used for 1.25 multiplier when all background results for a specific metal are non-detect.
5. * Indicates laboratory minimum detection limit in excess of SSL.
6. Compound falls within the ECMC Table 915-1 footnote 9.

ECMC = Energy & Carbon Management Commission

(<) = Analytical result is less than the indicated laboratory reporting limit.

mg/kg = Milligrams per kilogram

ft. = Feet

bgs = Below ground surface

NA = Not analyzed

Source material characterization sample, excavated and transported off site for disposal.

Material excavated and transported off site for disposal.

82 8/26/25

Chevron RBU Soil Sampling

Weather - 65-70°F, Foggy

Team - D Druant, M Hanna, P Courant, M Ray, M Burt,
 B Armstrong, M Dean, J Pokorny, J Mang, W Carlisle,
 A Martinez, T Delle

0645 - Meet @ Apex, load equipment

0700 - Safety Meeting w/ Dalton & Shilly

0830 - Mob to site

0915 - Arrive on site, site-specific meeting

0925 - Begin sampling

1030 - Finish sampling, clean up

1350 - Demob, mob to Apex

1400 - Arrive @ Apex

unpack equipment

QA/QC samples

1500 - Deliver samples to Endicott

prep for tomorrow

Scale: 1 square = _____

Loc ID	Depth	Time	PID	Soil Description
BG-06'	2			NOT
BG-06	4			JSC
BG-06	6			CLEARED
BG-07	4			
BG-07	6			
BG-08	4	1615	6.0	Brown silt
BG-08	6	1330	5.1	Brown clay
BG-09	4	1200	3.3	Brown silt w/ clay
BG-09	6	1020	3.0	Brown silt w/ clay
BG-10	4	1025	2.0	Brown silt w/ clay
BG-10	6	1035	5.4	Brown silt w/ clay
FL-05	4	1240	5.8	Brown silt w/ clay
FL-05	6	1245	6.5	Brown silt w/ clay
FL-05-W	2	1205	4.1	Brown silt w/ clay
	4	1215	4.4	Brown silt
	6	1220	4.3	Brown silt
FL-05-N	2	1205	4.1	Brown silt w/ clay
	4	1220	4.3	Brown silt w/ clay
	6	1230	3.1	Brown silt
FL-05-S	2	1230	5.4	Brown silt w/ clay
	4	1240	5.6	Brown silt w/ clay
	6	1250	5.0	Brown silt
FL-05-E	2	1300	3.8	Brown silt w/ clay
	4	1310	5.5	Brown silt w/ clay
	6	1315	2.5	Brown silt
FL-06	4	1300	3.4	Brown silt w/ clay

Scale: 1 square = _____

Return the Rain

ole 915-1-
th vor
n as

8450	DEPTH	TIME	P20	Soil Description	Initial
F1-07	4	1110	2.5	Brown silt w/ clay	X
	6	1115	5.4	Brown silt w/ clay	
F1-07E	2	1030	2.4	Brown silt	X
	4	1040	4.3	Brown silt	
	6	1050	4.2	Brown silt w/ clay	
F1-07-N	2	1035	5.0	Brown Clay	X
	4	1045	3.1	Brown silt w/ clay	
	6	1100	3.8	Brown silt w/ clay	
F1-07-S	2	1220	3.7	Brown silt w/ clay	X
	4	1230	4.7	Brown silt w/ clay	
	6	1245	3.2	Brown clay	
F1-07W	2	1110	6.2	Brown Clay	X
	4	1115	6.4	Brown Clay	
	6	1120	6.3	Brown Clay	
F1-08	4	1210	2.1	Brown Clay	X
	6	1225	4.0	Brown Clay	
F1-08-E	2	0930	4.4	Brown silty clay	TD BA
	4	0940	5.1	Brown silty clay	
	6	0955	3.9	Brown silty clay	
F1-08-S	2	0930	3.3	Brown silty clay	JP AM NS
	4	0940	5.5	Brown silty clay	
	6	0950	3.1	Brown silty clay	
F1-08W	2	0930	4.6	Brown silty clay	X
	4	0940	4.1	Brown silty clay	
	6	0950	3.6	Brown silty clay	

M P W

Initial

F1-08-N	2	0935	1.9	Brown silty clay	X
	4	0950	1.5	Brown silty clay	
	6	1000	4.1	Brown silty clay	
F1-09					
F1-09	4	1005	4.6	Brown silty clay	X
F1-10	4	1110	3.7	Brown silt w/ clay	X
F1-11	4	1130	5.2	Brown silty sand	X
F1-12	4	1105	4.8	Brown silt	X
F1-13	4	1000	6.4	Brown silty clay	MB MD



M P W

Scale: 1 square =

East

☀ 123°E (T) ◎ 40.288693, -104.873852 ±3m ▲ 1471m



26 Aug 2025, 9:23:50 AM

North

☉ 358°N (T) ◎ 40.288295, -104.87387 ±1m ▲ 1471m



26 Aug 2025, 9:24:06 AM