



**SECTOR CEMENT BOND
GAMMA RAY
CCL LOG**

Comp. OCCIDENTAL PETROLEUM CORP.
Well MILLER 26-29
Field WATTENBERG
Co. WELD
State COLORADO

Company **OCCIDENTAL PETROLEUM CORP.**
Well **MILLER 26-29**
Field **WATTENBERG**
County **WELD** State **COLORADO**

Location: API # : 05-123-30641
Permanent Datum SEC 29 TWP 3N RGE 66W
Log Measured From KB 15' Elevation 4904'
Drilling Measured From KB Above Perm. Datum
Other Services
NONE

Date of Service	25-JUL-2025
Run Number	ONE
Depth Driller or PBTD	8383'
Depth Logger	1000'
Bottom Log Interval	1000'
Top Log Interval	SURFACE
Open Hole Size	7-7/8"
Type Fluid	H2O
Fluid Level	SURFACE
Fluid Density	N/A
Max. Recorded Temperature	81°F. MAX
Max. Wellhead Pressure	ZERO PSI
Wellhead Connection	7-1/16" 5K
Estimated Cement Top	SEE LOG
Unit Number	L-15
Wireline Size	9/32"
Location	BRIGHTON
Recorded By	J. KOTT
Witnessed By	JARROD BISHOP
Surface Casing	Size 8-5/8" Wt 24# Top SURFACE Bottom 994'
Production Casing	Size 4-1/2" Wt 11.6# Top SURFACE Bottom 8373'
Liner Casing	
Tubing Record	

<<< Fold Here >>>

All interpretations are opinions based on inferences from electrical or other measurements and Ranger Energy Services cannot and does not guarantee the accuracy or correctness of any interpretation, and Ranger Energy Services will not be liable or responsible for any loss, costs, damages, or expenses incurred or sustained by anyone resulting from any interpretation made by any of our officers, agents or employees.

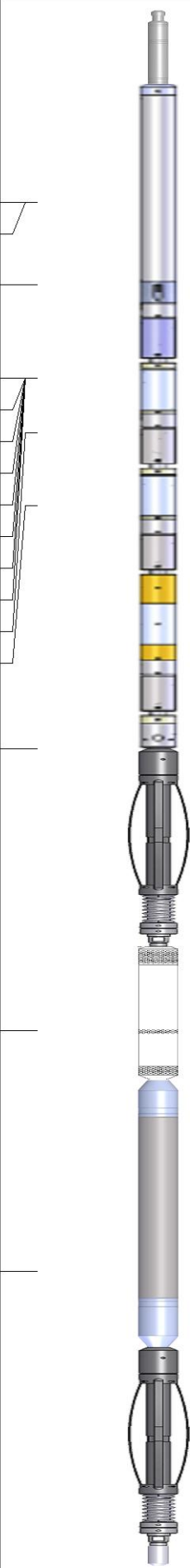
Comments

N/A DENOTES NOT AVAILABLE OR NON-APPLICABLE.
LOG CORRELATED TO KB

THANK YOU FOR USING RANGER ENERGY SERVICES! FIELD TICKET #

Your Ranger Energy Services Crew	Tool Data - Services	Serial Number
Engineer: J. KOTT Operator: C. MARCH Operator: K. LEWIS Operator:		

Quantity	Offset (ft)	Schematic	Description	Length (ft)	O.D. (in)	Weight (lb)
----------	-------------	-----------	-------------	-------------	-----------	-------------

Sensor	Offset (ft)	Schematic	Description	Length (ft)	O.D. (in)	Weight (lb)	
			Cable_Head-1_7/16 Titan 1 7/16" Cable Head	1.02	1.44	3.31	
WVFSYNC	18.73						
WVFCAL	18.73						
TEMP	17.60						
WVFS8	16.31						
WVFS7	16.31			SCBLTEKSECT-275 Temp JS (234RIBT-3020)	9.13	2.75	130.00
WVFS6	16.31			TekCo 2 3/4" 400 Deg. F Sector Tool with Temperature (JS)			
WVFS5	16.31						
WVFS4	16.31						
WVFS3	16.31						
WVFS2	16.31						
WVFS1	16.31						
WVF3FT	15.56						
WVF5FT	14.56						
WVFTEMP	11.23						
				Centralizers-8071-275-200 Tekco 2 3/4" Adjustable Centralizer	2.73	2.75	25.00
CCL	7.35			CCL-275tekco (111) Tekco 2 3/4" 450 Deg. F Rare Earth Magnets	1.83	2.75	33.00
GR	4.04			GR-Tek-Co 2 3/4 (0111) Tekco 2 3/4" 400 Deg. F Logging Gamma Ray	3.67	2.75	40.00
			Centralizers-8071-275-200 Tekco 2 3/4" Adjustable Centralizer	2.73	2.75	25.00	
			Bull_Plug-1_7/16_GO Titan 1 7/16" Female Bull Plug	0.27	1.44	1.00	

Dataset: I15-1077595_oxy_miller 26-29_0512330641_20250725_scbl-gr-ccl.db: field/well/run1/pass6
 Total length: 21.37 ft
 Total weight: 257.31 lb
 O.D.: 2.75 in

Log Variables

DatabaseC:\ProgramData\Warrior\Data\15-1077595_oxy_miller 26-29_0512330641_20250725_scl
Dataset field/well/run1/pass6/_vars_

Top - Bottom

BHTEMP_Src TEMP	BOREID in 7.875	BOTTEMP degF 100	CASEOD in 4.5	CASETHCK in 0.25	CASEWGHT lb/ft 11.6	MAXAMPL mV 81.2	MINAMPL mV 0.7
MINATTN db/ft 0.8	PERFS No	PPT usec 210.8	SRFTEMP degF 70	TDEPTH ft 1000			

Variable Description

BHTEMP_Src : BHTEMP Input Source Selector
BOREID : Borehole I.D.
BOTTEMP : Bottom Hole Temperature
CASEOD : Casing O.D.
CASETHCK : Casing Thickness
CASEWGHT : Casing Weight
MAXAMPL : Maximum Amplitude

MINAMPL : Minimum Amplitude
MINATTN : Minimum Attenuation
PERFS : Perforation Flag
PPT : Predicted Pipe Time
SRFTEMP : Surface Temperature
TDEPTH : Total Depth

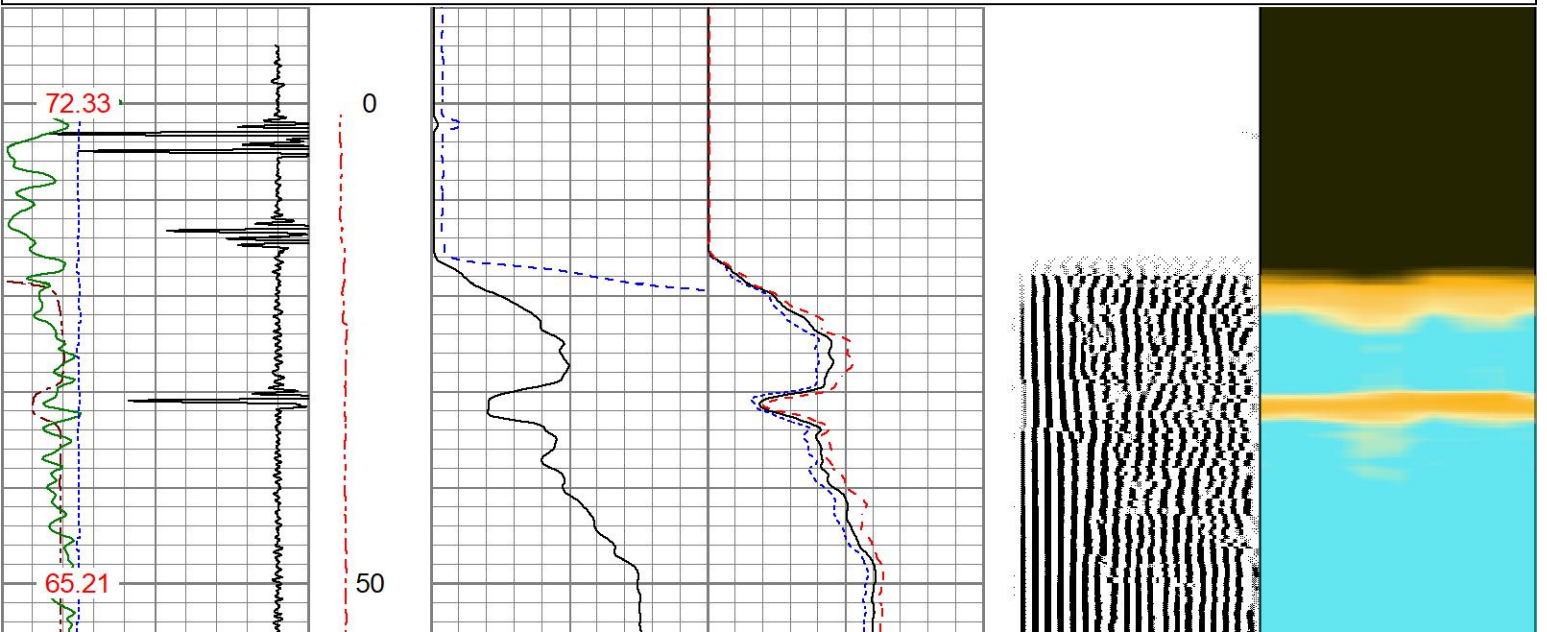


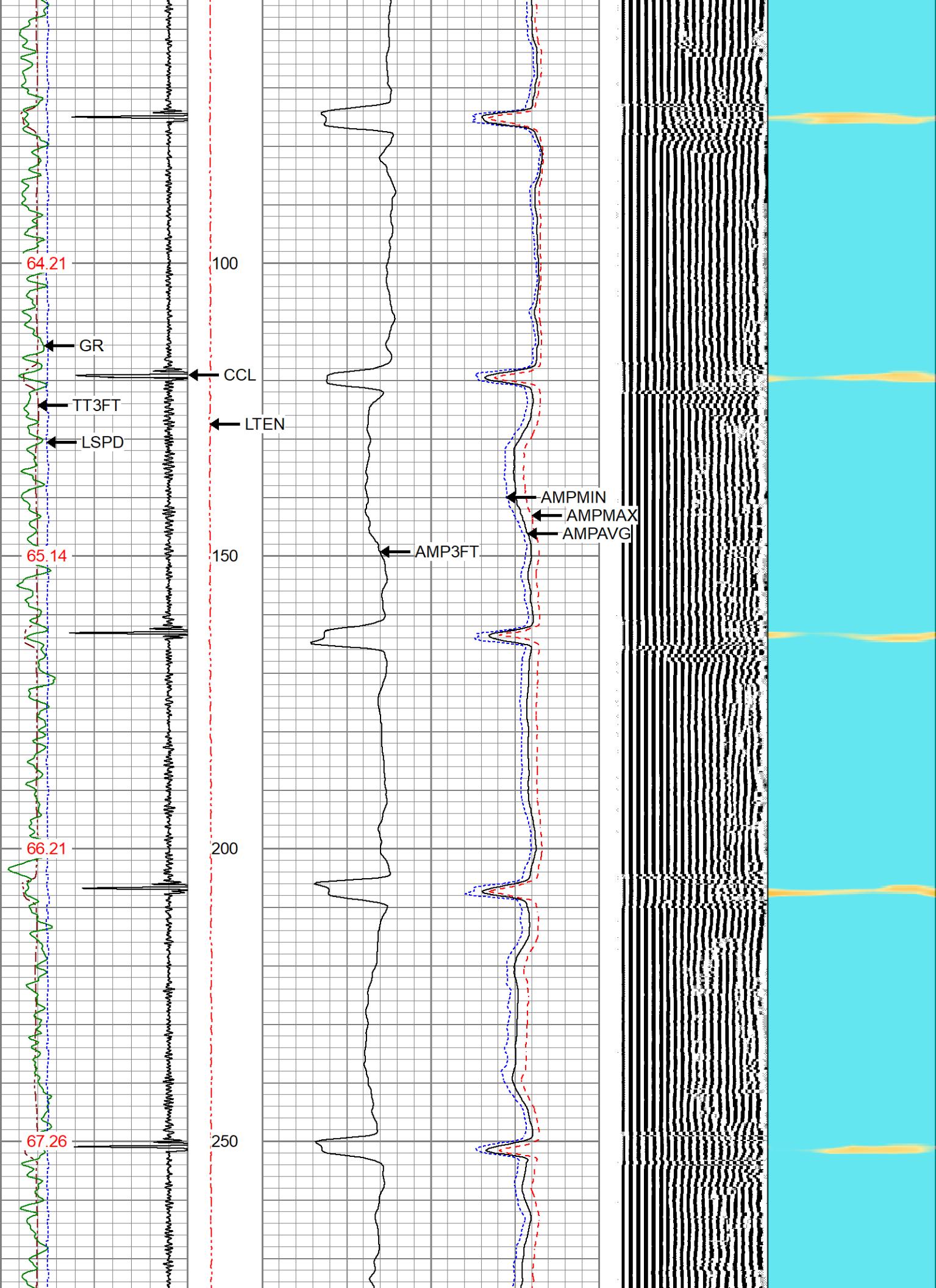
MAIN PASS

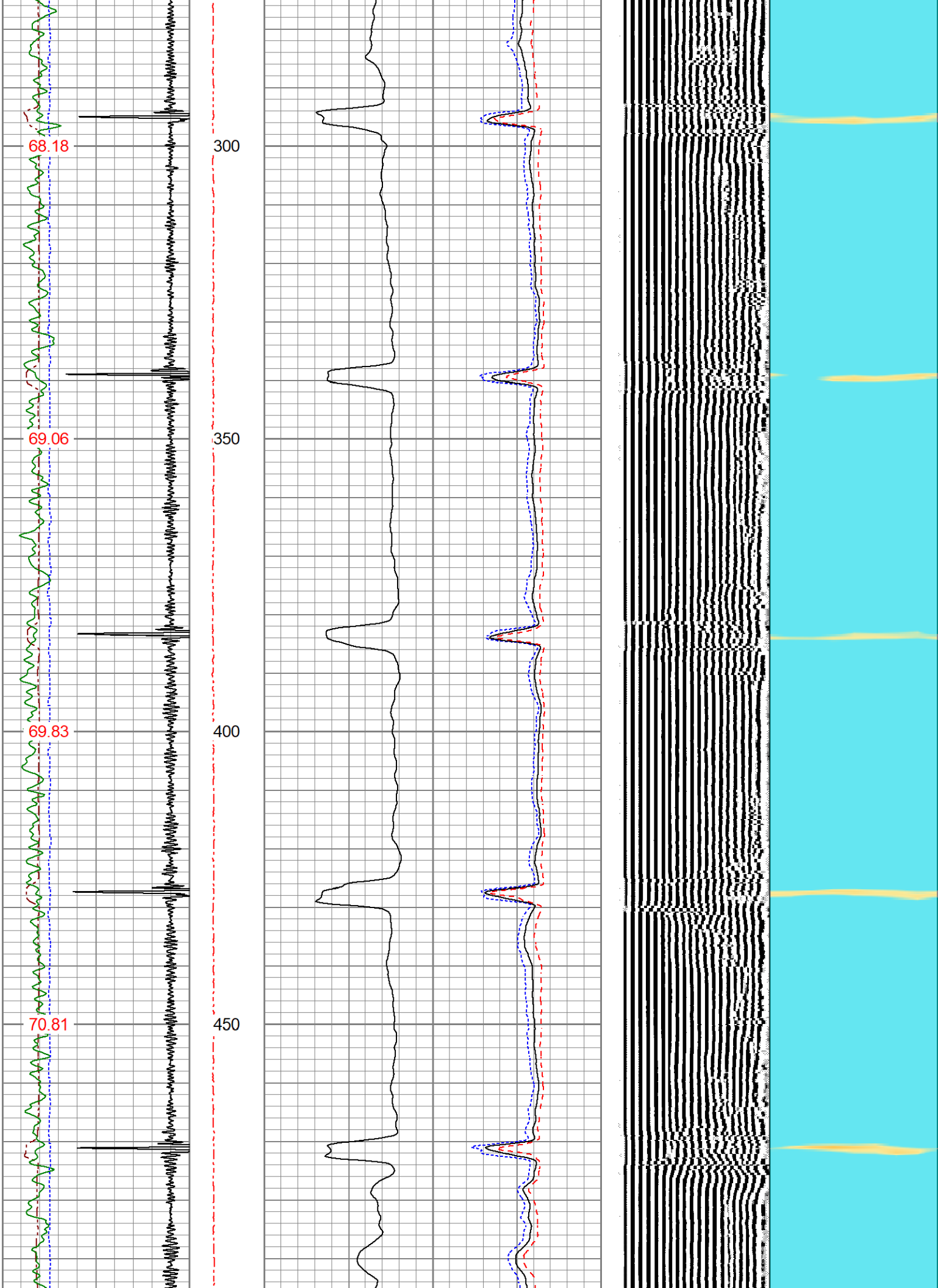
ZERO PSI APPLIED AT SURFACE

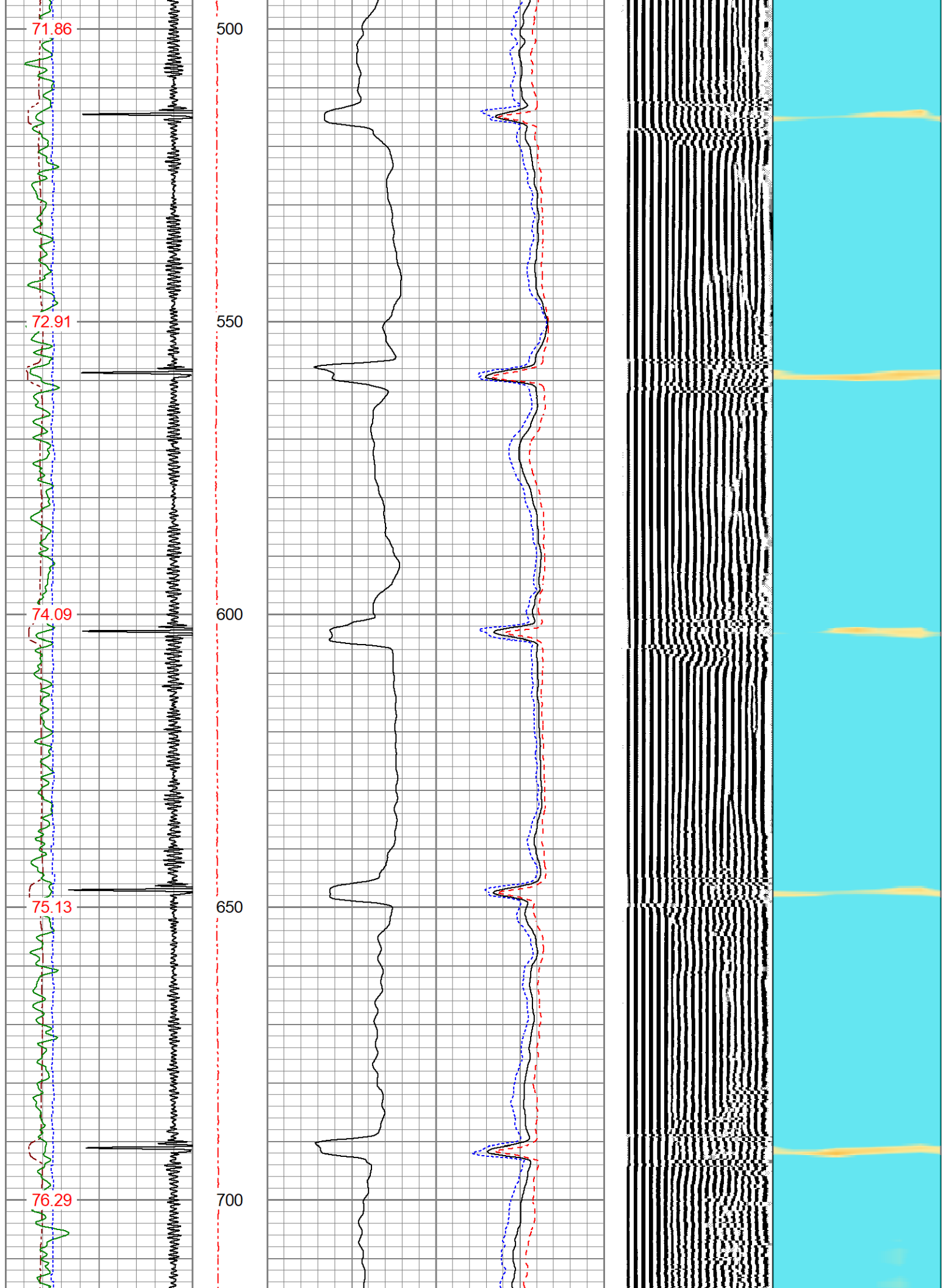
Database File 115-1077595_oxy_miller 26-29_0512330641_20250725_scl-gr-ccl.db
Dataset Pathname pass6.2
Presentation Format res_scl 8sec-gr-ccl
Dataset Creation Fri Jul 25 10:52:00 2025
Charted by Depth in Feet scaled 1:240

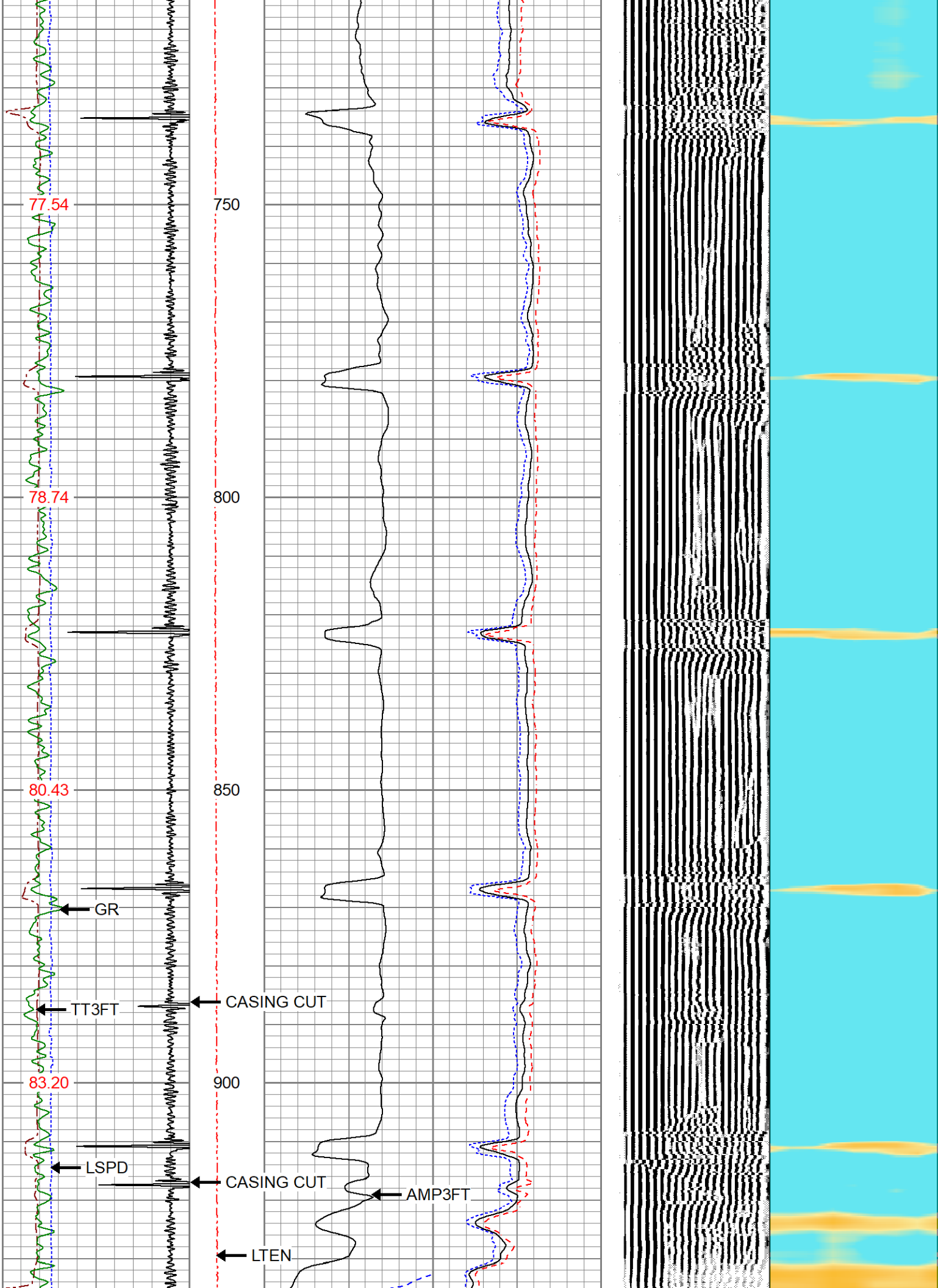
240 3FT TT (usec) 140	LTEN	3' Amplitude	0 Sector Min Amp150	200 VDL (usec) 1200	1 Sector Map	8
-9 CCL 1	(lb)	(mV) 100	Sector Avg Amp			
0 GR 150	0 2000	3' Amplified Amplitude X 5	0 150			
-150 LSPD (ft/min) 150		(mV) 20	Sector Max Amp			
TEMP (degF)			0 150			

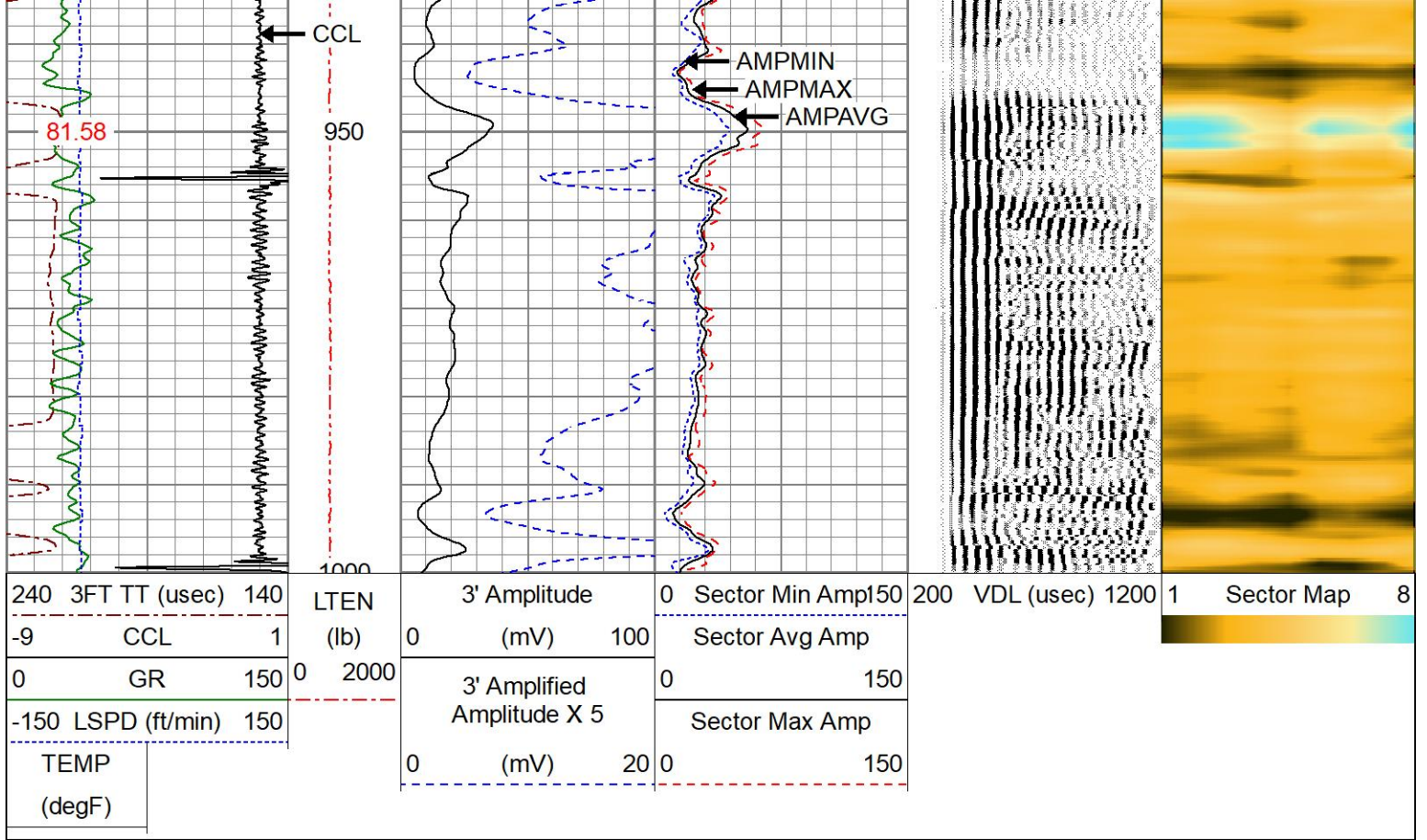








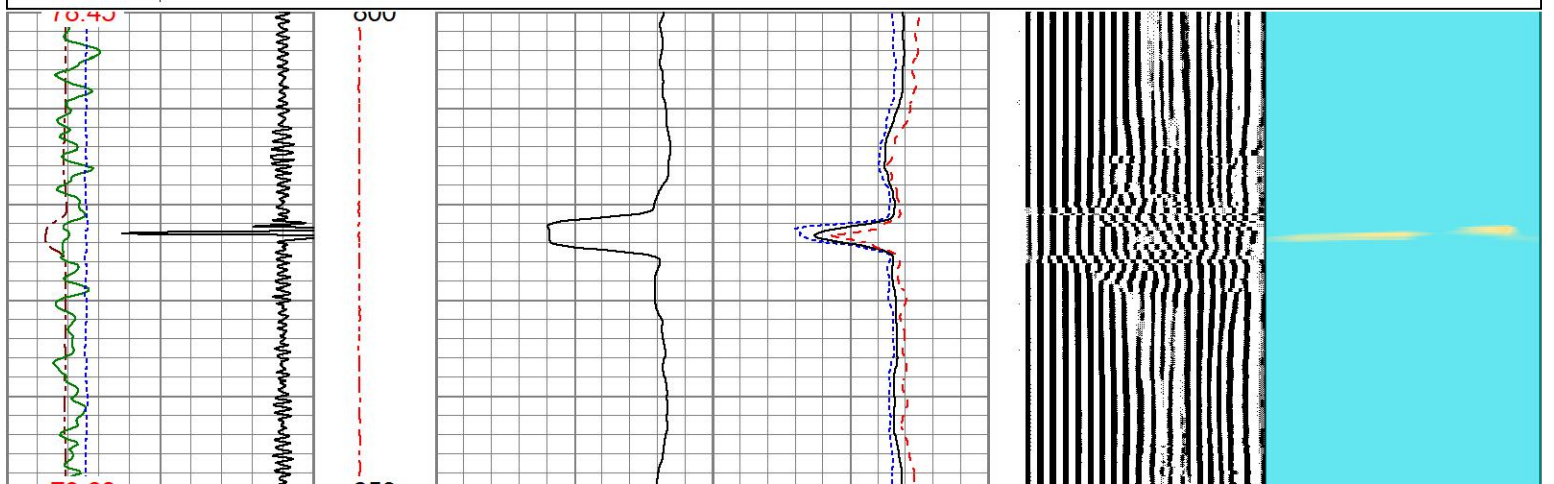
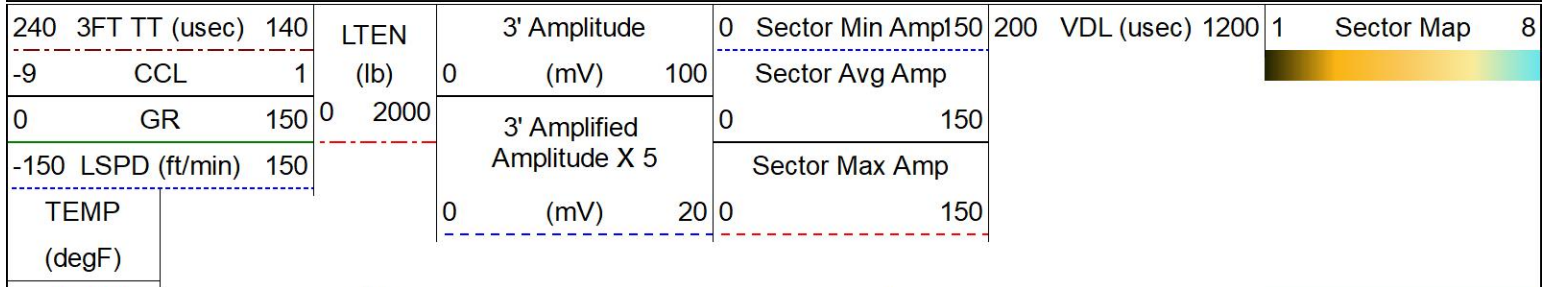


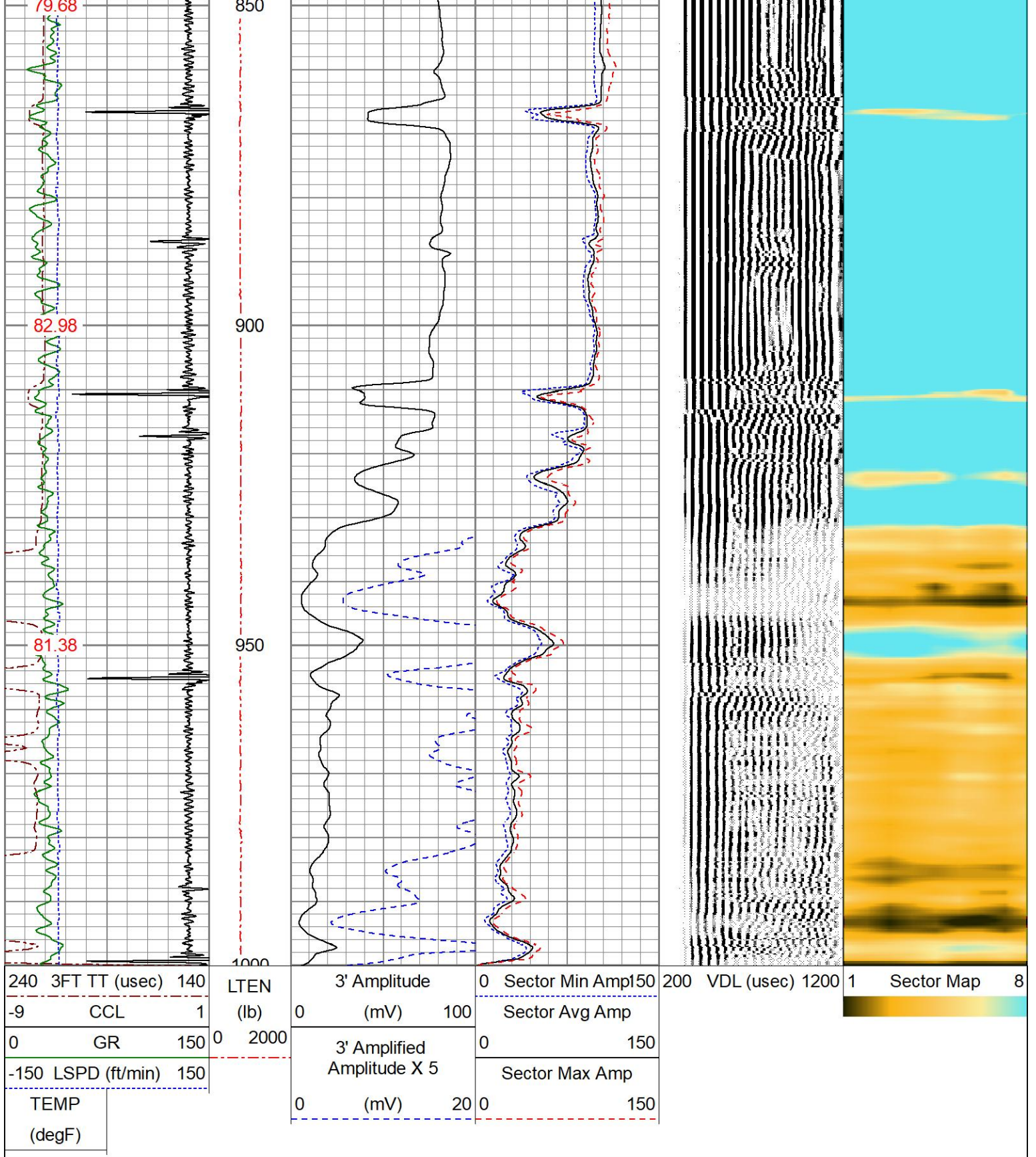


REPEAT PASS

ZERO PSI APPLIED AT SURFACE

Database File: I15-1077595_oxy_miller 26-29_0512330641_20250725_scbl-gr-ccl.db
 Dataset Pathname: pass4
 Presentation Format: res_scbl 8sec-gr-ccl
 Dataset Creation: Fri Jul 25 10:27:00 2025
 Charted by: Depth in Feet scaled 1:240





Calibration Report

Database File I15-1077595_oxy_miller 26-29_0512330641_20250725_scbl-gr-ccl.db
 Dataset Pathname pass6
 Dataset Creation Fri Jul 25 10:33:09 2025

Gamma Ray Calibration Report

Serial Number: 0111
 Tool Model: Tek-Co 2 3/4
 Performed: Thu Oct 6 10:35:06 2022

Calibrator Value: 1.0
 Background Reading: 0.0 cps
 Calibrator Reading: 1.0 cps
 Sensitivity: 0.6700 /cps

Segmented Cement Bond Log Calibration Report

Serial Number: 234RIBT-3020
 Tool Model: 275 Temp JS
 Calibration Casing Diameter: 4.500 in
 Calibration Depth: 140.308 ft

Master Calibration, performed Fri Jul 25 10:20:10 2025:

	Raw (v)		Calibrated (mv)		Results	
	Zero	Cal	Zero	Cal	Gain	Offset
3'	0.000	1.521	0.700	81.196	52.927	0.700
CAL	0.000	1.036				
5'	0.000	1.935	0.700	81.196	41.597	0.700
SUM						
S1	0.000	1.923	0.000	100.000	51.999	0.000
S2	0.000	2.325	0.000	100.000	43.002	0.000
S3	0.000	2.282	0.000	100.000	43.831	0.000
S4	0.000	1.866	0.000	100.000	53.600	0.000
S5	0.000	1.453	0.000	100.000	68.830	0.000
S6	0.000	1.322	0.000	100.000	75.620	0.000
S7	0.000	1.409	0.000	100.000	70.985	0.000
S8	0.000	1.366	0.000	100.000	73.207	0.000

Internal Reference Calibration, performed (Not Performed):

	Raw (v)		Calibrated (v)		Results	
	Zero	Cal	Zero	Cal	Gain	Offset
CAL	0.000	0.000	0.000	1.036	1.000	0.000

Air Zero Calibration, performed Fri Jul 25 10:15:44 2025:

	Raw (v)		Calibrated (v)		Results	
	Zero		Zero		Offset	
3'	0.000		0.000			0.000
5'	0.000		0.000			0.000
SUM						
S1	0.000		0.000			0.000
S2	0.000		0.000			0.000
S3	0.000		0.000			0.000
S4	0.000		0.000			0.000
S5	0.000		0.000			0.000
S6	0.000		0.000			0.000
S7	0.000		0.000			0.000
S8	0.000		0.000			0.000

Temperature Calibration Report

Serial Number: 234RIBT-3020
 Tool Model: 275 Temp JS
 Performed: Mon Sep 14 12:01:25 2020

Performed. Mon Sep 14 12:01:35 2020

	Reference	Reading
Low Reference:	0.00 degF	0.00 usec
High Reference:	1.00 degF	1.00 usec
Gain:	0.33	
Offset:	0.00	
Delta Spacing	1	



Company

Well

Field

County

State

OCCIDENTAL PETROLEUM CORP.

MILLER 26-29

WATTENBERG

WELD

COLORADO