

**Legend**

Soil Boring Location  
(Collected via Trimble GPS)

**Notes**

1) All locations are approximate unless otherwise noted.

GPS – Global Positioning System  
PID – Photoionization Detector  
ppm – Parts per million

0 ft.      30 ft.      60 ft.

Image Source: Google Earth; Google 2021  
Projection: WGS 1984, UTM Zone 13 North

DATE: August 27, 2025

DESIGNED BY: J. Whritenour

DRAWN BY: J. Smithe



**Noble Energy, Inc. – 100322 – DJ Basin**  
**Jepsen T3N-R65W-S2 L04 Tank Battery**  
 NWSW, Section 2, Township 3 North, Range 65 West  
 Weld County, Colorado

SOIL BORING  
LOCATION MAP

FIGURE  
1

**TABLE 1**  
**FIELD DATA SUMMARY TABLE**  
**NOBLE ENERGY, INC. (100322)**  
**JEPSEN T3N-R65W-S2 L04 TANK BATTERY, WELD COUNTY, CO**  
**REM # 37609**

Sample ID	Sample Date	Depth (ft. bgs)	GPS Data Latitude/Longitude		PDOP Value	VOC Concentration (ppm)
PWV01-B@4'	1/23/2025	4	40.252781	-104.638432	NC	1,344
PWV01-N@2.5'	1/23/2025	2.5	40.252800	-104.638443	0.9	1,588
PWV01-E@2.5'	1/23/2025	2.5	40.252778	-104.638417	0.9	43.8
PWV01-W@2.5'	1/23/2025	2.5	40.252779	-104.638446	NC	969.4
PWV01-S@2.5'	1/23/2025	2.5	40.252763	-104.638430	1.0	258.0
SEP01-FL@3.5'	1/23/2025	3.5	40.252487	-104.638295	0.8	0.0
SEP01-DL@3.5'	1/23/2025	3.5	40.252523	-104.638289	0.8	0.0
AST01@0-6"	1/24/2025	0-0.5	40.252816	-104.638457	0.8	7.3
FLARE01@0-6"	1/24/2025	0-0.5	40.252548	-104.638501	1.1	0.0
MH01@0-6"	1/24/2025	0-0.5	40.252512	-104.638378	0.9	0.0
BH01@0-0.5'	7/31/2025	0-0.5	40.252781	-104.638429	0.9	0.2
BH01@3-4'	7/31/2025	3-4	40.252781	-104.638429	0.9	0.4
BH01@5-6	7/31/2025	5-6	40.252781	-104.638429	0.9	0.6
BH02@0-0.5'	7/31/2025	0-0.5	40.252835	-104.638428	0.9	0.4
BH02@1.5-2.5'	7/31/2025	1.5-2.5	40.252835	-104.638428	0.9	0.4
BH02@3-4'	7/31/2025	3-4	40.252835	-104.638428	0.9	0.3
BH03@0-0.5'	7/31/2025	0-0.5	40.252784	-104.638318	0.8	0.1
BH03@1.5-2.5'	7/31/2025	1.5-2.5	40.252784	-104.638318	0.8	0.3
BH03@3-4'	7/31/2025	3-4	40.252784	-104.638318	0.8	0.0
BH04@0-0.5'	7/31/2025	0-0.5	40.252713	-104.638408	0.8	0.0
BH04@1.5-2.5'	7/31/2025	1.5-2.5	40.252713	-104.638408	0.8	0.5

**TABLE 1**  
**FIELD DATA SUMMARY TABLE**  
**NOBLE ENERGY, INC. (100322)**  
**JEPSEN T3N-R65W-S2 L04 TANK BATTERY, WELD COUNTY, CO**  
**REM # 37609**

Sample ID	Sample Date	Depth (ft. bgs)	GPS Data Latitude/Longitude		PDOP Value	VOC Concentration (ppm)
BH04@3-4'	7/31/2025	3-4	40.252713	-104.638408	0.8	0.5
BH05@0-0.5'	7/31/2025	0-0.5	40.252773	-104.638513	0.8	0.6
BH05@1.5-2.5'	7/31/2025	1.5-2.5	40.252773	-104.638513	0.8	0.5
BH05@3-4'	7/31/2025	3-4	40.252773	-104.638513	0.8	0.5
BKG01@0-6"	1/24/2025	0-0.5	40.252643	-104.638710	0.9	0.0
BKG01@3'	1/24/2025	3	40.252643	-104.638710	0.9	0.0
BKG01@4'	1/24/2025	4	40.252643	-104.638710	0.9	0.0
BKG02@0-6"	1/24/2025	0-0.5	40.252437	-104.638571	0.8	0.0
BKG02@3'	1/24/2025	3	40.252437	-104.638571	0.8	0.0
BKG02@4'	1/24/2025	4	40.252437	-104.638571	0.8	0.0
BKG03@0-0.5'	7/31/2025	0-0.5	40.252906	-104.638584	0.8	0.1
BKG03@1.5-2.5'	7/31/2025	1.5-2.5	40.252906	-104.638584	0.8	0.4
BKG03@3-4'	7/31/2025	3-4	40.252906	-104.638584	0.8	0.6
BKG03@5-6'	7/31/2025	5-6	40.252906	-104.638584	0.8	0.4
BKG04@0-0.5'	7/31/2025	0-0.5	40.252778	-104.638580	NC	0.6
BKG04@1.5-2.5'	7/31/2025	1.5-2.5	40.252778	-104.638580	NC	0.6
BKG04@3-4'	7/31/2025	3-4	40.252778	-104.638580	NC	2.4
BKG04@5-6'	7/31/2025	5-6	40.252778	-104.638580	NC	0.7
BKG05@0-0.5'	7/31/2025	0-0.5	40.252614	-104.638584	0.8	0.6
BKG05@1.5-2.5'	7/31/2025	1.5-2.5	40.252614	-104.638584	0.8	0.6
BKG05@3-4'	7/31/2025	3-4	40.252614	-104.638584	0.8	0.6

**TABLE 1**  
**FIELD DATA SUMMARY TABLE**  
**NOBLE ENERGY, INC. (100322)**  
**JEPSEN T3N-R65W-S2 L04 TANK BATTERY, WELD COUNTY, CO**  
**REM # 37609**

Sample ID	Sample Date	Depth (ft. bgs)	GPS Data Latitude/Longitude		PDOP Value	VOC Concentration (ppm)
BKG05@5-6'	7/31/2025	5-6	40.252614	-104.638584	0.8	0.5
BKG06@0-0.5'	7/31/2025	0-0.5	40.252988	-104.638113	0.8	0.1
BKG06@1.5-2.5'	7/31/2025	1.5-2.5	40.252988	-104.638113	0.8	0.2
BKG06@3-4'	7/31/2025	3-4	40.252988	-104.638113	0.8	0.0
BKG06@5-6'	7/31/2025	5-6	40.252988	-104.638113	0.8	0.1
BKG07@0-0.5'	7/31/2025	0-0.5	40.252919	-104.637975	0.8	0.1
BKG07@1.5-2.5'	7/31/2025	1.5-2.5	40.252919	-104.637975	0.8	0.2
BKG07@3-4'	7/31/2025	3-4	40.252919	-104.637975	0.8	0.3
BKG07@5-6'	7/31/2025	5-6	40.252919	-104.637975	0.8	0.3

1. Global Positioning System (GPS) data is provided in decimal degrees using North American Datum (NAD) 83 UTM Zone 13 North.

2. Volatile organic compound (VOC) concentrations are measured in the field using a photoionization detector (PID).

PDOP = Position Dilution of Precision

ppm = Parts per million

in. = Inches

ft. = Feet

bgs = Below ground surface

NC = Data not collected

TABLE 2  
SUMMARY OF VOLATILE ORGANIC SOIL CHEMISTRY DATA  
NOBLE ENERGY, INC. (100322)  
JEPSEN T3N-R65W-S2 L04 TANK BATTERY, WELD COUNTY, CO  
REM # 37609

Sample ID	Sample Date	Depth (ft. bgs)	Benzene (mg/kg)	Toluene (mg/kg)	Ethyl-Benzene (mg/kg)	Xylenes (mg/kg)	1,2,4-Trimethyl-Benzene (mg/kg)	1,3,5-Trimethyl-Benzene (mg/kg)	Naphthalene (mg/kg)	TPH (mg/kg)	TPH GRO (mg/kg)	TPH DRO (mg/kg)	TPH ORO (mg/kg)
ECMC Table 915-1 Limits (Residential SSL)			1.2	490	5.8	58	30	27	2	500	500**		
ECMC Table 915-1 Limits (Protection of Groundwater SSL)			0.0026	0.69	0.78	9.9	0.0081	0.0087	0.0038	500	500**		
PWV01-B@4'	1/23/2025	4	<b>0.43</b>	<0.050	<b>1.3</b>	<b>25</b>	<b>7.1</b>	<b>5.1</b>	<0.038*	<b>500</b>	<b>310</b>	<b>190</b>	<50
PWV01-N@2.5'	1/23/2025	2.5	<b>0.62</b>	0.023	<b>7.1</b>	0.061	<b>41</b>	<b>31</b>	<b>0.27</b>	<b>1,694</b>	<b>1,600</b>	<b>94</b>	<50
SEP01-FL@3.5'	1/23/2025	3.5	<0.0020	<0.0050	<0.0050	<0.010	<0.0050	<0.0050	<0.0038*	<50	<0.50	<50	<50
SEP01-DL@3.5'	1/23/2025	3.5	<0.0020	<0.0050	<0.0050	<0.010	<0.0050	<0.0050	<0.0038*	<50	<0.50	<50	<50
AST01@0-6"	1/24/2025	0-0.5	<0.0020	0.019	0.017	0.15	<b>0.075</b>	<b>0.053</b>	<b>0.010</b>	1.3	1.3	<50	<50
BH01@0-0.5'	7/31/2025	0-0.5	<0.00097	<0.0019	<0.0019	<0.0019	<0.0019	<0.0019	<0.0019	24.31	<0.19	6.21	18.1
BH01@3-4'	7/31/2025	3-4	<0.00098	<0.0020	<0.0020	<0.0020	<0.0020	<0.0020	<0.0021	22.10	<0.20	7.50	14.6
BH01@5-6	7/31/2025	5-6	<0.0010	<0.0021	<0.0021	<0.0021	<0.0021	<0.0021	<0.0020	24.38	<0.21	7.18	17.2
BH02@0-0.5'	7/31/2025	0-0.5	<0.00094	<0.0019	<0.0019	<0.0019	<0.0019	<0.0019	<0.0020	22.00	<0.19	4.60	17.4
BH02@1.5-2.5'	7/31/2025	1.5-2.5	<0.0094	<0.0019	<0.0019	<0.0019	<0.0019	<0.0019	<0.0019	7.73	<0.19	<4.1	7.73
BH02@3-4'	7/31/2025	3-4	<0.0010	<0.0020	<0.0020	<0.0020	<0.0020	<0.0020	<0.0021	<6.4	<0.20	<4.3	<6.4
BH03@0-0.5'	7/31/2025	0-0.5	<0.0010	<0.0020	<0.0020	<0.0020	<0.0020	<0.0020	<0.0021	<6.5	<0.20	<4.3	<6.5
BH03@1.5-2.5'	7/31/2025	1.5-2.5	<0.0011	<0.0022	<0.0022	<0.0022	<0.0022	<0.0022	<0.0022	<6.6	<0.22	<4.5	<6.6
BH03@3-4'	7/31/2025	3-4	<0.0010	<0.0020	<0.0020	<0.0020	<0.0020	<0.0020	<0.0022	<6.5	<0.20	<4.3	<6.5
BH04@0-0.5'	7/31/2025	0-0.5	<0.0011	<0.0021	<0.0021	<0.0021	<0.0021	<0.0021	<0.0022	<6.7	<0.21	<4.4	<6.7
BH04@1.5-2.5'	7/31/2025	1.5-2.5	<0.00095	<0.0019	<0.0019	<0.0019	<0.0019	<0.0019	<0.0019	21.16	<0.19	5.26	15.9
BH04@3-4'	7/31/2025	3-4	<0.0010	<0.0021	<0.0021	<0.0021	<0.0021	<0.0021	<0.0020	<6.3	<0.21	<4.2	<6.3
BH05@0-0.5'	7/31/2025	0-0.5	<0.00097	<0.0019	<0.0019	<0.0019	<0.0019	<0.0019	<0.0019	<6.0	<0.19	<4.0	<6.0
BH05@1.5-2.5'	7/31/2025	1.5-2.5	<0.0010	<0.0020	<0.0020	<0.0020	<0.0020	<0.0020	<0.0019	<6.0	<0.20	<4.0	<6.0
BH05@3-4'	7/31/2025	3-4	<0.00093	<0.0019	<0.0019	<0.0019	<0.0019	<0.0019	<0.0019	<5.9	<0.19	<5.0	<5.9

- Bold** values exceed the ECMC Table 915-1 limit(s).
  - Red & blue highlighted soil analytical values indicate an exceedance of the referenced soil screening level (SSL).
  - \* Indicates laboratory minimum detection limit in excess of SSL.
  - \*\* Summation of GRO+DRO+ORO must be less than 500 mg/kg.
- ECMC = Energy & Carbon Management Commission  
(<) = Analytical result is less than the indicated laboratory reporting limit.  
TPH-GRO = Total petroleum hydrocarbons - gasoline range organics  
TPH-DRO = Total petroleum hydrocarbons - diesel range organics  
TPH-ORO = Total petroleum hydrocarbons - oil range organics  
mg/kg = Milligrams per kilogram  
ft. = Feet  
bgs = Below ground surface

TABLE 3  
SUMMARY OF POLYCYCLIC AROMATIC HYDROCARBON SOIL CHEMISTRY DATA  
NOBLE ENERGY, INC. (100322)  
JEPSEN T3N-R65W-S2 L04 TANK BATTERY, WELD COUNTY, CO  
REM # 37609

Sample ID	Sample Date	Depth (ft. bgs)	Acenaphthene (mg/kg)	Anthracene (mg/kg)	Benzo (a) Anthracene (mg/kg)	Benzo (a) Pyrene (mg/kg)	Benzo (b) Fluoranthene (mg/kg)	Benzo (k) Fluoranthene (mg/kg)	Chrysene (mg/kg)	Dibenzo (a,h) Anthracene (mg/kg)	Fluoranthene (mg/kg)	Fluorene (mg/kg)	Indeno (1,2,3-cd) Pyrene (mg/kg)	Pyrene (mg/kg)	1-Methyl - Naphthalene (mg/kg)	2-Methyl - Naphthalene (mg/kg)
ECMC Table 915-1 Limits (Residential SSL)			360	1,800	1.1	0.11	1.1	11	110	0.11	240	240	1.1	180	18	24
ECMC Table 915-1 Limits (Protection of Groundwater SSL)			0.55	5.8	0.011	0.24	0.3	2.9	9	0.096	8.9	0.54	0.98	1.3	0.006	0.019
PWV01-B@4'	1/23/2025	4	<0.00500	<0.00500	<b>0.0243</b>	<0.00500	<0.00500	<0.00500	0.00684	<0.00500	<0.00500	<0.00500	<0.00500	<0.00500	<b>0.474</b>	<b>0.530</b>
PWV01-N@2.5'	1/23/2025	2.5	<0.00500	<0.00500	0.00966	<0.00500	<0.00500	<0.00500	<0.00500	<0.00500	<0.00500	<0.00500	<0.00500	<0.00500	<b>0.327</b>	<b>0.531</b>
SEP01-FL@3.5'	1/23/2025	3.5	<0.00500	<0.00500	<0.00500	<0.00500	<0.00500	<0.00500	<0.00500	<0.00500	<0.00500	<0.00500	<0.00500	<0.00500	<0.00500	<0.00500
SEP01-DL@3.5'	1/23/2025	3.5	<0.00500	<0.00500	<0.00500	<0.00500	<0.00500	<0.00500	<0.00500	<0.00500	<0.00500	<0.00500	<0.00500	<0.00500	<0.00500	<0.00500
AST01@0-6"	1/24/2025	0-0.5	<0.00500	<0.00500	<0.00500	<0.00500	<0.00500	<0.00500	<0.00500	<0.00500	<0.00500	<0.00500	<0.00500	<0.00500	<0.00500	0.0120
BH01@0-0.5'	7/31/2025	0-0.5	<0.0039	<0.0039	<0.0048	<0.0039	<0.0039	<0.0039	<0.0039	<0.0039	<0.0039	<0.0039	<0.0039	<0.0039	<0.0039	<0.0039
BH01@3-4'	7/31/2025	3-4	<0.0041	<0.0041	<0.0052	<0.0041	<0.0041	<0.0041	<0.0041	<0.0041	<0.0041	<0.0041	<0.0041	<0.0041	<0.0041	<0.0041
BH01@5-6	7/31/2025	5-6	<0.0039	<0.0039	<0.0049	<0.0039	<0.0039	<0.0039	<0.0039	<0.0039	<0.0039	<0.0039	<0.0039	<0.0039	<0.0039	<0.0039
BH02@0-0.5'	7/31/2025	0-0.5	<0.0040	<0.0040	<0.0050	<0.0040	<0.0040	<0.0040	<0.0040	<0.0040	<0.0040	<0.0040	<0.0040	<0.0040	<0.0040	<0.0040
BH02@1.5-2.5'	7/31/2025	1.5-2.5	<0.0039	<0.0039	<0.0049	<0.0039	<0.0039	<0.0039	<0.0039	<0.0039	<0.0039	<0.0039	<0.0039	<0.0039	<0.0039	<0.0039
BH02@3-4'	7/31/2025	3-4	<0.0042	<0.0042	<0.0052	<0.0042	<0.0042	<0.0042	<0.0042	<0.0042	<0.0042	<0.0042	<0.0042	<0.0042	<0.0042	<0.0042
BH03@0-0.5'	7/31/2025	0-0.5	<0.0042	<0.0042	<0.0052	<0.0042	<0.0042	<0.0042	<0.0042	<0.0042	<0.0042	<0.0042	<0.0042	<0.0042	<0.0042	<0.0042
BH03@1.5-2.5'	7/31/2025	1.5-2.5	<0.0044	<0.0044	<0.0055	<0.0044	<0.0044	<0.0044	<0.0044	<0.0044	<0.0044	<0.0044	<0.0044	<0.0044	<0.0044	<0.0044
BH03@3-4'	7/31/2025	3-4	<0.0043	<0.0043	<0.0054	<0.0043	<0.0043	<0.0043	<0.0043	<0.0043	<0.0043	<0.0043	<0.0043	<0.0043	<0.0043	<0.0043
BH04@0-0.5'	7/31/2025	0-0.5	<0.0044	<0.0044	<0.0055	<0.0044	<0.0044	<0.0044	<0.0044	<0.0044	<0.0044	<0.0044	<0.0044	<0.0044	<0.0044	<0.0044
BH04@1.5-2.5'	7/31/2025	1.5-2.5	<0.0038	<0.0038	<0.0047	<0.0038	<0.0038	<0.0038	<0.0038	<0.0038	<0.0038	<0.0038	<0.0038	<0.0038	<0.0038	<0.0038
BH04@3-4'	7/31/2025	3-4	<0.0041	<0.0041	<0.0051	<0.0041	<0.0041	<0.0041	<0.0041	<0.0041	<0.0041	<0.0041	<0.0041	<0.0041	<0.0041	<0.0041
BH05@0-0.5'	7/31/2025	0-0.5	<0.0037	<0.0037	<0.0047	<0.0037	<0.0037	<0.0037	<0.0037	<0.0037	<0.0037	<0.0037	<0.0037	<0.0037	<0.0037	<0.0037
BH05@1.5-2.5'	7/31/2025	1.5-2.5	<0.0038	<0.0038	<0.0048	<0.0038	<0.0038	<0.0038	<0.0038	<0.0038	<0.0038	<0.0038	<0.0038	<0.0038	<0.0038	<0.0038
BH05@3-4'	7/31/2025	3-4	<0.0038	<0.0038	<0.0048	<0.0038	<0.0038	<0.0038	<0.0038	<0.0038	<0.0038	<0.0038	<0.0038	<0.0038	<0.0038	<0.0038

1. **Bold** values exceed the ECMC Table 915-1 limit(s)  
2. Red & blue highlighted soil analytical values indicate an exceedance of the referenced soil screening level (SSL)  
3. \* Indicates laboratory minimum detection limit in excess of SSL  
(<) = Analytical result is less than the indicated laboratory reporting limit.  
mg/kg = Milligrams per kilogram  
ft. = Feet  
bgs = Below ground surface

**TABLE 4**  
**SUMMARY OF SOIL SUITABILITY FOR RECLAMATION**  
**NOBLE ENERGY, INC. (100322)**  
**JEPSEN T3N-R65W-S2 L04 TANK BATTERY, WELD COUNTY, CO**  
**REM # 37609**

Sample ID	Sample Date	Depth (ft. bgs)	pH (Standard Units)	EC (mmhos/cm)	SAR (Standard Units)	Boron (mg/L)
ECMC Table 915-1 Soil Suitability Limits			6 - 8.3	<4	<6	2
PWV01-B@4'	1/23/2025	4	7.54	0.590	0.646	<2.00
PWV01-N@2.5'	1/23/2025	2.5	7.37	0.436	0.404	<2.00
SEP01-FL@3.5'	1/23/2025	3.5	8.59	0.177	0.0260	<2.00
SEP01-DL@3.5'	1/23/2025	3.5	8.62	0.129	0.0678	<2.00
AST01@0-6"	1/24/2025	0-0.5	7.59	0.456	0.0929	<2.00
BH01@0-0.5'	7/31/2025	0-0.5	7.42	0.49	0.178	<0.50
BH01@3-4'	7/31/2025	3-4	7.36	1.1	0.147	<0.50
BH01@5-6	7/31/2025	5-6	7.53	0.88	0.192	<0.50
BH02@0-0.5'	7/31/2025	0-0.5	7.04	1.1	0.105	<0.50
BH02@1.5-2.5'	7/31/2025	1.5-2.5	7.00	0.92	0.0786	<0.50
BH02@3-4'	7/31/2025	3-4	7.25	1.1	0.117	<0.50
BH03@0-0.5'	7/31/2025	0-0.5	7.81	0.37	0.374	<0.50
BH03@1.5-2.5'	7/31/2025	1.5-2.5	7.52	0.42	0.439	<0.50
BH03@3-4'	7/31/2025	3-4	7.68	0.28	0.210	<0.50
BH04@0-0.5'	7/31/2025	0-0.5	7.38	0.26	0.137	<0.50
BH04@1.5-2.5'	7/31/2025	1.5-2.5	7.66	0.35	0.291	<0.50
BH04@3-4'	7/31/2025	3-4	8.01	0.23	0.271	<0.50
BH05@0-0.5'	7/31/2025	0-0.5	6.08	0.15	0.253	<0.50
BH05@1.5-2.5'	7/31/2025	1.5-2.5	6.75	0.20	0.224	<0.50
BH05@3-4'	7/31/2025	3-4	7.11	0.50	0.415	<0.50
BKG01@0-6"	1/24/2025	0-0.5	7.15	0.0578	0.0282	<2.00
BKG01@3'	1/24/2025	3	5.65	0.105	0.0472	<2.00

**TABLE 4**  
**SUMMARY OF SOIL SUITABILITY FOR RECLAMATION**  
**NOBLE ENERGY, INC. (100322)**  
**JEPSEN T3N-R65W-S2 L04 TANK BATTERY, WELD COUNTY, CO**  
**REM # 37609**

Sample ID	Sample Date	Depth (ft. bgs)	pH (Standard Units)	EC (mmhos/cm)	SAR (Standard Units)	Boron (mg/L)
ECMC Table 915-1 Soil Suitability Limits			6 - 8.3	<4	<6	2
BKG01@4'	1/24/2025	4	7.49	0.0143	0.0231	<2.00
BKG02@0-6"	1/24/2025	0-0.5	6.08	0.166	0.0414	<2.00
BKG02@3'	1/24/2025	3	7.18	0.0103	0.0316	<2.00
BKG02@4'	1/24/2025	4	7.72	0.0182	0.0370	<2.00
BKG03@0-0.5'	7/31/2025	0-0.5	6.13	0.31	0.127	<0.50
BKG03@1.5-2.5'	7/31/2025	1.5-2.5	6.41	0.27	0.133	<0.50
BKG03@3-4'	7/31/2025	3-4	6.56	1.6	1.99	<0.50
BKG03@5-6'	7/31/2025	5-6	7.30	3.6	7.53	<0.50
BKG04@0-0.5'	7/31/2025	0-0.5	5.65	0.17	0.131	<0.50
BKG04@1.5-2.5'	7/31/2025	1.5-2.5	6.36	0.14	0.110	<0.50
BKG04@3-4'	7/31/2025	3-4	6.62	0.17	0.152	<0.50
BKG04@5-6'	7/31/2025	5-6	6.59	0.17	0.119	<0.50
BKG05@0-0.5'	7/31/2025	0-0.5	6.10	0.81	0.0567	<0.50
BKG05@1.5-2.5'	7/31/2025	1.5-2.5	6.49	0.10	0.0681	<0.50
BKG05@3-4'	7/31/2025	3-4	6.31	0.14	0.0684	<0.50
BKG05@5-6'	7/31/2025	5-6	7.62	0.96	5.42	<0.50
BKG06@0-0.5'	7/31/2025	0-0.5	7.92	2.6	11.8	<0.50
BKG06@1.5-2.5'	7/31/2025	1.5-2.5	7.82	2.1	10.7	<0.50
BKG06@3-4'	7/31/2025	3-4	7.73	0.89	6.36	<0.50
BKG06@5-6'	7/31/2025	5-6	8.01	0.99	5.22	<0.50
BKG07@0-0.5'	7/31/2025	0-0.5	7.71	3.4	10.1	<0.50
BKG07@1.5-2.5'	7/31/2025	1.5-2.5	7.67	1.9	6.12	<0.50

**TABLE 4**  
**SUMMARY OF SOIL SUITABILITY FOR RECLAMATION**  
**NOBLE ENERGY, INC. (100322)**  
**JEPSEN T3N-R65W-S2 L04 TANK BATTERY, WELD COUNTY, CO**  
**REM # 37609**

Sample ID	Sample Date	Depth (ft. bgs)	pH (Standard Units)	EC (mmhos/cm)	SAR (Standard Units)	Boron (mg/L)
ECMC Table 915-1 Soil Suitability Limits			6 - 8.3	<4	<6	2
BKG07@3-4'	7/31/2025	3-4	7.58	1.1	3.24	<0.50
BKG07@5-6'	7/31/2025	5-6	7.77	1.1	2.88	<0.50
Maximum Background Concentration			8.01	3.6	11.8	0.50

1. **Bold** faced values exceed the ECMC Table 915-1 limit(s), but are within 1.25x maximum background concentrations.
2. **Bold** faced values exceed the ECMC Table 915-1 limit(s) and native background concentrations.
3. **Brown highlighted** soil analytical values indicate a regulatory exceedance.

ECMC = Colorado Energy & Carbon Management Commission

EC = Electrical conductivity

SAR = Sodium adsorption ratio

mmhos/cm = millimhos per centimeter

mg/L = milligram per liter

(<) = Analytical result is less than the indicated laboratory reporting limit.

ft. = Feet

bgs = Below ground surface

TABLE 5  
SUMMARY OF METALS IN SOIL CHEMISTRY DATA  
NOBLE ENERGY, INC. (100322)  
JEPSEN T3N-R65W-S2 L04 TANK BATTERY, WELD COUNTY, CO  
REM # 37609

Sample ID	Sample Date	Depth (ft. bgs)	Arsenic (mg/kg)	Barium (mg/kg)	Cadmium (mg/kg)	Chromium (VI) <sup>(4)</sup> (mg/kg)	Copper (mg/kg)	Lead (mg/kg)	Nickel (mg/kg)	Selenium (mg/kg)	Silver (mg/kg)	Zinc (mg/kg)
ECMC Table 915-1 Limits (Residential SSL)			0.68	15,000	71	0.3	3,100	400	1,500	390	390	23,000
ECMC Table 915-1 Limits (Protection of Groundwater SSL)			0.29	82	0.38	0.00067	46	14	26	0.26	0.8	370
PWV01-B@4'	1/23/2025	4	1.34	39.6	<0.200	<0.30	3.59	4.80	2.93	<0.260	<0.0200	14.6
PWV01-N@2.5'	1/23/2025	2.5	1.18	53.2	<0.200	<0.30	4.49	5.38	2.88	<0.260	0.0354	15.8
SEP01-FL@3.5'	1/23/2025	3.5	1.23	34.6	<0.200	<0.30	2.78	3.64	2.57	<0.260	<0.0200	9.95
SEP01-DL@3.5'	1/23/2025	3.5	1.01	31.9	<0.200	<0.30	2.32	3.04	2.30	<0.260	<0.0200	8.53
AST01@0-6"	1/24/2025	0-0.5	1.12	38.7	<0.200	<0.30	3.31	4.06	2.52	<0.260	<0.0200	11.9
BH01@0-0.5'	7/31/2025	0-0.5	1.6	39.3	0.079	<0.40*	3.7	4.6	3.3	<0.20	<0.050	13.7
BH01@3-4'	7/31/2025	3-4	1.8	44.3	0.084	<0.41*	4.4	4.9	3.8	<0.21	<0.053	14.9
BH01@5-6	7/31/2025	5-6	2.2	44.3	0.11	<0.41*	4.7	5.0	3.6	<0.20	<0.051	15.5
BH02@0-0.5'	7/31/2025	0-0.5	1.1	25.2	<0.050	<0.40*	2.6	6.4	1.3	<0.20	<0.050	7.4
BH02@1.5-2.5'	7/31/2025	1.5-2.5	1.1	24.7	<0.051	<0.43*	2.9	4.8	1.8	<0.20	<0.051	10.4
BH02@3-4'	7/31/2025	3-4	1.8	51.2	0.13	<0.43*	4.1	5.2	4.0	<0.20	<0.050	15.3
BH03@0-0.5'	7/31/2025	0-0.5	2.3	49.7	0.059	<0.42*	3.8	4.5	4.6	<0.21	<0.053	15.9
BH03@1.5-2.5'	7/31/2025	1.5-2.5	2.3	56.3	<0.057	<0.46*	3.5	4.8	5.0	<0.23	<0.057	15.7
BH03@3-4'	7/31/2025	3-4	1.3	42.5	0.067	<0.45*	3.0	4.2	3.1	<0.22	<0.055	11.9
BH04@0-0.5'	7/31/2025	0-0.5	1.9	55.3	0.057	<0.46*	3.4	4.2	4.3	<0.22	<0.056	16.0
BH04@1.5-2.5'	7/31/2025	1.5-2.5	1.6	40.4	0.093	<0.41*	4.1	6.5	3.2	<0.21	<0.053	16.7
BH04@3-4'	7/31/2025	3-4	1.2	30.1	0.056	<0.42*	2.7	3.2	2.4	<0.22	<0.055	10.1
BH05@0-0.5'	7/31/2025	0-0.5	0.92	21.8	0.073	<0.40*	2.1	3.7	2.1	<0.21	<0.053	8.8
BH05@1.5-2.5'	7/31/2025	1.5-2.5	0.96	29.3	0.073	<0.40*	2.0	2.8	2.1	<0.21	<0.053	8.5
BH05@3-4'	7/31/2025	3-4	0.99	29.2	0.054	<0.42	2.0	3.2	2.1	<0.20	<0.051	8.3
BKG01@0-6"	01/24/2025	0-0.5	0.884	21.7	<0.200	<0.30	1.90	5.46	1.57	<0.260	<0.0200	9.03
BKG01@3'	01/24/2025	3	0.795	29.9	<0.200	<0.30	1.63	2.40	1.76	<0.260	<0.0200	7.30
BKG01@4'	01/24/2025	4	0.849	32.3	<0.200	<0.30	1.66	2.50	1.88	<0.260	<0.0200	7.73
BKG02@0-6"	01/24/2025	0-0.5	0.920	22.5	<0.200	<0.30	2.05	4.82	1.82	<0.260	<0.0200	9.55
BKG02@3'	01/24/2025	3	1.01	40.8	<0.200	<0.30	2.08	2.95	2.28	<0.260	0.0215	9.36
BKG02@4'	01/24/2025	4	0.820	33.7	<0.200	<0.30	1.74	2.54	1.94	<0.260	<0.0200	7.81
BKG03@0-0.5'	7/31/2025	0-0.5	0.94	21.1	0.063	<0.41*	1.9	3.6	1.8	<0.21	<0.052	8.1
BKG03@1.5-2.5'	7/31/2025	1.5-2.5	1.2	30.2	0.055	<0.42*	2.5	3.6	2.5	<0.21	<0.053	10.4

TABLE 5  
SUMMARY OF METALS IN SOIL CHEMISTRY DATA  
NOBLE ENERGY, INC. (100322)  
JEPSEN T3N-R65W-S2 L04 TANK BATTERY, WELD COUNTY, CO  
REM # 37609

Sample ID	Sample Date	Depth (ft. bgs)	Arsenic (mg/kg)	Barium (mg/kg)	Cadmium (mg/kg)	Chromium (VI) <sup>(4)</sup> (mg/kg)	Copper (mg/kg)	Lead (mg/kg)	Nickel (mg/kg)	Selenium (mg/kg)	Silver (mg/kg)	Zinc (mg/kg)
ECMC Table 915-1 Limits (Residential SSL)			0.68	15,000	71	0.3	3,100	400	1,500	390	390	23,000
ECMC Table 915-1 Limits (Protection of Groundwater SSL)			0.29	82	0.38	0.00067	46	14	26	0.26	0.8	370
BKG03@3-4'	7/31/2025	3-4	1.0	33.2	0.060	<0.40*	2.3	2.9	2.4	<0.21	<0.054	9.8
BKG03@5-6'	7/31/2025	5-6	1.5	46.1	0.051	<0.42*	3.0	3.7	3.5	<0.20	<0.050	12.9
BKG04@0-0.5'	7/31/2025	0-0.5	0.94	19.3	0.073	<0.41*	2.0	3.6	1.9	<0.20	<0.049	8.7
BKG04@1.5-2.5'	7/31/2025	1.5-2.5	0.87	29.2	<0.051	<0.40*	1.9	3.0	2.0	<0.20	<0.051	8.0
BKG04@3-4'	7/31/2025	3-4	0.82	28.4	<0.051	<0.42*	1.9	2.7	1.8	<0.20	<0.051	7.6
BKG04@5-6'	7/31/2025	5-6	1.0	31.8	<0.054	<0.40*	2.3	3.3	2.4	<0.21	<0.054	9.4
BKG05@0-0.5'	7/31/2025	0-0.5	1.0	25.9	0.088	<0.40*	2.1	4.2	1.9	<0.21	<0.053	9.0
BKG05@1.5-2.5'	7/31/2025	1.5-2.5	0.90	27.2	0.062	<0.41*	2.0	3.1	2.0	<0.21	<0.053	8.8
BKG05@3-4'	7/31/2025	3-4	0.83	25.8	0.051	<0.40*	1.9	3.8	1.9	<0.19	<0.048	8.5
BKG05@5-6'	7/31/2025	5-6	1.4	42.9	<0.053	<0.43*	2.9	3.8	3.3	<0.21	<0.053	12.5
BKG06@0-0.5'	7/31/2025	0-0.5	1.0	25.8	0.072	<0.44*	2.0	2.8	1.9	<0.21	<0.053	8.0
BKG06@1.5-2.5'	7/31/2025	1.5-2.5	1.5	40.9	<0.055	<0.45*	2.8	3.5	3.3	<0.22	<0.055	11.1
BKG06@3-4'	7/31/2025	3-4	2.2	47.4	<0.057	<0.49*	2.4	3.5	3.3	<0.23	<0.057	12.2
BKG06@5-6'	7/31/2025	5-6	1.9	40.5	<0.063	<0.49*	2.2	3.4	3.7	<0.25	<0.063	11.2
BKG07@0-0.5'	7/31/2025	0-0.5	2.0	61.6	0.10	<0.46*	4.6	6.3	4.5	<0.22	<0.056	17.0
BKG07@1.5-2.5'	7/31/2025	1.5-2.5	1.1	19.5	0.091	<0.46*	2.5	4.5	2.0	<0.22	<0.054	9.0
BKG07@3-4'	7/31/2025	3-4	1.8	46.0	0.062	<0.49*	3.2	3.5	3.2	<0.23	<0.057	12.1
BKG07@5-6'	7/31/2025	5-6	2.0	77.9	<0.066	<0.53*	3.3	4.2	3.5	<0.26	<0.066	14.2
1.25x Maximum Background Concentration			2.8	97.4	0.13	0.66	5.8	7.9	5.6	0.33	0.083	21.3

1. **Bold** faced values exceed the ECMC Table 915-1 limit(s), but are within 1.25x maximum background concentrations.

2. **Red** faced values exceed the ECMC Table 915-1 limit(s) and native background concentrations.

3. Red & blue highlighted soil analytical values indicate an exceedance of the referenced soil screening level (SSL).

4. Compound falls within ECMC Table 915-1 Footnote 9.

5. Non-detect background results accounted for in the highest background concentration by using the reporting limit.

ECMC = Energy & Carbon Management Commission

(<) = Analytical result is less than the indicated laboratory reporting limit.

mg/kg = Milligrams per kilogram

ft. = Feet

bgs = Below ground surface

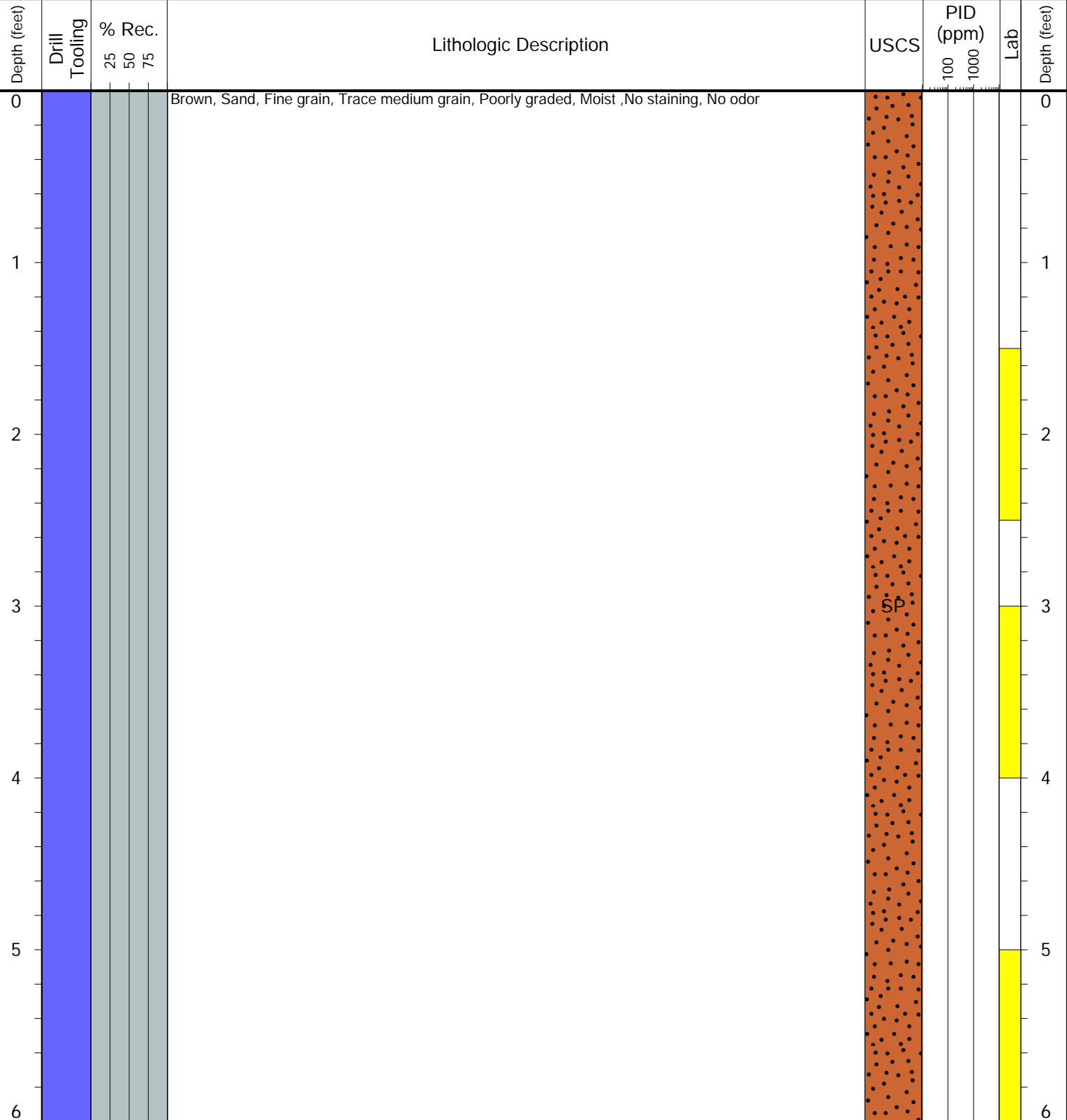
\* Indicates laboratory minimum detection limit in excess of SSL



CLIENT: NOBLE  
 LOGGED BY: Jack Smithe  
 PROJECT MANAGER: Bryce Goldade  
 DRILLING CONTRACTOR: Tasman  
 DRILLING EQUIPMENT: Hand Auger  
 DRILL BIT SIZE (INCHES): 3"  
 DATE STARTED - COMPLETED: 7/31/2025  
 TOTAL WELL DEPTH (FT. BGS): 6  
 DEPTH TO WATER (FT. BGS): Not Encountered ▼

**Jepsen T3N-R65W-S2 L04**  
**BORING ID: BH01**  
 LOCATION: Central point  
 LATITUDE (NAD 83): 40.252781  
 LONGITUDE (NAD 83): -104.638429  
 GROUND ELEVATION (FT. AMSL): Not Measured  
 ABANDONMENT METHOD: Native Material

4725 Independence St.  
 Wheat Ridge, CO 80033



**Drilling / Sample Method:**

- Macro-Core
- Hand Auger
- Expendable Well Tip
- HydroPunch Groundwater Sampler

**Laboratory Sample Types:**

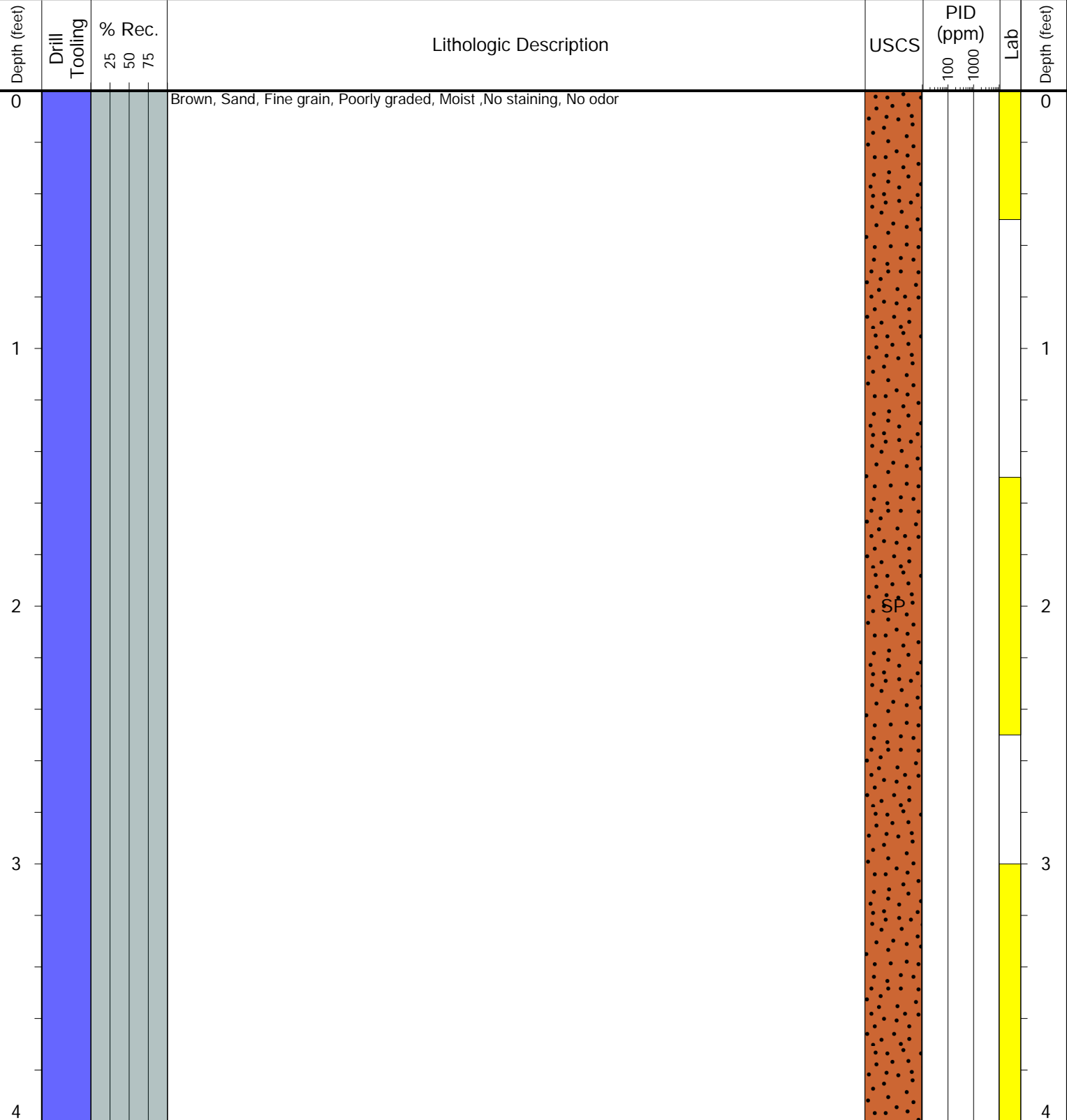
- Geotechnical Lab
- Analytical Chemistry Lab
- Geotechnical & Analytical Chemistry Lab



CLIENT: NOBLE  
 LOGGED BY: Jack Smithe  
 PROJECT MANAGER: Bryce Goldade  
 DRILLING CONTRACTOR: Tasman  
 DRILLING EQUIPMENT: Hand Auger  
 DRILL BIT SIZE (INCHES): 3"  
 DATE STARTED - COMPLETED: '7/31/2025  
 TOTAL WELL DEPTH (FT. BGS): 4  
 DEPTH TO WATER (FT. BGS): Not Encountered ▼

**Jepsen T3N-R65W-S2 L04**  
**BORING ID: BH02**  
 LOCATION: E of BH01  
 LATITUDE (NAD 83): 40.252835  
 LONGITUDE (NAD 83): -104.638428  
 GROUND ELEVATION (FT. AMSL): Not Measured  
 ABANDONMENT METHOD: Native Material

4725 Independence St.  
 Wheat Ridge, CO 80033



**Drilling / Sample Method:**

- Macro-Core
- Hand Auger
- Expendable Well Tip
- HydroPunch Groundwater Sampler

**Laboratory Sample Types:**

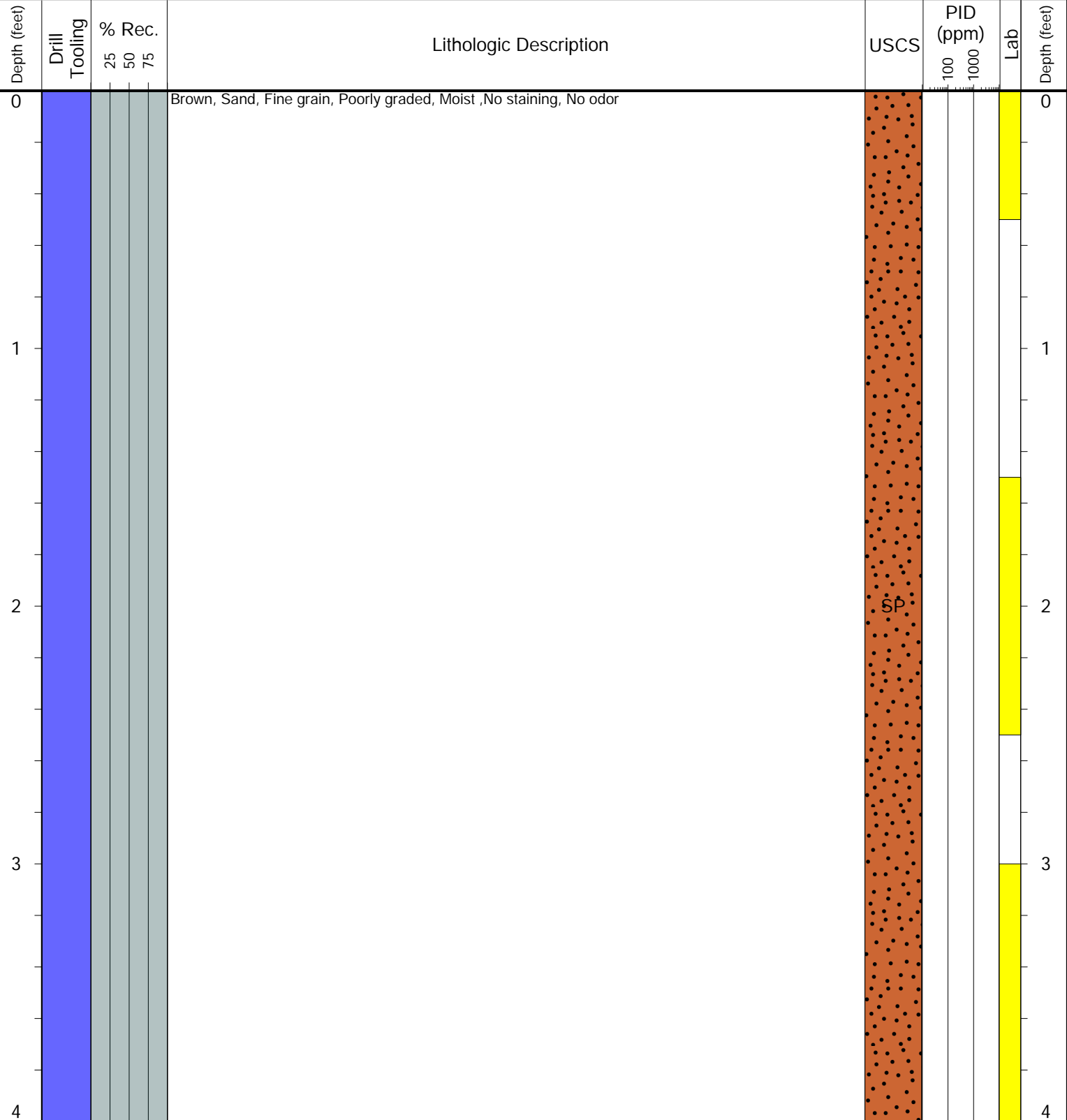
- Geotechnical Lab
- Analytical Chemistry Lab
- Geotechnical & Analytical Chemistry Lab



CLIENT: NOBLE  
 LOGGED BY: Jack Smithe  
 PROJECT MANAGER: Bryce Goldade  
 DRILLING CONTRACTOR: Tasman  
 DRILLING EQUIPMENT: Hand Auger  
 DRILL BIT SIZE (INCHES): 3"  
 DATE STARTED - COMPLETED: '7/31/2025  
 TOTAL WELL DEPTH (FT. BGS): 4  
 DEPTH TO WATER (FT. BGS): Not Encountered ▼

**Jepsen T3N-R65W-S2 L04**  
**BORING ID: BH03**  
 LOCATION: N of BH01  
 LATITUDE (NAD 83): 40.252784  
 LONGITUDE (NAD 83): -104.638318  
 GROUND ELEVATION (FT. AMSL): Not Measured  
 ABANDONMENT METHOD: Native Material

4725 Independence St.  
 Wheat Ridge, CO 80033



**Drilling / Sample Method:**

- Macro-Core
- Hand Auger
- Expendable Well Tip
- HydroPunch Groundwater Sampler

**Laboratory Sample Types:**

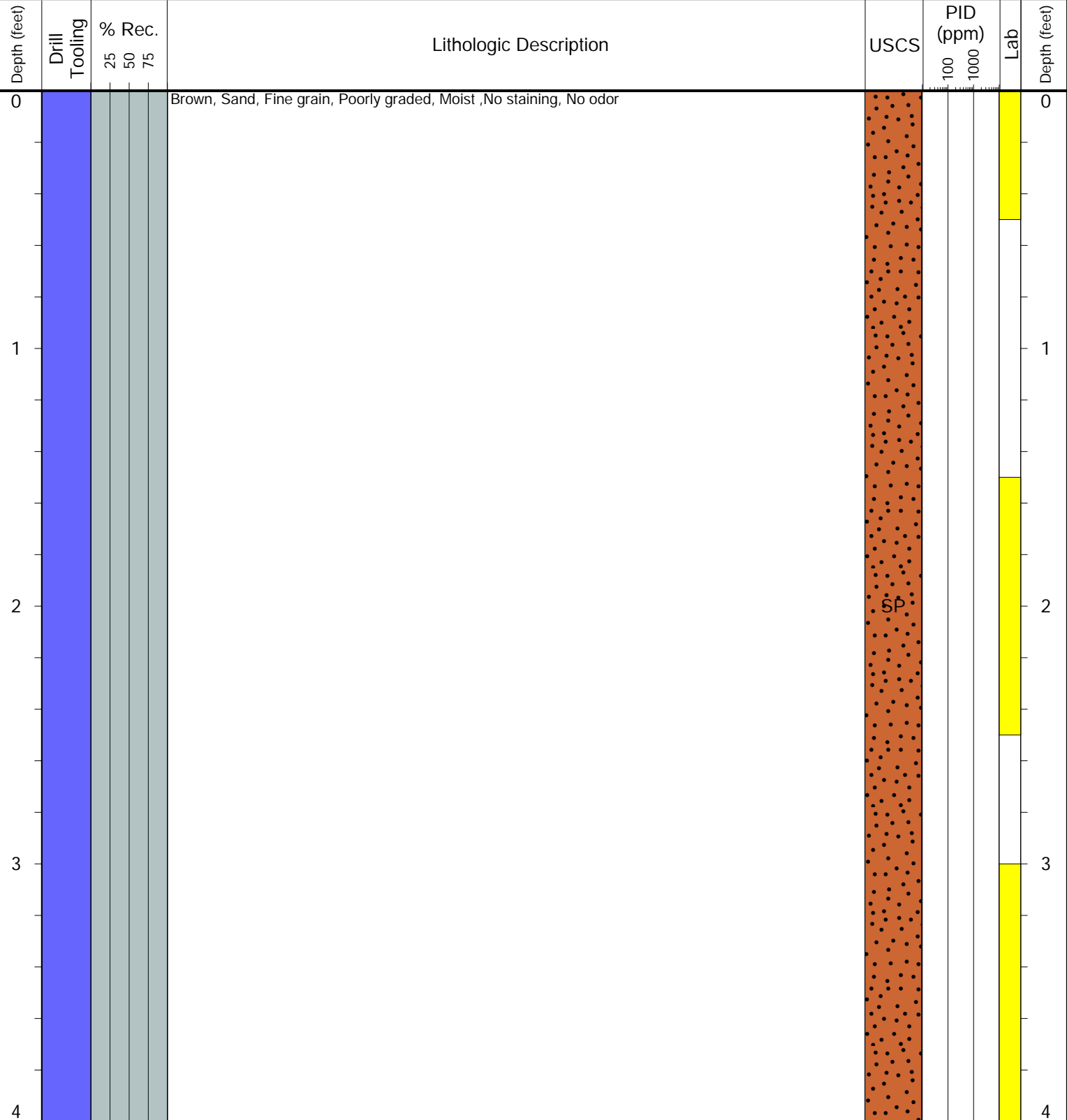
- Geotechnical Lab
- Analytical Chemistry Lab
- Geotechnical & Analytical Chemistry Lab



CLIENT: NOBLE  
 LOGGED BY: Jack Smithe  
 PROJECT MANAGER: Bryce Goldade  
 DRILLING CONTRACTOR: Tasman  
 DRILLING EQUIPMENT: Hand Auger  
 DRILL BIT SIZE (INCHES): 3"  
 DATE STARTED - COMPLETED: '7/31/2025  
 TOTAL WELL DEPTH (FT. BGS): 4  
 DEPTH TO WATER (FT. BGS): Not Encountered ▼

**Jepsen T3N-R65W-S2 L04**  
**BORING ID: BH04**  
 LOCATION: S of BH02  
 LATITUDE (NAD 83): 40.252713  
 LONGITUDE (NAD 83): -104.638408  
 GROUND ELEVATION (FT. AMSL): Not Measured  
 ABANDONMENT METHOD: Native Material

4725 Independence St.  
 Wheat Ridge, CO 80033



**Drilling / Sample Method:**

- Macro-Core
- Hand Auger
- Expendable Well Tip
- HydroPunch Groundwater Sampler

**Laboratory Sample Types:**

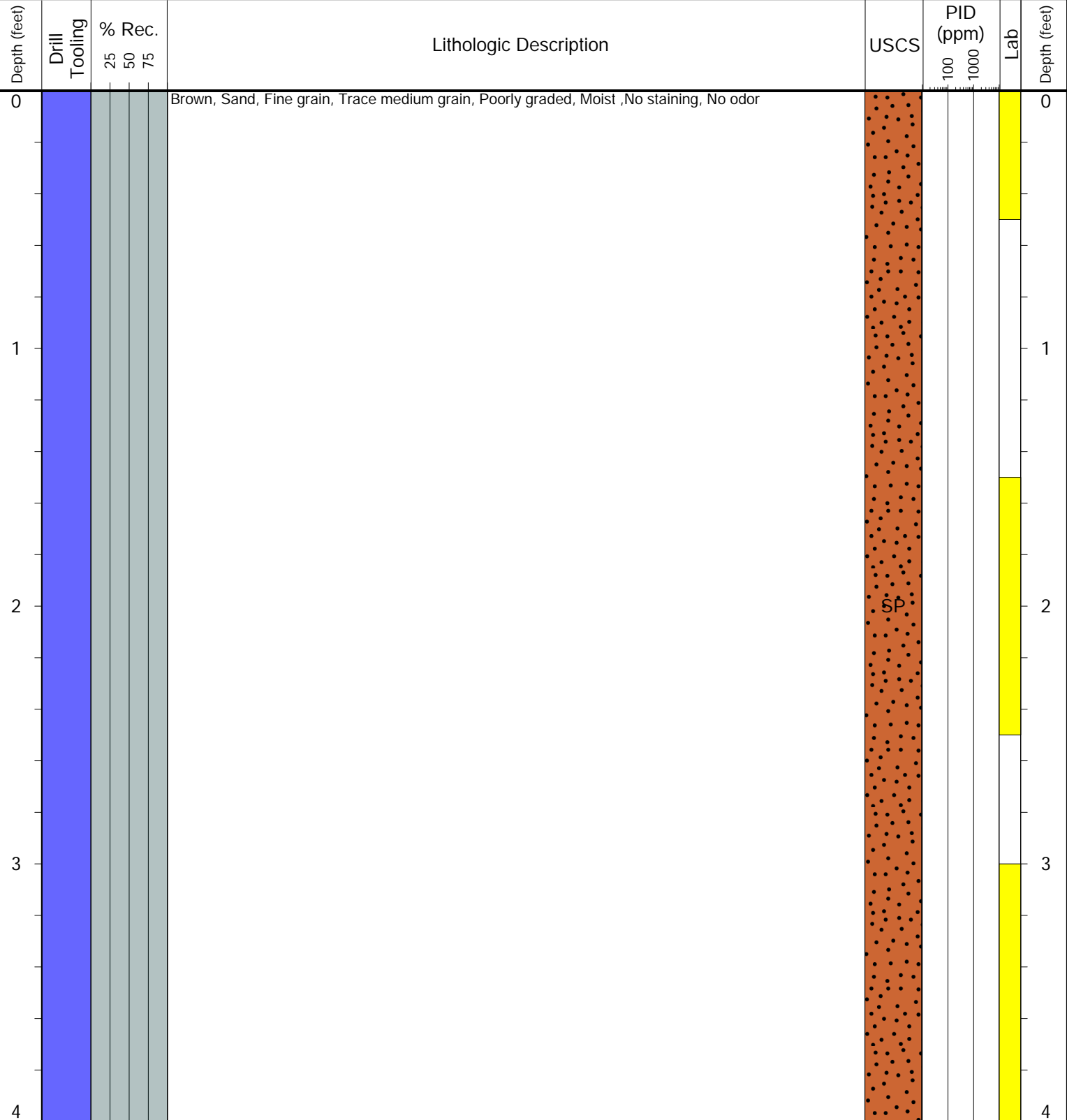
- Geotechnical Lab
- Analytical Chemistry Lab
- Geotechnical & Analytical Chemistry Lab



**CLIENT:** NOBLE  
**LOGGED BY:** Jack Smithe  
**PROJECT MANAGER:** Bryce Goldade  
**DRILLING CONTRACTOR:** Tasman  
**DRILLING EQUIPMENT:** Hand Auger  
**DRILL BIT SIZE (INCHES):** 3"  
**DATE STARTED - COMPLETED:** '7/31/2025  
**TOTAL WELL DEPTH (FT. BGS):** 4  
**DEPTH TO WATER (FT. BGS):** Not Encountered ▼

**Jepsen T3N-R65W-S2 L04**  
**BORING ID:** BH05  
**LOCATION:** W of BH02  
**LATITUDE (NAD 83):** 40.252773  
**LONGITUDE (NAD 83):** -104.638513  
**GROUND ELEVATION (FT. AMSL):** Not Measured  
**ABANDONMENT METHOD:** Native Material

**4725 Independence St.**  
**Wheat Ridge, CO 80033**



**Drilling / Sample Method:**

- Macro-Core
- Hand Auger
- Expendable Well Tip
- HydroPunch Groundwater Sampler

**Laboratory Sample Types:**

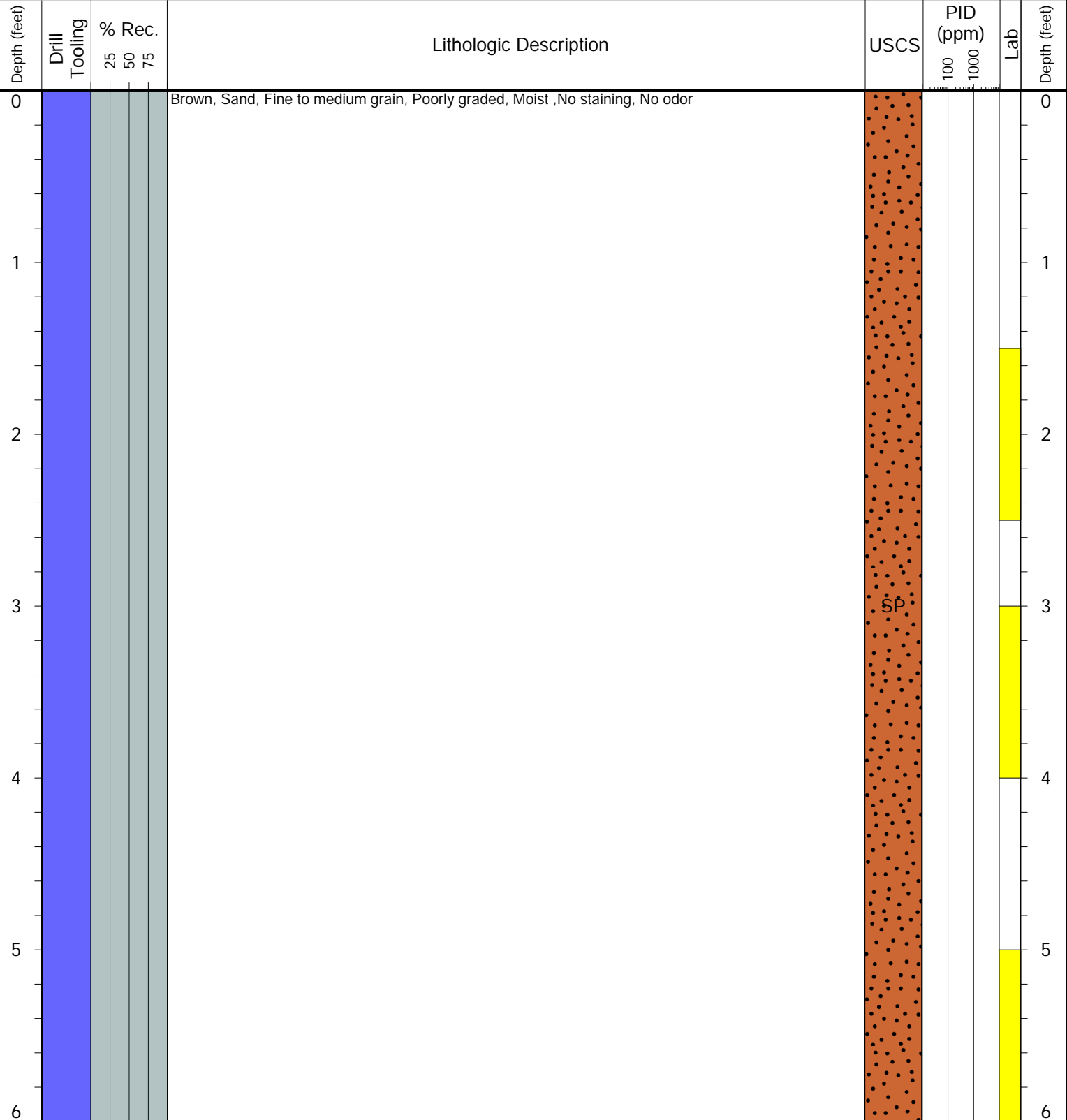
- Geotechnical Lab
- Analytical Chemistry Lab
- Geotechnical & Analytical Chemistry Lab



**CLIENT:** NOBLE  
**LOGGED BY:** Jack Smithe  
**PROJECT MANAGER:** Bryce Goldade  
**DRILLING CONTRACTOR:** Tasman  
**DRILLING EQUIPMENT:** Hand Auger  
**DRILL BIT SIZE (INCHES):** 3"  
**DATE STARTED - COMPLETED:** 7/31/2025  
**TOTAL WELL DEPTH (FT. BGS):** 6  
**DEPTH TO WATER (FT. BGS):** Not Encountered ▼

**Jepsen T3N-R65W-S2 L04**  
**BORING ID:** BH01  
**LOCATION:** Central point  
**LATITUDE (NAD 83):** 40.252781  
**LONGITUDE (NAD 83):** -104.638429  
**GROUND ELEVATION (FT. AMSL):** Not Measured  
**ABANDONMENT METHOD:** Native Material

**4725 Independence St.**  
**Wheat Ridge, CO 80033**



**Drilling / Sample Method:**

- Macro-Core
- Hand Auger
- Expendable Well Tip
- HydroPunch Groundwater Sampler

**Laboratory Sample Types:**

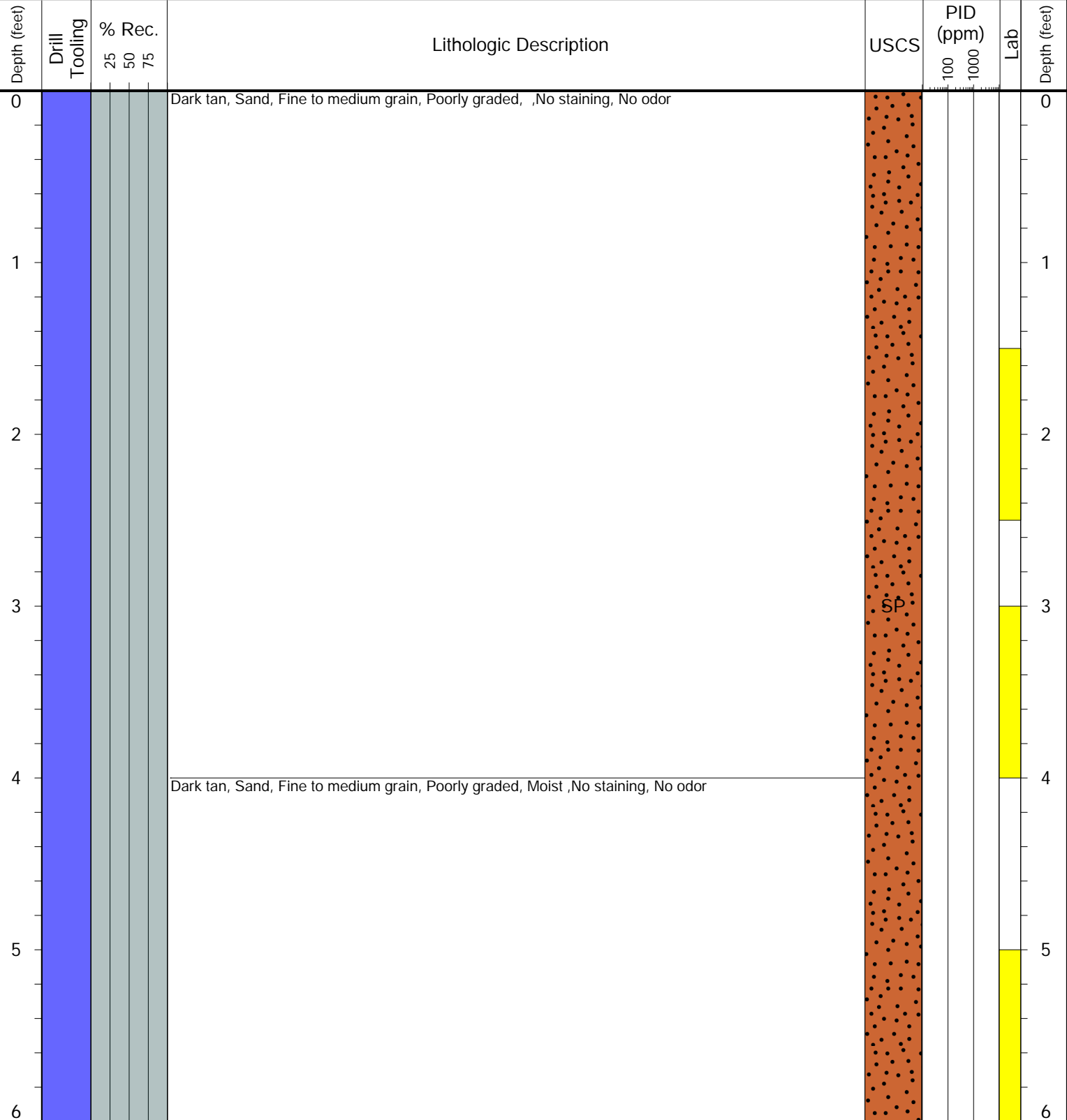
- Geotechnical Lab
- Analytical Chemistry Lab
- Geotechnical & Analytical Chemistry Lab



**CLIENT:** NOBLE  
**LOGGED BY:** Jack Smithe  
**PROJECT MANAGER:** Bryce Goldade  
**DRILLING CONTRACTOR:** Tasman  
**DRILLING EQUIPMENT:** Hand Auger  
**DRILL BIT SIZE (INCHES):** 3"  
**DATE STARTED - COMPLETED:** 7/31/2025  
**TOTAL WELL DEPTH (FT. BGS):** 6  
**DEPTH TO WATER (FT. BGS):** Not Encountered ▼

**Jepsen T3N-R65W-S2 L04**  
**BORING ID:** BH01  
**LOCATION:** Central point  
**LATITUDE (NAD 83):** 40.252781  
**LONGITUDE (NAD 83):** -104.638429  
**GROUND ELEVATION (FT. AMSL):** Not Measured  
**ABANDONMENT METHOD:** Native Material

**4725 Independence St.**  
**Wheat Ridge, CO 80033**



**Drilling / Sample Method:**

- Macro-Core
- Hand Auger
- Expendable Well Tip
- HydroPunch Groundwater Sampler

**Laboratory Sample Types:**

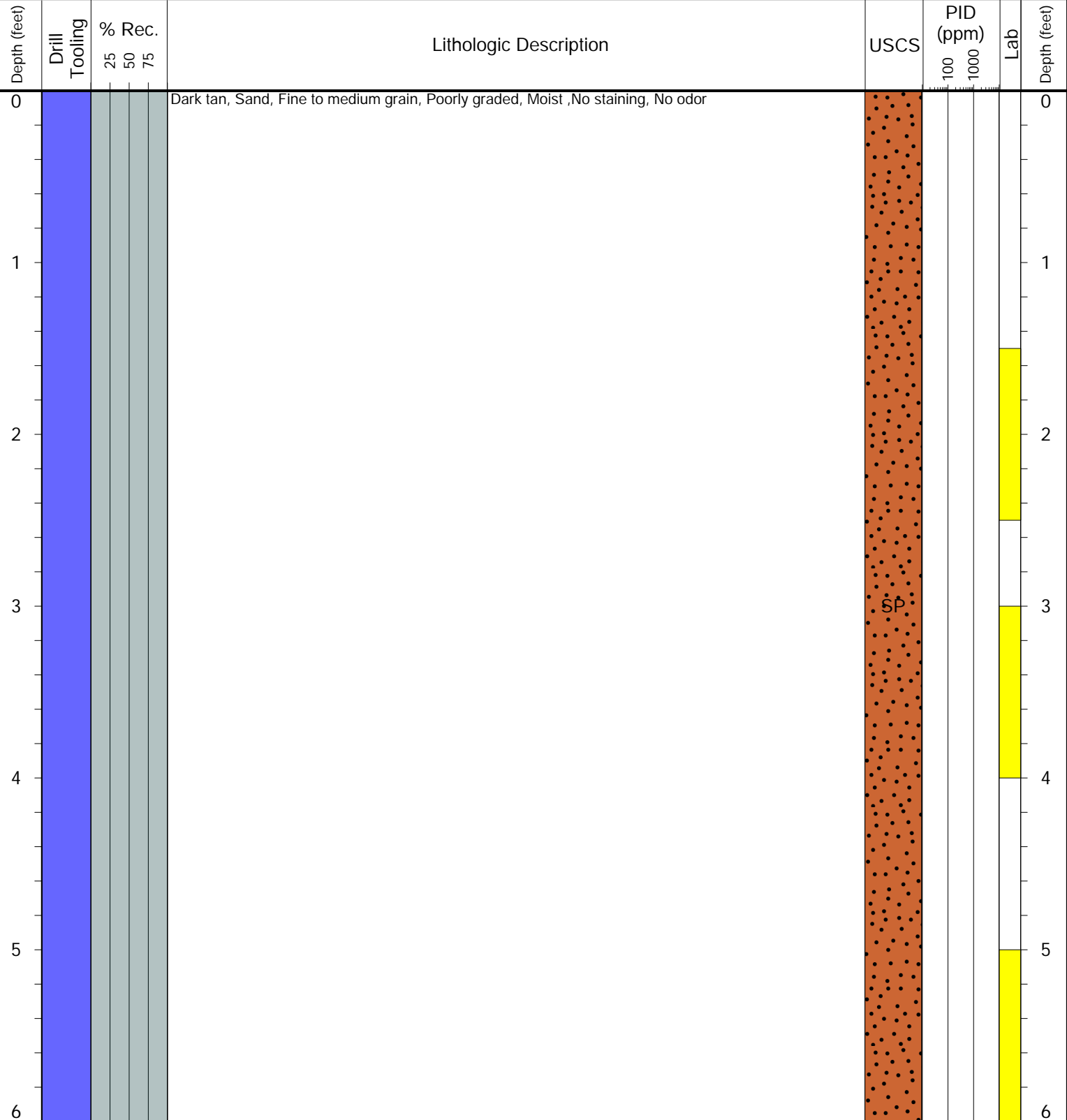
- Geotechnical Lab
- Analytical Chemistry Lab
- Geotechnical & Analytical Chemistry Lab



**CLIENT:** NOBLE  
**LOGGED BY:** Jack Smithe  
**PROJECT MANAGER:** Bryce Goldade  
**DRILLING CONTRACTOR:** Tasman  
**DRILLING EQUIPMENT:** Hand Auger  
**DRILL BIT SIZE (INCHES):** 3"  
**DATE STARTED - COMPLETED:** 7/31/2025  
**TOTAL WELL DEPTH (FT. BGS):** 6  
**DEPTH TO WATER (FT. BGS):** Not Encountered ▼

**Jepsen T3N-R65W-S2 L04**  
**BORING ID:** BH01  
**LOCATION:** Central point  
**LATITUDE (NAD 83):** 40.252781  
**LONGITUDE (NAD 83):** -104.638429  
**GROUND ELEVATION (FT. AMSL):** Not Measured  
**ABANDONMENT METHOD:** Native Material

**4725 Independence St.**  
**Wheat Ridge, CO 80033**



**Drilling / Sample Method:**

- Macro-Core
- Hand Auger
- Expendable Well Tip
- HydroPunch Groundwater Sampler

**Laboratory Sample Types:**

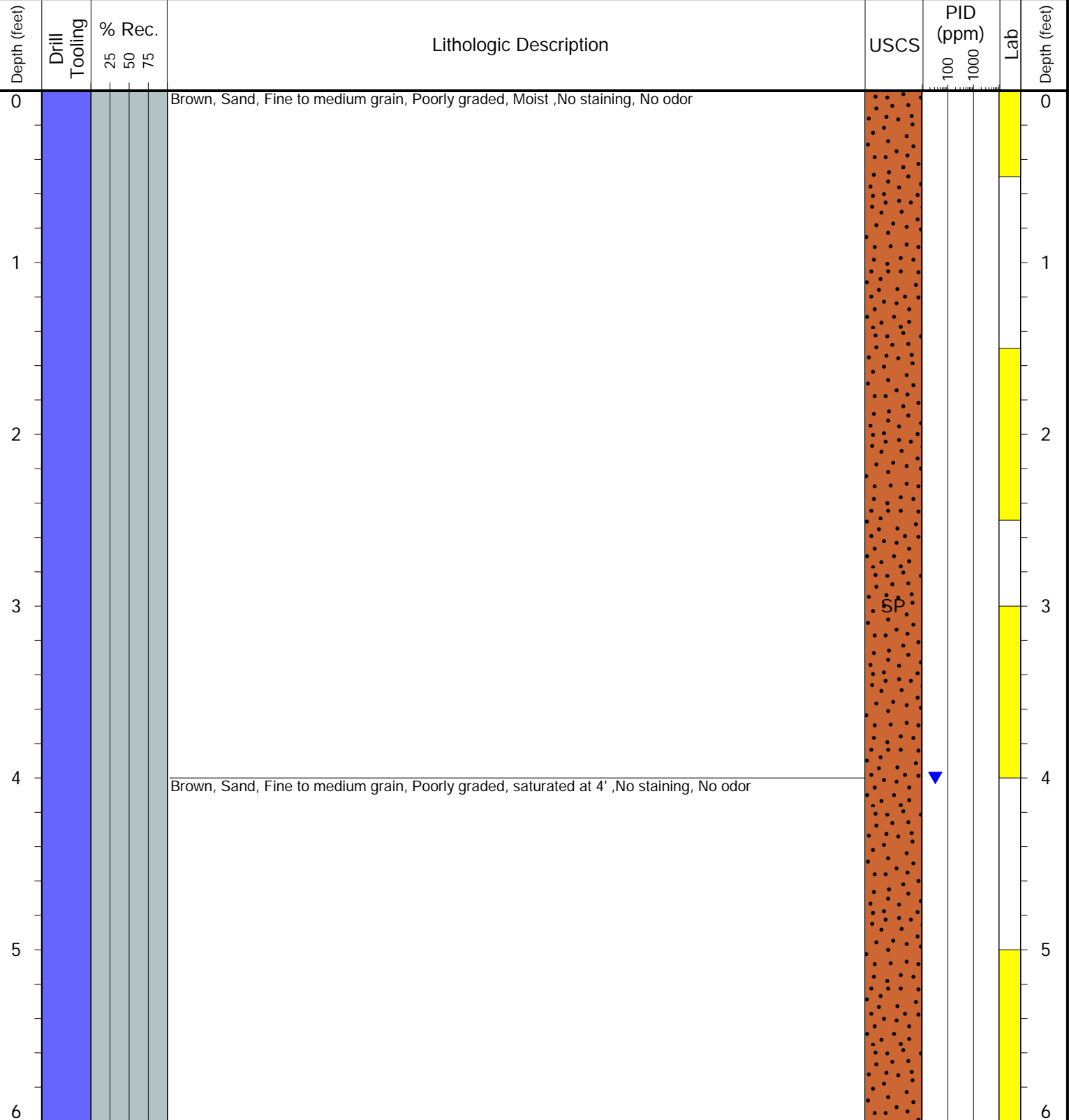
- Geotechnical Lab
- Analytical Chemistry Lab
- Geotechnical & Analytical Chemistry Lab



**CLIENT:** NOBLE  
**LOGGED BY:** Jack Smithe  
**PROJECT MANAGER:** Bryce Goldade  
**DRILLING CONTRACTOR:** Tasman  
**DRILLING EQUIPMENT:** Hand Auger  
**DRILL BIT SIZE (INCHES):** 3"  
**DATE STARTED - COMPLETED:** '7/31/2025  
**TOTAL WELL DEPTH (FT. BGS):** 6  
**DEPTH TO WATER (FT. BGS):** 4

**Jepsen T3N-R65W-S2 L04**  
**BORING ID:** BKG06  
**LOCATION:** NE of BH01  
**LATITUDE (NAD 83):** 40.252988  
**LONGITUDE (NAD 83):** -104.638113  
**GROUND ELEVATION (FT. AMSL):** Not Measured  
**ABANDONMENT METHOD:** Native Material

**4725 Independence St.**  
**Wheat Ridge, CO 80033**



**Drilling / Sample Method:**

- Macro-Core
- Hand Auger
- Expendable Well Tip
- HydroPunch Groundwater Sampler

**Laboratory Sample Types:**

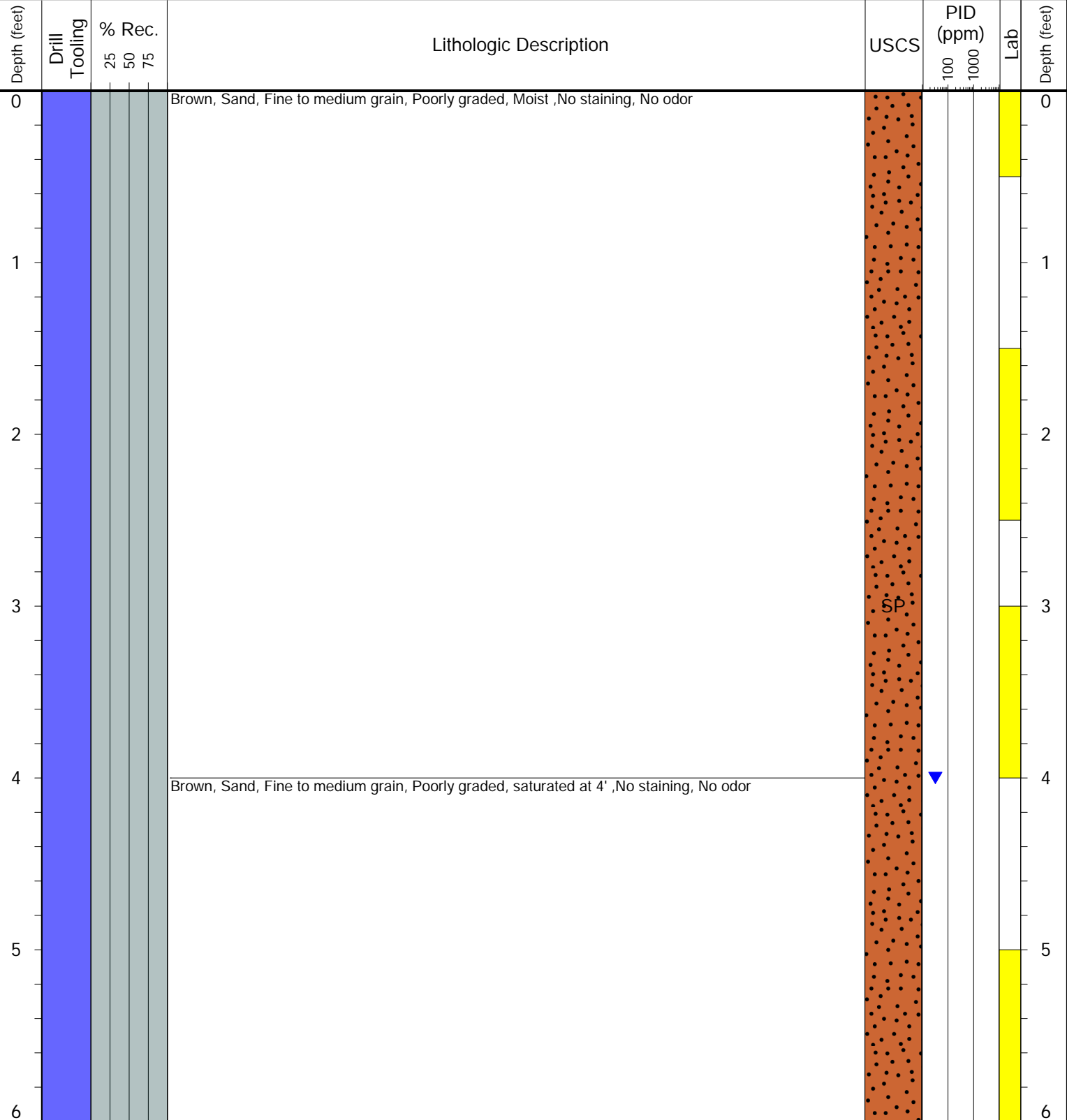
- Geotechnical Lab
- Analytical Chemistry Lab
- Geotechnical & Analytical Chemistry Lab



**CLIENT:** NOBLE  
**LOGGED BY:** Jack Smithe  
**PROJECT MANAGER:** Bryce Goldade  
**DRILLING CONTRACTOR:** Tasman  
**DRILLING EQUIPMENT:** Hand Auger  
**DRILL BIT SIZE (INCHES):** 3"  
**DATE STARTED - COMPLETED:** '7/31/2025  
**TOTAL WELL DEPTH (FT. BGS):** 6  
**DEPTH TO WATER (FT. BGS):** 4

**Jepsen T3N-R65W-S2 L04**  
**BORING ID:** BKG07  
**LOCATION:** E of BH01  
**LATITUDE (NAD 83):** 40.252919  
**LONGITUDE (NAD 83):** -104.637975  
**GROUND ELEVATION (FT. AMSL):** Not Measured  
**ABANDONMENT METHOD:** Native Material

**4725 Independence St.**  
**Wheat Ridge, CO 80033**



**Drilling / Sample Method:**  
 Macro-Core  
 Hand Auger  
 Expendable Well Tip  
 HydroPunch Groundwater Sampler

**Laboratory Sample Types:**  
 Geotechnical Lab  
 Analytical Chemistry Lab  
 Geotechnical & Analytical Chemistry Lab