



PA Wellbore For State - Vertical

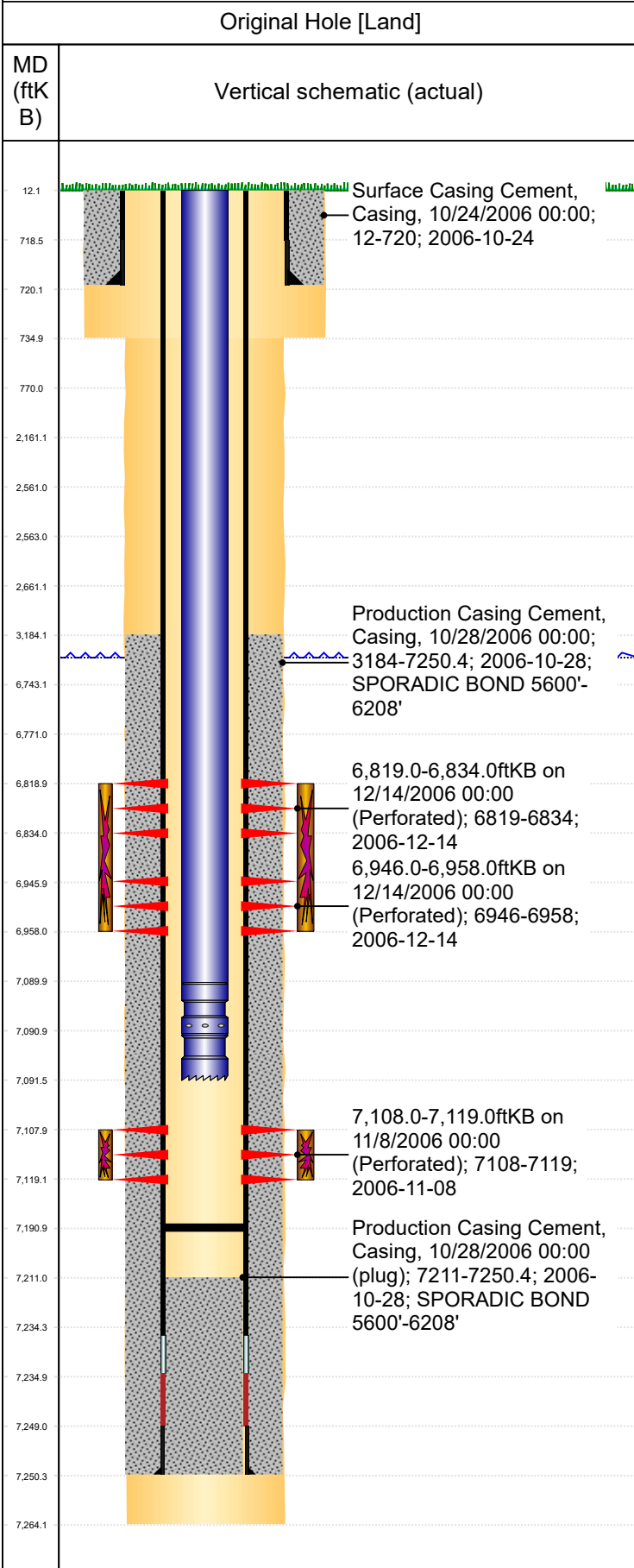
Well Name: PETTINGER USX AB27-07

Original Hole [Land]		Well Header			
MD (ftK B)	Vertical schematic (actual)	Surface UWI	Business Unit	Gov Auth Dist	Prod Tree Loc
		0512324279	Rockies		Land
		Orig. KB to Gnd (ft)	Original Spud Date	Abandon Date	Well Sub-Status
		12.00	10/23/2006		SI
		Comment PUSH FP TO 7191			
		Geologic Horizons			
		Formation Name			Final Top MD (ftKB)
		FOX HILLS BASE EST			
		Formation Name			Final Top MD (ftKB)
		FOX HILLS BASE EST			630.0
		Formation Name			Final Top MD (ftKB)
		UPPER PIERRE AQUIFER-TOP PROD			744.8
		Formation Name			Final Top MD (ftKB)
		NIOBRARA-TOP PROD			6,819.6
		Formation Name			Final Top MD (ftKB)
		A SAND-BASE PROD			3,175.8
		Formation Name			Final Top MD (ftKB)
		CARLILE			7,121.2
		Formation Name			Final Top MD (ftKB)
		SHARON SPRING MKR			6,789.1
		Formation Name			Final Top MD (ftKB)
		SUSSEX-BASE PROD			4,722.1
		Formation Name			Final Top MD (ftKB)
		NIO D CHALK			7,063.2
		Formation Name			Final Top MD (ftKB)
		NIO A CHALK			6,817.8
		Formation Name			Final Top MD (ftKB)
		PARKMAN-BASE PROD			4,222.7
		Formation Name			Final Top MD (ftKB)
		INTRA SHARON SPGS MK			6,788.9
		Formation Name			Final Top MD (ftKB)
		SHANNON-TOP PROD			5,160.3
		Formation Name			Final Top MD (ftKB)
		NIO C MARL			7,041.2
		Formation Name			Final Top MD (ftKB)
		A SAND-TOP PROD			2,681.2
		Formation Name			Final Top MD (ftKB)
		NIO A MARL			6,835.4
		Formation Name			Final Top MD (ftKB)
		SUSSEX-TOP PROD			4,343.2
		Formation Name			Final Top MD (ftKB)
		NIO C CHALK			6,997.7
		Formation Name			Final Top MD (ftKB)
		SHANNON-BASE PROD			5,252.7
		Formation Name			Final Top MD (ftKB)
		PARKMAN-TOP PROD			3,775.8
		Formation Name			Final Top MD (ftKB)
		NIO B MARL			6,959.3
		Formation Name			Final Top MD (ftKB)
		FOXHILLS-BASE PROD			590.1
		Formation Name			Final Top MD (ftKB)
		NIO FT HAYS			7,083.3
		Formation Name			Final Top MD (ftKB)
		NIO B CHALK			6,926.0
		Formation Name			Final Top MD (ftKB)
		UPPER PIERRE AQUIFER-BASE PROD			1,760.5
		Formation Name			Final Top MD (ftKB)
		CODELL			7,107.0
		Formation Name			Final Top MD (ftKB)
		NIOBRARA			6,802.0
		Formation Name			Final Top MD (ftKB)
		PIERRE			2,998.0
		Formation Name			Final Top MD (ftKB)
		PARKMAN			3,772.7
		Formation Name			Final Top MD (ftKB)
		SUSSEX			4,588.0
		Formation Name			Final Top MD (ftKB)
		SHANNON			5,152.0
		Formation Name			Final Top MD (ftKB)
		TEEPEE BUTTES			5,924.0
		Formation Name			Final Top MD (ftKB)
		NIOBRARA A			6,818.0
		Formation Name			Final Top MD (ftKB)
		NIOBRARA B			6,926.0
		Formation Name			Final Top MD (ftKB)
		NIOBRARA C			6,998.0



PA Wellbore For State - Vertical

Well Name: PETTINGER USX AB27-07



Geologic Horizons									
Formation Name FORT HAYS								Final Top MD (ftKB) 7,083.0	
Formation Name GREENHORN								Final Top MD (ftKB) 7,184.0	
Surface Location (Congressional)									
Qtr 3 SW	Qtr 4 NE	Section 27	Twonshp 7	Twonsh... N	Range 64	Rng E... W	Latitude (°) 40.54556548 4	Longitude (°) -104.534178625	
Wellbore Sections									
Section Des		Hole Size (in)		Top Depth (ftKB)		Btm Depth (ftKB)			
SURFACE		12 1/4		12.0		735.0			
PRODUCTION		7 7/8		735.0		7,264.0			
Casing Strings									
Csg Des		Run Date	OD (in)	Wt/Len (lb/ft)	Grade	Top Depth (MD) (ftKB)	Set Depth (MD) (ftKB)		
Surface		10/24/2006	8 5/8	24.00	J-55	12	720		
Production Casing		10/28/2006	4 1/2	11.60	M-80	12	7250.4		
Cement									
Des				Start Date	Top (ftKB)	Btm (ftKB)			
Surface Casing Cement				10/24/2006	12.0	720.0			
Production Casing Cement				10/28/2006	3,184.0	7,250.4			
Stim/Frac Summary									
Min Top Depth (ftKB) 6,819.0					Max Btm Depth (ftKB) 7,119.0				
Perforations									
Linked Zone		Date	Top Depth (ftKB)	Bottom Depth (ftKB)					
NIOBRARA, Original Hole		12/14/2006 00:00	6,819.0	6,834.0					
NIOBRARA, Original Hole		12/14/2006 00:00	6,946.0	6,958.0					
CODELL, Original Hole		11/8/2006 00:00	7,108.0	7,119.0					
Other In Hole									
Run Date	Des		Make	OD (in)	Top (ftKB)	Btm (ftKB)			
Logs									
Date	Type				Depth Top (MD) (ftKB)	Btm (ftKB)			
10/28/2006	COMPENSATED DENSITY				2,620	7,244.0			
10/28/2006	INDUCTION				720	7,264.0			
11/7/2006	CBL/CCL/GR				3,071	7,209.0			
Wellbore Plug Back Total Depths									
Date	Type	Com				PBTD (ftKB)			
11/7/2006	FILL	DEPTH LOGGER ON CBL				7,211			
1/2/2007	PLUG REMNANTS	DRILL CIPF AND CLEAN OUT TO 7191'				7,191			