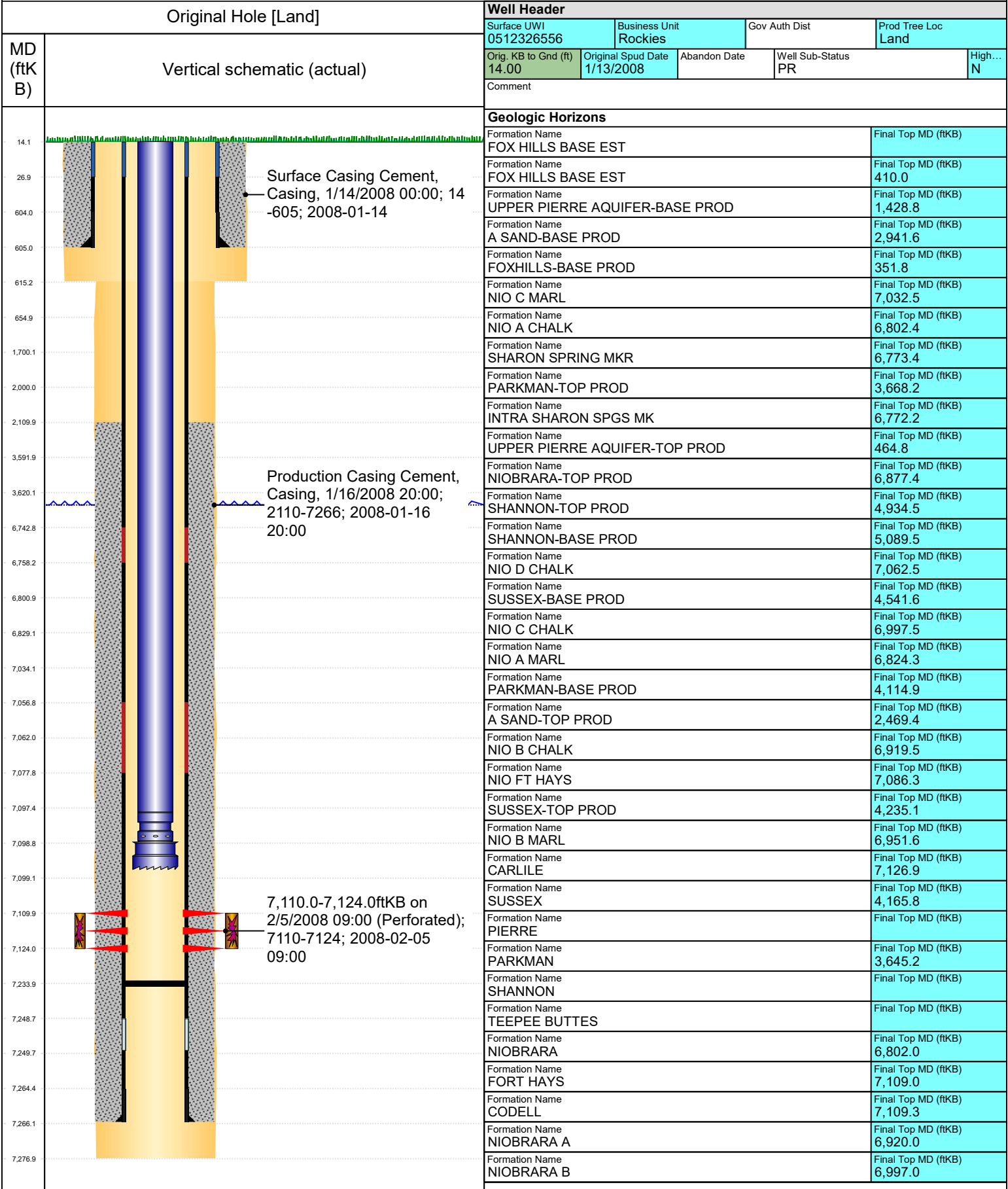




PA Wellbore For State - Vertical

Well Name: HUNGENBERG E21-25



Surface Casing Cement,
Casing, 1/14/2008 00:00; 14
-605; 2008-01-14

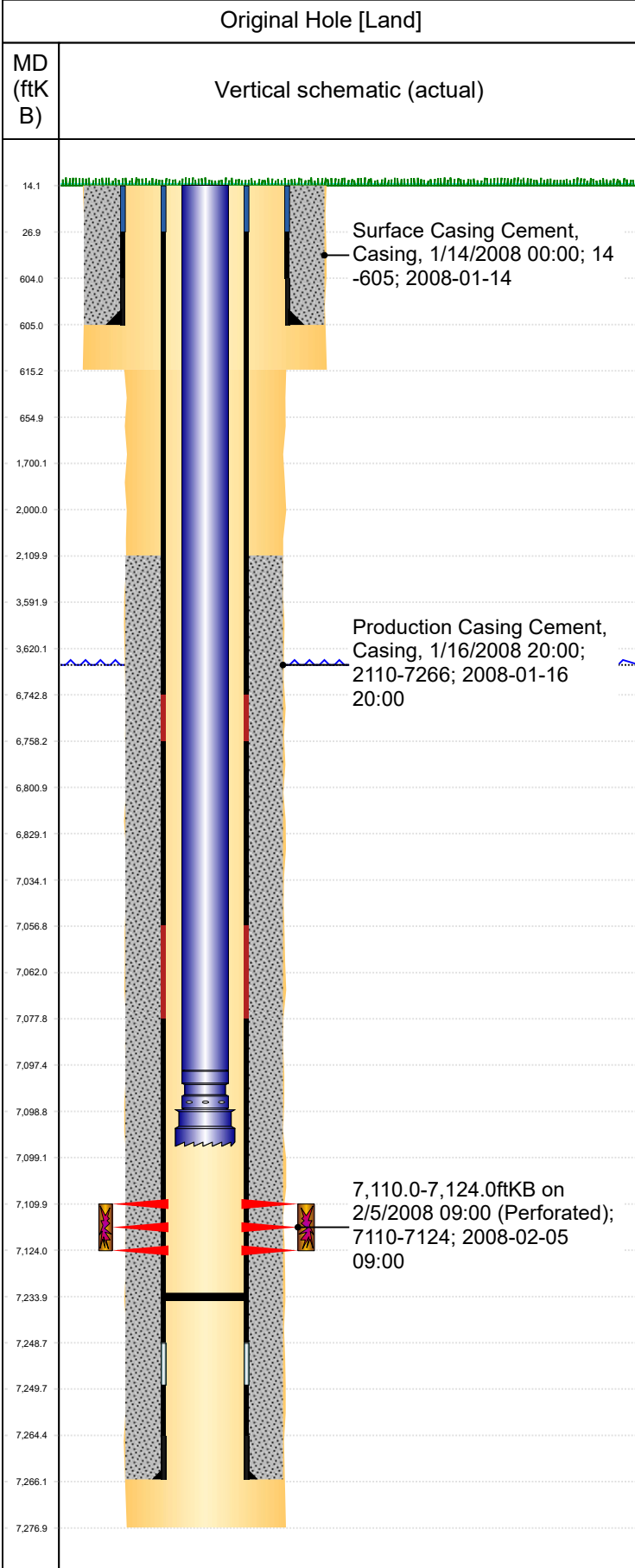
Production Casing Cement,
Casing, 1/16/2008 20:00;
2110-7266; 2008-01-16
20:00

7,110.0-7,124.0ftKB on
2/5/2008 09:00 (Perforated);
7110-7124; 2008-02-05
09:00



PA Wellbore For State - Vertical

Well Name: HUNGENBERG E21-25



Original Hole [Land]		Geologic Horizons	
Vertical schematic (actual)		Formation Name NIOBRARA C	Final Top MD (ftKB) 7,086.0
		Formation Name GREENHORN	Final Top MD (ftKB) 7,193.0
Surface Location (Congressional)			
Qtr 3 NW	Qtr 4 SW	Section 21	Twntshp 6
Twntsh... N	Range 65	Rng E/... W	Latitude (°) 40.46867549 9
			Longitude (°) -104.673634741
Wellbore Sections			
Section Des	Hole Size (in)	Top Depth (ftKB)	Btm Depth (ftKB)
SURFACE	12 1/4	14.0	615.0
PRODUCTION	7 7/8	615.0	7,277.0
Casing Strings			
Csg Des	Run Date	OD (in)	Wt/Len (lb/ft)
Surface	1/13/2008	8 5/8	24.00
Production Casing	1/16/2008	4 1/2	11.60
Grade	Top Depth (MD) (ftKB)	Set Depth (MD) (ftKB)	
J-55	14	605	
M-80	14	7266	
Cement			
Des	Start Date	Top (ftKB)	Btm (ftKB)
SURFACE CASING CEMENT	1/14/2008	14.0	605.0
PRODUCTION CASING CEMENT	1/16/2008	2,110.0	7,266.0
Stim/Frac Summary			
Min Top Depth (ftKB)	Max Btm Depth (ftKB)		
7,110.0	7,124.0		
Perforations			
Linked Zone	Date	Top Depth (ftKB)	Bottom Depth (ftKB)
CODELL, Original Hole	2/5/2008 09:00	7,110.0	7,124.0
Other In Hole			
Run Date	Des	Make	OD (in)
Logs			
Date	Type	Depth Top (MD) (ftKB)	Btm (ftKB)
1/16/2008	Caliper/Comp.Density/Neutron/GR/SP/ML	2,650	7,255.0
1/16/2008	DIL/GR/SP/Caliper	605	7,275.0
2/4/2008	CBL/CCL/GR	1,960	7,234.0
10/24/2018	GYRO	14	7,000.0
Wellbore Plug Back Total Depths			
Date	Type	Com	PBTD (ftKB)
1/16/2008	FLOAT COLLAR	TOP OF FLOAT COLLAR	7,250
2/4/2008	FILL	CBL DEPTH LOGGER	7,234