



CEMENT BOND GAMMA RAY COLLAR CORRELATION LOG

Company NOBLE ENERGY INC.
 Well ROMERO G 03-29 D
 Field WATTENBERG
 County WELD
 State COLORADO

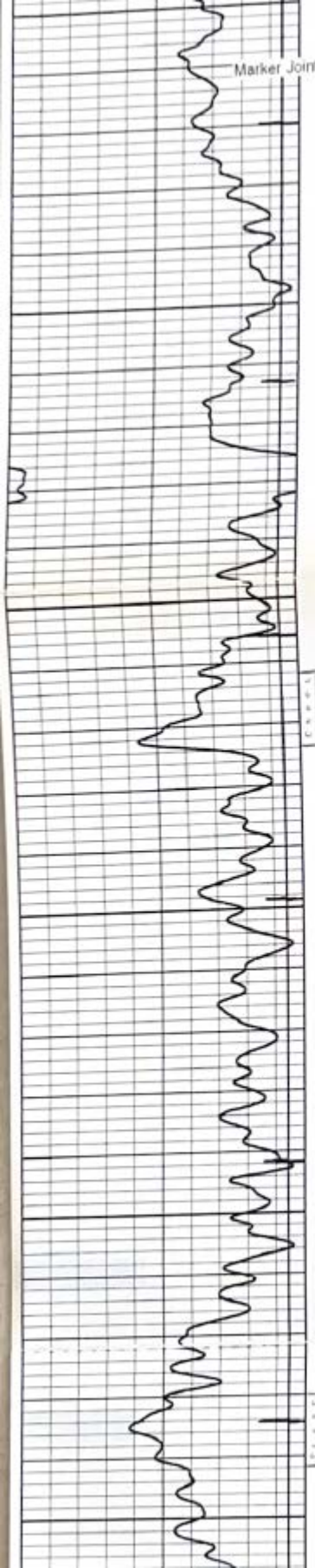
Company NOBLE ENERGY INC.
 Well ROMERO G 03-29 D
 Field WATTENBERG
 County WELD State COLORADO

Location: API # : 05-123-30855-00 SHL: 573' FNL & 556' FWL NW/NW SEC. 3 TWP. 4N RGE 65W BHL: 76' FSL & 1305' FWL SW/SW SEC 34 TWP 5N RGE 65W	Other Services NONE
Permanent Datum GROUND LEVEL Elevation 4670 Log Measured From KELLY BUSHING Drilling Measured From KELLY BUSHING	Elevation K.B. 4683 D.F. 4683 G.L. 4670

Date	29-APRIL-2010
Run Number	ONE
Depth Driller	7321
Depth Logger	7246
Bottom Logged Interval	7245
Top Log Interval	1480
Open Hole Size	7 7/8
Type Fluid	WATER
Density / Viscosity	---
Max. Recorded Temp.	245
Estimated Cement Top	1620
Time Well Ready	---
Time Logger on Bottom	---
Equipment Number	2405/TECKO
Location	BRIGHTON
Recorded By	HAYES
Witnessed By	MR. ED LUCK

Borehole Record				Tubing Record			
Run Number	Bit	From	To	Size	Weight	From	To
Casing Record		Size	Wgt/Ft	Top		Bottom	
Surface String		8 5/8	32 #	SURFACE		552	
Prot. String							
Production String		4 5	11 6 #	SURFACE		7309	
Liner							

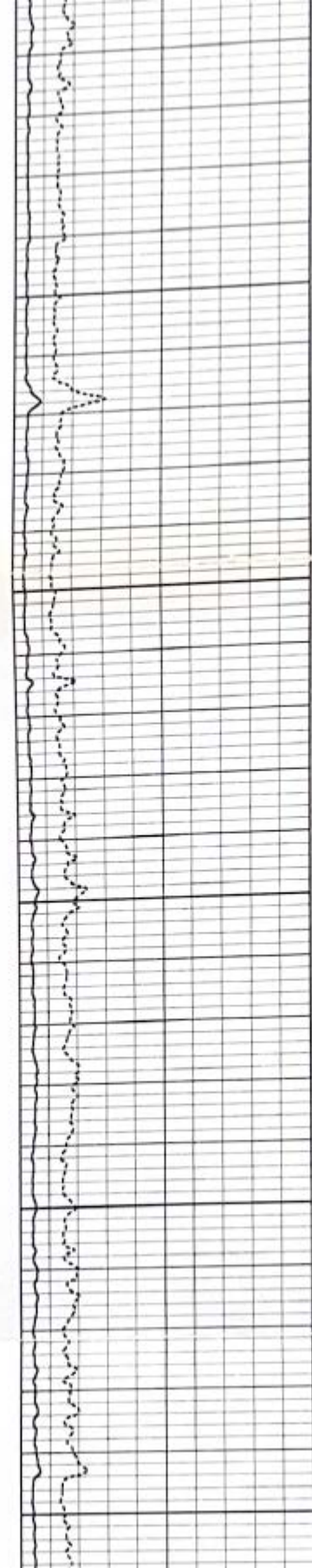
<<< Fold Here >>>



6800

6900

7000



Database File: romero g 03-29d db
 Dataset Pathname: pass2
 Presentation Format: cbk
 Dataset Creation: Thu Apr 29 10 06 58 2010 by Log Std Casedhole 08121
 Charted by: Depth in Feet scaled 1 240

0	GAMMA RAY (GAPI)	200
12	CCL	-0.75
300	TT3 (usec)	200

0	AMPLITUDE (mV)	100	200
0	AMPLIFIED AMPLITUDE (mV)	30	

Variable Density 1200

