

Project: Mesa County, CO
 Site: Currier 0993-16-07 Pad
 Well: Currier BCU 0993-16-14W
 Wellbore: OH
 Design: Design #3
 Latitude: 39.277893
 Longitude: -107.773524
 Ground Level: 7457.0
 RKB=30' @ 7487.0usft (TBD)

PROJECT DETAILS: Mesa County, CO
 Geodetic System: US State Plane 1983
 Datum: North American Datum 1983
 Ellipsoid: GRS 1980
 Zone: Colorado Central Zone
 System Datum: Mean Sea Level

REFERENCE INFORMATION
 Vertical (TVD) Reference: RKB=30' @ 7487.0usft (TBD)
 Section (VS) Reference: Slot - 16-14W(0.0N, 0.0E)
 Measured Depth Reference: RKB=30' @ 7487.0usft (TBD)
 Calculation Method: Minimum Curvature

SECTION DETAILS

MD	Inc	Azi	TVD	+N/-S	+E/-W	Dleg	TFace	VSec	Annotation
0.0	0.00	0.00	0.0	0.0	0.0	0.00	0.00	0.0	
200.0	0.00	0.00	200.0	0.0	0.0	0.00	0.00	0.0	KOP (Build 2.5° / 100)
480.0	7.00	175.00	479.3	-17.0	1.5	2.50	175.00	15.5	EOB @ 7.00° Inc. / 175.00° Azm : Build 2.5° / 100'
1521.2	32.17	200.90	1453.5	-344.8	-93.5	2.50	32.00	355.9	EOB @ 32.17° Inc. / 200.90° Azm
5295.9	0.00	0.00	5295.9	-2222.2	-810.3	0.00	0.00	2365.3	Drop 2.5° / 100'
6582.6	0.00	0.00	5869.0	-2550.8	-935.8	2.50	180.00	2717.1	EOD @ Vertical
9382.6	0.00	0.00	8669.0	-2550.8	-935.8	0.00	0.00	2717.1	TD @ 9382.6' MD / 8669.0' TVD

FORMATION TOP DETAILS

TVDPath	MDPath	Formation
2722.0	3019.7	Wasatch 'G' Sand
3171.0	3550.1	Fort Union
3950.0	4470.3	Lower Wasatch
4676.0	5327.8	Ohio Creek
5089.0	5786.7	Williams Fork
5869.0	6582.6	TOG
7132.0	7845.6	Cameo
7630.0	8343.6	Rollins
8160.0	8873.6	Cozzette
8322.0	9035.6	Corcoran
8494.0	9207.6	Mancos
8669.0	9382.6	TD

Azimuths to True North
 Magnetic North: 8.67°

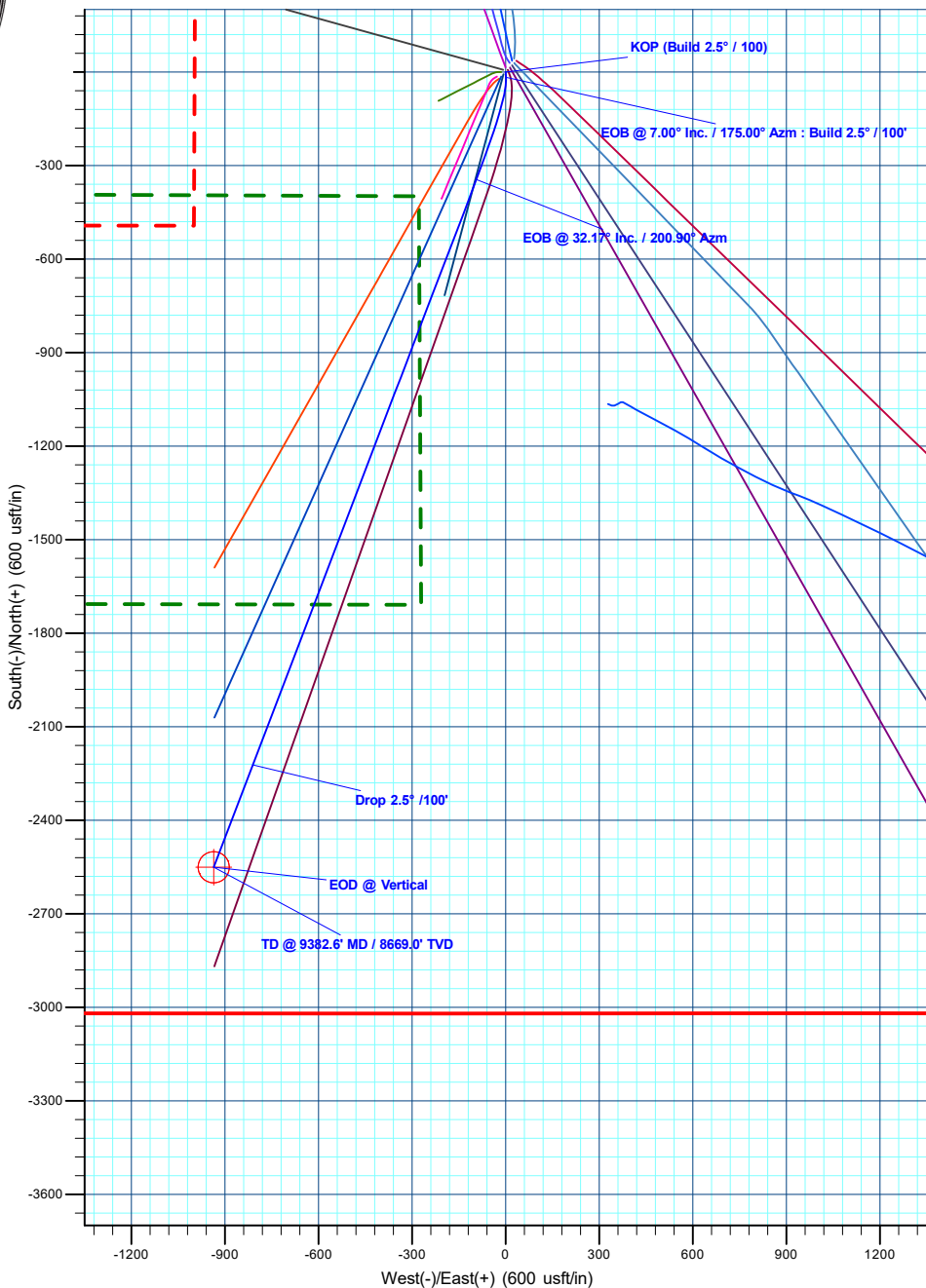
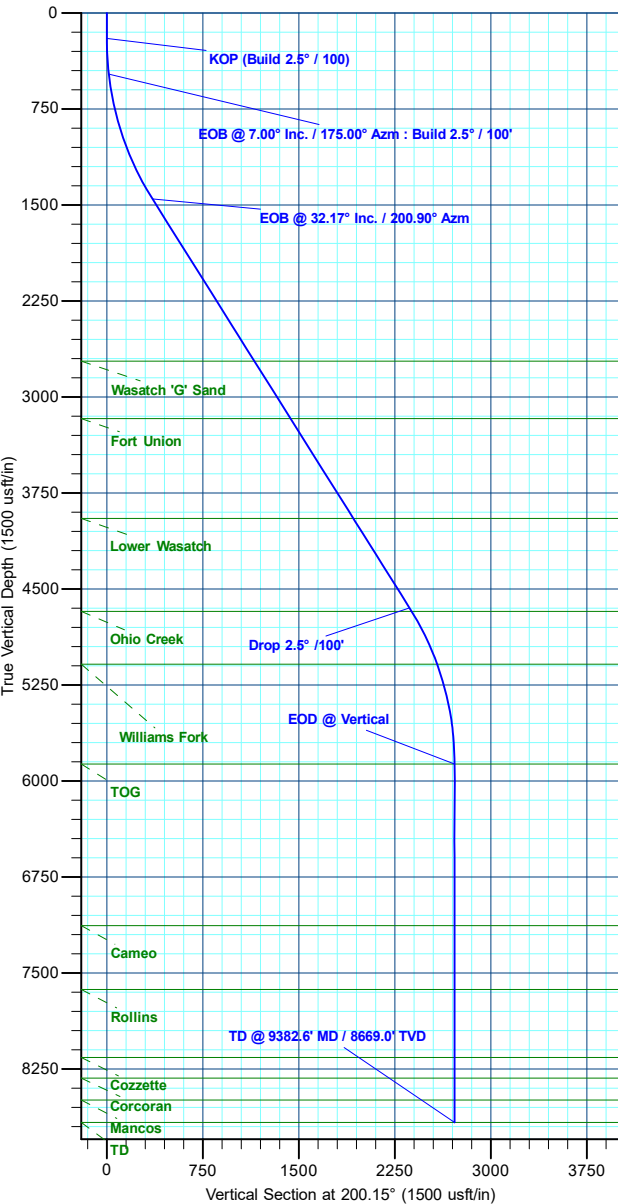
Magnetic Field
 Strength: 50850.7nT
 Dip Angle: 65.13°
 Date: 7/13/2023
 Model: HDGM2025

DESIGN TARGET DETAILS

Name	TVD	+N/-S	+E/-W	Northing	Easting	Latitude	Longitude
PBHL - Currier BCU 0993-16-14W	8669.0	-2550.8	-935.8	1531632.12	2355490.31	39.270890	-107.776829

WELL DETAILS: Currier BCU 0993-16-14W

+N/-S	+E/-W	Ground Level	Northing	Easting	Latitude	Longitude
0.0	0.0	7457.0	1534158.75	2356489.63	39.277893	-107.773524 16-14W



Plan: Design #3 (Currier BCU 0993-16-14W/OH)

Created By: Will Jircik

Date: 15:14, September 23 2025