

Project: Mesa County, CO  
 Site: Currier 0993-16-07 Pad  
 Well: Currier BCU Fed 0993-16-12W  
 Wellbore: OH  
 Design: Design #3  
 Latitude: 39.277834  
 Longitude: -107.773597  
 Ground Level: 7457.0  
 RKB=30' @ 7487.0usft (TBD)

PROJECT DETAILS: Mesa County, CO  
 Geodetic System: US State Plane 1983  
 Datum: North American Datum 1983  
 Ellipsoid: GRS 1980  
 Zone: Colorado Central Zone  
 System Datum: Mean Sea Level

REFERENCE INFORMATION  
 Vertical (TVD) Reference: RKB=30' @ 7487.0usft (TBD)  
 Section (VS) Reference: Slot - 16-12W(0.0N, 0.0E)  
 Measured Depth Reference: RKB=30' @ 7487.0usft (TBD)  
 Calculation Method: Minimum Curvature

SECTION DETAILS

| MD     | Inc   | Azi    | TVD    | +N/-S   | +E/-W  | Dleg | TFace  | VSec   | Annotation                                       |
|--------|-------|--------|--------|---------|--------|------|--------|--------|--|
| 0.0    | 0.00  | 0.00   | 0.0    | 0.0     | 0.0    | 0.00 | 0.00   | 0.0    |  |
| 190.0  | 0.00  | 0.00   | 190.0  | 0.0     | 0.0    | 0.00 | 0.00   | 0.0    | KOP (Build 2' / 100)                             |
| 440.0  | 5.00  | 235.00 | 439.7  | -6.3    | -8.9   | 2.00 | 235.00 | 9.9    | EOB @ 5.00° Inc. / 235.00° Azm : Build 2' / 100' |
| 1301.2 | 21.61 | 209.53 | 1275.3 | -167.0  | -118.7 | 2.00 | -32.33 | 204.0  | EOB @ 21.61° Inc. / 209.53° Azm                  |
| 5126.8 | 21.61 | 209.53 | 4832.0 | -1392.8 | -813.1 | 0.00 | 0.00   | 1612.8 | Drop 2' /100'                                    |
| 6207.2 | 0.00  | 0.00   | 5887.0 | -1568.0 | -912.4 | 2.00 | 180.00 | 1814.1 | EOD @ Vertical                                   |
| 9007.2 | 0.00  | 0.00   | 8687.0 | -1568.0 | -912.4 | 0.00 | 0.00   | 1814.1 | TD @ 9007.2' MD / 8687.0' TVD                    |

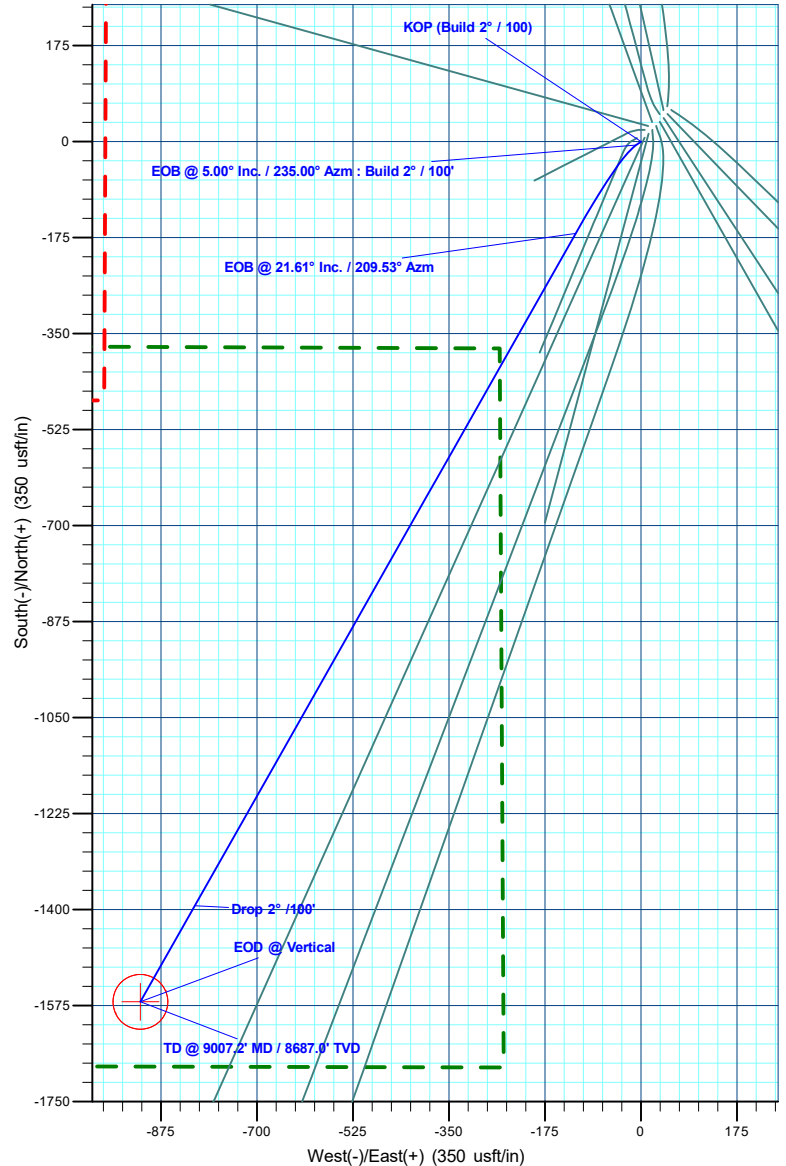
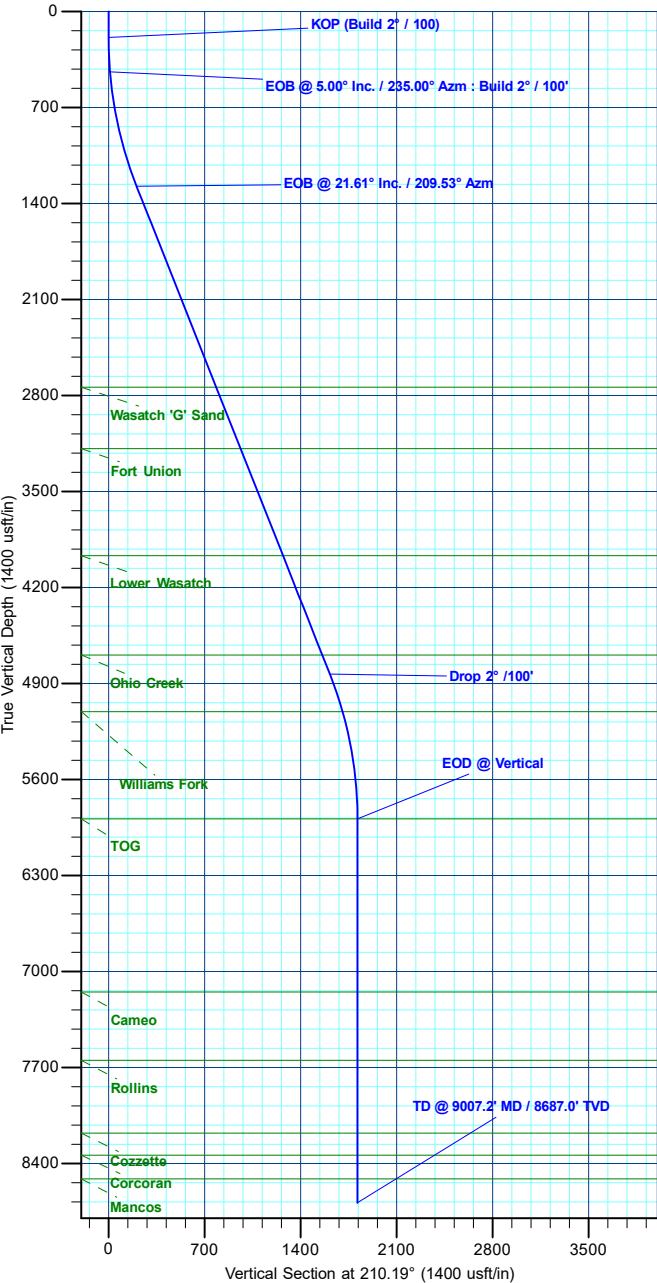
DESIGN TARGET DETAILS

| Name                               | TVD    | +N/-S   | +E/-W  | Northing   | Easting    | Latitude  | Longitude   |
|------------------------------------|--------|---------|--------|------------|------------|-----------|-------------|
| PBHL - Currier BCU FED 0993-16-12W | 8687.0 | -1568.0 | -912.4 | 1532592.94 | 2355517.03 | 39.273529 | -107.776820 |

WELL DETAILS: Currier BCU Fed 0993-16-12W

| +N/-S | +E/-W | Ground Level : 7457.0 | Northing   | Easting    | Latitude  | Longitude          |
|-------|-------|-----------------------|------------|------------|-----------|--------------------|
| 0.0   | 0.0   |                       | 1534137.60 | 2356468.34 | 39.277834 | -107.773597 16-12W |

**T M**  
 Azimuths to True North  
 Magnetic North: 8.67°  
 Magnetic Field  
 Strength: 50850.7nT  
 Dip Angle: 65.13°  
 Date: 7/13/2023  
 Model: HDGM2025



Plan: Design #3 (Currier BCU Fed 0993-16-12W/OH)

Created By: Will Jircik

Date: 15:23, September 23 2025