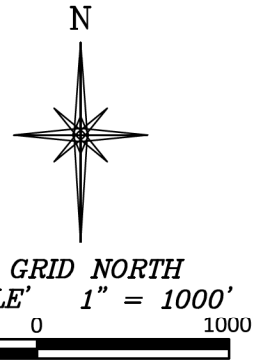


CURRIER
0993-16-01M
 UNGRADED ELEVATION:
 7465.3'

R. 93 W.



T. 9 S.
 SHL
LATITUDE (NAD 83)
 NORTH 39.278011 DEG.
LONGITUDE (NAD 83)
 WEST 107.773427 DEG.
NORTHING (NAD 83)
 1534201.08
EASTING (NAD 83)
 2356518.07
 BHL/TPZ
LATITUDE (NAD 83)
 NORTH 39.283559 DEG.
LONGITUDE (NAD 83)
 WEST 107.774539 DEG.
NORTHING (NAD 83)
 1536229
EASTING (NAD 83)
 2356254

BASIS OF BEARING/DATUM
 SPCS CO CENTRAL ZONE NAD 27 BASED ON GPS STATIC OBSERVATIONS AND OPUS SOLUTION ON DRG CONTROL POINT "CP 16-9-93" HAVING A POSITION OF:
 NAD83(2011)
 LAT 39° 16' 16.64" NORTH
 LONG 107° 46' 11.24" WEST
 NAVD88 ELEVATION: 7245.29
 THE SOUTH LINE OF THE SW¼ OF SECTION 16, MONUMENTED AS SHOWN AND BEARING S 88°32'21" E.

NOTES

1. GPS OPERATOR L. MONTOYA OBSERVED A PDOP OF 1.5.
2. ALL GPS OBSERVATIONS ARE IN COMPLIANCE WITH COGCC RULE No.215.
3. EXISTING IMPROVEMENTS WITHIN 2000' OF LOCATION. SEE LOC. DRAWING.
4. SURROUNDING SURFACE USE IS NATIVE BRUSH, NON CROP RANGELAND.

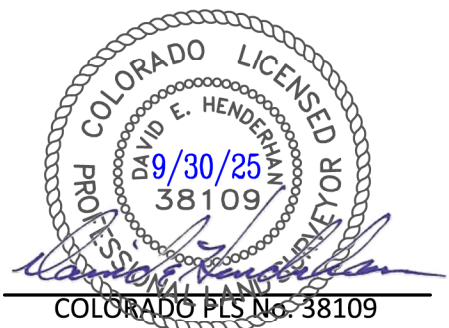
LEGEND

- ◆ WELL LOCATION
- APPROX. BHL/TPZ
- FOUND MONUMENT

SURVEYOR'S STATEMENT

I, DAVID E. HENDERHAN, AN EMPLOYEE AND AGENT ON BEHALF OF D.R. GRIFFIN & ASSOCIATES, INC. STATE THE PLAT HEREON IS A CORRECT REPRESENTATION OF A SURVEY MADE UNDER MY SUPERVISION ON THE 20th DAY OF AUGUST, 2025 OF THE SHOWN CURRIER 0993-16-01M AND THAT THE LOCATION HAS BEEN STAKED ON THE GROUND AS SHOWN ON THIS PLAT.

Notice: In accordance with Colorado State Law, any legal action based upon any defect in this survey plat must commence within three (3) years after first discovery of such defect. In no event, may any action based upon any defect in this survey plat be commenced more than ten (10) years from the date of certification shown hereon.



CURRIER BCU 0993-16-07 PAD

COLORADO PLS No. 38109

<p>(307) 362-5028 1414 ELK ST., ROCK SPRINGS, WY 82901</p>	PLAT OF DRILLING LOCATION IN SWNE, SECTION 16, FOR LARAMIE ENERGY, LLC		
	DRAWN: 7/5/2023 - DEH	SCALE: 1" = 1000'	2176' F/NL, & 2316' F/EL, SECTION 16, T. 9 S., R. 93 W., 6TH P.M., MESA COUNTY, COLORADO
	REVISED: 9/29/2025 - DEH	DRG JOB No. 22254	
REVISED WELL NAMES/SLOTS	A9-16-01M		