

Project: Mesa County, CO  
 Site: Currier 0993-16-07 Pad  
 Well: Currier BCU 0993-16-08M  
 Wellbore: OH  
 Design: Design #3  
 Latitude: 39.277853  
 Longitude: -107.773622  
 Ground Level: 7457.0  
 RKB=30' @ 7487.0usft (TBD)

PROJECT DETAILS: Mesa County, CO  
 Geodetic System: US State Plane 1983  
 Datum: North American Datum 1983  
 Ellipsoid: GRS 1980  
 Zone: Colorado Central Zone  
 System Datum: Mean Sea Level

REFERENCE INFORMATION  
 Vertical (TVD) Reference: RKB=30' @ 7487.0usft (TBD)  
 Section (VS) Reference: Slot - 16-08M(0.0N, 0.0E)  
 Measured Depth Reference: RKB=30' @ 7487.0usft (TBD)  
 Calculation Method: Minimum Curvature

FORMATION TOP DETAILS

TVDPath	MDPath	Formation
2750.0	2764.2	Wasatch 'G' Sand
3199.0	3217.6	Fort Union
3978.0	4004.2	Lower Wasatch
4704.0	4732.8	Ohio Creek
5117.0	5145.8	Williams Fork
5897.0	5925.8	TOG
7161.0	7189.8	Cameo
7659.0	7687.8	Rollins
8189.0	8217.8	Cozzette
8351.0	8379.8	Corcoran
8522.0	8550.8	Mancos

SECTION DETAILS

MD	Inc	Azi	TVD	+N/-S	+E/-W	Dleg	TFace	VSect	Annotation
0.0	0.00	0.00	0.0	0.0	0.0	0.00	0.00	0.0	
1000.0	0.00	0.00	1000.0	-5.5	-9.4	2.00	240.00	8.9	KOP (Build 2' / 100')
1250.0	5.00	240.00	1249.7	-27.2	-25.7	2.00	-74.22	35.3	EOB @ 5.00° Inc. / 240.00° Azm : Build 2' / 100'
1502.1	8.00	202.61	1500.2	-365.7	-166.7	0.00	0.00	401.9	EOB @ 8.00° Inc. / 202.59° Azm
4135.6	0.00	0.00	4108.1	-391.5	-177.4	2.00	180.00	429.8	EOD @ Vertical
4535.8	0.00	0.00	4507.0	-391.5	-177.4	0.00	0.00	429.8	TD @ 8725.8' MD / 8697.0' TVD
8725.8	0.00	0.00	8697.0	-391.5	-177.4	0.00	0.00	429.8	

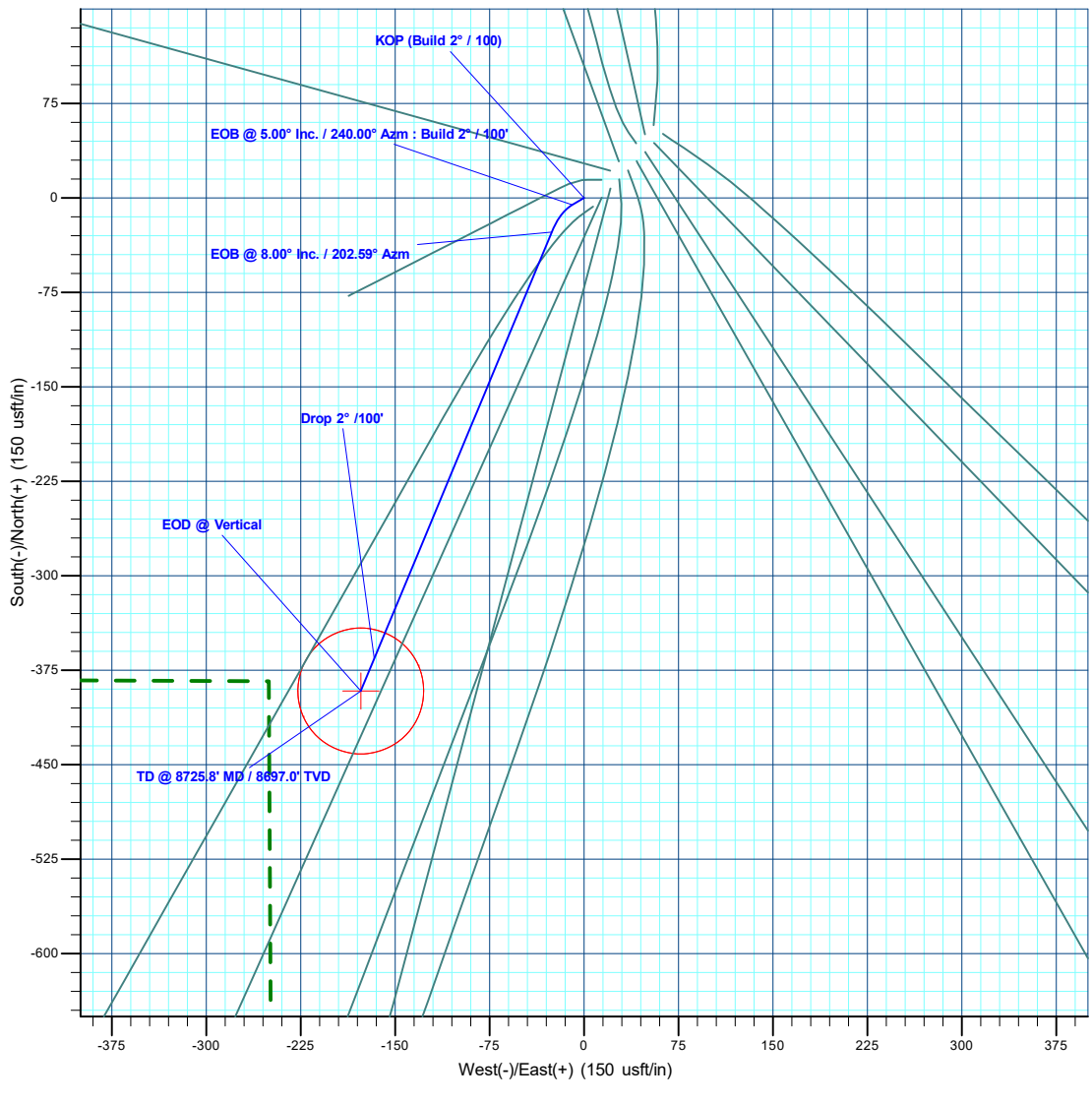
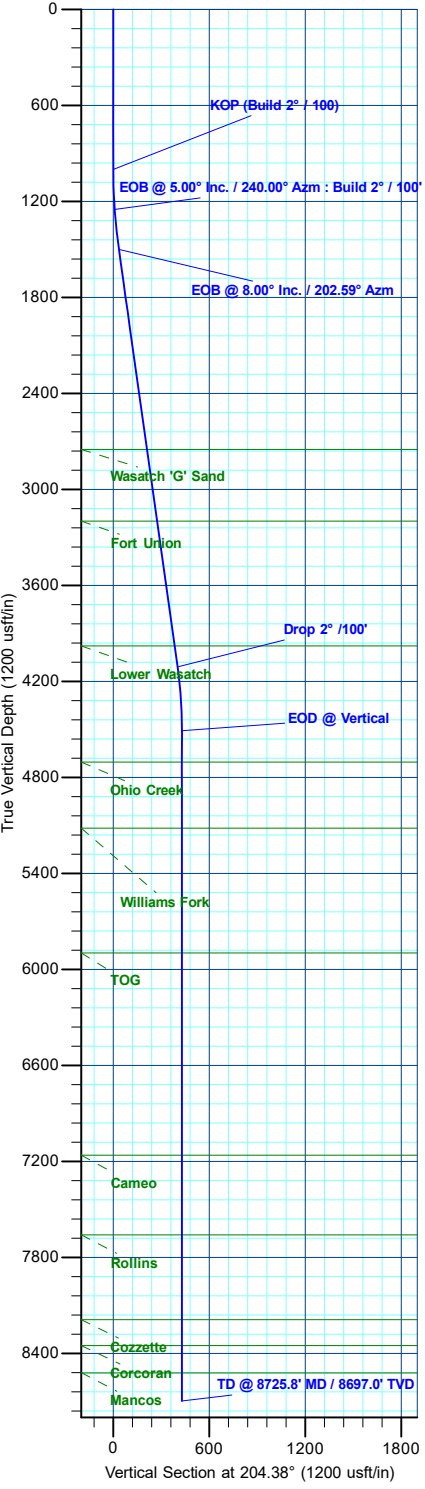
DESIGN TARGET DETAILS

Name	TVD	+N/-S	+E/-W	Northing	Easting	Latitude	Longitude
PBHL - Currier BCU 0993-16-08M	8697.0	-391.5	-177.4	1533757.80	2356274.31	39.276778	-107.774249

Azimuths to True North  
 Magnetic North: 8.67°  
 Magnetic Field Strength: 50850.7nT  
 Dip Angle: 65.13°  
 Date: 7/13/2023  
 Model: HDGM2025

WELL DETAILS: Currier BCU 0993-16-08M

+N/-S	+E/-W	Ground Level : 7457.0	Northing	Easting	Latitude	Longitude
0.0	0.0	1534144.69	2356461.44	39.277853	-107.773622	16-08M



Plan: Design #3 (Currier BCU 0993-16-08M/OH)  
 Created By: Will Jircik Date: 14:37, September 23 2025