

# WELLBORE DIAGRAM

PETRO MEX

**COAL GULCH UNIT #2**  
**API # 05077080120000**

Spud: 09/08/72  
Completed: 12/03/72

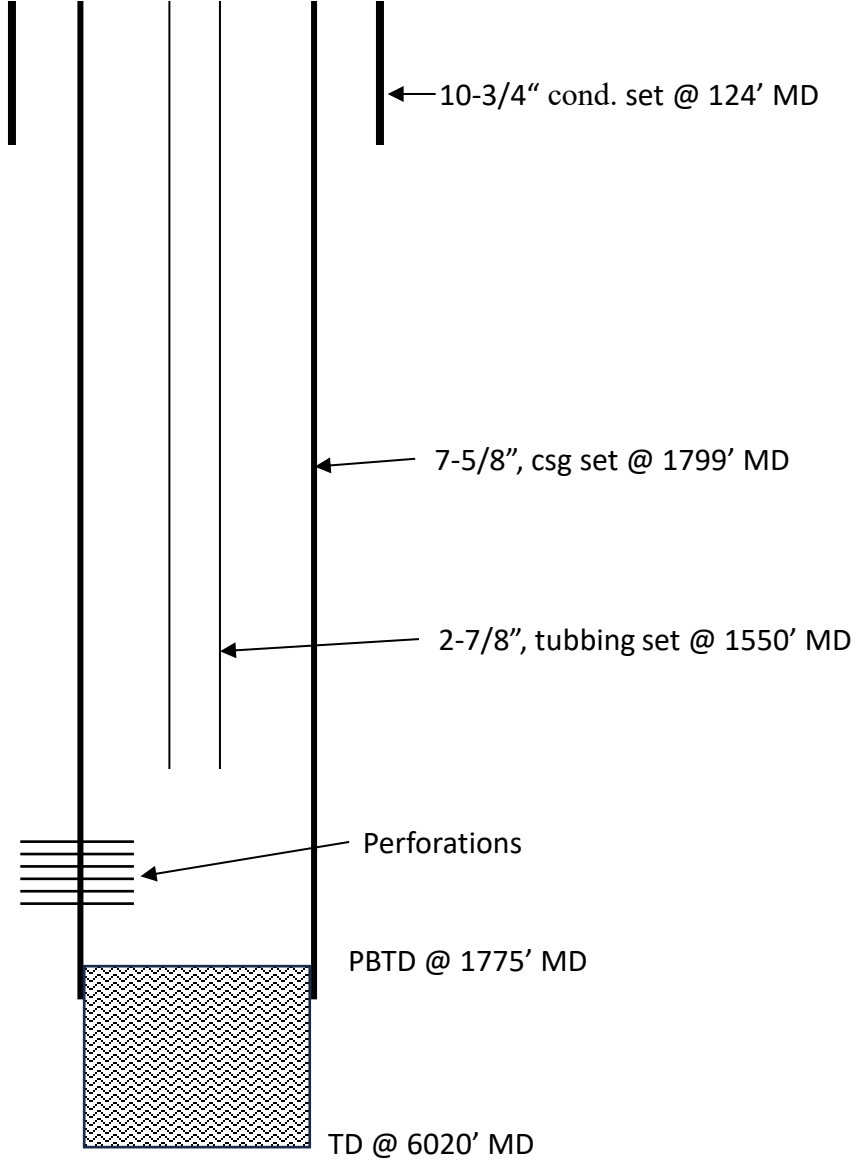
Vertical Well

Surface Location:  
1300 FNL 1240 FWL  
NW/4 NW/4 Sec 15, T8S, R101W  
Mesa, CO

Geologic Markers

Datum Elevation: 6693' KB

Top	MD Depth	SSTVD Depth
Mesaverde	Surf.	6693'
Cozette Ss	1552'	5141'
Mancos	1677'	5016'
Frontier	5500'	1193'
Dakota Silt	5760'	933'
Naturita Ss	5840'	853'
Cedar Mesa Ss	5928'	765'



Perforations/Treatments

Perfs: 1544'-1554', 2 SPF

Treatment: Propane Frac w/  
3,000-gal propane, 25 ball  
sealers, 15,000-gal  
propane, 5,000-gal gel,  
15,000# 20/40 sand

Hole Size	Casing, Wt/Ft	Cement	Csg. Depth	Amt Pulled
15"	10-3/4", 40.5#	150 sxs	124'	None
9-7/8"	7-5/8", 26.4#	150 sxs	1799'	None
tubbing	2-7/8"		1550'	